

# filcolana

OBSESSED WITH QUALITY YARN SINCE 1952



Design: Karen S. Lauger  
English translation: June Thomsen

## Havblik

1st edition - January 2023 © filcolana  
#FilcolanaHavblik

**The shawl is inspired by the peace and quiet of sitting by the coast and looking over the calm sea, where only small ripples break the shiny surface of the water. The shawl patterns resemble the still water, which is broken by individual ripples that catch the glints of the sun.**

### SIZES

One size

### MEASUREMENTS

180 cm wide (from side to side on the upper edge)

90 cm long (from neck to tip)

### GAUGE

18 sts and 34 rows on 4 mm needles = 10 x 10 cm.

The knitting sample is measured after washing and blocking. Each repetition of the pattern in chart A is approx. 4 cm wide and 4.1 cm long after blocking.

Needle sizes are for guidance only.

If you have more stitches on 10 cm, change to a larger needle. If you have fewer stitches on 10 cm, change to smaller needles.

### MATERIALS

**Yarn from Filcolana**

200 g **Anina** in col. 249 (Cobalt Blue)

**4 mm circular needles, 80 cm**

**Stitch markers**





# Technique

## ABBREVIATIONS

**st(s):** stitch(es)

**k:** knit

**p:** purl

**tbl:** through back loop

**tog:** together

### **Sm**

Slip marker from left to right hand needle.

### **DBD (double decrease)**

Slip 1 st knit-wise, knit 2 sts together, pass the slipped st over.

### **Ssk**

Slip one st knit-wise, slip one st knit-wise, slip both sts back onto the left needle and knit them together through the back loop.

## SPECIAL TECHNIQUES

### **Figure eight cast on**

Hold two needles (or the two needle points) parallel in left hand. Hold the yarn in front of the needles. Insert the working yarn between the needles, to the back and over the top needle, then insert the yarn between the two needles again, to the back and under the lower needle. The yarn now has a figure eight shape around the two needles. Continue leading the yarn alternately from the middle and back and over the upper needle and to the back and under the lower needle, until you have the desired stitch count.

# Workflow

The shawl is worked from the middle of the neck and down. Increases are worked in both sides and in the middle.

The lace pattern is worked according to the charts.

There are 3 charts which show the 2 lace patterns for the inner part of the shawl and a chart for the edge of the shawl.

## CHARTS

Charts are read from left to right and only show the right side rows. On wrong sides purl all sts.



# Pattern

## SHAWL

With 4 mm needles cast on 6 sts using figure eight cast on, so you have 3 sts on each needle tip.

Knit 6 rows of stockinette (knit on right side, purl on wrong side) over the 3 sts on the 'top' needle, last row is a wrong side row.

**1st row (RS):** K3, yarn over, turn work 90 degrees, pick up 5 sts along the edge, turn work 90 degrees, yarn over, knit the 3 sts from the bottom of the cast on edge through the back loop = 13 sts.

**2nd row and all consecutive wrong side rows:**  
Purl all sts.

**3rd row:** K3, yarn over, k3, yarn over, place marker, k1, yarn over, k3, yarn over, k3 = 17 sts.

**5th row:** K3, \*yarn over, k1, yarn over, sl1, k2tog, psso, yarn over, k1, yarn over\*, sm, k1, repeat from \* to \*, k3 = 21 sts.



## First lace pattern

Start by working the lace pattern according to chart A like this:

**Right side rows:** K3, yarn over, follow chart A (repeat the sts in the marked box) to the marker, yarn over, sm, k1, yarn over, follow chart A to last 3 sts, yarn over, k3.

**Wrong side rows:** Purl all sts.

Repeat these 2 rows until you have worked a total of 11 repetitions of chart A. You now have 285 sts on your needles.

## Second lace pattern

Now work the second lace pattern according to chart B, like this:

**Right side rows:** K3, yarn over, follow chart B (repeat the sts in the marked box) to marker, yarn over, sm, k1, yarn over, follow chart B to last 3 sts, yarn over, k3.

**Wrong side rows:** Purl all sts.

Repeat these 2 rows until you have worked 3 repetitions of chart B. You now have 429 sts on your needles.

## Edge pattern

Now work the last pattern at the edge like this:

**Right side rows:** K3, yarn over, follow chart C (repeat the sts in the marked box) to the marker, yarn over, sm, k1, yarn over, follow chart C to last 3 sts, yarn over, k3.

**Wrong side rows:** Purl all sts.

Repeat these 2 rows until you have worked all 5 rows in chart C.

Last row is a right side row.

You now have 441 sts on your needles.

Now bind off from the wrong side like this:

K2, \*slip the 2 sts on right-hand needle onto left-hand needle and knit them together through the back loop, k1\*, repeat from \* to \* till all sts are bound off.

## FINISHING

Weave in all loose ends.

Wash the shawl according to the washing instructions on the labels and block it so the top edge is even, and the lace pattern unfolds nicely. The shawl has fine pointed tips along the bind off edge.



- Repeat
- Yarn over
- Knit on right side, purl on wrong side
- Knit 2 sts together
- ssk: Slip 2 sts knitwise, one at a time, slip both sts back onto left needle and knit them together through the back loop.
- DBD: Slip 1 st knitwise, k2tog, pass slipped st over.

Chart A

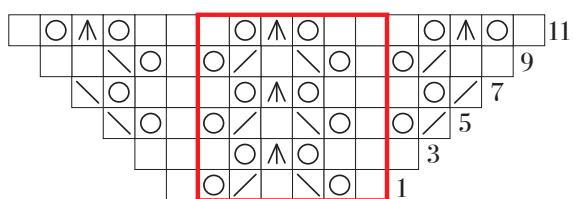


Chart C

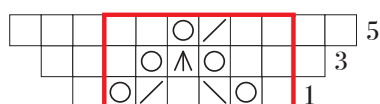
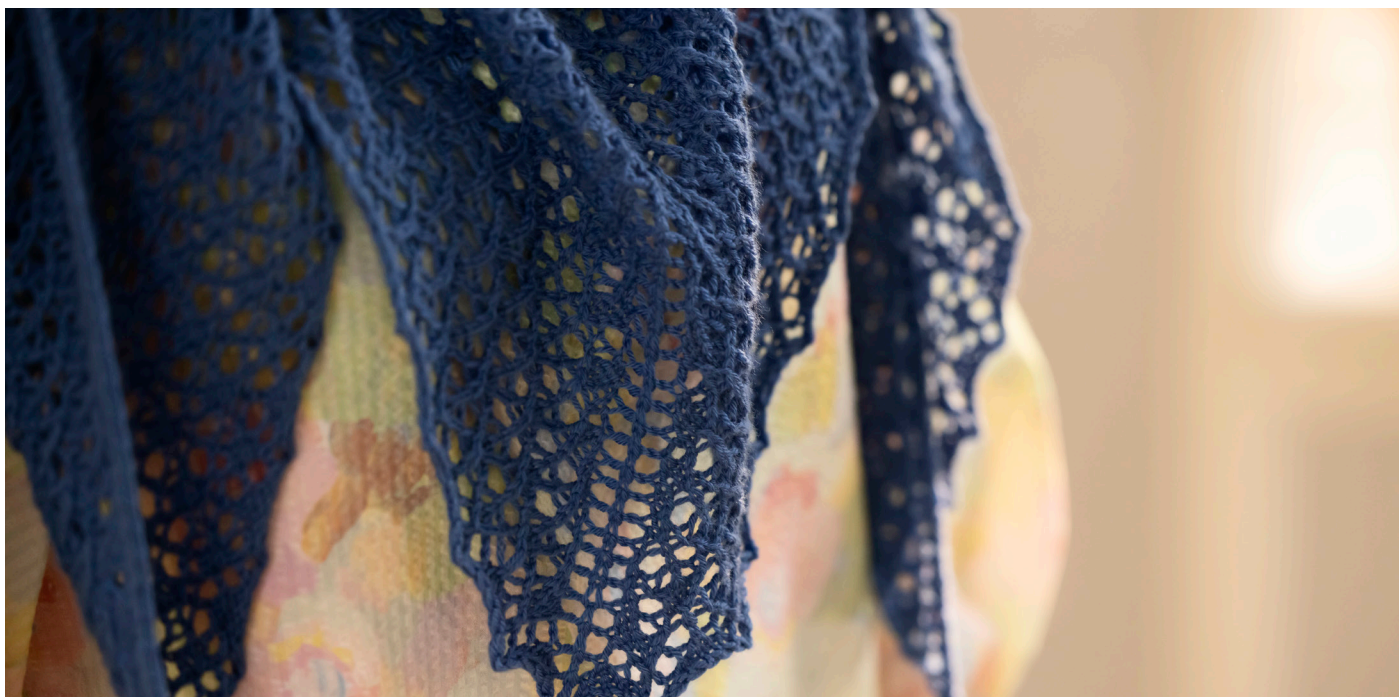
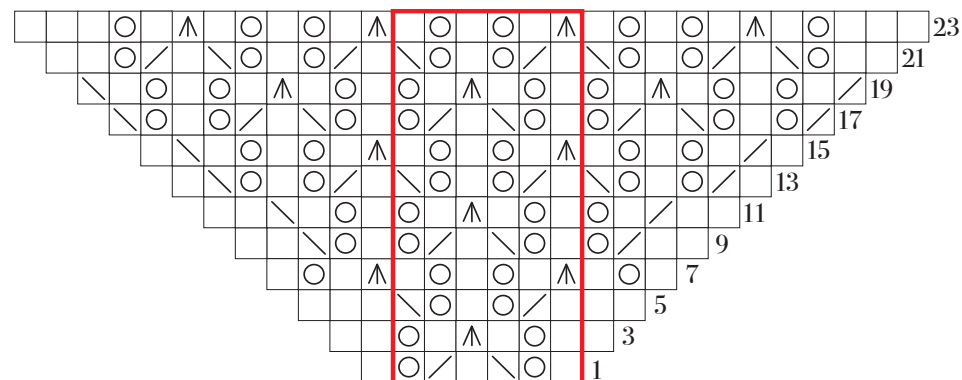


Chart B



filcolana