

# JUST AND LOYAL

BY DIANNA WALLA



PAPER TIGER

# JUST AND LOYAL

## MATERIALS

- 2 colors of **Tukuwool Fingering** (100% Finnish wool, 213 yds / 195 m per 50 g skein) in the following quantities:
- **main color yarn (yellow):**  
155 yds / 142 m (1 skein)  
shown in Valo
- **contrasting color yarn (black):**  
105 yds / 96 m (1 skein)  
shown in Anga  
*If substituting yarn, fingering weight is recommended.*
- preferred needles for knitting small circumferences in the round (DPNs, two circulars, or magic loop) in size needed to obtain gauge  
(suggested size: US size 1 / 2.25 mm)
- stitch marker to mark BOR
- stitch holder or waste yarn for thumb
- ruler to measure gauge
- tapestry needle to weave in ends

## SIZES

8" / 20 cm hand circumference  
10" / 25 cm in length

## FINISHED GAUGE

36 stitches and 40 rounds = 4" / 10 cm in stranded colorwork

## TUTORIALS

For a tutorial on trapping long floats in stranded colorwork:  
<http://paper-tiger.net/blog/14117891>

Newcomers to stranded colorwork may want to reference this page on color dominance:  
<http://paper-tiger.net/blog/13911317/colordominance>

## SKILLS

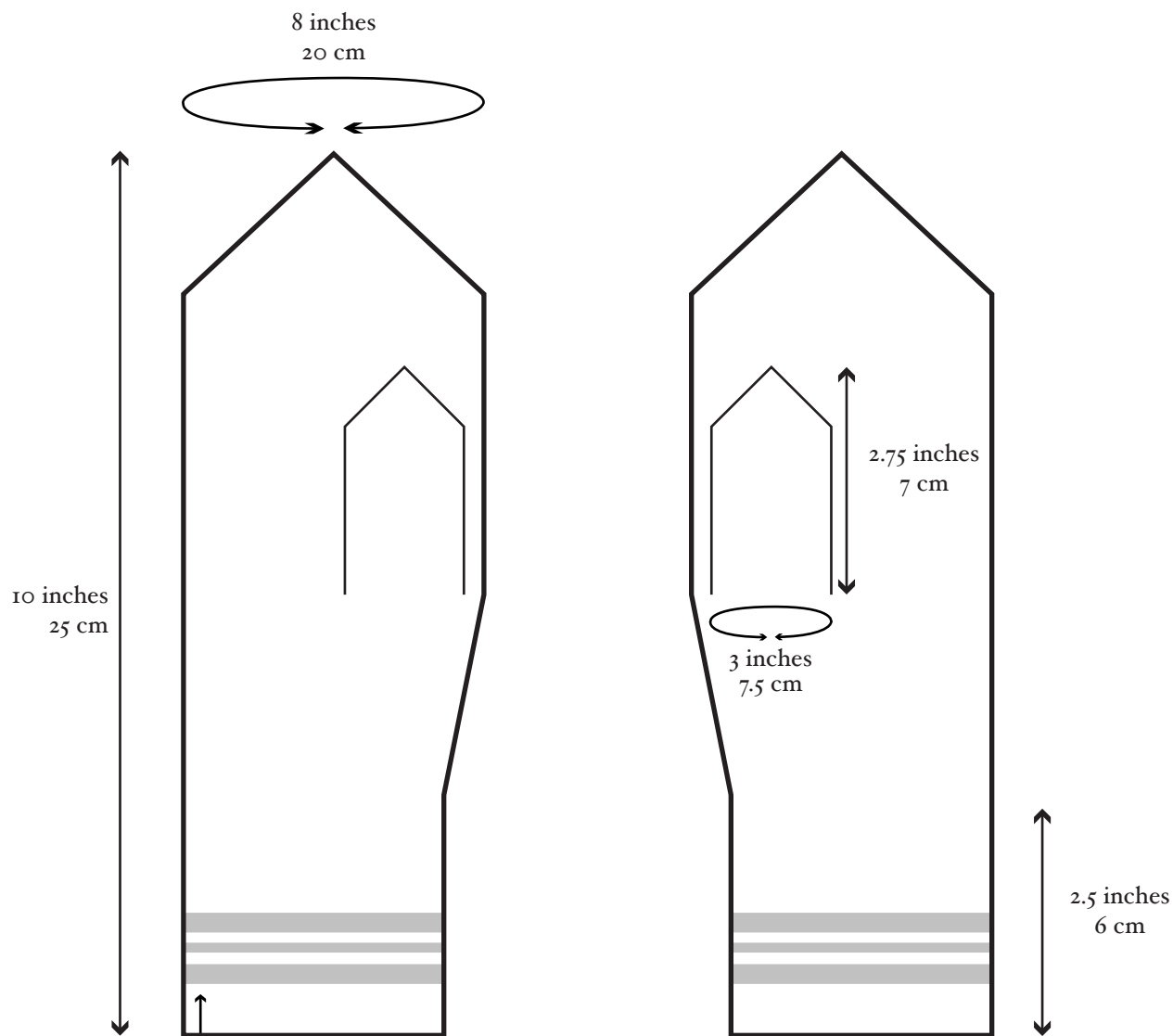
stranded colorwork, increasing and decreasing in colorwork

Photos & text © Paper Tiger 2018.  
Pattern intended for private use only. The pattern and products made using the pattern may not be used for commercial purposes.

SHARE YOUR PROJECTS WITH  
**#PAPERTIGERKNITS**

[www.paper-tiger.net](http://www.paper-tiger.net)

## FINISHED DIMENSIONS



## ABBREVIATIONS

**BOR:** beginning of round

**CC:** contrasting color

**CO:** cast on

**DPNs:** double-pointed needles

**k:** knit

**k2tog:** knit 2 stitches together

**M1L:** make one left increase

**M1R:** make one right increase

**MC:** main color

**p:** purl

**rep:** repeat

**rnd(s):** round(s)

**SK2P:** slip 1 stitch purlwise,  
knit 2 together, pass slipped  
stitch over

**ssk:** slip, slip, knit decrease

**st(s):** stitch(es)





## INSTRUCTIONS

Using main color (MC) yarn and the long-tail method, CO 60 sts. Place marker for beginning of round (BOR) and join to work in the round, being careful not to twist.

**2x2 ribbing:** \*K2, p2; rep from \* to end.

Rep rnds 1-2 and change colors according to the following sequence:

7 additional rnds MC  
3 rnds CC  
2 rnds MC  
2 rnds CC  
2 rnds MC  
3 rnds CC  
8 rnds MC

**Next rnd:** \*K30, M1L; rep from \* once more. – 62 sts

Begin working Chart, reading each row of the chart from right to left (note that this pattern features separate charts for each hand). Work increases as indicated for the thumb gusset.

Upon completion of Row 24 of Chart, prepare to set up for the thumb hole as follows – note that the instructions differ for each hand.

**Left mitten:** Work first 19 sts of Row 25, place next 13 sts on stitch holder or waste yarn, CO 13 sts in pattern using the backwards loop method, continue working Row 25 to end of rnd.

just and loyal - v.1

**Right mitten:** Work first 40 sts of Row 25, place next 13 sts on stitch holder or waste yarn, CO 13 sts in pattern using the backwards loop method, continue working Row 25 to end of rnd.

Continue working Chart until all rows have been completed, decreasing as indicated.

Break yarns and with CC yarn, thread tail through remaining 8 loops with a tapestry needle. Pull tight to close hole.

### THUMB

Carefully remove waste yarn from thumb sts and place on needles. Join both yarns to pick up and knit 15 sts from the top of thumb hole (the 13 sts cast on, plus an additional stitch at each side of thumbhole), following the pattern of the first row of the thumb section of the Chart. Continue across remaining 13 sts of the Chart, and place marker for BOR. – 28 sts on needles.

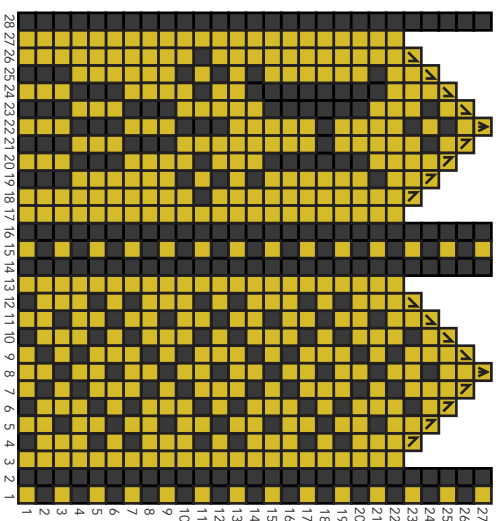
Continue working the thumb section of the Chart, decreasing as indicated. Upon completion of thumb, break yarns and with CC yarn, thread tail through remaining 8 loops with a tapestry needle. Pull tight to close hole.

## FINISHING

Weave in all ends and block.



# CHART: LEFT HAND



	Main color		MIR
	Contrasting color (dominant)		MIL
	* waste yarn for thumb		k2tog
			ssk
			SK2P

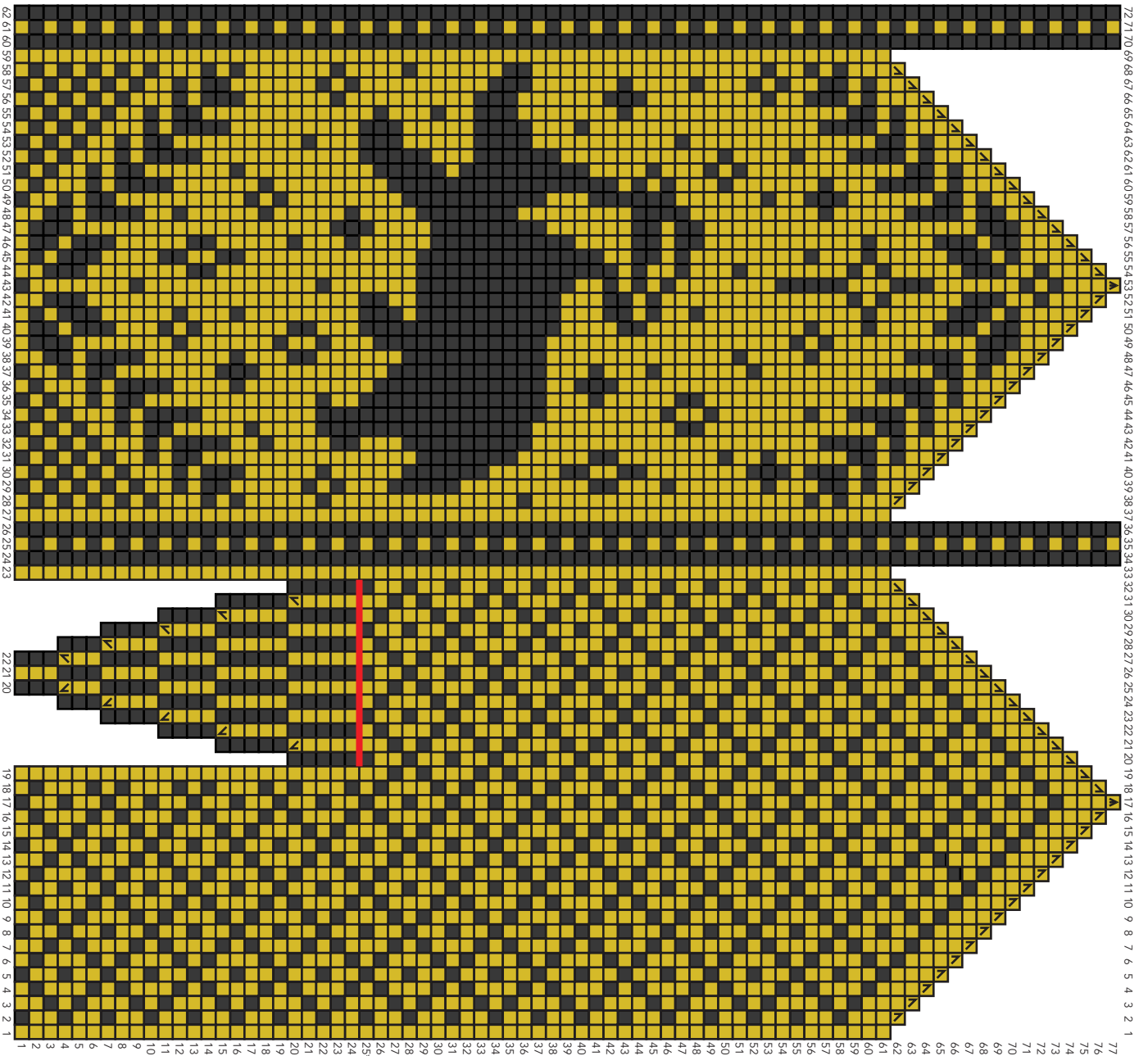
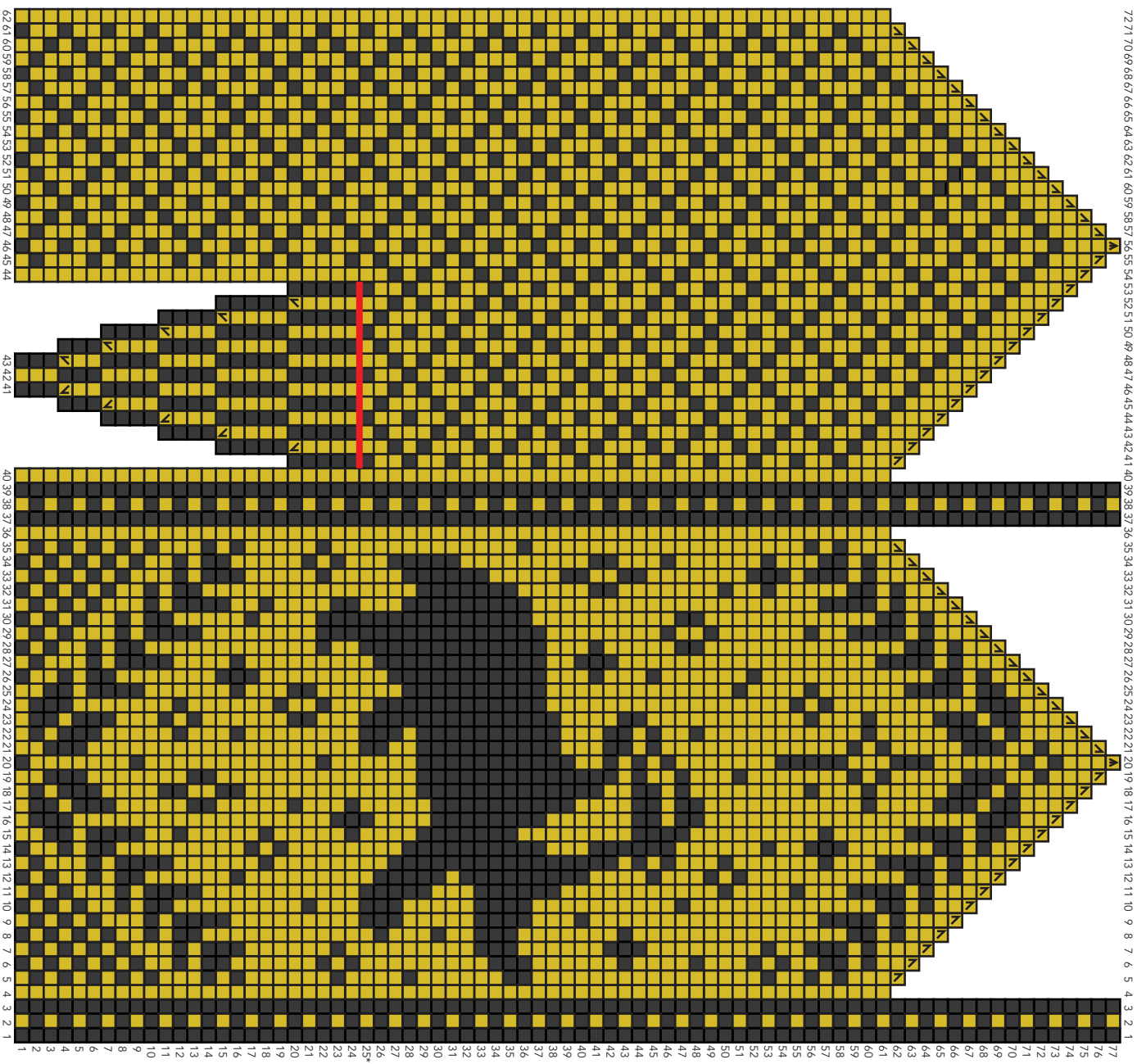
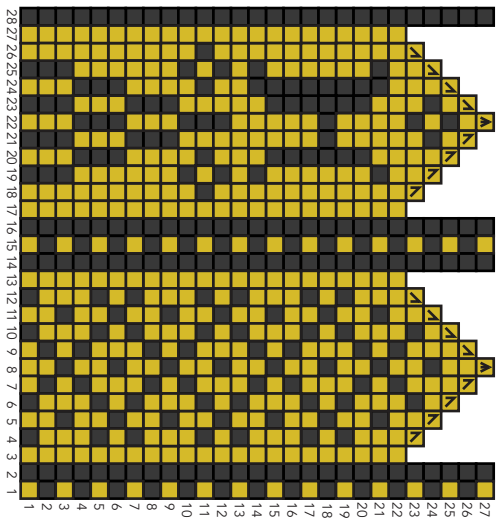


CHART: RIGHT HAND



■ Main color	■ M1R
■ Contrasting color (dominant)	■ M1L
■ * waste yarn for thumb	■ k2tog
	■ ssk
	■ SK2P