

---

# Hello Fall

---

Designed By: Jennifer Borchert



The pattern and photographs contained in this document are property of Jennifer's Stitched Up. This pattern is available for personal use only. No unauthorized reproduction, in whole or in part, or distribution of this pattern or content is allowed. Sales of finished items are permitted with credit given to [www.jennifersstitchedup.etsy.com](http://www.jennifersstitchedup.etsy.com) or <https://www.ravelry.com/designers/jennifer-borchert>

If you need any help with my patterns you may contact me: [jennifersstitchedup@yahoo.com](mailto:jennifersstitchedup@yahoo.com)



© 2019 Jennifer's Stitched Up



---

# Hello Fall

---

Designed By: Jennifer Borchert

*Written in English using US crochet terms*  
*Skill Level: Intermediate*

## Supplies:

- U.S. **H/8** (5.00mm), **J/10** (6.00mm) crochet hooks (for larger size only use **K/10.5** (6.50mm)) For child ages 7 to 12 use a **I/9** (5.50MM) crochet hook in the hat portion.
- **Worsted medium weight yarn** (#4) for each color needed, less than a skein used in each of the following colors **orange-** I Love This Yarn in Desert Glaze, **brown-** Caron Simply Soft in Taupe, **tan-** Red Heart in Buff Fleck, **green-** I Love This Yarn in Forest, **aran tweed-**Impeccable in Aran Tweed, and **white-** any worsted will do.
- **Yarn Needle** for hiding threads.
- **Scissors**
- **Stitch Marker**

**Size:** Fits most teen/adult head circumference of about 20" - 22" Use a **K/10.5** (6.50mm) hook if larger size needed on hat portion of pattern. I use a K hook since the WCS and carrying yarn make this type of hat a snug fit.

**Gauge:** 7 WCS x 7 rounds = 2 inches with K hook used. Note: **Pay attention to gauge.** My tension is tight so I use a K hook while many use a J hook.

## Abbreviations:

ch – chain  
st(s) – stitch(s)  
sl st – slip stitch  
sc – single crochet  
BLO – back loop only  
WCS – waistcoat stitch  
WCSDEC- waistcoat stitch two together  
FO- fasten off

## Pattern Notes:

- You need to know how to color change, carry yarn, and waistcoat stitch to crochet this pattern. Tutorials can be found on YouTube. I like Moogly Blog tutorials.
- I Love This Yarn, Impeccable, Caron, and Red Heart used for pattern. You can use any worsted weight yarn as long as it is similar. Tweeds are an amazing choice with WCS and carried yarns.



---

# Hello Fall

---

Designed By: Jennifer Borchert

- **Use loose tension when making the WCS.**
- **Do not pull carried yarn at a tight tension.**
- Do not sl st to join when using the WCS.
- Use a stitch marker at the beginning of the round to keep your place and move up each round you start.

## Brim:

With Aran Tweed and **H/8 (5.00mm) hook** ch 11, (or desired height you prefer)

**R1:** sc in 2nd ch from the hook and in each ch across, ch 1, turn (10)

**R2:** sc in BLO, ch 1, turn (10)

**R3-64:** repeat row 2 until your brim reaches 64 rows. Align the brim and sl st into both back loops only from each brim side. Ch 1 and turn right side out. **Change hook to J/10 (6.00mm)** (or **K/10.5 (6.50mm)** for larger size only) (or **I/9 (5.50MM)** for child size) and **loosely** sc 64 around. (64) **Do not sl st in last stitch.** You will color change in last stitch to brown.

## Body of Hat:

With brown, orange and **J/10-6MM hook** (or **K/10.5 (6.50mm)** for larger size or **I/9 (5.50MM)** for child size) **(Crochet with loose tension throughout)** **Following graph for remainder of hat. Repeat graph one more time each round.**

**R1-3:** Using brown and orange. With brown \*WCS in each next 4st color change to orange and WCS in next 4 st color change back to brown\* repeat around. (64)

**Use a stitch marker to mark the first st of each round. Move stitch marker up as you finish each round.**

**R4-6:** Using orange and aran tweed. With orange \*WCS in each next 4st color change to aran tweed and WCS in next 4 st color change back to orange\* repeat around. (64)

**R7-9:** Using brown and orange. With brown \*WCS in each next 4st color change to orange and WCS in next 4 st, color change back to brown\* repeat around. (64)

**R10:** With aran tweed skip a stitch and WCS in next st, WCS in skipped st. repeat around. (64) (Do not do this tight, so that you can get the next row stitches in properly.)

**R11-14:** With aran tweed and orange WCS around doing color changes along with the graph. Follow graph and repeat 1 more time around. (64)

**R15-17:** With aran tweed, orange, white, and green WCS around doing color changes along with the graph. (64)



---

# Hello Fall

---

Designed By: Jennifer Borchert

**R18:** With aran tweed, orange, and green WCS around doing color changes along with the graph. (64)

**R19:** With aran tweed, tan, and green WCS around doing color changes along with the graph. (64)

**R20:** With aran tweed and tan WCS around doing color changes along with the graph. (64)

**R21:** With aran tweed WSC around. (64)

**R22:** With brown \*skip a stitch and WCS in next st, WCS in skipped st, repeat, color change to orange, skip st, WCS, WCS in skipped st, repeat\* (64) (Do not do this tight, so that you can get the next row stitches in properly.)

**R23-24:** With brown WCS in each next 4st, \*color change to orange and WCS in next 4 st, color change back to brown\* repeat around. (64)

**R25-27:** With orange WCS in each next 4st, \*color change to aran tweed and WCS in next 4 st, color change back to orange\* repeat around. (64)

## Decrease Rounds

**R28:** Using brown and orange. First with brown \*WCS next 2, WCSDEC color change to orange, WCS next 2, WCSDEC color change\* repeat around. (48)

**R29:** Using brown and orange. First with brown \*WCS, WCSDEC\* color change to orange, WCS, WCSDEC color change\* repeat around. (32)

**R30:** Using brown and orange. First with brown \*WCSDEC color change WCSDEC color change\* repeat around. (16) Finish off. Leave a long tail for weaving through the stitches to cinch the top of the hat shut. Add a pom! Pom used for pattern purchased from Michaels. I attach a button to the inside of the hat and pull the poms elastic through the top of the hat into the inside and wrap around the button.

**Alternative R29 and R30:** You can just scdec instead of doing WCSDEC if you like. This is easier and less work and the pom pom covers the top up anyway. You could also choose to not do any decreases and cinch the entire portion up as well.

---

# ***Hello Fall***

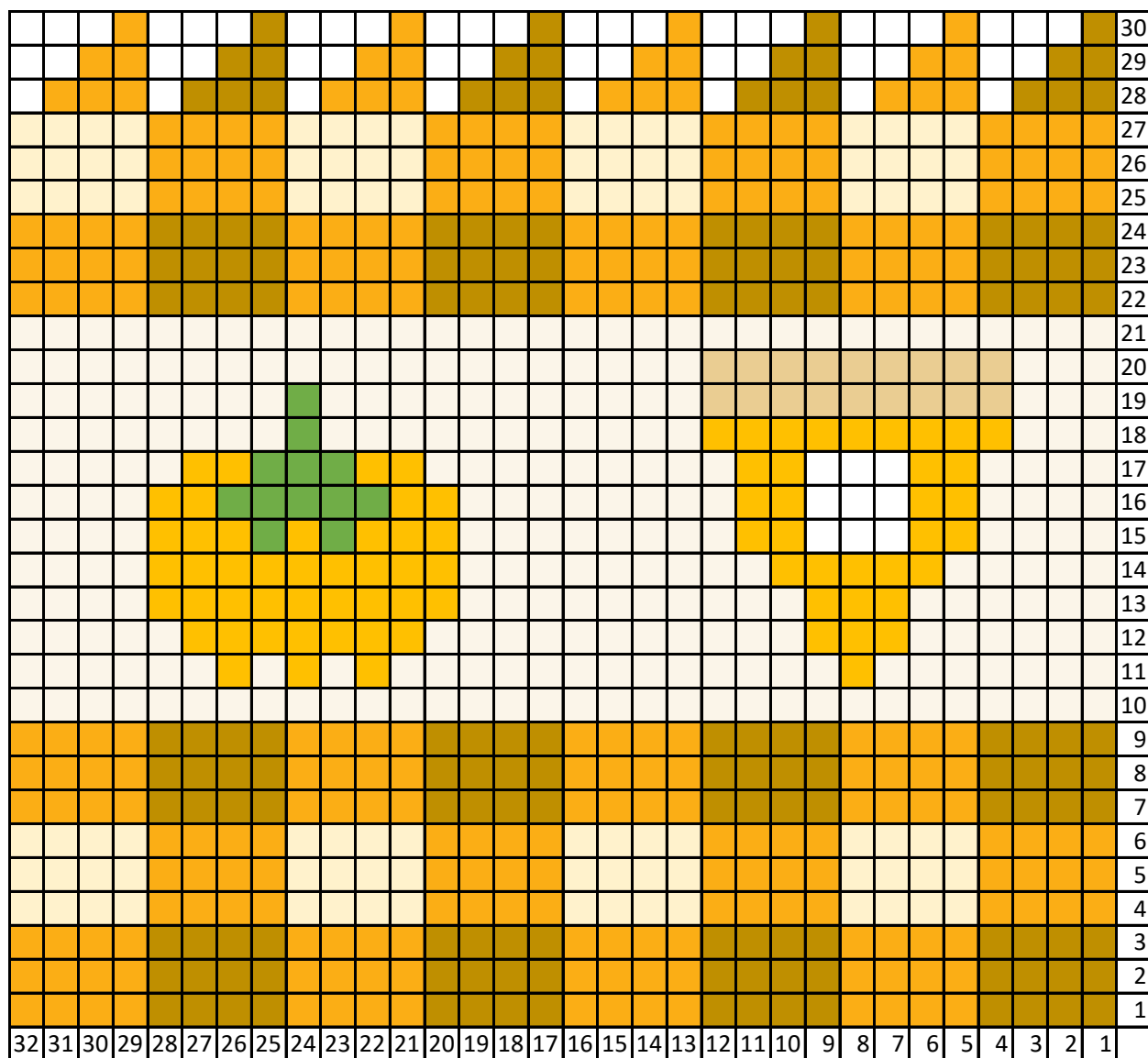
---

Designed By: Jennifer Borchert

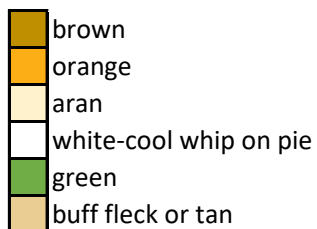


# Hello Fall

Designed By: Jennifer Borchert



Rounds 28-30  
Decrease Rounds  
White represents  
stitches taken out.



Use graph bottom numbers  
1-16 to repeat if pumpkins  
only wanted.  
Use graph bottom numbers  
17-32 to repeat if pie  
only wanted.

