

# *Ithaca*



*Use the hashtag #ithacamkal to share your project.*

*Pattern, pictures and notes © Audrey Borrego. This pattern is for personal use only.*

**Yarn :**

You will need at least two colours of fingering weight yarn in the following amounts :

MC : 525 meters – 575 yards

CC : 565 meters – 620 yards

The sample is knit with Knitting for Olive Merino in Copper (MC) and Licorice (CC).

**Needles :**

3 mm (US 2.5) circular needles with appropriate cable length to knit in the round (60 cm – 24" maximum) or magic loop

or size required to get gauge

**Gauge :**

28 sts x 30 rnds per 10 cm – 4" in stranded knitting after blocking

Note that a different gauge will affect size and yarn usage.

**Size :**

128 cm – 50 1/2" circumference (adjustable)

23 cm – 9" width

You will be able to work extra length if necessary, adding extra pattern bands between the clues or at the end of the project.

**Notions :**

2 different stitch markers, tapestry needle and scissors

Scrap yarn for the provisional cast-on and to place sts on hold

Crochet hook the same size as your knitting needle for the provisional cast-on

A spare needle for grafting

Row counter recommended

**Techniques used :**

Provisional cast-on

Two colours stranded knitting in the round with floats to catch

Grafting

Pattern includes charted instructions

Charts contrast show a light background (MC) and dark patterns (CC)

## **Reading Charts :**

When knitting in the round, always read the Chart from right to left.

Note that to be easier to read, each main Chart has been split into 2 parts.

## **Colourwork :**

Catching floats : in fingering weight, you can catch floats when skipping more than 7 stitches. You may do it more often if you prefer, just make sure not to catch a float in the same place in two consecutive rounds.

Colour dominance : CC will form the motifs while MC will be the background colour. To have consistent colour dominance : hold CC to the left and always carry it under MC without twisting the strands.

You may notice that your fabric is rather irregular prior to blocking. This is common even amongst experience colourwork knitters. Do not let it bother you because as long as you are using a wool-based yarn, blocking will massively improve this.

## **Making a longer cowl :**

Each main section should measure about 21 cm – 8 ¼" tall, 1/6 of the cowl's total size.

If your row gauge is different than the pattern's and you notice your sections are shorter, consider adding extra pattern bands from pages 18 to 20.

You can incorporate those bands in between each main section, or at the end of the project before grafting the cowl. They vary in height so you can choose and plan their placement depending on how much more length you need, whether you want to add a lot of small ones or only a few larger ones etc...

## **Making a smaller cowl :**

To make a cowl with about half the circumference, you will work only 3 sections. You will need to have two clues / Charts at a time.

Work each Chart only once on one half of the cowl as follows :

**Section 1 :** Work Chart A to side m, work Chart B to BOR.

**Section 2 :** Work Chart C to side m, work Chart D to BOR.

**Section 3 :** Work Chart E to side m, work Chart F to BOR.

## **Abbreviations :**

- st(s) : stitch(es)
- rnd : round
- BOR : beginning of round
- pm : place marker
- MC : main colour
- CC : contrast colour

## Cast-on and set-up :

With the [crochet method](#) or your preferred method, provisionally cast-on 130 sts on scrap yarn.

*(Provisional Cast-On using a crochet hook by Very Pink Knits)*

*Note : if you're using a different method that involves your main yarn, make sure to use CC.*

Knit the sts with CC.

Being careful not to twist the sts, join to work in the round and PM for BOR.

PM also after 65 sts for the side of the cowl.

## Section 1 :

Work Chart A from pages 6-7, making 2 repeats on each rnd.

This first clue represents the beginning of Odysseus' travel. You will find a nautical wheel for the journey by sea ; a trident and scales as symbols of Poseidon's anger. On the top, a lotus flower and a distorted cyclops eye are both nods to the first encounters Odysseus and his crew have.

## Section 2 :

Work Chart B from pages 8-9, making 2 repeats on each rnd.

This clue is dedicated to Circe, a witch whose magic is represented by the wolves, wands and herbs.

Above looms a moth and the moon, symbols of the journey to the underworld that Odysseus makes before leaving Circe.

## Section 3 :

Work Chart C from pages 10-11, making 2 repeats on each rnd.

This third clue represent three of the most iconic monsters from the Odyssey. The Sirens are shown through a geometric scale pattern, and looming over rocks are Charybdis and Scylla, respectively symbolized by a whirlpool motif and tentacles.

## Section 4 :

Work Chart D from pages 12-13, making 2 repeats on each rnd.

This clue starts with the image of the sun, personified by the god Helios. Above, wings symbolize Hermes as he travels to order the nymph Calypso, represented by a Zinnia flower, to release Odysseus.

## Section 5 :

Work Chart E from pages 14-15, making 2 repeats on each rnd.

This clue represents the island of Scheria or Phaeacia, where we meet the princess Nausicaa on the beach, shown through the shell and balls. Opposite the shell is a lyre, drawn here to symbolize the telling of Odysseus' story which pushes him to reveal his identity and finally head home.

## Section 6 :

Work Chart F from pages 16-17, making 2 repeats on each rnd.

This final clue pertains to Ithaca, where we find Penelope weaving and unravelling, illustrated by the graphic woven patterns at the bottom. Above, an abstract shape symbolizes owls in flight, icons of the goddess Athena. Finally, the bows and arrows signify Odysseus' violent reclamation of his kingdom and home.

When finishing the cowl right after Chart F or after one of the extra pattern bands, skip the last plain CC rnd which will be replaced by the grafting.

## **Finishing :**

Cut yarns, leaving a CC tail of about 4 times the cowl's circumference then remove markers and place sts on hold.

Weave in all ends on the inside and gently block the cowl.

Once completely dry, place the end sts back on the needles.

Unravel the provisional cast-on and place the beginning sts on another set of needles. Arrange the sts to make sure they are not twisted.

*Note : If you do not want to work a grafting on a large number of sts, you may use a [three needle bind-off](#) instead. Because you will be doing it facing the right side of the cowl, it will create a visible small seam.*

*(3-needle BO tutorial by Very Pink Knits)*

Using the CC tail and being careful not to twist the cowl unless you want a moebius effect, graft the beginning and end sts together to close the tube using the [kitchener stitch](#).

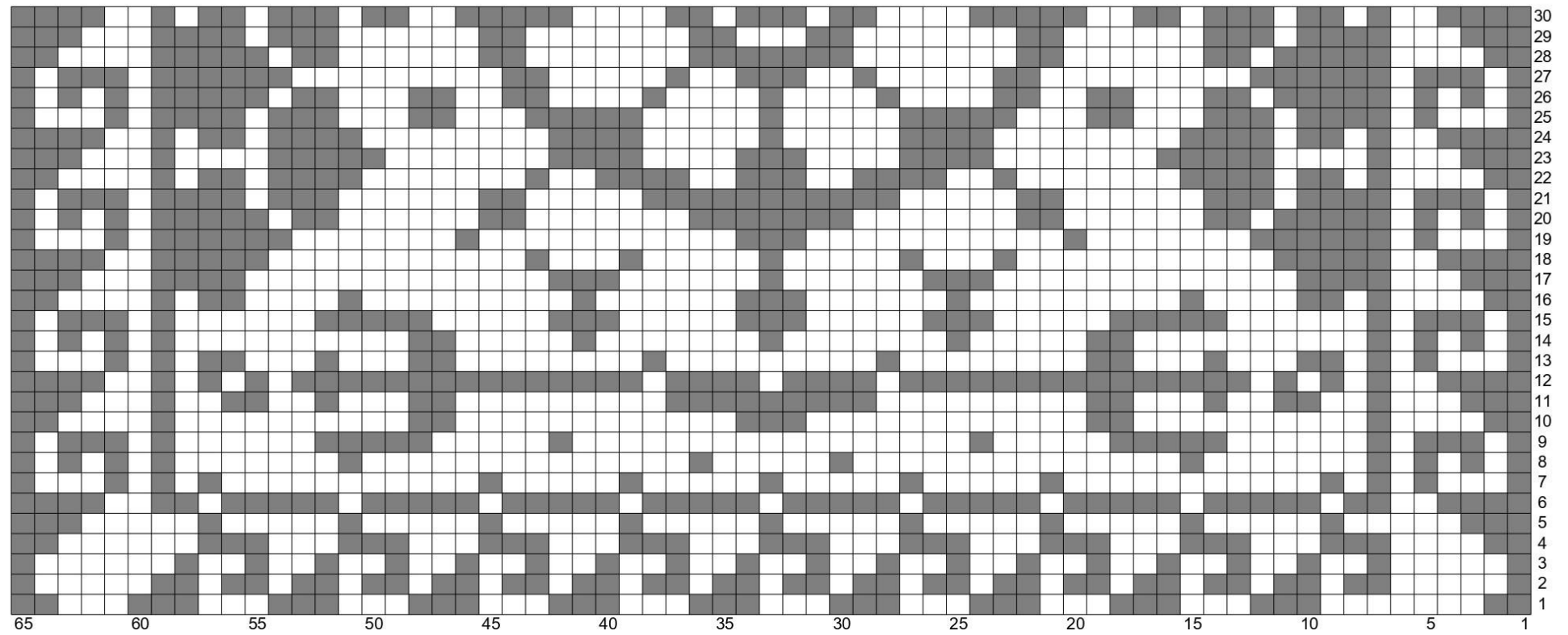
*(Kitchener stitch tutorial by Very Pink Knits)*

Weave the grafting ends inside the cowl.



# CHART A

## Part 1

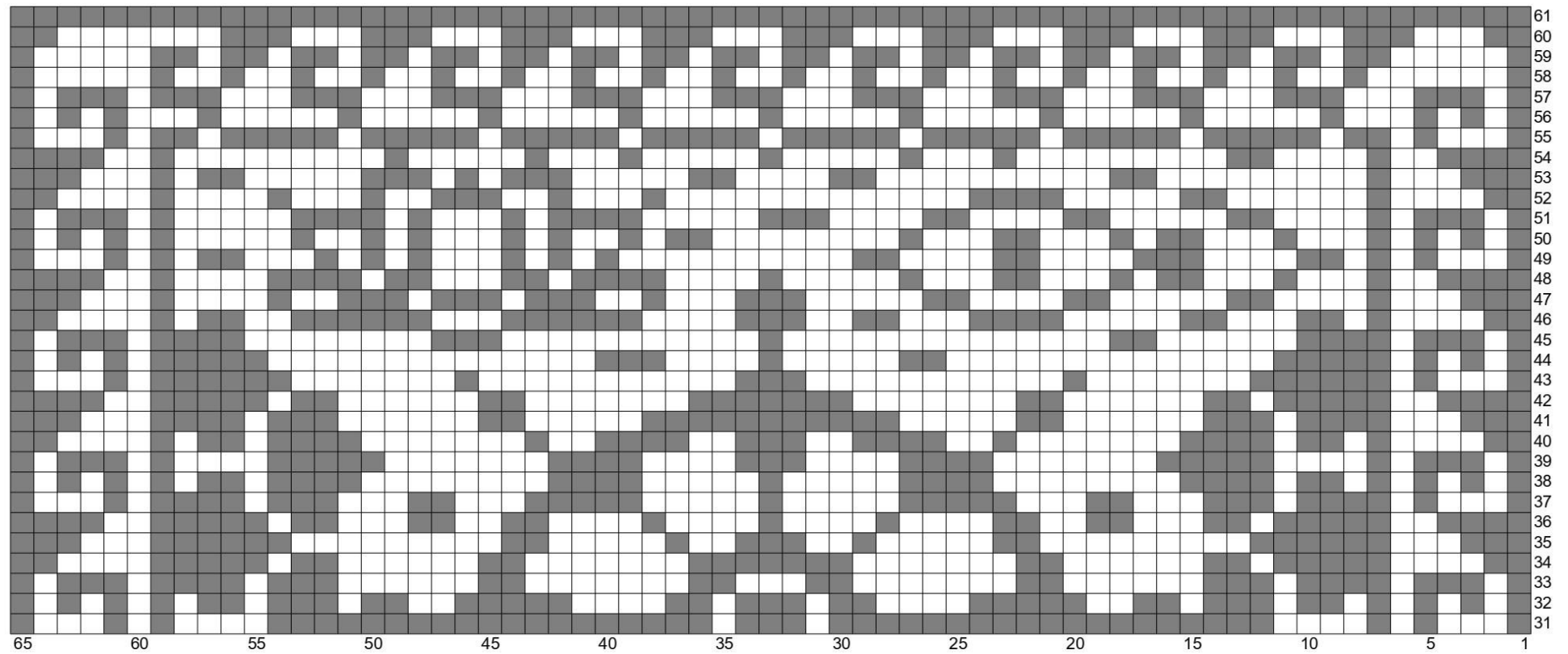


MC

CC

# CHART A

## Part 2

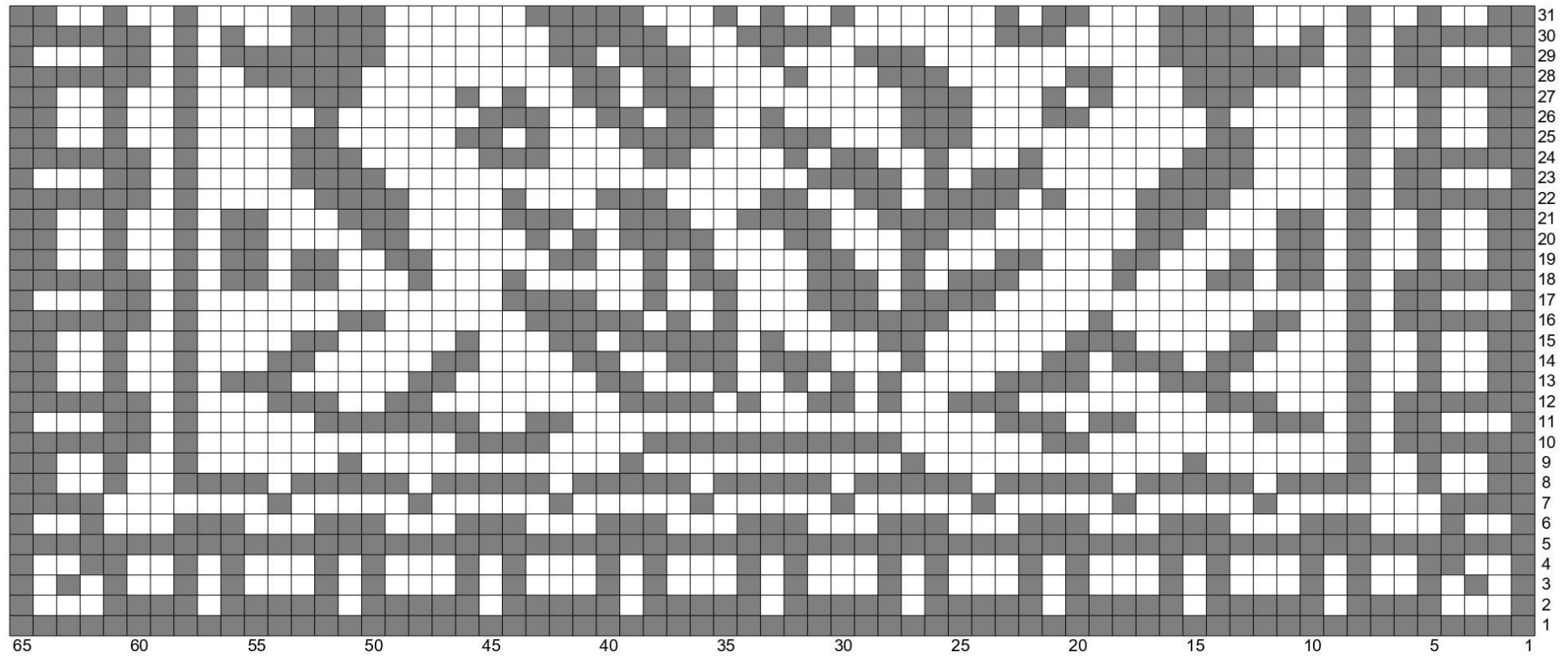


MC

CC

## CHART B

### Part 1



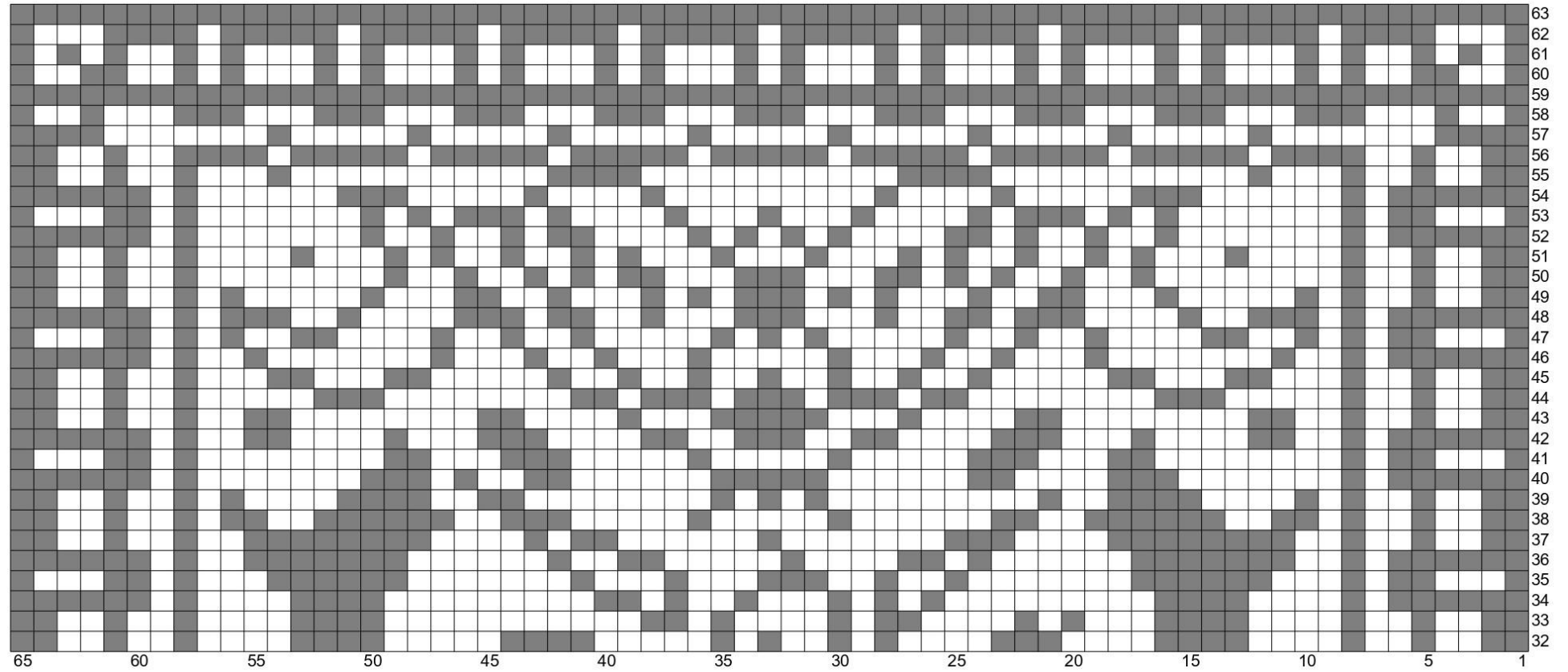
MC

CC



## CHART B

### Part 2

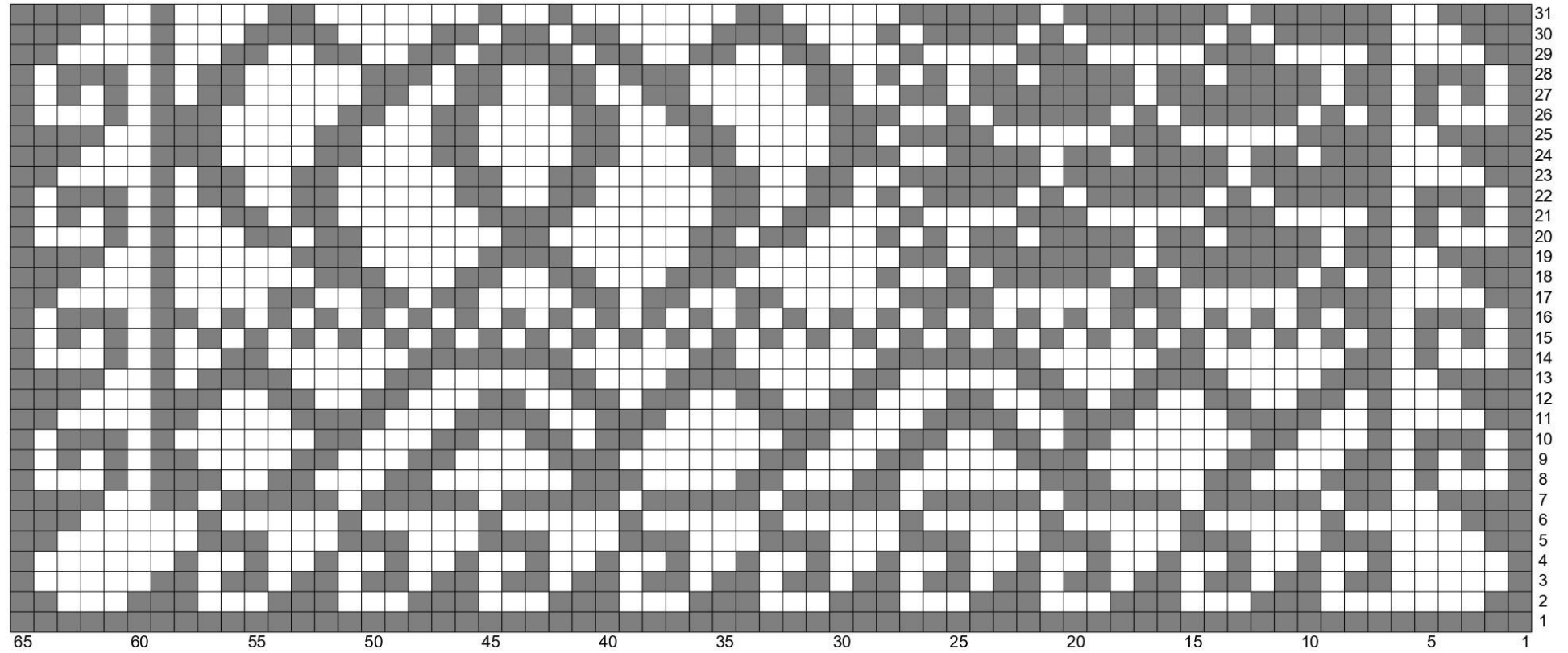


MC

CC

# CHART C

## Part 1

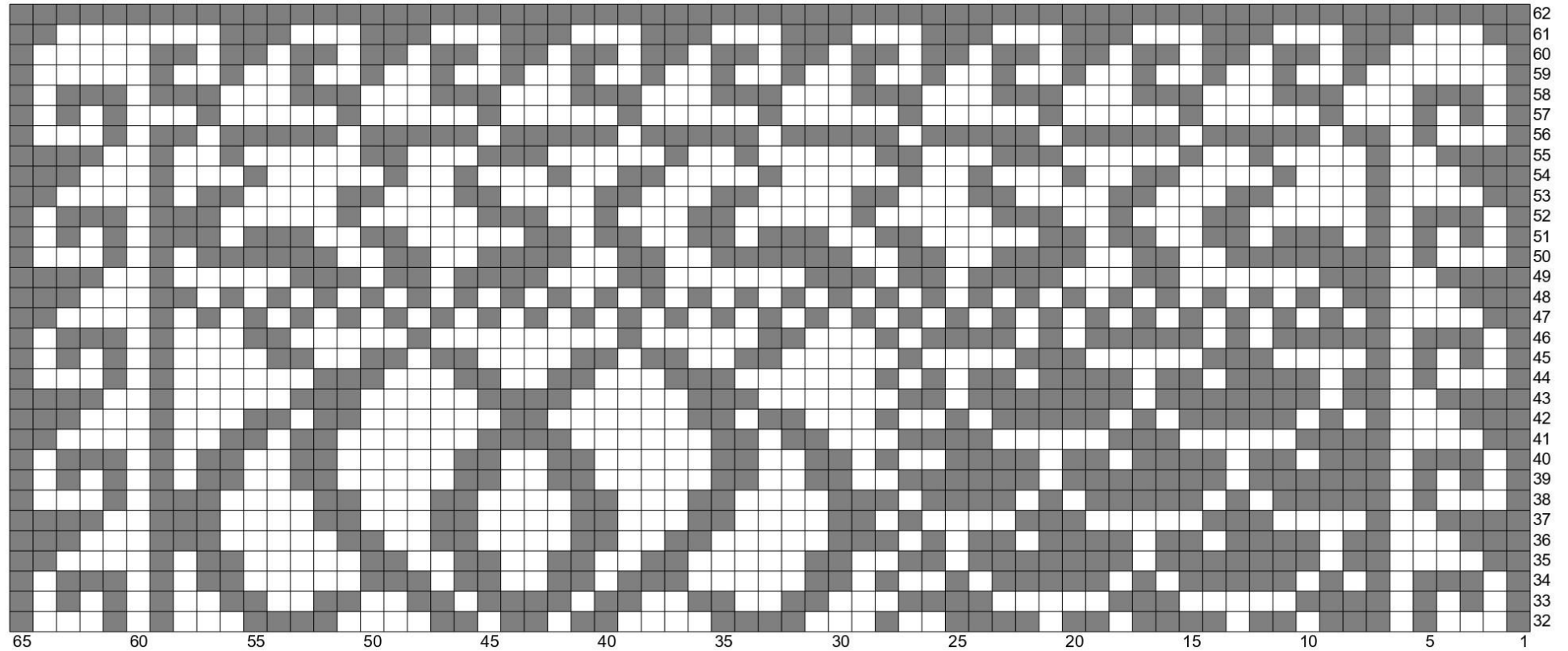


MC

CC

# CHART C

## Part 2

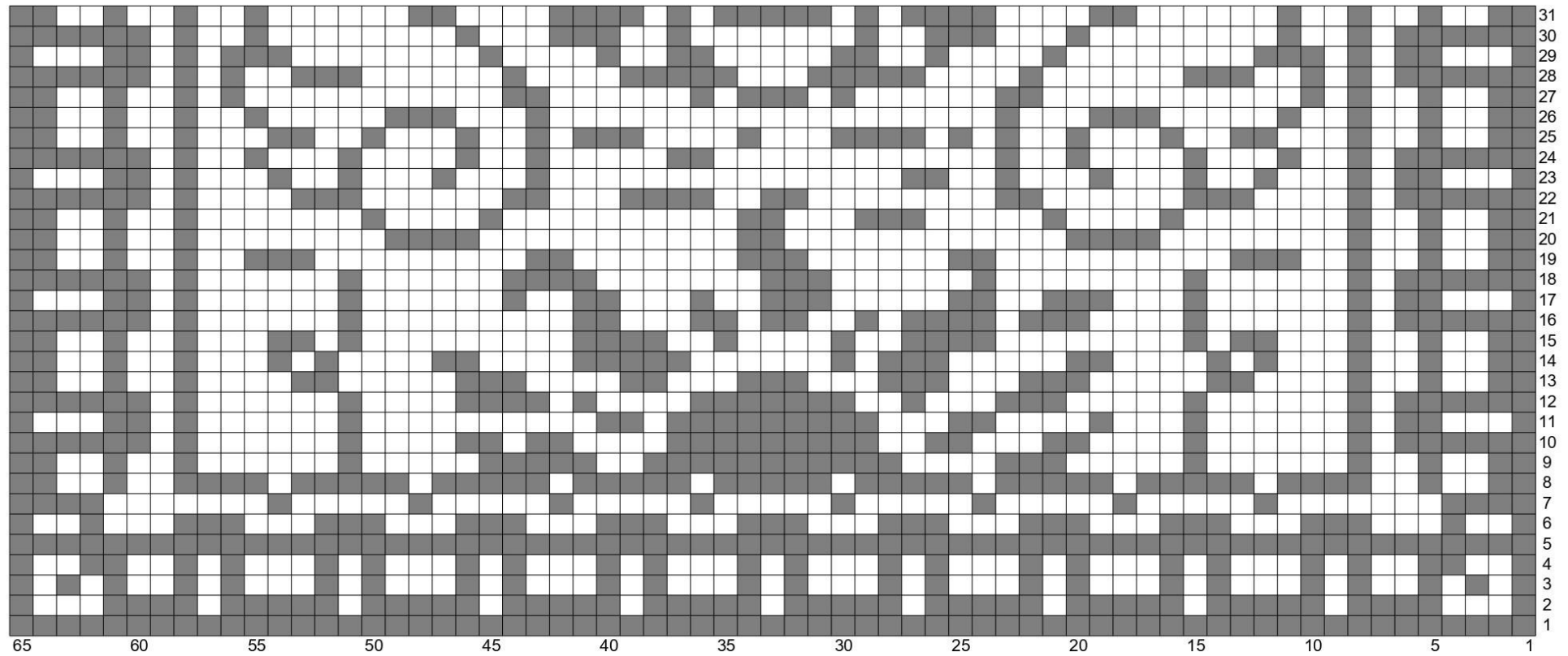


MC

CC

# CHART D

## Part 1

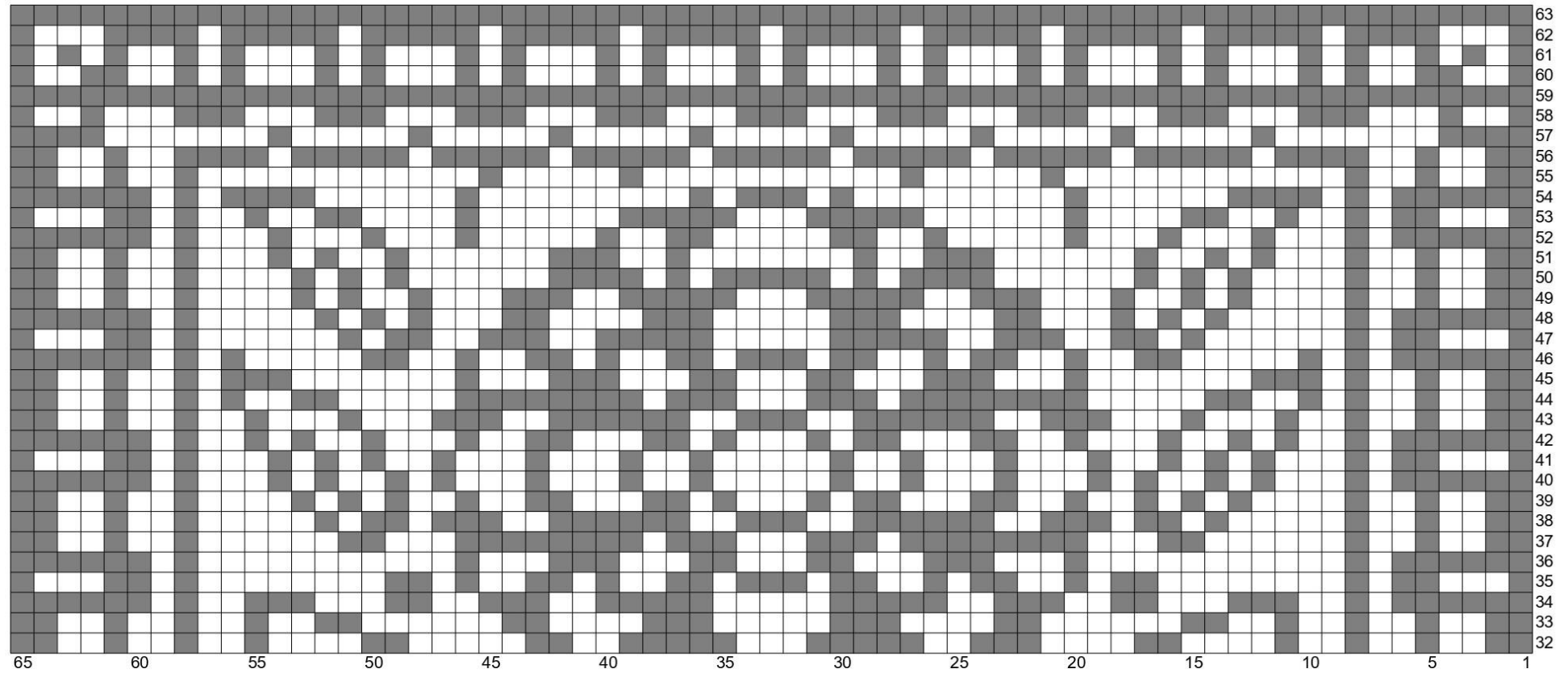


MC

CC

# CHART D

## Part 2

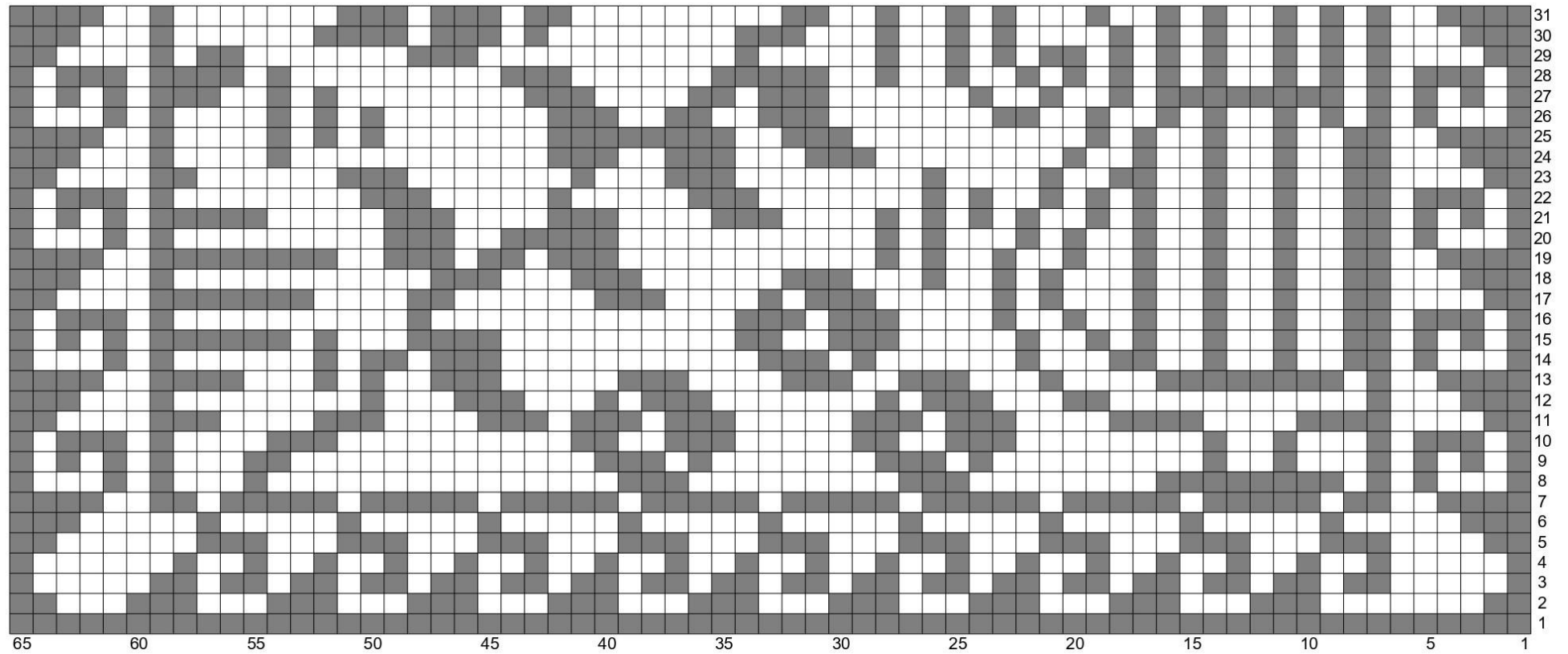


MC

CC

# CHART E

## Part 1



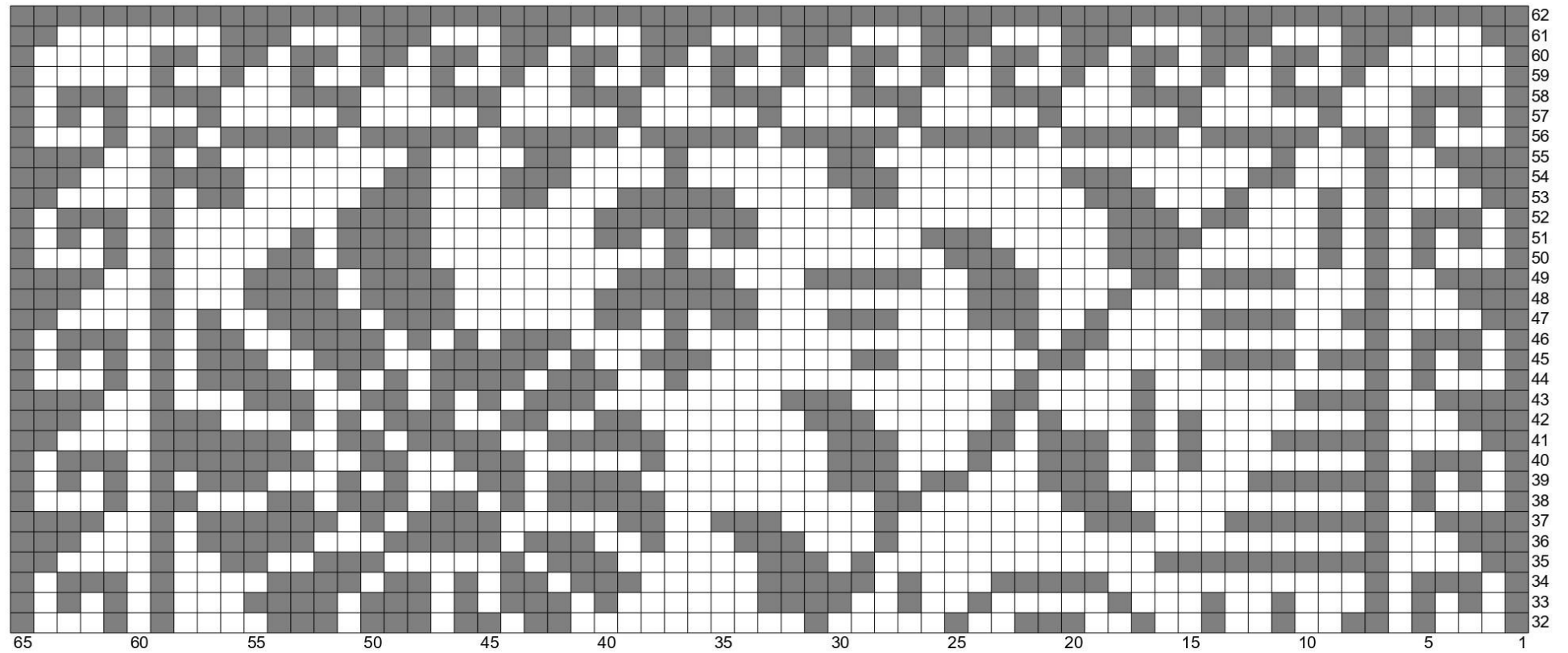
MC

CC



# CHART E

## Part 2

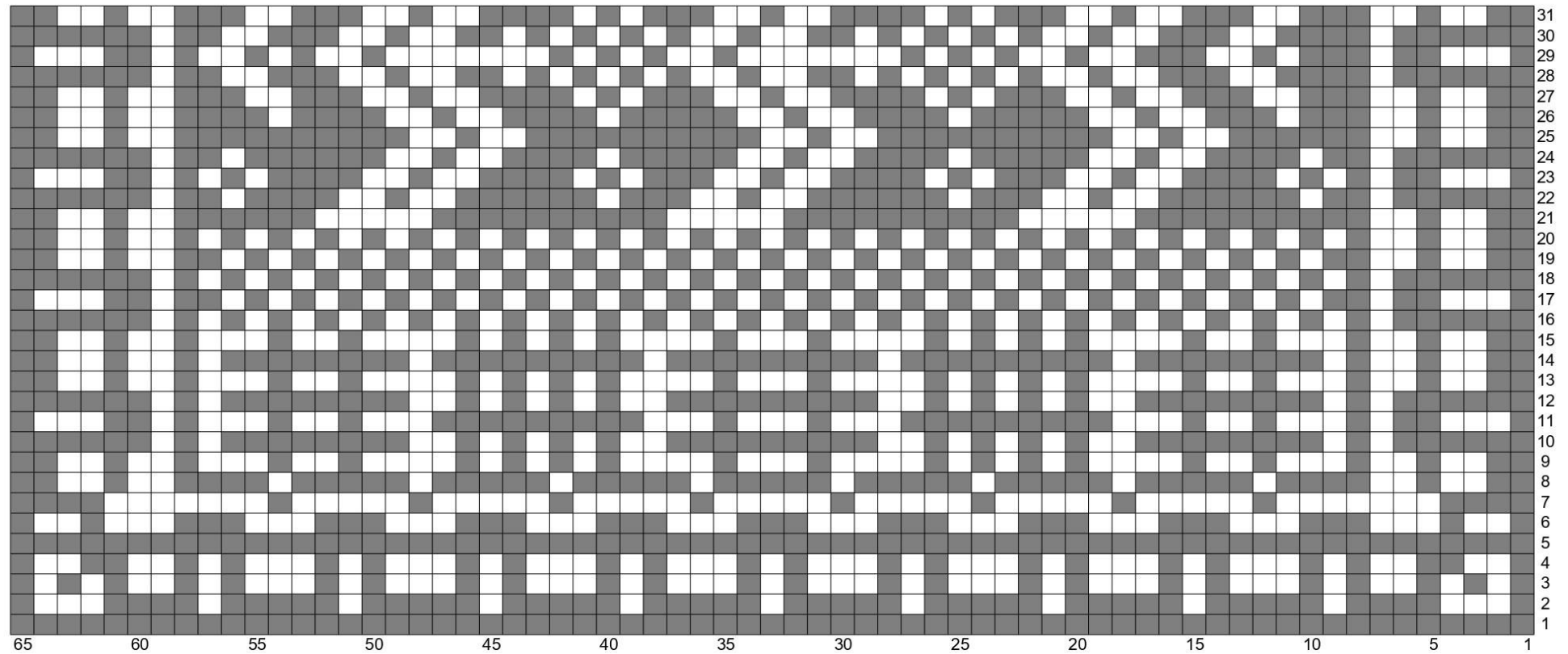


MC

CC

# CHART F

## Part 1

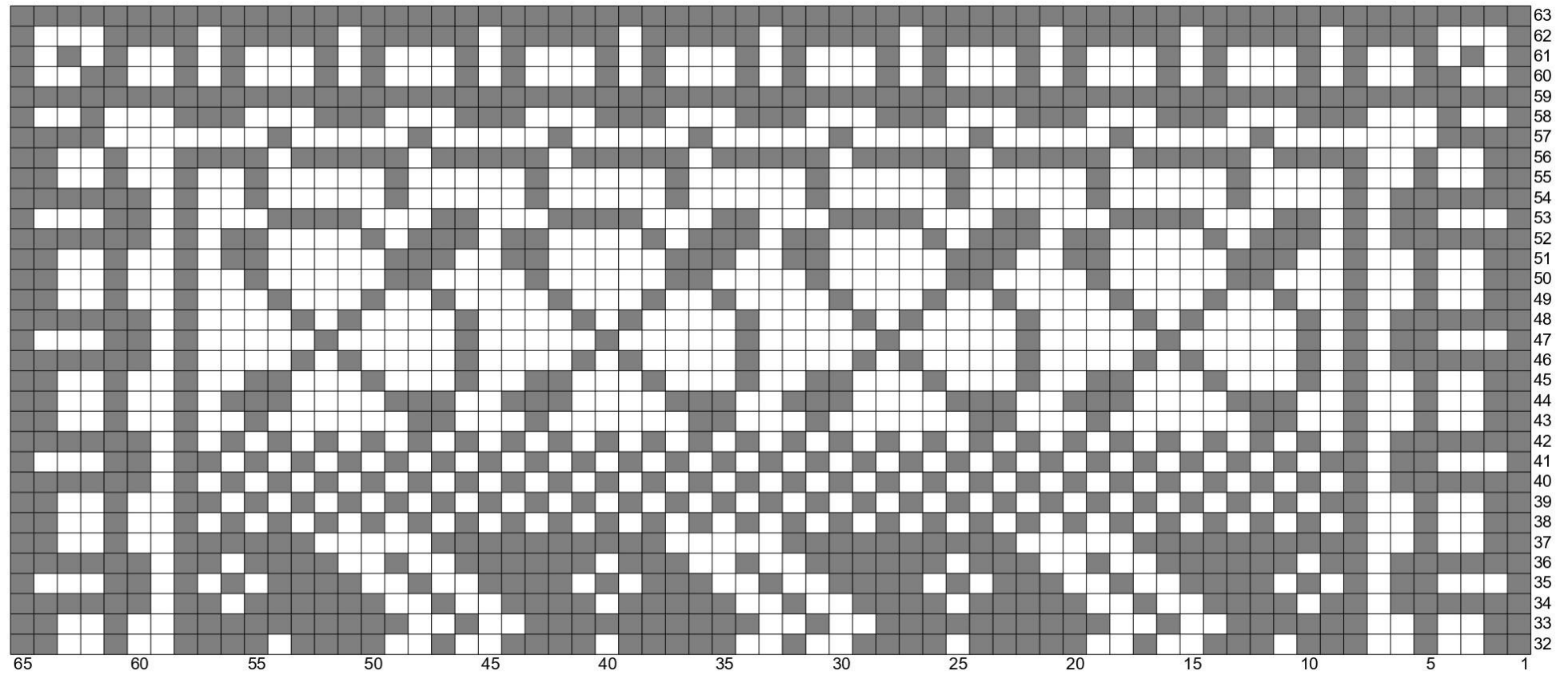


MC

CC

# CHART F

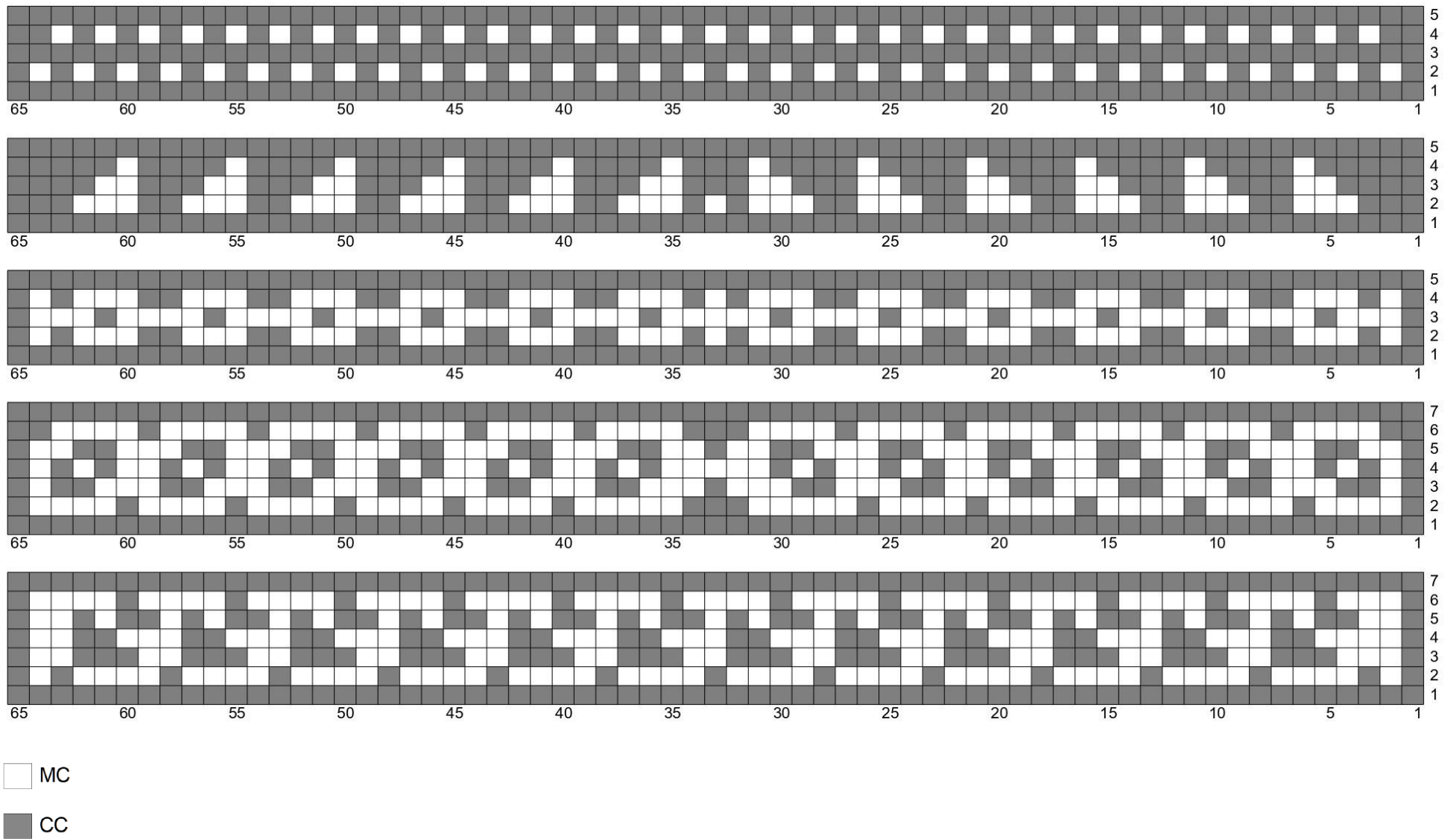
## Part 2



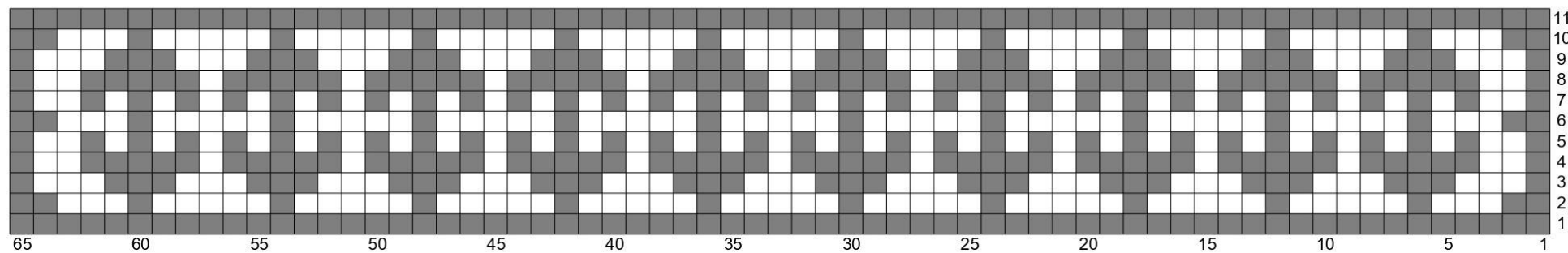
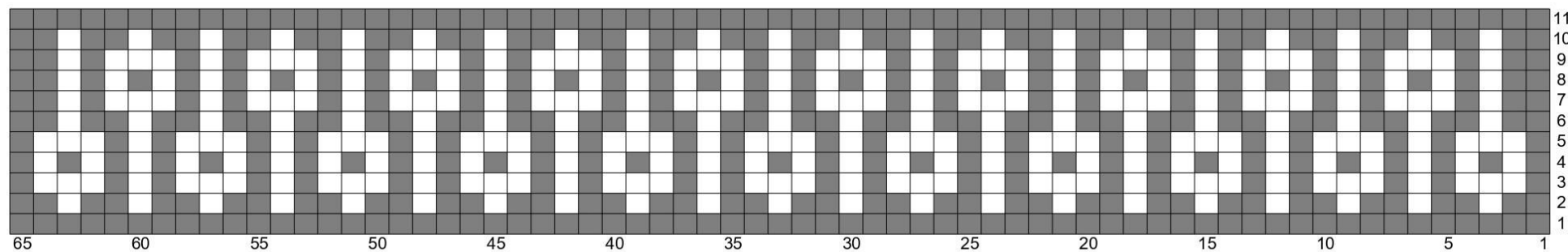
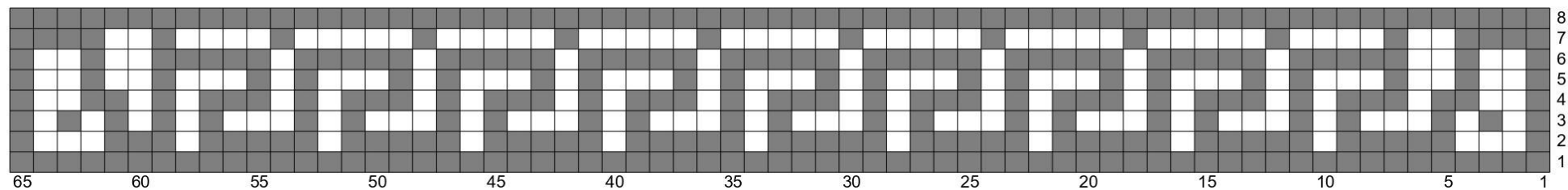
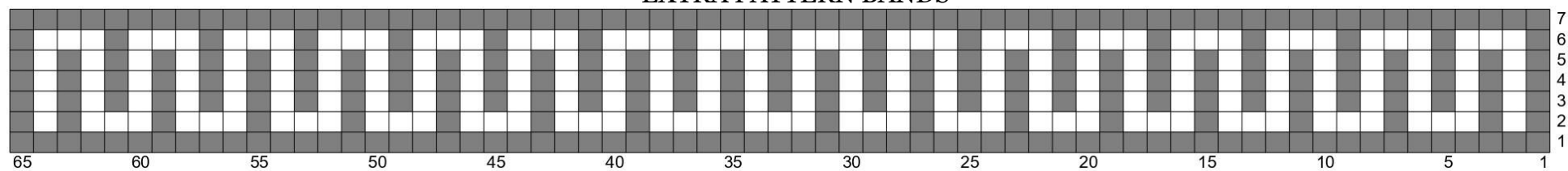
MC

CC

## EXTRA PATTERN BANDS

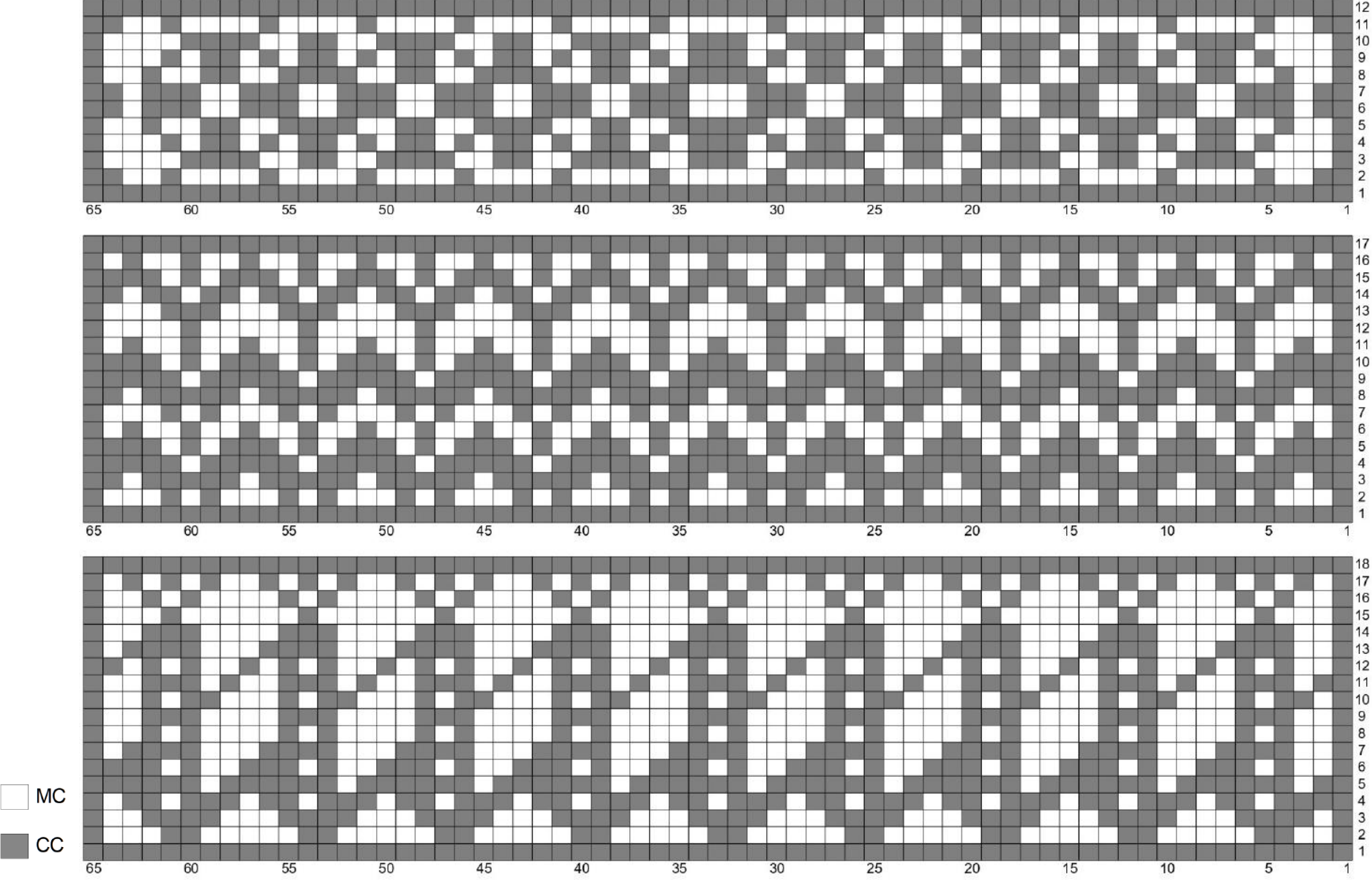


# EXTRA PATTERN BANDS



MC  
CC

EXTRA PATTERN BANDS



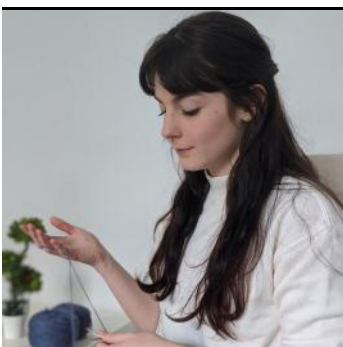


# Thank you

for choosing a Yarnflakes pattern !

I hope you enjoyed your project and will love the finished piece. If you have any questions or suggestions, please contact me on Ravelry (Yarnflakes).

I love to see you knit my designs. If you want to share pictures of your progress you can join me on my Ravelry group : [www.ravelry.com/discuss/yarnflakes](https://www.ravelry.com/discuss/yarnflakes) and tag me on Instagram @yarnflakes.



Find more designs :  
[www.ravelry.com/designers/audrey-borrego](https://www.ravelry.com/designers/audrey-borrego)

Patreon Yarnflakes

Instagram @yarnflakes

Ravelry @Yarnflakes