



Heidrun

mittens with the Estonian goat's eye motif

Yarn

120 m / 130 yards fingering weight yarn in main colour
35 m / 38 yards fingering weight yarn in contrast colour 1
35 m / 38 fingering weight yarn in contrast colour 2
35 m / 38 fingering weight yarn in contrast colour 3
35 m / 38 fingering weight yarn in contrast colour 4

The sample mittens used Rauma Finullgarn.

Needles

set of 2.5 mm double-pointed needles
set of 3 mm / US 3 double-pointed needles

Notions

stitch holder

Gauge

16 sts = 2" / 5 cm over palm pattern, unblocked

Blocked Measurements

circumference 7.5" / 19 cm
length 9" / 23 cm

4" / 10 cm from cuff to base of thumb
5" / 13 cm from base of thumb to tip

Abbreviations

CC, CC1, CC2, CC3, CC4 *contrast colour 1, 2, 3, 4*
k *knit*
k2tog *knit 2 stitches together*
MC *main colour*
p *purl*
rem *remaining*
sl *slip*
ssk *slip, slip, knit*
st(s) *stitch(es)*
tbl *through the back loop*

Mitten Body

- ➡ The mittens are knitted in the round.
- ➡ Fig. 1 on page 5 shows the backwards loop cast-on.
- ➡ The first 30 sts constitute the palm. The last 30 sts constitute the back of the hand. The chart is worked twice: once over the palm and once over the back of the hand.

With CC1 and 2.5 mm / US 1.5 needles, cast on 60 sts using a long-tail cast-on.

Join in a round and work Rnds 1-7 of Chart 1 around.

Change to 3 mm / US 2.5 needles and work Rnds 8-34. On Rnd 35, mark thumb as follows:

Right mitten:

K 3 sts, place next 11 sts on stitch holder, cast on 11 sts in pattern using the backwards loop cast-on, continue to end of rnd.

Left mitten:

K 17 sts, place next 11 sts on stitch holder, cast on 11 sts in pattern using the backwards loop cast-on, continue to end of rnd.

Then work the rest of Chart 1 = 8 sts after Rnd 76. Draw up rem sts.

Thumb

Place the 11 thumb sts on a size 3 mm / US 2.5 needle.

With MC and 3 mm / US 2.5 needles, pick up 15 sts along the top of the thumb opening: 2 sts in each gap and 11 sts across the cast-on sts = 26 sts total.

Join in a round and work Rnds 1-13 of Chart 2A - Right Thumb or Chart 2B - Left Thumb. Change to 2.5 mm / US 1.5 needles and work Rnds 14-20 = 10 sts. Draw up rem sts.

Finishing

Weave in ends. Block.



If you would like to support me or show your appreciation for my work, please consider [buying me a virtual coffee](#). Thank you for your support!

I tweet on a semi-regular basis as [@formerlymyself](#).

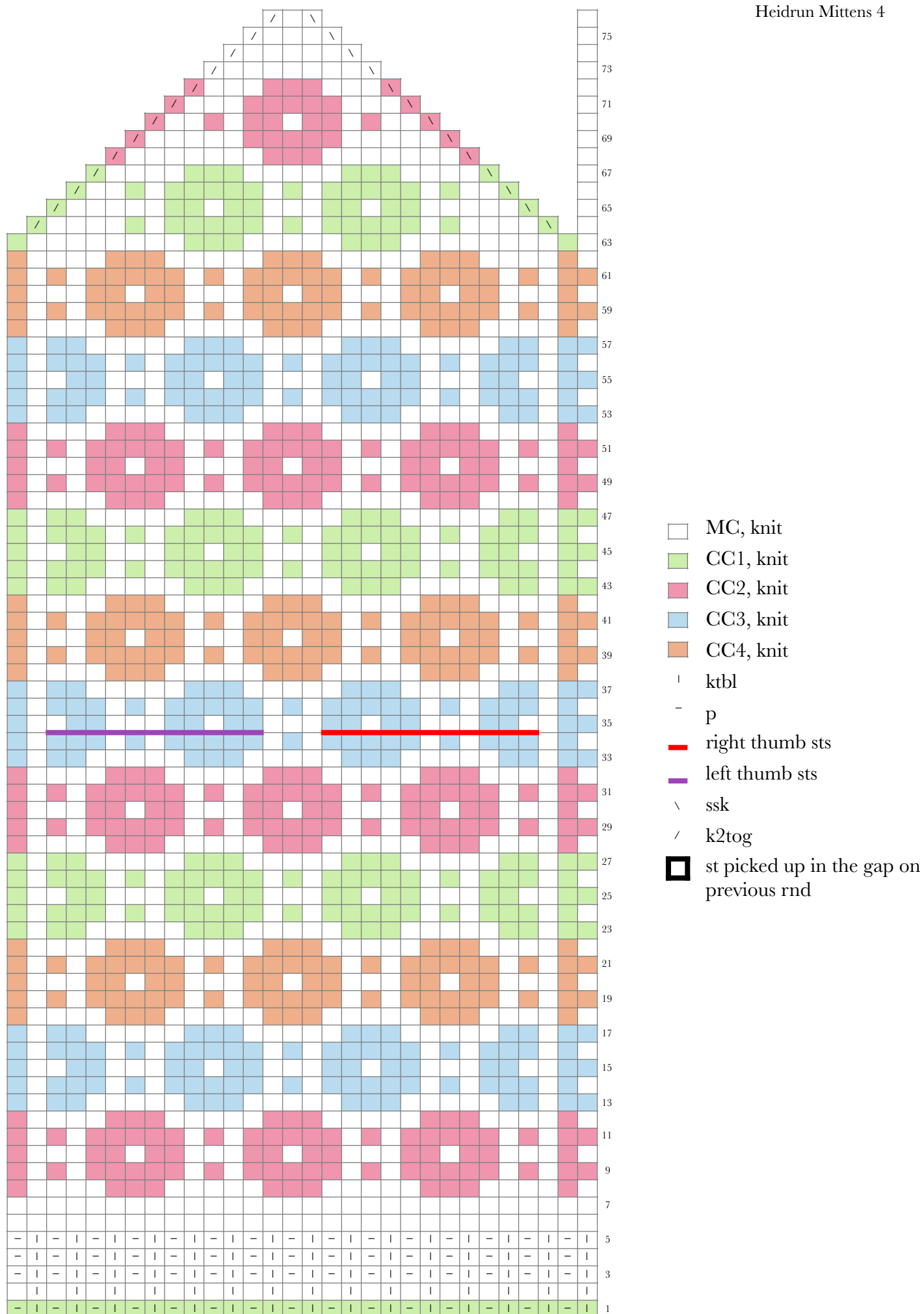




Fig. 1 - Backwards Loop Cast-On

- MC, knit
- CC1, knit
- CC2, knit
- CC3, knit
- CC4, knit
- ktbl
- p
- right thumb sts
- left thumb sts
- ssk
- k2tog
- st picked up in the gap on previous rnd

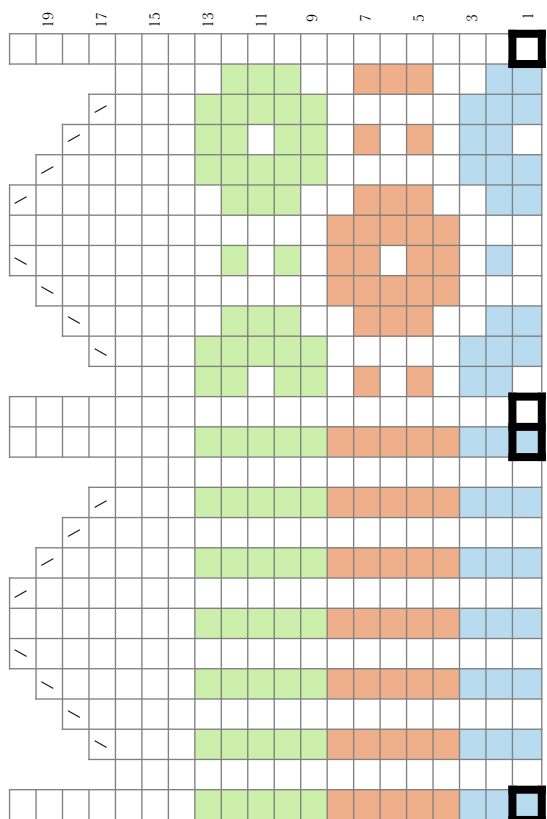


Chart 2B - Left Thumb

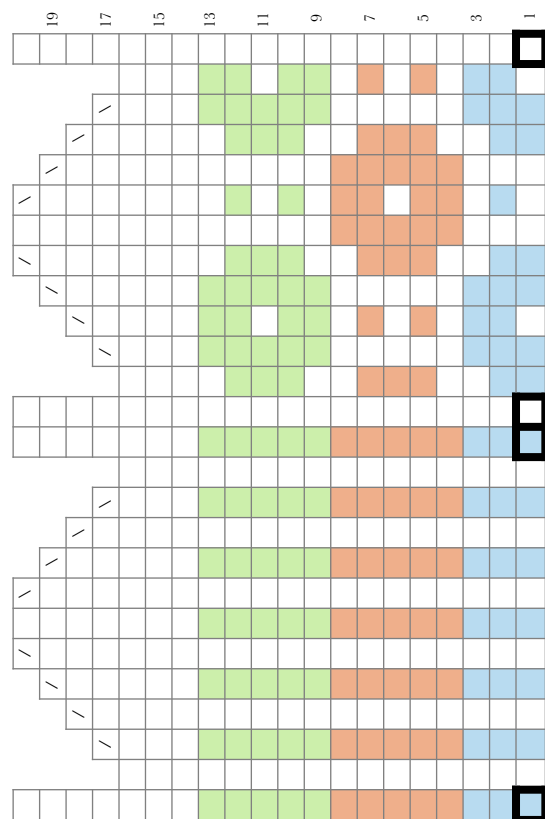


Chart 2A - Right Thumb