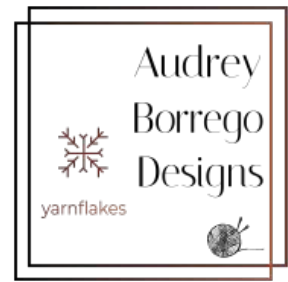


Halda



Notes

Halda is a colourwork design which can be knitted as a tube cowl or as a scarf. The pattern features instructions for both a fingering and a DK weight gauge and also includes Charts for each individual motif to create a fully customized pattern placement. With its engaging but small geometric patterns, it's a fun project suitable for adventurous colourwork beginners.

Use the hashtag #haldacowl #haldascarf to share your project.

Pattern, pictures and notes © Audrey Borrego. This pattern is for personal use only.

Instructions are given for a tube cowl or a scarf, at a fingering or at a DK weight gauge. All circumferences and lengths as well as number and placement of colours are customizable.

Samples show a fingering weight cowl using multiple background colours and a DK weight scarf.

Yarn :

Cowl :

Fingering weight : MC 315 m – 345 yds, CC 295 m – 325 yds

DK weight : MC 270 m – 295 yds, CC 255 m – 280 yds

Scarf :

Fingering weight : MC 1000 m – 1095 yds, CC 760 m – 835 yds

DK weight : MC 820 m – 900 yds, CC 620 m – 680 yds

To use fingering weight held double for the DK version, plan for twice those amounts.

You can use any number of colours and arrange them in various ways. To replicate the sample multicolour cowl layout, you will need 3 different MC as follows :

MC1 (mustard) : 120 m – 135 yds

MC2 (dark pink) : 85 m – 95 yds

MC3 (light blue) : 110 m – 120 yds

The fingering weight cowl sample was knit with Filcolana Arwetta (210 m – 230 yds / 50 g) in 136 (MC1), 236 (MC2), 808 (MC3) and 195 (CC).

The DK weight scarf sample was knit with Filcolana Arwetta held double in 957 (MC) and 147 (CC).

Needles :

Circular needles with appropriate cable length to knit in the round (40 cm – 16" maximum) or magic loop.

Fingering : 3 mm (US 2.5) needles

Scarf Ribbing : 2.75 mm (US 2) needles

DK : 4 mm (US 6) needles

Scarf Ribbing : 3.75 mm (US 5) needles

or sizes required to get gauge

Gauge :

Fingering Gauge : 28 sts x 30 rounds per 10 cm – 4" in stranded colourwork after blocking

DK Gauge : 22 sts x 24 rounds per 10 cm – 4" in stranded colourwork after blocking

Note that a different gauge will affect size and yarn usage.

Size :

Cowl :

Fingering : 23 cm – 9" wide x 75 cm – 29 1/2" circumference (adjustable)

DK : 25 cm – 9 3/4" wide x 75 cm – 29 1/2" circumference (adjustable)

Scarf :

Fingering : 23 cm – 9" wide x 200 cm – 78 3/4" long (adjustable)

DK : 25 cm – 9 3/4" wide x 200 cm – 78 3/4" long (adjustable)

Notions :

2 different stitch markers, tapestry needle and scissors
Scrap yarn for the provisional cast-on and to place sts on hold
Crochet hook the same size as your knitting needle for the provisional cast-on
A spare needle for grafting
Row counter recommended

Techniques used :

Cowl : Provisional cast-on, grafting
Scarf : Ribbed edges
Two colours stranded knitting in the round with few floats to catch
Pattern includes charted instructions
Charts contrast show a light background (MC) and dark patterns (CC)

Colourwork :

Catching floats : in fingering weight, you can catch floats when skipping more than 7 stitches and in DK weight when skipping more than 6 stitches. You may do it more often if you prefer, just make sure not to catch a float in the same place in two consecutive rounds.

Colour dominance : due to the geometric nature of this design, you can often choose either colour to stand out in a pattern section. Most of the Chart is designed so that MC is the background colour while CC forms the motifs.

To have consistent colour dominance : hold the motif colour to the left and always carry it under the background colour without twisting the strands.

You may notice that your fabric is rather irregular prior to blocking. This is common even amongst experience colourwork knitters. Do not let it bother you because as long as you are using a wool-based yarn, blocking will massively improve this.

Abbreviations :

- st(s) : stitch(es)
- rnd(s) : round(s)
- BOR : beginning of round
- m : marker / PM : place marker / sm : slip marker
- MC : main colour
- CC : contrast colour
- k : knit / p : purl
- *-* : repeat instructions between asterisks

Reading Charts :

When knitting in the round, always read the Chart from right to left.

You will find two charts depending on the chosen gauge / yarn weight. Note that to be easier to read, the Charts have been split into smaller parts.

Fingering weight pages 7-12

DK weight pages 13-17

To create a multicolour background (as shown in the cowl sample), refer to the colour column to the side of the Chart. This shows which MC was used on these rounds.

On pages 18-20, you will also find the Charts for each individual pattern repeat (marked with red borders). Feel free to make your own pattern arrangement, using those Charts as references and placing them however you like. You can follow the stitch counts given in the pattern or adjust them to match your custom design.

Each of those Charts also show you how to neatly complete a motif with symmetrical edges.

Cowl Instructions

Cast-on and set-up

With the [crochet method](#) or your preferred method, provisionally cast-on

Fingering : 130 sts

DK : 110 sts

on scrap yarn.

(Provisional Cast-On using a crochet hook by Very Pink Knits)

Knit the sts with MC, your first background colour.

Being careful not to twist the sts, join to work in the round and PM for BOR.

PM also after

Fingering : 65 sts

DK : 55 sts

for the side.

Cowl

Work the Chart, making two repeats on each round, until the cowl measures about 75 cm – 29 1/2" from cast-on or desired length.

To make a longer cowl that can be folded twice around the neck, it should measure about 130 cm – 51 1/4".

At the pattern round gauges both for fingering and DK weight, the whole Chart matches the necessary length. If your round gauge differs or you wish to work a different length: end preferably after a complete motif or a plain MC rnd.

Finishing

Cut yarns, leaving a tail of MC, your last background colour about 4 times the cowl's circumference then remove markers and place sts on hold.

Weave in all ends on the inside and gently block the cowl.

Once completely dry, place the end sts back on the needles.

Unravel the provisional cast-on and place the beginning sts on another set of needles. Arrange the sts to make sure they are not twisted.

Note : If you do not want to work a grafting on a large number of sts, you may use a [three needle bind-off](#) instead. Because you will be doing it facing the right side of the cowl, it will create a visible small seam.

(3-needle BO tutorial by Very Pink Knits)

For a moebius effect, you can twist the cowl once. To do this, you will have to slip half the sts on one end of the tube so that your needles sit at the side of the cowl, while they remain at the BOR on the other end.

For a regular loop cowl, keep it straight.

Using the MC end tail, graft the beginning and end sts together to close the tube using the [kitchener stitch](#).

(Kitchener stitch tutorial by Very Pink Knits)

Weave the grafting ends inside the cowl.

Scarf Instructions

Ribbed edge

Using MC and smaller needles, cast-on

Fingering : 130 sts

DK : 110 sts

with a long-tail cast-on.

Being careful not to twist the sts, join to work in the round and PM for BOR.

PM also after

Fingering : 65 sts

DK : 55 sts

for the side.

ribbing rnd : k2, *p1, k4* to 3 sts before side m, p1, k2, sm (side), k2, *p1, k4* to last 3 sts, p1, k2

Work the ribbing rnd until work measures 12 cm – 4 ³/₄" from cast-on or desired ribbing length.

Note down the number of rnds worked to replicate it on the other side.

Knit 1 rnd in MC.

Switch to main needles.

Scarf

Work the Chart, making two repeats on each round, until the scarf measures about 188 cm – 74" from cast-on or 12 cm – 4 ³/₄" less than desired length.

Feel free to customize your project and rearrange the different motifs.

The remaining length corresponds to the second ribbed edge, mirroring the first.

Note that though the Chart is long, it will not cover the entire length necessary for the scarf. After working the entire Chart, start it again until you reach the desired length.

The DK scarf sample worked the Chart completely (rnds 1 to 180) 2 times, then worked rnds 1 to 68 once more (428 total rnds).

End preferably after a complete motif or a plain MC rnd.

Cut CC.

Switch to smaller needles.

Knit 1 rnd in MC.

Ribbed edge

ribbing rnd : k2, *p1, k4* to 3 sts before side m, p1, k2, sm (side), k2, *p1, k4* to last 3 sts, p1, k2

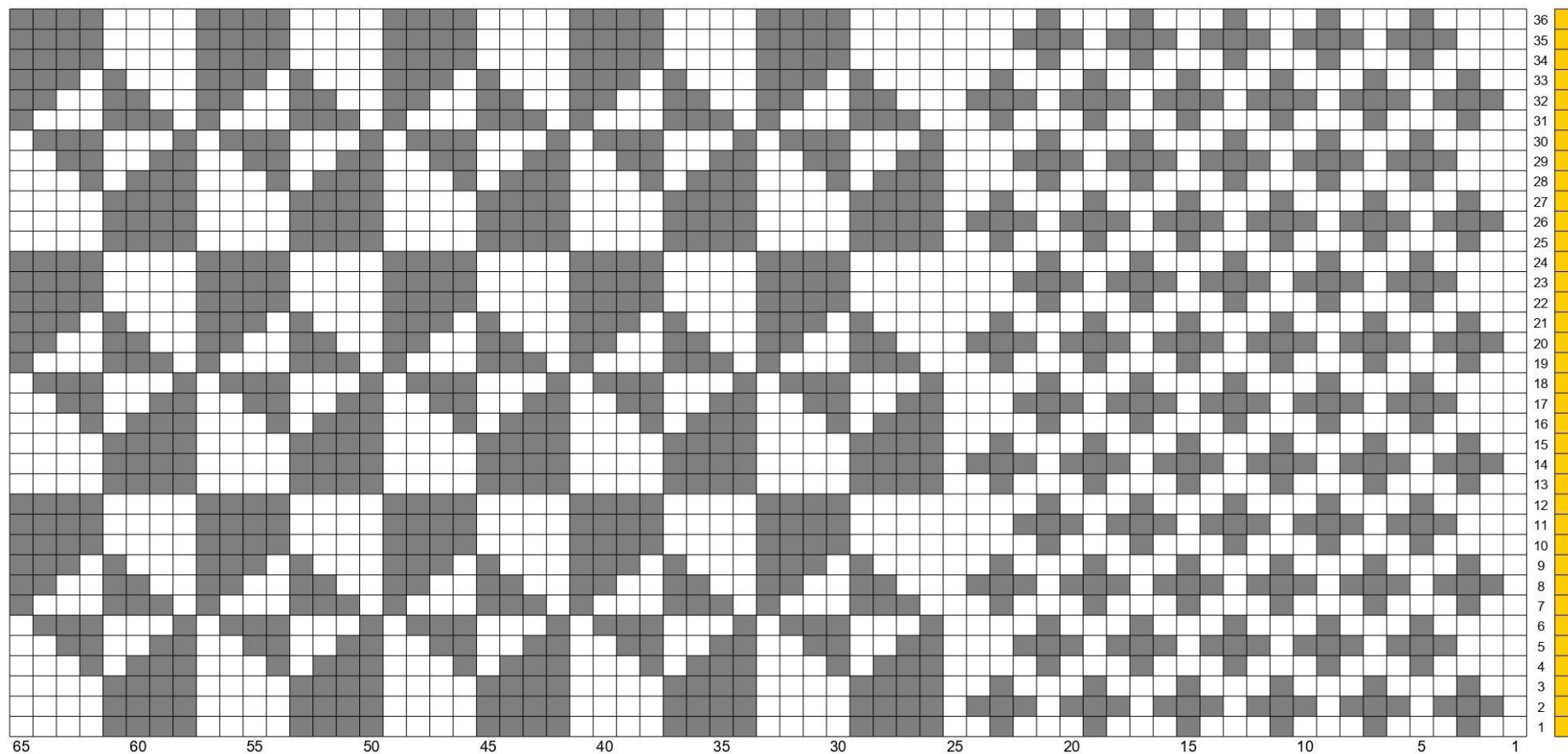
Work the ribbing rnd until the end ribbing's length matches the length of the ribbing at the beginning of the scarf.

Finishing

Loosely bind-off all stitches in pattern.

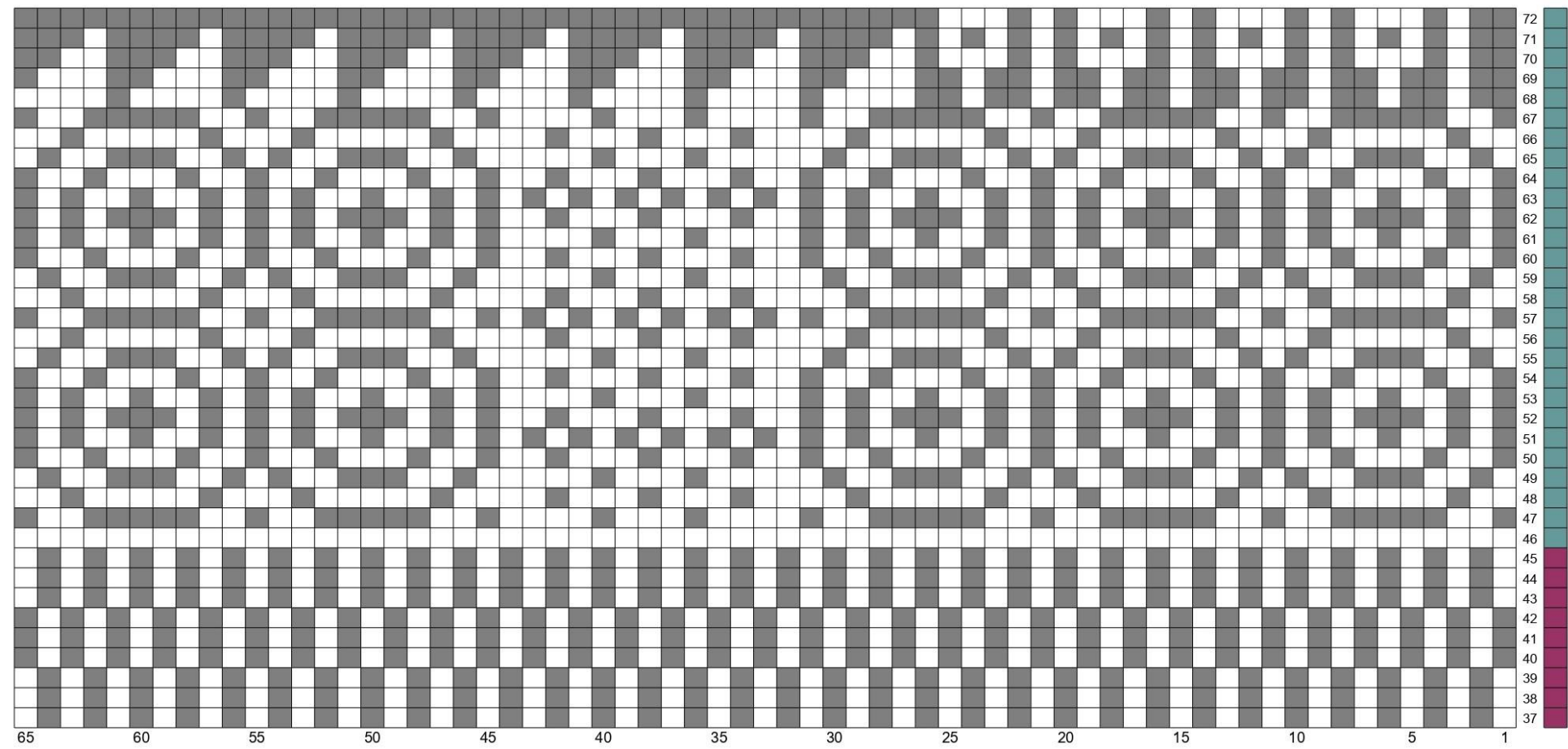
Weave in all ends on the inside and gently block the scarf.

FINGERING CHART PART 1

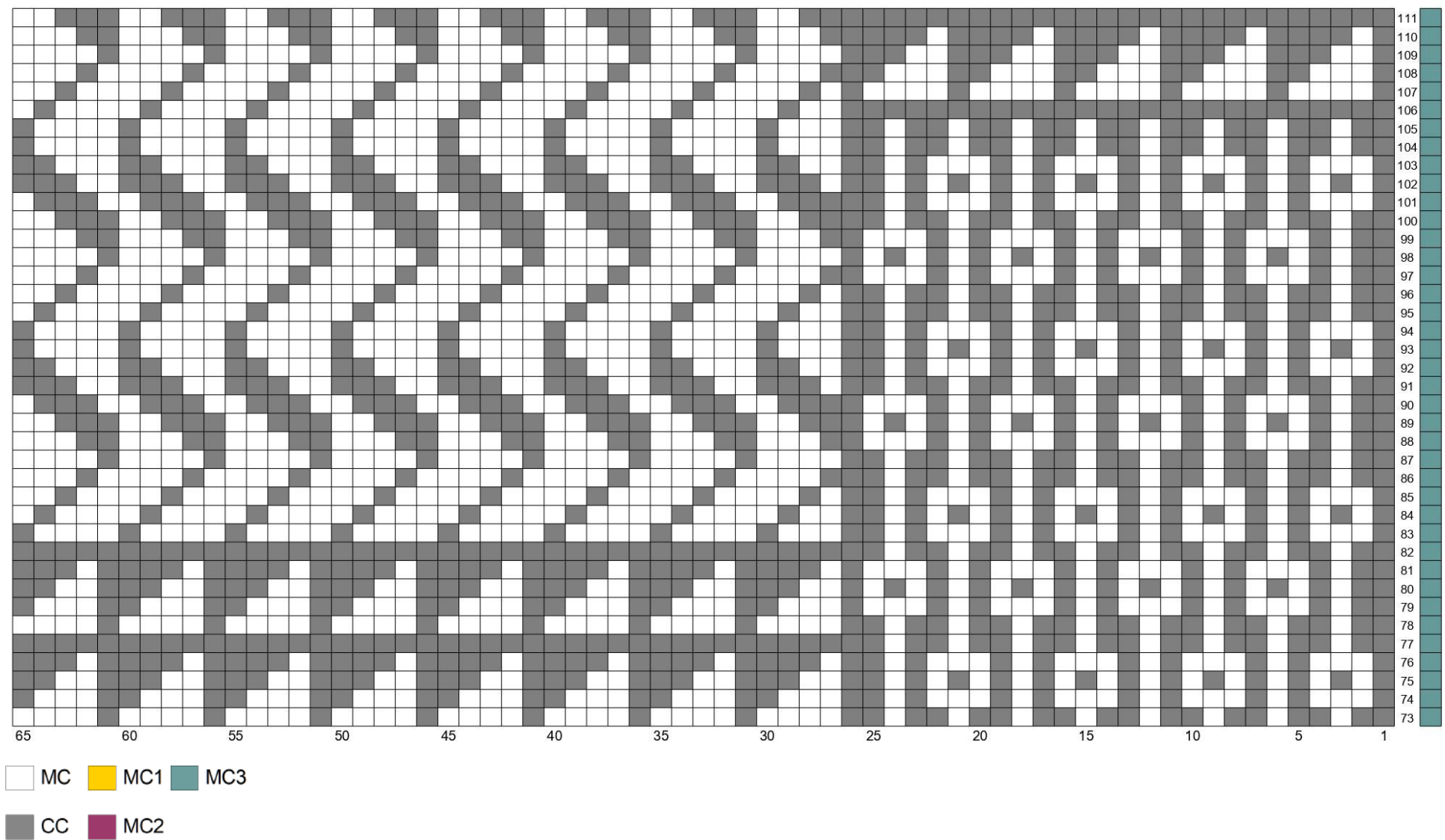


MC
 MC1
 MC3
 CC
 MC2

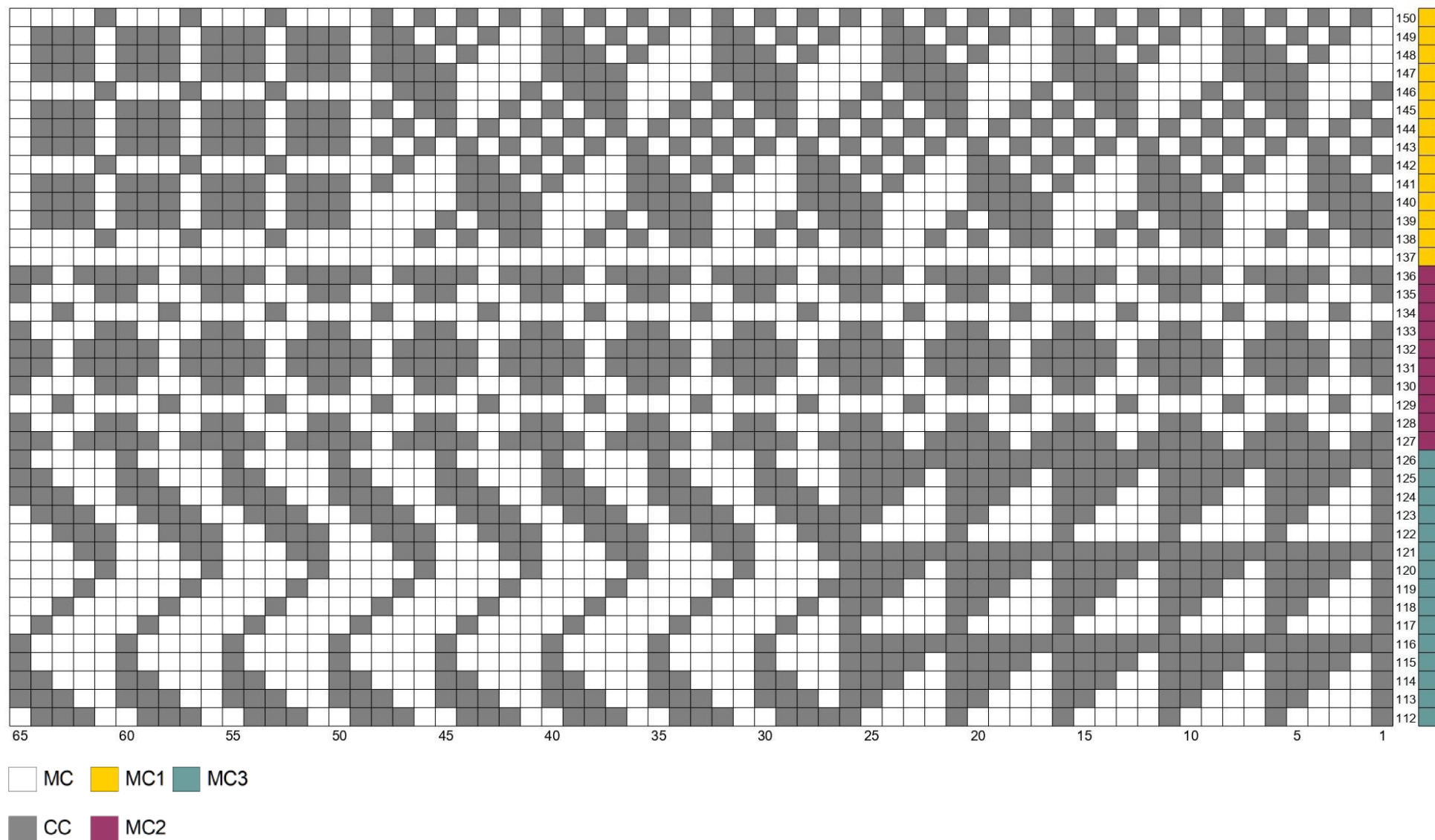
FINGERING CHART PART 2



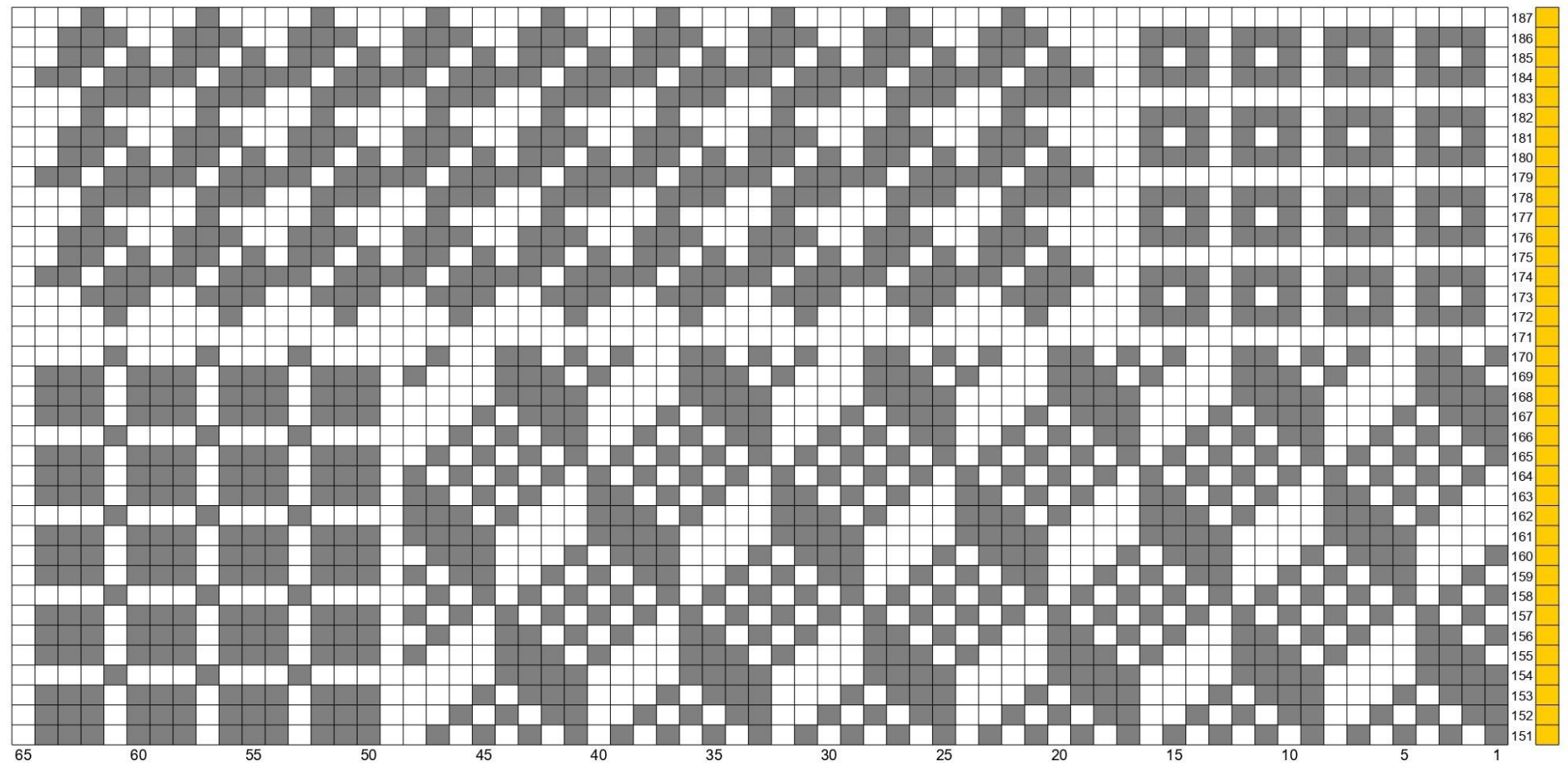
FINGERING CHART PART 3



FINGERING CHART PART 4

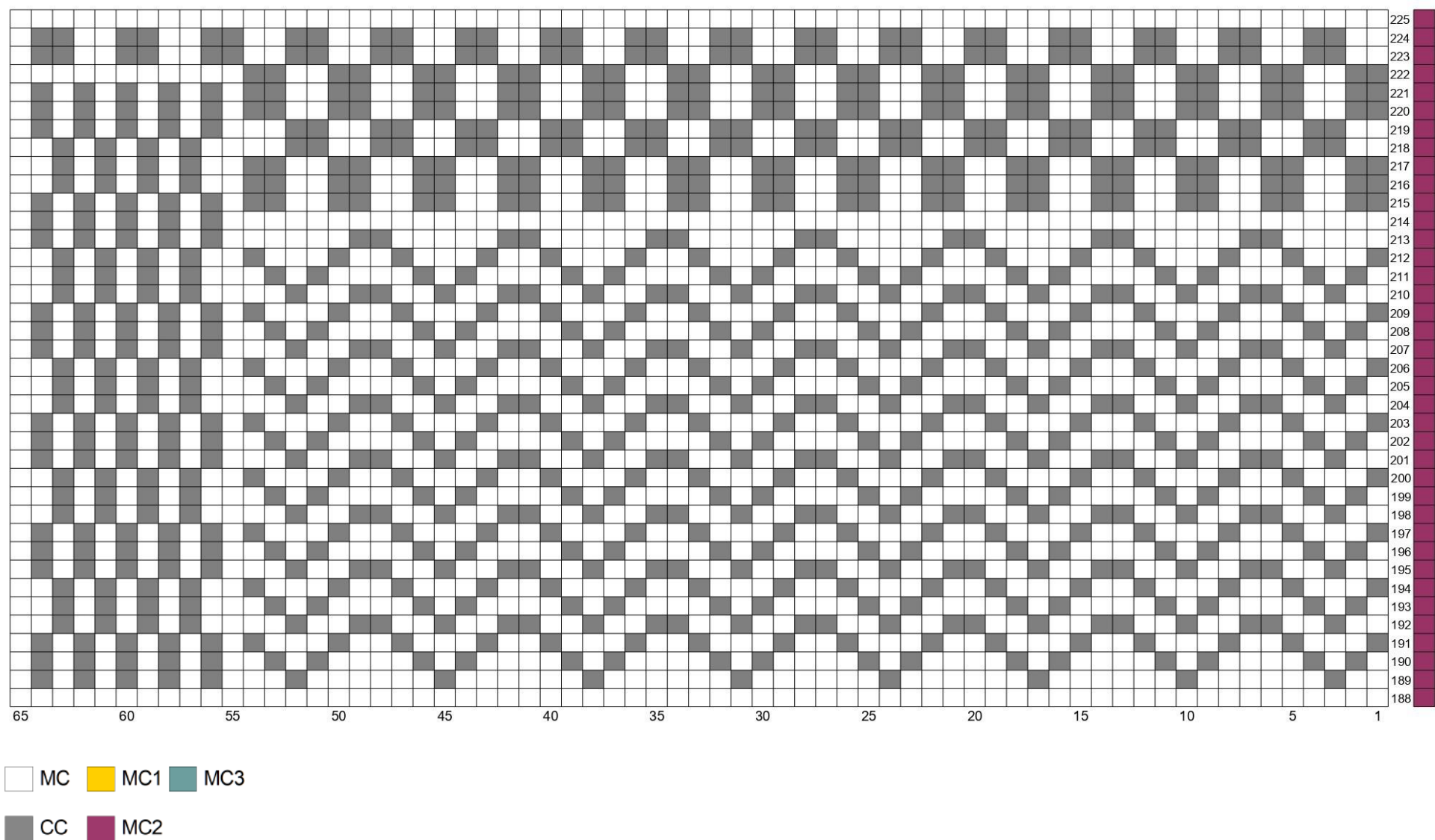


FINGERING CHART PART 5

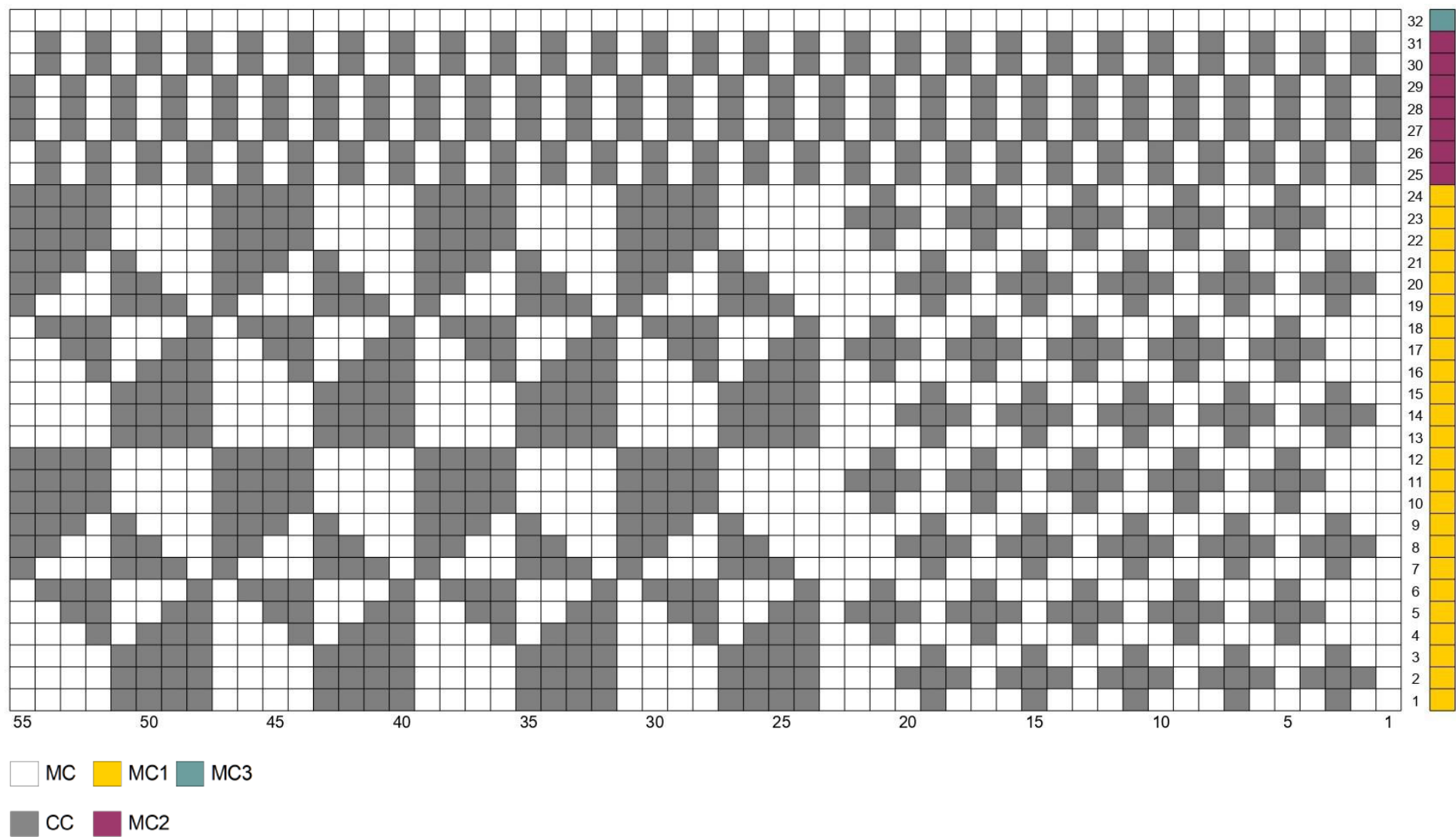


MC MC1 MC3
CC MC2

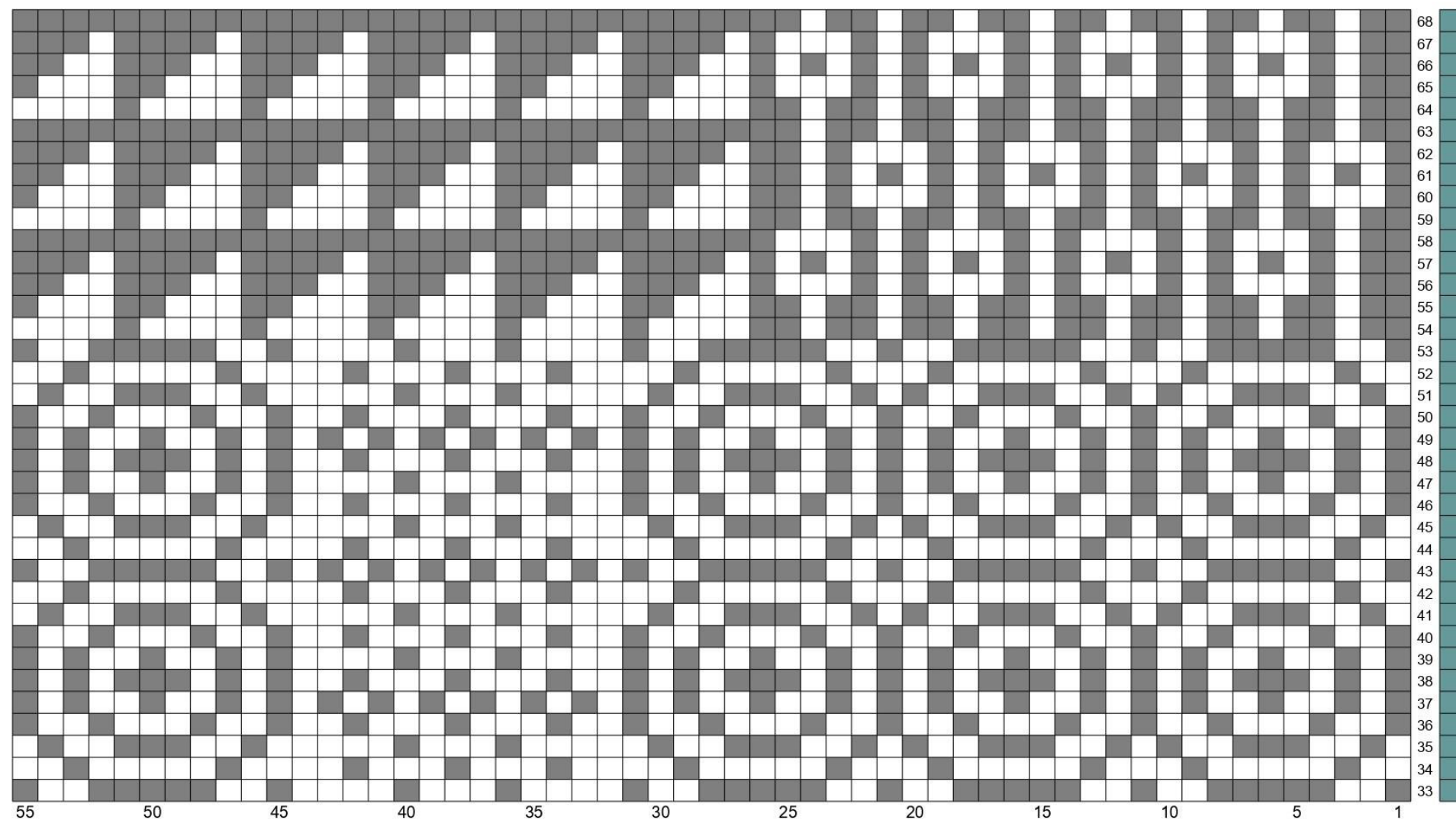
FINGERING CHART PART 6



DK CHART PART 1



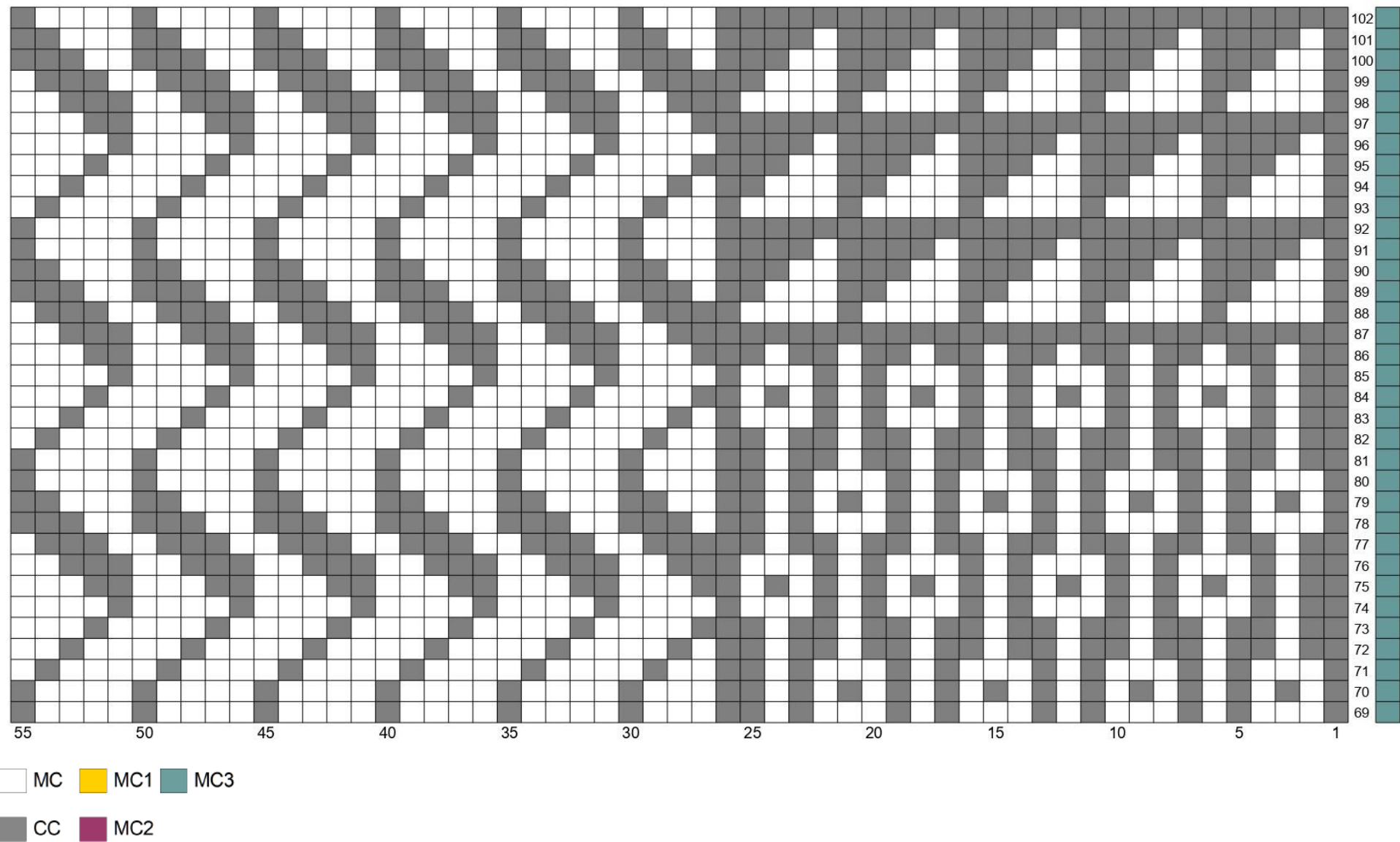
DK CHART PART 2



MC MC1 MC3

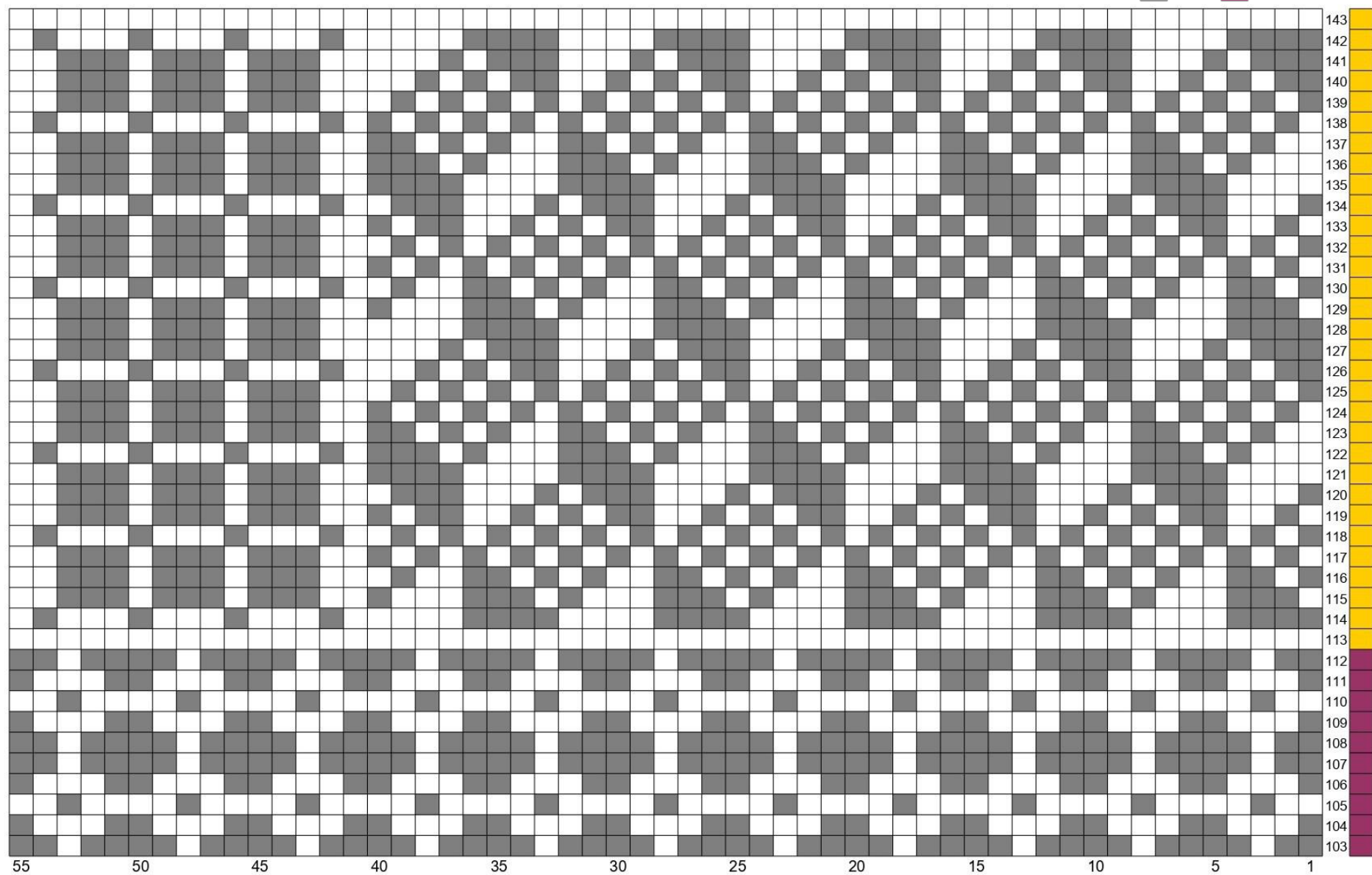
CC MC2

DK CHART PART 3



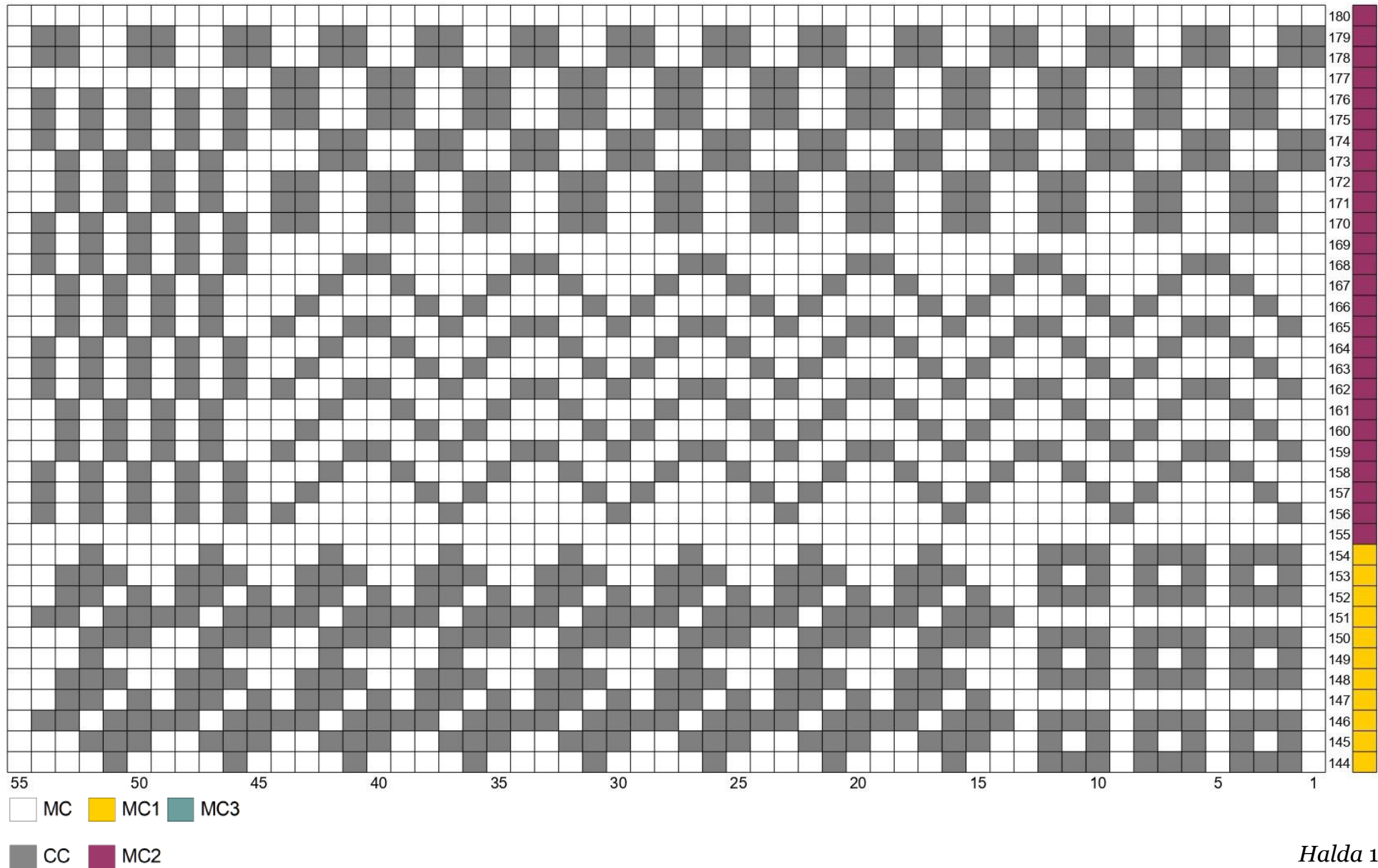
DK CHART PART 4

MC MC1 MC3
CC MC2

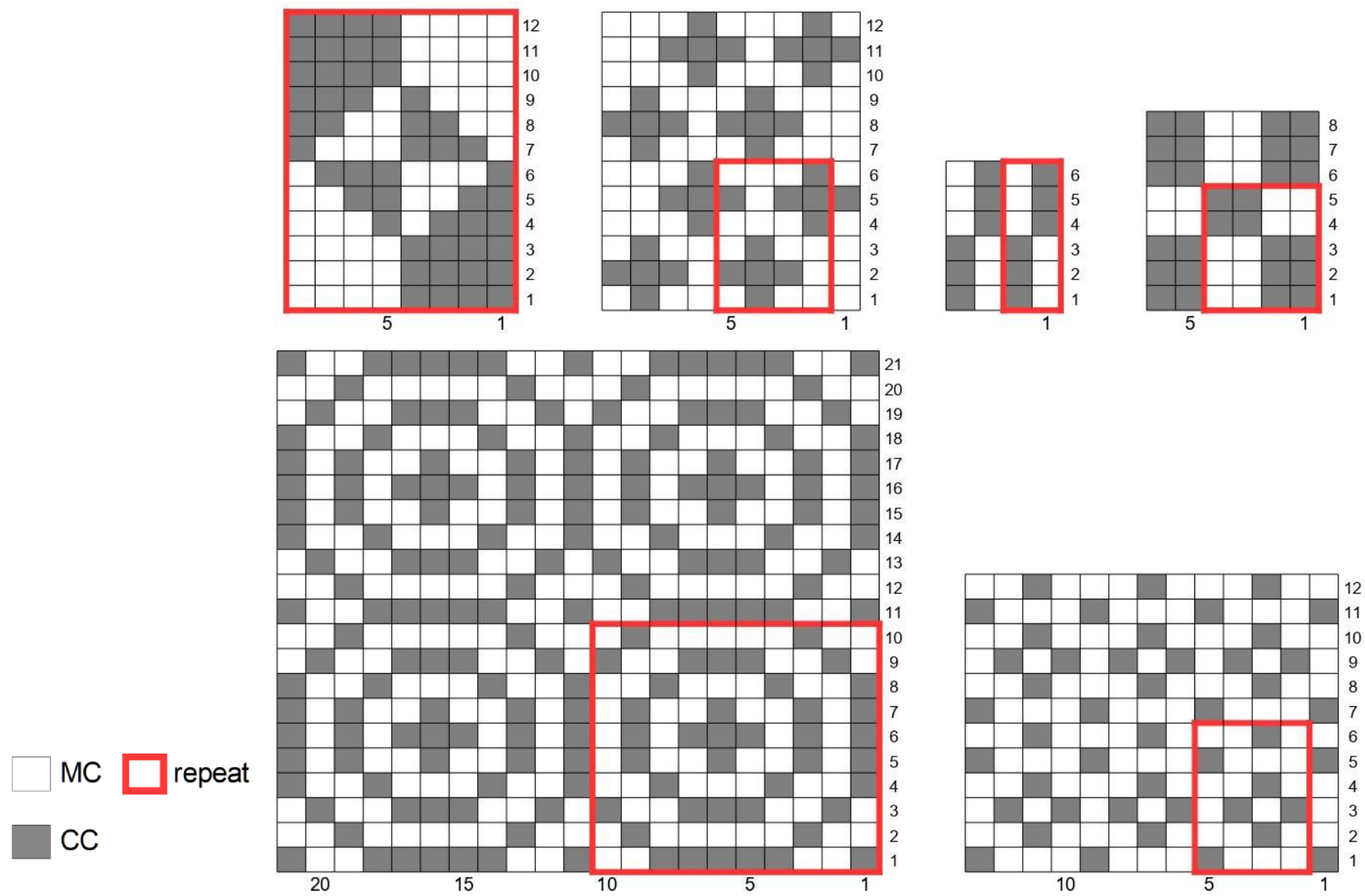


Halda 16

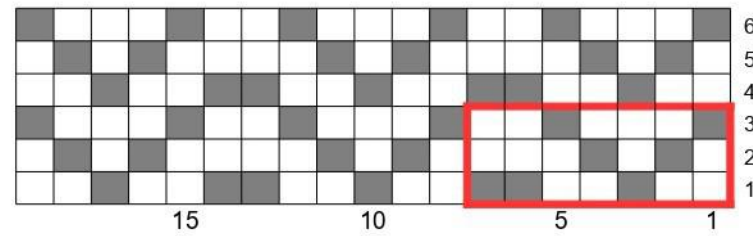
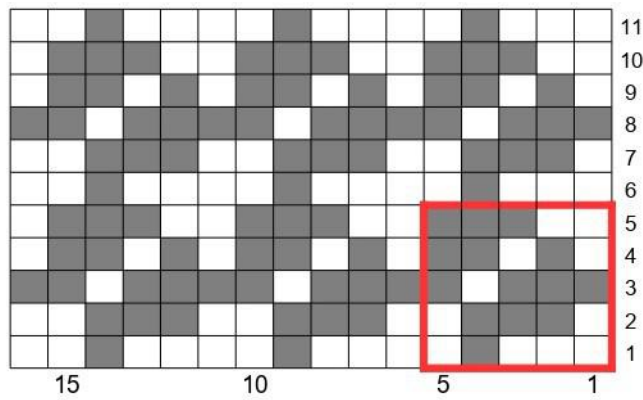
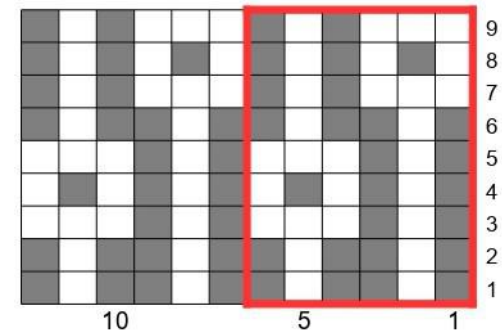
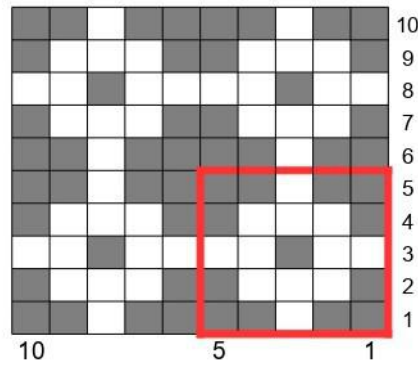
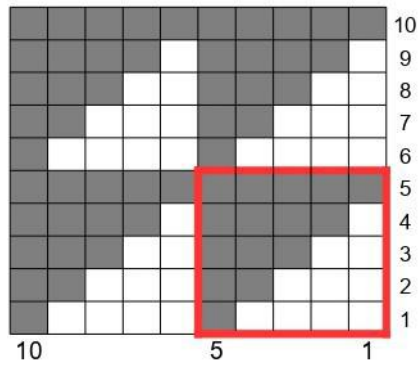
DK CHART PART 5



INDIVIDUAL MOTIFS



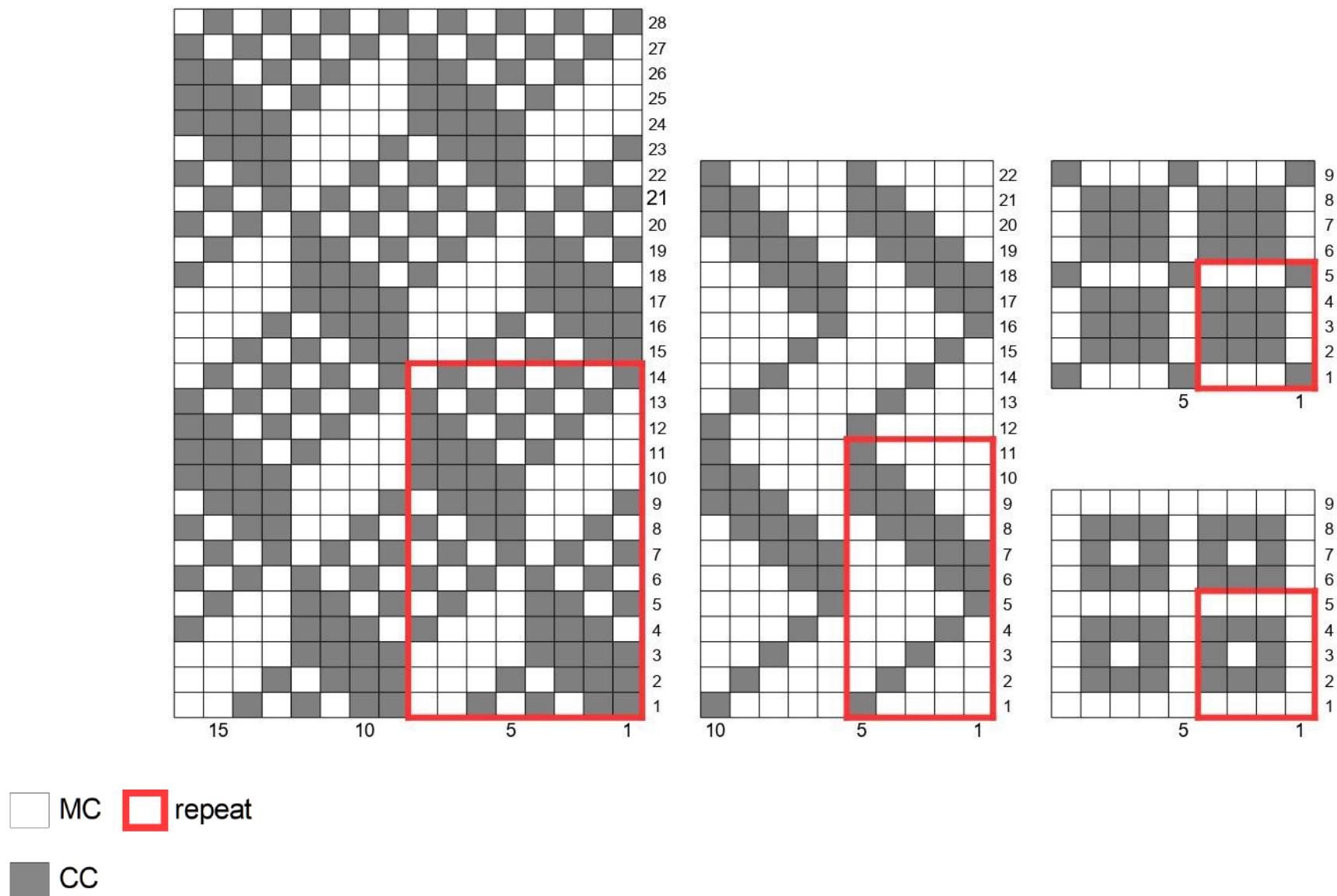
INDIVIDUAL MOTIFS



MC
 repeat

CC

INDIVIDUAL MOTIFS

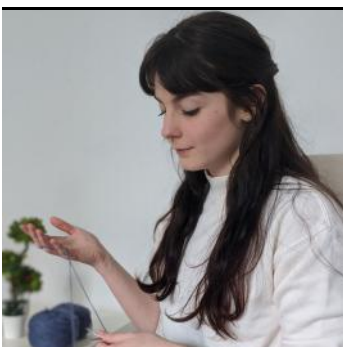


Thank you

for choosing a Yarnflakes pattern !

I hope you enjoyed your project and will love the finished piece. If you have any questions or suggestions, please contact me on Ravelry (Yarnflakes).

I love to see you knit my designs. If you want to share pictures of your progress you can join me on my Ravelry group : www.ravelry.com/discuss/yarnflakes and tag me on Instagram @yarnflakes.



Find more designs :
www.ravelry.com/designers/audrey-borrego

Patreon Yarnflakes

Instagram @yarnflakes

Ravelry @Yarnflakes