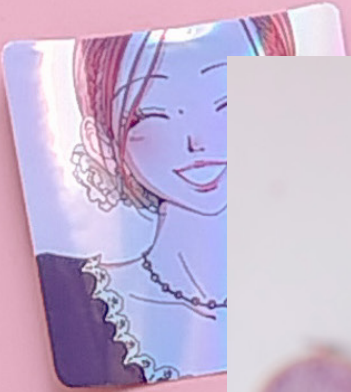
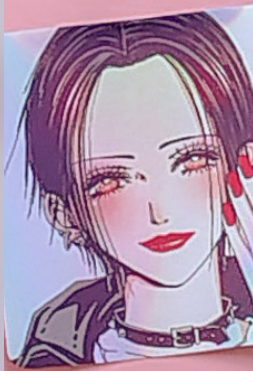


Hachi Beret

ENG - RIGHT HANDED



Fran
Lopez





Details

This beret is inspired by Nana Komatsu's (a.k.a. Hachi) style from the anime and manga **Nana**.

With this design, I wanted to express a kawaii style with strawberries, imagining that if Hachi saw it, she would want to wear it without hesitation.

CONSTRUCTION

Worked from the bottom up seamlessly in the round.

The brim is worked in 3cm / 1¼" of ribbing, followed by 3.5cm / 1⅜" of stockinette. The brim is folded by picking up stitches from the cast-on edge, you can insert elastic if desired.

Increases are made, and the beret continues in stockinette stitch while adding pearls to the fabric with the help of a thin crochet hook. Simple decreases are worked until the beret is closed.

To finish, crochet strawberries are added in the spaces defined by the previously inserted pearls, and they are sewn on using green yarn to create the strawberry leaves.

YARN

Revesderecho Merino (100% Merino; sport weight; 174m / 190yds per 50g skein) 2 skeins or 348m / 380yds of sport weight yarn.

GAUGE

23 sts x 30 rounds = 10cm / 4", knitted in the round in stockinette stitch with 4mm / US 6 needles, measured **after** blocking

NEEDLES + HOOKS

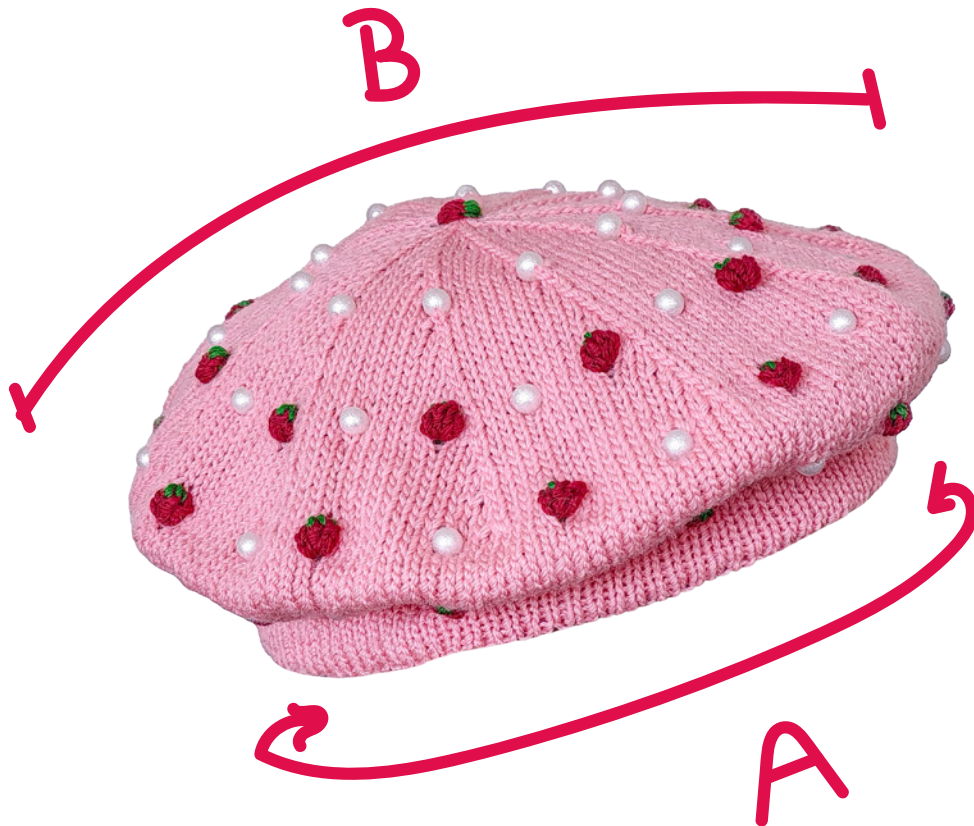
- 4mm / US 6 needles, 50cm / 20" and 80cm / 32" length.
- 3mm / US 2 ½ needles, 50cm / 20" length.
- 2.5mm crochet hook.
- 0.9mm crochet hook.

NOTIONS

Scrap yarn in red, green and a different color from main yarn, 36 (40, 44, 48) pearls or beads, 1 stitch marker, tapestry needle. *Optional: Up to 61 cm / 24" of 2.5cm / 1" wide flat sewing elastic.*

SIZES AND MEASUREMENTS

Size	1	2	3	4
Head circumference	39cm - 44cm 15 ³ / ₈ " - 17 ¹ / ₄ "	45cm - 50cm 17 ³ / ₄ " - 19 ³ / ₄ "	51cm - 56cm 20" - 22"	57cm - 62cm 22 ¹ / ₂ " - 24 ¹ / ₂ "
Finished brim circumference (A)	35cm / 13 ³ / ₄ "	41cm / 16 ¹ / ₄ "	47cm / 18 ¹ / ₂ "	53cm / 21"
Diameter (B)	20cm / 8"	23cm / 9"	26cm / 10 ¹ / ₄ "	29cm / 11 ¹ / ₂ "



Abbreviations

dec Decrease.

M Marker.

inc Increase.

p Purl.

k Knit.

st(s) Stitch(es).

kfb Knit front and back.

[] Repeat the instructions between brackets as many times as indicated.

k2tog Knit 2 together.

Glossary

Step-by-step videos

Find step-by-step videos for this pattern at the following link or scan the code:

https://youtube.com/playlist?list=PLKBGt1R3S9hkHfAvmsyrQPTlI5vytr7m_&si=sohTqcH1nzh4olPO

Insert Pearl

Place a pearl on your 0.9 mm crochet hook. Use the hook to pull the next stitch from your left needle through the pearl's hole. Return the stitch to your left needle and knit it.



Pattern begins

SECTION 1 - Brim

Using scrap yarn, 3mm / US 2 ½ needles and the long-tail cast on method, cast on 84 (96, 108, 120) sts.

Join in the round, being careful not to twist your stitches, and place M to indicate the beginning of each round.

Cut scrap yarn and change to main yarn.

Round 1: [K1, p1] to end.

Repeat Round 1 until your work measures 3cm / 1¼".

Change to 4mm / US 6 needles.

Work in stockinette stitch (knit to end) until your work measures 6.5cm / 2½" from the beginning. (3cm / 1¼" in ribbing and 3.5cm / 1⅜" in stockinette)

Fold your work bringing the ribbed section inside and leaving the stockinette section outside, you may add elastic inside as follows:

- Measure elastic to fit around head circumference.
- Subtract 2.5cm / 1".
- Sew elastic ends together being careful not to twist.
- Test that the elastic does not feel too tight around your head.
- Place the elastic in between the folded hem (stockinette stitch outside and ribbing inside).

Pick up stitches from where you casted on at the beginning to form a folded hem as follows: With your left needle pick up a stitch from the cast-on edge, knit this stitch, together with the next stitch already on your left needle.

Continue picking up stitches from the cast-on edge and repeat the previous steps until the end.



SECTION 2 - Base

Note: Switch to a longer cable as needed.

Round 1 (inc): [K1, kfb] to end. 126 (144, 162, 180) sts

Round 2: K to end.

Round 3 (inc):

- **Size 1:** [K6, kfb] to end. 144 sts
- **Size 2:** [K8, kfb] to end. 160 sts
- **Size 3:** [K10, kfb] to 8 sts before end, k8. 176 sts
- **Size 4:** [K14, kfb] to end. 192 sts

Rounds 4 - 10: K to end.

Round 11: [K3, insert pearl, k12] to end.

Rounds 12 - 22: K to end.

Round 23: [K11, insert pearl, k4] to end.

SECTION 3 - Decreases

Note: Switch to a short cable as needed; you may switch to double-pointed needles if desired

Round 1 (dec): [K14, k2tog] to end. 135 (150, 165, 180) sts

Rounds 2 - 3: K to end.

Round 4 (dec): [K13, k2tog] to end. 126 (140, 154, 168) sts

Rounds 5 - 6: K to end.

Round 7 (dec): [K12, k2tog] to end. 117 (130, 143, 156) sts

Rounds 8 - 9: K to end.

Round 10 (dec): [K11, k2tog] to end. 108 (120, 132, 144) sts

Round 11: K to end.

Round 12: [K3, insert pearl, k8] to end.

Round 13 (dec): [K10, k2tog] to end. 99 (110, 121, 132) sts

Rounds 14 - 15: K to end.

Round 16 (dec): [K9, k2tog] to end. 90 (100, 110, 120) sts

Rounds 17 - 18: K to end.

Round 19 (dec): [K8, k2tog] to end. 81 (90, 99, 108) sts

Rounds 20 - 21: K to end.

Round 22 (dec): [K7, k2tog] to end. 72 (80, 88, 96) sts

Round 23: K to end.

Round 24: [K7, insert pearl] to end.

Round 25 (dec): [K6, k2tog] to end. 63 (70, 77, 84) sts

Round 26 and all even rounds up to Round 38: K to end.

Round 27 (dec): [K5, k2tog] to end. 54 (60, 66, 72) sts

Round 29 (dec): [K4, k2tog] to end. 45 (50, 55, 60) sts

Round 31 (dec): [K3, k2tog] to end. 36 (40, 44, 48) sts

Round 33 (dec): [K2, k2tog] to end. 27 (30, 33, 36) sts

Round 35 (dec): [K1, k2tog] to end. 18 (20, 22, 24) sts

Round 37 (dec): k2tog to end. 9 (10, 11, 12) sts



FINISHING

Cut your yarn, thread the tail onto a tapestry needle and draw through the remaining stitches twice, pull tight to close..

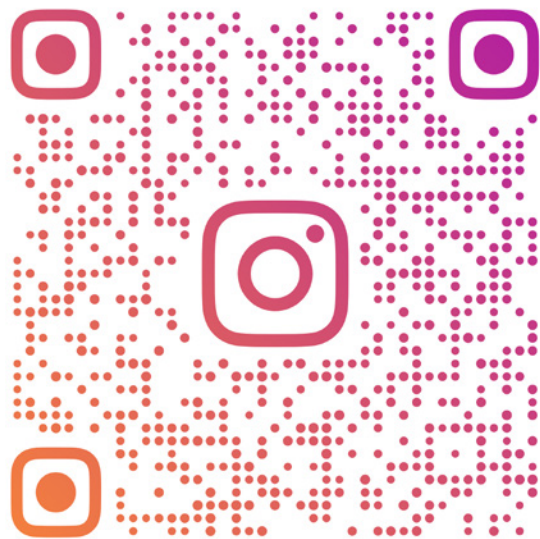
Block your beret and weave in all the ends.

If you wish, you can finish your beret by adding strawberries as follows:

Using your red yarn, insert your crochet hook 2 stitches below where you want the strawberry to be. Chain 3, followed by 3 half double crochets (hdc) without closing them. Close the 4 loops on your crochet hook, cut the yarn, and secure the last stitch.

Weave in the ends on the wrong side of the fabric.

With your green yarn and a tapestry needle, embroider 4 lines at the top of the strawberry to create the leaves, then weave in all ends.



FRANLOPEZKNITTING

Tag me and use #HachiBeret

Thank you for supporting my work
I hope you enjoy working this pattern



Fran López



contactofranlopezknitting
@gmail.com



My patterns on Ravelry



Support me on Patreon