

GREEN TALES



This pattern is property of Ruta Sabaliauskaite @rutahandmade and is for personal use only.

The pattern or parts of it may not be reproduced distributed or resold, translated, published, posted for sell or free on the internet or offline.

You can sell finished items from my patterns, but PLEASE clearly credit the design to Rutahandmade and provide a link to my Ravelry:

<https://www.ravelry.com/designers/ruta-sab>

Thank you for respect my work.

Size: finished scarf measures 180x30cm (not blocked), adjustable

Yarns : dropsdesign 'Flora', 3 skeins green color (150g,630m (each skein = 50g (1.8oz),210m (230yds), 1 skein white color (CC) 50g (1.8oz) 50m (230yds). If you need bigger scarf just add 1 more skein of each color.

Needles : 3.00 mm needles (i prefer circular needles)
Cable needle, tapestry needle

Gauge: 24sts/32 rows in 4x4" (10x10cm)

Abbreviations :

K - knit

KCC - knit with contrast color

P - purl

3LC - 3 stitches left cable

3RC - 3 stitches right cable

4LC - 4 stitches left cable

MC - main color yarn

CC - contrast color yarn

K with CC in front - knit with main color holding contrast color in front of work

P with CC in back - purl with main color holding contrast color in back of work

PM - place stitches marker

St / sts - stitches

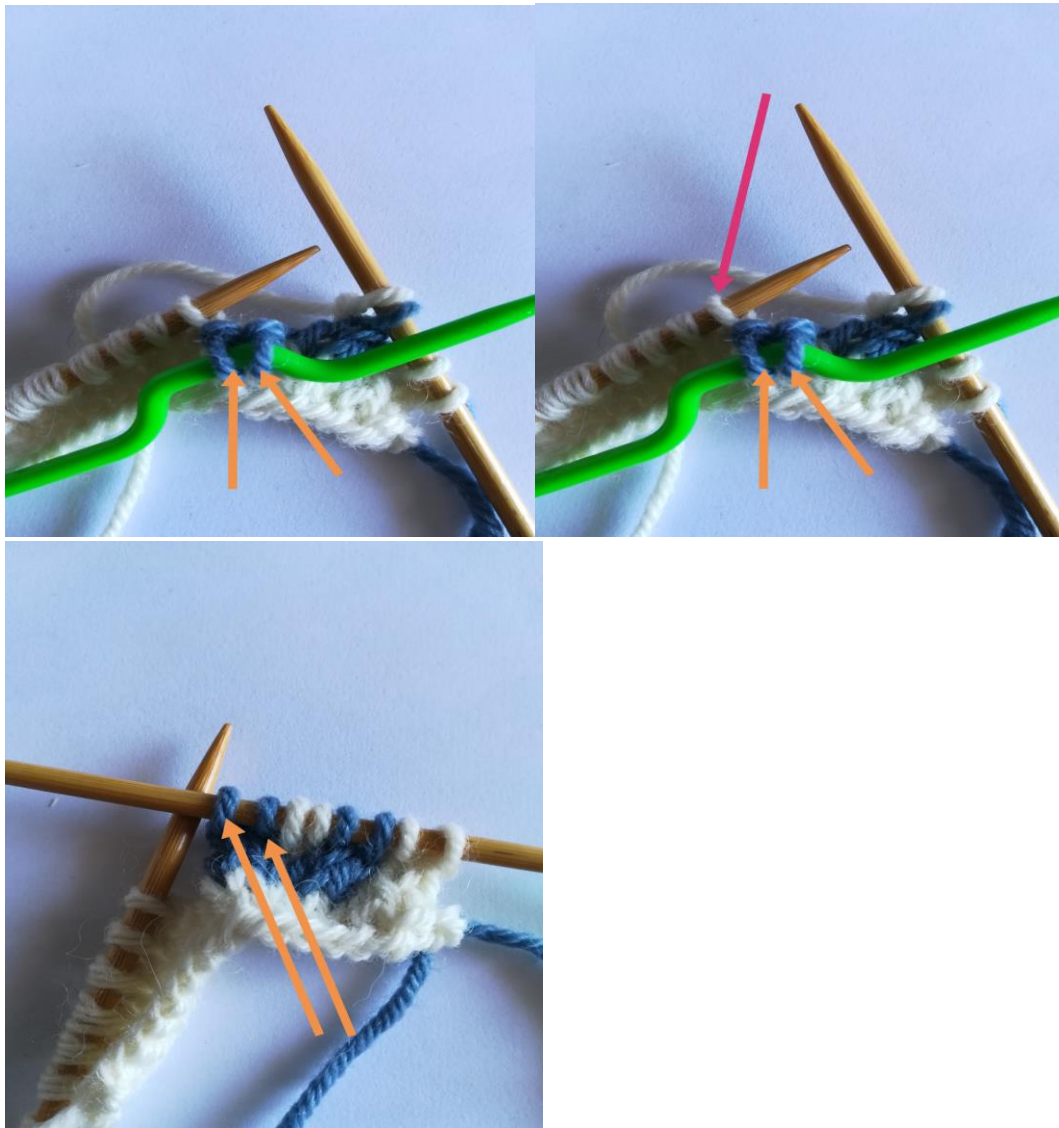
*, * - repeat

How to make a 4 stitches cables :

Put the first 2 for stitches on cable needle and hold it in front of work, knit last 2 stitches, knit 2 stitches from cable needle

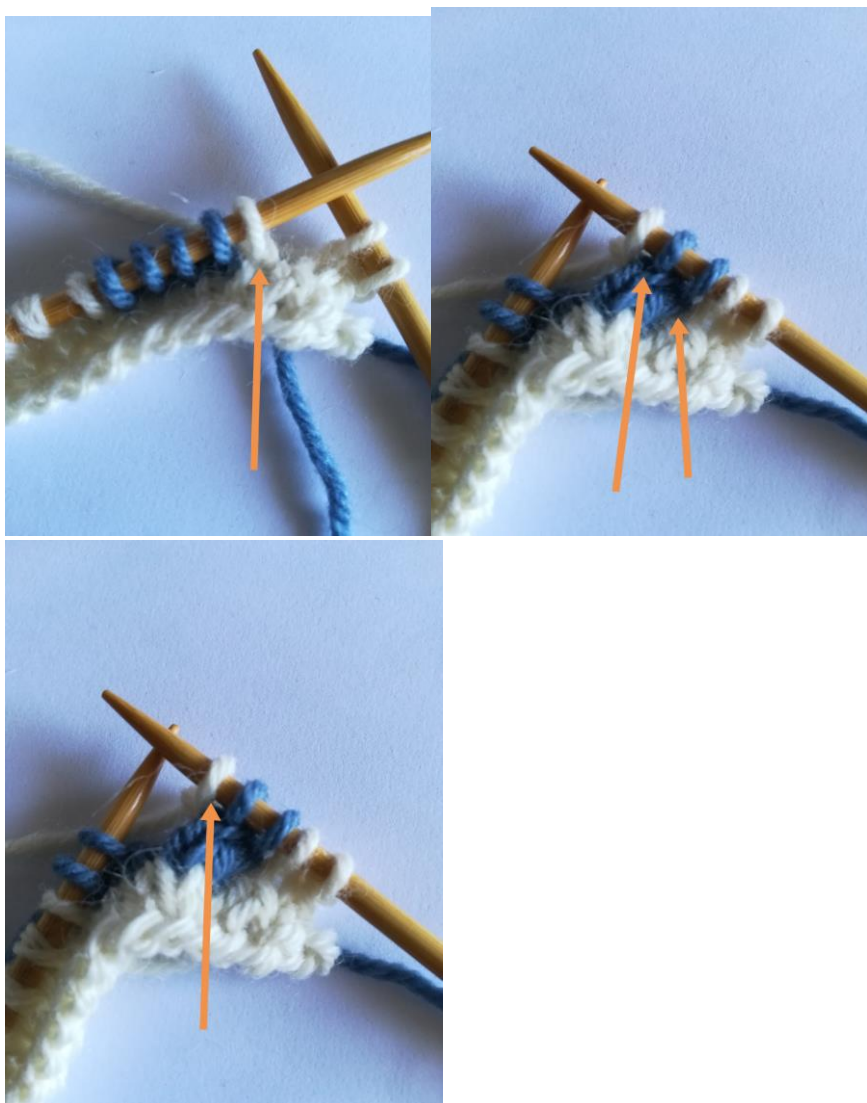
How to make a 3 stitches left cables (2 colors) :

Put first 2 stitches (CC) on cable needle and hold it in front of work, knit last (MC) stitch with MC yarn, knit 2 stitches from cable needle with CC yarn.



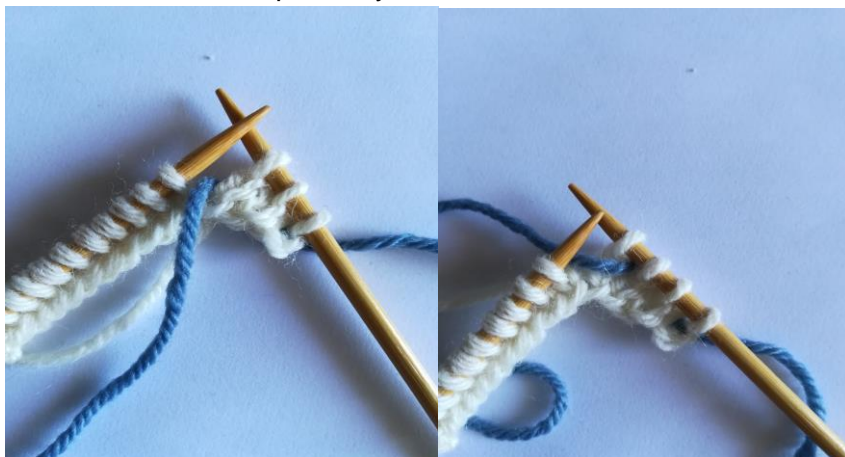
How to make a 3 stitches right cables (2 colors):

Put first stitch (MC) on cable needle and hold it in the back of work, knit 2 stitches (CC) with CC yarn, knit (MC) 1 stitch from cable needle with MC yarn.



How to K with CC in front:

Before knit with MC, put CC yarn in front of work, K with MC, return CC in back of wor



How to P with CC in back:

Before purl with MC, put CC yarn in back of work, P with MC, return CC in front of work

Instructions:

Scarf is worked in one piece, with 2 motives

A 30cm	B 120cm	A 30cm
-----------	------------	-----------



Part A :



Part B:

Cast on 80 sts

Knit first 2 rows (K all sts on RS and WS).

Cables with Fairisle

Multiple of 12 sts

All cables are worked with CC yarns!

Always K first and last sts.

First part (A)

3 row: k1, p1, k1, p1, k2CC, *k1, k1 with CC in front, k1, k2 with CC in front, k1, k1 with CC in front, k1, k4CC * x5, k1, k1 with CC in front, k1, k2 with CC in front, k1, k1 with CC in front, k1, k2CC, p1, k1, p1, k1;

4 row: k2, p1, k1, p2CC, *p1, p1 with CC in back, p1, p2 with CC in back, p1, p1 with CC in back, p1, p4CC * x5, p1, p1 with CC in back, p1, p2 with CC in back, p1, p1 with CC in back, p1, p2CC, k1, p1, k2;

5 row: k1, p1, k1, p1, k2CC, *k1, k1 with CC in front, k1, k2 with CC in front, k1, k1 with CC in front, k1, 4LC (CC) * x5, k1, k1 with CC in front, k1, k2 with CC in front, k1, k1 with CC in front, k1, k2CC, p1, k1, p1, k1;

6 row: k2, p1, k1, p2CC, *p1, p1 with CC in back, p1, p2 with CC in back, p1, p1 with CC in back, p1, p4CC * x5, p1, p1 with CC in back, p1, p2 with CC in back, p1, p1 with CC in back, p1, p2CC, k1, p1, k2;

7 row : k1, p1, k1, p1, *3LC, k1, k1 with CC in front, k2, k1 with CC in front, k1, 3RC* x6, p1, k1, p1, k2;

8 row: k2, p1, k1, *p1, p2CC, p1, p1 with CC in back, p2, p1 with CC in back, p1, p2CC, p1* x6, k1, p1, k2;

9 row: k1, p1, k1, p1, k1 with CC in front, *3LC, k1, k2 with CC in front, k1, 3RC, k2 with CC in front* x5, 3LC, k1, k2 with CC in front, k1, 3RC, k1 with CC in front, p1, k1, p1, k1;

10 row: k2, p1, k1, p1 with CC in back, *p1, p2CC, p1, p2 with CC in back, p1, p2CC, p1, p2 with CC in back* x5, p1, p2CC, p1, p2 with CC in back, p1, p2CC, p1, p1 with CC in back, k1, p1, k2;

11 row: k1, p1, k1, p1, *k1, k1 with CC in front, 3LC, k2, 3RC, k1 with CC in front, k1* x6, p1, k1, p1, k1;

12 row: k2, p1, k1, *p1, p1 with CC in back, p1, p2CC, p2, p2CC, p1, p1 with CC in back, p1* x6, k1, p1, k2;

13 row: k1, p1, k1, p1, k1 with CC in front, *k1, k1 with CC in front, 3LC, 3RC, k1 with CC in front, k1, k2 with CC in front* x5, k1, k1 with CC in front, 3LC, 3RC, k1 with CC in front, k1, k1 with CC in front, p1, k1, p1, k1;

14 row: k2, p1, k1, p1 with CC in back, *p1, p1 with CC in back, p1, p4CC, p1, p1 with CC in back, p1, p2 with CC in back* x5, p1, p1 with CC in back, p1, p4CC, p1, p1 with CC in back, p1, p1 with CC in back, k1, p1, k2;

15 row: k1, p1, k1, p1, k1 with CC in front, *k1, k1 with CC in front, k1, 4LC (CC), k1, k1 with CC in front, k1, k2 with CC in front* x5, k1, k1 with CC in front, k1, 4LC (CC), k1, k1 with CC in front, k1, k1 with CC in front, p1, k1, p1, k1;

16 row: k2, p1, k1, p1 with CC in back, *p1, p1 with CC in back, p1, p4CC, p1, p1 with CC in back, p1, p2 with CC in back* x5, p1, p1 with CC in back, p1, p4CC, p1, p1 with CC in back, p1, p1 with CC in back, k1, p1, k2;

17 row: k1, p1, k1, p1,* k1, k1 with CC in front, k1, 3RC, 3LC, k1, k1 with CC in front, k1* x6, p1, k1, p1, k1;

18 row: k2, p1, k1, *p1, p1 with CC in back, p1, p2CC, p2, p2CC, p1, p1 with CC in back, p1* x6, k1, p1, k2;

19 row: k1, p1, k1, p1, k1 with CC in front, *k1, 3RC, k2 with CC in front, 3LC, k1, k2 with CC in front* x5, k1, 3RC, k2 with CC in front, 3LC, k1, k1 with CC in front, p1, k1, p1, k1;

20 row: k2, p1, k1, p1 with CC in back, *p1, p2CC, p1, p2 with CC in back, p1, p2CC, p1, p2 with CC in back* x5, p1, p2CC, p1, p2 with CC in back, p1, p2CC, p1, p1 with CC in back, k1, p1, k2;

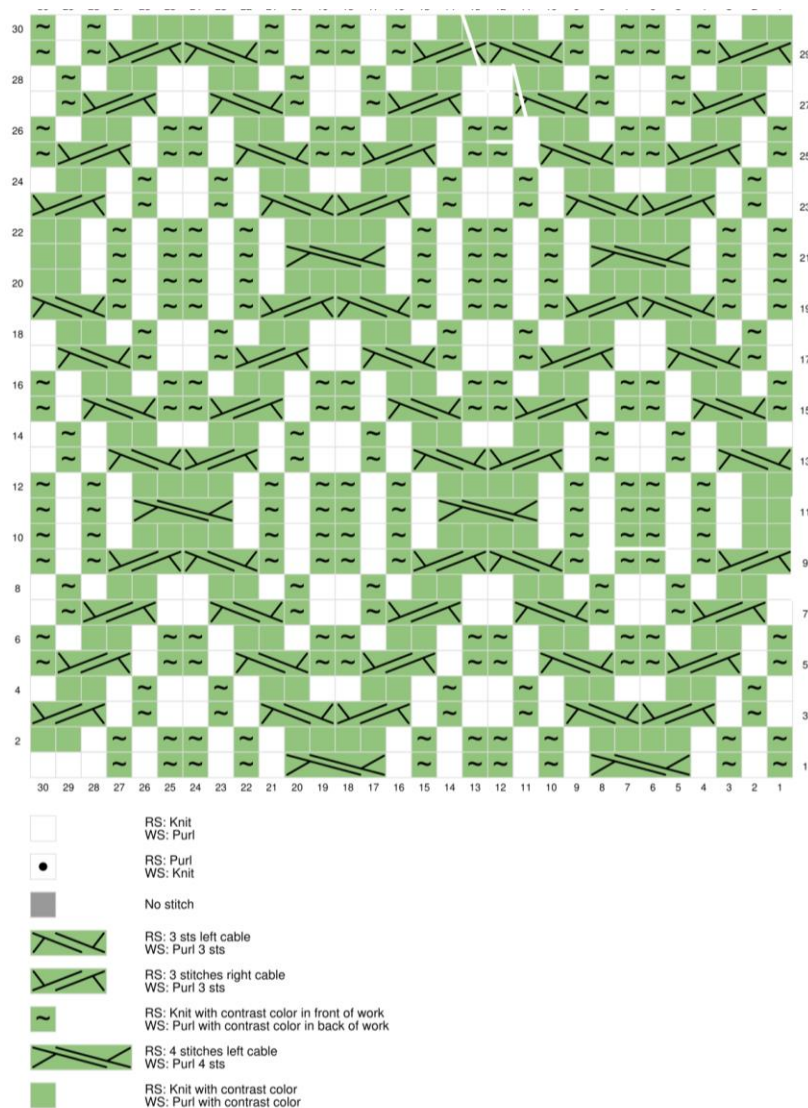
21 row: k1, p1, k1, p1, *k1, 3RC, k1 with CC in front, k2, k1 with CC in front, 3LC,k1* x6, p1, k1, p1, k1;

22 row: k2, p1, k1, *p1, p2CC, p1, p1 with CC in back, p2, p1 with CC in back, p1, p2CC, p1* x6, k1, p1, k2;

23 row: k1, p1, k1, p1, *3RC, k1 with CC in front, k1, k2 with CC in front, k1, k1 with CC in front, 3LC* x6, p1, k1, p1, k1;

24 row: k2, p1, k1, *p2CC, p1, p1 with CC in back, p1, p2 with CC in back, p1, p1 with CC in back, p1, p2CC*, k1, p1, k2.

Repeat rows 5 - 24 x4 times (about 30cm).



Second part (B) :

1 row: k1, p1, k1, p1, k2CC, *k1, k1 with CC in front, k1, k2 with CC in front, k1, k1 with CC in front, k1, 4LC (CC) * x5, k1, k1 with CC in front, k1, k2 with CC in front, k1, k1 with CC in front, k1, k2CC, p1, k1, p1, k1;

2 row: k2, p1, k1, p2CC, *p1, p1 with CC in back, p1, p2 with CC in back, p1, p1 with CC in back, p1, p4CC * x5, p1, p1 with CC in back, p1, p2 with CC in back, p1, p1 with CC in back, p1, p2CC, k1, p1, k2;

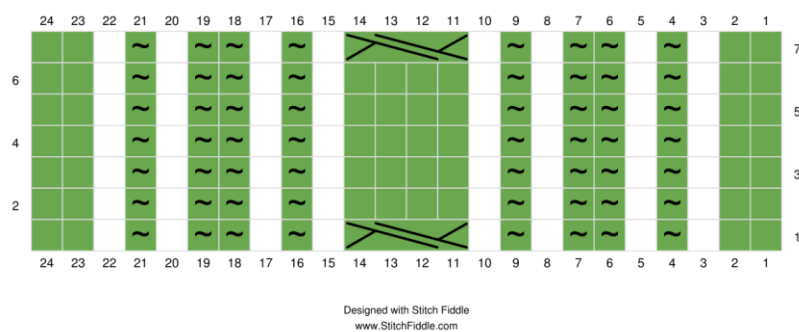
3 row: k1, p1, k1, p1, k2CC, *k1, k1 with CC in front, k1, k2 with CC in front, k1, k1 with CC in front, k1, k4CC * x5, k1, k1 with CC in front, k1, k2 with CC in front, k1, k1 with CC in front, k1, k2CC, p1, k1, p1, k1;

4 row: k2, p1, k1, p2CC, *p1, p1 with CC in back, p1, p2 with CC in back, p1, p1 with CC in back, p1, p4CC * x5, p1, p1 with CC in back, p1, p2 with CC in back, p1, p1 with CC in back, p1, p2CC, k1, p1, k2;

5 row: k1, p1, k1, p1, k2CC, *k1, k1 with CC in front, k1, k2 with CC in front, k1, k1 with CC in front, k1, k4CC * x5, k1, k1 with CC in front, k1, k2 with CC in front, k1, k1 with CC in front, k1, k2CC, p1, k1, p1, k1;

6 row: k2, p1, k1, p2CC, *p1, p1 with CC in back, p1, p2 with CC in back, p1, p1 with CC in back, p1, p4CC * x5, p1, p1 with CC in back, p1, p2 with CC in back, p1, p1 with CC in back, p1, p2CC, k1, p1, k2;

Continue repeating rows 1-6 for 120 cm



3° part (A)

When scarf measures 150cm repeat 5 - 24 rows (part A) x 4times.

Knit last 2 rows (K all sts) with MC.

Bindoff

Weave the ends

Enjoy!

Happy knitting 😊

For any questions just e-mail rutahandmade@gmail.com

If you want just tag me @rutahandmade on Instagram and i will share your works.

