



Grandma

Junko Okamoto

YARN

Moeke yarns Elena
For the Moeke yarns home page
see <http://moeke-yarns.com>

Approximately
Main Color (MC) : 200g
Contrast Color (CC) : 50g

NEEDLES

40" or longer circular needles
US 4 (3.50mm)

PATTERN NOTES

This shawl uses the Entrelac
method.

GAUGE

One piece (4 sts × 7 rows) =
approximately
1.6 cm × 2.3 cm / 0.6" × 0.9"
with US 4 (3.50mm) needle

STANDARD

ABBREVIATIONS

CO : cast on
Circ : circular
k : knit
k2tog : knit two together
P/U : Pick Up
p : purl
rep : repeat
ssk : slip 2 sts knitwise one at
time, then knit those 2 sts
together through back loop
ssp : slip 2 sts knitwise one at
time, then purl those 2 sts
together through back loop
s2kp : slip 2 sts as if to K2tog, k1,
pass 2 slipped sts over the
k st

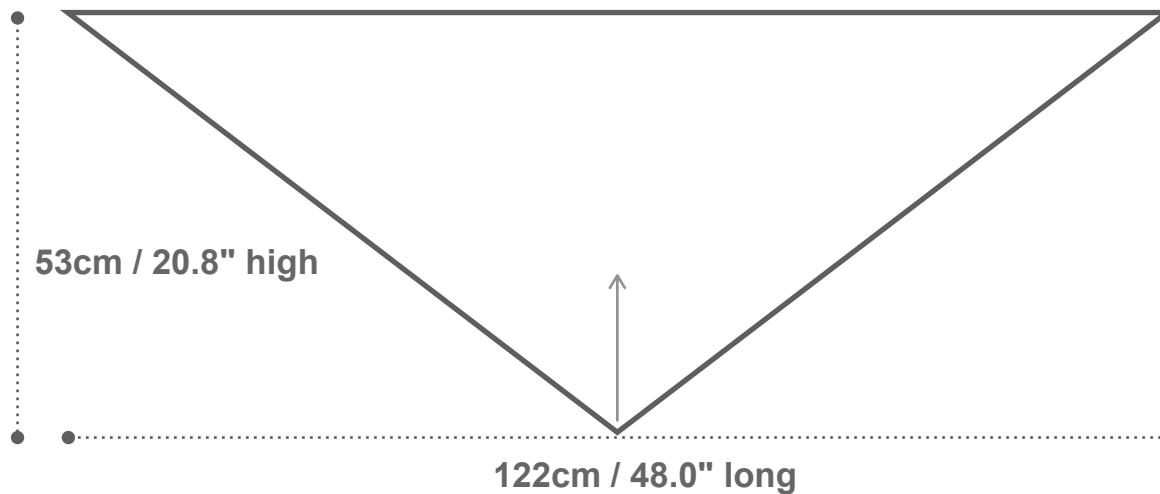
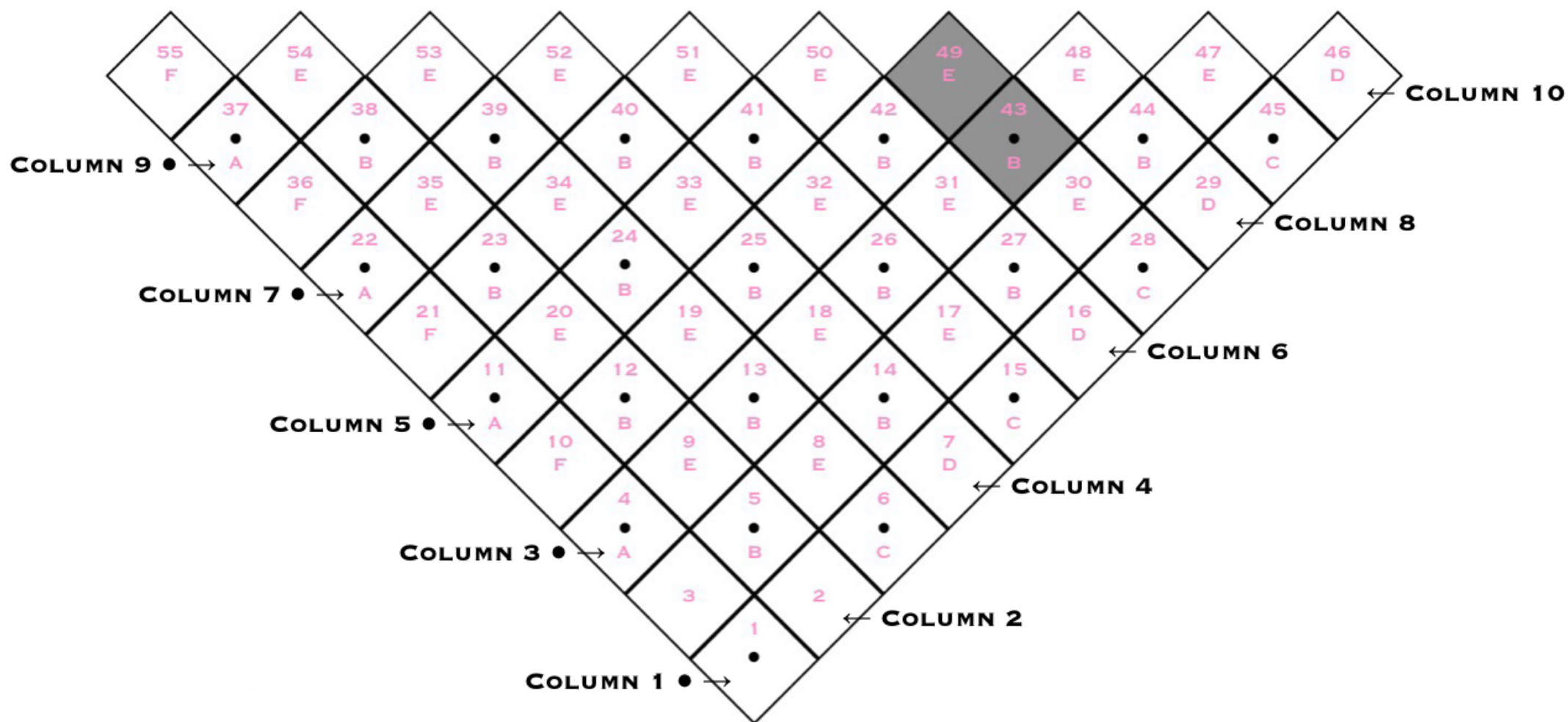


CHART 1

<div></div> MC / even	<div>•</div> MC / odd	<div></div> CC / even	<div>•</div> CC / odd
-----------------------	-----------------------	-----------------------	-----------------------



SECTION 1

COLUMN 1 AND 2

For video tutorial see, <https://youtu.be/WrSAkIZDy5E>

PIECE 1

Using Purled Cast On method,
CO 4sts with MC.

Row 1 (WS)

p4, turn.

Row 2 (RS)

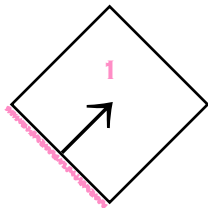
k4, turn.

Row 3 to 6

Row 1 and 2 rep 2 more times.

Row 7 (WS)

p4, turn.



PIECE 2

RS facing.

Insert the right hand needle into the first stitch.

Using Knitted Cast On method,
CO 4sts.

Will connect to the lower column's piece.

Row 1 (RS)

k3, ssk, turn.

Row 2 (WS)

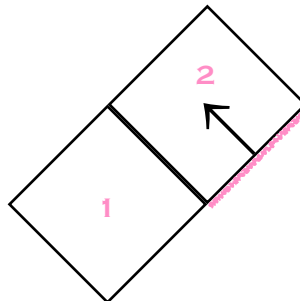
sl 1wyif, p3, turn.

Row 3 to 6

Row 1 and 2 rep 2 more times.

Row 7 (RS)

k3, ssk, Do not turn.



PIECE 3

RS facing.

Row 1 (RS)

Pick up and knit 4sts from from the edge of just connected lower column's piece, turn.

Row 2 (WS)

p4, turn.

Row 3 (RS)

k4, turn.

Row 4 (WS)

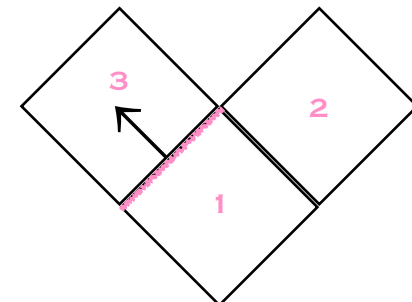
p4, turn.

Row 5 and 6

Row 3 and 4 rep 1 more time.

Row 7 (RS)

k4, turn.



SECTION 2

COLUMN 3 (● ODD NUMBER COLUMN) REFERRING TO CHART 1

PIECE 4 / TIPE A

For video tutorial see,
<https://youtu.be/MQVRmVijxXk>

WS facing.

Insert the right hand needle into the first stitch.

Using Purled Cast On method,
CO 4sts.

Will connect to the last piece of lower column.

Row 1 (WS)

p3, p2tog, turn.

Row 2 (RS)

sl 1wyib, k3, turn.

Row 3 to 6

Row 1 and 2 rep 2 more times.

Row 7 (WS)

p3, p2tog, Do not turn.

PIECE 5 / TIPE B

For video tutorial see,
<https://youtu.be/YYgHI4DB4nI>

WS facing.

Row 1 (WS)

Pick up and purl 4sts from the edge of just connected lower column's piece.

Transfer the last picked stitch to the right hand needle, then p2tog, turn.

Row 2 (RS)

sl 1wyib, k3, turn.

Row 3 (WS)

p3, p2tog, turn.

Row 4 (RS)

sl 1wyib, k3, turn.

Row 5 and 6

Row 3 and 4 rep 1 more time.

Row 7 (WS)

p3, p2tog, Do not turn.

PIECE 6 / TIPE C

For video tutorial see,
https://youtu.be/Yzhg8Wjic_M

WS facing.

Row 1 (WS)

Pick up and purl 4sts from the edge of just connected lower column's piece, turn.

Row 2 (RS)

k4, turn.

Row 3 (WS)

p4, turn.

Row 4 (RS)

k4, turn.

Row 5 and 6

Row 3 and 4 rep 1 more time.

Row 7 (WS)

p4, turn.

SECTION 3

COLUMN 4 (EVEN NUMBER COLUMN) REFERRING TO CHART 1

PIECE 7 / TIPE D

For video tutorial see,
<https://youtu.be/UJm5EvMFQes>

RS facing.

Insert the right hand needle into the first stitch.

Using Knitted Cast On method,
CO 4sts.

Will connect to the last piece of lower column.

Row 1 (RS)

k3, ssk, turn.

Row 2 (WS)

sl 1wyif, p3, turn.

Row 3 to 6

Row 1 and 2 rep 2 more times.

Row 7 (RS)

k3, ssk, Do not turn.

PIECE 8 AND 9 / TIPE E

For video tutorial see,
<https://youtu.be/HgE3r-E87FA>

RS facing.

Row 1 (RS)

Pick up and knit 4sts from the edge of just connected lower column's piece.

Transfer the last picked stitch to the right hand needle, then ssk, turn.

Row 2 (WS)

sl 1wyif, p3, turn.

Row 3 (RS)

k3, ssk, turn.

Row 4 (WS)

sl 1wyif, p3, turn.

Row 5 and 6

Row 3 and 4 rep 1 more time.

Row 7 (RS)

k3, ssk, Do not turn.

PIECE 10 / TIPE F

For video tutorial see,
<https://youtu.be/M79ckL132Tg>

RS facing.

Row 1 (RS)

Pick up and knit 4sts from from the edge of just connected lower column's piece, turn.

Row 2 (WS)

p4, turn.

Row 3 (RS)

k4, turn.

Row 4 (WS)

p4, turn.

Row 5 and 6

Row 3 and 4 rep 1 more time.

Row 7 (RS)

k4, turn.

SECTION 4

COLUMN 5 TO 10

Just like Section 2 and 3, complete column 5 to 10 while referring to Chart 1. Also, piece 43 and 49 knitted with CC.

COLUMN 5 AND ALL ● ODD NUMBER COLUMN

First piece / Tipe A

All middle pieces / Tipe B

Last piece / Tipe C

COLUMN 6 AND ALL EVEN NUMBER COLUMN

First piece / Tipe D

All middle pieces / Tipe E

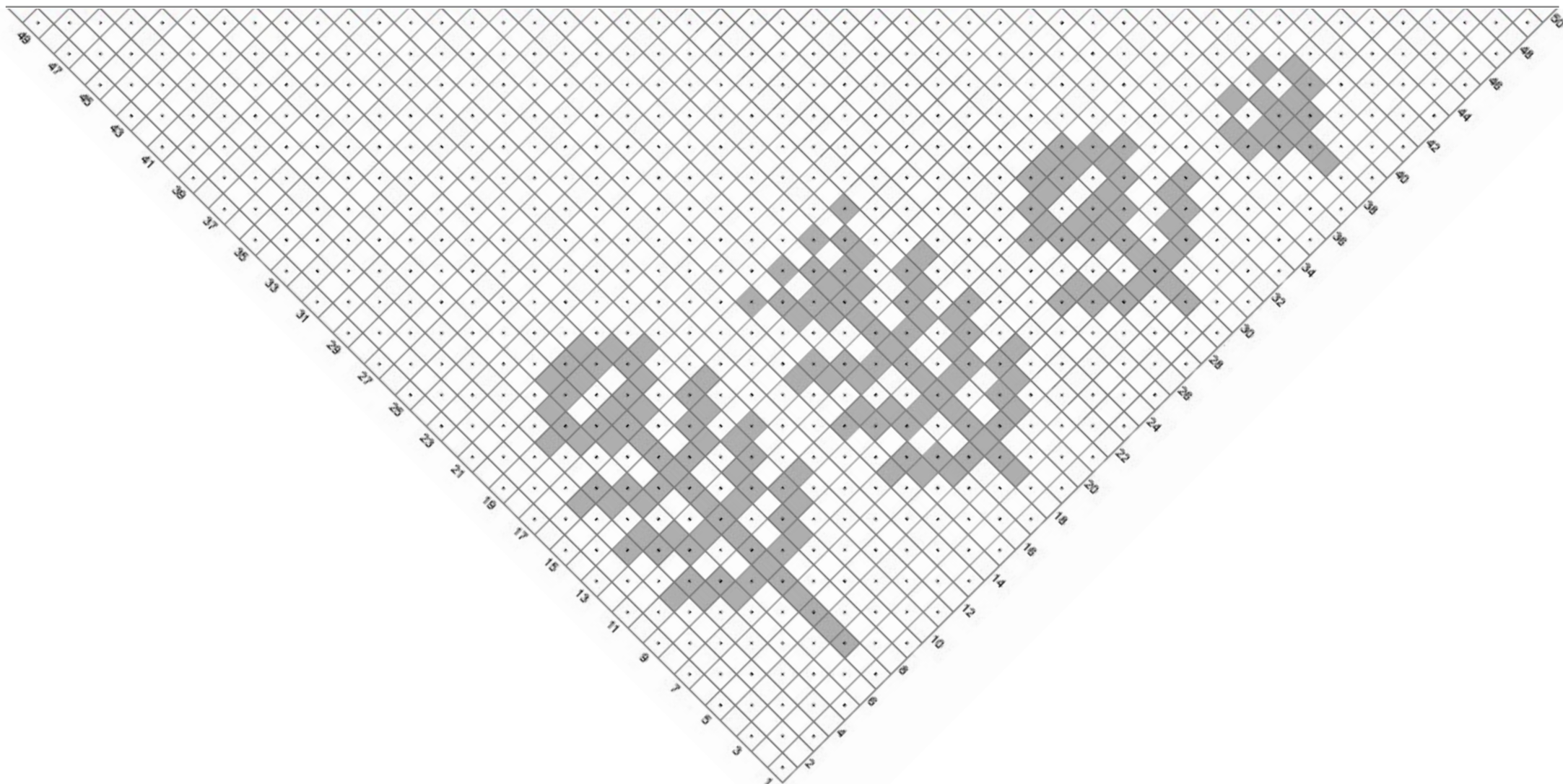
Last piece / Tipe F

SECTION 5

COLUMN 11 TO 49

Just like Section 4, complete column 11 to 49 while referring to Chart 2. Also, carefully check the CC position.

CHART 2



SECTION 6

COLUMN 50

FIRST PIECE

For video tutorial see,
<https://youtu.be/PU0od1dk4rQ>

RS facing. Insert the right hand needle into the first stitch.
Using Knitted Cast On method,
CO 4sts with MC.
Will connect to the last piece of lower column.

Row 1 (RS)

k3, ssk, turn.

Row 2 (WS)

sl 1wyif, p3, turn.

Row 3 (RS)

k2, s2kp, turn.

Row 4 (WS)

sl 1wyif, p2, turn.

Row 5 (RS)

k1, s2kp, turn.

Row 6 (WS)

sl 1wyif, p1, turn.

Row 7 (RS)

s2kp, Do not turn.

MIDDLE PIECE

For video tutorial see,
<https://youtu.be/5BANFA2Qebg>

RS facing.

Row 1 (RS)

Pick up and knit **3sts** from the edge of just connected lower column's piece.

Transfer the last picked stitch to the right hand needle, then ssk, turn.

Row 2 (WS)

sl 1wyif, p3, turn.

Row 3 (RS)

k2, s2kp, turn.

Row 4 (WS)

sl 1wyif, p2, turn.

Row 5 (RS)

k1, s2kp, turn.

Row 6 (WS)

sl 1wyif, p1, turn.

Row 7 (RS)

s2kp, Do not turn.

LAST PIECE

For video tutorial see,
https://youtu.be/x3bwye7_qJU

RS facing.

Row 1 (RS)

Pick up and knit **3sts** from the edge of just connected lower column's piece, turn.

Row 2 (WS)

p4, turn.

Row 3 (RS)

k2, ssk, turn.

Row 4 (WS)

p3, turn.

Row 5 (RS)

s2kp.

Break yarn and pull through the last stitch.

Thank you so much!

Special Thanks
Isabel, Juliette, and Moeke yarns Ioana!

