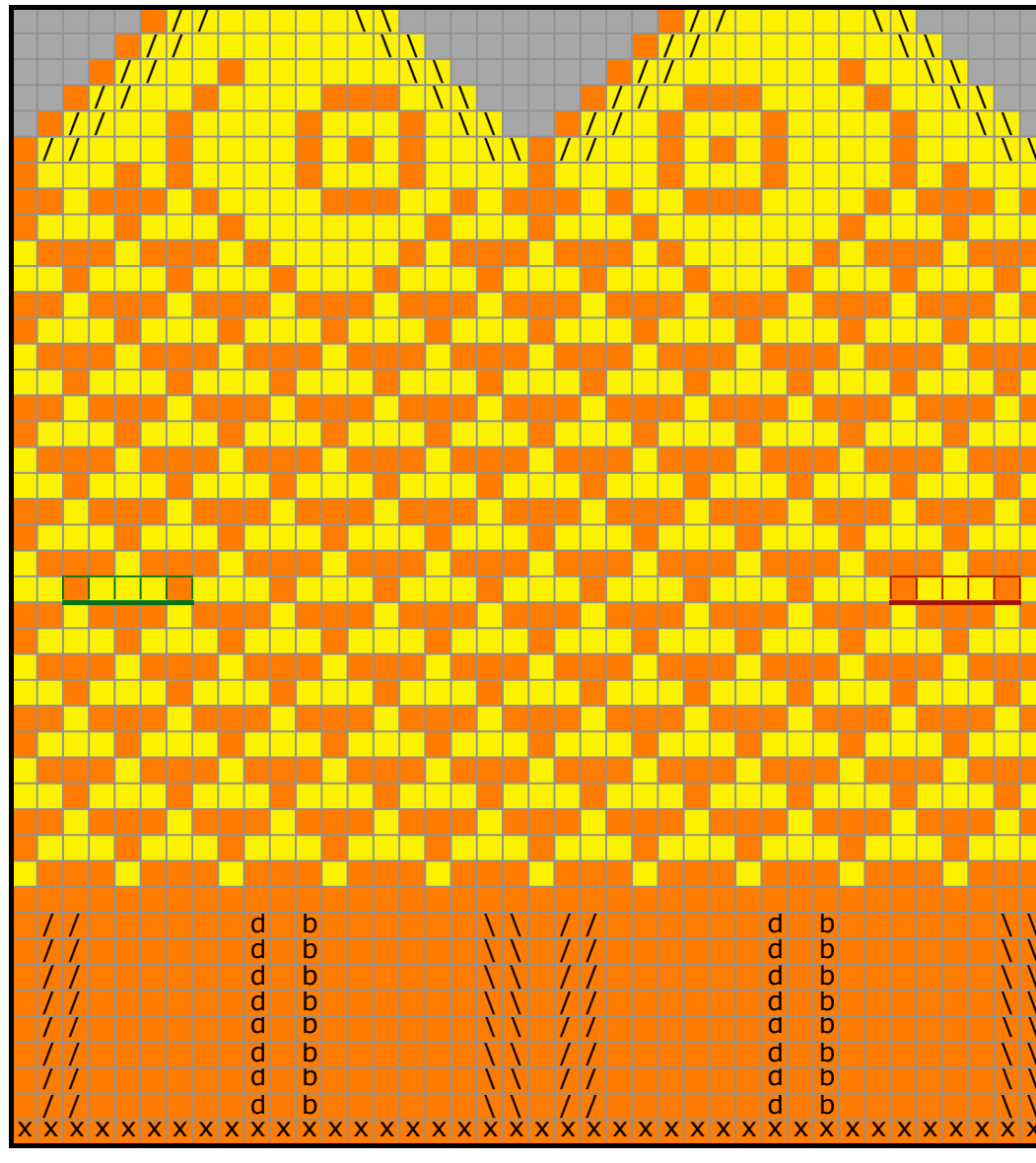


GoldFish Mittens For a Toddler



You will need- 1 skein each *Dale of Norway Helio* or *Faulk* in shades 3418 (MC) 2427 (CC), 2 circular or 5 dpn needles size 3. Waste yarn, a tapestry needle, a crochet hook (optional).

CO 40 sts, divide evenly over 2 circular or 4 Dpn. Work rows 1-45 of chart. When you get to the red/green line drawn into the chart for thumb placement, knit the 5 sts with scrap yarn, then slide those stitches back onto the left needle and knit them again in pattern.

When charted rows are complete graft remaining 16 sts together using MC threaded onto a tapestry needle. Repeat for 2nd Mitten.

Thumb: Unpick the waste yarn placing live sts onto 2 or 3 needles. Knit, picking up 1 st each side of the gap (12 sts) with MC for 12 rnds. Dec rnd 1 *ssk, k2* repeat, Dec rnd 2 *ssk, k1* repeat. Dec rnd 3-*22k* repeat- 3 sts rem. Pull yarn through sts.

Weave in all ends. Crochet a chain approx. 36" with MC and CC held together and sew to tail fin if desired.

Wash and block.

Key:

■	no stitch
■	k, cc
■	k, mc
//	k2tog
\\	ssk
b	m1 right
d	m1 left
—	right thumb
—	left thumb
x	purl on rs