

Glacia Mittens



Fancy mittens with a Latvian Braid. Knitted from charts using only 2 color strands at a time. The palm and back of mitten are the same thus there is no designated left or right. Just make 2 mittens and you have a pair!

Sizing

One size. Fits a medium sized hand. Finished measurements: 10 ½ inches from cuff to fingertips. Laying flat they measure 3 ½ inches across knuckles.

Materials

All yarns are Knit Pick Palette 100% wool fingering weight

Finnley Heather (MC) 105 yds

Bluenote Heather 25 yds

Sky 11 yds

Calypso Heather 30 yds

Sagebrush 25 yds

Tidepool Heather 41 yds

Needles/Gauge

Size 1 dpns, Size 2 dpns

Gauge with Size 2 needle is: 7 sts per inch in the round in pattern.

Other Supplies

Yarn needle. Stitch markers. Scrap yarn.

Instructions

Cuff: using MC and Size 1 needles, C.O. 56 sts, PM, and join in the round. Work a 2X2 ribbing as such: Row 1: k2, p2 repeat to end of round. Repeat this row until the cuff measures 2 ½ inches.

Lativan Braid: Color A is Bluenote Heather, Color B is Sky

Row 1: (k 1 ColorA, k 1 ColorB) repeat to end of round.

Row 2: Move both strands to the front of the work. (All sts in rows 2 and 3 are purled over the same color as the previous row.) Starting with Color A, pull the yarn up and purl. Now using Color B, bring under the last st and purl. Alternate these two sts for the row. Your yarn will twist up. Do not try to untwist because it will naturally do so on the next row.

Row 3: Work the 1st st by pulling Color A *under* the last st and purl. (This is the only one in this row that is pulled from under the other.) Then work the next st in Color B, pull the yarn *OVER* the last st and purl. The 3rd st is also worked by pulling *OVER* the last st and purl.

Continue bringing each yarn over the last and purl to the end of the row. Your yarn will untwist as you do this row. Pull the yarns to the back at the end of the row. (You will weave them in later.)

Switch to Size 2 needles, knit one row plain adding 2 sts as such: k1, M1, 28, M1, k27. (58 sts) Note about M1: If you make a stitch by picking up from the row below, it will show on your work. When making new stitches after the Latvian Braid, knit a stitch, slip it back to the left needle, knit into that stitch then slip the slipped stitch back to the right needle.

Now you will work the charts in this order: Chart A, then Chart B, then Chart A again. To do this, start on line 1 of Chart A and knit 29 sts, PM. Knit line 1 of Chart B, PM. Knit line 1 of Chart A one more time. Continue on to line 2 of the charts working in this order until you reach line 19.

A note about knitting the gusset: notice that the increases are made on the odd lines. On line 1 you have 1 stitch of the gusset, on line 3 there are 3 stitches, on line 5 there are 5 stitches, and so on.

After 19 rows of working all charts put 19 sts of the thumb gusset on scrap yarn, and continue with Chart A only, knitting in twice per round. Once you are done with the charts, put the first 5 sts on one needle and the second 5 sts on a second needle and work these off with a kitchener stitch.

Thumb: place the 19 sts on size 2 dpns. Working from Chart B, start on line 20. Pick up 2 stitches from the body of the mitten as marked on the chart. These new stitches line up with the 2 dark stitches that look like a “seam” between the front and the back of the mitten. Once you have worked line 20 you will have 21 sts on your needles. Work in the round until the end of the chart and then knit one more round plain with MC. To close the thumb, use MC and k2tog all around until the last 3 sts in which you will K3tog. With the last 10 sts, pull the yarn through with a yarn needle, tie off and pull yarn to inside of thumb.

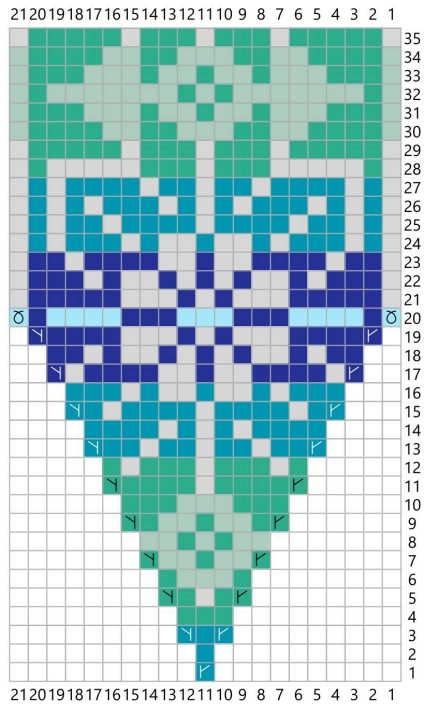
Make second mitten same as the first.

Weave in all ends and block.

Chart A - Glacia Mittens



Chart B - Gusset/Thumb - Glacia Mittens



Key

-  Finnley Heather
-  Bluenote Heather
-  Sky
-  Calypso Heather
-  Tidepool Heather
-  Sagebrush
-  No Stitch
-  Pick Up St
-  m1 right leaning
-  m1 left leaning
-  ssk
-  k2tog