

GINGERBREAD HOUSE MITTENS



BY ALEX MITCHELL

THESE FESTIVE MITTENS ARE WORKED FROM THE CUFF UP IN STRANDED COLORWORK AND FEATURE A CUTE SNOWY GINGERBREAD HOUSE DESIGN.



ABBREVIATIONS

BOR - Beginning of Round
CO - Cast On
st(s) - stitch(es)
rd(s) - round(s)
k - knit stitch
p - purl stitch
st st - Stockinette stitch
k2tog - knit two together
Ssk - slip slip knit
Cdd - Central double decrease
M1R - Make one right
M1L - Make one left

MATERIALS

Yarn - Fingering/4ply weight yarn in two contrasting colours for the background colour and main colour. I've used malabrigo ultimate sock superwash merino yarns for the example in this pattern in the colours

natural and caramel.

Yarn amounts - Background colour - 50g, main colour - 25g,

Needles - Circular needles in size US 1.5 (2.5mm) and US 2.5 (3mm) or size needed to obtain gauge.

Tools - 3 stitch markers, 1 stitch holder and a tapestry needle.

GAUGE

32 sts x 33 rds for 4" (10cm) in st st stranded colourwork on US 2.5 (3mm) needles after blocking

SIZING

These mittens are one size designed to fit a hand measuring 7" (18cm) in length and 9.5" (24cm) circumference at the widest part of the palm with up to 1" negative ease. If you need to make adjustments to the size you can use larger or smaller needles for a better fit.



TIPS FOR STRANDED COLOURWORK

Tension for Stranded Colourwork - Pay careful attention to your knitting tension as you may need to adjust to a looser knitting tension to prevent your floats from becoming too tight which will make your work bunch together and lose its stretch. Keep the stitches on the right-hand needle spread out as you knit.

Yarn domination - When knitting stranded colorwork, hold the main color to the left and the background color to the right for optimal color dominance.

Catching floats - For better tension, you can catch the floats when working five stitches or more in a row in the same color.

INSTRUCTIONS

Mitten

CO 52 sts on the smaller needles in white. Place a stitch marker at BOR. You can use double pointed needles with the sts divided equally across 4 needles or on circular needles in a magic loop. Work a rib K2 P2 for 15 rounds or longer if you like.

Switch to larger needles and knit 2 rounds in white. At the same time, increase 10 sts evenly in the 1st round.

Join the brown yarn and begin to work Chart A.

When you have worked as far as the black squares in the diagram, begin to work Chart C over these 3 stitches (place stitch markers on either side of Chart C if you need to).

Continue working according to Charts A and C (M1L and M1R in Chart C to make the increases). When you reach round 18 of Chart C place the increased stitches from Chart C on a stitch holder.

On the next round cast on 3 stitches behind the stitches on the holder. You should now have 62 stitches on the round.

Continue working Chart A over all stitches. When the diagram has been completed there are 4 stitches left on the round. Cut the strand, tack it through the stitches using a tapestry needle and fasten well.

Thumb

Place the 11 stitches from the stitch holder on double pointed needles size US 2.5 (3 mm) and start the round by picking up 11 stitches at the back of the thumb (pick up 3 stitches on each side and 5 stitches in the 3 cast-on stitches) you should have 24 sts. Work Chart C. When the diagram has been completed there are 4 stitches left on the round. Cut the strand, tack it through the stitches and fasten well.

Weave in the ends and block your mitten.

Repeat for the left mitten using Chart B where the thumb placement is on the opposite side.



CHART A: RIGHT MITTEN

- White
- Caramel
- No stitch
- k2tog
- ssk
- Centered double decrease

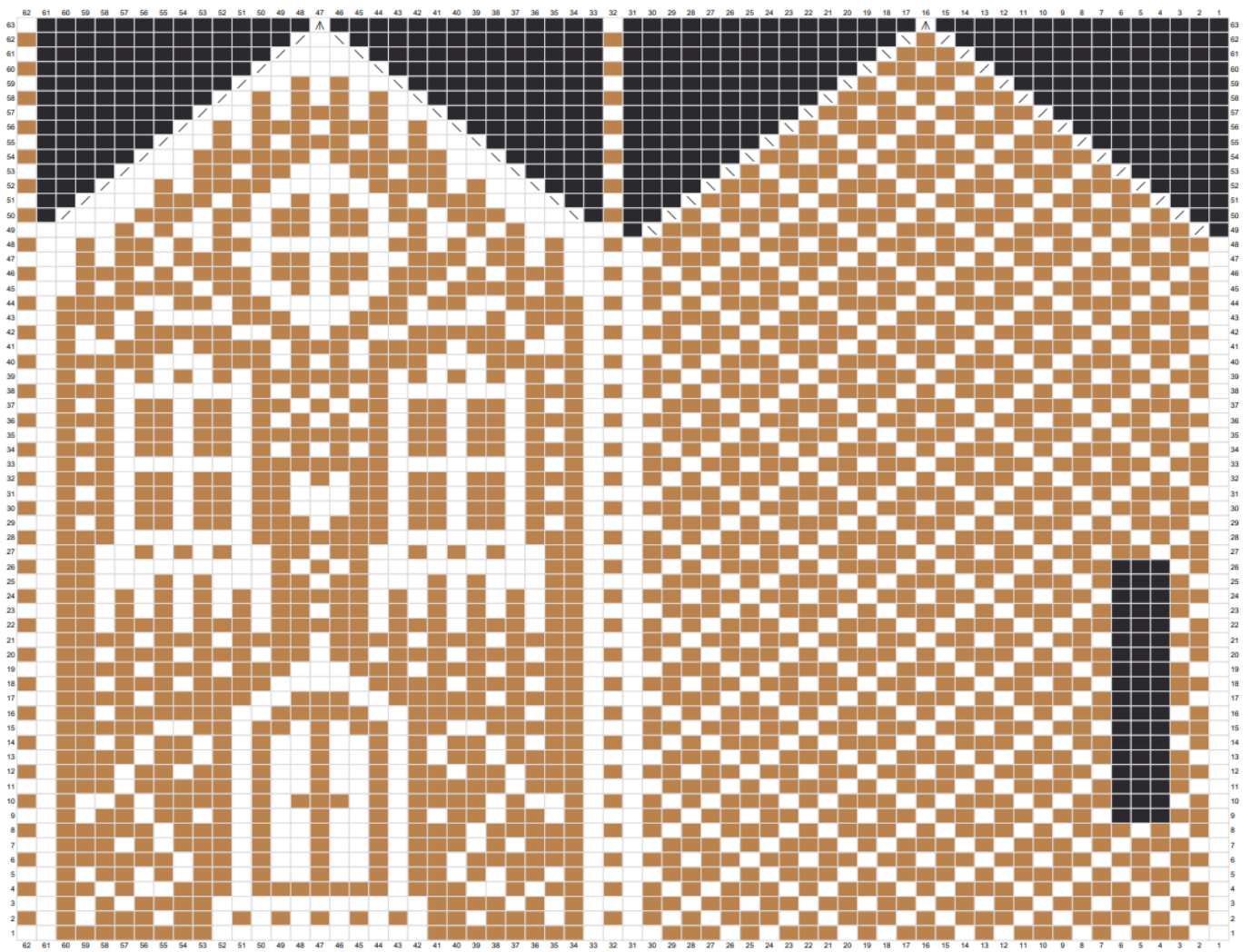


CHART B: LEFT MITTEN

- White
- Caramel
- No stitch
- k2tog
- ssk
- Centered double decrease

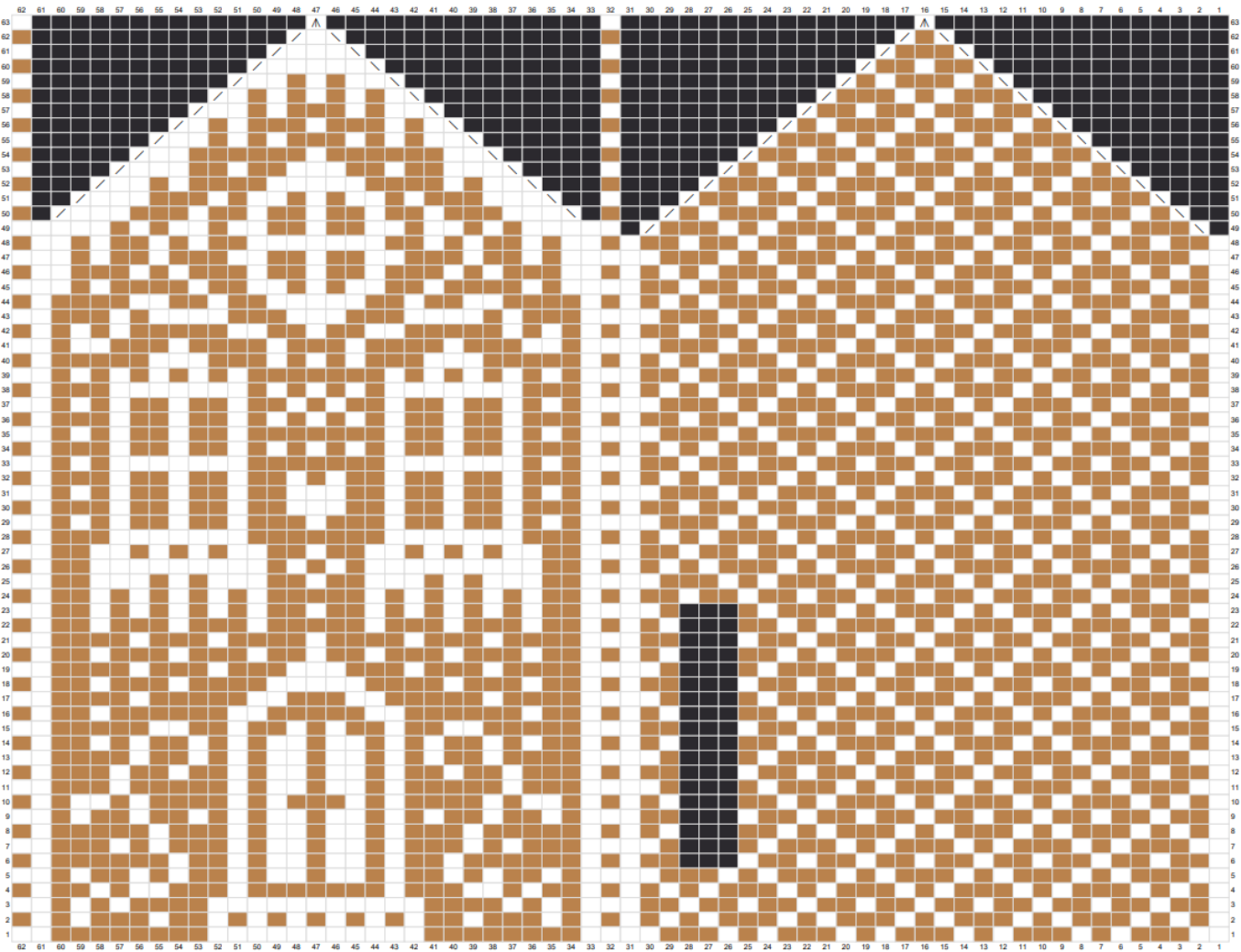
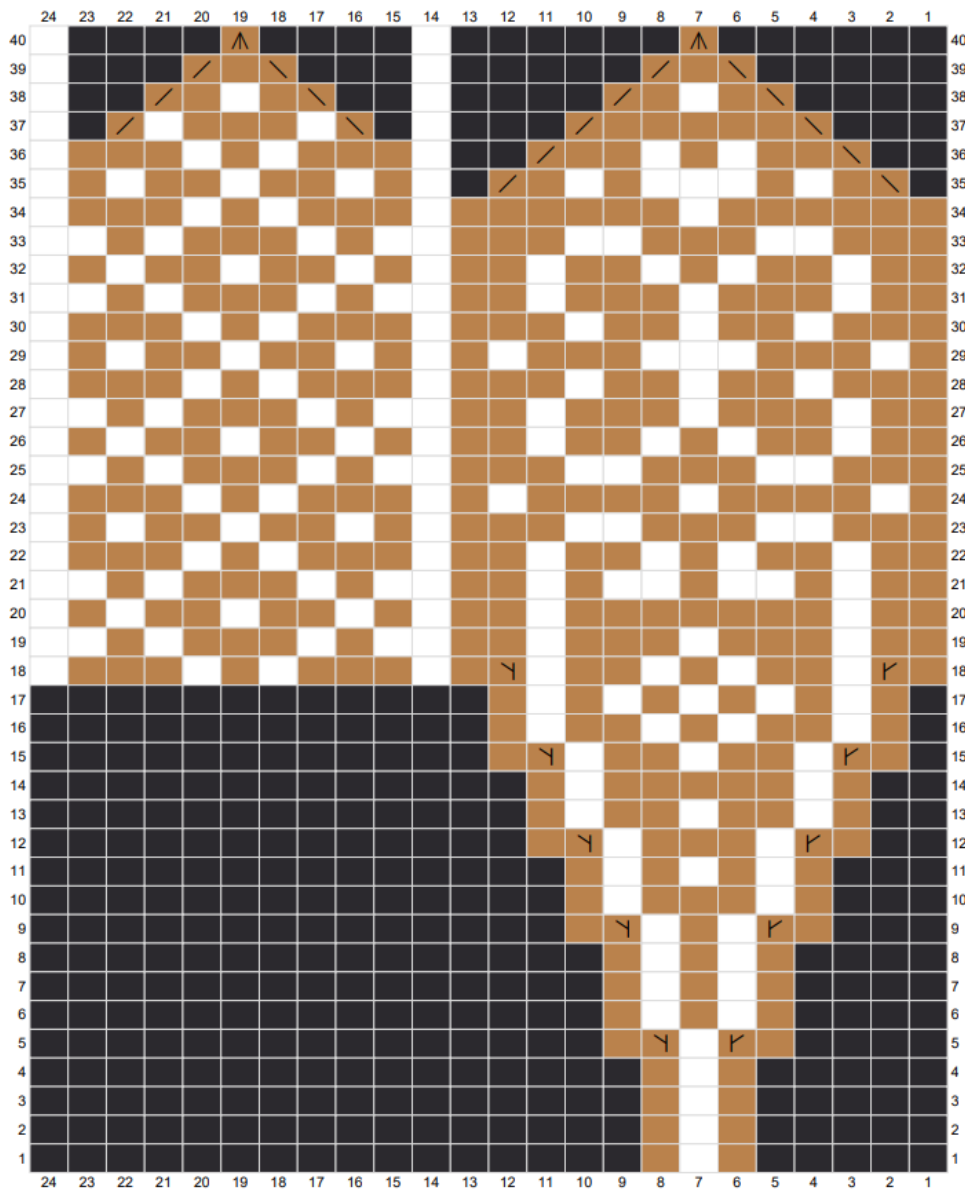


CHART C: THUMB

- White
- M1R
- Caramel
- k2tog
- ssk
- cdd
- no stitch



<https://linktr.ee/fancifulfibres>

Instagram - @fancifulfibres