



Garden fairies

By Jenny Alderbrant

These mittens contains charts for adult and childrens size mittens.

Please read the whole pattern before you start knitting!



**The mittens should be knitted with doublepointed needles or a long circular needle size 2-2,5 mm.*

**The yarn should be about 175-250m/50 gr.
Pure wool or woolblends is best to get warm mittens.
Alpaca also works very well.*

**Gauge is 35st in stockinett and stranded knitting using 2 strands/colors for adult size.*

You can change the size of the mittens by changing the gauge. Change it up to get a smaller mitten and change it down to get a bigger one.

You change the gauge by changing the weight of your yarn and/or the size of your needles

A few things you also need to know before you begin

st-stitch/stitches

k-knit

p-purl

yo- yarn over

ssk-Slip, slip ,knit

2tog-knit 2st together as one - decreasing 1st

S1k1psso- slip1 k, k1, pass slipped st over knitted.-1 st

**Red- means no stitch and shows where the decreases at the top are made and is used as filling in the thumbgusset.*

**The increases on the thumbgusset is done as follows: Pick up the bar between one st, within the gusset and the one next to it (outside the gusset) with the left needle from the front and knitting it in the backloop.*

**The increases are made on the rows where the red decreases and gray increases to the sides.*

**Pink and dark red shows placement of the thumb on child size mittens.*

**The patternchart is read from right to left.*

**for childrens size mittens I suggest a simple ribbed cuff. or make the lace cuff with fewer st.*

**Child size st count within ()*

Cuff

**Cast on 56 (48)st with double needles in patterncolor(purple)*

**Knit 1 row and then change to basecolor (white)*

2tog,yo, 2tog, yo, 2tog, yo, k1, yo, ssk, yo,ssk, yo, ssk, p1

*-Repeat *-* 3 more times*

k13, p1- Repeat *-* 3 times more. (Skip these 2 rows)
 Row 1: *2tog, k4(k3),yo,k1,yo,(k3),ssk, p1*-Repeat*-* 3 times
 Row 2: *k13(k11), p1*- Repeat *-* 3 times
 *Repeat these 2 rows a total of 6-8 times.
 *Knit 1-2 rows in basecolor and increase to 62 (60) st evenly.

Follow the patternchart from here.

*Knit to where the thumb starts and put the next(thumb) 15 (11)st on some scrapyarn or stitchholder.
 *After that you have to cast on 15(11)new stitches and join in the round using long tail cast on and the 2 strands you have.
 *Don't forget to follow the patternchart when you cast them on.

The decreases on the top of the mitten is done as follows:

*Make the decreases on each side of the st along the sides of the mittens.
 *After side st: s1k1psso
 *Before side st: k2tog
 *This means -4 st /row
 *When you have approx 8 st left you cut the yarn and pull it through the loops of the remaining stitches.
 Pull the yarn end through the top of the mitten and tighten. If you want you can make a knot.

Thumb:

**Put the 15 (11)scrapyarnstitches on needles and pick up 17(13) more st evenly around the hole. If it feels tight you can pick up 1-2 extra st on the sides. Decrease all or some of those st after a few rows.*

**Follow the pattern for the thumb. Decrease the same way as the mitten.*

**Cut the yarn when you have approx 8 st left and pull through the loops and the top. Tighten.*

Weave in all loose ends and block the mitten to get the shape you want. The lace edge is shaped in the form of a princess crown and left to dry.

Good luck! ☺

It is ok to sell mittens made after my pattern if you let the buyer know about the pattern and designer. Preferebly with a note saying:

Pattern: Garden fairys

Design: Jenny Alderbrant

It is not allowed to massproduce these mittens(over 20 pairs, and sell as many) As gifts it is allowed.

It is not ok to copy the whole pattern or parts of it or spread it.

You can reach me by mail : jenny.alderbrant@swipnet.se or on Facebook,

Chart
Adult right



Chart
Adult left

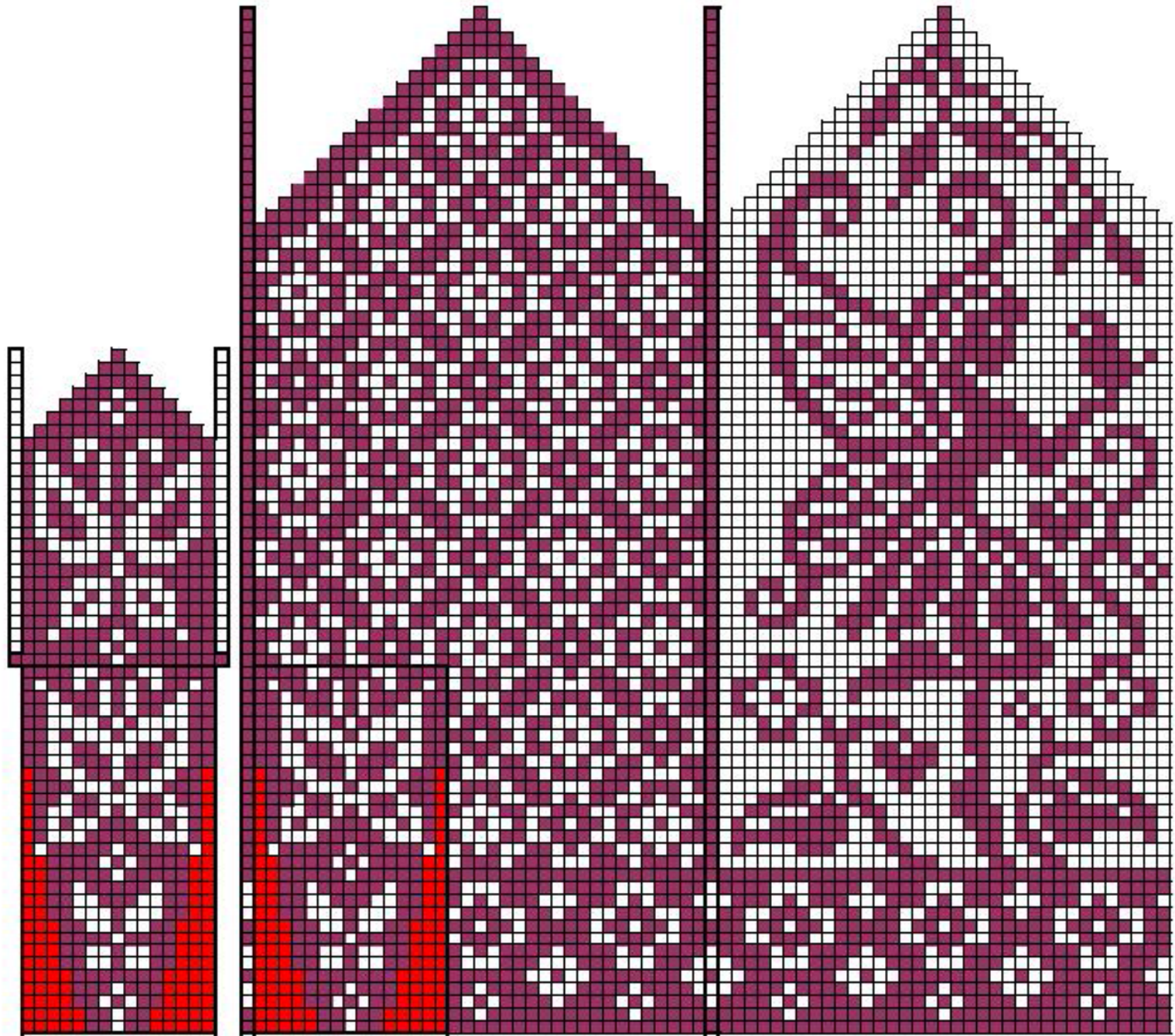


Chart childrens size mittens right and left

