

GARDEN GATE SOCKS

 BACKWOODS KNITS



MATERIALS:

70-90 grams fingering weight yarn
(Main Color)

15-20 grams fingering weight yarn
(Contrast Color)

Size US1 (2.25mm) 9" circular
needles, DPN's, or long circular
needles for magic loop

Size US2 (2.75mm) 9" circular
needles, DPN's, or long circular
needles for magic loop

2 stitch markers

Tapestry needle

GAUGE:

34 st over 4" (10cm)
stockinette stitch,
knit in the round &
blocked

SIZES:

S/M (8"/20.25cm)

L/XL (10"/25 cm)

ABBREVIATIONS:

MC- main color

CC- contrast color

BOR- beginning of
round

R- round/row

st- stitch

m- marker

RS- right side

WS- wrong side

Rep- repeat

k- knit

p- purl

pm- place marker

Sl- slip

sm- slip marker

k2tog- knit 2 together

p2tog- purl 2 together

ssk- slip slip knit

FC- faux cable

m1- make 1 st by lifting bar
between 2 sts and knitting it
through the back loop

Psso- pass slipped stitch over 2
stitches just worked

GARDEN GATE SOCKS

BACKWOODS KNITS

Thank you for purchasing my pattern! I hope y'all enjoy these gorgeous socks as much as I have! If at any point you get stuck or need pattern support I can be reached at backwoodsknits@gmail.com or via Instagram DM @backwoodsknits. I am always happy to help as much as I can! These socks are knit cuff down with a heel flap and gusset.



NOTE FOR HEEL FLAP:

Knitting colorwork flat can be a bit challenging. This tutorial shows a great method for catching floats so you do not create unsightly gaps on your color work when you bring your CC up from the row below.

Link to River Road Knits knitting flat tutorial for heel flap:

<https://www.youtube.com/watch?v=V3v4fOOdHok>

NOTE ON COLOR DOMINANCE:

When knitting colorwork, you will always want to keep your CC to the LEFT of you MC so ensure your color work has clear and crisp edges.

NOTES:

Use the measurements below from the Craft Yarn Council of America to calculate the length of the foot of your sock:

Women's Shoe Sizes

4-6.5: 8-9" (20-23 cm)

7-9.5: 9.25-10" (23-25.5 cm)

10-12.5: 10.25-11" (26-28 cm)

Men's Shoe Sizes

6-8.5: 9.25-10" (23-25.5 cm)

9-11.5: 10.25-11" (26-28 cm)

12-14: 11.25-12" (28.5-30.5 cm)

INSTRUCTIONS

CUFF

SIZE 1 NEEDLES

In MC, cast on 64 (76) stitches using stretchy cast on method such as German twisted.

Join in the round being careful not to twist stitches, pm.

Setup: k3, p1 around for 2 rounds.

Round 1: *(sl1, k2, pss0, p1); rep from * around

Round 2: *(k1, yo, k1, p1); rep from * around

Rounds 3-5: k3, p1 around

Repeat Rounds 1-5 a total of 5 times.

LEG

Setup: Knit around to last 3 sts, k2tog, k1.

You will now have 63 (75) sts

!! SWITCH TO SIZE 2 NEEDLES !!

WORK THE APPROPRIATE LEC COLORWORK CHART FOR YOUR CHOSEN SIZE.

!! SWITCH TO SIZE 1 NEEDLES !!

Break CC.

Knit 3 rounds even in MC

HEEL FLAP

Turn work at BOR marker to begin working heel flap on a WS row. You will now be working flat across back 31 (37) stitches.

NOTE: Working color work flat can be a bit tricky. You will find a link to a great tutorial on Page 1 I highly encourage you to watch. When picking up your CC from the row below, be sure to leave just enough float to prevent pulling. Long floats on these stitches will cause a large gap in your first CC sts of each row.

HEEL FLAP

Setup: k3, p to end

SIZE SMALL/MEDIUM

R1 (RS): p3, work chart across 25 sts, k3

R2 (WS): k3, work chart across 25 sts, p3

Work R1 & R2 until you have finished chart.

Continue heel flap in following pattern until you reach 2”:

R1 (RS): P3, k across

R2 (WS): K3, p across

You will end your heel flap on a R1. On this row you will work

P3, k1, m1, k across. (32 sts)

SIZE LARGE/ X-LARGE

R1 (RS): p3, k3, work chart across 25 sts, k6

R2 (WS): k3, p3, work chart across 25 sts, p6

Work R1 & R2 until you have finished chart.

Continue heel flap in following pattern until you reach 2.5”:

R1 (RS): P3, k across

R2 (WS): K3, p across

You will end your heel flap on a R1. On this row you will work

P3, k1, m1, k across. (38 sts)



HEEL TURN

Setup- Sl1, p16 (19) p2tog, p1, turn

Sl1, k3, ssk, k1, turn

Row 1: sl1, p to 1 st before the gap, p2tog, p1, turn

Row 2: sl1, k to 1 st before the gap, ssk, k1, turn

Continue to work Row 1 and Row 2 until all stitches have been worked, end after completing a Row 2.

PICK UP HEEL STITCHES

You will now be working in the round again. You will find instructions for the Faux Cable (FC) to the right. These are worked exactly same as your cuff, you will just be working one on each end of your front stitches.

With the right side of your sock facing you, start on the left side of your heel flap and pick up sts. (You will be picking up the purl bump closest to the edge of the heel flap.)

Pick up one stitch in the corner between heel flap and BOR marker.

P1, FC, p1, k22 (28) sts, p1, FC, p1, pm.

Pick up 1 stitch in the corner between front stitches and heel flap.

Pick up sts across right side of your heel flap.

Knit across heel turn stitches.

Knit first set off picked up sts to BOR marker.

P1, FC, p1, k22 (28) sts p1 FC, p1, pm

K1, ssk, k the rest of the picked up stitches on right side.

Knit across heel turn st and up gusset st to 3 before BOR m, k2tog, k1.

Work front st in pattern, knit across back sts.

GUSSET

Round 1: Work front st in pattern to m, sm, k1, ssk, k across to last 3 stitches, k2tog, k1, sm

Round 2: Work front st in pattern to m, knit across back sts.

Continue working Rounds 1 & 2 until back sts have been decreased to 32 (38) stitches.

You will now have a total of 64 (76) sts

FAUX CABLE (FC)

Round 1: sl1, k2, psso

Round 2: k1, yo, k1,

Rounds 3-5: k3

FOOT

Work front sts in pattern and back sts in stockinette until foot reaches 3" (3.5") shorter than total desired length. shorter than total desired length. It is best to end this section after completing a Round 3-5 of your FC.

!! SWITCH TO SIZE 2 NEEDLES !!

WORK THE APPROPRIATE FOOT COLORWORK SECTION FOR YOUR CHOSEN SIZE.

!! SWITCH TO SIZE 1 NEEDLES !!

In MC work one round even.

TOE

Round 1: k1, ssk, k1 across to 3 st before m, k2tog, k1, sm, k1, ssk, k to 3 st before BOR m, k2tog, k

Round 2: knit even

Continue to work Round 1 and Round 2 until 28 (36) stitches remain. Break yarn leaving a long tail.

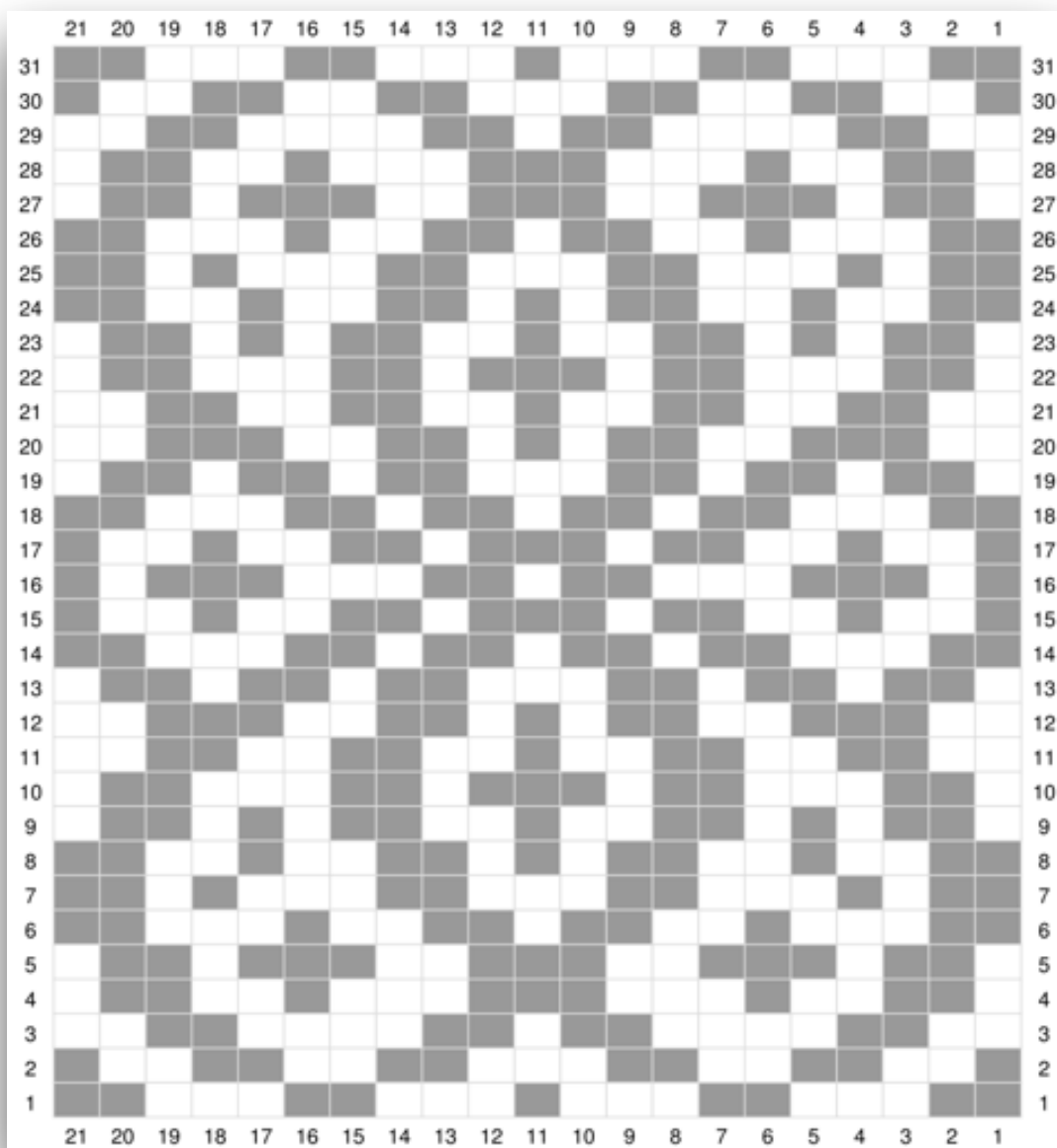
Graft toe together using Kitchener stitch.

Now would be a GREAT time to cast on your second sock!!

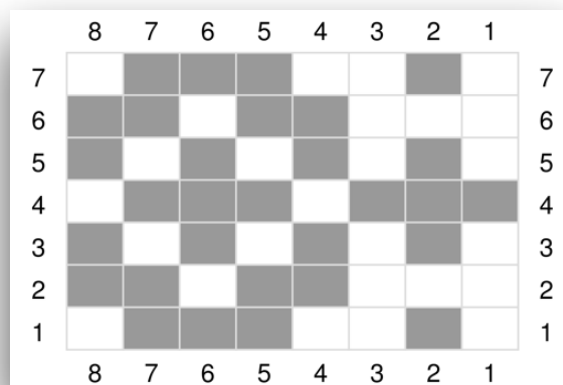
Block your socks and enjoy!

CHARTS SIZE SMALL/MEDIUM

LEC

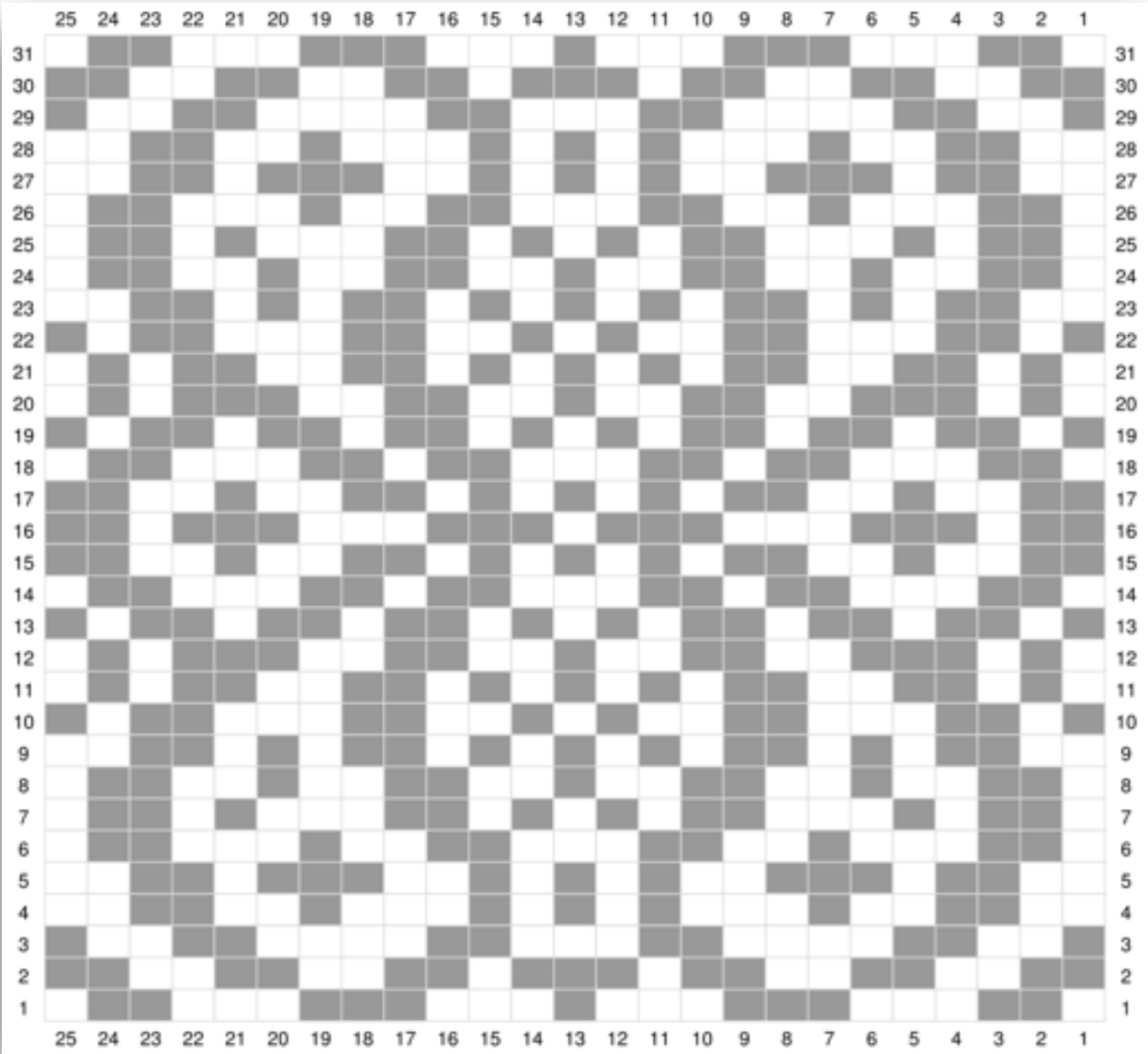


FOOT

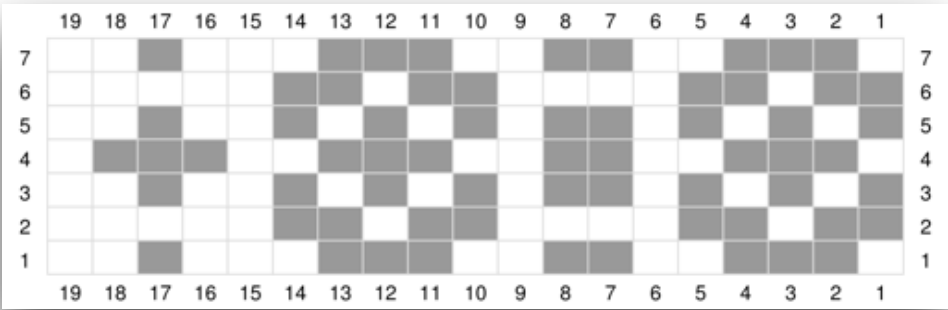
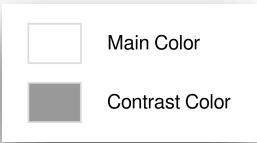


CHARTS SIZE LARGE/X-LARGE

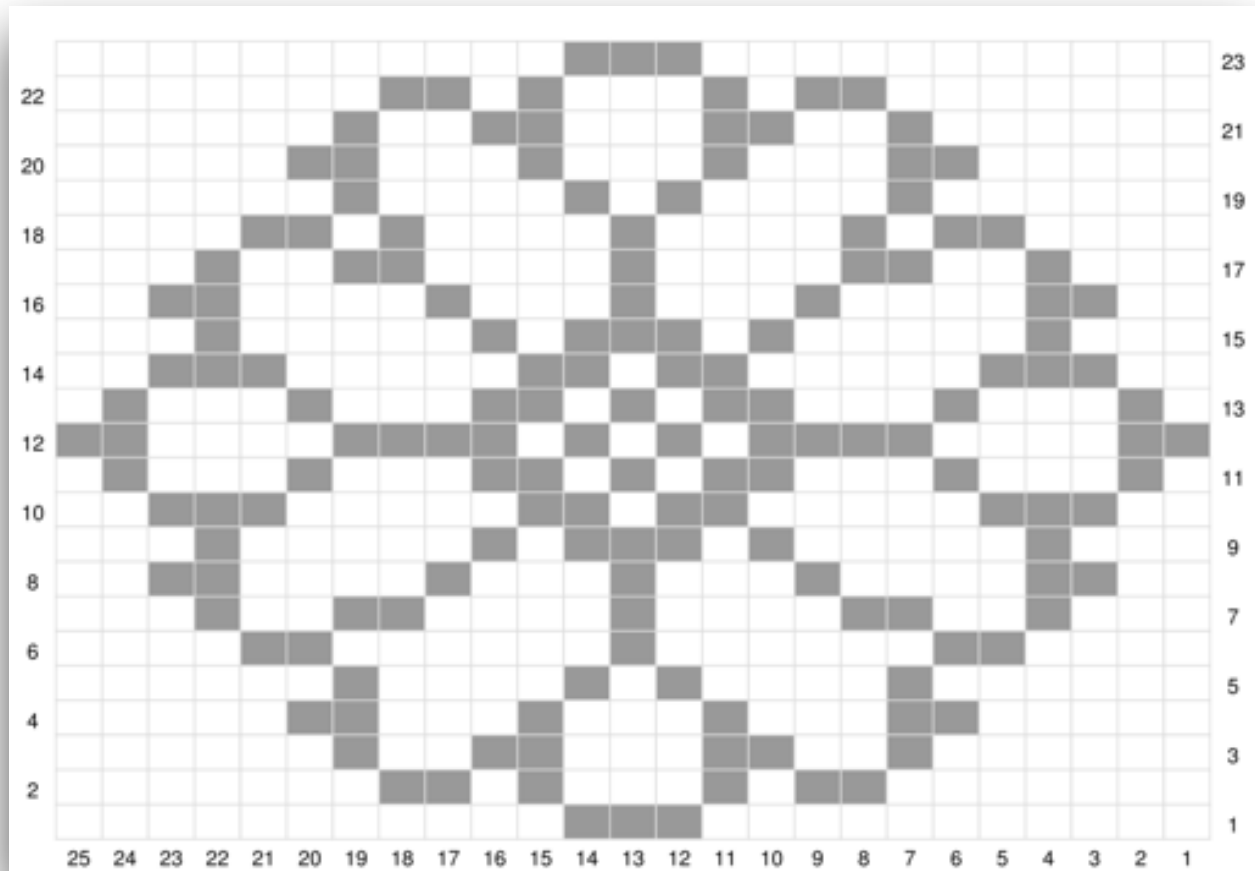
LEC



FOOT



HEEL FLAP CHART



Main Color



Contrast Color



BACKWOODS KNITS

This pattern is for personal use only and is not to be shared or duplicated.

Thank you
Lauren Colby

HANG OUT WITH ME ON SOCIAL MEDIA



@backwoodsknits



@backwoodsknits



BackwoodsKnitsCo



@backwoodsknits