

## Freyja Hat and Sweater

Courtney Kelley

*Originally published in  
Interweave Knits, Fall 2009*

Kathryn Martin

Copyright Interweave Press LLC. Not to be reprinted. All rights reserved.

Freyja Hat and Sweater originally published in *Interweave Knits*, Fall 2009. ©Interweave Press LLC. Not to be reprinted. All rights reserved.



**INTERWEAVE**, publishers of *Interweave Knits* magazine...join the online knitting community at [KnittingDaily.com](http://KnittingDaily.com)  
Visit [InterweaveStore.com/knittingpatterns](http://InterweaveStore.com/knittingpatterns) for more great patterns!



# FREYJA SWEATER

COURTNEY KELLEY

## STITCH GUIDE

**Seed Stitch:** (multiple of 2 sts)

**Rnd 1:** \*K1, p1; rep from \* to end.

**Rnd 2:** \*P1, k1; rep from \* to end.

Rep Rnds 1 and 2 for patt.

**Seed Stitch:** (multiple of 2 sts + 1)

**Rnd 1:** \*K1, p1; rep from \* to last st, k1.

**Rnd 2:** \*P1, k1; rep from \* to last st, p1.

Rep Rnds 1 and 2 for patt.

## NOTES

- ◆ Work seed stitch with a multiple of two stitches when stitch count is an even number; work seed stitch with a multiple of two stitches plus one when stitch count is an odd number.

**COURTNEY KELLEY** is co-owner of Kelbourne Woolens, distributor of The Fibre Company's artisan yarns. Find out more by viewing her blog at [www.kelbournewoolens.com/blog/](http://www.kelbournewoolens.com/blog/).

**Finished Size** 32 (34, 36, 38, 40, 42, 44, 46, 48, 50)" bust circumference. Sweater shown measures 34", modeled with zero ease.

**Yarn** The Fibre Company Road to China Light (65% baby alpaca, 15% silk, 10% camel, 10% cashmere; 159 yd [145 m]/50 g): riverstone (taupe; MC), 6 (6, 7, 7, 8, 9, 10, 10, 11, 12) skeins; ruby (CC1), 2 skeins; citrine (yellow; CC2), aquamarine (blue; CC3), and malachite (green; CC4), 1 skein each. Yarn distributed by Kelbourne Woolens.

**Needles** Size 2 (2.75 mm): 16" and 24" circular (cir) and set of 4 or 5 double-pointed (dpn). Size 4 (3.5 mm): 16" and 24" cir and set of 4 or 5 dpn. Adjust needle size if necessary to obtain the correct gauge.

**Notions** Markers (m; including one contrasting m); stitch holders; tapestry needle.

**Gauge** 24 sts and 32 rows = 4" in St st on larger needle, blocked.

## BODY

With MC and smaller, longer cir needle, CO 192 (204, 216, 228, 240, 252, 264, 276, 288, 300) sts. Place marker (pm) and join in the rnd. Work 96 (102, 108, 114, 120, 126, 132, 138, 144, 150) sts in seed st (see Stitch Guide), pm for side seam, cont in seed st to end. Work in seed st until piece measures 1 (1, 1½, 1½, 1½, 1½, 1½, 1½, 1¾)" from CO. Change to larger, longer cir needle and work 9 (9, 10, 10, 10, 11, 11, 11, 12, 12) rnds in St st. **Shape waist:** \*K1, ssk, knit to 3 sts before side m, k2tog, k1; rep from \* once more—4 sts dec'd. Work 9 (9, 10, 10, 10, 11, 11, 11, 12, 12) rnds even. Rep last 10 (10, 11, 11, 11, 12, 12, 12, 13, 13) rnds 2 more times, then rep dec rnd once more—176 (188, 200, 212, 224, 236, 248, 260, 272, 284) sts rem. Work even for 2¾ (3, 3, 3, 3½, 3½, 3½, 3¾, 3¾)".

**Shape bust:** \*K1, M1, knit to 1 st before m, M1, k1; rep from \* once more—4 sts inc'd. Work 9 (9, 10, 10, 10, 11, 11, 11, 12, 12) rnds even. Rep last 10 (10, 11, 11, 11, 12, 12, 13, 13) rnds 2 more times, then rep inc rnd once more—192 (204, 216, 228, 240, 252, 264, 276, 288, 300) sts. Work even until piece measures 15 (15, 16, 16, 17, 17, 18, 18, 19, 19)" from CO. **Divide**

**for armholes:** Work to side m, remove m, k8 (8, 9, 9, 9, 10, 10, 11, 11, 12), place last 16 (16, 18, 18, 18, 20, 20, 22, 22, 24) sts worked on holder, work to end of rnd, remove m, k8 (8, 9, 9, 9, 10, 10, 11, 11, 12), place last 16 (16, 18, 18, 18, 20, 20, 22, 22, 24) sts worked on holder. Set aside.

## SLEEVES

With MC and smaller dpn, CO 58 (61, 65, 68, 72, 76, 80, 83, 86, 90) sts. Pm and join in the rnd. Work in seed st for 1". Change to larger dpn and St st. Work 8 (9, 9, 9, 10, 10, 10, 11, 11, 12) rnds even. **Shape sleeve:** K1, ssk, knit to last 3 sts, k2tog, k1—2 sts dec'd. Rep last 9 (10, 10, 10, 11, 11, 11, 12, 12, 13) rnds 3 more times—50 (53, 57, 60, 64, 68, 72, 75, 78, 82) sts rem. Work 8 (9, 9, 9, 10, 10, 10, 11, 11, 12) rnds even. **Inc rnd:** K1, M1, knit to last st, M1, k1—2 sts inc'd. Rep last 9 (10, 10, 10, 11, 11, 11, 12, 12, 13) rnds 9 more times—70 (73, 77, 80, 84, 88, 92, 95, 98, 102) sts. Work even until piece measures 16 (17, 17, 18½, 18½, 19½, 20, 20, 21)" from CO, ending last rnd 8 (8, 9, 9, 9, 10, 10, 11, 11, 12) sts before end of rnd. Place next 16 (16, 18, 18, 18, 20, 20, 22, 22, 24) sts on holder.

Freyja Hat and Sweater originally published in *Interweave Knits*, Fall 2009. ©Interweave Press LLC. Not to be reprinted. All rights reserved.



**INTERWEAVE.** publishers of *Interweave Knits* magazine...join the online knitting community at [KnittingDaily.com](http://KnittingDaily.com)  
Visit [InterweaveStore.com/knittingpatterns](http://InterweaveStore.com/knittingpatterns) for more great patterns!



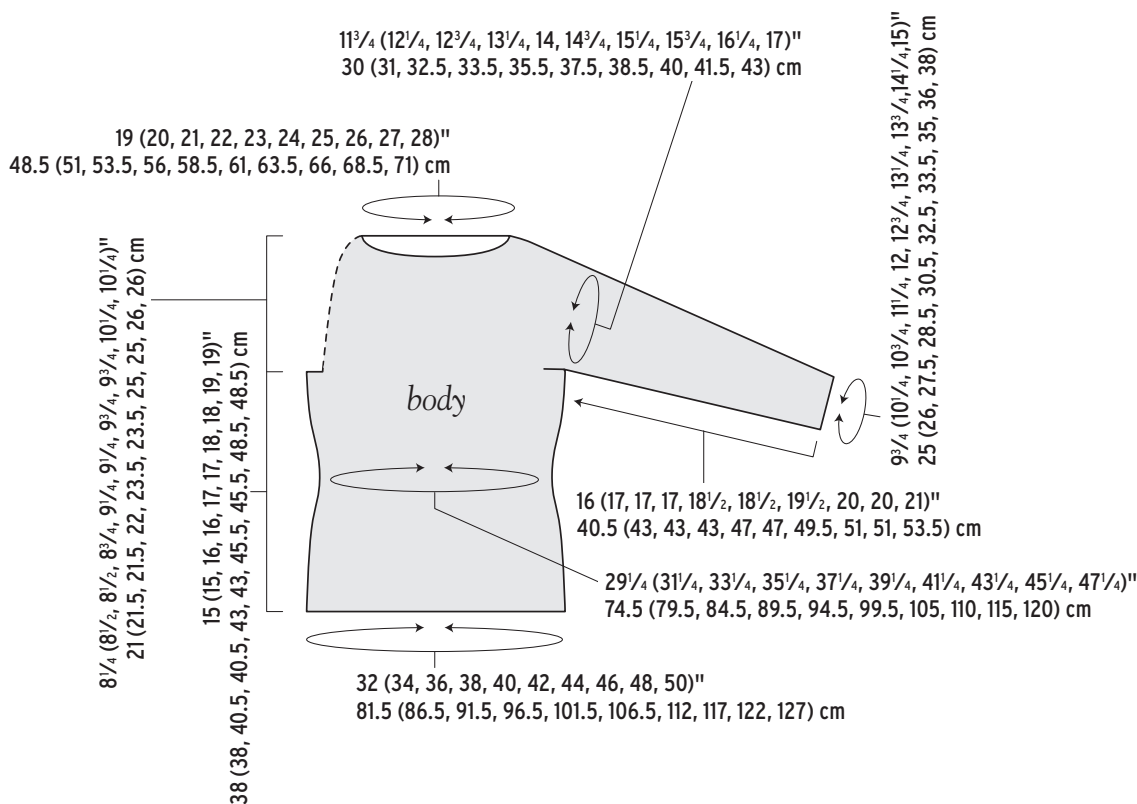
## YOKE

With MC, k80 (86, 90, 96, 102, 106, 112, 116, 122, 126) front sts, pm, k54 (57, 59, 62, 66, 68, 72, 73, 76, 78) right-sleeve sts, pm, k40 (43, 45, 48, 51, 53, 56, 58, 61, 63) back sts, place contrasting m for new beg of rnd, k40 (43, 45, 48, 51, 53, 56, 58, 61, 63) back sts, pm, k54 (57, 59, 62, 66, 68, 72, 73, 76, 78) left-sleeve sts, pm—268 (286, 298, 316, 336, 348, 368, 378, 396, 408) sts. Knit to end of rnd, then work 3 more rnds even. **Dec rnd:** \*Knit to 3 sts before m, ssk, k1, sl m, k1, k2tog; rep from \* 3 more times, knit to end—8 sts dec'd. Work 2 rnds even. Rep last 3 rnds 3 (4, 4, 4, 5, 5, 6, 6, 7, 7) more times—236 (246, 258, 276, 288, 300, 312, 322, 332, 344) sts rem. **Dec rnd:** \*Knit to 3 sts before m, ssk, k1, sl m, k1, k2tog; rep from \* 3 (2, 2, 3, 3, 3, 3, 3, 3, 3) more times, knit to end—228 (240, 252, 268, 280, 292, 304, 314, 324, 336) sts rem. Work 2 rnds even. **Next rnd:** [K2tog] 0 (0, 0, 4, 4, 4, 4, 2, 0,



0) times evenly spaced—228 (240, 252, 264, 276, 288, 300, 312, 324, 336) sts rem. Work short-rows (see Glossary) as foll: Knit to 7 sts before m (before left sleeve), wrap next st, turn; purl to m, then purl to 7 sts before next m (before right sleeve), wrap next st, turn. \*Knit to 7 sts before previously wrapped st, wrap next st, turn; purl to 7 sts before

previously wrapped st, wrap next st, turn; rep from \* 2 (2, 2, 3, 3, 3, 4, 4, 4, 4) more times—4 (4, 4, 5, 5, 5, 6, 6, 6, 6) sets of short-rows total. Knit to end of rnd, working wraps tog with wrapped sts as you come to them. Knit 1 rnd, hiding rem wraps. Work Rows 1–25 of Sweater chart. **Note:** On Row 25, work first st (shown as no st) as k1 with CC2, then work as charted to last 2 sts of rnd, work last k3tog using last 2 sts of rnd and first st of next rnd, pm after k3tog for beg of rnd—152 (160, 168, 176, 184, 192, 200, 208, 216, 224) sts rem. After chart is complete, knit 2 rnds with MC only. **Next rnd:** \*K6, k2tog; rep from \* to end—133 (140, 147, 154, 161, 168, 175, 182, 189, 196) sts rem. Knit 2 rnds. **Next rnd:** \*K5, k2tog; rep from \* to end—114 (120, 126, 132, 138, 144, 150, 156, 162, 168) sts rem. Change to smaller cir needle and work  $\frac{3}{4}$ " in seed st. BO all sts. Graft underarms with Kitchener st (see Glossary). Weave in loose ends. Block lightly. ■



Freyja Hat and Sweater originally published in *Interweave Knits*, Fall 2009. ©Interweave Press LLC. Not to be reprinted. All rights reserved.



**INTERWEAVE**

publishers of *Interweave Knits* magazine...join the online knitting community at [KnittingDaily.com](http://KnittingDaily.com)  
Visit [InterweaveStore.com/knittingpatterns](http://InterweaveStore.com/knittingpatterns) for more great patterns!



# FREYJA HAT

COURTNEY KELLEY

## STITCH GUIDE

**Seed Stitch:** (multiple of 2 sts)

**Rnd 1:** \*K1, p1; rep from \* to end.

**Rnd 2:** \*P1, k1; rep from \* to end.

Rep Rnds 1 and 2 for patt.

## HAT

With smaller cir needle and MC, CO 120 (132) sts. Place marker (pm) and join in the rnd. Work in seed st (see Stitch Guide) for 1". Change to larger needle and work Rows 1–43 of Hat chart, changing to dpn when necessary—60 (66) sts rem. Cont with MC only as foll:

**Rnd 1:** Knit.

**Rnd 2:** \*K4, k2tog; rep from \* around—50 (55) sts rem.

**Rnd 3:** \*K3, k2tog; rep from \* around—40 (44) sts rem.

**Rnd 4:** \*K2, k2tog; rep from \* around—30 (33) sts rem.

**Rnd 5:** \*K1, k2tog; rep from \* around—20 (22) sts rem.

**Rnd 6:** \*K2tog; rep from \* around—10 (11) sts rem.

Cut yarn, leaving a 10" tail. Thread tail through rem sts, pull tight to gather, and fasten off. Weave in loose ends. ■



**COURTNEY KELLEY** is co-owner of Kelbourne Woolens, distributor of The Fibre Company's artisan yarns. Find out more by viewing her blog at [www.kelbournewoolens.com/blog](http://www.kelbournewoolens.com/blog).

**Finished Size** 20 (22)" head circumference; shown in smaller size.

**Yarn** The Fibre Company Road to China Light (65% baby alpaca, 15% silk, 10% camel, 10% cashmere; 159 yd [145 m]/50 g): riverstone (taupe; MC), ruby (CC1), citrine (yellow; CC2), aquamarine (blue; CC3), and malachite (green; CC4), 1 skein each. Yarn distributed by Kelbourne Woolens.

**Needles** Size 2 (2.75 mm): 16" circular (cir). Size 4 (3.5 mm): 16" cir and set of 5 double-pointed (dpn). Adjust needle size if necessary to obtain the correct gauge.

**Notions** Marker (m); tapestry needle.

**Gauge** 24 sts and 32 rows = 4" in St st on larger needle, blocked.



Freyja Hat and Sweater originally published in *Interweave Knits*, Fall 2009. ©Interweave Press LLC. Not to be reprinted. All rights reserved.



**INTERWEAVE**, publishers of *Interweave Knits* magazine...join the online knitting community at [KnittingDaily.com](http://KnittingDaily.com)  
Visit [InterweaveStore.com/knittingpatterns](http://InterweaveStore.com/knittingpatterns) for more great patterns!



### Short-Rows: Wrapping a Stitch

Work to turn point, slip next stitch purlwise to right needle. Bring yarn to front (Figure 1). Slip same stitch back to left needle (Figure 2). Turn work and bring yarn in position for next stitch, wrapping the stitch as you do so. *Note:*

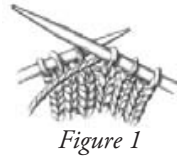


Figure 1



Figure 2

Hide wraps in a knit stitch when right side of piece is worked in a knit stitch. Leave wrap if the purl stitch shows on right side. Hide wraps as follows: Knit stitch: On right side, work to just before wrapped stitch. Insert right needle from front, under the wrap from bottom up, and then into wrapped stitch as usual. Knit them together, making sure new stitch comes out under wrap. Purl stitch: On wrong side, work to just before wrapped stitch. Insert right needle from back, under wrap from bottom up, and put on left needle. Purl them together.

### Kitchener Stitch

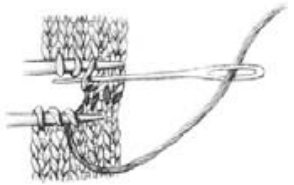
*Step 1:* Bring threaded needle through front stitch as if to purl and leave stitch on needle.

*Step 2:* Bring threaded needle through back stitch as if to knit and leave stitch on needle.

*Step 3:* Bring threaded needle through first front stitch as if to knit and slip this stitch off needle. Bring threaded needle through next front stitch as if to purl and leave stitch on needle.

*Step 4:* Bring threaded needle through first back stitch as if to purl (as illustrated), slip this stitch off, bring needle through next back stitch as if to knit, leave this stitch on needle.

Repeat Steps 3 and 4 until no stitches remain on needles.



Illustrations by Gayle Ford

# The Fibre Company

*distributed by Kelbourne Woolens*

## unique artisan yarns



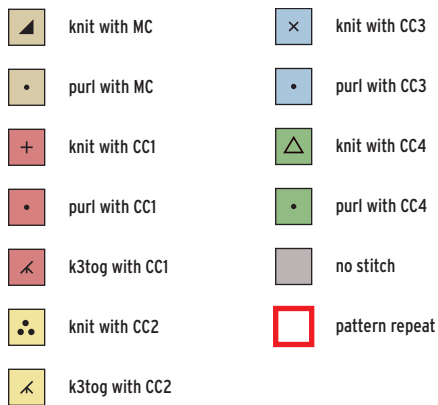
*free patterns, stockist info + other assorted goodies:*  
[www.TheFibreCo.com](http://www.TheFibreCo.com) • [www.KelbourneWoolens.com](http://www.KelbourneWoolens.com)

Freyja Hat and Sweater originally published in *Interweave Knits*, Fall 2009. ©Interweave Press LLC. Not to be reprinted. All rights reserved.

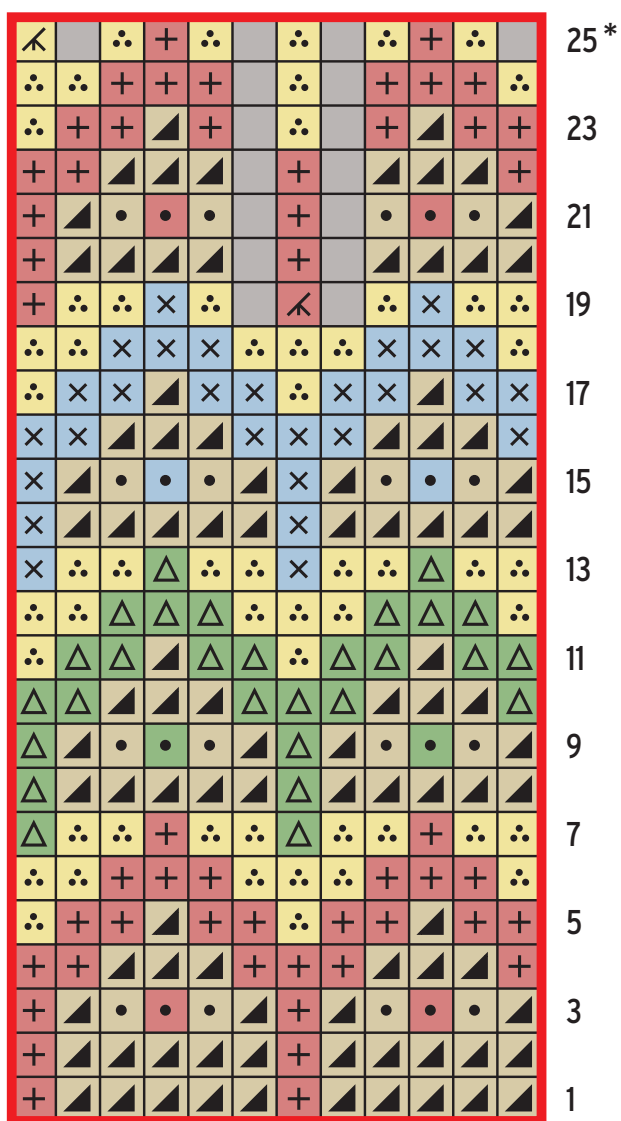


**INTERWEAVE**

publishers of *Interweave Knits* magazine...join the online knitting community at [KnittingDaily.com](http://KnittingDaily.com)  
Visit [InterweaveStore.com/knittingpatterns](http://InterweaveStore.com/knittingpatterns) for more great patterns!

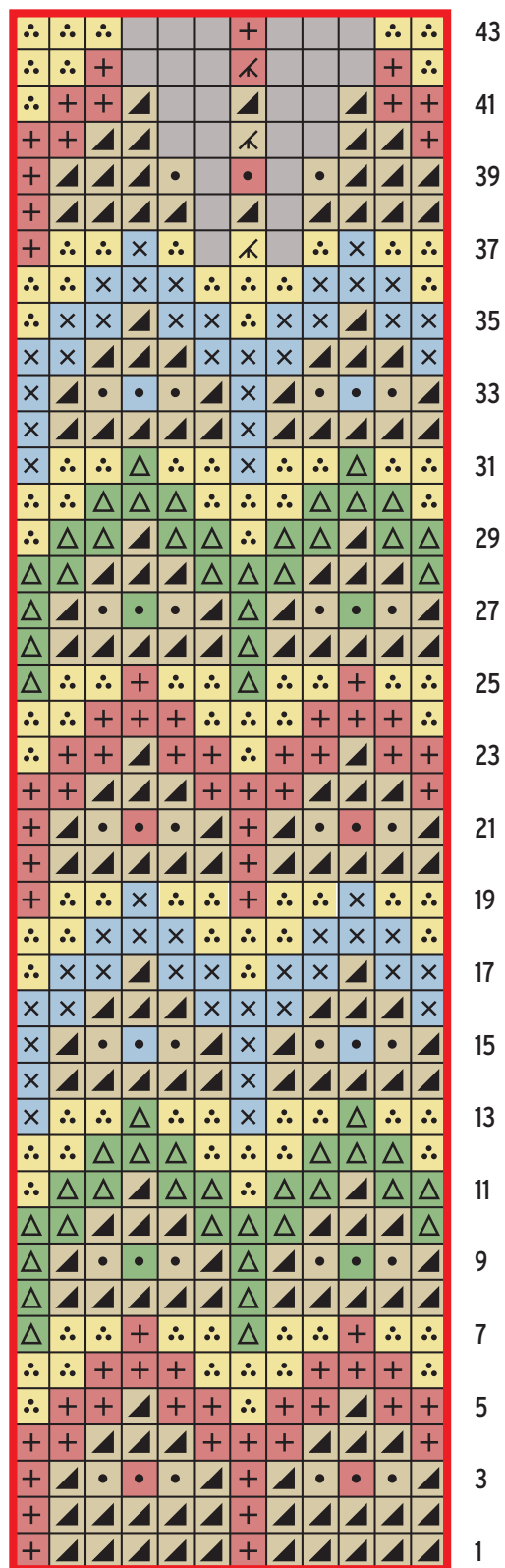


## Sweater



\* Work as given in directions

## Hat



Freyja Hat and Sweater originally published in *Interweave Knits*, Fall 2009. ©Interweave Press LLC. Not to be reprinted. All rights reserved.



**INTERWEAVE** publishers of *Interweave Knits* magazine...join the online knitting community at [KnittingDaily.com](http://KnittingDaily.com)  
Visit [InterweaveStore.com/knittingpatterns](http://InterweaveStore.com/knittingpatterns) for more great patterns!