

FOX PORTRAIT

By Kulabra Designs
Photo by Marit Skavlid



Materials:

1. About 75g of fingering-weight yarn total.
2. Circular needles size US 0-2, depending on your gauge / size needed.
3. Some scrap yarn or stitch holders for the thumb stitches.
4. Tapestry needle and some yarn for embroidery.

Gauge and size: approximately $36 \times 40 = 4''$ for size S/M; adjust your gauge if you need a different size.

Mittens: using white yarn, cast on 60 sts. on circular needles, distribute the stitches evenly, join in the round without twisting, and knit 1-2cm. of 1X1 rib. Proceed with the chart in stranded colorwork technique for 23 rows.

In 24th row, redistribute stitches so that you have 24sts on needle 1, and 36sts on needle 2. Also, in 24th row, put stitch markers around the central thumb stitch. You will be forming the thumb gusset by adding stitches between the markers according to the chart until you have added 12 stitches. To add a stitch: pick up the yarn float between stitches with the right needle, twist it, put it on the left needle and knit it. In order to have neat and symmetrical increases, twist added stitches to the right on the right side, and to the left on the left side of the thumb.

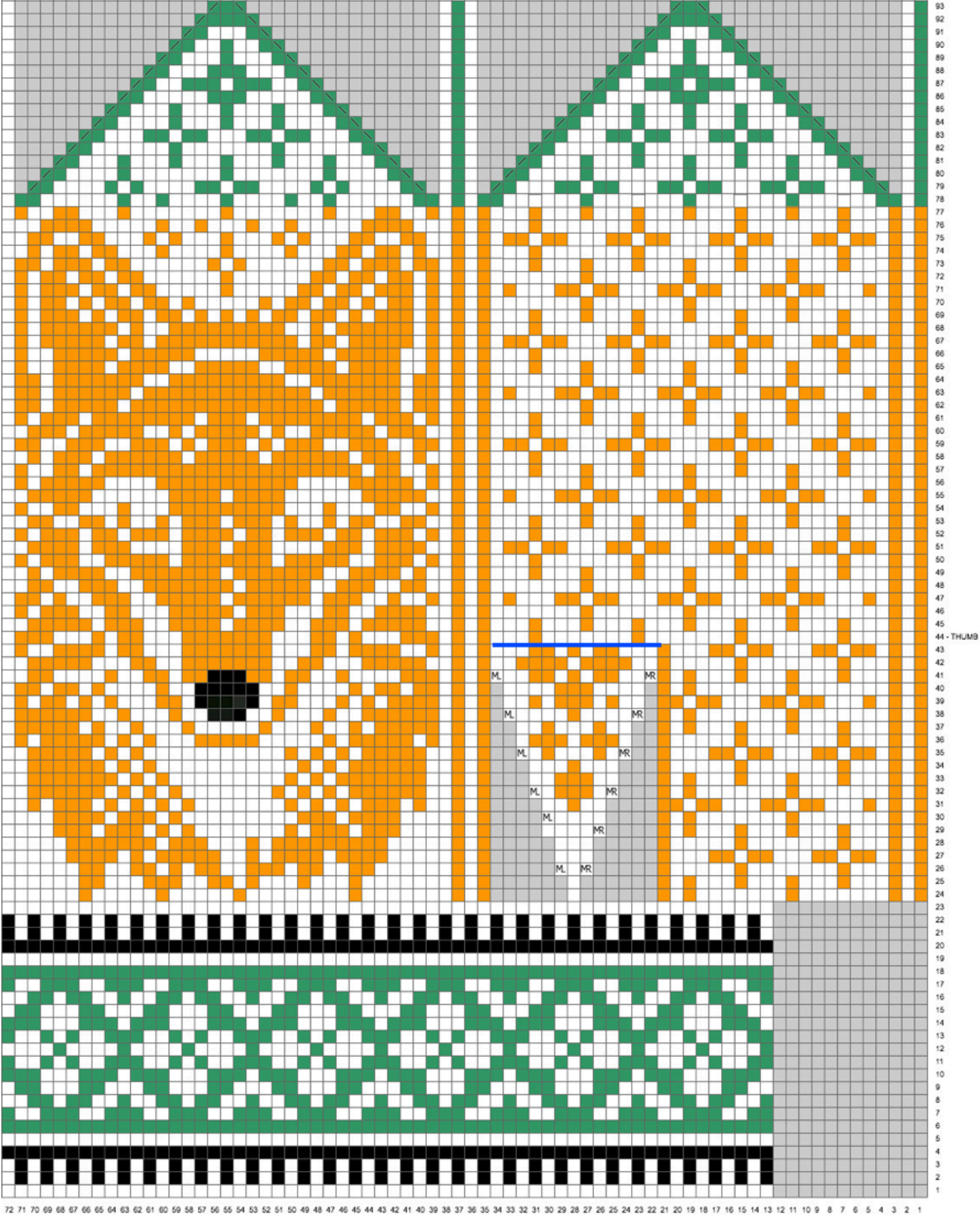
Thumb hole: In round 44, put the 13 sts. just under the blue line on the charts on a stitch holder or waste yarn, and CO the same number of sts. in the same row. Join in the round and continue knitting mitten body as charted on 72 sts.

Thumbs: The thumb opening is highlighted with blue line on the charts. The blue line on the thumb chart shows the stitches from the stitch holder (the thumb front), the remaining stitches are picked up. The thumbs are worked on 30 stitches (13X2 from mitten body + 2X2st. picked on the sides, marked with blue squares).

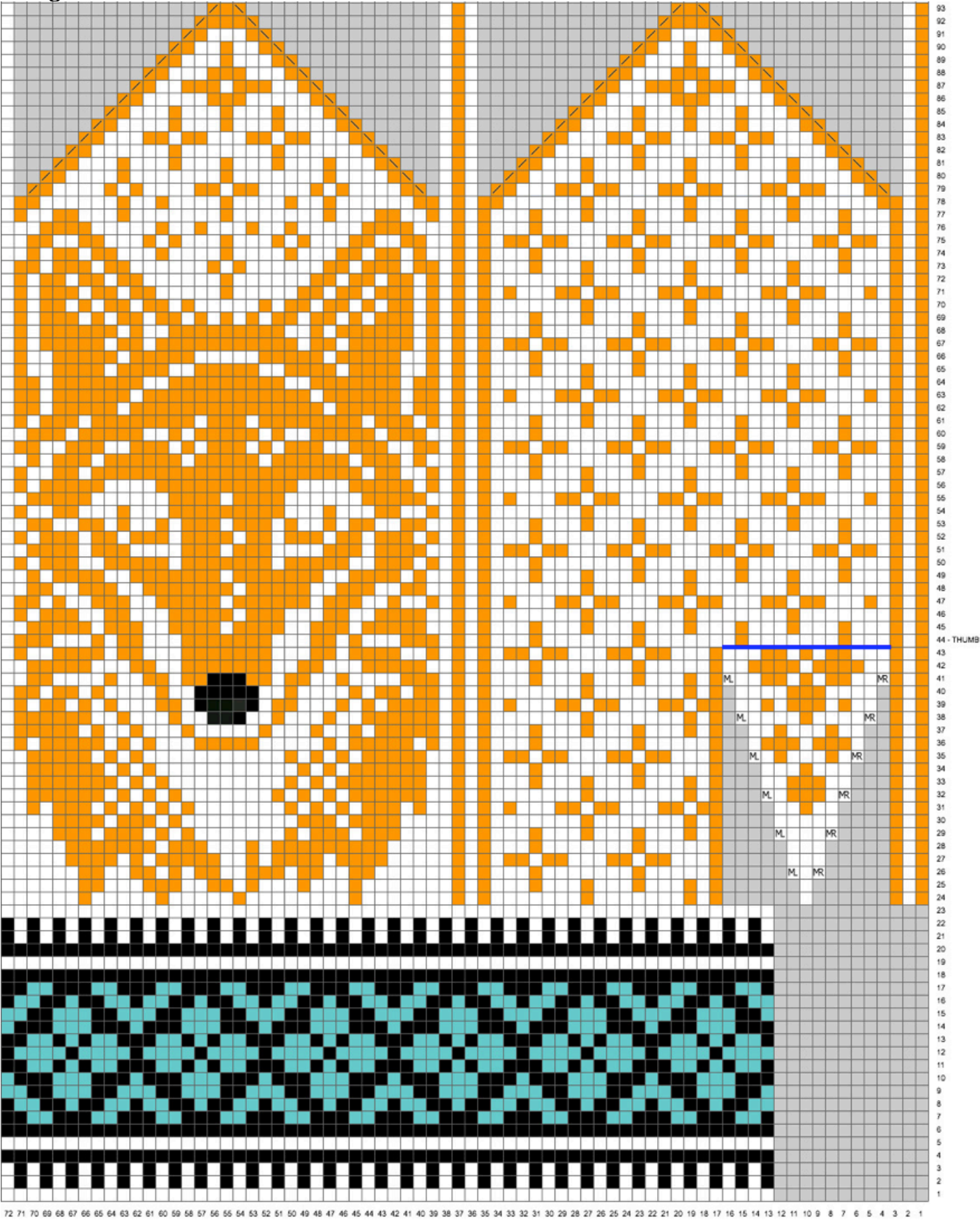
Thumb and mitten tips: When you have 5-6 stitches left on each needle, pull the yarn tail through remaining stitches and inside the mitten, and make a knot.

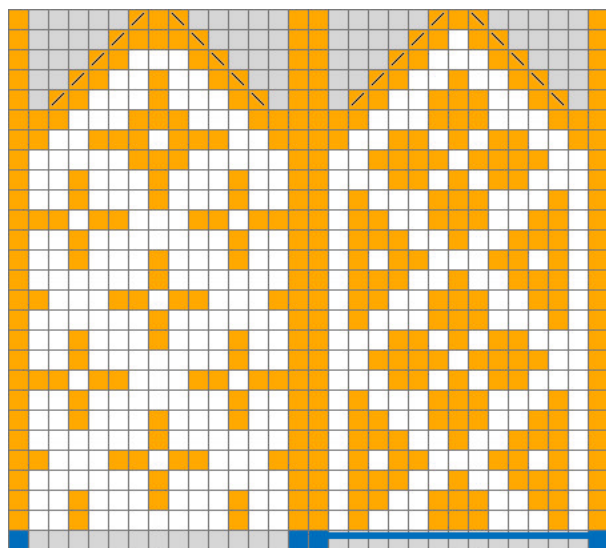
Notes about the charts: Gray cells on the chart show empty stitches – do not knit those. There are two color options – pick the one you like best. Knit the nose orange, embroider with duplicate stitch afterwards. Please see the separate eyes embroidery chart at the end of this PDF.

Left mitten:



Right mitten:



Thumbss, 30 sts. wide. Male two:

Knit



Left leaning decrease (S1K1psso or SSK)



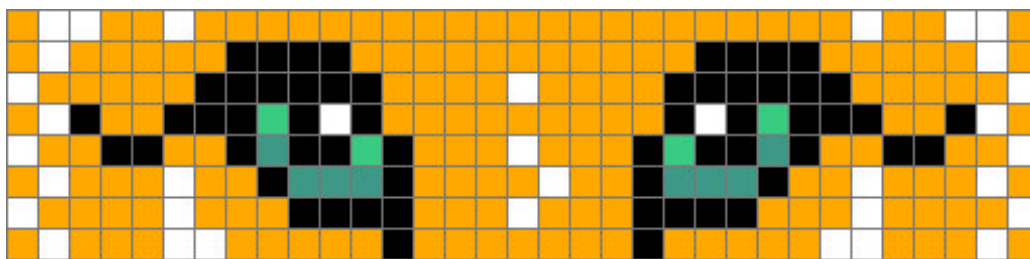
k2tog



Make 1 right



Make 1 left

Chart for embroidery:**COPYRIGHTS AND ALL OTHER RIGHTS:**

The pattern is intended for your personal use only. You cannot copy, duplicate, display or distribute either the hard copy or an electronic pattern, or any part of it. However, you can sell handmade items made using this pattern as long as those are handmade by you personally. No mass production is allowed.