

WEST YORKSHIRE SPINNERS



ColourLab

100% British Wool

DK



Forager

Knitted Blanket by Chloé Elizabeth Birch

Level

WEST YORKSHIRE SPINNERS



THE
CROFT
100% SHETLAND WOOL
DK

In association with



Jamieson
& Smith

Forager

Blanket by Chloé Elizabeth Birch

Level

Forager Blanket

by Chloé Elizabeth Birch

Level 



Measurements

Width x Length

cm	98 x 118
in	38 ½ x 46 ½

Working From a Chart

When working from a chart you will read all **RS** rows from right to left and all **WS** rows from left to right.

Fair Isle and Intarsia Techniques

When working with two or three colours at once, the colours not in use should be stranded loosely across the back of the colour being used. When stranding the yarn becomes difficult, use a separate ball of yarn for each colour and twist the yarn about to be used around the colour just used to link yarns together on the **WS** to avoid a hole.

Equipment

- One pair 4mm (UK8/US6) knitting needles.
- One 4mm (UK8/US6) 100cm long circular needle.
- Cable needle.
- Two stitch markers.

Tension

22 sts and 30 rows to 10cm measured over stocking stitch colourwork on 4mm needles or size needed to achieve stated tension.

It is essential to work to the stated tension to ensure success.

Part One

22 sts and 36 rows to 10cm measured over waffle stitch on 4mm needles or size needed to achieve stated tension.

Part Two

27 sts and 32 rows to 10cm measured over honeycomb cable on 4mm needles or size needed to achieve stated tension.

Part Three

24 sts and 30 rows to 10cm measured over check pattern on 4mm needles or size needed to achieve stated tension.






Part Four

24 sts and 30 rows to 10cm measured over Vine pattern on 4mm needles or size needed to achieve stated tension.

Yarn






Colourway One

West Yorkshire Spinners – ColourLab DK

-  **A – Soft Stone (1204)**
2 x 100g (for finished Blanket)
-  **B – Latte Brown (1135)**
1 x 100g (for finished Blanket)
-  **C – Fern Green (1207)**
3 x 100g (for finished Blanket)
-  **D – Crimson Red (556)**
2 x 100g (for finished Blanket)
-  **E – Zesty Orange (476)**
2 x 100g (for finished Blanket)

Colourway Two

West Yorkshire Spinners – The Croft DK

-  **A – Sandvøe (135)**
2 x 100g (for finished Blanket)
-  **B – Burnside (690)**
1 x 100g (for finished Blanket)
-  **C – Greenbank (404)**
2 x 100g (for finished Blanket)
-  **D – Skelberry (580)**
2 x 100g (for finished Blanket)
-  **E – Challister (1019)**
3 x 100g (for finished Blanket)

Forager Blanket
by Chloé Elizabeth Birch
Level

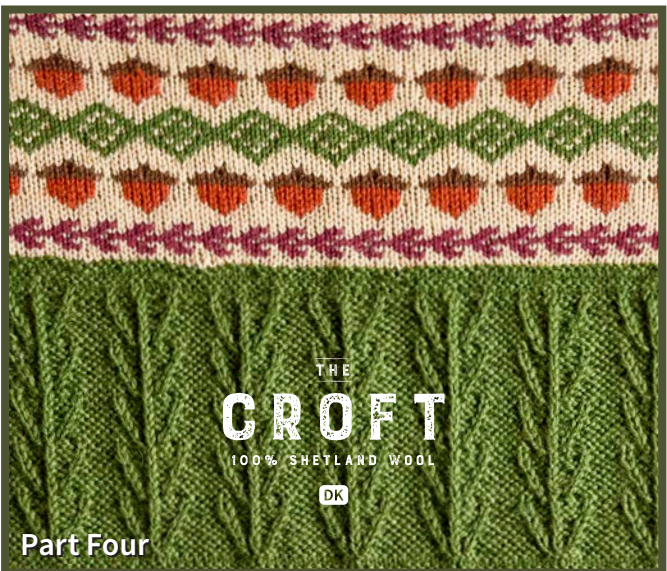


Abbreviations

*	repeat the instructions following the single asterisk as directed	K	knit
**	when prompted follow the instructions as directed up to the double asterisk or within the two sets of double asterisks	K2tog	knit 2 together
***	when prompted follow the instructions as directed up to the triple asterisk or within the two sets of triple asterisks	m1	make 1 stitch (by picking up loop between last and next stitch and work into the back of this loop)
()	work instructions within brackets as many time as directed	P	purl
CN	cable needle	rem	remaining
dec	decrease(ing)	rep	repeat
inc	Increase(ing)	RS	right side
		st(s)	stitch(es)
		st-st	stocking stitch (1 row knit, 1 row purl)
		tbl	through back of loop
		tog	together
		WS	wrong side

Special Abbreviations

- Cr2R. Slip next st onto CN and hold at **back** of work, K1, then P1 from CN.
- Cr2L. Slip next st onto CN and hold at **front** of work, P1, then K1 from CN.
- C4B. Slip next 2 sts onto CN and hold at **back** of work, K2, then K2 from CN.
- C4F. Slip next 2 sts onto CN and hold at **front** of work, K2, then K2 from CN.



Part One
Marvellous Mushrooms
Level 



Part One – Marvellous Mushrooms

Using 4mm needles and B, cast on 192 sts.

Knit 4 rows.

Row 1 (RS): K to end.

Row 2 (WS): P to end.

Row 3: P1, *K1, P2, rep from * to last 2 sts, K1, P1.

Row 4: K1, *P1, K2, rep from * to last 2 sts, P1, K1.

These 4 rows set waffle stitch and are repeated.

Rep last 4 rows 8 times more.

Knit 4 rows.

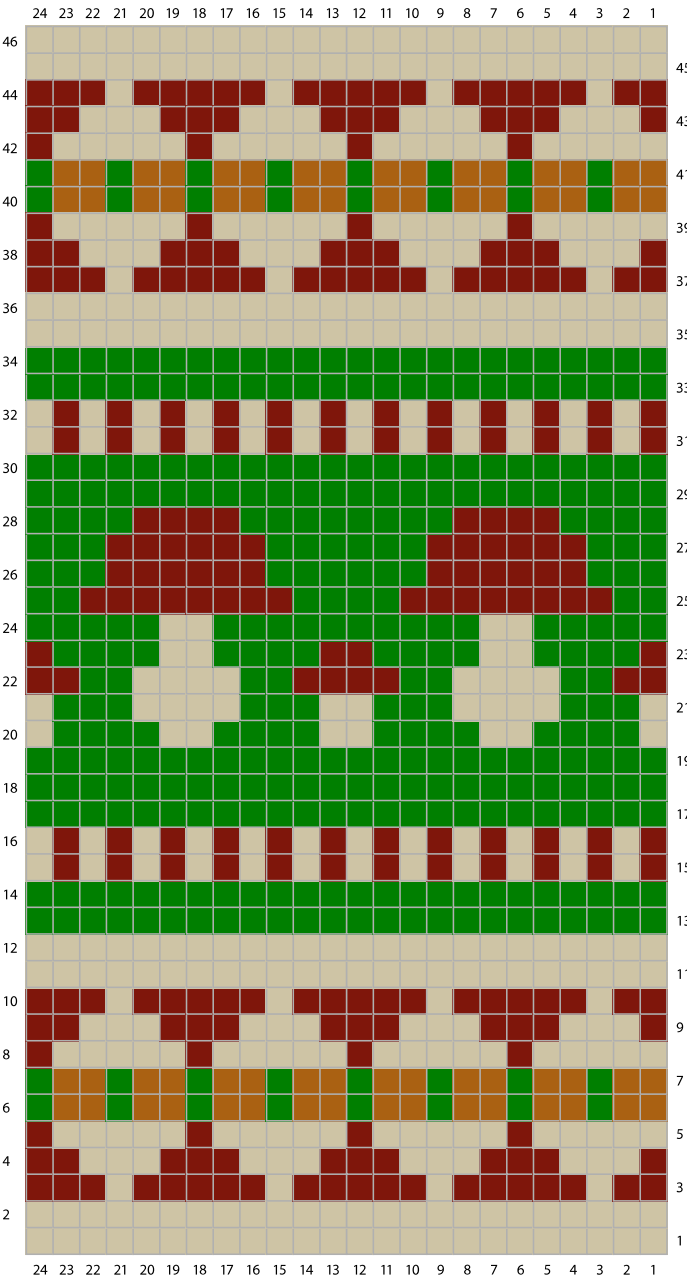
Place Chart 1

Work rows 1–46 in st-st as set on **Chart 1**, and at same time work 24 st rep 8 times.

Part One complete. Leave 192 sts on your needle.



Chart 1



RS: Knit
WS: Purl

A
C
D
E

Part Two Pumpkin Picking

Level 🍂🍂🍂🍂🍂

Part Two – Pumpkin Picking

Using D, knit 3 rows.

Inc row (WS): K8, (K2, m1, K2) 44 times, K8. 236 sts.

Row 1 (RS): K to end.

Row 2 (WS): P to end.

Row 3: K2, *C4B, C4F, rep from * to last 2 sts, K2.

Row 4: P to end.

Rows 5–6: As rows 1–2.

Row 7: K2, *C4F, C4B, rep from * to last 2 sts, K2.

Row 8: P to end.

These 8 rows set honeycomb cable and are repeated.

Rep last 8 rows 3 times more.

Dec row (RS): K8, (K1, K2tog, K2) 44 times, K8. 192 sts.

Knit 3 rows.

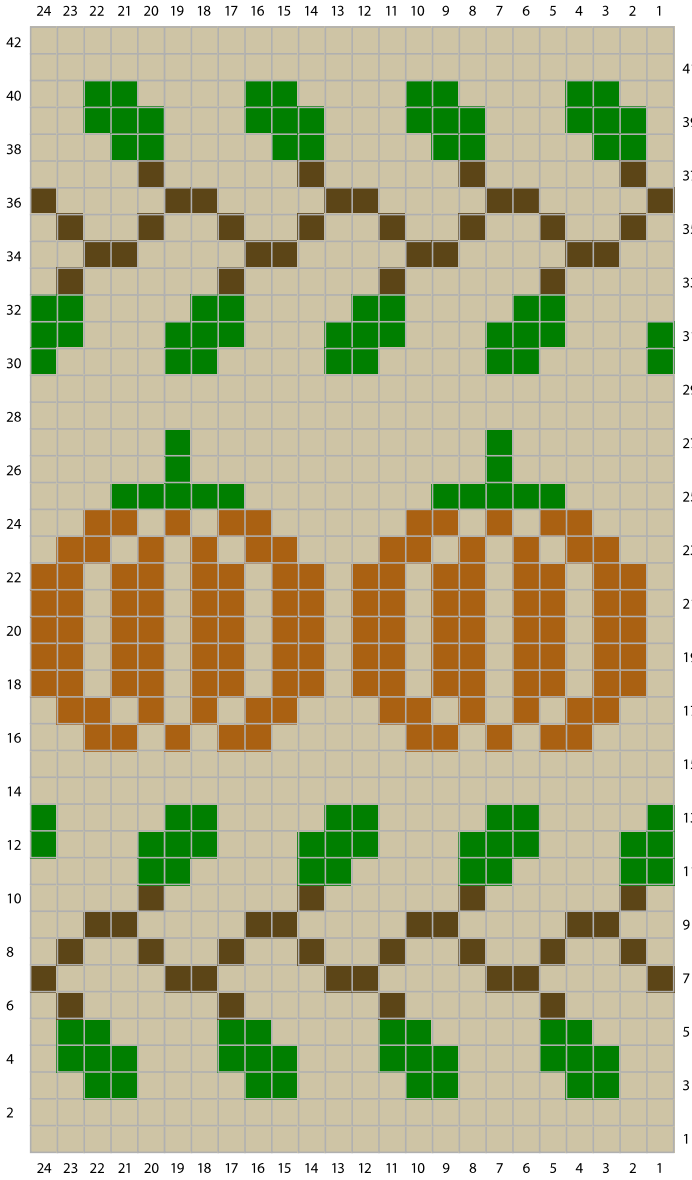
Place Chart 2

Work rows 1–42 in st-st as set on Chart 2, and at same time work 24 st rep 8 times.

Part Two complete. Leave 192 sts on your needle.



Chart 2



RS: Knit
WS: Purl

- A
- B
- C
- E

Part Three

Changing Leaves

Level     

Part Three – Changing Leaves

Using E, knit 3 rows.

Inc row (WS): (K12, m1) 15 times, K12. 207 sts.

Row 1 (RS): P6, *K1tbl, (P1, K1tbl) twice, P5, rep from * to last st, P1.

Row 2: K6, *P1tbl, (K1, P1tbl) twice, K5, rep from * to last st, K1.

Rows 3–4: As rows 1–2.

Row 5: As row 1.

Row 6: P1, P1tbl, (K1, P1tbl) twice, *K5, P1tbl, (K1, P1tbl) twice, rep from * to last st, P1.

Row 7: K1, K1tbl, (P1, K1tbl) twice, *P5, K1tbl, (P1, K1tbl) twice, rep from * to last st, K1.

Rows 8–9: As rows 6–7.

Row 10: P1, P1tbl, (K1, P1tbl) twice, *K5, P1tbl, (K1, P1tbl) twice, rep from * to last st, P1.

These 10 rows set check pattern and are repeated.

Rep last 10 rows twice more.

Dec row (RS): (K11, K2tog) 15 times, K12. 192 sts.

Knit 3 rows.

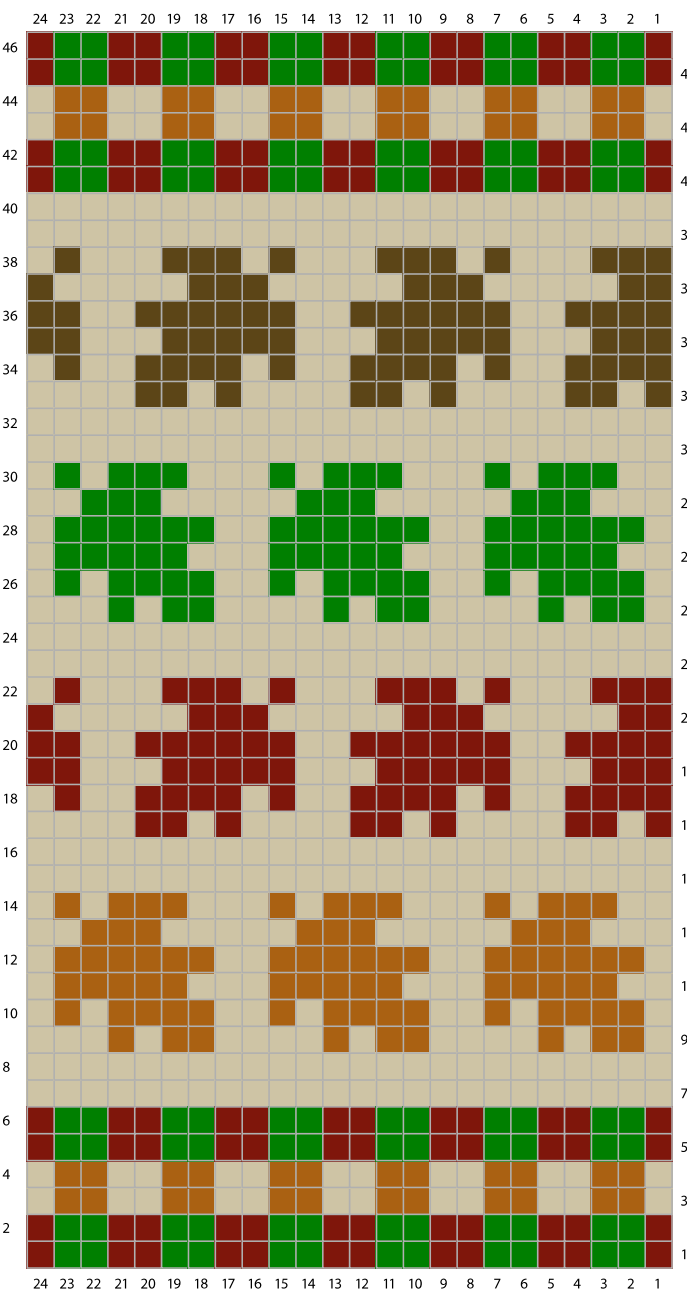
Place Chart 3

Work rows 1–46 in st-st as set on **Chart 3**, and **at same time** work 24 st rep 8 times.

Part Three complete. Leave 192 sts on your needle.



Chart 3



RS: Knit
WS: Purl

- A
- B
- C
- D
- E

Part Four Falling Acorns

Level 🍏🍏🍏🍏🍏

Part Four – Falling Acorns

Using C, knit 3 rows.

Inc row (WS): K8, m1, (K11, m1) 16 times, K8. 209 sts.

Row 1 (RS): P1, *P5, Cr2R, K1tbl, Cr2L, P2, rep from * to last 4 sts, P4.

Row 2: K1, *K5, (P1, K1) twice, P1, K2, rep from * to last 4 sts, K4.

Row 3: P4, *P1, Cr2R, P1, K1tbl, P1, Cr2L, P4, rep from * to last st, P1.

Row 4: K1, *K4, (P1, K2) twice, P1, K1, rep from * to last 4 sts, K4.

Row 5: P4, *Cr2R, P2, K1tbl, P2, Cr2L, P3, rep from * to last st, P1.

Row 6: K1, *K3, P1, rep from * to last 4 sts, K4.

These 6 rows set vine pattern and are repeated.

Rep last 6 rows 4 times more.

Dec row (RS): K7, K2tog, (K10, K2tog) 16 times, K8. 192 sts.

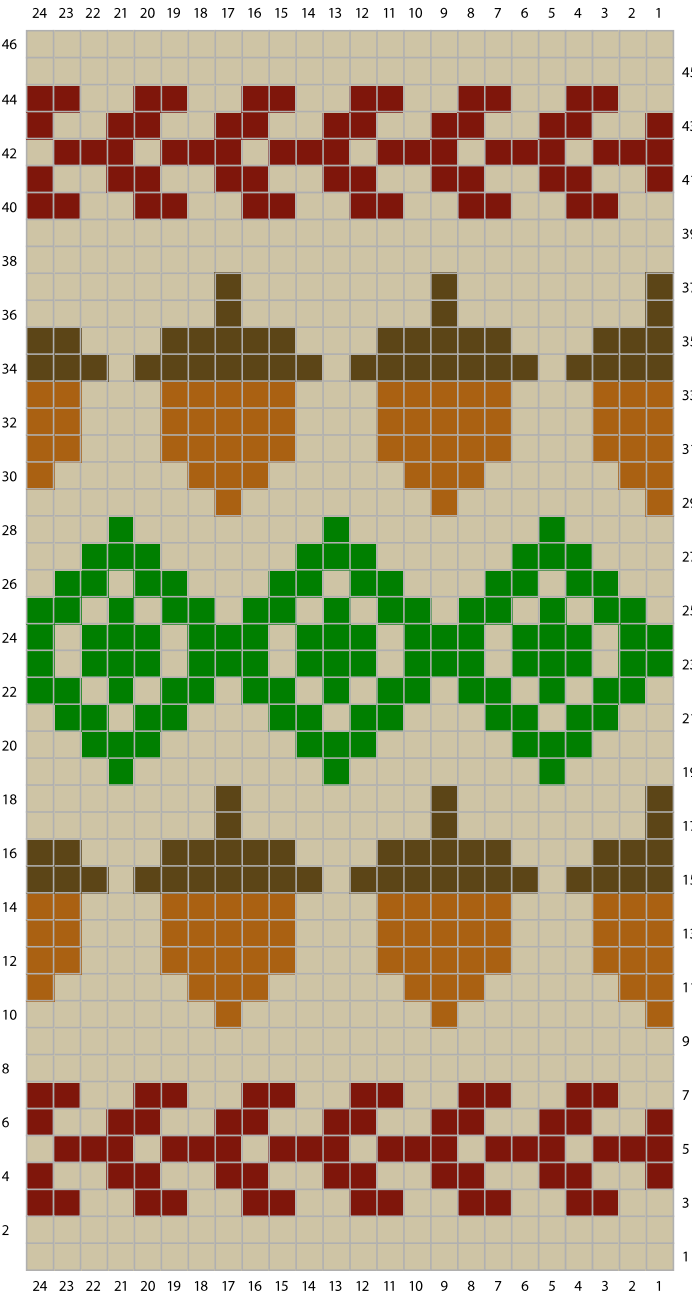
Knit 3 rows.

Place Chart 4

Work rows 1–46 in st-st as set on **Chart 4**, and **at same time** work 24 st rep 8 times.



Chart 4



RS: Knit
WS: Purl

- A
- B
- C
- D
- E

Part Five Border

Level 🍏🍏🍏🍏🍏



Upper Border

Using E for colourway 1 or C for colourway 2:

Knit 3 rows.

****Dec row (WS):** K19, K2tog, (K17, K2tog) 8 times, K19. 183 sts.

Place markers at each end of last row.

Row 1 (RS): K1, *P1, K1, rep from * to end.

Row 2 (WS): P1, *K1, P1, rep from * to end.

Row 3: P1, *K1, P1, rep from * to end.

Row 4: K1, *P1, K1, rep from * to end.

These 4 rows set Irish moss stitch and are repeated.

Rep last 4 rows once more.

Rep row 1 once more.

Knit 3 rows.

Cast off knitwise. **

Lower Border

With RS facing and using 4mm needles, and E for colourway 1 or C for colourway 2, pick up and knit 192 sts evenly along cast on edge.

Knit 3 rows.

Work as given for Upper Border from ** to **.

Left Side Border

With RS facing and using 4mm circular needle, and E for colourway 1 or C for colourway 2, beg at left side edge of Blanket marker, pick up and K2 sts evenly along first 4 rows of Upper Border, 35 sts evenly down Part 4 colourwork panel, 26 sts evenly down Part 4 texture panel, 35 sts evenly down Part 3 colourwork panel, 26 sts evenly down Part 3 texture panel, 32 sts evenly down Part 2 colourwork panel, 26 sts evenly down Part 2 texture panel, 35 sts evenly down Part 1 colourwork panel, 26 sts evenly down Part 1 texture panel and 2 sts evenly along first 4 rows of Lower Border to marker. 245 sts.

***Knit 3 rows.

Next row (RS): Break off yarn, pick up and K10 sts evenly along rem Upper Border side edge, K1, *P1, K1, rep from * to end, pick up and K10 sts evenly along rem Lower Border side edge. 265 sts.

Row 1 (WS): K2, *P1, K1, rep from * to last st, K1.

Row 2 (RS): K2, *P1, K1, rep from * to last st, K1.

Row 3: K3, *P1, K1, rep from * to last 2 sts, K2.

Row 4: K3, *P1, K1, rep from * to last 2 sts, K2.

These 4 rows set Irish moss stitch.

Rep last 4 rows once more.

Rep row 1 once more.

Dec row (RS): K132, K2tog, K to end. 264 sts.

Knit 2 rows.

Cast off knitwise. ***

Right Side Border

With RS facing and using 4mm circular needle and E for colourway 1 or C for colourway 2, beg at right side edge of Blanket marker, pick up and K2 sts along first 4 rows of Lower Border, 26 sts evenly up Part 1 texture panel, 35 sts evenly up Part 1 colourwork panel, 26 sts evenly up Part 2 texture panel, 32 sts evenly up Part 2 colourwork panel, 26 sts evenly up Part 3 texture panel, 35 sts evenly up Part 3 colourwork panel, 26 sts evenly up Part 4 texture panel, 35 sts evenly up Part 4 colourwork panel and 2 sts evenly up first 4 rows of Upper Border to marker. 245 sts.

Work as given for Left Side Border from *** to ***.

Finishing

Weave in ends and pin your Blanket out to the size stated in the pattern, cover with a damp cloth and leave to dry.



WEST YORKSHIRE SPINNERS

Design: **Chloé Elizabeth Birch**

Technical Editor: **Helen Birch and Jill Gray**

Copyright: This design is copyrighted and must not be knitted for resale. Reproduction of this publication is protected by copyright and sold on the condition that it is used for non-commercial purposes.

Queries

For any pattern queries please visit wyspinners.com/errata or contact knitting@wyspinners.com

Disclaimer

Please note that quantities are based on average usage and therefore are approximate. We cannot accept responsibility for the finished items if any yarn other than the one specified is used.

Although every effort has been made to ensure that instructions are correct, West Yorkshire Spinners cannot accept any liabilities.

Owing to photography and printing restrictions the colour reproduction is matched as closely as possible to the yarn.

WYS1000401



Join our Facebook Community

 **WYS Crafter's Hub**

2 Airedale Park, Royd Ings Avenue, Keighley, West Yorkshire, BD21 4DG.

01535 664500 sales@wyspinners.com wyspinners.com