



# Flower Parade Hat

December 2023

This pattern is created and designed by Nikolett Corley Designs - may not be distributed in any form. Thank you!  
<https://www.ravelry.com/designers/nikolett-corley-designs>



## Materials

Worsted weight yarn #4, approx. 3.5oz/210yds

Sample made of Malabrigo Worsted kettle dyed pure merino wool - for average adult size of head.  
100g/192m, Natural 62 and Vermillion 24 colorways  
2 skeins make 2 hats!

## Knitting needles

3.5mm/US4 for the brim

4.5mm/US7 for the body of the hat

## Other notions

Stitch markers

Tapestry needle – to weave in ends

Fur pompom or pompom maker to make your own pompom

## Gauge

20sts X 28 rows = 4", with US7 needles, in stockinette stitches

Check your gauge for proper sizing. Increase or decrease your needles until proper gauge is met.

## Hat sizing

Circumference: 22 inches

Height: 10 inches

## Notes

- Pattern is written in 1 average adult size
- The beanie will be made from bottom-up, in the round, seamless.
- Pattern written out in full and includes chart as well

## Abbreviations

**st(s)**= stitch(es)

**k**= knit

**p**= purl

**ssk**= slip knitwise, slip knitwise, knit 2 stitches together

**k2tog**=knit 2 stitches together

**CO**= cast on





### Begin the hat

With long tail cast on method and 3.5mm/US4 needles, CO 108 sts with **color A**.

Turn your work back and work on (wrong side) k2-p2 sts across.

Join to form a circle, mark the first st of the round.

Work on k2-p2 brim until you have **35 rounds** all together.

The brim of the hat complete.

From the next round change to **4.5mm/US7** needles and work on the body of the hat.

Join **color B** and knit 1 round: k all sts.

From the next round you will work on the flower design, please follow the chart!

Chart shows 1 repeat, you have to repeat it 6 times all together in the round.

Place stitch markers between repeats – if needed.

Complete Row1- Row40 once.

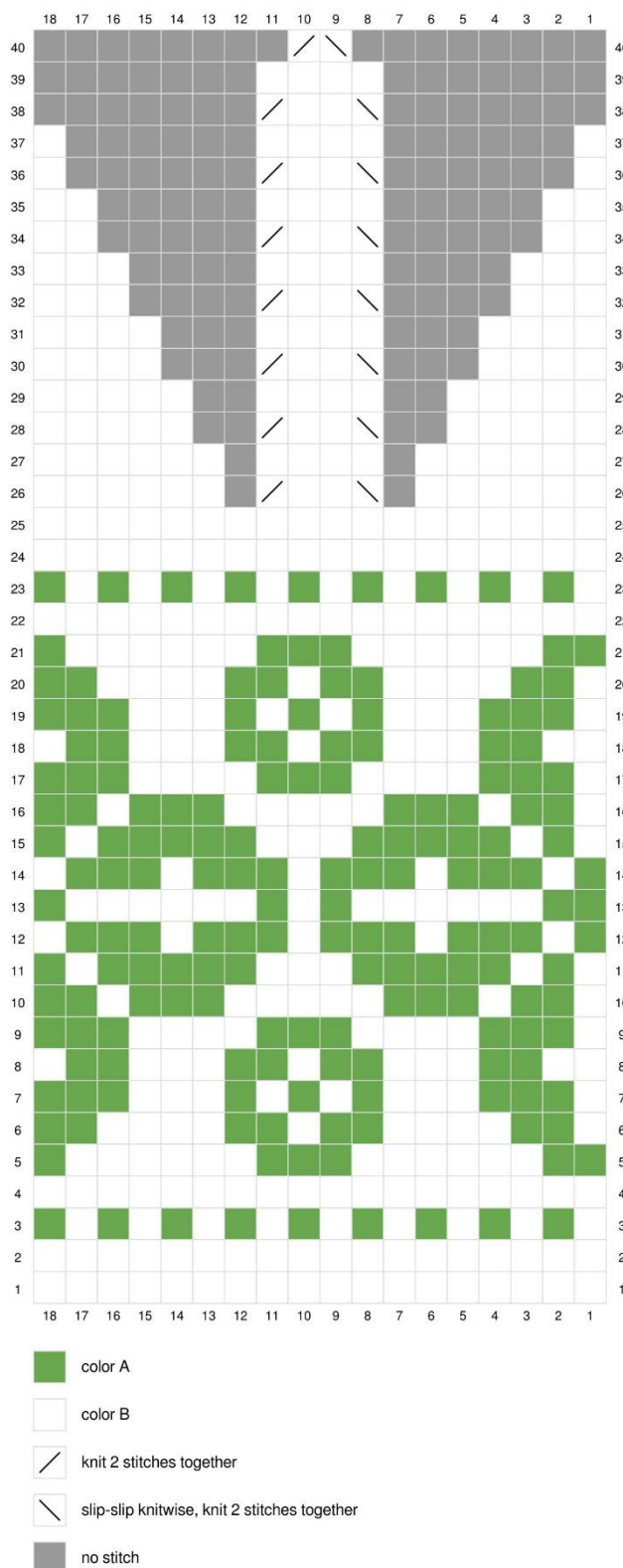
Cut yarn B after Row23 – leave an 5 “ long tail, to be able to weave.

If you like taller hats, add more rounds after Row25 – before decreasing part starts.

Cut the yarn, leave a 10” long tail, weave through remaining stitches, tighten, weave in ends.

Attach pompom.





This pattern is created and designed by Nikolett Corley Designs - may not be distributed in any form. Thank you!  
<https://www.ravelry.com/designers/nikolett-corley-designs>