

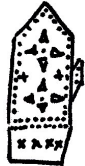
# FLINT JUNIOR MITTENS

by Anna Daku @the.bluebird.box

the bluebird box



## PATTERN INFO



**Size:** Kids Small 4-6 years, Medium 6-8 years and Large 8-10 years

**Finished Measurements and Gauge:** See Table, page 2.

**Intermediate Techniques:**

- two stranded colorwork
- knitting in the round or magic loop
- stretchy cast on

## MATERIALS

### Yarn



- 2 (or more) colours of 100% Wool (non superwash)
- worsted weight: 110 yards/100 m in 50 grams
- some options are Knit Picks Wool of the Andes Worsted (for smaller sizes) or Custom Woolen Mills 2 Ply (for largest size)

### Needles



Double pointed or 100 cm circular needles for magic loop, in the size needed to get gauge, around 3.5 mm to 5 mm. See Table, page 2.

## ABBREVIATIONS

**cm** centimeter    **st** stitch

\* purl (all other stitches not marked with \* are knit)

**L** make one slanting left by picking up the strand between stitches purlwise, placing on the left needle and knitting through the back loop

**R** make one slanting right by picking up the strand between stitches knitwise, placing on the left needles and knitting through the front loop

**M1** make one, slanting either right or left

**\ (ssk)** decrease slanting left by slipping each of the next two stitches knitwise, placing them back onto the left hand needle, then knitting those two stitches together

**/ (k2tog)** decrease slanting right by knitting the next two stitches together

**^** double decrease by slipping one, knitting two together, then passing the slipped stitch over the knit two together

□ main colour

■ contrast colour

■ no stitch (stitches that will be increased or decreased)

□ stitches of the thumb gusset, or decrease stitches of the mitten hand

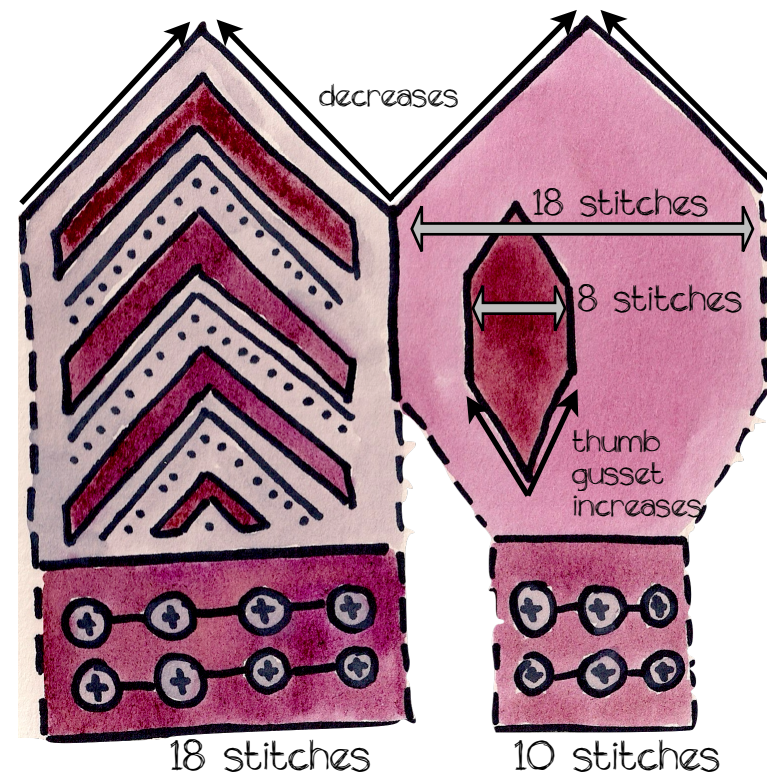


Table 1: Gauge and Needle Size

Size	Kids Small 4-6 years		Kids Medium 6-8 years		Kids Large 8-10 years	
<b>Gauge</b>	25 st/26 rows for 10 cm/4 inches 2.5 st/cm 6.25 st/in		22 st/23 rows for 10 cm/4 inches 2.2 st/cm 5.5 st/in		21 st/22 rows for 10 cm/4 inches 2.1 st/cm 5.25 st/in	
<b>Finished measurements<sup>1</sup></b>	hand circumference (excluding thumb) 14.5 cm/5.5 inches, hand length 12.5 cm/5 inches		hand circumference (excluding thumb) 16 cm/6.5 inches, hand length 14 cm/5.5 inches		hand circumference (excluding thumb) 17 cm/7 inches, hand length 15 cm/6 inches	
<b>Yarn</b>	Knit Picks	CWM <sup>3</sup>	Knit Picks	CWM <sup>3</sup>	Knit Picks	CWM <sup>3</sup>
<b>Recommended needle<sup>2</sup></b>	3.5 mm	not recommended <sup>4</sup>	4 mm	not recommended <sup>4</sup>	5 mm	4.5 mm
<b>Yardage required</b>	30 grams/66 yards of two colours each	not recommended <sup>4</sup>	35 grams/77 yards of two colours each	not recommended <sup>4</sup>	40 grams/88 yards of two colours each	45 grams/88 yards of two colours each

<sup>1</sup> **Gauge must be obtained in order to get the correct finished measurements.** If you choose not to obtain gauge (or even measure it, you wild thing you!), then you knit at your own risk. However, you can play with a tighter or looser gauge if you'd like a smaller or larger mitten than listed. I don't knit swatches for mittens. I take a guess at my needle size, start the cuff, and measure my gauge as I knit. Then change my needle if my gauge is really off.

<sup>2</sup> These are only suggestions. Choose the needle that gives YOU the gauge you need.

<sup>3</sup> CWM = Custom Woolen Mills

<sup>4</sup> I don't recommend this gauge with this yarn, I would find it too tight to knit comfortably.

## PATTERN INSTRUCTIONS

Using contrast colour, cast on 28 stitches using the Norwegian Long Tail cast on method, or a stretchy cast on of your choice. Being careful not to twist stitches, join stitches to knit in the round. Place marker at beginning of row if desired. Begin magic loop, if using circular needles. TIP: I knit these inside out in magic loop, which helps my floats to stay even and loose.

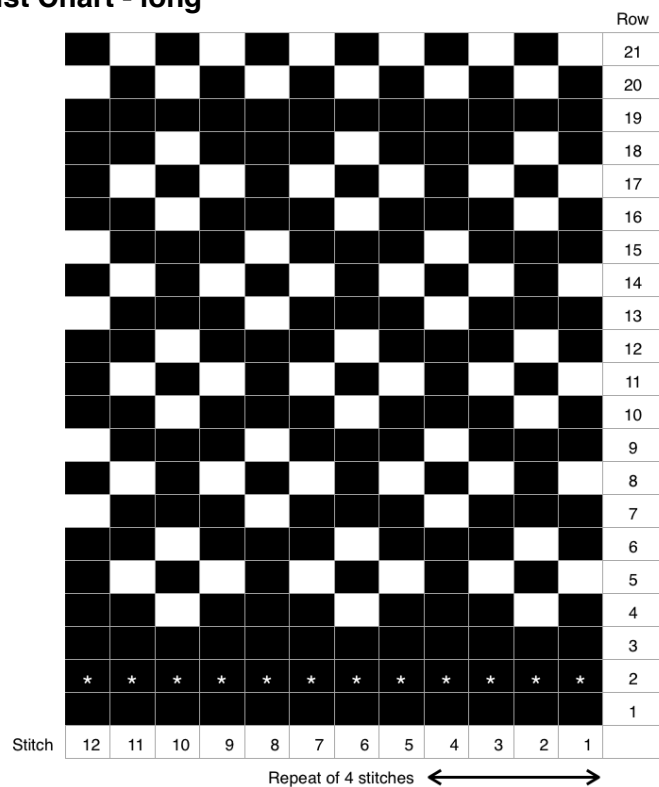
**HAND:** You can now begin knitting from the **Wrist** chart (page 4). Choose the long or short option; the long option fits under jacket sleeves to protect from snow. Once the **Wrist** chart is completed, knit directly from the **Right Hand** chart (page 5), catching any floats that are longer than 5 stitches (Rows 5, 17, 29). A stitch marker can be placed at the beginning of the round and between stitch 18 and 19, to keep track of the palm and back side of the mitten. I distribute my stitches so that all the palm st are on one side of my magic loop, and all the back side st are on the other. It's a bit lopsided until all the stitches of the thumb gusset are increased, but I find it easier to follow the chart this way. PLEASE NOTE: The thumb gusset stitches are outlined in red. These stitches that do not exist at Row 1, but you will be increasing them, starting with Stitch 23 on Row 1. At the beginning of Row 1, there are only 10 stitches on the palm side of the mitten, but 18 on the back side of the mitten (28 stitches). Please note the additional make one (M1) on Row 1 at Stitch 36. Place stitch markers on either side of the thumb gusset to mark increase locations, if desired.

At Row 10, after you have knit the 7 thumb gusset stitches, place them onto a stitch holder or scrap yarn. At Row 11, cast on 7 additional stitches at the previous location of the thumb gusset, using the backwards loop cast on, in pattern. There are now 18 stitches on both the palm and back side of the mitten (36 stitches). Continue knitting from the chart, decreasing at four locations from Row 26 to Row 33, as indicated. Once the **Right Hand** chart is knit, cut yarn and string it through the remaining 4 stitches.

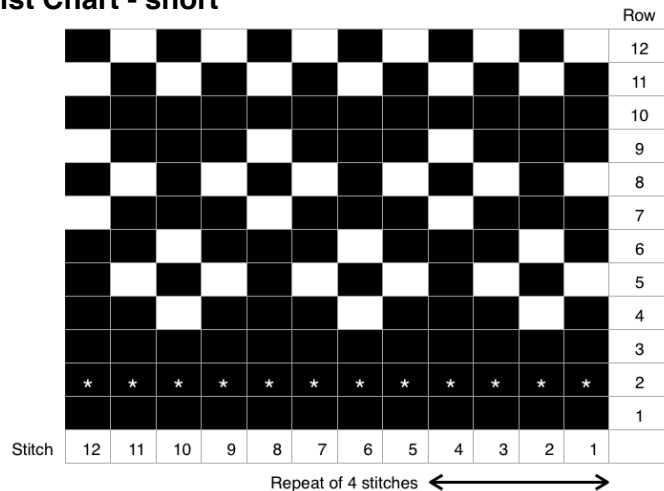
**THUMB:** Continuing on to the thumb, place the 7 live thumb gusset stitches back on the needles. Leave around a 10 cm long tail in the main colour and around 15 cm tail of the contrast colour. [On the next chart row, knit this long contrast colour tail along the back of the work at the thumb location, a similar way to catching floats. This way you will have a tail on each side of the thumb gusset, which you can use to stitch closed small holes if they are left after the thumb is completed.] Knit the **Thumb** chart (page 4), beginning at Row 1, which is: make one right, using the strand between the exposed and palm side of the thumb opening; pick up and knit 7 stitches along the palm side, in pattern; make one left, using the strand between the palm and exposed side of the thumb opening; and, finally, knit the exposed side of the chart (these are the live stitches you placed back on the needles). PLEASE NOTE: Watch your floats at the joins of your needles (either magic loop or double pointed) while knitting the thumb. Always catch your floats at these locations so that you don't have strands stretching across the inside of the thumb. Also, Row 9 shows decreases on the palm side but not the exposed side of the thumb. This is correct, as there are two extra stitches on the palm side. When the **Thumb** chart is complete, cut yarn and string it through the remaining 2 stitches.

Repeat the pattern from the cast on, but using the **Left Hand** chart (page 6). The **Wrist** chart is the same for both mittens, as is the **Thumb** chart, if you ensure that the palm side of the chart is located where you picked up stitches from the thumb gusset. If there is a small hole on either side of the thumb, stitch it closed with the tails from the picked up stitches, or extra wool yarn if needed. Weave in ends along the back of the work. Soak and block if desired.

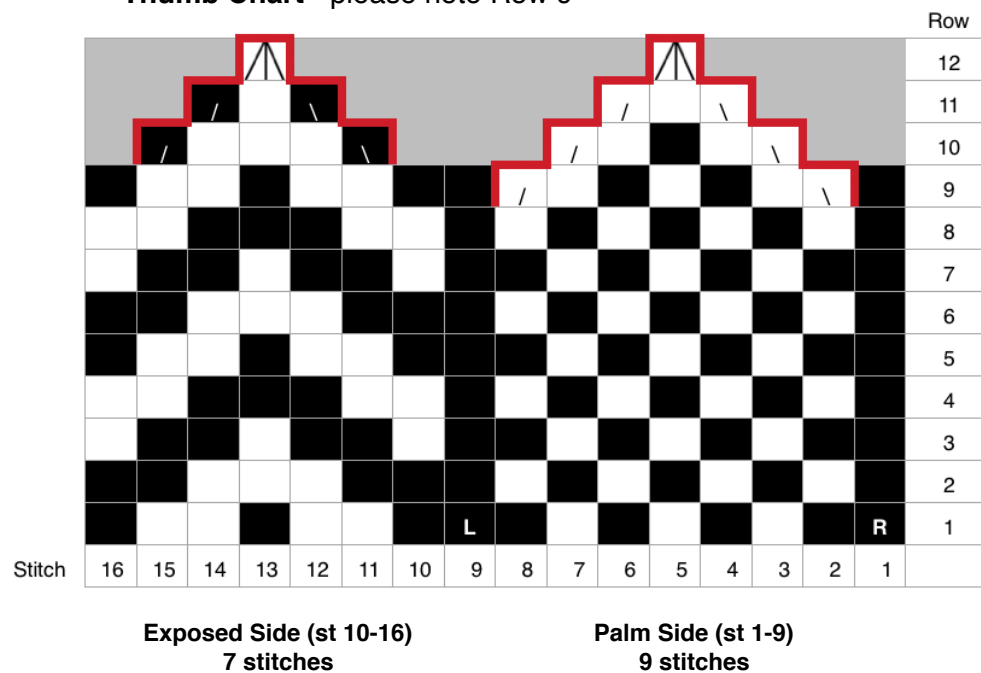
## Wrist Chart - long
















## Wrist Chart - short



## Thumb Chart - please note Row 9

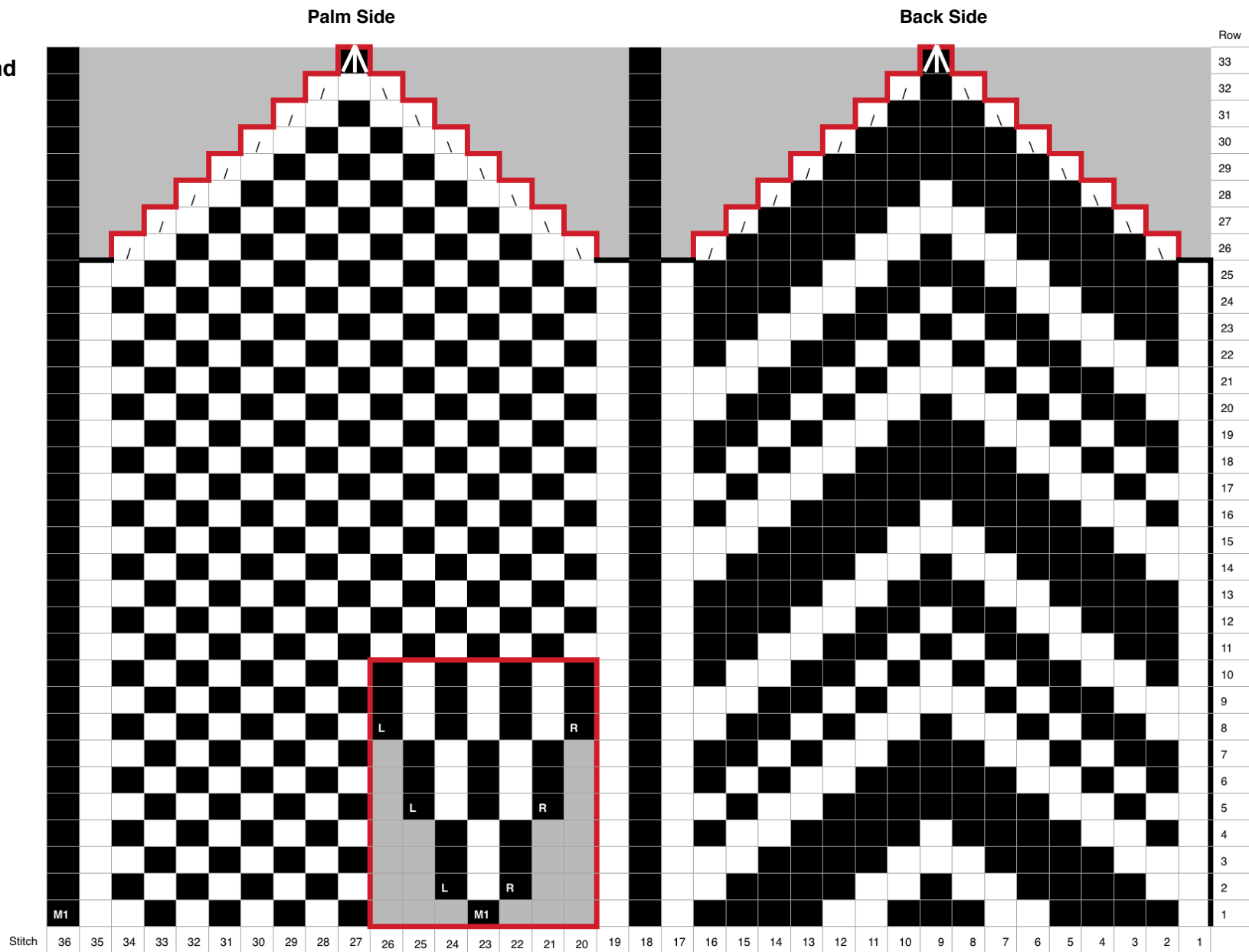


## Chart Legends

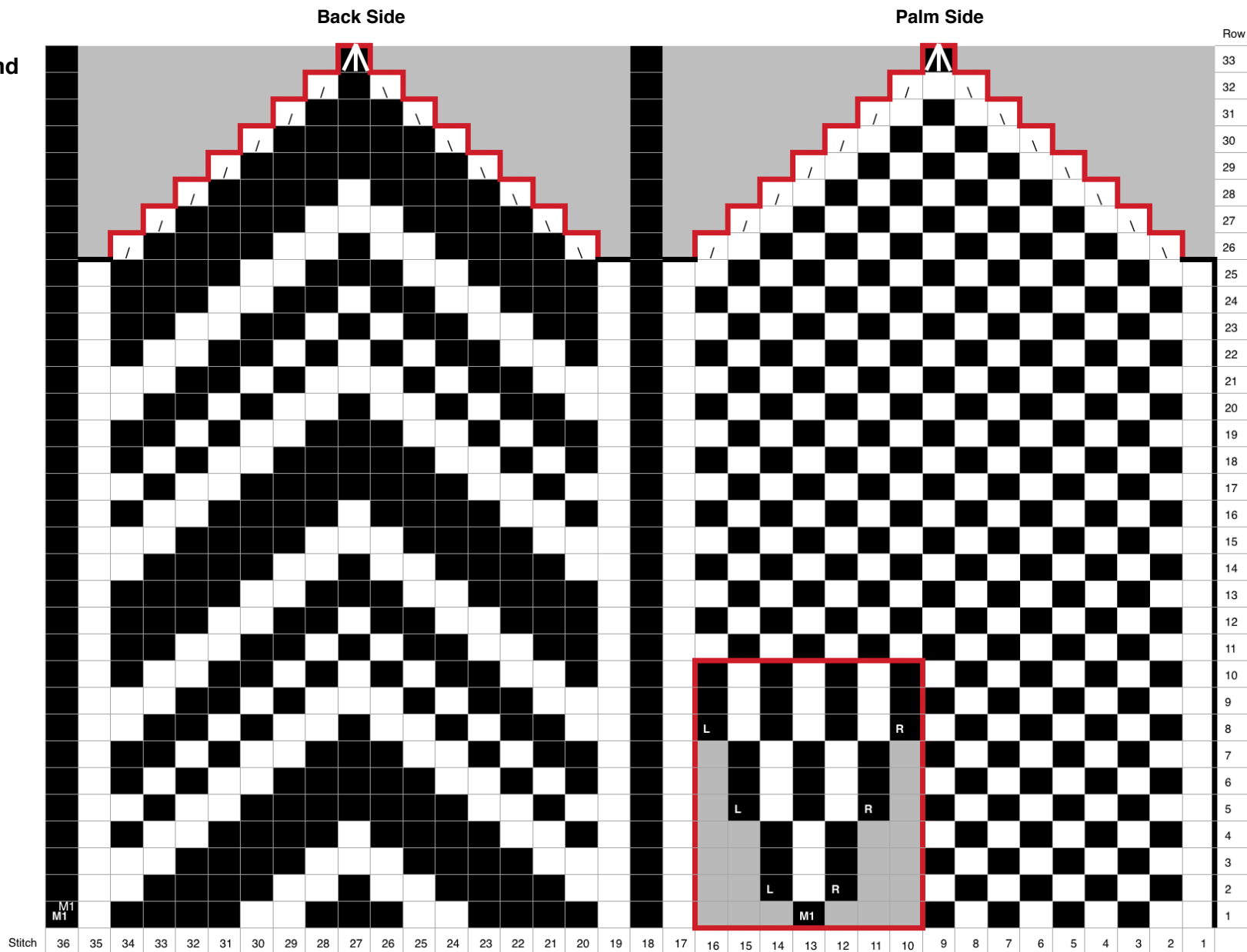
	main colour		* purl (all other st are knit)
	contrast colour		<b>R</b> make one right
	non-existent stitches		<b>L</b> make one left
	stitches of the thumb gusset		 ssk
			 k2tog
			 see page 1



# Right Hand Chart



# Left Hand Chart





Thank you for choosing my pattern! Wishing you all the best in your knitting.

Anna Daku @the.bluebird.box

<https://www.ravelry.com/designers/anna-daku>

the bluebird box

