

Fishbone Mittens

by Marit, alias Yarn Jungle

Size: Women's small/medium (width: 10 cm (4")); length without ribbed cuff: 19 cm (7.5"); ribbed cuff: 7.5 cm (3").

Materials:

- Yarn: Rauma 2-ply Gammelserie (100% wool, 160 m/50 g) in #436, black (main colour, MC) and #401, bone white (contrast colour, CC): one skein each, or two skeins in contrasting colours of an equivalent fingering weight yarn.
- Set of 5 double pointed needles, 2.5 mm (US 1½).
- A bit of scrap yarn or a stitch holder
- Tapestry needle

Gauge: 17 stitches and 17 rounds = 5 by 5 cm (2 by 2").



Make sure to work all charts in the opposite direction for the second mitten, to reverse the pattern and the thumb placement.

Tips for knitting stranded colourwork:

- ❖ *If you have to strand yarn across 5 or more stitches, wrap the unused yarn in the back of the work.*
- ❖ *Hold the two different yarn threads consistently the same way while knitting. The contrast colour should lie under the main colour thread all the way. This makes the colour pattern look better.*

Cuff

Loosely cast on 64 stitches in main colour. Divide the stitches onto four needles and join to work in the round, being careful not to twist the stitches.

Knit 2, purl 2 until cuff measures 7.5 cm (3").

Work cuff chart; decrease 4 stitches evenly in the first round (60 stitches in total). Remember to read the charts in the opposite direction for the second mitten.

Hand

Work the hand according to the main chart. The thumb gusset will take shape as you make the increases. When the thumb gusset is complete, slip the 15 thumb stitches, as indicated by the chart, onto scrap yarn or a stitch holder. Cast on 13 new stitches over the thumb hole using the backward loop method. Continue with the main chart, decreasing stitches as shown. When you have come to the end of the chart, cut the yarn, leaving a long tail of both threads. Using a tapestry needle, pull the threads through all remaining stitches, pull tight and weave in the ends.

Thumb

Remove the scrap yarn or yarn holder and put the thumb stitches on 2 double pointed needles. Pick up 1 stitch from the side of the thumb hole, pick up 13 stitches from the stitches you cast on over the thumb hole, and pick up 1 more stitch from the other side of the thumb hole – 30 stitches in total. (If you want, you can pick up more than 1 stitch from the sides. Just remember to decrease these extra stitches in the next round).

Work the thumb chart, continuing the palm pattern for the inside of the thumb, and the fish on the outside. Note that you will have to make two extra stitches (marked with +) in the first round. Make the thumb tip decreases as shown in the chart, and finish the thumb in the same manner as the mitten tip.



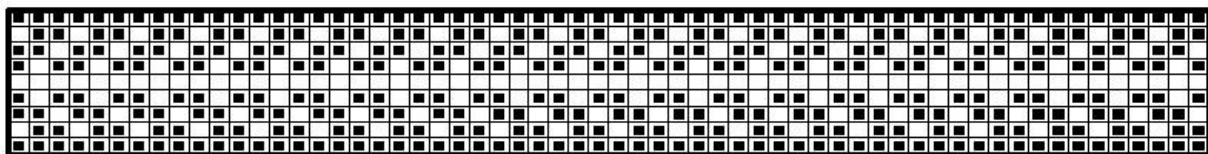
Finishing

Use the tapestry needle to weave in all loose ends on the wrong side. If you see a small hole where the thumb was picked up, sew it closed using the yarn tail. Steam block lightly under a wet cloth.

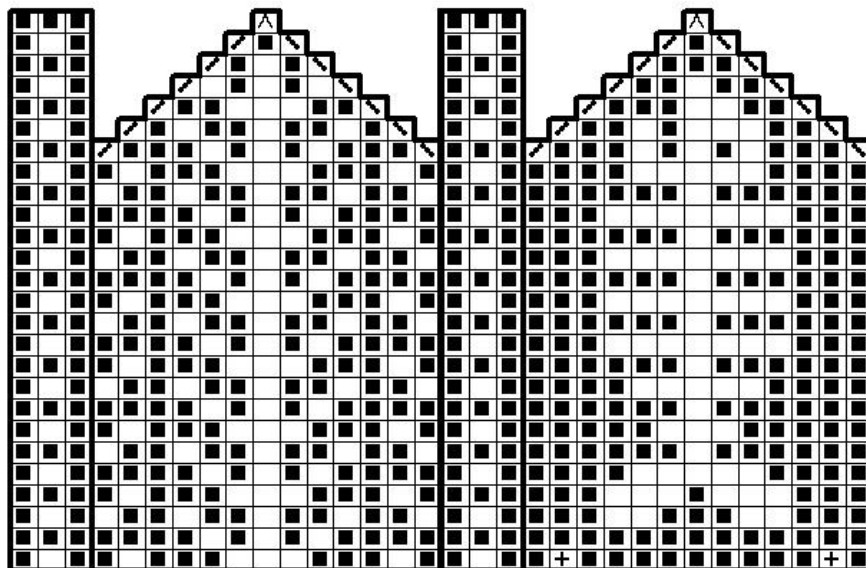
Symbols

■	Main colour	^	Slip two stitches together as if to knit, knit 1, pass slipped stitch over
□	Contrast colour	+	Make 1 stitch
/	Knit 2 together	∩	Put this stitch on scrap yarn or stitch holder
\	Slip 1, knit 1, pass slipped stitch over		

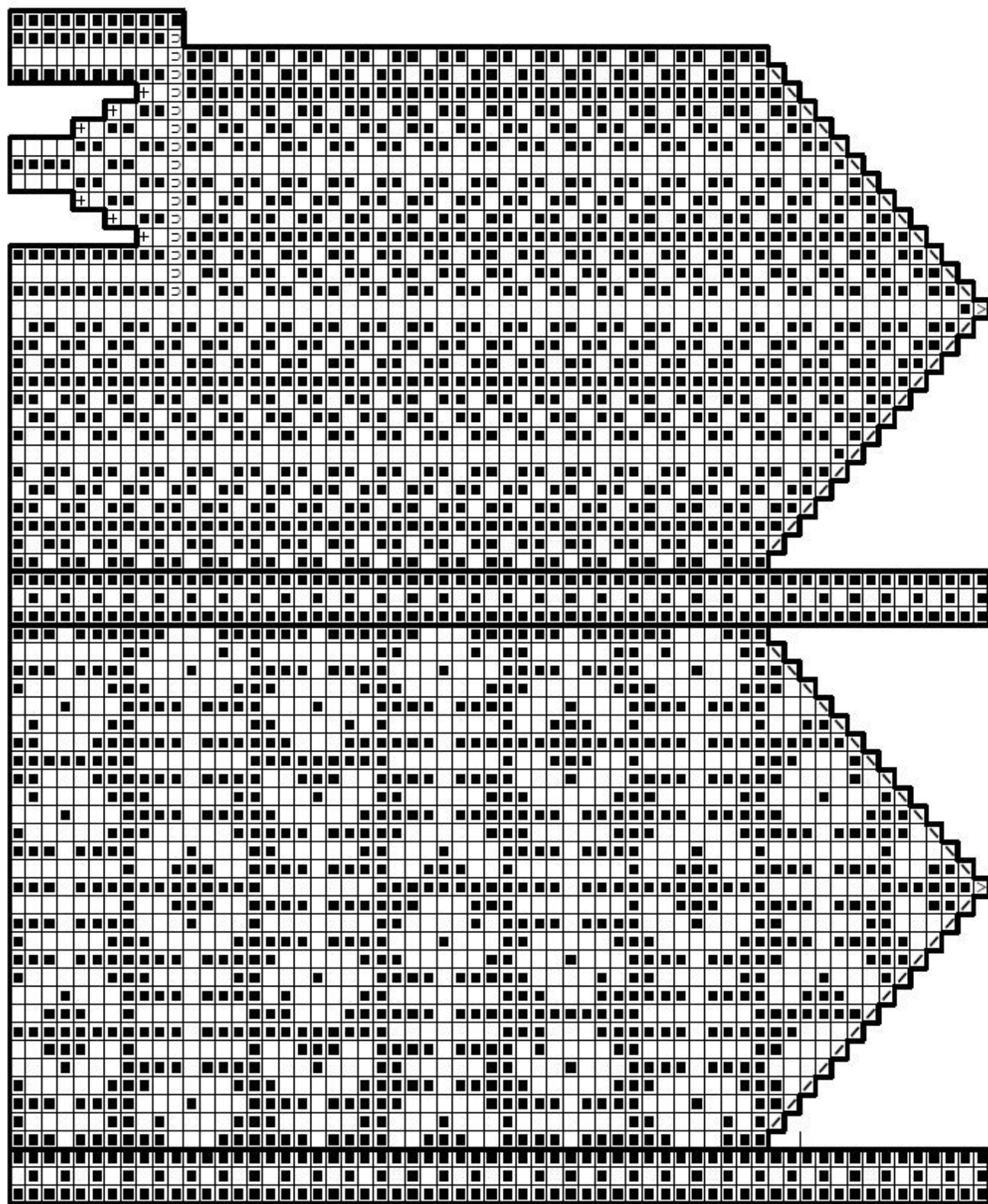
Cuff chart



Thumb chart



Main chart



© 2009, 2014 Marit, Yarn Jungle. All rights reserved.

This pattern is for personal use only. Do not reproduce.