

Favorite Mittens



Favorite Mittens use five colors to make interesting stripes. The front and back of the mitten are the same thus there is no designated left or right. Make 2 mittens and you have a pair!

One size: medium

Finished measurements: from cuff edge to fingertips is 12 ¼ inches, circumference at knuckles is 7 inches.

Materials

Knit Picks Palette (fingerling weight 100% wool yarn)

Asphalt Heather	92 yds
Autumn Heather	46 yds
Sagebrush	56 yds
Tidepool Heather	25 yds
Finnley Heather	66 yds

Supplies

Size 2 dpns.

Yarn needle. Stitch markers. Scrap yarn.

Gauge

Gauge with size 2 needle is: 7 sts per inch in the round, in pattern.

Instruction

Using the color Asphalt Heather and size 2 needles C.O. 56 sts. PM and join in the round.

Row 1: k all sts

Row 2: p all sts

Row 3: k all sts

Repeat rows 2 and 3 one time.

Start Chart A, knitting it twice per round. Once Chart A is complete you will move on to the body of the mitten plus the thumb gusset.

Now you will work the charts in this order: Chart B, then Chart C, then Chart B again. To do this, start on line 1 of Chart B and knit 28 sts, PM. Knit line 1 of Chart C, PM. Knit line 1 of Chart B one more time. Continue on to line 2 of the charts. Work in this order until you reach line 19.

A note about knitting the gusset: notice that the increases are made on the odd lines. On line 1 you have 1 stitch of the gusset, on line 3 there are 3 stitches, on line 5 there are 5 stitches, and so on.

After 19 rows of working Chart B and Chart C, put 19 sts of the thumb gusset on scrap yarn, and continue with Chart B only, knitting twice per round. Once you are done with the charts, put the first 8 sts on one needle and the second 8 sts on a second needle and work these off with a kitchener stitch using the color Finnley Heather.

Thumb: place the 19 sts on size 2 dpns. Working from Chart C, start on line 20. Pick up 1 stitch from the body of the mitten as marked on the chart. Once you have worked line 20 you will have 20 sts on your needles. Work in the round until the end of the chart.

To close the thumb: use the color Asphalt Heather, k2tog all around the last row. With the last 10 sts, pull the yarn through with a yarn needle, tie off and pull yarn to the inside of thumb.

Make second mitten the same as the first.

Weave in all ends and block.

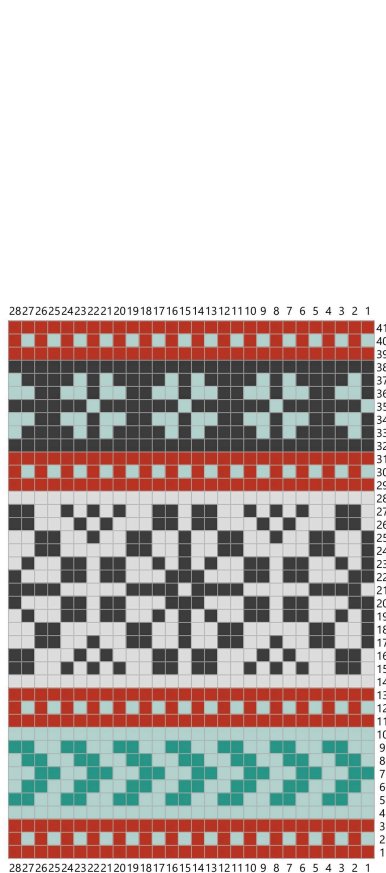


Chart A - Cuff

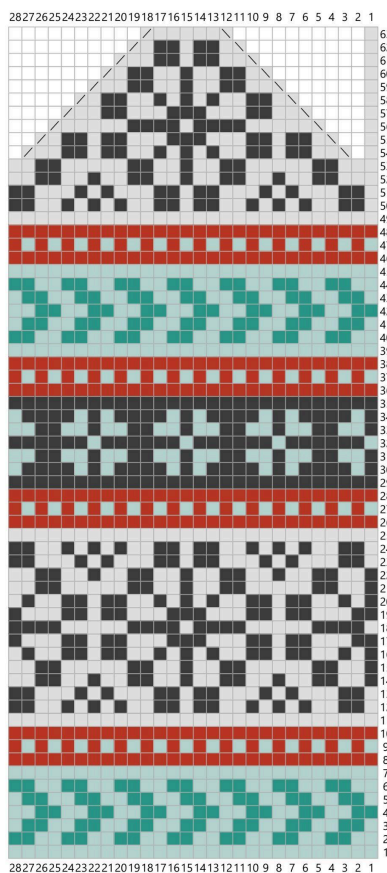


Chart B - Mitten Body

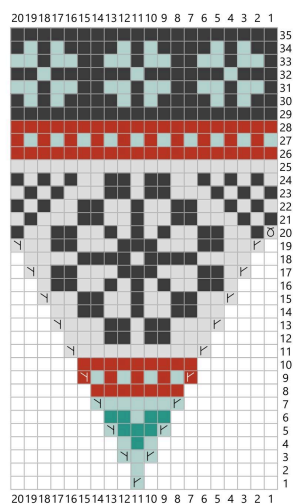


Chart C - Gusset/Thumb

Key

- Asphalt Heather
- Autumn heather
- Sagebrush
- Tidepool Heather
- Finnley Heather
- no stitch
- m1 right leaning
- m1 left leaning
- pick up st
- ssk
- k2tog