

# FADED GLASS INFINITY COWL

BY SYDNEY GERZYMISCH

A cozy double layer cowl with an intricate yet simple colour work design that is reminiscent of stained glass windows. The design is meant to be worked with a faded array of contrast colours but it's a super customizable design overall.

## Materials

Fingering Weight in Black (Main Colour)

250 yards (sample used Berroco Ultra Wool Fine)

Various Colours of Fingering Weight (Contrast Colour)

Sample uses 14 colours at 35 yards each of Tangled Poets Hand Dyed

Stitch markers (one in a different colour for BOR) and finishing notions (darning needle, pins, etc.)

3.75mm, 16 inch circular needle

(I used shorter interchangeable tips to make it easier but use whatever is most comfortable for you since it's a bit of a weird circumference to work honestly)

## Gauge & Size

Pattern is written to make a single loop cowl, 9-10" wide x 31" circumference

Knit as a tube and joined to make one single loop cowl. You can choose to make it even longer to wrap twice (just continue chart repeats), keep in mind that will effect yarn usage overall.

3.75mm is a general recommendation and the size I used. Choose a needle size that creates a nice even fabric even when working the chart.

Using the main colour, cast on 96 stitches, placing a marker every 24 stitches (this is optional but makes working the chart repeats easier).

Place B0R marker and join to knit in the round.

Begin the colour work chart on page 3. This is a condensed version of the overall design that you will repeat. See page 4 for a better understanding of the fade process.

If you need a more custom visual for your colours, check out the “print and fill” black and white chart on page 5!

Repeat chart 7 times, fading contrast colours as you go.

Cast off all stitches loosely.

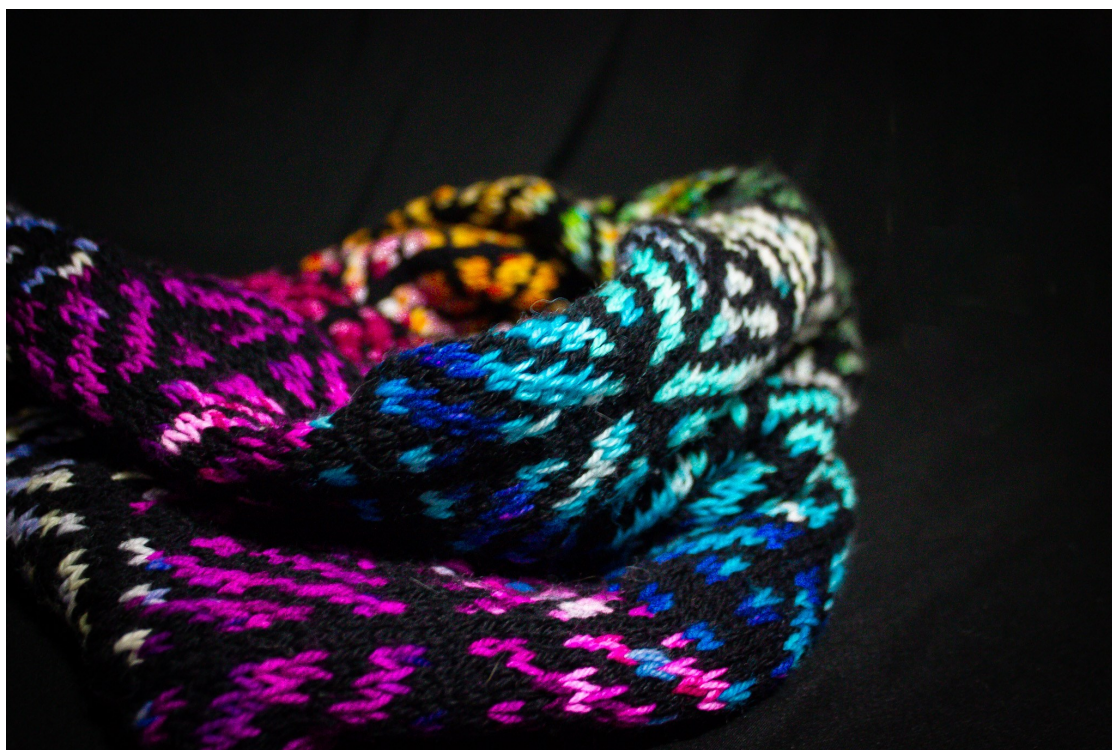
At this point, all your ends should just be on the inside and you don't need to worry about them.

You can block the cowl before or after joining the ends but I personally prefer blocking it beforehand because it makes everything even width and easier to join.

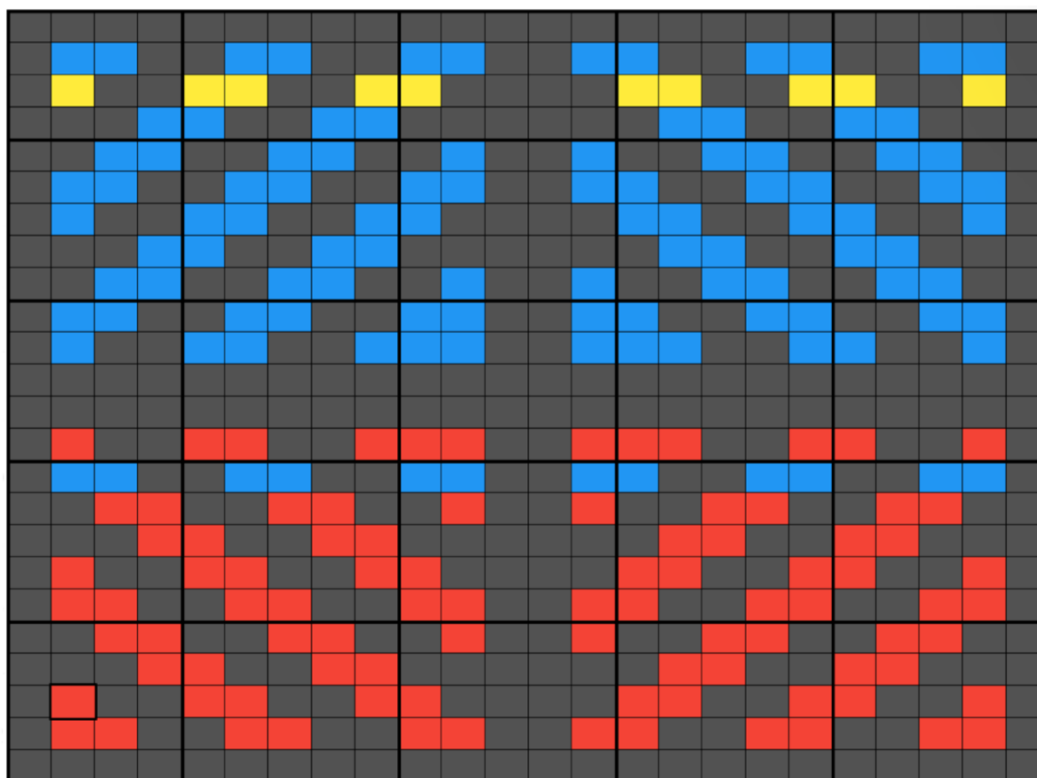
Using your main colour, sew the ends of your cowl together.\*\*

**\*\*Remember! Your squares/vertical lines need to line up when you join the ends so be mindful as you join!**

And that's it! Wear your cowl with pride and show off your hard work!



24 rows



24 sts

1



**MAIN COLOUR**

(I recommend solid black)



**CONTRAST COLOUR 1**



**CONTRAST COLOUR 2**

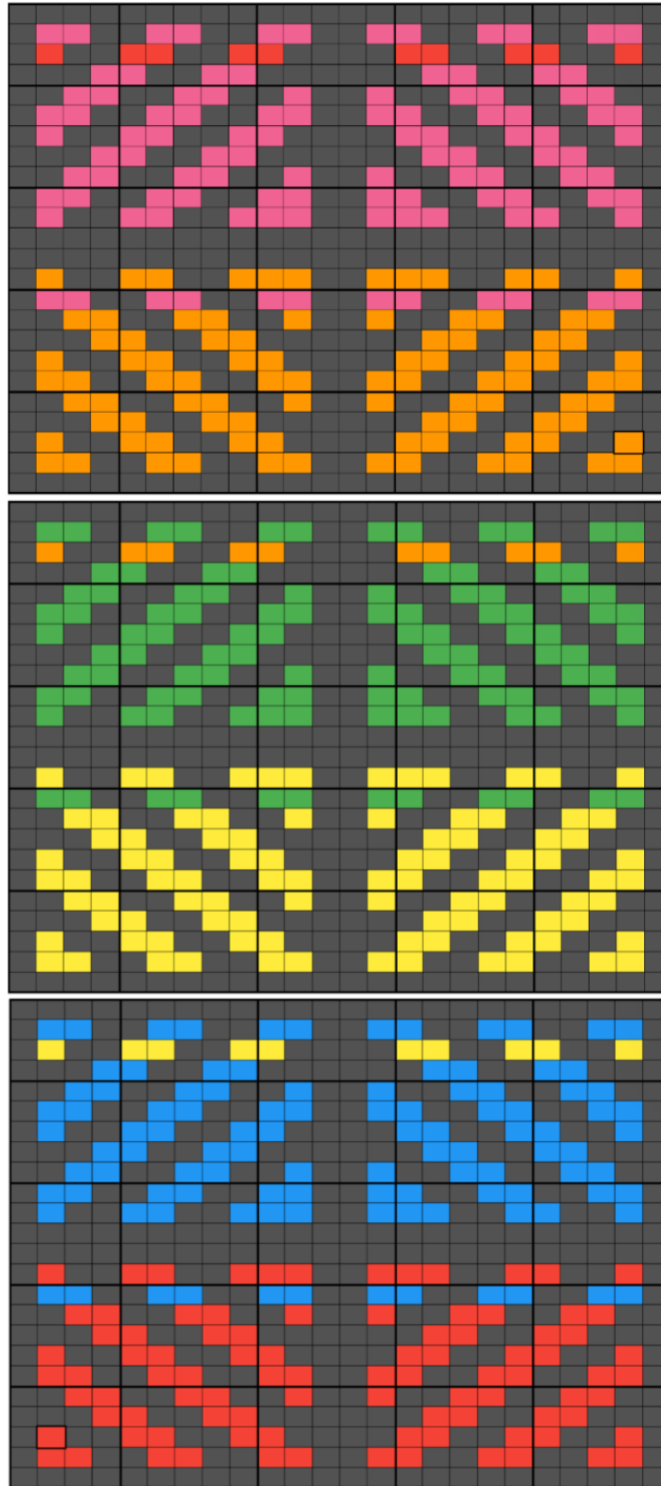


**CONTRAST COLOUR 3**

THE NUMBER IS COMPLETELY IRRELEVANT HERE AS YOU'LL BE FADING A SERIES OF COLOURS OVER THE WHOLE COWL

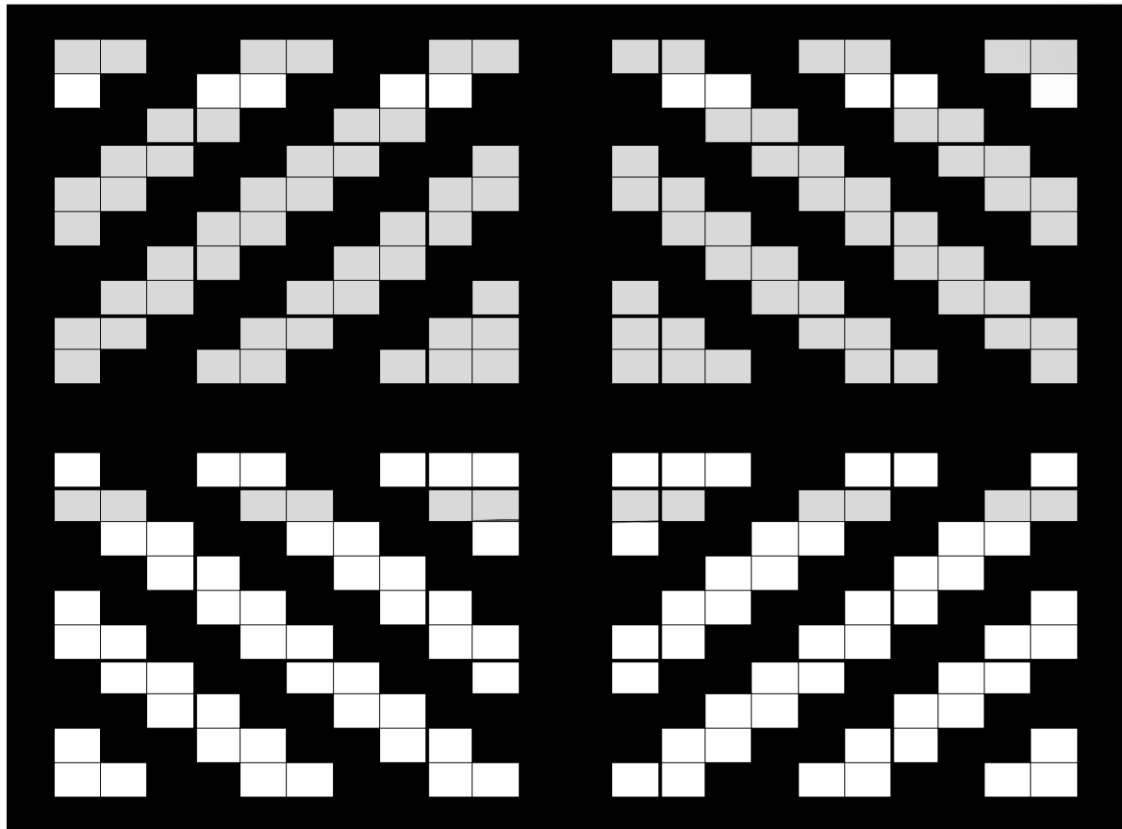
THE IMPORTANT THING IS WHERE THE COLOURS ARE PLACED. START WITH ONE CONTRAST COLOUR AND THEN ALTERNATE IT WITH YOUR NEXT CC YOU PLAN TO USE AS SHOWN IN ROWS 10-11. THEN BREAK OFF YOUR FIRST CC. KNIT ONLY YOUR NEW CC UNTIL ROWS 22-23 WHERE YOU'LL FADE IN AN ENTIRELY NEW CC IN THE SAME WAY AS BEFORE.

SO AS YOU CONTINUE THROUGH REPEATS MAKE SURE YOU KEEP THAT FLOW AND FADE EFFECT GOING AS THAT'S WHAT LENDS TO THE OVERALL EFFECT. I WOULD ALSO RECOMMEND PICKING A STARTING AND FINISHING CC THAT WILL FADE INTO EACH OTHER, THIS HELPS AVOID A STARK LINE AND RUINING YOUR FADE EFFECT WHEN YOU SEAM THE ENDS.



**A BETTER VISUAL OF HOW YOU WOULD BE CHANGING YOUR CONTRAST COLOURS AND FADING THEM OVER THE CHART REPEATS**

# PRINT AND FILL VERSION



★ DON'T FORGET YOUR FADE ROWS!