



## EVELYN HAT

DESIGN BY

ISABELL KRAEMER

## SKILL LEVEL

Intermediate

## SIZES

One size

## FINISHED MEASUREMENTS

From brim to top: 10¼" (26 cm)

Circumference at brim: 21¼" (54 cm)

## MATERIALS

1 Hank AMANO ECO PUNA (100g),

#9001 Nazca Desert (MC)

1 Hank AMANO ECO PUNA (100g),

#9003 Puna (CC)

20" Length Circular needle, US 6 (4 mm), or desired length to work small circumferences in the round.

Double pointed needles (dpns), US 6 (4 mm)

20" Length Circular needle, US 4 (3.5 mm), or desired length to work small circumferences in the round.

Stitch markers

Tapestry needle

## GAUGE

22.5 sts = 4" (10.2 cm); 29 rnds = 4" (10.2 cm) in St st

TO SAVE TIME, TAKE TIME TO CHECK GAUGE

Find this yarn

amanoyarns.com

info@amanoyarns.com



**NOTE**

This hat is knit from the bottom up, in the round. The turned hem gives your ears a bit more protection from the cold and keeps the focus on the colorwork pattern. Stranded colorwork pattern is charted. Size can be increased/ decreased by using larger/ smaller needles. More slouch can be added to crown by adding more rounds in MC after finishing the colorwork.

**STITCH GLOSSARY**

**CC:** Contrast color

**MC:** Main color

**HAT**

With CC (#9003) and larger circular needle, using the long tail cast on, CO 126 sts. Join, mark for beg of rnd and carry marker up. Be careful not to twist stitches.

Change to smaller circular needle.

Knit 5 rounds. Change to MC (#9001) and knit 1 round.

**Next rnd (turning rnd):** Purl to end.

Change to larger circular needle and knit 1 round.

Work rnds 1 to 31 from chart.

Chart is to be read from bottom to top and from right to left.

Continue in MC to end.

Work in St st in rounds until hat measures approx. 7" (18 cm) from turning rnd.

**Dec rnd:** SM, \*k19, k2tog; rep from \* around. (6 sts dec'd)  
Knit 2 rounds.

**Dec rnd:** SM, (k2tog, k26, ssk, PM) 3 times, k2tog, k26, ssk.  
(8 sts dec'd)

Knit 1 round.

**Note:** Change to dpns if necessary to accommodate the reducing number of stitches.

**Dec rnd:** \*SM, k2tog, knit to 2 sts before next marker, ssk;  
rep from \* around. (8 sts dec'd)

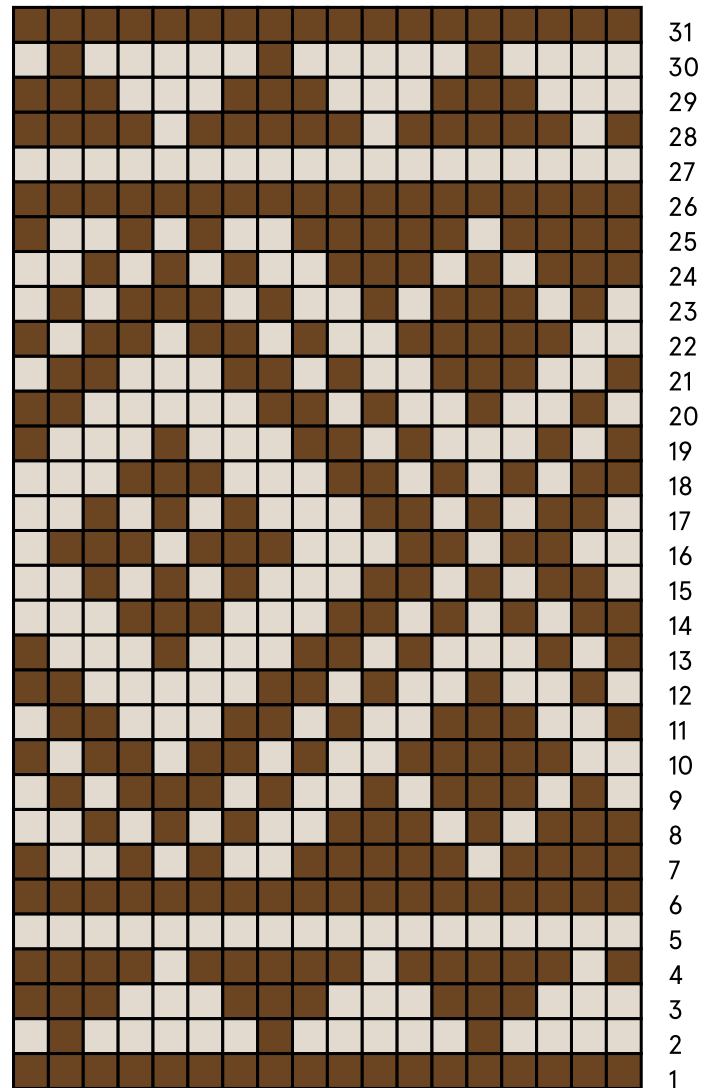
Rep this dec rnd every 2 rnds until you have 16 sts left.

**Dec rnd:** \*Remove marker, k2tog, ssk; rep from \* around. (8 sts dec'd)

Break yarn and pull through remaining stitches. Pull tight and weave in ends.

**FINISHING**

Fold brim at turning rnd and sew to inside.

**CHART KEY**

■ #9003    □ #9001

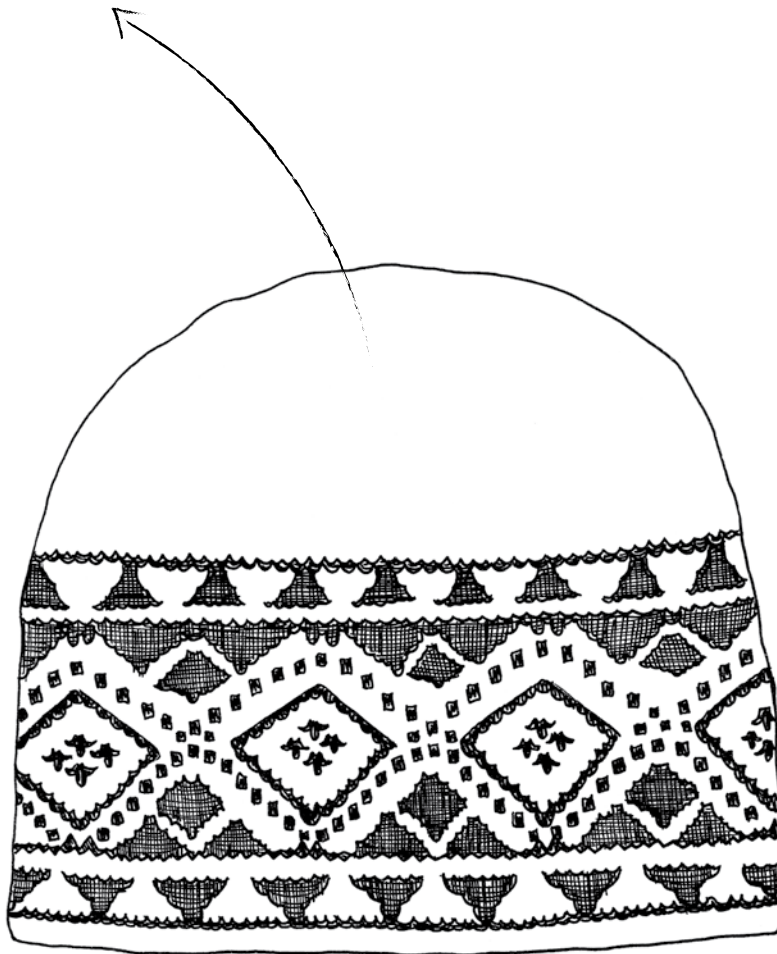
**CHART NOTES**

Work from right to left on every rnd.





EVELYN IS A COLOR WORK HAT WORKED WITH  
A DOUBLED HEM FOR ADDED WARMTH. ADD MORE  
SLOUCH BY KNITTING ADDITIONAL ROWS AFTER  
COLOR WORK AND BEFORE THE TOP SHAPING.



FALL / WINTER 17/18

[info@amanoyarns.com](mailto:info@amanoyarns.com)[amanoyarns.com](http://amanoyarns.com)[f](#) [i](#) [p](#) [r](#)



## ABBREVIATIONS &amp; TERMS

**beg:** beginning  
**BO:** bind off  
**CO:** cast on  
**cn:** cable needle  
**dec:** decrease  
**dpn:** double pointed needles  
**K:** knit  
**k tbl:** knit through the back loop(s)  
**k2tog:** Knit 2 stitches together  
**k3tog:** Knit 3 stitches together  
**LH:** left hand  
**M1:** Pick up horizontal strand between stitch just worked and next stitch from front to back, place on left hand needle, knit this stitch through the back (1 stitch increased).  
**M1L:** Work as for M1.  
**M1p:** Pick up horizontal strand between stitch just worked and next stitch from front to back, place on left hand needle, purl this stitch through the back (1 stitch increased).  
**M1R:** Pick up horizontal strand between stitch just worked and next stitch from back to front, place on left hand needle, knit this stitch through the front (1 stitch increased).  
**p:** purl  
**PM:** place marker  
**pssso:** pass slip stitch over knit stitch  
**p1d:** purl 1 st by going under the stitch below and working through both sts.  
**p2tog:** purl 2 stitches together  
**rep:** repeat  
**RH:** right hand  
**rnd(s):** round(s)  
**RS:** right side  
**sl:** slip  
**sl2tog-k1-pssso:** Slip 2 together (as if to k2tog), knit 1, pass the 2 slipped stitches over.  
**SM:** slip marker  
**ssk:** Slip 2 stitches knitwise, insert point of left hand needle through fronts of these 2 stitches and knit 2 together.  
**sssk:** Slip 3 stitches knitwise, insert point of left hand needle through fronts of these 3 stitches and knit 3 together.  
**st(s):** stitch(es)  
**TBL:** through back loop(s)  
**tog:** together  
**WS:** wrong side  
**wyib:** with yarn in back  
**wyif:** with yarn in front  
**yo:** yarn over  
**end on WS:** end having just completed a Wrong Side row.

**end on RS:** end having just completed a Right Side row.  
**STOCKINETTE ST (St st):** Knit 1 row, purl 1 row alternately when working on straight needles. The knit side is the right side of work. Knit EVERY round when working in the round on a circular needle.  
**Reverse St st (Rev St st):** Purl 1 row, knit 1 row alternately when working on straight needles. The purl side is the right side of the work. Purl EVERY round when working in the round on a circular needle.  
**GARTER ST:** Knit EVERY row when working on straight needles. Knit 1 round, purl 1 round when working on a circular needle.  
**K1, p1 Rib:** Knit 1 st, purl 1 st.  
**3 Needle Blind Off:** With RS together, hold in one hand two needles with the same number of sts on each. with third needle, knit tog 1 st from each needle, \*knit tog one st from each needle, pass first st over second to bind off, repeat from \*to last st.

