

# DOG AND BIRD PORCELAIN SCARF



KATHARINA KUNTZ

---

Anyone who knows my designs knows that I either make stacked characters or designs with lots of details. For this scarf I wanted to try something different. I was inspired by blue and white porcelain and the many small floral designs, that's why I specifically chose a light gray yarn to imitate the cracks in older porcelain. I actually wanted to create a more mature design, but I got distracted by all the cute poses of the two characters 🐼.

Thank you for buying my pattern and I hope you have fun knitting this cute scarf of these two best friends.

---

## You will need:

Fingering weight Yarn (2,5 – 3,5mm/ US 1 ½ - 4 Needle) around 430m/470yards per color.

## I used:

1 skein LISMI KNITS fingering Weight Yarn (<https://www.lismiknits.de>) in color Overcast, 500m/100g (547 yards/ 15 oz), (100% Virgin Wool/Superwash), or a similar weight and yardage in the fiber and color of your choice

2 skein Kunterbuntewolle fingering Weight Yarn (<https://www.etsy.com/de/shop/Kunterbuntewolle>) in color --- (no name for the color), 400m/100g (438 yards/ 15 oz), (75% Wool 25% polyamide), or a similar weight and yardage in the fiber and color of your choice

**Knitting needles:** size 0 (2mm)

**Gauge:** 32 stitches and 44 rows per 4 inches

**Finished dimensions:** 79 inches (200 cm) long, 4,3 inches (11 centimeters) wide

**Additional materials:** 3 Stitch markers, tapestry needle, yarn tension ring. Extra +2 spare 2mm needles (for binding of).

**Skill level:** Intermediate level



## General Notes:

As with most double-knit projects, the two sides mirror each other, with colors opposite. If you never knitted a double-knit this video could help you understand the technique more. I would start watching at 2:44 because we are going to use a different cast on method than in this video.

<https://www.youtube.com/watch?v=uQKZR-2TwCA&t=626s>

You can also see how the color change works and how to use the tension ring. Don't worry if you have never worked with one you are going to get a hang of it pretty fast. A Tipp from me, I wrapped the yarn twice around my pinky to keep the tension.

The Side with the light background is the Main side but you can do the opposite if you like it more. Side two is the back of the scarf, with a dark background. Whichever side is facing you on a particular row is the knit side, and each alternating back side stitch will be a purl. Stop knitting and check your work frequently – a wrong color stitch, a purl where a knit stitch should be, or the unused color laying across the wrong side of a stitch will stand out on the finished scarf. You can use duplicate stitch to cover an error that is many rows back or re knit new. But I recommend to duplicate stitch over the error if there are not too many mistakes. It's soooo difficult to get the loops on the needle again after unraveling it. I put a stitch marker every 10

stitches it helps a lot. Be sure to twist the yarn at the end/beginning a row – if you do not, the front and back of the scarf will separate. In the first Video I linked this is explained as well.

## Instructions:

Cast on 70 stitches with the invisible cast on method for double knitting. This Video explains is really well. It's the first Method of the four. <https://www.youtube.com/watch?v=2lWI2jlpMBM&t=200s>

After the cast on turn your piece and knit every odd stitch in Blue (Blue, or your color of choice), purl every even numbered stitch in Overcast (Light grey, or your color of choice). The charts show only one side of the two-sided project. Starting with Chart 1, follow the charts row by row (below). The two strands of yarn need to move back and forth together so that they stay sandwiched between the two layers of knitting when not being used to make stitches. If you don't keep them moving together you will end up with the 'wrong' color wrapped around the stitches, you have knitted – you will notice pretty quickly! Remember that when you have turned the work and are coming back along the row from left to right, what is shown on the chart for that row is the purl stitch. Knit the even numbered stitches, from 35 down to 2, in the opposite color, and purl the even numbered stitches, from 34 down to 1, in the chart color. When you turn back to the original side, knit in the chart color and purl with the second color. Always start from the bottom of the charts and work up.

## Bind Off:

Put the knit and purl stitches respectively on your separate needles. Now purl all the purl stitches on the back needle, one row. After cutting the main yarn, 4 times the lengths of the width of the scarf, take your tapestry needle and make an invisible bind off for double knitting. It is like the Kitchener stitch.

Video for the Bind of: <https://www.youtube.com/watch?v=8hAHV1O1aj0>

## Last but not least:

Weave in the ends and block your scarf.

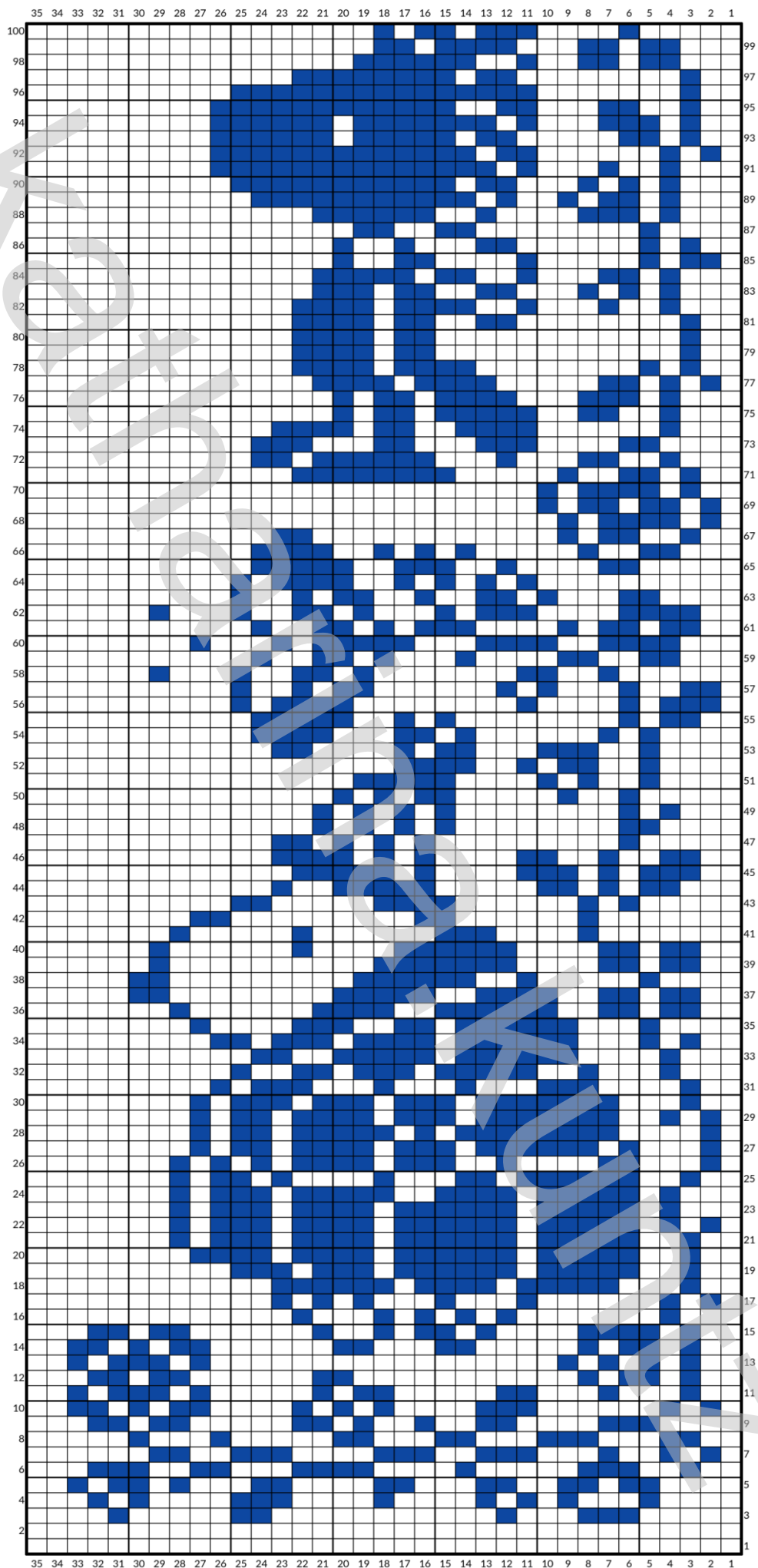
I hope you had a great time knitting this fun scarf. Send me a picture of it, please. I'd love to see it. I can't wait to see which colors you choose.

You can find me online at Instagram as [katharina.kuntz](https://www.instagram.com/katharina.kuntz)

This pattern was designed by Katharina Kuntz / February 2025. This pattern is for private use only. It is not allowed to copy, share, sell or redistribute this pattern. Neither is it allowed to sell products made with the help of this pattern.

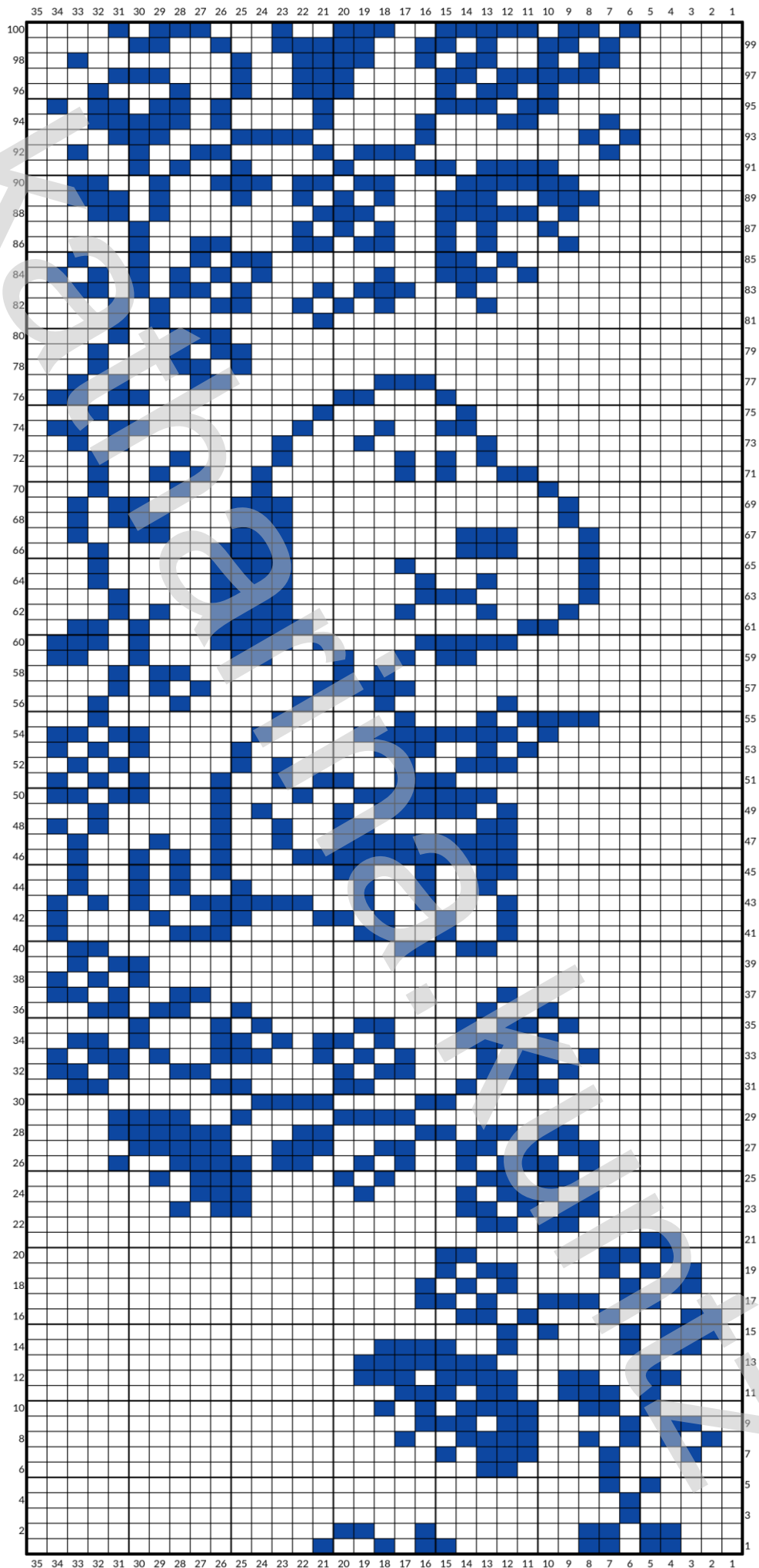


1.

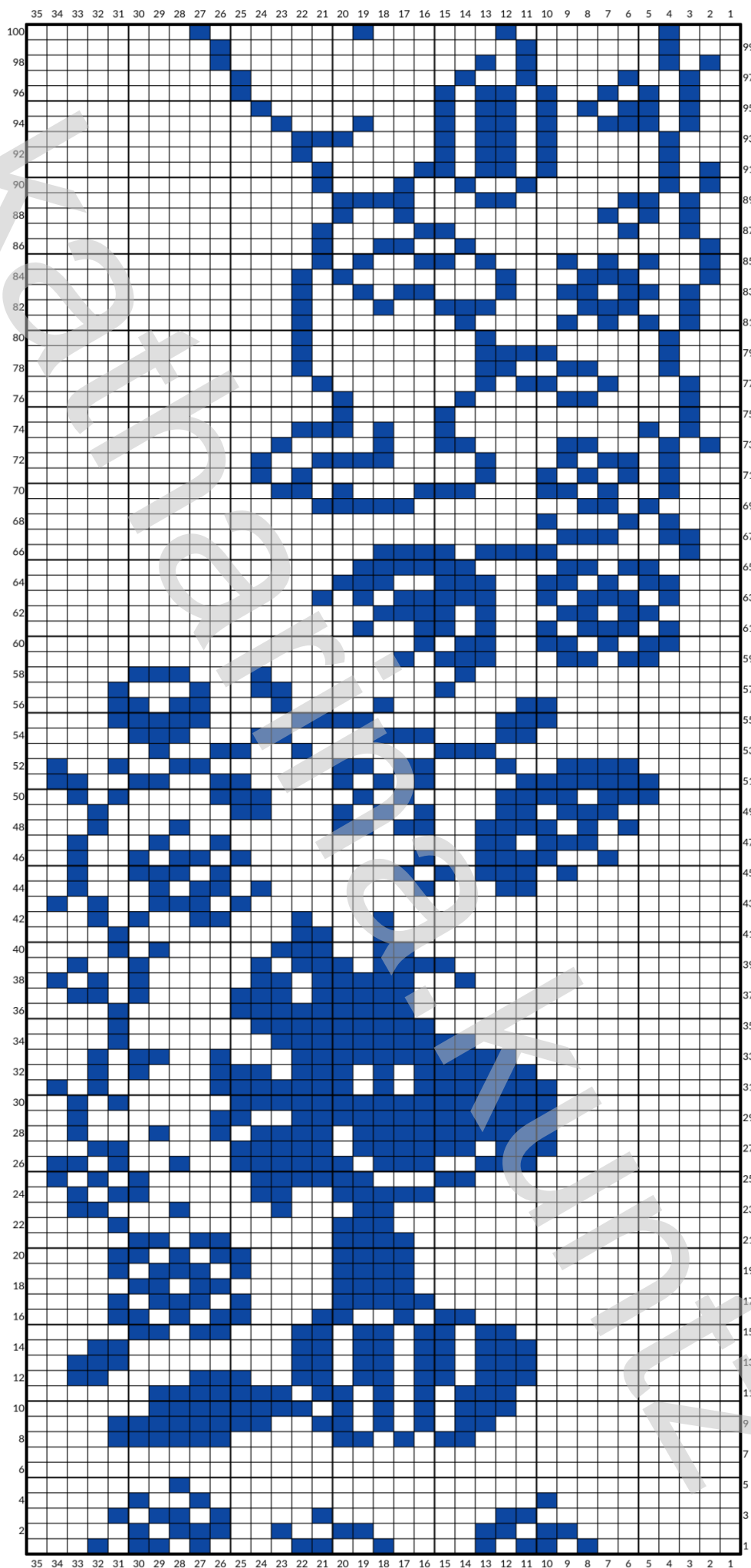




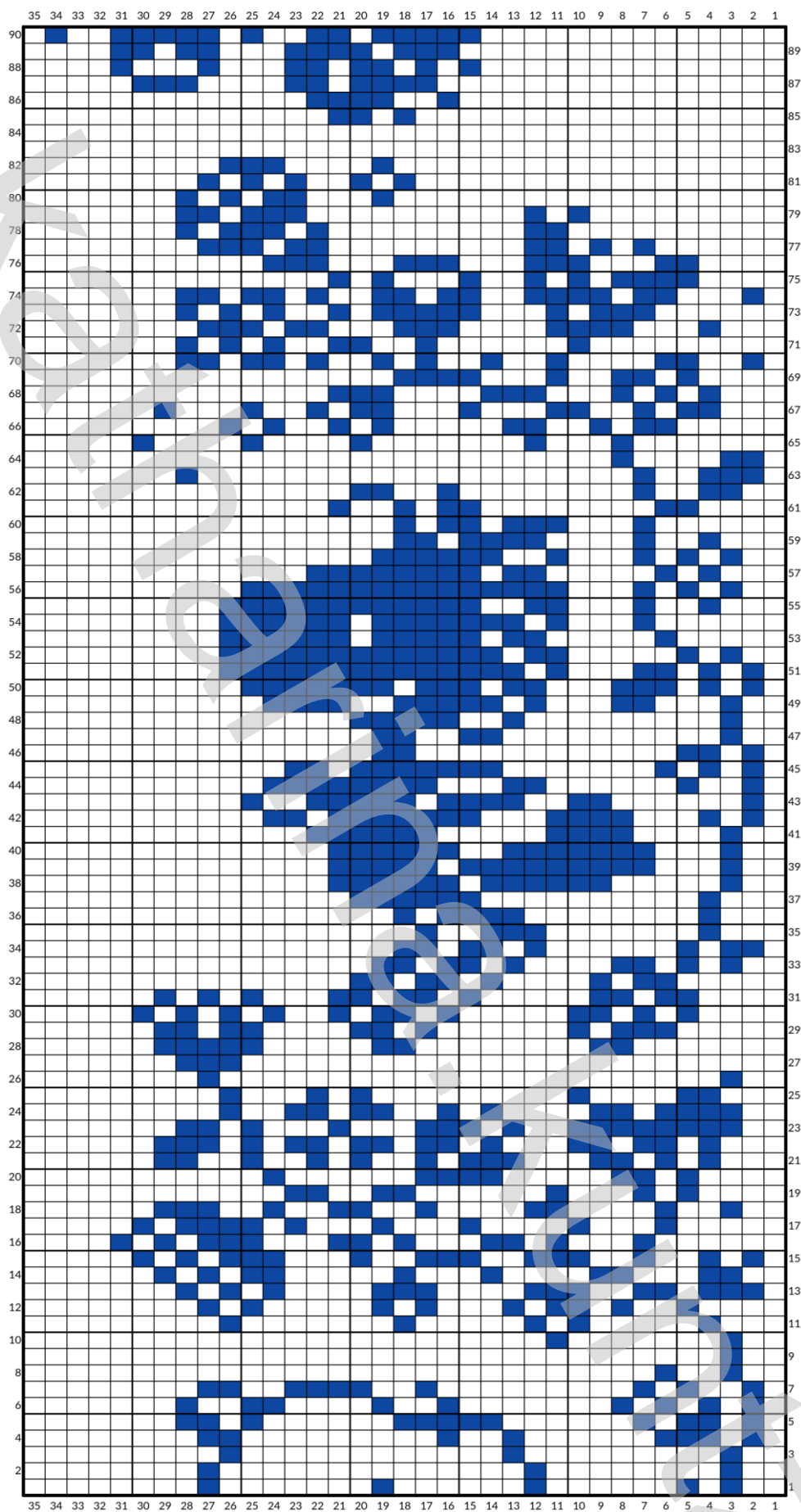
2.



3.

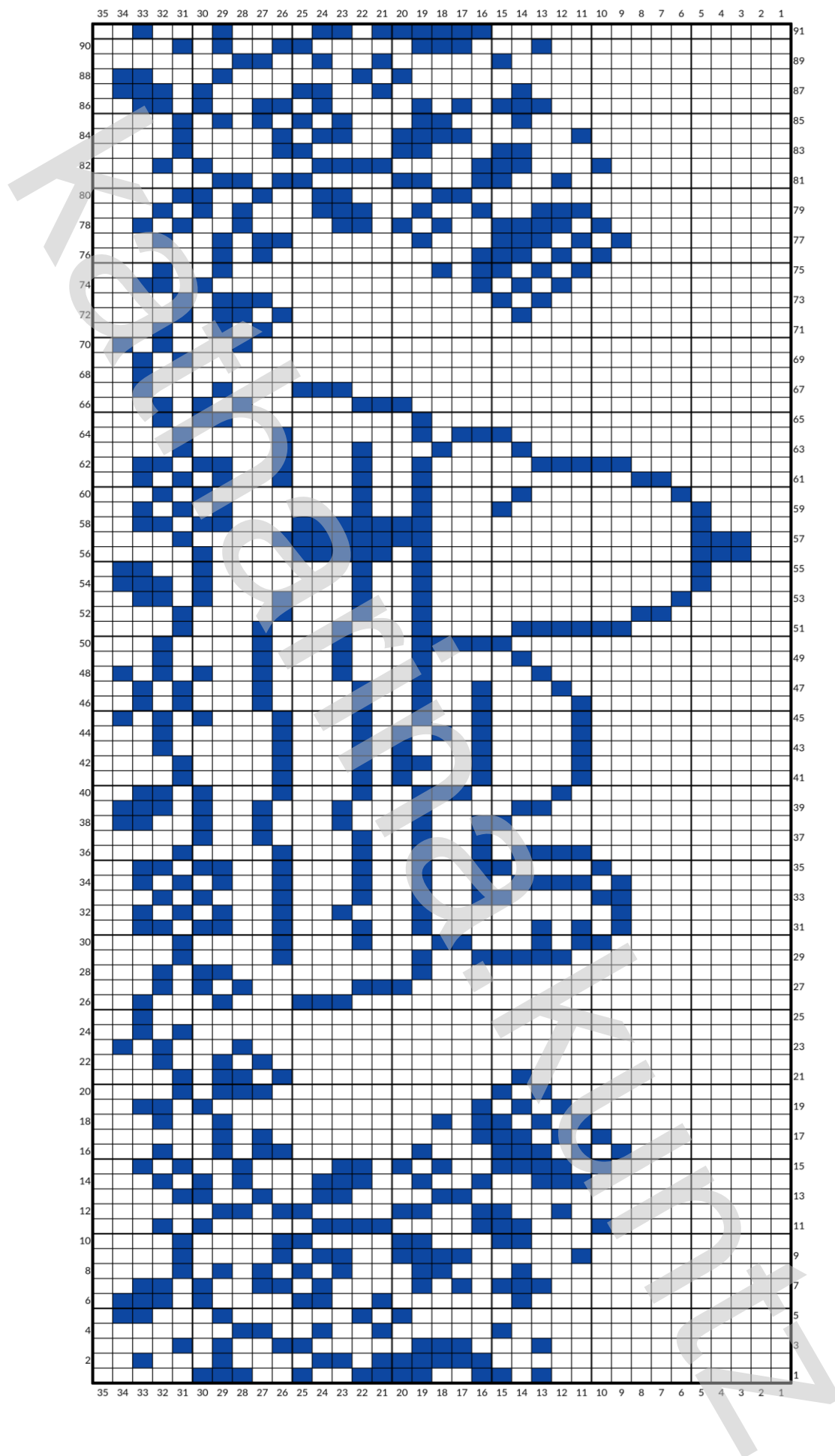


4.

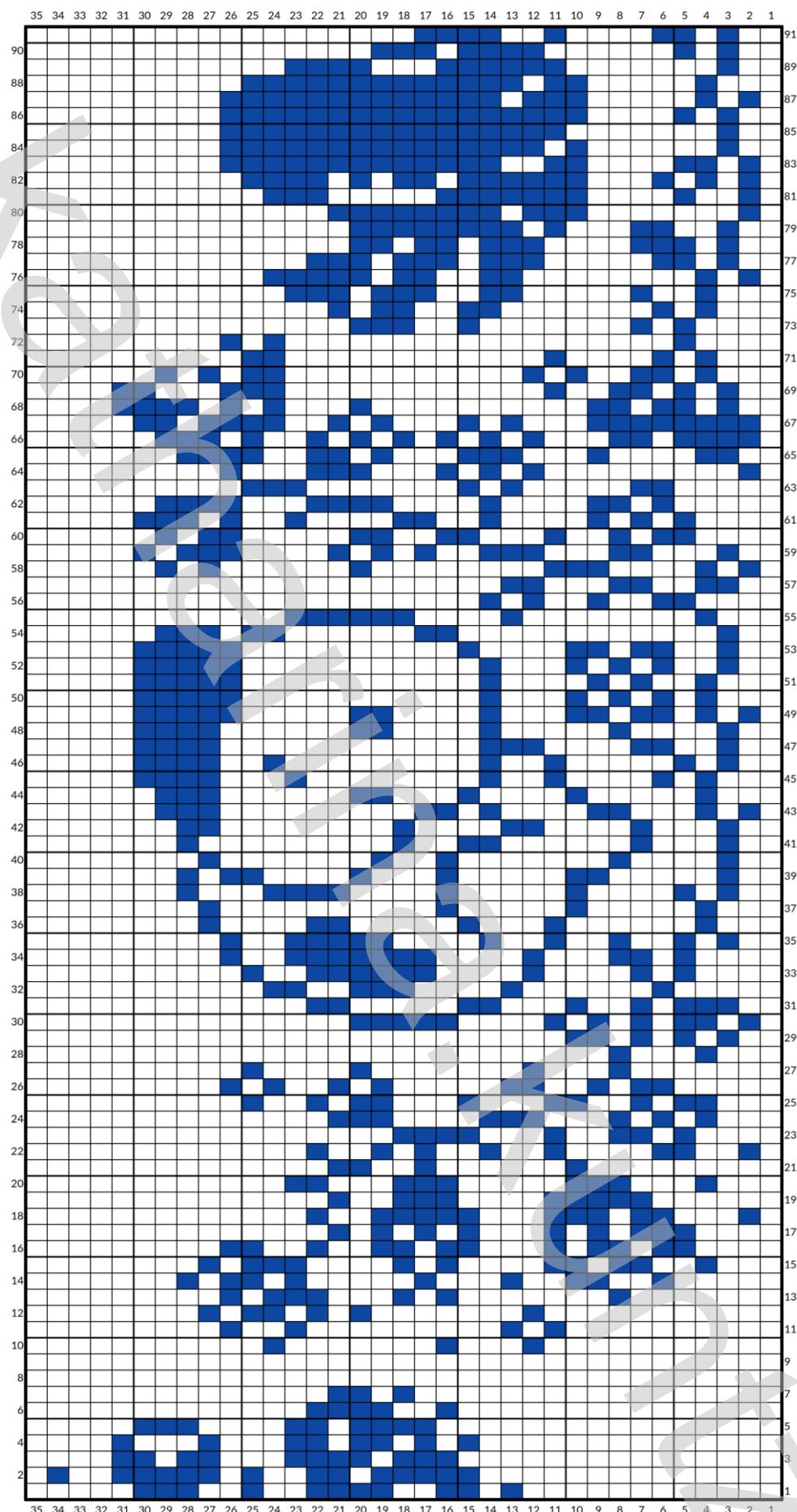




5.



6.

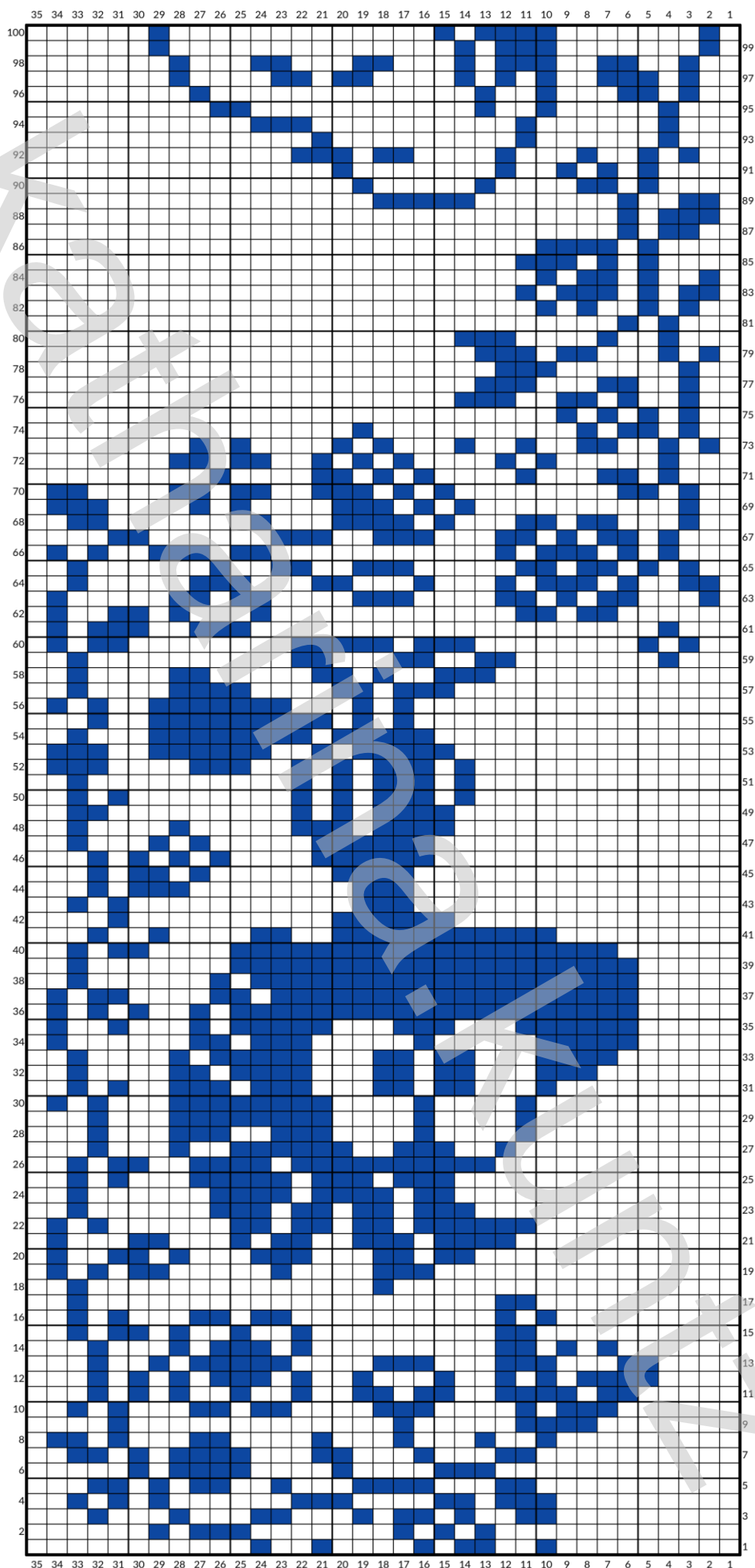


7.

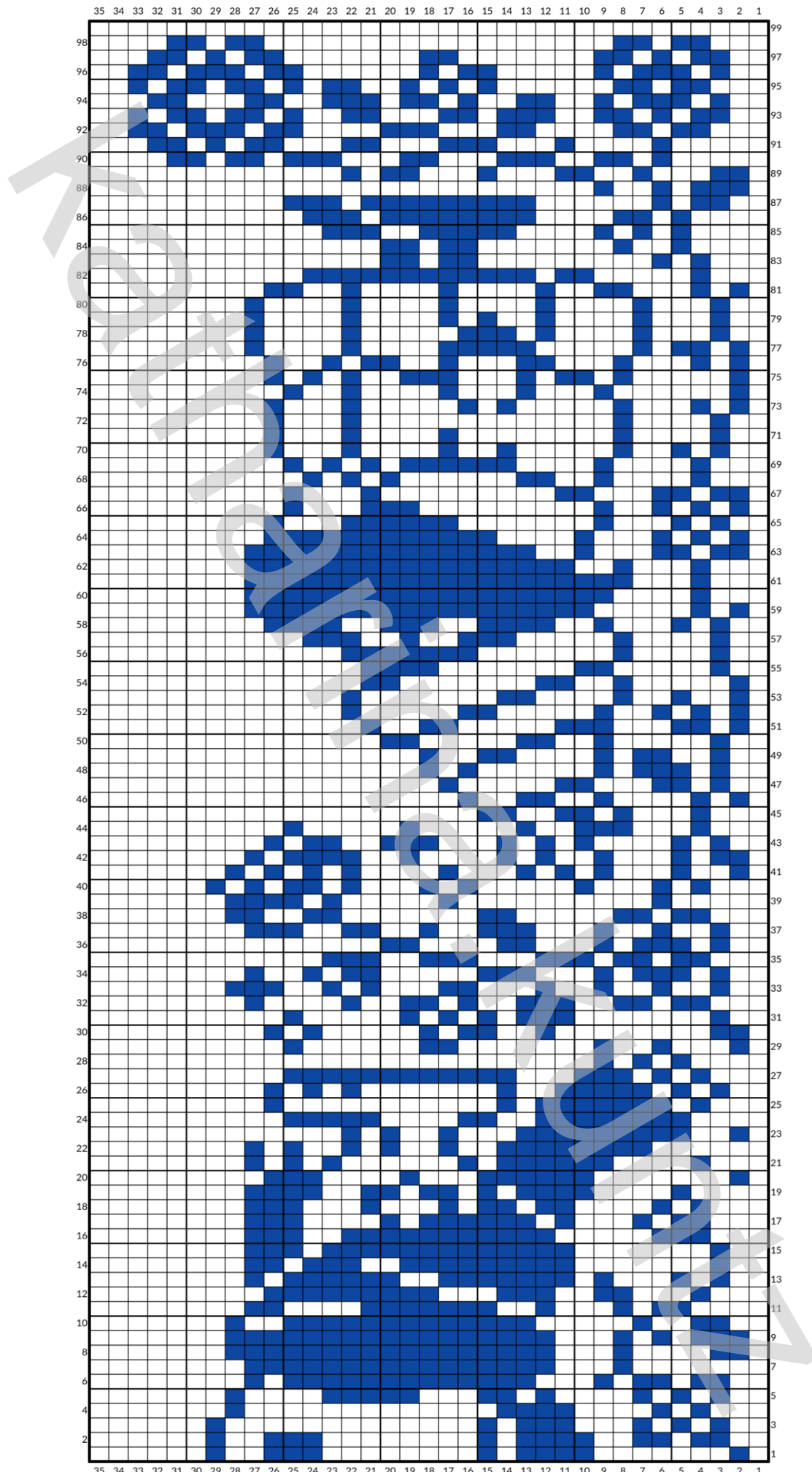




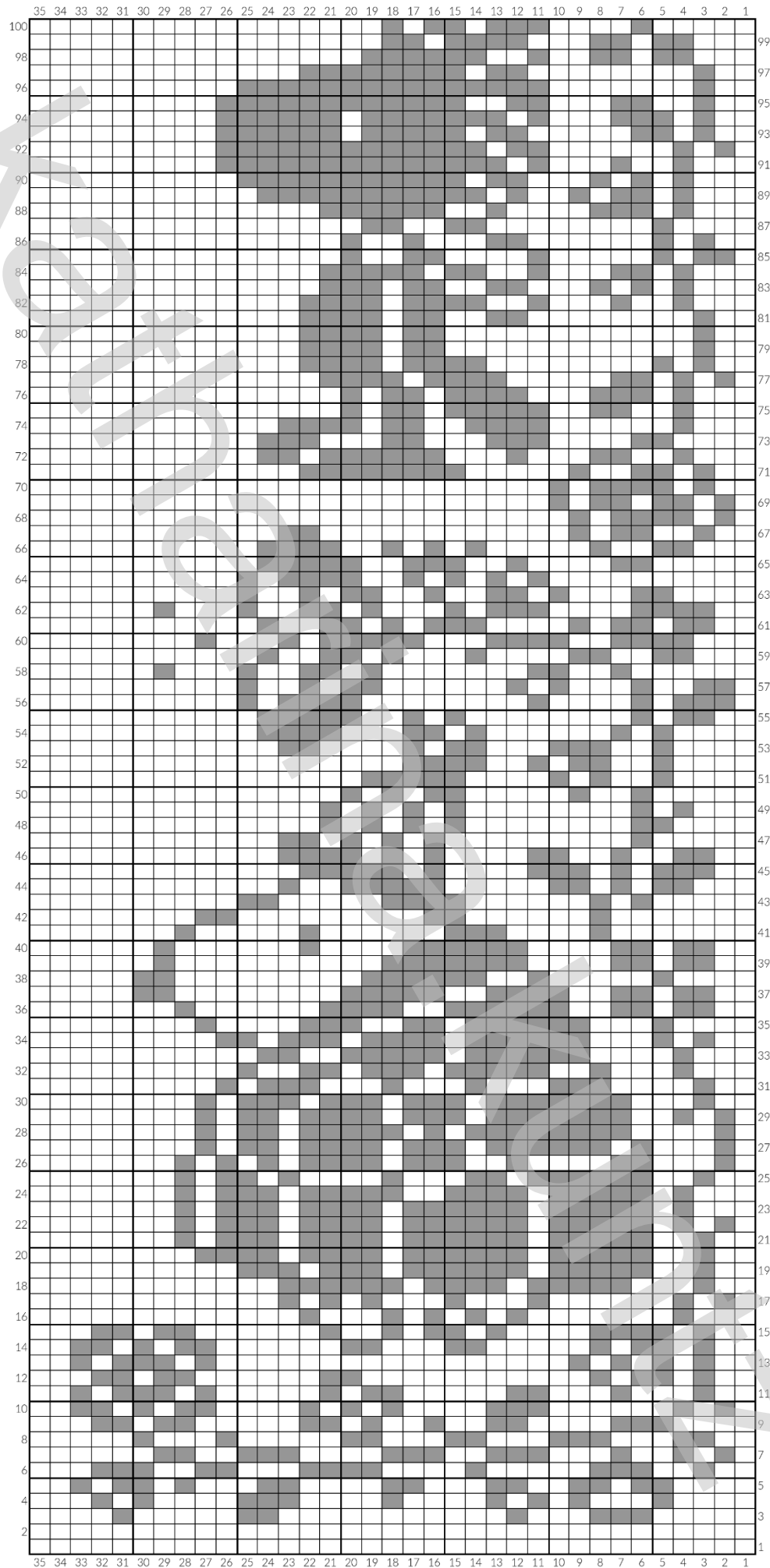
8.



9.

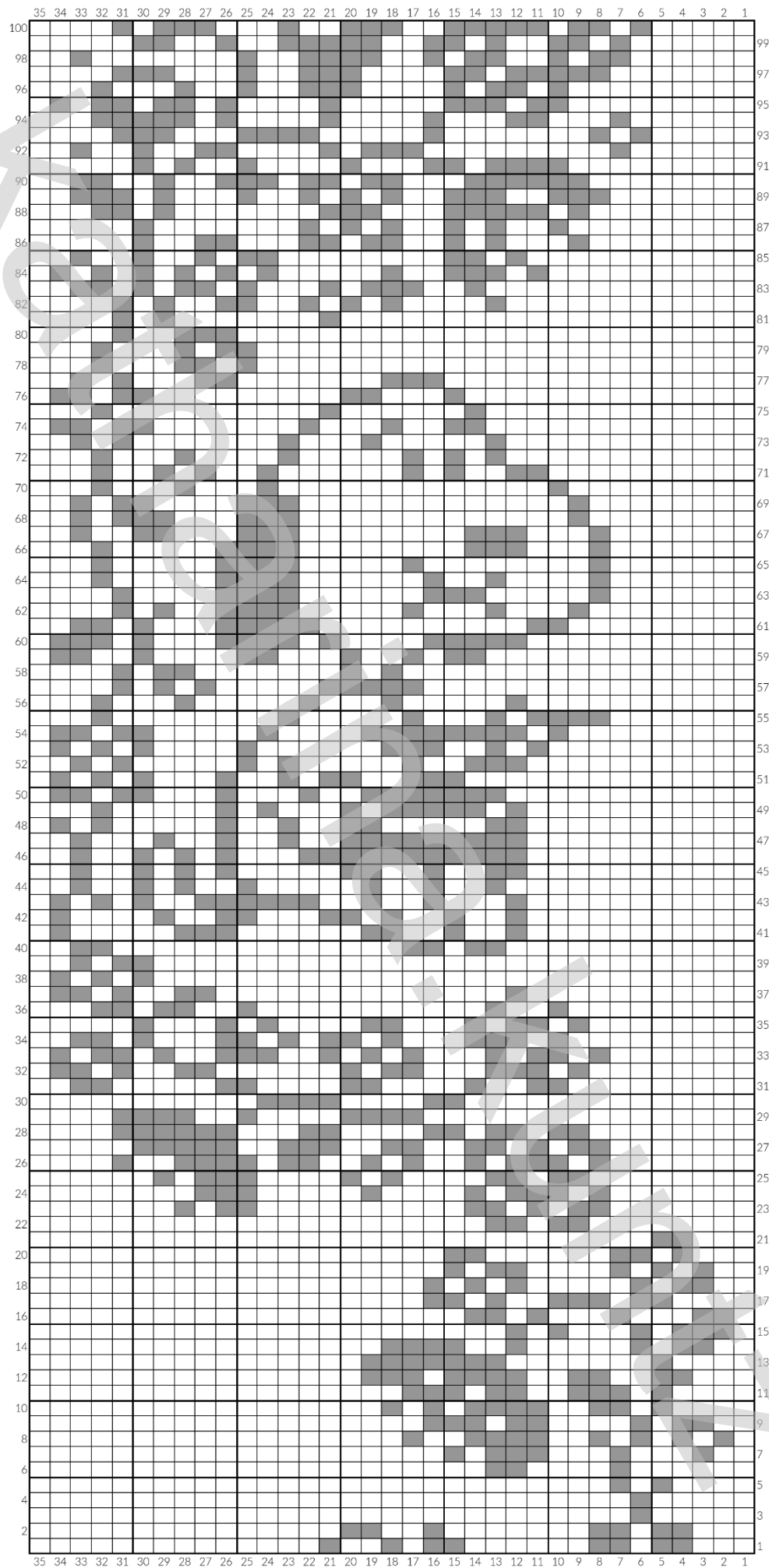


1.

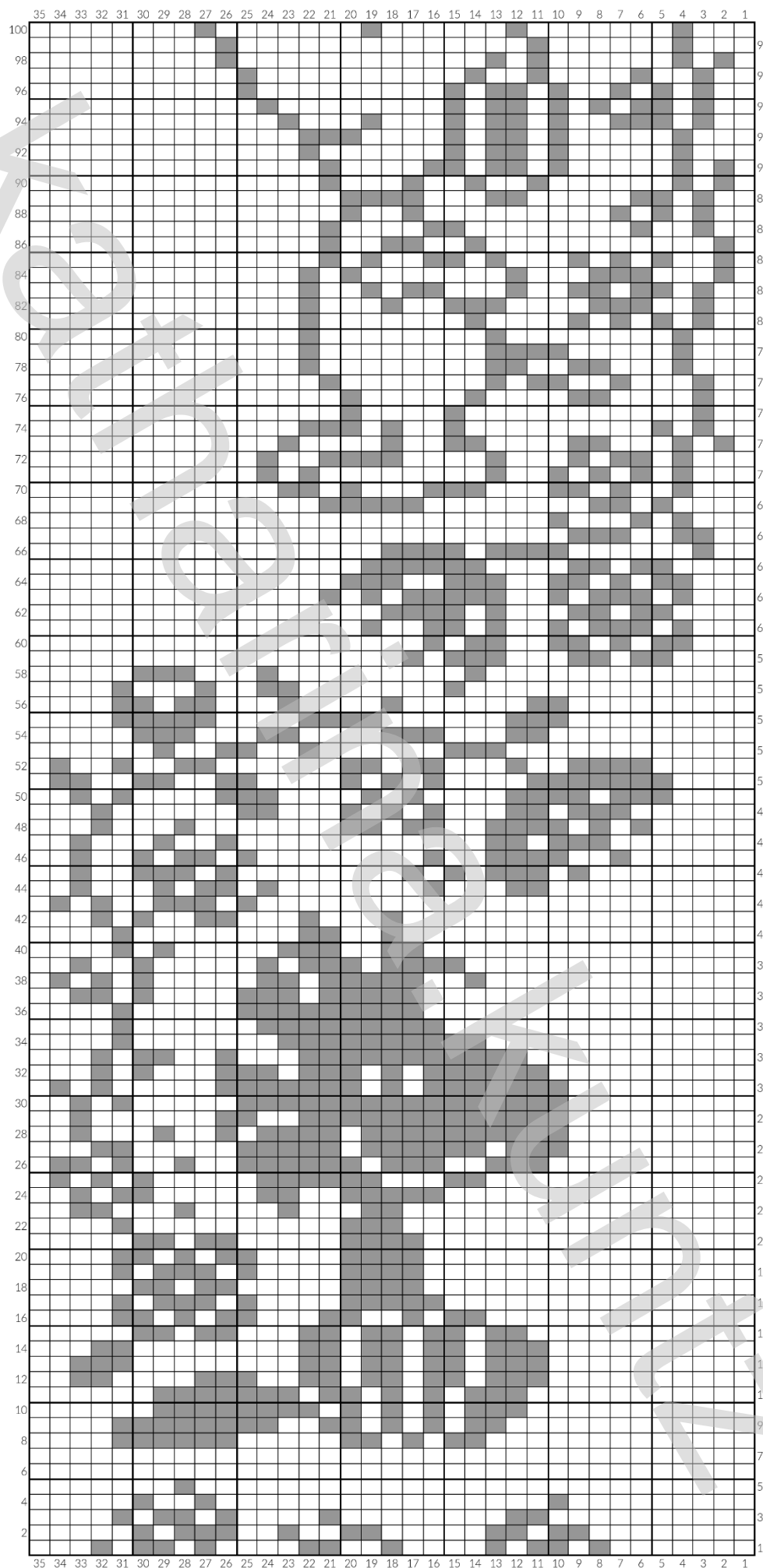




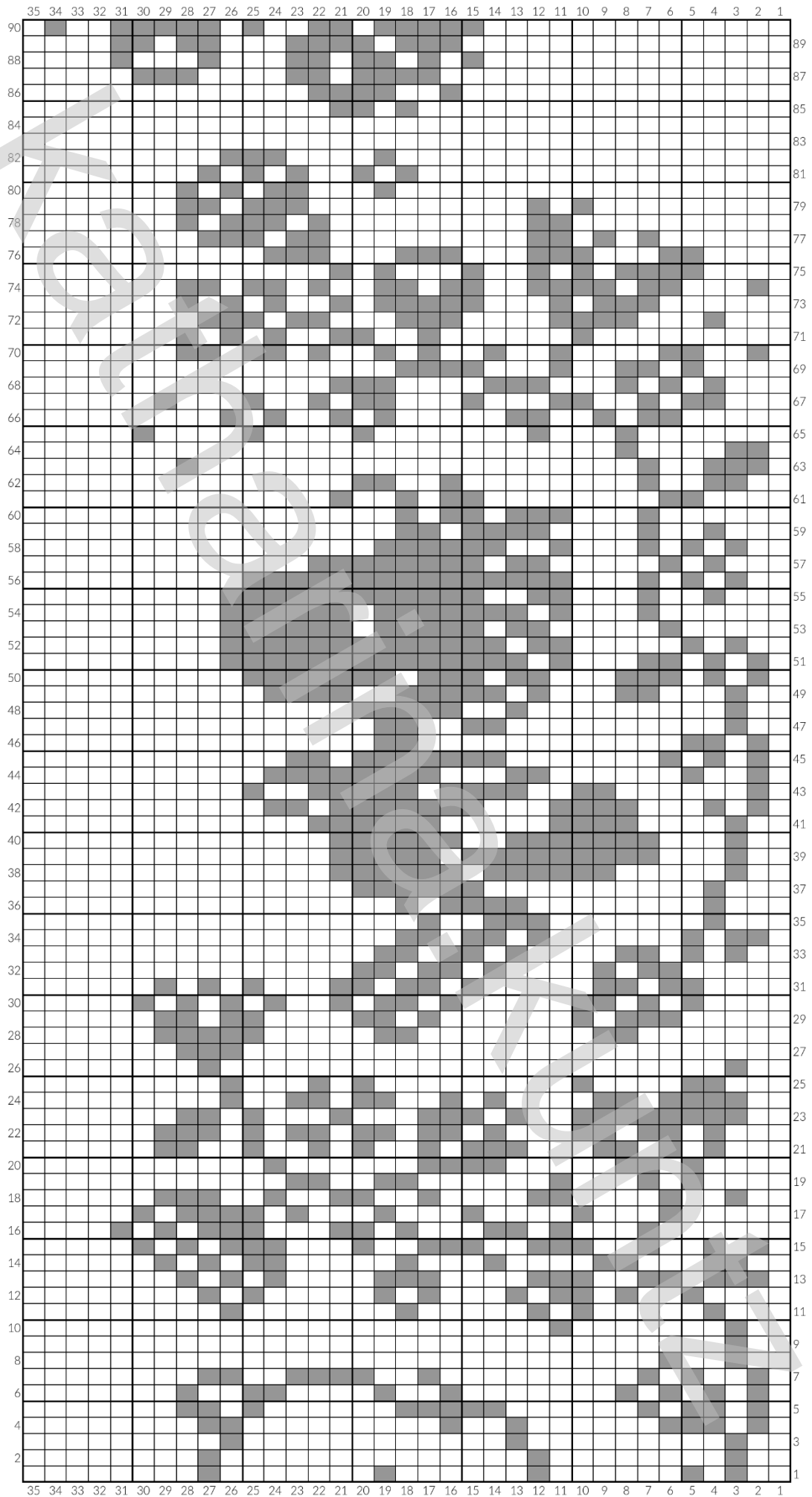
2.



3.

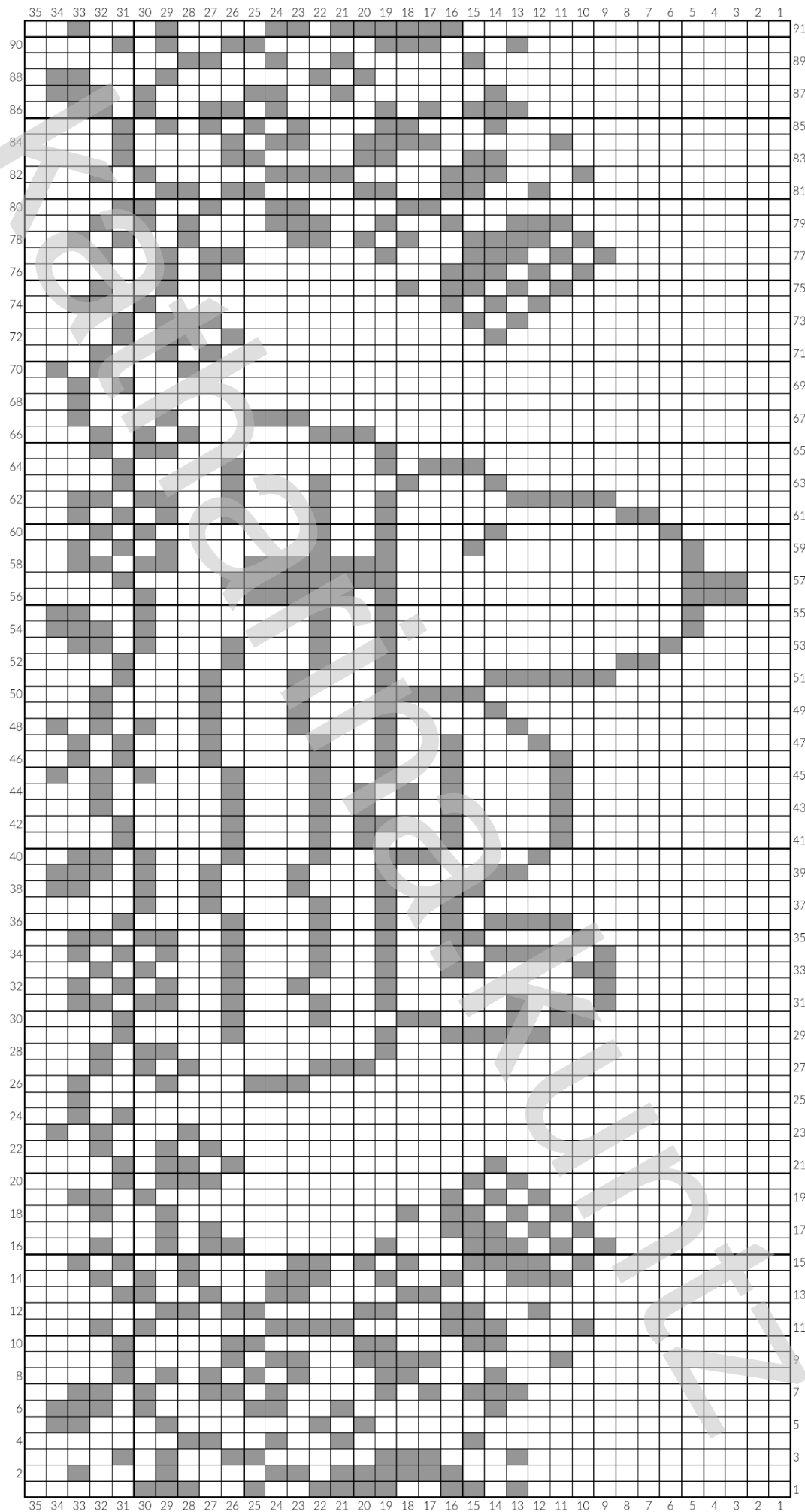


4.

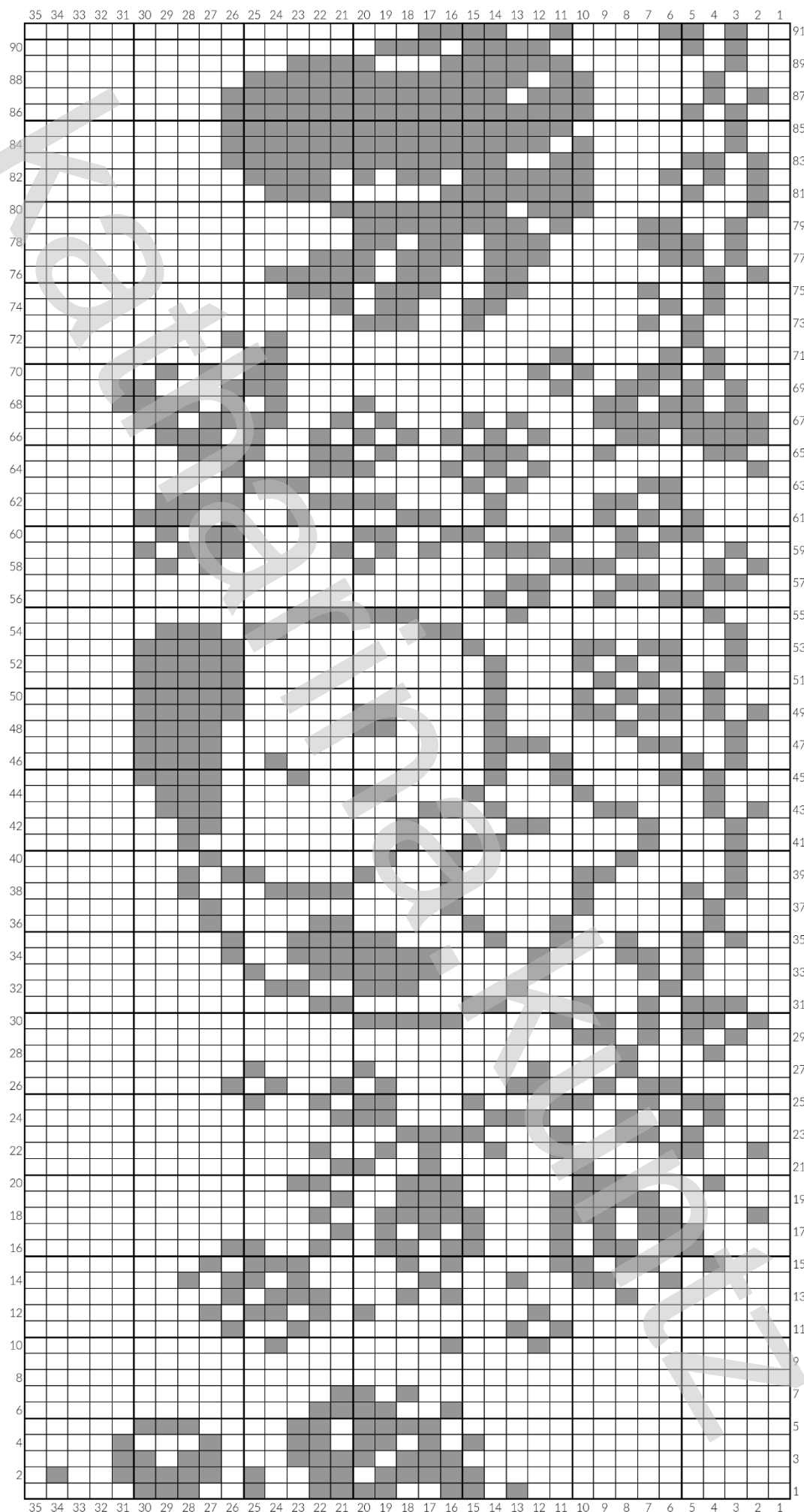




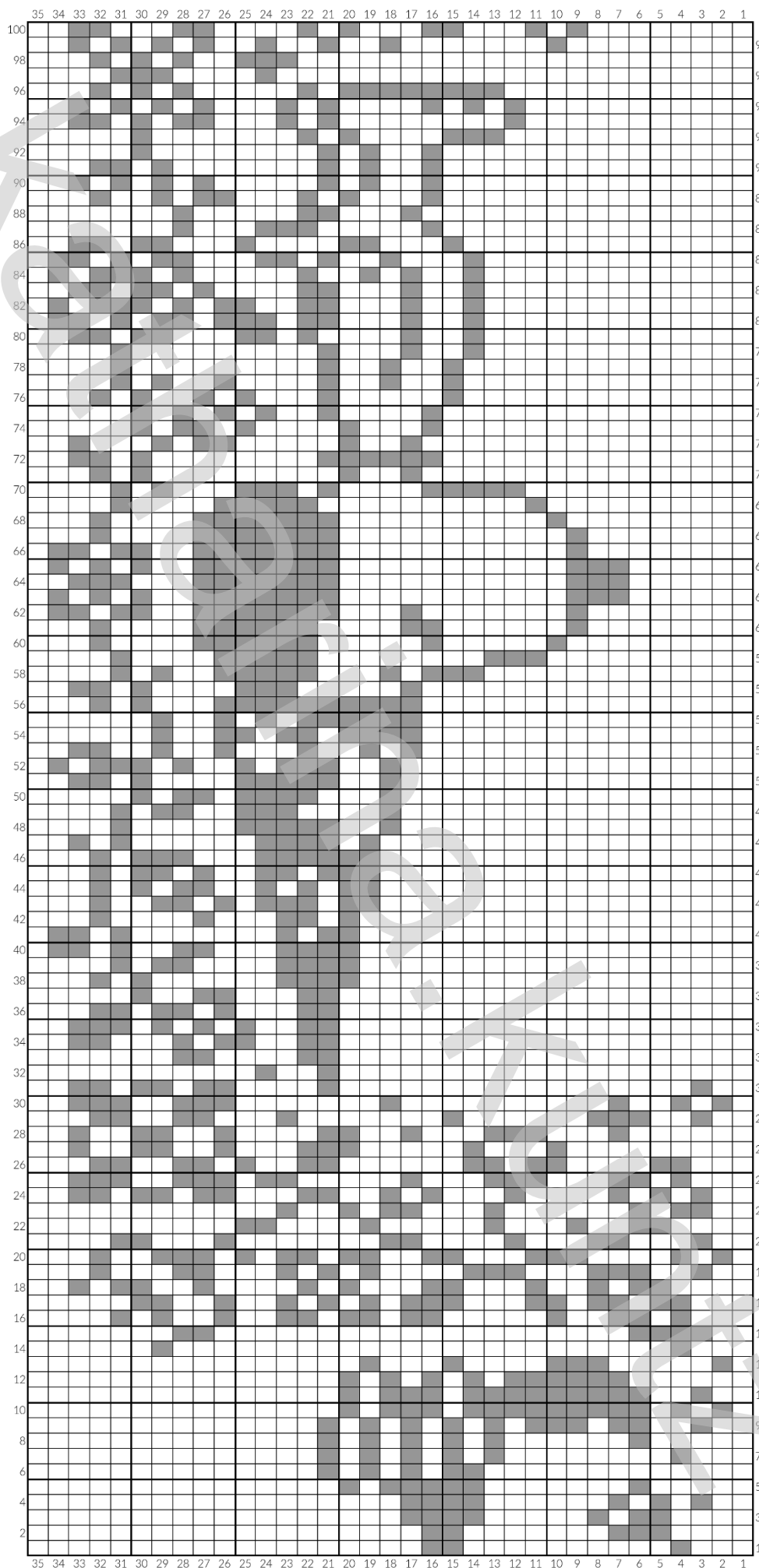
5.



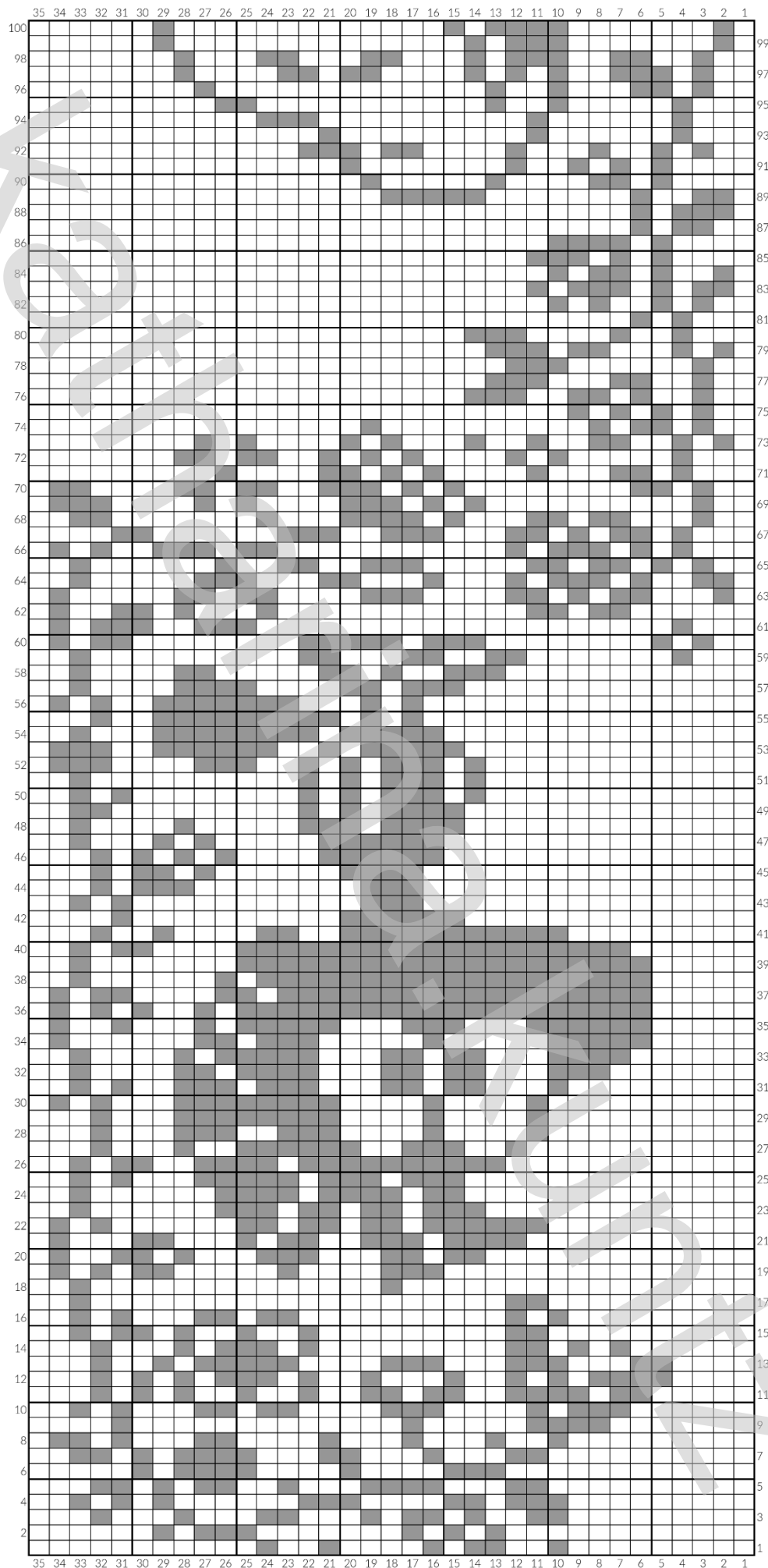
6.



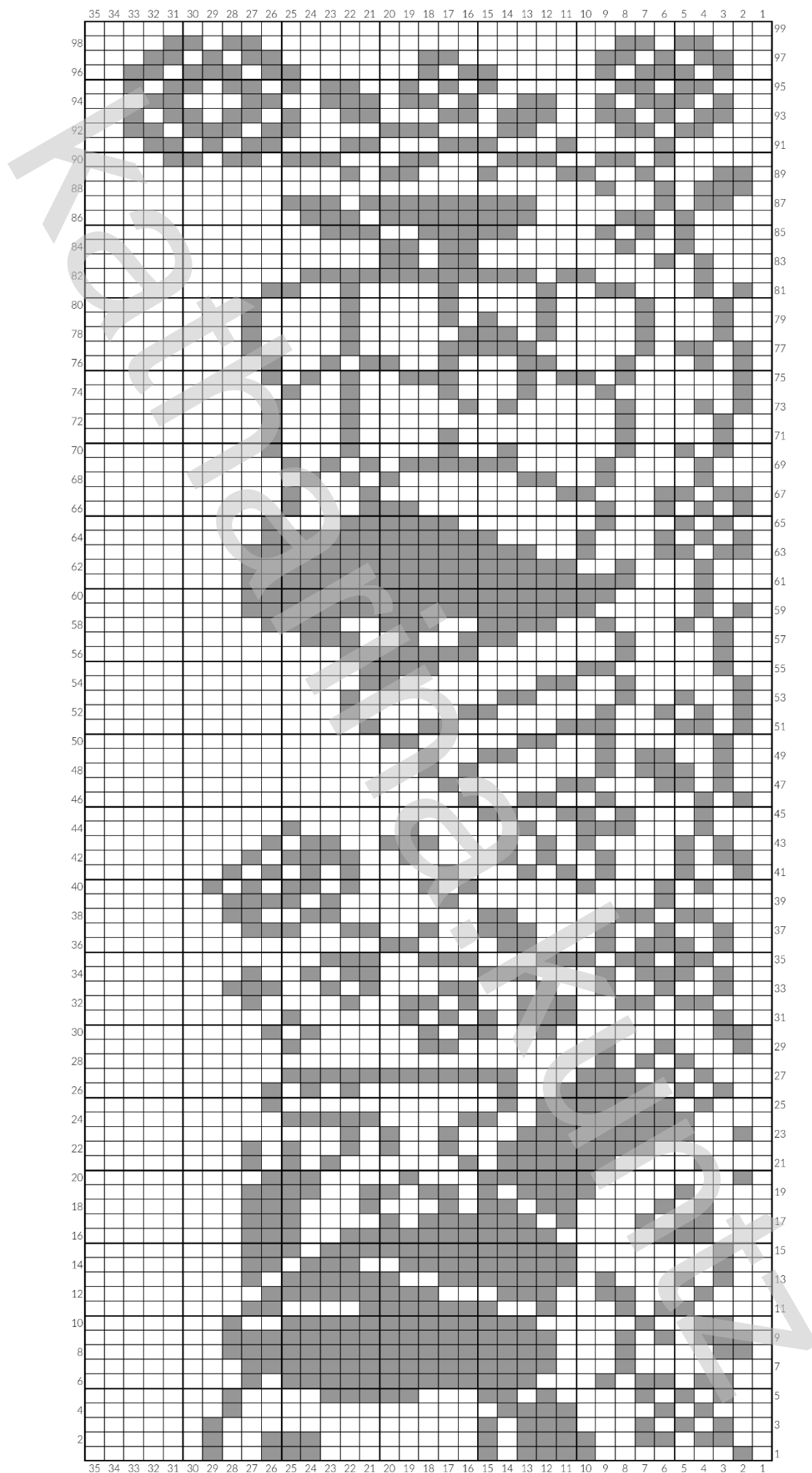
7.



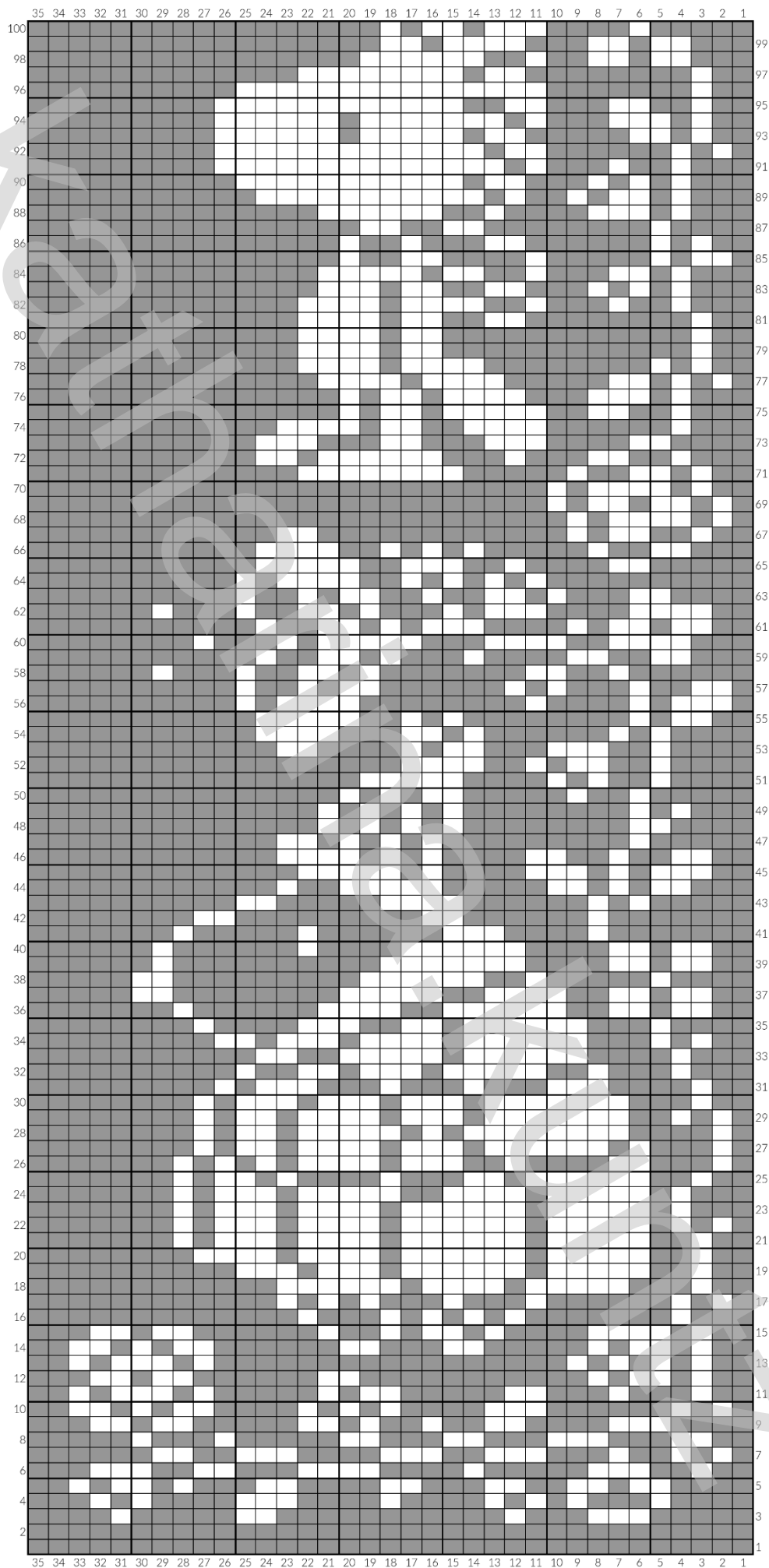
8.



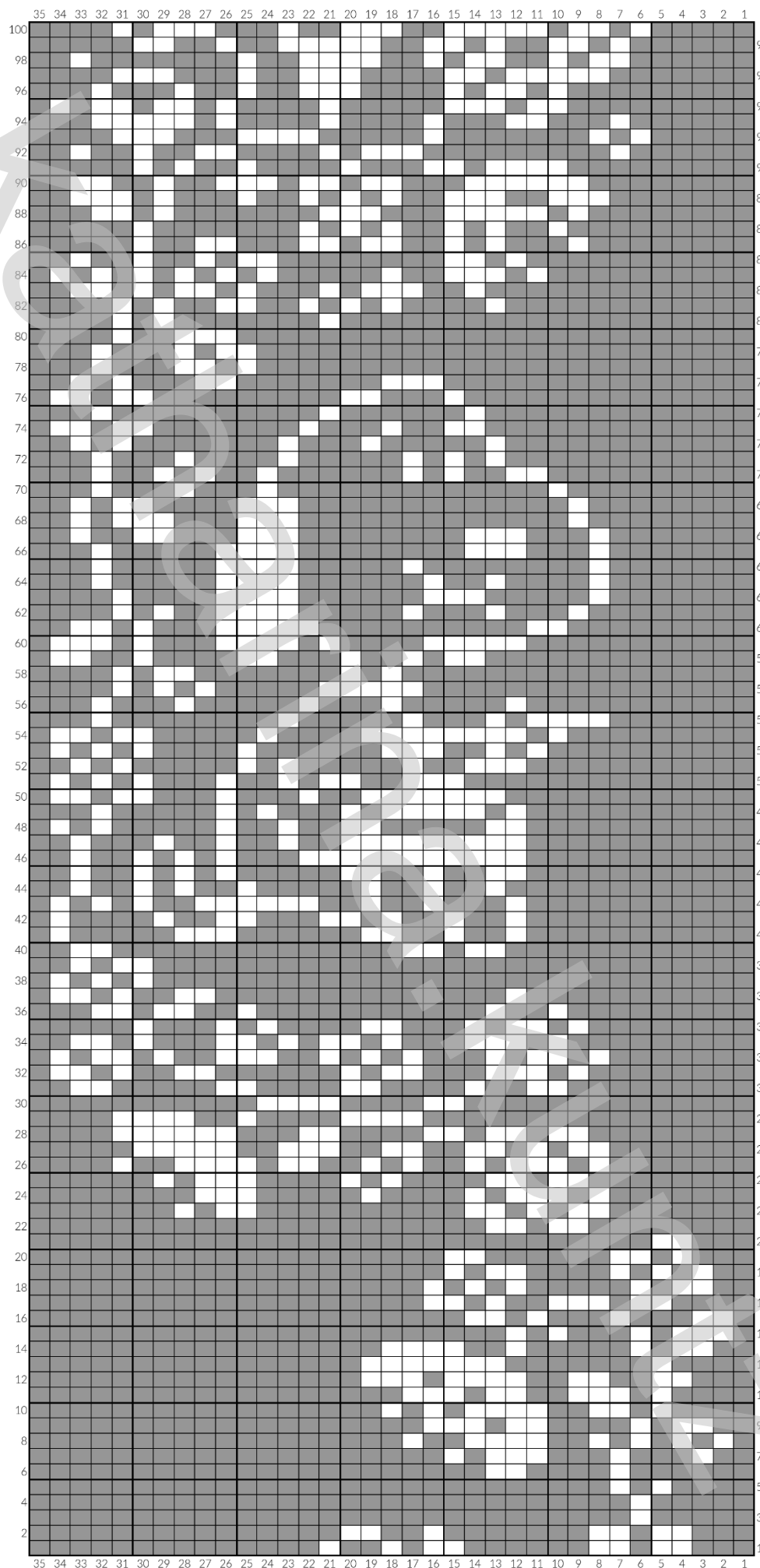
9.



1.

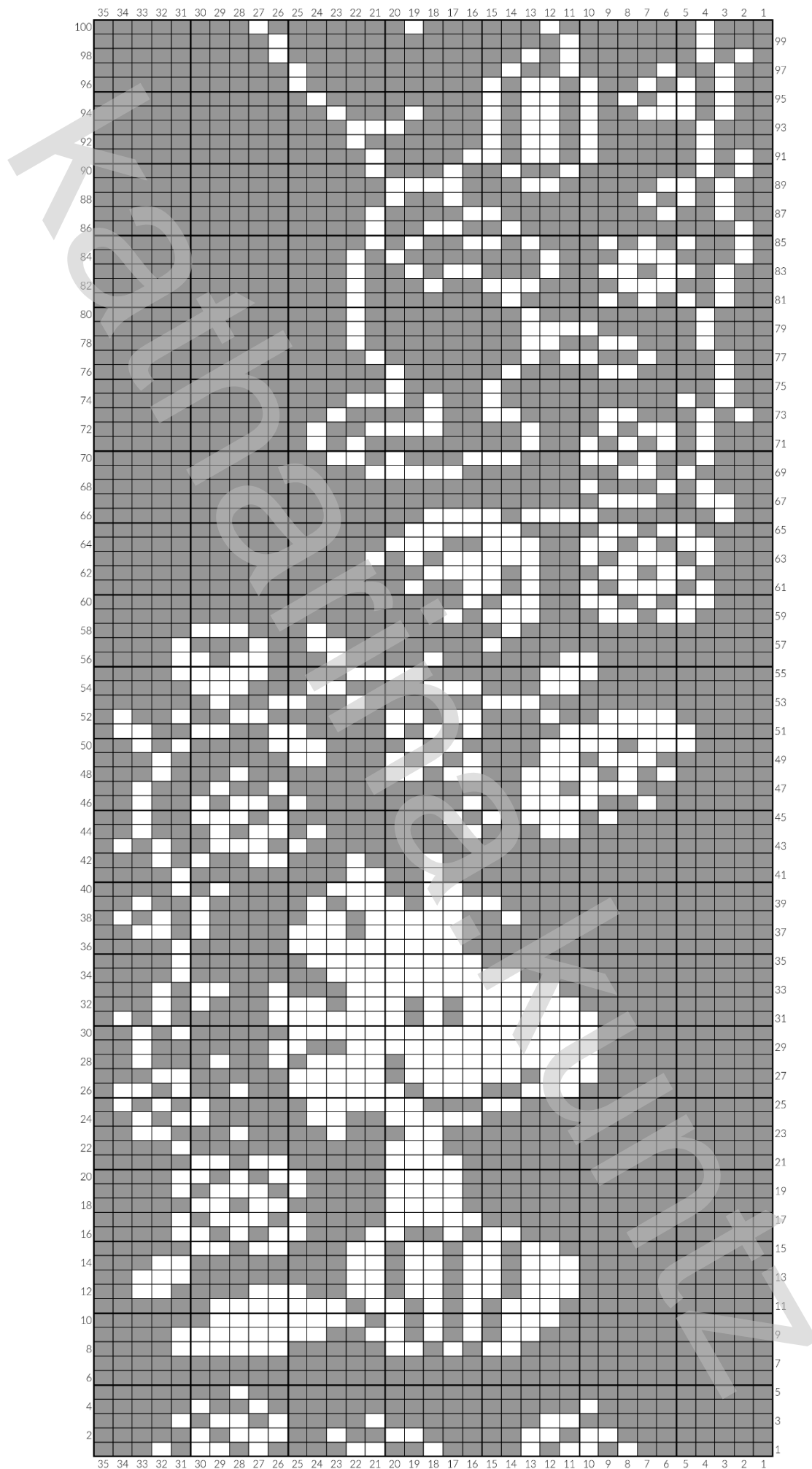


2.

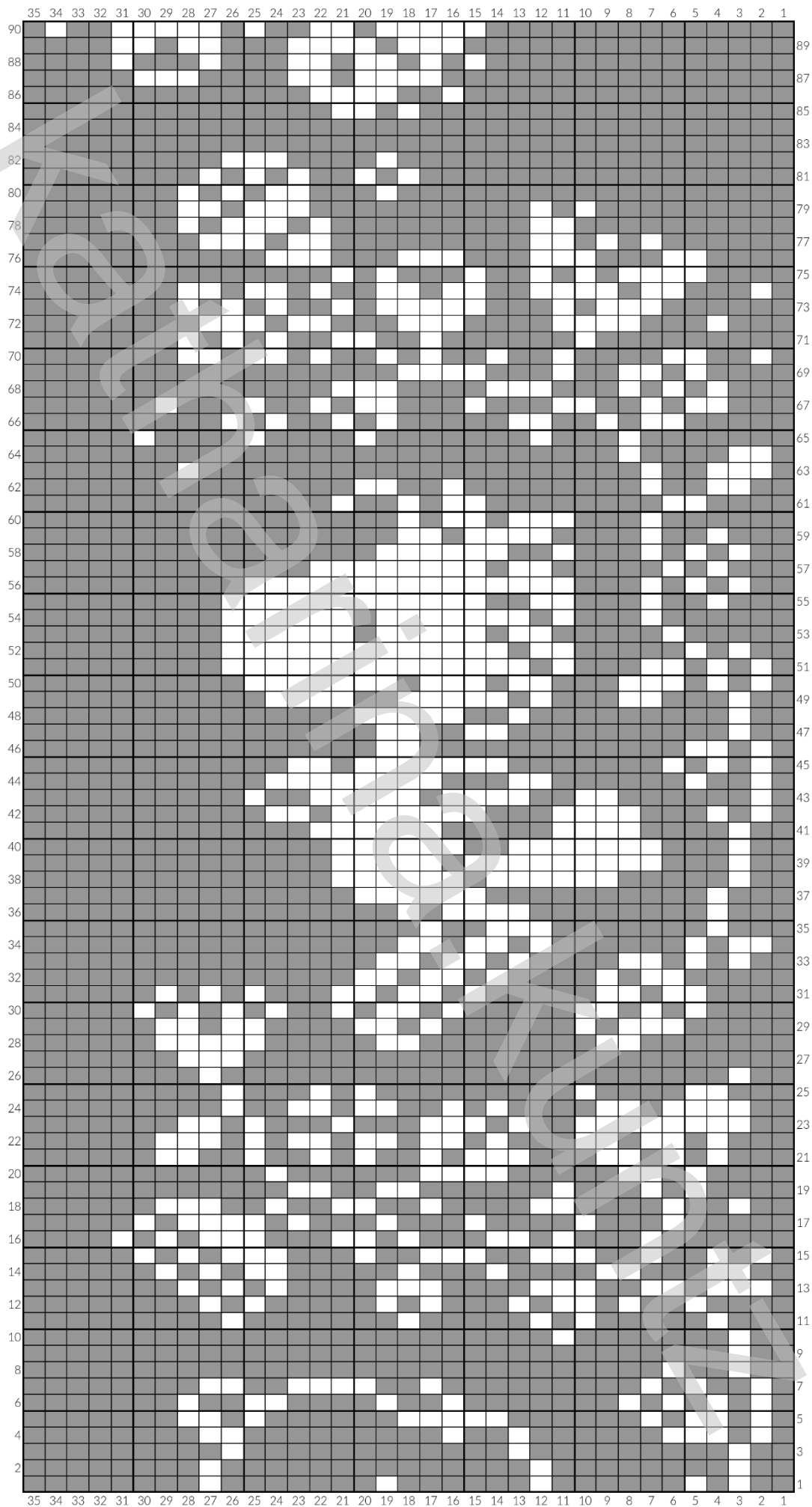




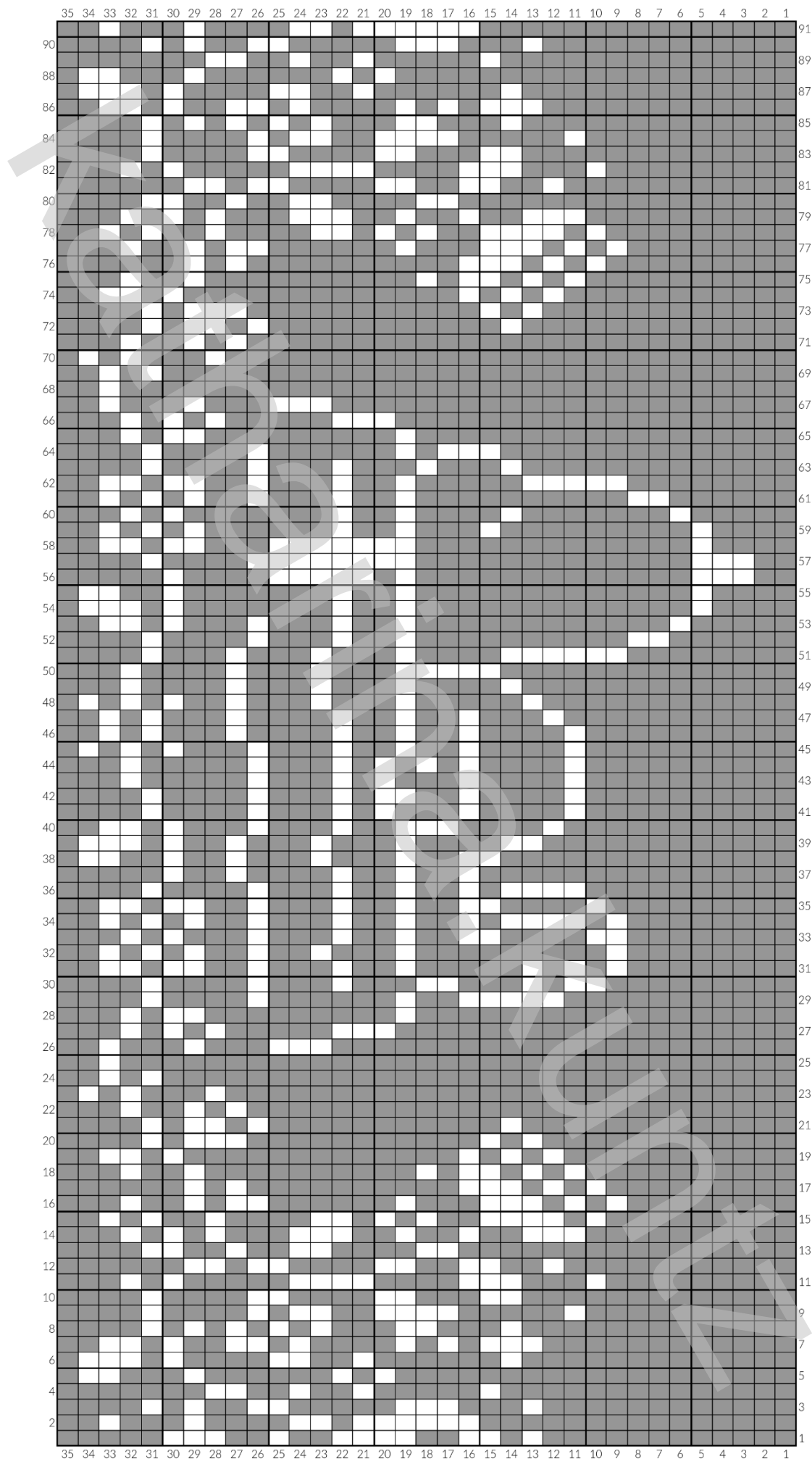
3.



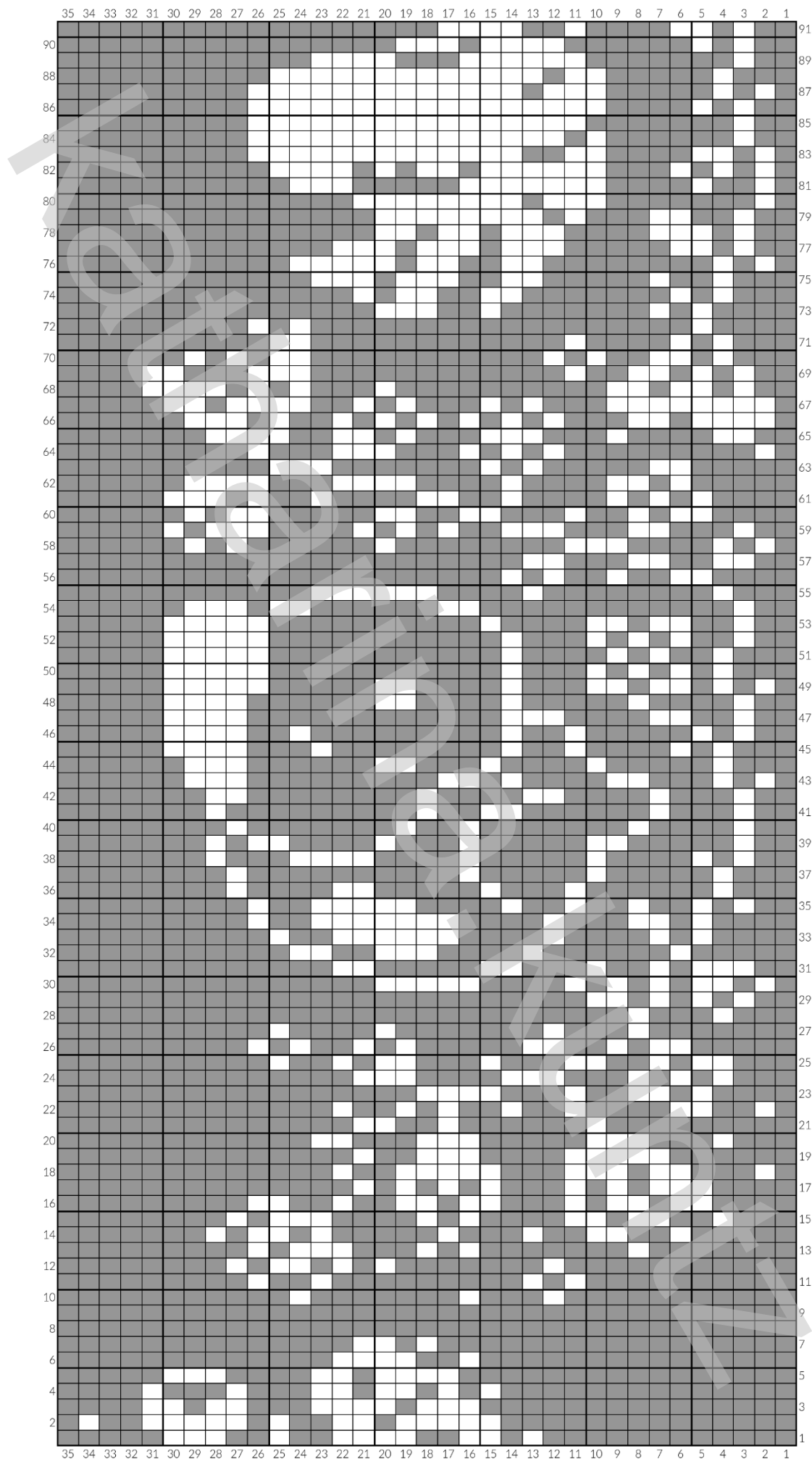
4.



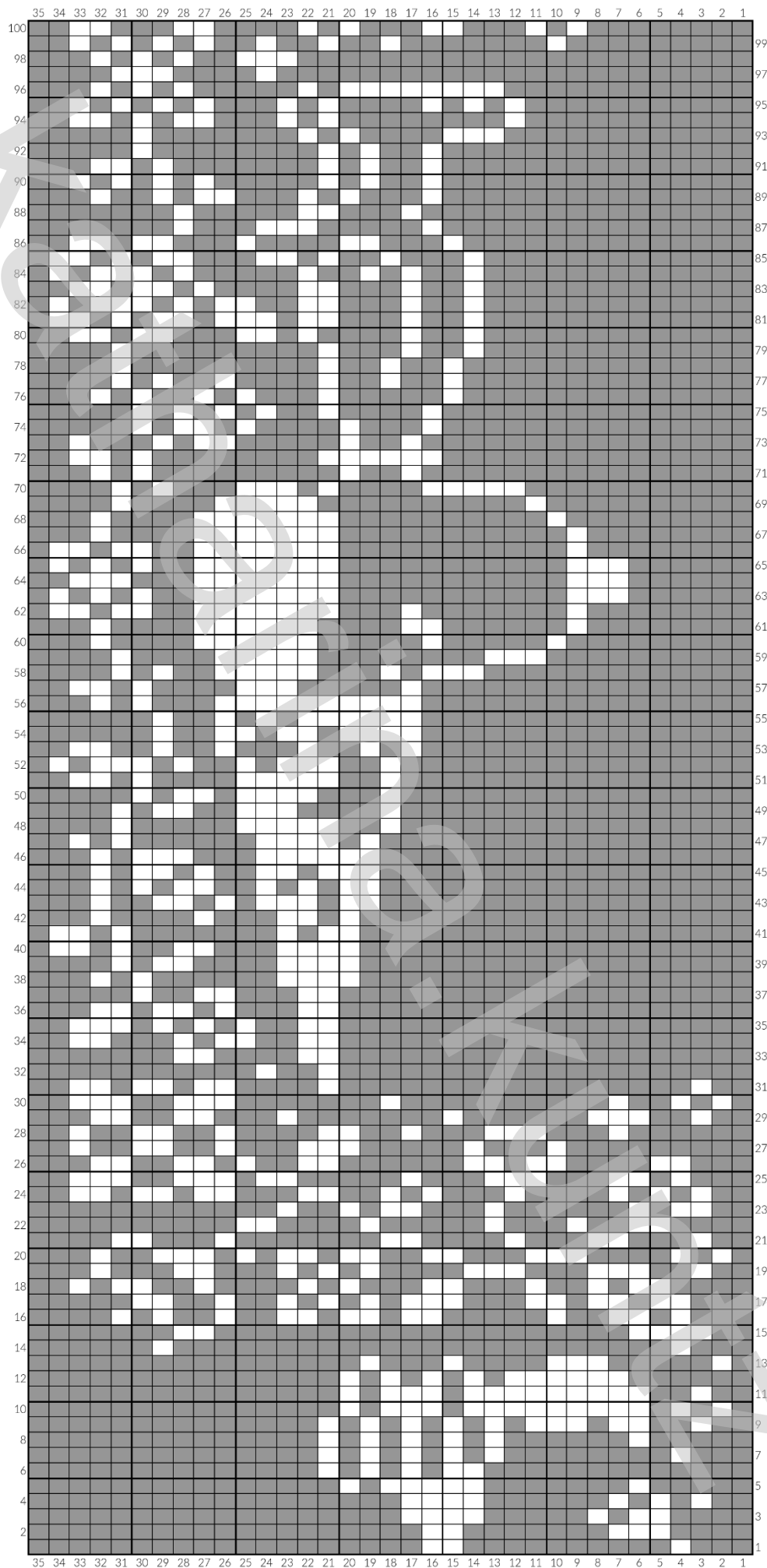
5.



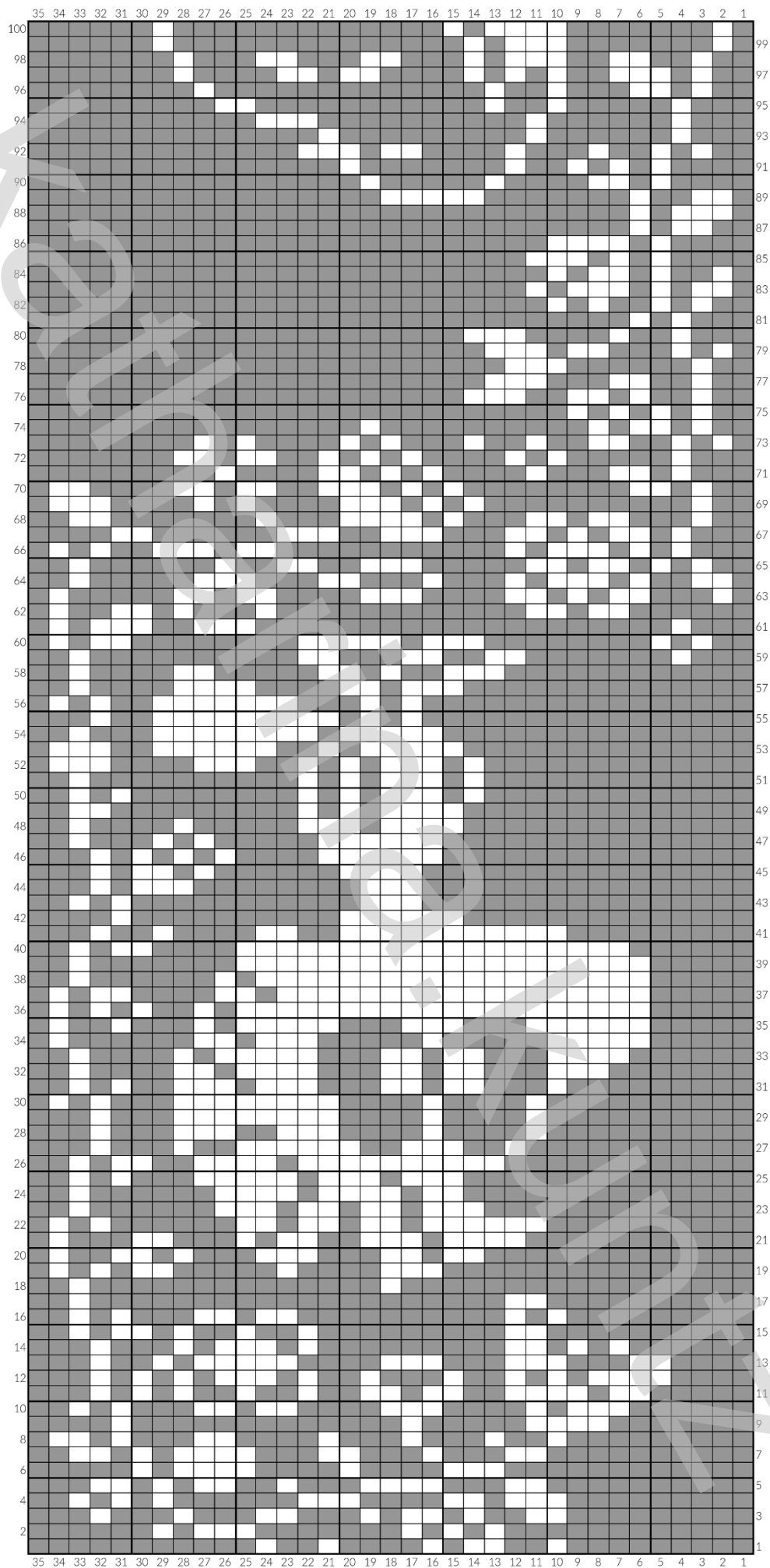
6.



7.



8.



9.

