



KNITTING PATTERN

Deja Brew

Shawl

Design: Meg Roke | Hobbii Design



MATERIALS

Highland Wool

2 skeins of color 4 (A)

1 skein of color 18 (B)

1 skein of color 25 (C)

Circular needle 3.75 mm, 100 cm / US 5, 40"

Stitch markers (4)

Tapestry needle

Scissors

YARN QUALITY

 **Highland Wool**, Hobbii

100 % Peruvian Highland Wool

50 g / 1.8 oz = 175 m / 191 yds

GAUGE

25 sts x 25 rows = 10 cm x 10 cm / 4" x 4" in
colorwork Stockinette Stitch pattern

SIZE

One size

MEASUREMENTS

Wingspan: 137 cm / 54"

Depth: 56 cm / 22"

PATTERN INFORMATION

This pattern is a triangular shaped shawl worked from the top down beginning with a garter tab increasing at four points every other row to create the classic triangle shawl shape. The shawl features an eclectic combination of repeating colorwork, stripes, and textured stitch patterns.

This pattern is for intermediate knitters.

HASHTAGS FOR SOCIAL MEDIA

#hobbiidesign #hobbiidejabrew #dejabrew

#dejabrewshawl

BUY THE YARN HERE

<https://shop.hobbii.com/deja-brew-shawl>



QUESTIONS

If you have any questions regarding this pattern, please feel free to email us at support@hobbii.com. Please make sure to include the pattern's name and number.

Happy Crafting!

Pattern



ABBREVIATIONS

CO = cast on

BO = bind off

Inc = increase

K = knit

M = marker

M1L = make 1 left: Insert left needle, from front to back, under strand of yarn which runs between next stitch on left needle and last stitch on right needle; knit this stitch through back loop. (1 st increased)

M1R = make 1 right: Insert left needle, from back to front, under strand of yarn which runs between next stitch on left needle and last stitch on right needle; knit this stitch through front loop. (1 st increased)

Patt = pattern

P = purl

Pm = place marker

Rep = repeat

RS = right side

WS = wrong side

Sm = slip marker

St(s) = stitch(es)

INFO AND TIPS

Moss Stitch

Rows 1-2: K2, p2.

Rows 3-4: P2, k2.

Single Rib Stitch

All Rows: K1, p1.

Stockinette Stitch

Row 1 (RS): Knit.

Row 2 (WS): Purl.



Wide Rib Stitch

All Rows: K5, p5.

SHAWL

Garner Tab

With B, CO 2 sts using the long-tail cast-on method or preferred method of cast-on.

Knit 7 rows. Do not turn!

After the seventh row is completed, turn the work to the right 90 degrees. Pick up and knit 3 sts along the left edge. Turn the work to the right 90 degrees. Pick up and knit 2 sts from the CO edge. [7 sts total]

Section 1: Stockinette Stitch Colorwork in A and B

With A and B, work Rows 1-57 of the Section 1 Colorwork Chart twice per row with 2 knit sts on each edge and a single knit st in the middle as follows. (Rows 1-2 are listed below and are on the Colorwork Chart.)

Row 1 (RS): K2, pm, M1R, k1, M1L, pm, k1, pm, M1R, k1, M1L, pm, k2. [11 sts total]

Row 2 (WS): K2, sm, purl to m, sm, p1, sm, purl to m, sm, k2.

After Row 57, there will be 123 sts total.

Cut A.

Next Row (WS): With B, k2, sm, purl to m, sm, p1, sm, purl to m, sm, k2.

Section 2: Single Rib Stitch Stripes in B and C

Join C.

Row 1 (RS): K2 in B, sm, M1R in B, (k1 in C, p1 in B) rep to last st before next m, k1 in C, M1L in B, sm, k1 in B, sm, M1R in B, (k1 in C, p1 in B) rep to last st before next m, k1 in C, M1L in B, sm, k2 in B. [127 sts total]

Row 2 (WS): K2 in B, sm, (k1 in B, p1 in C) rep to last st before next m, k1 in B, sm, p1 in B, sm, (k1 in B, p1 in C) rep to last st before next m, k1 in B, sm, k2 in B.

Row 3: K2 in B, sm, M1R in C, (p1 in B, k1 in C) rep to last st before next m, p1 in B, M1L in C, sm, k1 in B, sm, M1R in C, (p1 in B, k1 in C) rep to last st before next m, p1 in B, M1L in C, sm, k2 in B. [131 sts total]

Row 4: K2 in B, sm, (p1 in C, k1 in B) rep to last st before next m, p1 in C, sm, p1 in B, sm, (p1 in C, k1 in B) rep to last st before next m, p1 in C, sm, k2 in B.

Rep Rows 1-3 one time. [139 sts total]

Cut B and C.

Section 3: Moss Stitch in A

Join A.

Set-up Row (WS): K2, sm, purl to m, sm, p1, sm, purl to m, sm, k2.

Row 1 (RS): K2, sm, M1R, (k2, p2) rep to last 3 sts before next m, k2, p1, M1L, sm, k1, sm, M1R, (k2, p2) rep to last 3 sts before next m, k2, p1, M1L, sm, k2. [143 sts total]

Row 2: K2, sm, (k2, p2) to last st before m, k1, sm, p1, sm, (k2, p2) to last st before m, k1, sm, k2.



Row 3: K2, sm, M1R, k1, (p2, k2), rep to m, M1L, sm, k1, sm, M1R, k1, (p2, k2) rep to m, M1L, sm, k2. [147 sts total]

Row 4: K2, sm, k1, (p2, k2) to last 2 sts before next m, p2, sm, p1, sm, k1, (p2, k2) to last 2 sts before next m, p2, sm, k2.

Continue to work in Moss Stitch and inc as established until 26 rows total have been worked ending in a WS row. [191 sts total]

Cut A.

Section 4: Single Rib Stitch Stripes in B and C

Join B.

Row 1 (RS): K2, sm, M1R, knit to next m, M1L, sm, k1, sm, M1R, knit to next m, M1L, sm, k2. [195 sts total]

Join C.

Row 2 (WS): K2 in B, sm, (p1 in C, k1 in B) rep to next m, p1 in C, sm, p1 in B, sm, (p1 in C, k1 in B) rep to next m, p1 in C, sm, k2 in B.

Row 3: K2 in B, sm, M1R in B, (k1 in C, p1 in B) rep to last st before next m, k1 in C, M1L in B, sm, k1 in B, sm, M1R in B, (k1 in C, p1 in B) rep to last st before next m, k1 in C, M1L in B, sm, k2 in B. [199 sts total]

Row 4: K2 in B, sm, (k1 in B, p1 in C) rep to last st before next m, k1 in B, sm, p1 in B, sm, (k1 in B, p1 in C) rep to last st before next m, k1 in B, sm, k2 in B.

Row 5: K2 in B, sm, M1R in C, (p1 in B, k1 in C) rep to last st before next m, p1 in B, M1L in C, sm, k1 in B, sm, M1R in C, (p1 in B, k1 in C) rep to last st before next m, p1 in B, M1L in C, sm, k2 in B. [203 sts total]

Rep Rows 2-3 one time. [207 sts total]

Rep Row 2 one time.

Cut B.

Section 5: Stockinette Stitch Colorwork in A and C

Row 1 (RS): With C only, k2, sm, M1R, knit to next m, M1L, sm, k1, sm, M1R, knit to next m, M1L, sm, k2. [211 sts total]

Join A.

Work Rows 12- 40 of the Section 5 Colorwork Chart. [267 sts total]

Next Row (RS): With C only, k2, sm, M1R, knit to next m, M1L, sm, k1, sm, M1R, knit to next m, M1L, sm, k2. [271 sts total]

Cut C.

Section 6: Wide Rib Stitch in A

Next Row (WS): With A only, k2, sm, purl to m, sm, p1, sm, purl to m, sm, k2.

Row 1 (RS): K2, sm, M1R, k4, p5, (k5, p5) rep to last 4 sts before next m, k4, M1L, sm, k1, sm, M1R, k4, p5, (k5, p5) rep to last 4 sts before next m, k4, M1L, sm, k2. [275 sts total]

Row 2: (WS): K2, sm, (p5, k5) rep to last 5 sts before next m, p5, sm, p1, sm, (p5, k5) rep to last 5 sts before next m, p5, sm, k2.

Row 3: K2, sm, M1R, (k5, p5) rep to last 5 sts before next m, k5, M1L, sm, k1, sm, M1R, (k5, p5) rep to last 5 sts before next m, k5, M1L, sm, k2. [279 sts total]

Row 4: K2, sm, k1, (p5, k5) rep to last 6 sts before m, p5, k1, sm, p1, sm, k1, (p5, k5) rep to last 6 sts before m, p5, k1, sm, k2.

Continue to work in Wide Rib Stitch pattern and inc as established until 22 rows total have been worked, ending in a WS row. [315 sts total]

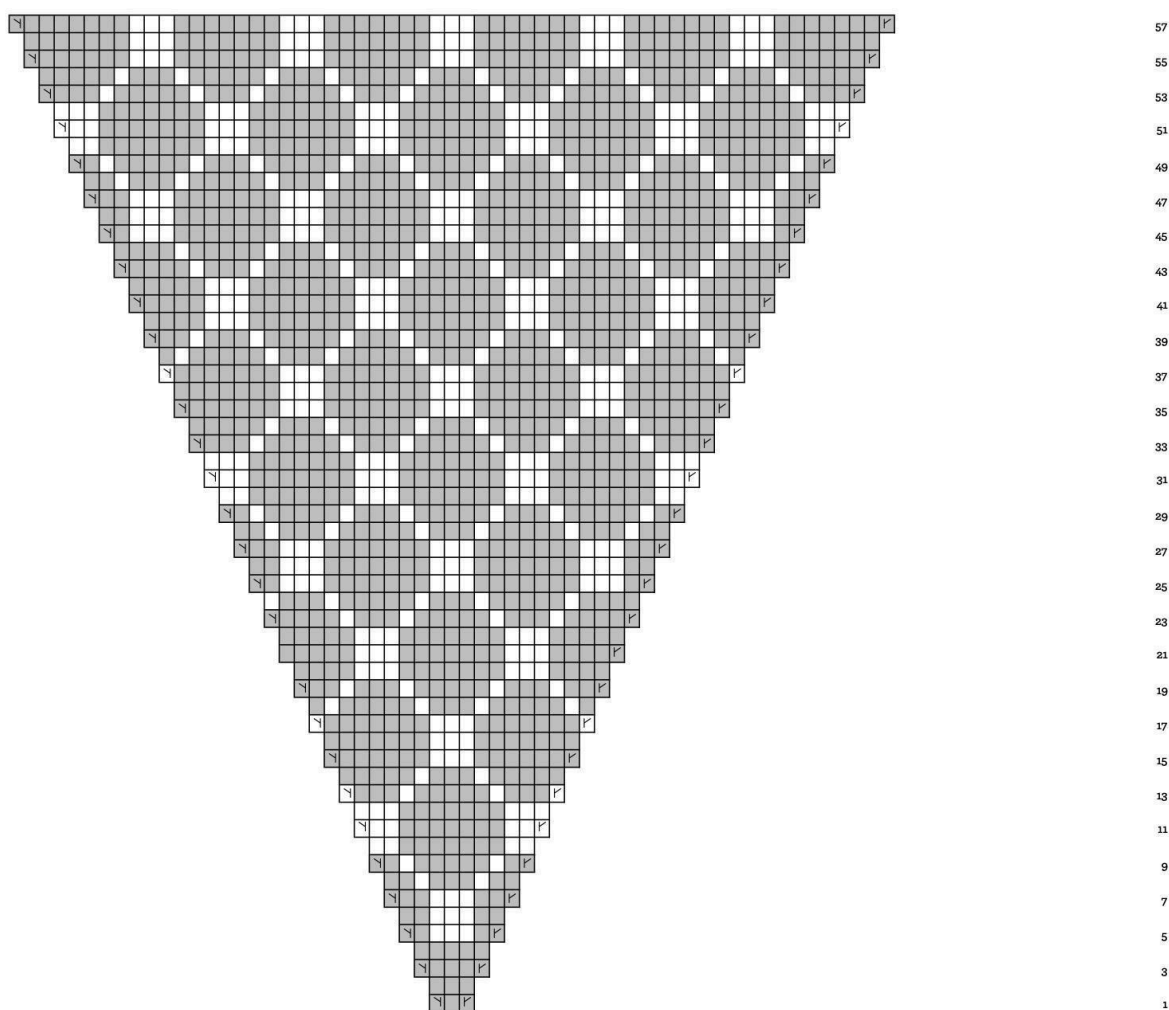
BO loosely in Wide Rib Stitch patt.

Finishing

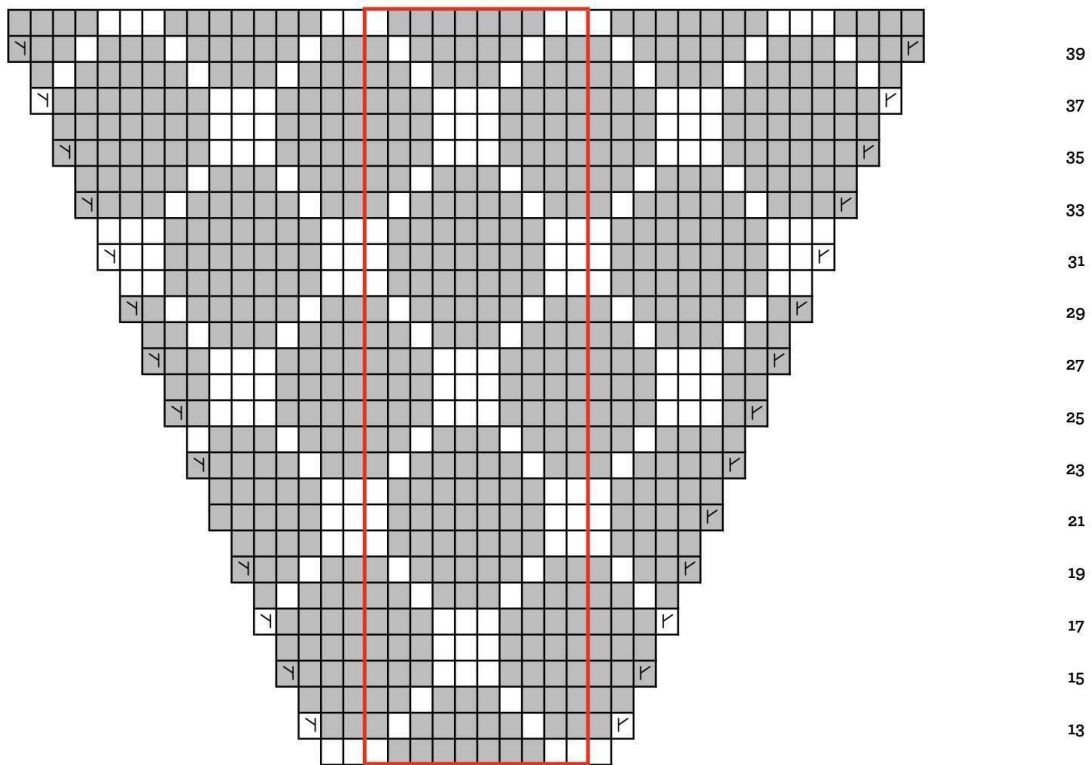
Weave in loose ends.

Block to measurements using the wet blocking technique.



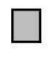


Section 1 Colorwork Chart



Section 5 Colorwork Chart



Colorwork Chart Key

-  Repeat sts in this box
-  Work i A: knit on RS/purl on WS
-  Work in B for Section 1/ Work in C for Section 5: knit on RS/purl on WS
-  M1R: make 1 right
-  M1L: make 1 left

Enjoy!

Meg Roke