

Dedale



Use the hashtag #dedalemkal to share your project.

Pattern, pictures and notes © Audrey Borrego. This pattern is for personal use only.

Yarn :

You will need two colours of fingering weight yarn in the following amounts :

MC : 500 meters – 550 yards

CC : 450 meters – 495 yards

The sample is knit with Knitting for Olive Merino in Marzipan (MC) and Brown Nougat (CC).

Needles :

3 mm (US 2.5) circular needles with appropriate cable length to knit in the round (60 cm – 24" maximum) or magic loop

or size required to get gauge

Gauge :

28 sts x 30 rnds per 10 cm – 4" in stranded knitting after blocking

Note that a different gauge will affect size and yarn usage.

Size :

125 cm – 49 1/4" circumference (adjustable)

23 cm – 9" width

Notions :

2 different stitch markers, tapestry needle and scissors

Scrap yarn for the provisional cast-on and to place sts on hold

A spare needle for cast-on and grafting

Row counter recommended

Techniques used :

Provisional Turkish cast-on

Two colours stranded knitting in the round with floats to catch

Grafting

Pattern includes charted instructions

Reading Charts :

When knitting in the round, always read the Chart from right to left.

Note that to be easier to read, each Chart has been split into 2 parts.

To help you keep track of the longer lines, use the thicker borders which cut the Chart every 10 sts.

Colourwork :

Catching floats : in fingering weight, you can catch floats when skipping more than 7 stitches. You may do it more often if you prefer, just make sure not to catch a float in the same place in two consecutive rounds.

Colour dominance : CC will form the motifs while MC will be the background colour. To have consistent colour dominance : hold CC to the left and always carry it under MC without twisting the strands.

You may notice that your fabric is rather irregular prior to blocking. This is common even amongst experience colourwork knitters. Do not let it bother you because as long as you are using a wool-based yarn, blocking will massively improve this.

Making a longer cowl :

Additional Charts are provided at the end to make the cowl longer before grafting. Do not add extra rnds between main Charts as this will break the maze pattern.

Abbreviations :

- st(s) : stitch(es)
- rnd : round
- BOR : beginning of round
- pm : place marker
- MC : main colour
- CC : contrast colour

Cast-on and set-up :

With CC, provisionally cast-on 130 sts using your preferred provisional cast-on method.

I recommend the [Turkish cast-on](#), casting-on two sets of 130 sts by wrapping the yarn 130 times around two needles.

<https://youtu.be/8svCnW25exs>

Being careful not to twist the sts, join to work in the round on the top set of 130 sts and PM for BOR.

PM also after 65 sts for the side of the cowl.

Knit 1 round in CC.

Leave the bottom set of 130 sts on hold.

Note : You should have 2 rounds of CC already before starting the Charts, which are created with the Turkish cast-on. If you used a different provisional method that did not use your CC, knit 2 rounds instead of 1.

Section 1 :

Work Chart A from pages 5-6, making 2 repeats on each rnd.

Section 2 :

Work Chart B from pages 7-8, making 2 repeats on each rnd.

Section 3 :

Work Chart C from pages 9-10, making 2 repeats on each rnd.

Section 4 :

Work Chart D from pages 11-12, making 2 repeats on each rnd.

Section 5 :

Work Chart E from pages 13-14, making 2 repeats on each rnd.

Section 6 :

Work Chart F from pages 15-16, making 2 repeats on each rnd.

If you find your cowl needs a bit more length, work any of the additional Charts from pages 17 to 19.

Finishing :

Cut yarns, leaving a CC tail of about 4 times the cowl's circumference then remove markers and place sts on hold.

Weave in all ends on the inside and gently block the cowl.

Once completely dry, place the end sts back on the needles.

Unravel the provisional cast-on and place the beginning sts on another set of needles. Arrange the sts to make sure they are not twisted.

Note : If you do not want to work a grafting on a large number of sts, you may use a [three needle bind-off](#) instead. Because you will be doing it facing the right side of the cowl, it will create a visible small seam.

(3-needle BO tutorial by Very Pink Knits)

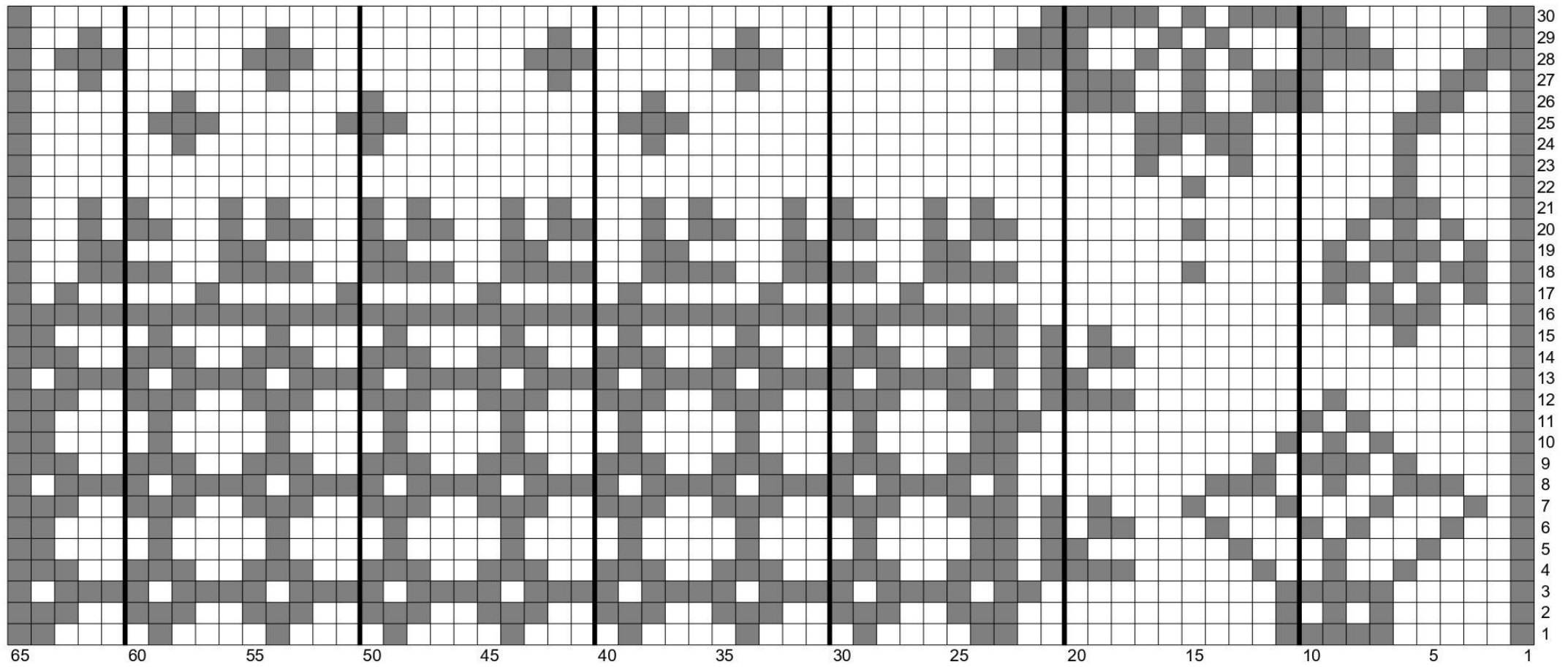
Using the CC tail and being careful not to twist the cowl unless you want a moebius effect, graft the beginning and end sts together to close the tube using the [kitchener stitch](#).

(Kitchener stitch tutorial by Very Pink Knits)

Weave the grafting ends inside the cowl.

CHART A

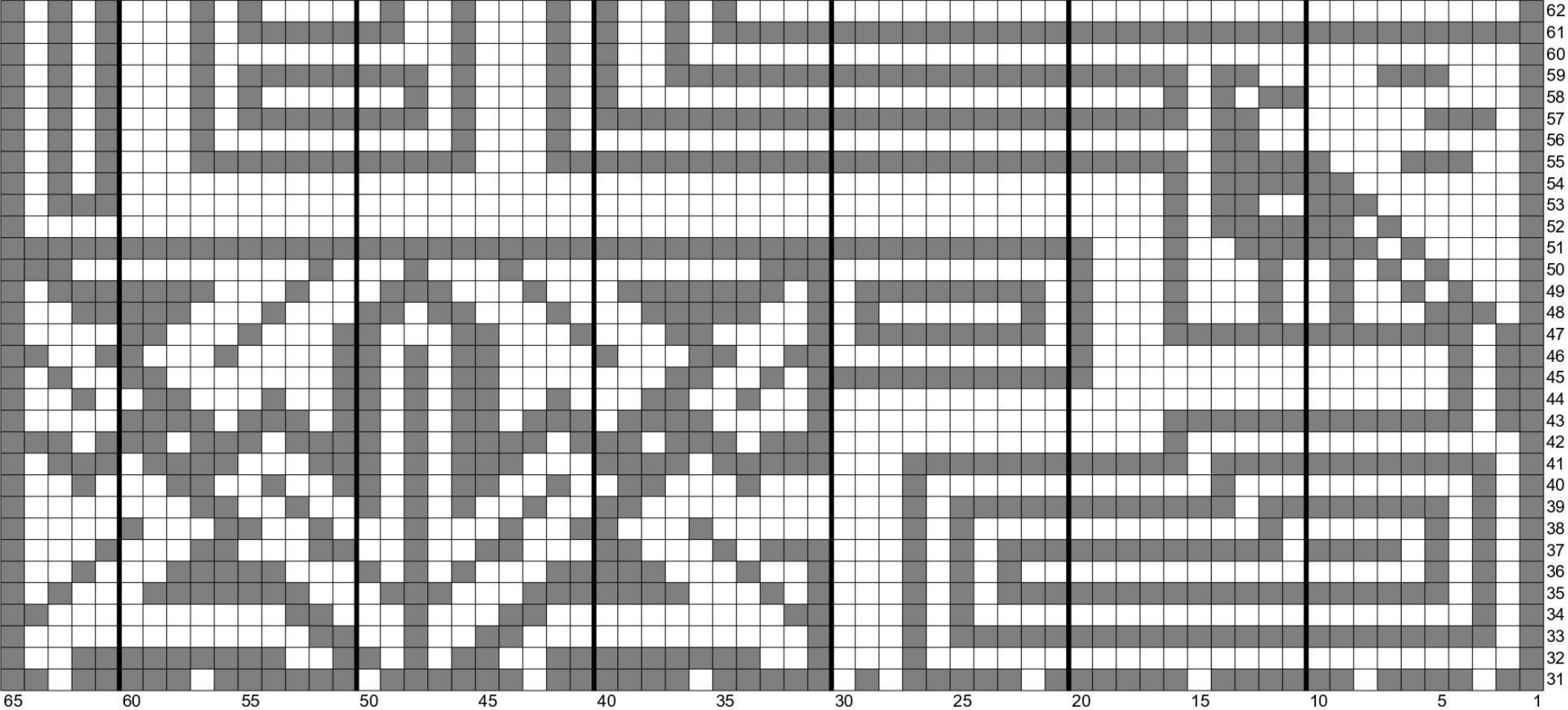
Part 1



MC

CC

Part 2

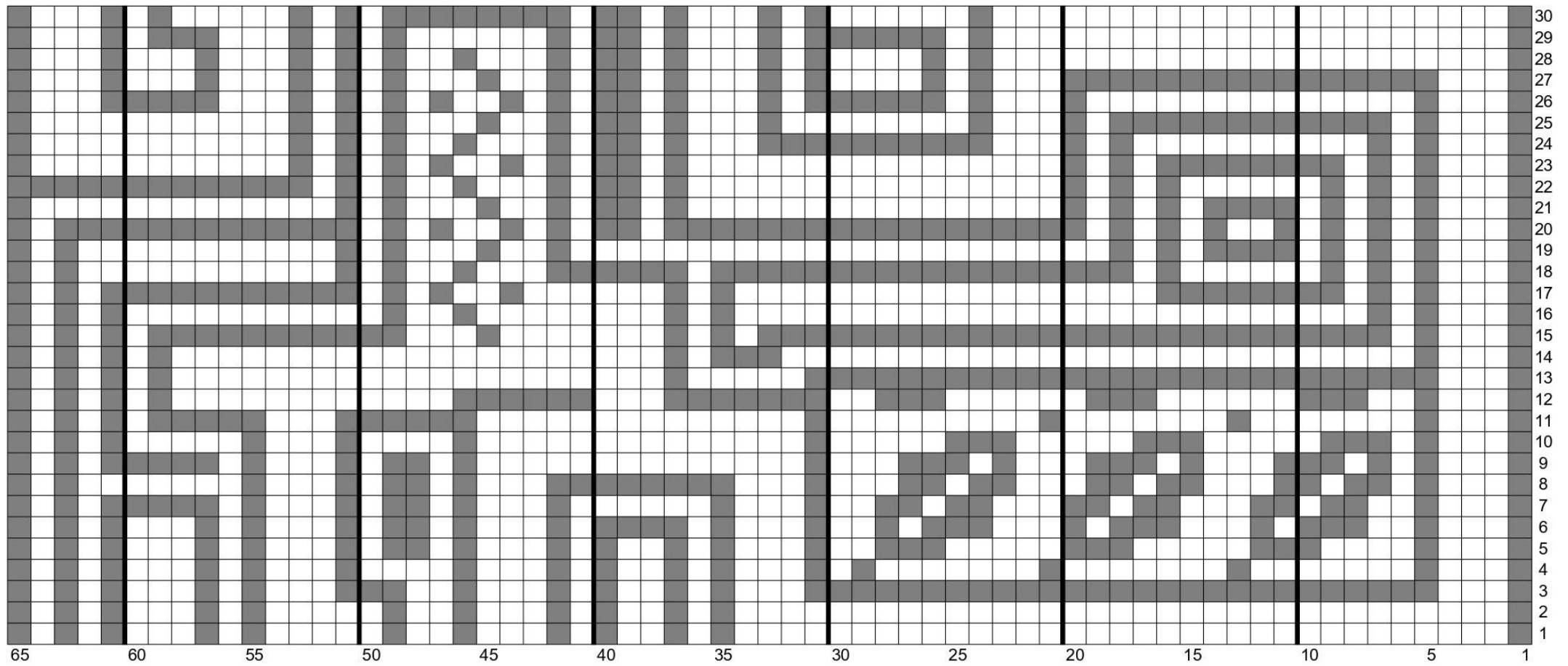


MC

CC

CHART B

Part 1



MC

CC

Part 2

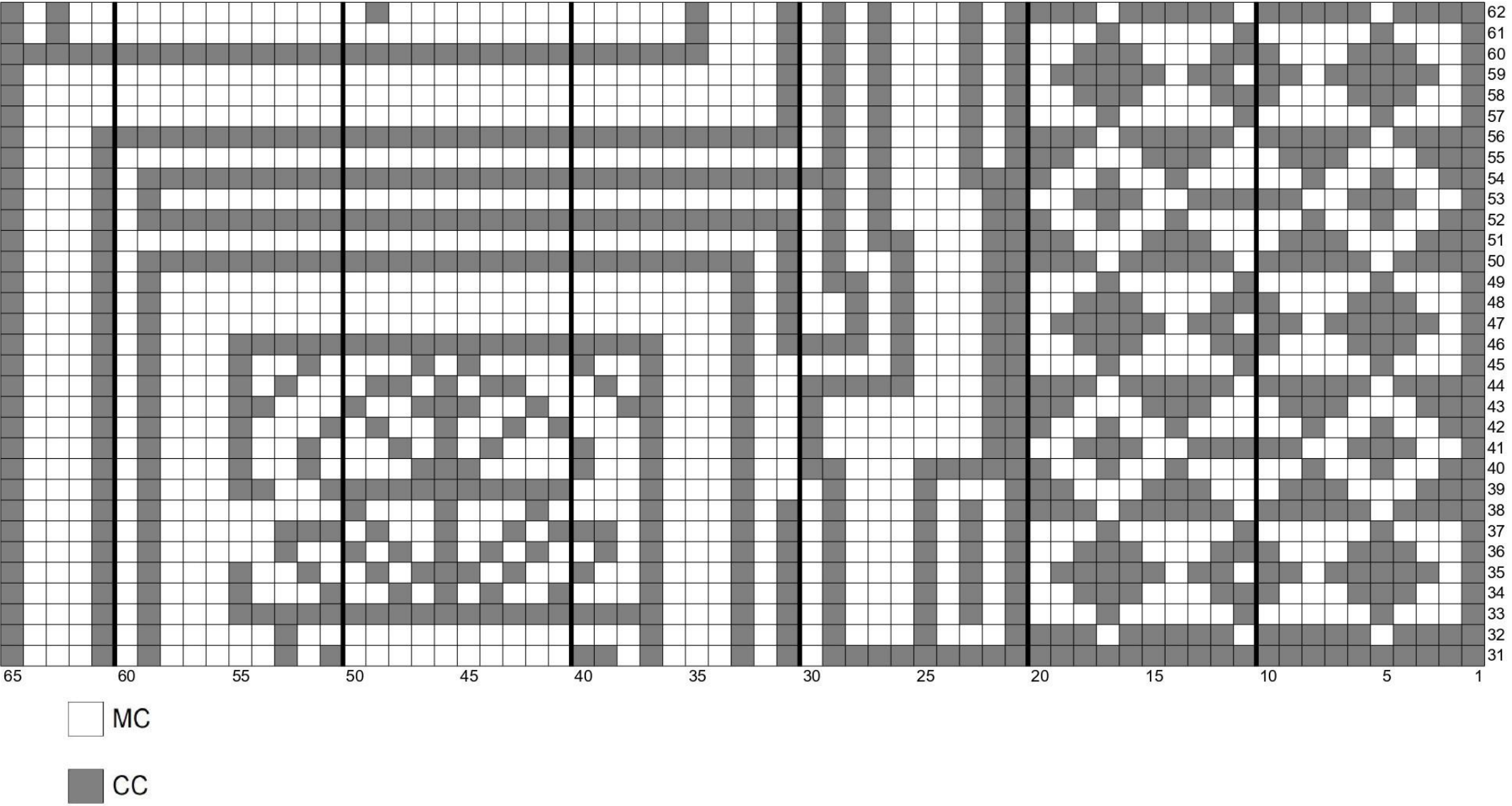
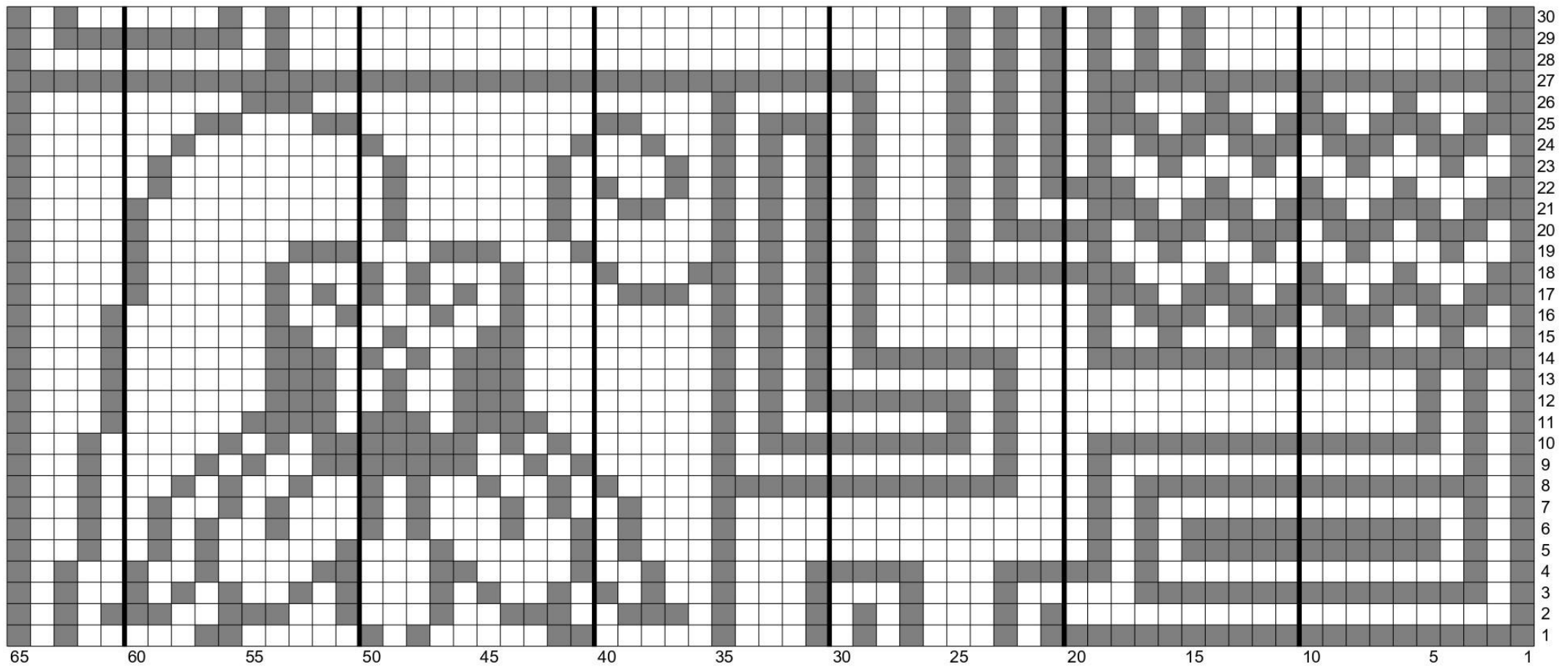


CHART C

Part 1



MC

CC

Part 2

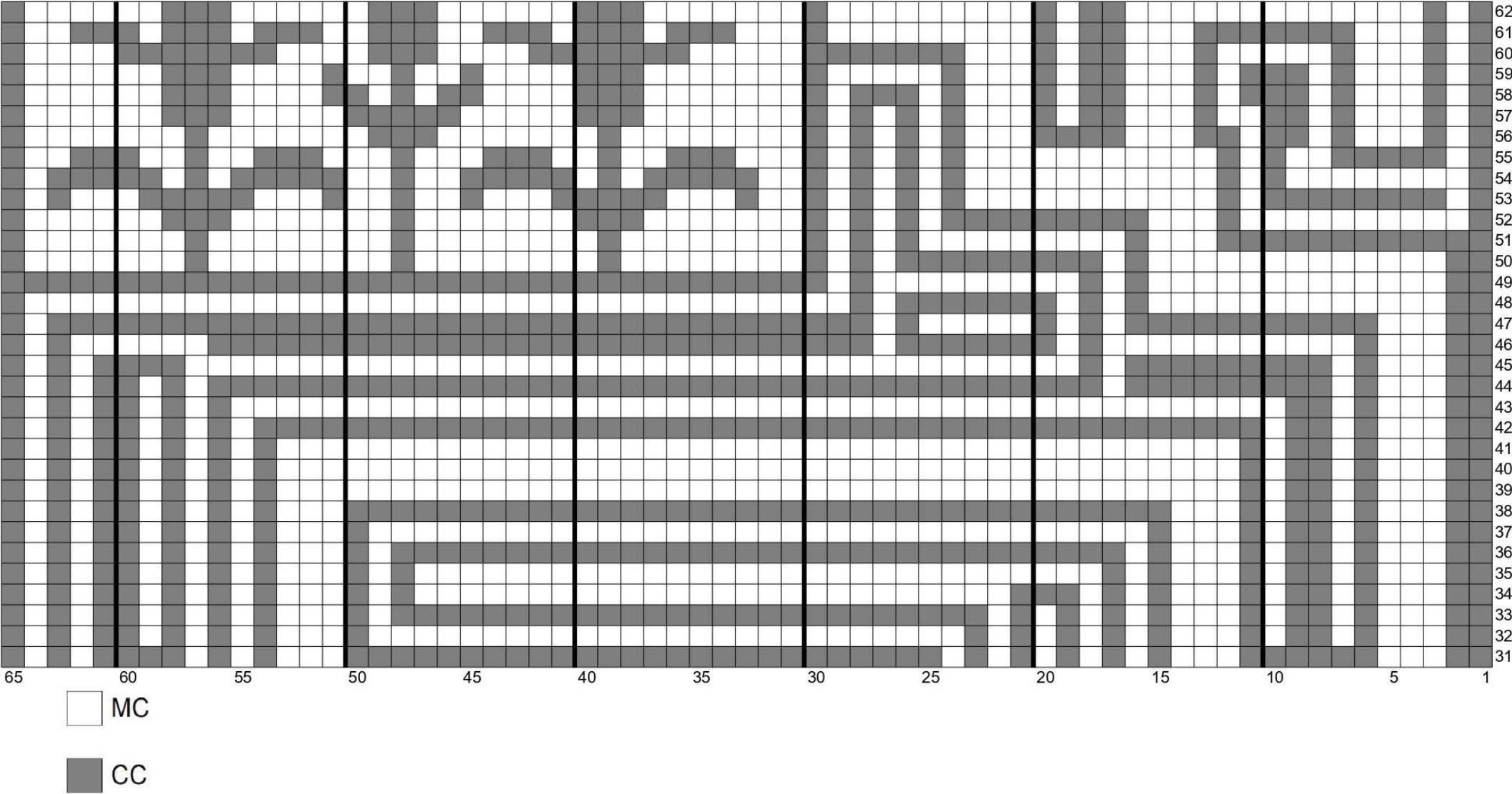
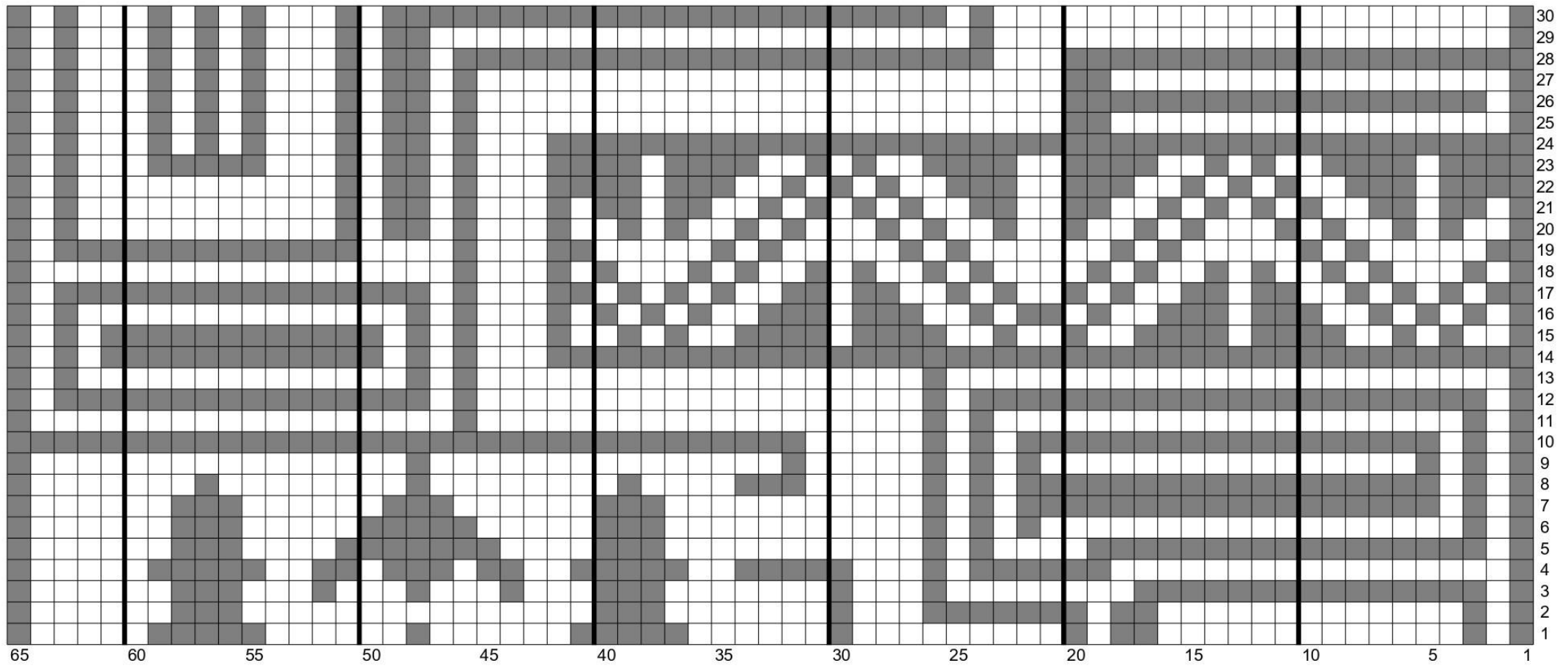


CHART D

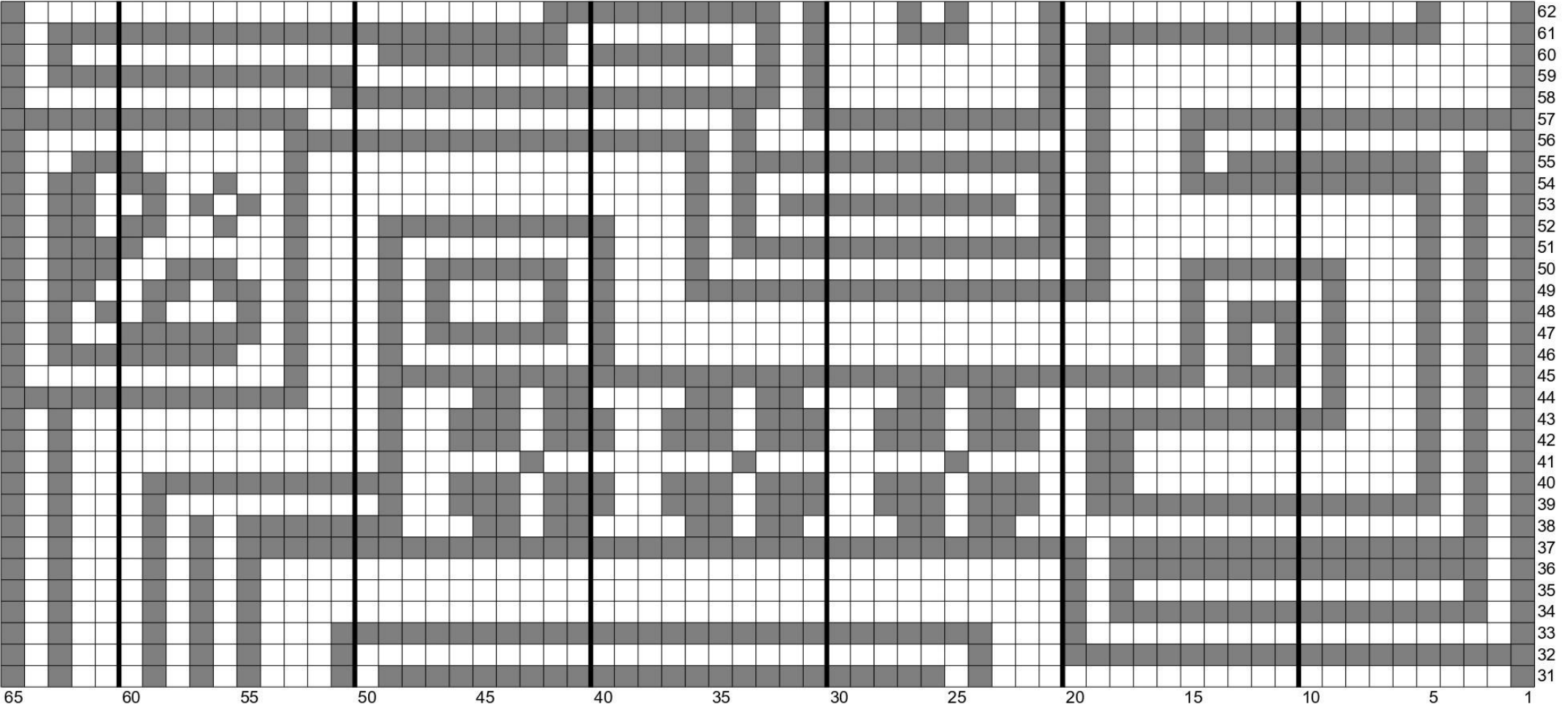
Part 1



MC

CC

Part 2

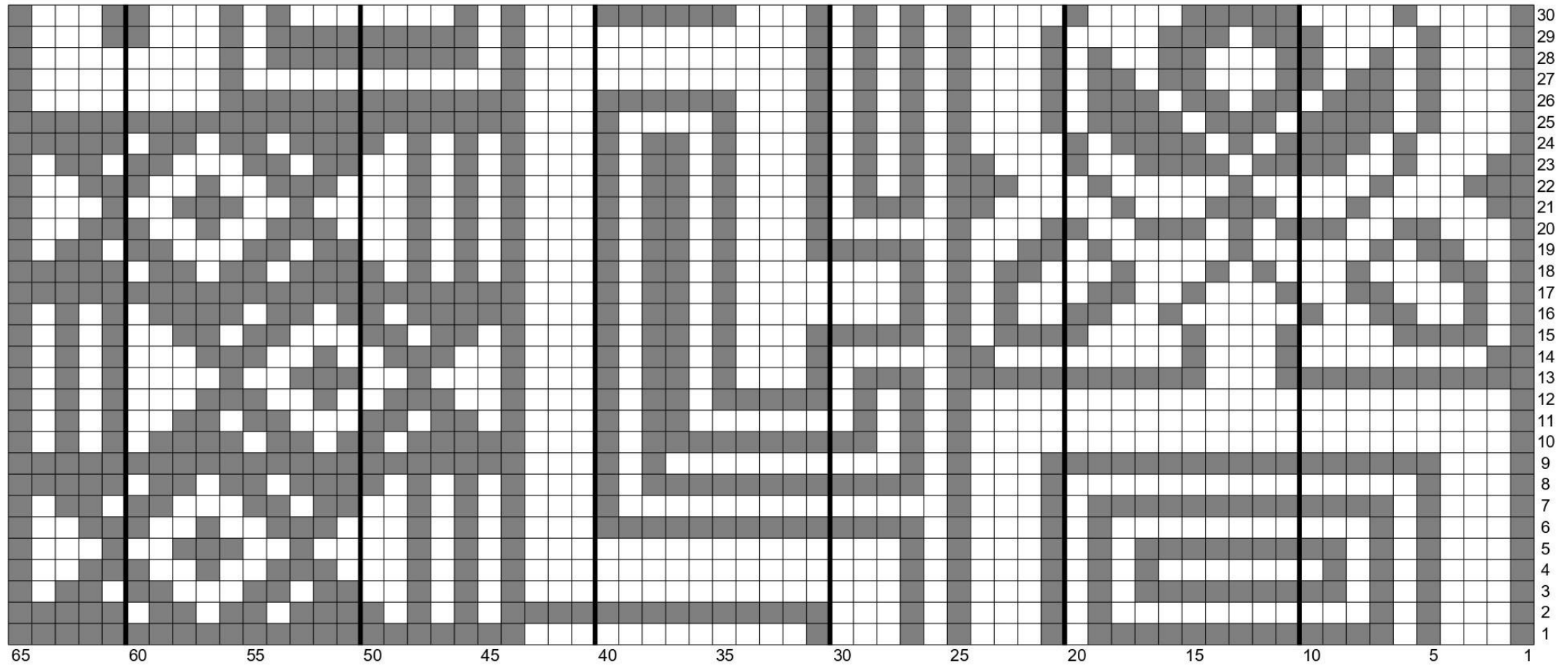


MC

CC

CHART E

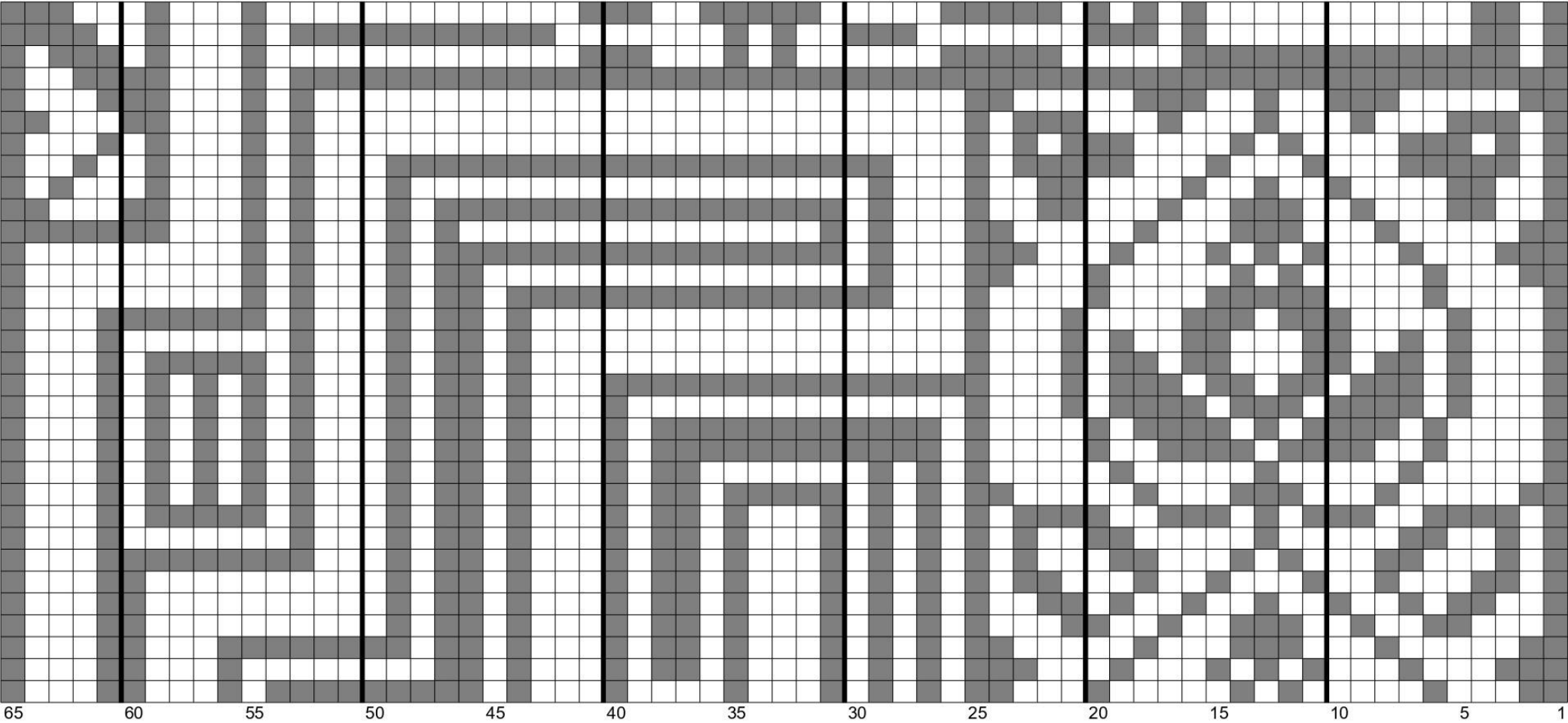
Part 1



MC

CC

Part 2

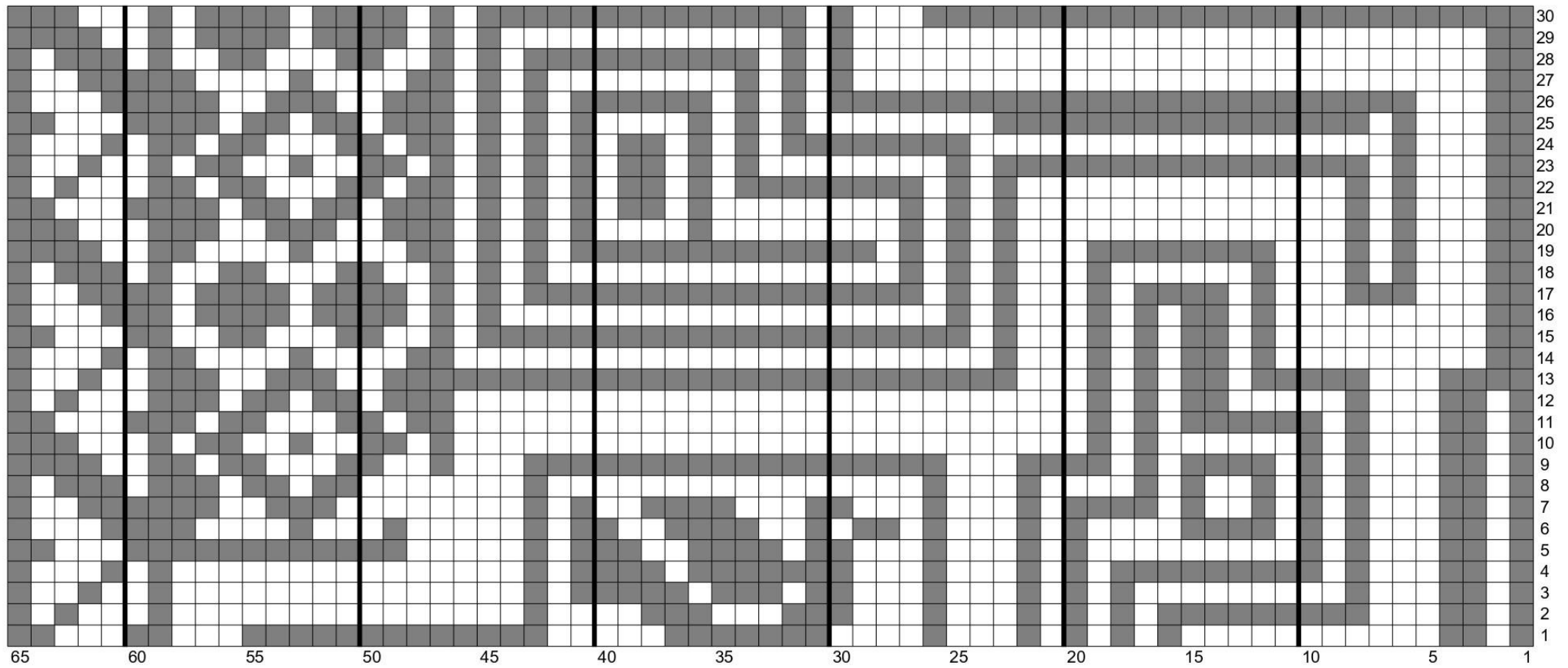


MC

CC

CHART F

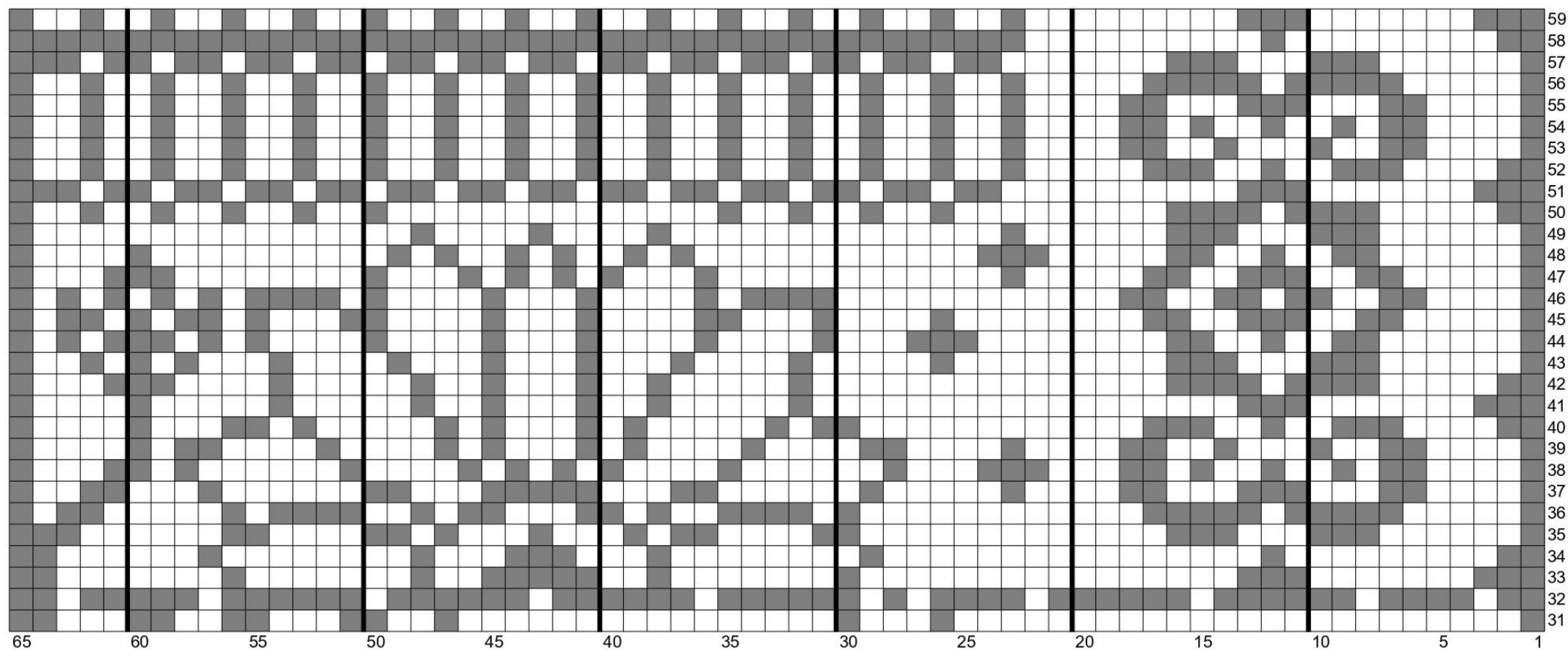
Part 1



MC

CC

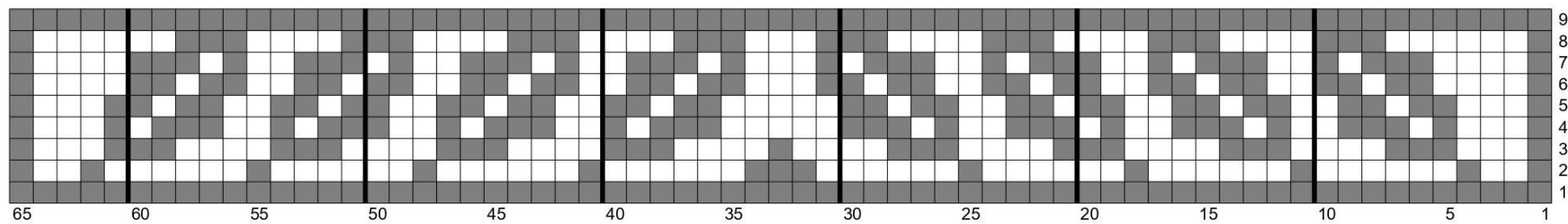
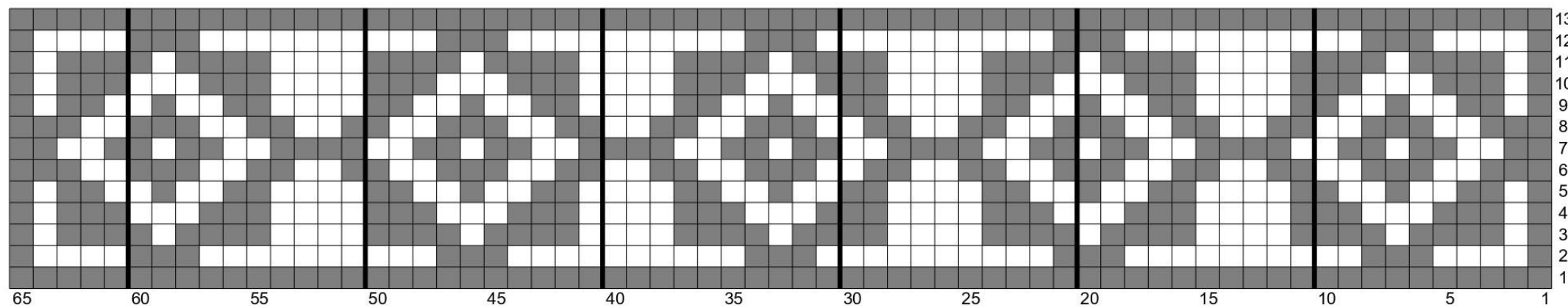
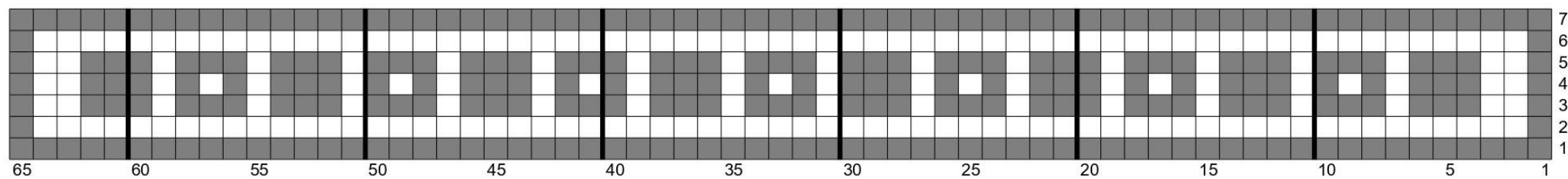
Part 2



MC

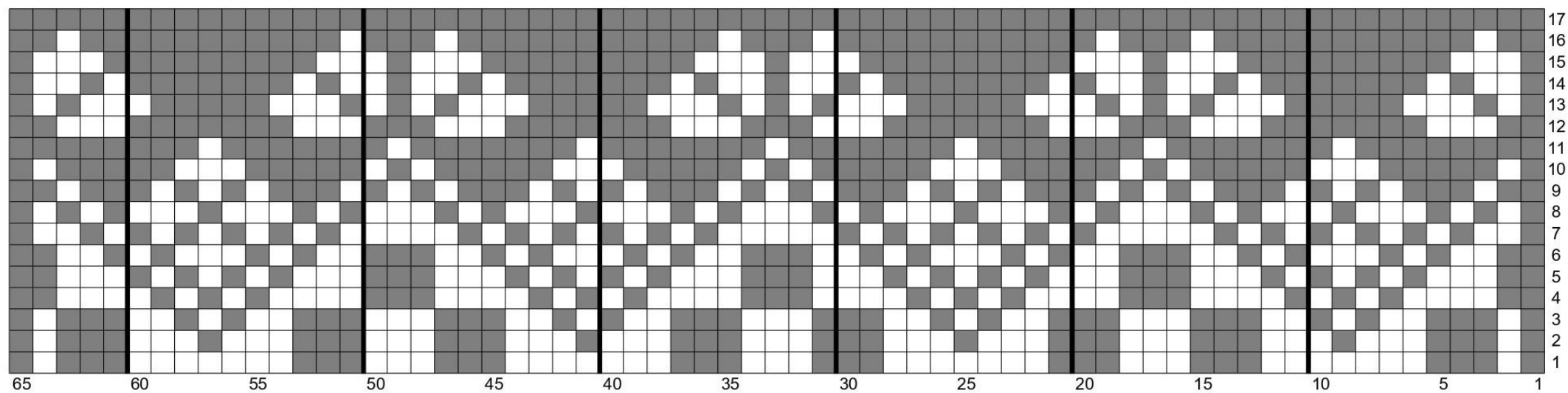
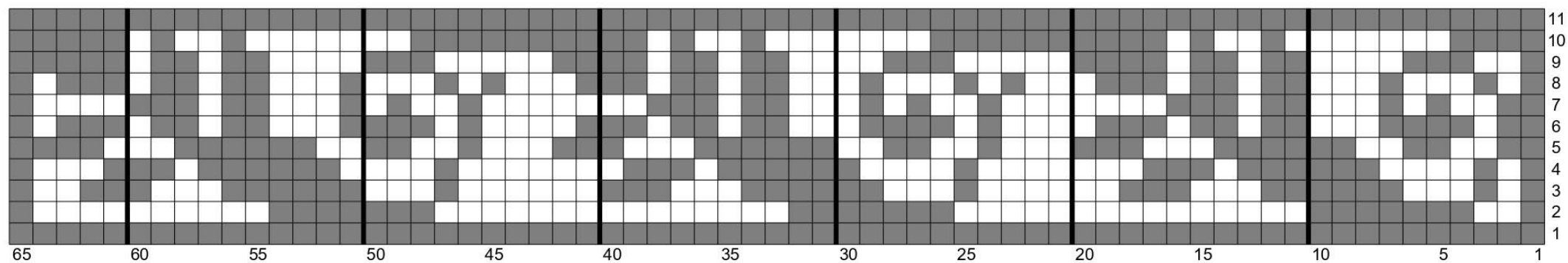
CC

Extra Charts



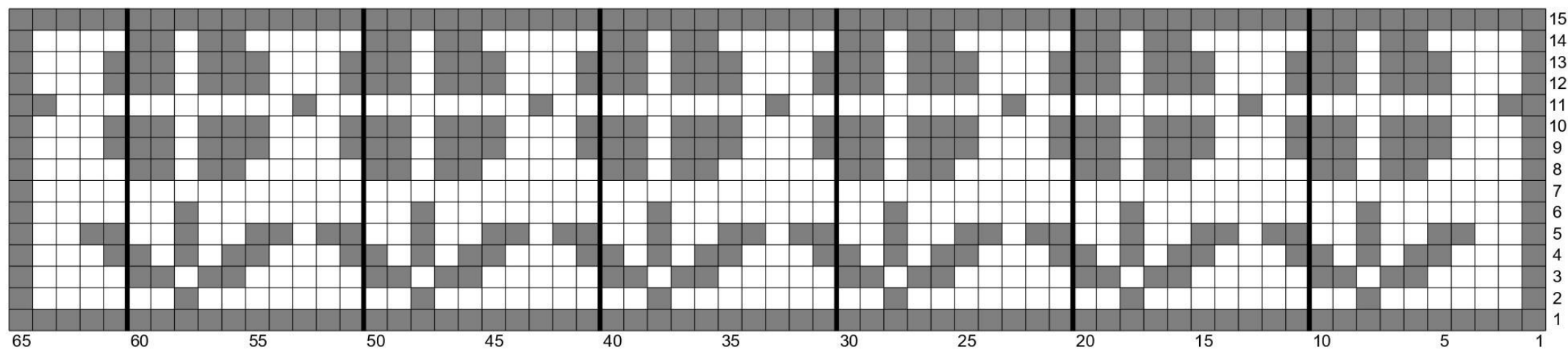
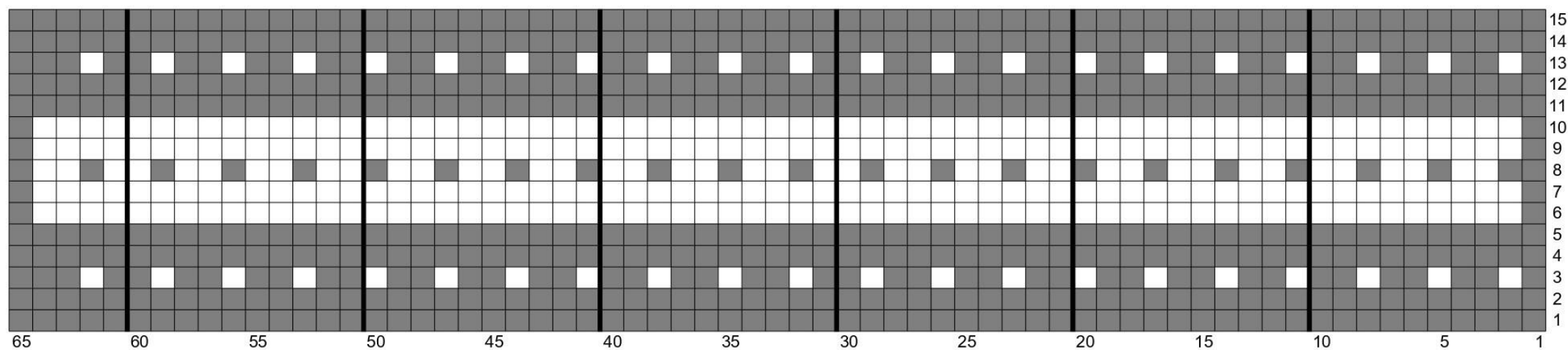
MC

CC



MC

CC



MC

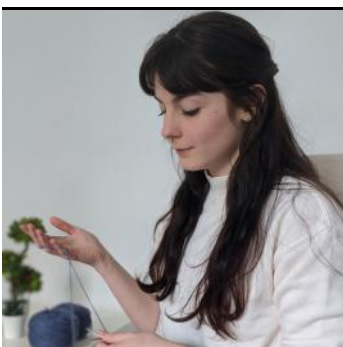
CC

Thank you

for choosing a Yarnflakes pattern !

I hope you enjoyed your project and will love the finished piece. If you have any questions or suggestions, please contact me on Ravelry (Yarnflakes).

I love to see you knit my designs. If you want to share pictures of your progress you can join me on my Ravelry group : www.ravelry.com/discuss/yarnflakes and tag me on Instagram @yarnflakes.



Find more designs :
www.ravelry.com/designers/audrey-borrego
www.payhip.com/yarnflakes

Patreon Yarnflakes

Instagram @yarnflakes
Ravelry @Yarnflakes