

Dark Sky Mittens



A charted mitten pattern for those who love stranded knitting. There is no designated left or right; the front and back are the same pattern.

Finished measurements are 11 inches from edge of cuff to tip of fingers. Laying flat they measure 3.5 inches across knuckles. Fits a medium sized hand.

Materials

Knit Picks Palette Abyss Heather: 125 yds

Knit Picks Palette white: 84 yds

Needles/Gauge

Size 2 dpns, Size 1 dpns

Gauge with size 2 needle is: 7 sts per inch in the round in pattern.

Other Supplies

Yarn needle. Stitch markers. Scrap yarn. Tape measure.

Instructions

Cuff: With size 2 needles and MC, C.O. 54 sts, PM, join in the round.

Row 1: k all sts

Row 2: p all sts

Row 3: k all sts

Row 4: p all sts

Row 5 and 6: k all sts

Start Chart A, working each row twice per round. (k 27 sts of pattern, PM, k 27 sts of the same row of the pattern.) After Chart A is worked you can remove the 2nd marker. With MC, knit 2 rounds plain.

Ribbing: Switch to size 1 needle, using MC

Row 1: (k1tb, p1) repete to end.

Repeat row 1 until the ribbing measures 1 inch.

Switch back to Size 2 needles, using MC, k 2 rounds plain.

Start Chart B. Follow the chart for 27 sts, PM, then repeat the same line of the chart, PM. Now knit Chart C line 1. Then continue to line 2 of Chart B, repeating it twice before working line 2 of Chart C. Continue in working from both charts for 19 rows.

After 19 rows of working both Charts B and C at the same time, put 19 sts of the thumb gusset on scrap yarn, and continue with Chart B only, knitting in the round, the chart twice for each round. Leave one marker after 27 sts.

Once you complete Chart B you will put the front 7 sts on one needle and the back 7 sts on another needle and work these closed with a kitchener st.

Thumb: place the 19 sts onto the size 2 dpns. PM. Continue Chart C on line 20. (Working right to left, pick up 1 sts from the space where the join was made in the mitten.) Continue working in the round until the end of the chart. Continue until the thumb measures 2 ¼" from where you picked up the stitch.

Decrease of thumb: Using MC, K2tog to the end of the row.

Pull the last 10 sts through on a yarn needle and pull yarn to the inside of the thumb.

Knit the second mitten the same as the first. Once you have completed both mittens, weave in all the ends and block.



Chart A - Cuff

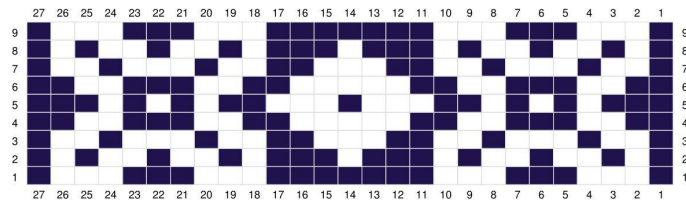


Chart B - Dark Sky Mitten

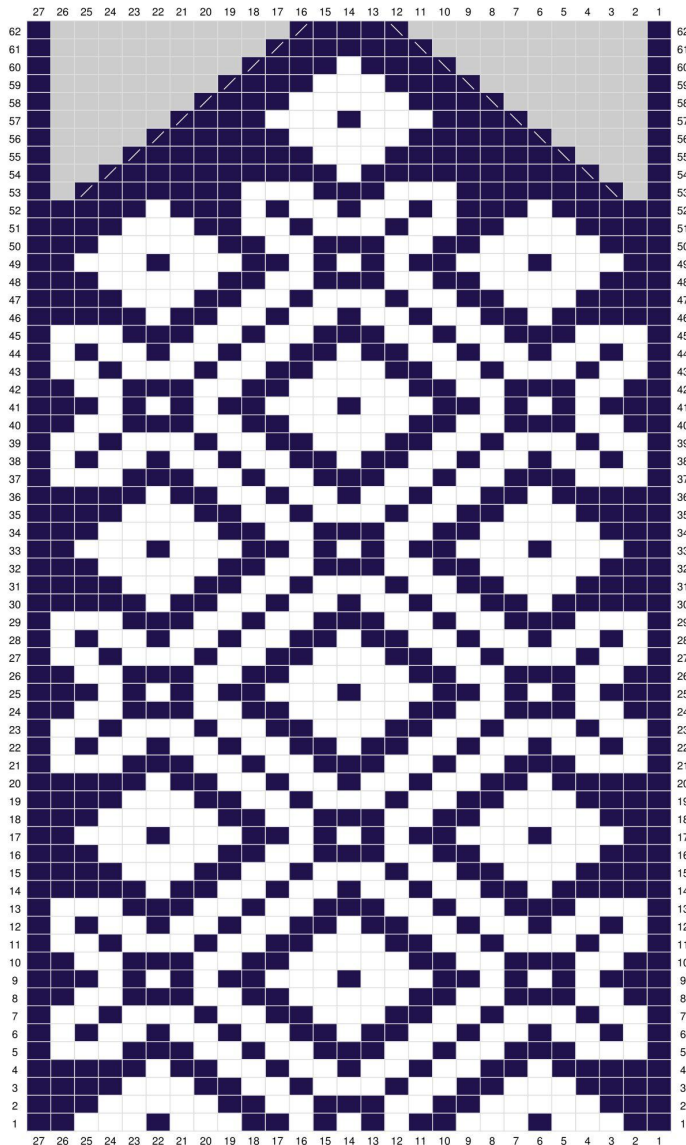
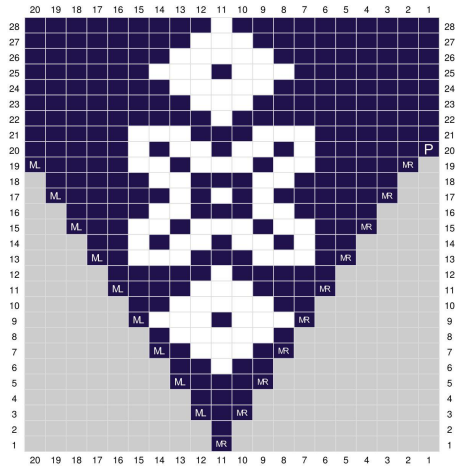


Chart C - Thumb/Gusset



-  Main Color
-  Contrasting Color
-  no stitch
-  ssk
-  k2tog
-  make one right
-  make one left
-  pick up stitch