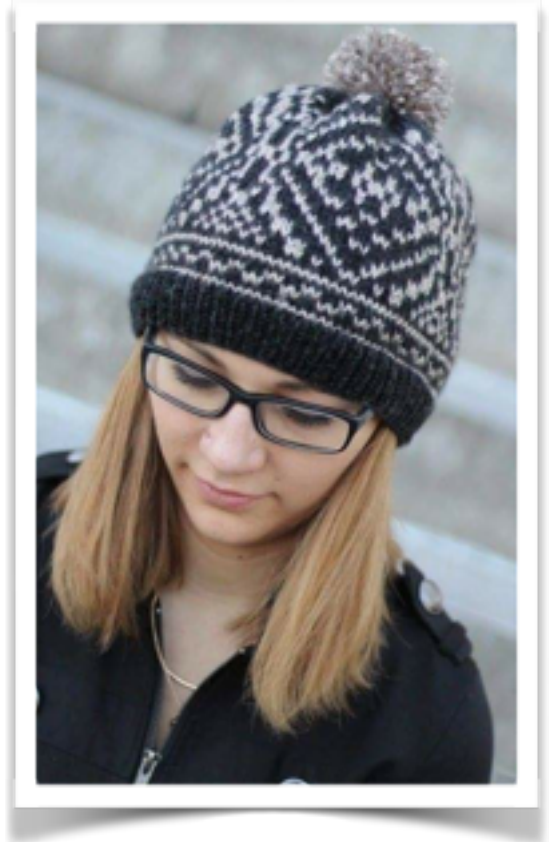


Danielle - Daniel hat



The directions below are for an average sized hat. Size can be adjusted by yarn and needle size. Pattern knitted circle around.

This design is unisex, good for men and women as well.

Skills needed: Cast on, knit, purl, decrease, Fair Isle knitting method (how to work with 2 different colors in same row)

Yarn used: 3.5 oz Lion Brand Heartland 2 different solid colors, @ half and half from both colors

100% acrylic, 4 - worsted weight, 251 yard, **Gauge:** 18s *24r = 4in* 4in

Needles: 5mm/ 8 US circular, or 5 double pointed needles

Stitch markers: 4 (see pattern for details)

Pompon maker (optional) crochet hook or tapestry needle

Abbreviations:

st: stitch

k: knit,

p: purl

k3tog: knit 3 stitches together

Cast on 112 stitches, join together. Place a stitch marker before the first stitch (optional, but recommended)

Border (10 rows) : k, p all around.

After border starts the chart: from row 1 until row 34. Work with two colors in same line, change them as directed by chart.

Place stitch markers after every 28 stitches (4 times)

Pattern repeats between red lines, 4 times.

After chart stitches will be decreased.

Row35: k3tog, k16, k3tog, k15, k3tog, k16, k3tog, k15, k3tog, k16, k3tog, k16

Row36: k every st until end of row

Row37: k3tog, k14, k3tog, k13, k3tog, k14, k3tog, k13, k3tog, k14, k3tog, k14

Row38: k every st until end of row

Row39: k3tog, k12, k3tog, k11, k3tog, k12, k3tog, k11, k3tog, k12, k3tog, k12,

Row40: k every st until end of row

Row41: k3tog, k10, k3tog, k9, k3tog, k10, k3tog, k9, k3tog, k10, k3tog, k10

Row42: k every st until end of row

Row43: k3tog, k8, k3tog, k7, k3tog, k8, k3tog, k7, k3tog, k8, k3tog, k8

Row44: k every st until end of row

Row45: k3tog, k6, k3tog, k5, k3tog, k6, k3tog, k5, k3tog, k6, k3tog, k6

Row46: k every st until end of row

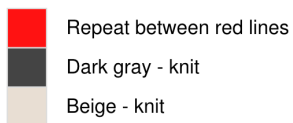
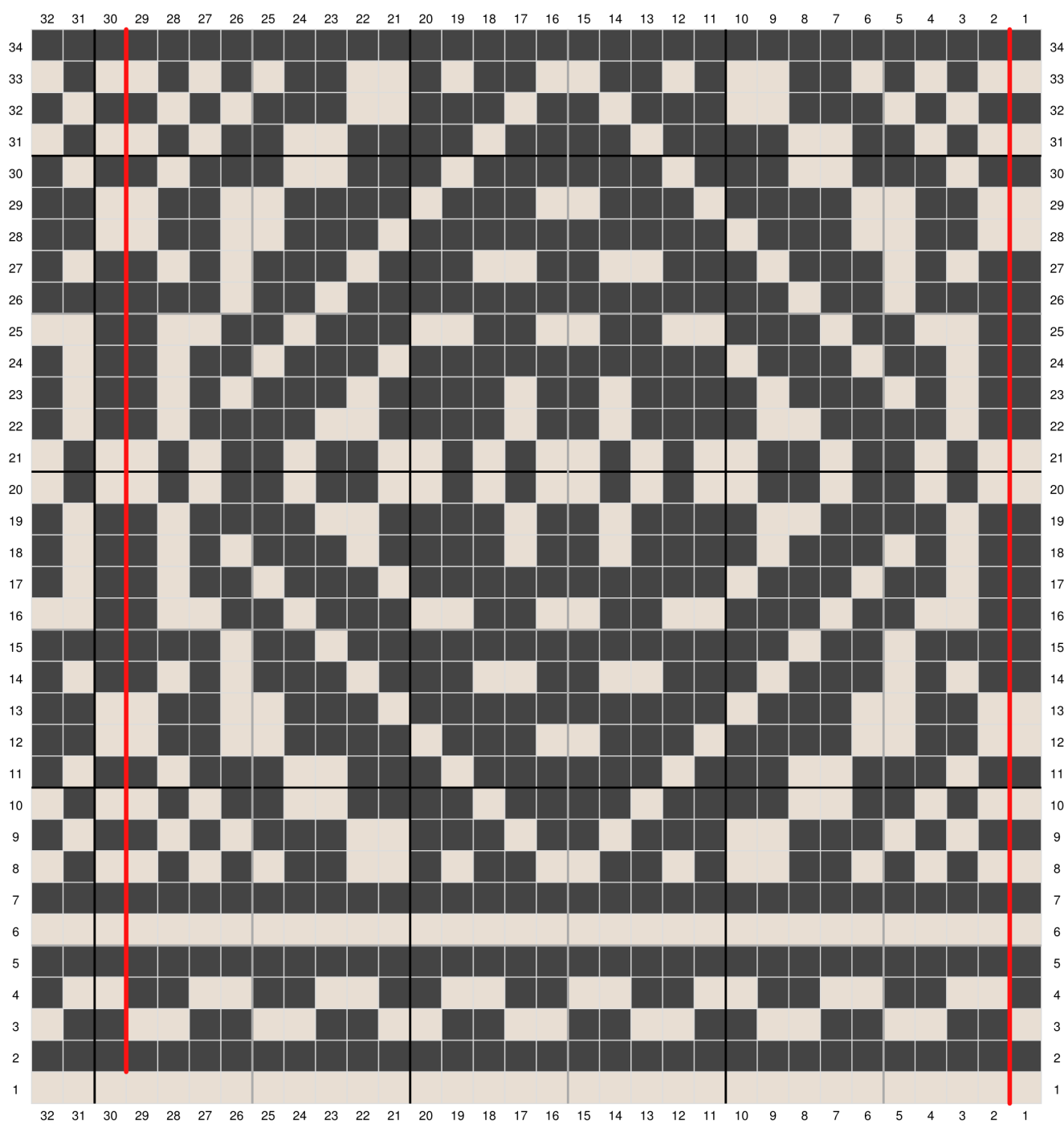
Row47: k3tog, k4, k3tog, k3, k3tog, k4, k3tog, k3, k3tog, k4, k3tog, k4

Row48: k every st until end of row

Row49: k3tog, k2, k3tog, k1, k3tog, k1, k3tog, k1, k3tog, k2, k3tog, k2

Weave through remaining stitches, removing stitches from knitting needle. Draw up tightly. Weave in loose ends.

Make a huge pompon and wave it on top of the hat.



Designed with Stitch Fiddle
www.StitchFiddle.com

Enjoy! <3

NikolettC

