

DALIUS HAT



DALIUS HAT © 2016 WENCHE ROALD

Dalius is a dala horse. Sweet and nice it is. And it is mine - my very own dala horse. It shows up a little here, and a little there in my design. Here it is combined with a traditional Norwegian stitch pattern. Also the simple and naive can be pretty cool, right? It's so fun to play with patterns and colors.

This pattern is in adult size. But if you knit with different yarn and/or gauge you can achieve a hat that fits a smaller or even a larger head.

SIZE AND MEASUREMENTS

One size to fit an adult head, 21¼"-22¾"/54-58cm. Actual size: 20½"/52 cm circumference above brim and 9½"/24cm tall from brim to crown

YARN

DK yarn in three colors: MC (dark blue): approx 90yds/82m, CC1 (red): approx 55yds/50m and CC2 (white): approx 51yds/46m

GAUGE

23 stitches and 28 rounds = 10cm/4" in stranded knitting on US 4/3.5mm needles

NEEDLES

US 2½/3mm and US 4/3.5mm 16-inch circular needles and US 4/3.5mm set of DPNs or long circular needle if you prefer using magic loop

NOTIONS

Stitch marker, tapestry needle for weaving in ends. If you like to have a pom-pom you'll need whatever tool you like best for making one.

ABBREVIATIONS

k = knit, **p** = purl, **BOR** = beginning of round, **CC1** = Contrasting Color 1, **CC2** = Contrasting Color 2, **CO** = cast on, **Dec** = decrease, **DPN** = double pointed needle, **k2tog** = knit two stitches together as one, **MC** = Main Color, **PM** = Place marker, **rnd(s)** = round(s), **st(s)** = stitch(es), **tbl** = through the back loop,

INSTRUCTIONS

BRIM

With your preferred method for cast-on, smallest needle size and CC1, CO 120 sts. PM to mark BOR and join for working in the round. Work ribbing as follows:

Rnd 1: *K1 tbl, p1; rep from * around.

Repeat last rnd until ribbing measures 1½"/4cm.

BODY

Change to larger needle size and follow the chart. Join in and cut colors as they are introduced in the chart. Work the pattern repeat 5 times per rnd. Work rnds 1-41 of chart once.

When the chart is finished continue with MC and work even in stockinette stitch until work measures 7½"/19cm.

SHAPE CROWN

NOTE: *Change to DPNs (or long circular needle) as needed.*

Dec rnd 1: *K6, k2tog; rep from * around (= 105 sts)

Next rnd: Knit

Dec rnd 2: *K5, k2tog; rep from * around (= 90 sts)

Next rnd: Knit

Dec rnd 3: *K4, k2tog; rep from * around (= 75 sts)

Next rnd: Knit

Dec rnd 4: *K3, k2tog; rep from * around (= 60 sts)

Next rnd: Knit

Dec rnd 5: *K2, k2tog; rep from * around (= 45 sts)

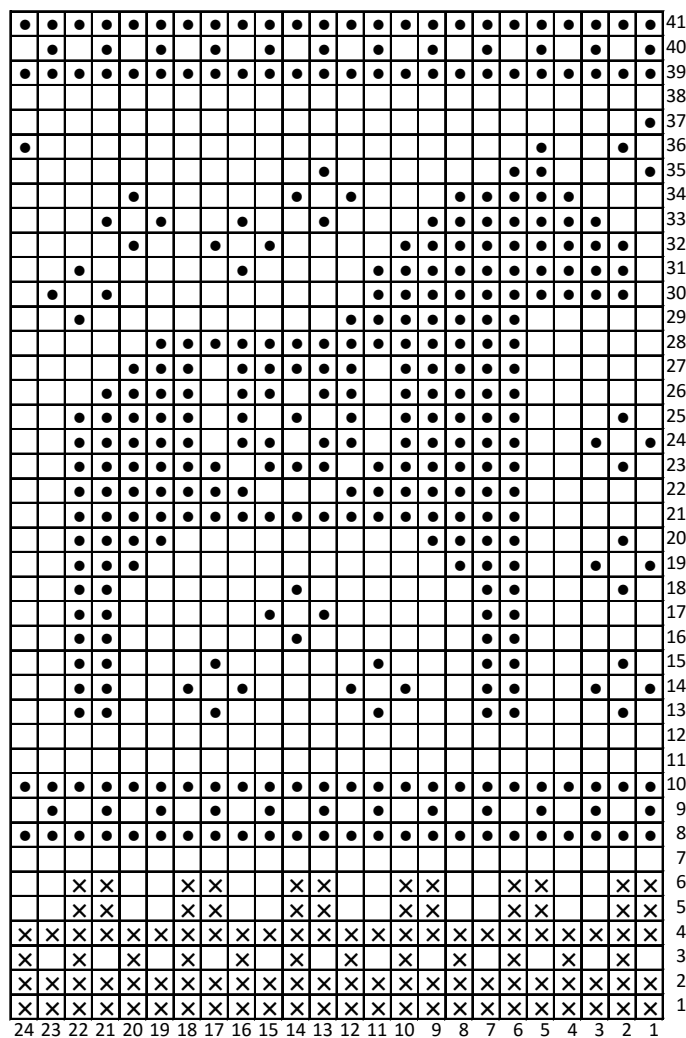
Next rnd: Knit

Dec rnd 6: *K1, k2tog; rep from * around (= 30 sts)

Next rnd: Knit

Dec rnd 7: *k2tog; rep from * around (= 15 sts)

Cut yarn and pull end through remaining sts. Weave in ends. If you like, make a pom-pom in CC1 and attach it to the hat. Soak the hat in a gentle wool wash. Block or just lay flat to dry.



□ MC
X CC1
● CC2

*I hope you did enjoy this free pattern.
Please feel free to post pictures of the hat
on e.g. your blog, facebook or instagram
(tag: #daliushat or #daliuslue(norwegian)).
And if so, I would appreciate if you refer to
the pattern and me as the designer.*

DALIUS HAT © 2016 WENCHE ROALD

