



Daisy and Iris or Knot (Cuff down)

by Lorraine Rayson

Some yarn full of glorious spring colours, just needed to be worked into a floral design.

These socks have been designed as fraternal, with daisies on one sock and irises on the other. If fraternal is not to your liking, pick and choose between the charts to create the pair of socks you want.

To fit with the floral theme a honeycomb motif for the sole, gusset and back of the leg was added.

I also wanted the pattern to be inclusive for knitters not wanting floral socks, so I chose a classic Celtic knot to fill that niche.

These stranded colourwork socks are worked cuff down with a choice of working a heel flap and gusset or a modified version of a Strong heel. The toe is a 'kind of' rounded wedge. There is a separate toe up pattern if you prefer that direction. A low vision accessible version of the cuff down (heel flap and gusset) pattern is also available for separate download.

Sizes

Adult – Small (Medium, Large1, Large2) – S-65 (M-73, L1-79, L2-85) sts
Finished circumference (approx) – 18 (20.5, 22, 23.5) cm/7.25 (8, 8.75, 9.5) inches.

Yarn

Fingering weight sock yarn in 2 colours with good contrast.
Allow 70-80 g for MC and 50-60 g for CC. For Daisy and Iris, a solid, semi-solid or tonal for MC and a busy (or a solid, semi-solid or tonal) colourway for CC would work well. For the Knot socks, a solid, semi-solid or tonal would work well for both colourways.

Gauge (worked in the round and measured after washing and laying flat to dry)
36 sts/40 rounds = 10 cm/4 inches over stranded colourwork.

Needles (for working small circumference in the round)
2.25 mm/US1 needles (or size required to achieve gauge). If working the heel flap and gusset you will need a second needle.

Notions

Stitch markers (BOR, back markers (bm) and 2 removable markers), plus your normal collection of notions.

NOTES

Sizing information

Choose a size to give you approximately 10% negative ease in circumference (measure foot circumference and multiply by 0.9).

I knit non-stranded colourwork socks on 2.25 mm/US1 needles with 60-64 sts, and for stranded colourwork socks I use the same needle size but with 70-72 sts.

Pattern notes

The pattern is written using stitch markers to separate sections of the sock, therefore the pattern can be easily adapted for use with any configuration of needles and your stitches arranged as preferred. Slip markers as required.

The ϕ symbol is used within the pattern to indicate that further information is available in the techniques and resources sections on [p 3](#).

Measurements are rounded to the closest full or half cm / full or quarter inch.

Read the pattern through before starting.

Colour work knitting

When knitting stranded colourwork, be consistent with your strand orientation. If your MC crosses above your CC at the back of your work, keep it that way throughout your project. ϕ

Working your socks inside out helps with better tension/float lengths. ϕ

LBJ is a good technique for catching long floats and allowing stretch. ϕ

It is generally recommended to catch floats longer than 2.5 cm/1 inch – personally I find these floats too long and prefer to catch floats every 3-5 stitches. How many stitches you have before catching a float is up to you.

When making increases in colourwork, lift the bar of the same colour yarn as you are making the increase with.

Charts

All charts have fully written instructions.

There are two sets of charts – one set with dark MC and the other set with light MC

LBJ lines have been included in the charts if you choose to use this technique. LBJ lines are included only where there are more than 4 stitches of one colour – LBJ lines are, at times, continued up the chart so that the LBJ stitch can be closed with a stitch of the same colour.

Pattern layout and printing information

The charts and chart written instructions are located after the pattern instructions. The printing guide below allows you to choose which pages you need.

I would recommend printing the heel chart on a separate page to any other charts so that you do not have to flip the page.

Pattern						
Strong heel	– p 1-6 and 10-11					
Heel flap and gusset	– p 1-4 and 7-11					
Charts	Daisy and Iris	Knot	Strong heel			Heel flap and gusset
			Small	Medium	L1, L2	
Dark MC	– p 13-14	– p 15	– p 16	– p 16-17	– p 16, 18	– p 19
Light MC	– p 20-21	– p 22	– p 23	– p 23-24	– p 23, 25	– p 26
Chart written instructions	– p 27-31	– p 32	– p 33-35			– p 36

Abbreviations

BOR – beginning of round
CC / MC – contrast colour / main colour
RS / WS – right side / wrong side
st / sts – stitch / stitches
wyib / wyif – with yarn in back / front
[] – repeat instructions

markers

sm – slip marker
bm – back marker

basic stitches

k – knit
p – purl

sl – **slip stitch** – (**RS**) slip stitch purlwise wyib; (**WS**) slip stitch purlwise wyif

increases/decreases

m1L – **make 1 left** – insert left needle from front lifting the bar between the current and the next stitch; through back loop (1 st increased)
m1R – **make 1 right** – insert left needle from back lifting the bar between the current and next stitch; knit through front loop (1 st increased)
RLlφ – **right lifted increase** – insert right needle from front into purl bump of stitch on left needle; knit; alternative method; pick up right leg of stitch below the next stitch on left needle and knit (1 st increased)
k2tog – **knit 2 together** – knit 2 stitches together (1 st decreased)
p2tog – **purl 2 together** – purl 2 stitches together (1 st decreased)
ssk – **slip slip knit** – slip 2 stitches knitwise, one at a time; knit slipped stitches together through back loops (1 st decreased)

other stitches

LBJφ – ladder back jacquard
TSφ – twin stitch

Techniques

LBJφ – ladder back jacquard

Creating LBJ stitches – work to where you want to catch the float yarn; bring working yarn to front of work between needles; with float yarn create a LBJ stitch by working a backwards loop cast on; take working yarn to back of work between needles.

Working LBJ stitches – bring working yarn to front of work between needles; with float yarn knit (or purl) LBJ stitch; take working yarn to back of work between needles.

Closing LBJ stitches – close LBJ stitches by working the LBJ stitch together with a stitch of the same colour, where possible. Close LBJ stitches, when required, by working either a k2tog (work LBJ stitch with next stitch) or a ssk (sl1, slip LBJ stitch, knit together through back loops).

TSφ – twin stitch

RS – knit to where you want to make a twin stitch. Work a RLI; pass the newly created stitch to left needle; turn.

WS – purl to where you want to make a TS. Slip next stitch from left needle to right needle; insert left needle tip, from below up through the head of the purl bump just below the needle; purl. Pass the newly created stitch and the slipped stitch together back to left needle; turn.

Resources

Colour dominance (Knit Purl Hunter)
Finchley Graft (Roxanne Richardson)
German twisted cast on (Roxanne Richardson)
Knitting inside out (KnittyMelissa)
LBJ video (Northwest Yarns) or blog (Ysolda)
Lifted increases (Arenda Holiday)
Paired Lifted Increases (Roxanne Richardson)
Shadow wrap short rows (Patty Lyons)

PATTERN INSTRUCTIONS

Cuff

With MC and using German twisted cast on[†] (or another comparable method), cast on 64 (72, 80, 84) sts.

Place a BOR marker and join to work in the round being careful not to twist your stitches.

Work either 1×1 or 2×2 ribbing for 20 rounds or until desired length.

Next Round:

Small (Medium, Large2): K1, m1R, knit to end of round. (1 st inc) **65 (73, 85) sts**

Large1: K1, k2tog, knit to end of round. (1 st dec) **79 sts**

Knit 1 round.

Leg

For one sock use main charts-Daisy A and B (or Knot) and for the other sock use Iris A and B (or Knot).

The floral socks are designed for one sock to use Daisy A and B, floral panel and honeycomb charts and the other sock to use Iris A and B, floral panel and honeycomb charts. The Knot socks are designed to use Knot, knot panel and diamond charts on both socks.

The 5 main charts (Daisy A and B, Iris A and B and Knot) are interchangeable with each other as are the 2 panel charts. The honeycomb/diamond charts can also be interchanged, so you can pick and choose which charts you would prefer to use. Although the charts are interchangeable, note that the number of rows in the Knot charts differ to the Daisy and Iris charts.

The honeycomb/diamond chart is worked 3 (2, 3, 3) times plus stitches 1-5 again.

Work as follows:

Small: CC k1, work main chart A (or Knot), panel chart, main chart B (or Knot), CC k1, place back marker (bm), work honeycomb/diamond chart to end of round.

Medium, Large1 and Large2: Work panel chart, main chart A (or Knot), panel chart, main chart B (or Knot), panel chart, place back marker (bm), work honeycomb/diamond chart to end of round.

You have 42 (56, 56, 62) sts between BOR and bm and 23 (17, 23, 23) sts between bm and BOR.

Depending on which heel you plan on working, continue working leg as established, until your work is approximately:

Strong heel: 7 (8.5, 9.5, 9.5) cm/2.75 (3.5, 3.75, 3.75) inches less than desired leg length (cuff to heel turn) – when you have reached desired length proceed to Strong heel instructions on [p 5](#).

Heel flap and gusset: 6.5 cm/2.5 inches less than desired leg length proceed to heel flap and gusset instructions on [p 7](#).

Strength lies in differences, not in similarities.
— Stephen Covey

Strong Heel

Maintain the honeycomb/diamond pattern as you increase the heel. Use heel increase chart in conjunction with instructions below.

On p 12 is an example of how to “work the honeycomb chart as per stitch number” which you may find helpful.

All heel increases are worked immediately after the bm and before the BOR as follows:

Round 1: Work as established to bm, sm, MC m1R, work honeycomb/diamond chart to end of round, MC m1L. (2 sts inc)

Round 2: Work as established to bm, sm, MC k1, work next row of honeycomb/diamond chart to 1 stitch before end of round, MC k1.

Repeat rounds 1 and 2 until you have 53 (53, 61, 61) sts between bm and BOR stopping after working round 1. (30 (36, 38, 38) sts inc) **95 (109, 117, 123) sts**

Make a note of which honeycomb/diamond chart row you have just worked _____.

Heel turn

Place a removable marker on the centre heel stitch.

Shadow wrap short rows are used to create twin stitches (TS)^φ, remember to turn after making a TS.

The heel turn is work back and forth in MC.

The next round is worked to eliminate the unsightly blips of colour that can occur when working decreases in colourwork on this type of heel.

Next Round: Work as established to bm. Make a note of which main chart row you have just worked _____.

Leave CC yarn here – we will come back to it at the start of the heel decreases.

With MC knit to 1 stitch before end of round closing any LBJ^φ stitches, if required, make TS.

Row 1 (WS): Purl to 1 stitch before bm, make TS.

Row 2 (RS): Knit to centre heel marker, remove marker, knit centre heel stitch, k2, ssk, k1, turn. (1 st dec)

Row 3: Sl1, p6, p2tog, p1, turn. (1 st dec)

Row 4: Sl1, knit to 1 stitch before gap, ssk, k1, turn. (1 st dec)

Row 5: Sl1, purl to 1 stitch before gap, p2tog, p1, turn. (1 st dec)

Repeat rows 4 and 5 until you have 31 (31, 35, 35) sts between bm and BOR – the TS is the only stitch left unworked each side of the heel turn stitches. **73 (87, 91, 97) sts**



Life is about choices. Some we regret, some we're proud of. Some will haunt us forever.
The message: We are what we chose to be.
— Graham Brown

Strong heel instructions continued

Foot and heel decreases

Begin working in the round again with both yarns. Maintain the honeycomb/diamond pattern as you decrease. Use heel decrease chart in conjunction with instructions below:

Round 1 (RS): Sl1, starting with stitch 5 (2, 3, 3) work the honeycomb/diamond chart (that corresponds to the main chart row you noted above) to 1 stitch before gap, MC k2tog. (1 st dec)

Round 2: Work as established to bm, sm, MC ssk, starting with stitch 5 (2, 3, 3) work honeycomb/diamond chart to 1 stitch before end of round, MC k1. (1 st dec)

Round 3: Work as established to bm, sm, MC ssk, continue working honeycomb/diamond chart to 2 stitches before end of round, MC k2tog. (2 sts dec)

Round 4: Work as established to bm, sm, MC k2, continue working honeycomb/diamond chart to 2 stitches before end of round, MC k2.

Repeat rounds 3 and 4 until you have 23 (17, 23, 23) sts between bm and BOR.

65 (73, 79, 85) sts

Continue as established until foot is approximately 5.5 (6.5, 5.5, 6.5) cm/ 2.25 (2.5, 2.25, 2.5) inches short of desired finished length, then continue to toe instructions on p 10.



Heel flap and gusset

Heel set-up

Maintain the honeycomb/diamond pattern as you increase the heel. Use heel increase charts in conjunction with instructions below, if required.

On p 12 is an example of how to “work the honeycomb chart as per stitch number” which you may find helpful.

Work as established to bm, sm, then work the following instructions to end of round.

Small (Large1, Large2)

Round 1: MC m1R, starting with stitch 1 work honeycomb/diamond chart to end of round, MC m1L. (2 sts inc)

Round 2: MC k2, starting with stitch 2 work next row of honeycomb/diamond chart to 2 stitches before end of round, MC k2, catching your CC close to the last stitch worked, if required. You have 25 sts between bm and BOR. **67 (81, 87) sts**

Medium

Round 1: MC m1R, starting with stitch 1 work honeycomb/diamond chart to end of round, MC m1L. (2 sts inc)

Round 2: MC m1R, starting with stitch 6 work honeycomb/diamond chart to end of round, MC m1L. (2 sts inc)

Round 3: MC m1R, starting with stitch 5 work honeycomb/diamond chart to end of round, MC m1L. (2 sts inc)

Round 4: MC m1R, MC k1, starting with stitch 5 work honeycomb/diamond chart to 2 stitches before end of round, MC k1, MC m1L. (2 sts inc)

Round 5: MC k2, starting with stitch 5 work next row of honeycomb/diamond chart to 2 stitches before end of round, MC k2, catching your CC close to the last stitch worked, if required. You have 25 sts between bm and BOR. **81 sts**



Heel

Make a note of which main chart row you have just worked _____ (for sock 2).

The heel is worked over the central 23 stitches between bm and BOR.

The heel incorporates both the heel flap and heel turn.

The heel flap and heel turn are worked with MC in Eye of Partridge stitch pattern.

After row 1 of the heel flap, work the remainder of the heel on a separate needle (heel needle) to the needle holding the other stitches (holding needle).

Heel flap

Turn your work so that the WS is facing you and using MC, work back and forth as follows:

Row 1 (WS): Sl2, purl to 1 stitch before bm, closing any LBJ^φ stitches as you come to them, turn.

Using a separate needle (heel needle) continue working the heel flap as follows:

Row 2 (RS): [Sl1, k1], to 2 stitches before end of round, k1, turn.

Slip the first stitch after bm and the stitch before BOR to holding needle. This leaves you with 23 sts on heel needle.

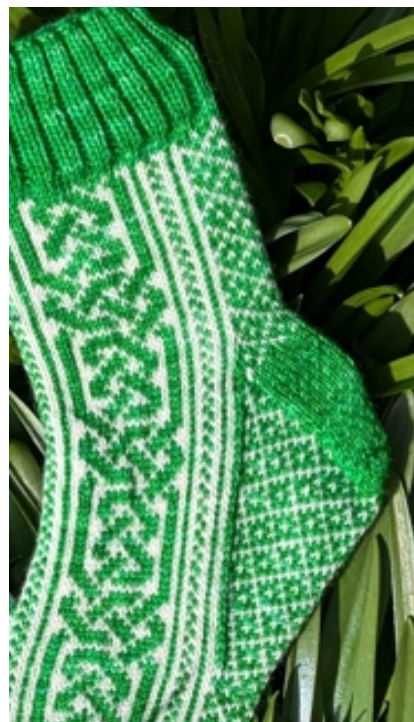
Row 3: Sl1, purl to end of heel needle, turn.

Row 4: Sl1, [sl1, k1] to end of heel needle, turn.

Row 5: Sl1, purl to end of needle, turn.

Row 6: [Sl1, k1], to 1 stitch before end of heel needle, k1, turn.

Repeat rows 3-6 until heel flap is 6.5 cm/2.5 inches, or desired length, ending after working a RS row.



Heel turn

Row 1 (WS): Sl1, p13, p2tog, p1, turn. (1 st dec)

Row 2 (RS): Sl1, [k1, sl1] 3 times, ssk, k1, turn. (1 st dec)

Row 3: Sl1, purl to 1 stitch before gap, p2tog, p1, turn. (1 st dec)

Row 4: Sl1, [k1, sl1] to 1 stitch before gap, ssk, k1, turn. (1 st dec)

Repeat rows 3 and 4 until all stitches of the heel have been worked ending on a RS row. You have 15 sts on this needle.

Cut MC leaving a tail long enough to weave in later.

It is not our differences that divide us. It is our inability to recognize,
accept, and celebrate those differences.
— Audre Lorde

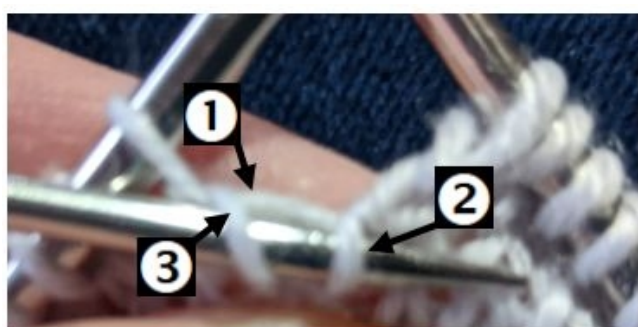
Gusset

The technique for avoiding gaps between the heel flap and instep described below uses Charlene Schurch's method of paired lifted increase[†] and is shown in the linked video starting at the 7.23 minute mark.. Figure 1 below shows the individual steps involved for this technique.

Working with MC and using the holding needle, work a pair of lifted increases between the last stitch on the holding needle and the first heel flap stitch (steps 1-3), place a temporary marker, pick up and knit 1 stitch in each slipped stitch on the side of the heel flap, place another temporary marker, k15 heel stitches, pick up and knit 1 stitch in each slipped stitch on the side of the heel flap, work a pair of lifted increases between the last heel flap stitch and the first stitch on the holding needle, k1.

Count how many stitches you have between the 2 temporary markers _____.

Figure 1



Step 1: Following the strand of yarn that goes between the last stitch on the holding needle and the first heel flap stitch, insert a needle and pick up the 2 legs.

Step 2: Ktbl the first stitch

Step 3: Knit the second stitch

Step 4: On the next round, work the paired increases together – ssk before instep, k2tog after instep

Begin working in the round again with both yarns as follows:

Round 1: Work as established to bm, sm, MC k1, MC k2tog, looking at the table below start working the honeycomb/diamond chart from the stitch number which corresponds to your count between the temporary markers to 3 stitches before end of round, MC ssk, MC k1. (2 sts dec) Remove both temporary markers as you come to them.

Size	stitch count between temporary markers					
	10, 16, 22	11, 17, 23	12, 18, 24	13, 19, 25	14, 20, 26	15, 21, 27
S, L1, L2	Stitch 1	Stitch 6	Stitch 5	Stitch 4	Stitch 3	Stitch 2
M	Stitch 4	Stitch 3	Stitch 2	Stitch 1	Stitch 6	Stitch 5

Maintain the honeycomb/diamond pattern as you decrease the gusset. Use gusset decrease chart in conjunction with instructions below.

Round 2: Work as established to bm, sm, using the gusset decrease chart work the even chart row (row 2, 4, 6, 8, 10 or 12) which starts with the same stitch as worked in round 1. For example, if in round 1 you started the honeycomb/diamond chart with stitch 4, you would work row 6 of the gusset decrease chart.

Round 3: Work as established to bm, sm, work next row of gusset decrease chart.

Continue working gusset decrease chart until you have 23 (17, 23, 23) sts left between bm and BOR.

65 (73, 79, 85) sts

Continue as established until foot is approximately 5.5 (6.5, 5.5, 6.5) cm/ 2.25 (2.5, 2.25, 2.5) inches short of desired finished length.

Toe

Cut CC leaving a tail long enough to weave in later.

With MC work toe as follows:

Small

Round 1: Knit closing any LBJ stitches[♠].

Round 2: Remove BOR marker, k5, replace BOR marker, knit to bm, remove marker, knit to end of round.

Round 3: [k9, k2tog] 5 times, knit to end of round. (5 sts dec)

60 sts

Rounds 4-5, 7-8, 10-11, 13-14, 16-17, 19, 21: Knit.

Round 6: [k8, k2tog] 6 times. (6 sts dec)

Round 9: [k7, k2tog] 6 times. (6 sts dec)

Round 12: [k6, k2tog] 6 times. (6 sts dec)

Round 15: [k5, k2tog] 6 times. (6 sts dec)

Round 18: [k4, k2tog] 6 times. (6 sts dec)

Round 20: [k3, k2tog] 6 times. (6 sts dec)

Round 22: [k2, k2tog] 6 times. (6 sts dec)

18 sts

Graft toe using the Finchley Graft[♠] (or another comparable method).



Medium

Round 1: Knit closing any LBJ stitches[♠].

Round 2: Remove BOR marker, k9, replace BOR marker, k11, k2tog, knit to bm, remove marker, knit to end of round. (1 st dec)

72 sts

Round 3: [k10, k2tog] 6 times. (6 sts dec)

66 sts

Rounds 4-5: Knit.

Round 6: [k9, k2tog] 6 times. (6 sts dec)

60 sts

Rounds 7-25: Work rounds 4-22 as for size Small.

18 sts

Graft toe using the Finchley Graft[♠] (or another comparable method).



Large1

Round 1: Knit closing any LBJ stitches^φ.

Round 2: Remove BOR marker, k8, replace BOR marker, knit to bm, remove marker, knit to end of round.

Round 3: [K8, k2tog] 7 times, knit to end of round. (7 sts dec). **72 sts**

Rounds 4-5, 7-8, 10-11, 13-14, 16-17, 19, 21: Knit

Round 6: [k7, k2tog] 8 times. (8 sts dec)

Round 9: [k6, k2tog] 8 times. (8 sts dec)

Round 12: [k5, k2tog] 8 times. (8 sts dec)

Round 15: [k4, k2tog] 8 times. (8 sts dec)

Round 18: [k3, k2tog] 8 times. (8 sts dec)

Round 20: [k2, k2tog] 8 times. (8 sts dec)

Round 22: [k1, k2tog] 8 times. (8 sts dec) **16 sts**

Graft toe using the Finchley Graft^φ (or another comparable method).



Large2

Round 1: Knit closing any LBJ stitches^φ.

Round 2: Remove BOR marker, k10, replace BOR marker, knit to bm, remove marker, knit to end of round.

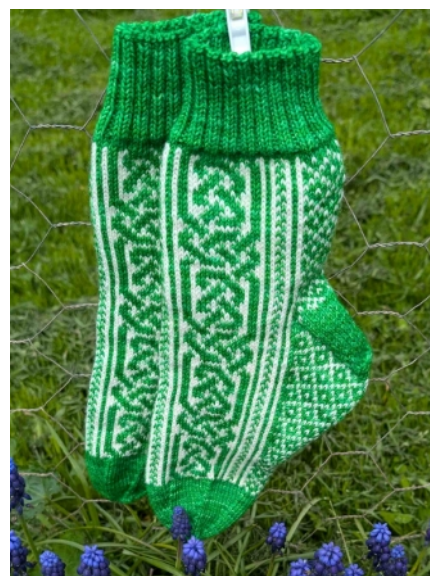
Round 3: [K9, k2tog] 5 times, knit to end of round. (5 sts dec). **80 sts**

Rounds 4-5: Knit

Round 6: [k8, k2tog] 8 times. (8 sts dec) **72 sts**

Rounds 7-25: Work rounds 4-22 as for size Large1. **16 sts**

Graft toe using the Finchley Graft^φ (or another comparable method).



Finishing

Weave in your ends, block and enjoy your socks.

The world has only one border. It is called humanity.
The differences between us are small compared to our shared humanity.
Put humans first.
— Nadia Murad

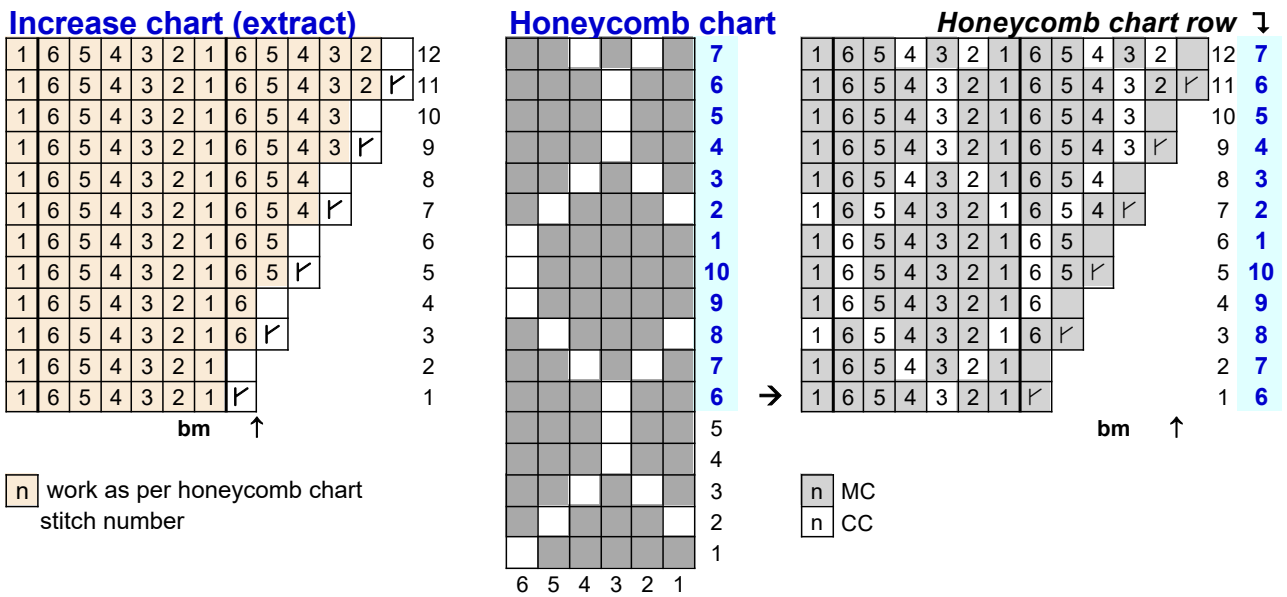
Acknowledgements

Sincere thanks to those who tested the pattern and provided valuable feedback.

A huge thanks also to Condichick, yarnymama and yalta for their valued advice, guidance, feedback and encouragement.

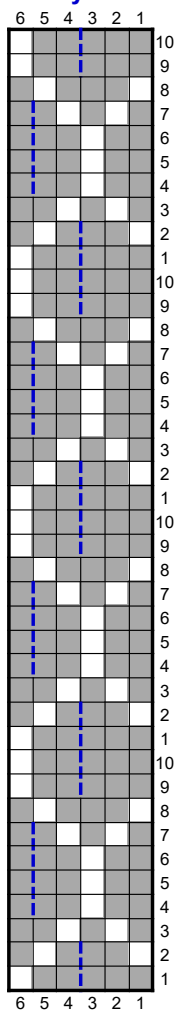
Example: how to “work the increase and honeycomb charts as per stitch number”

The example depicts how to work the honeycomb chart into an increase chart.
The scenario for the example below is:
Row 5 of the honeycomb chart has just been completed and on the next round the increases start.
This means that the first row of the increase chart needs to be worked as per row 6 of the honeycomb chart.
The example on the right shows what the chart looks like with yellow as MC and purple as CC – as the saying goes “a picture is worth a thousand words”.

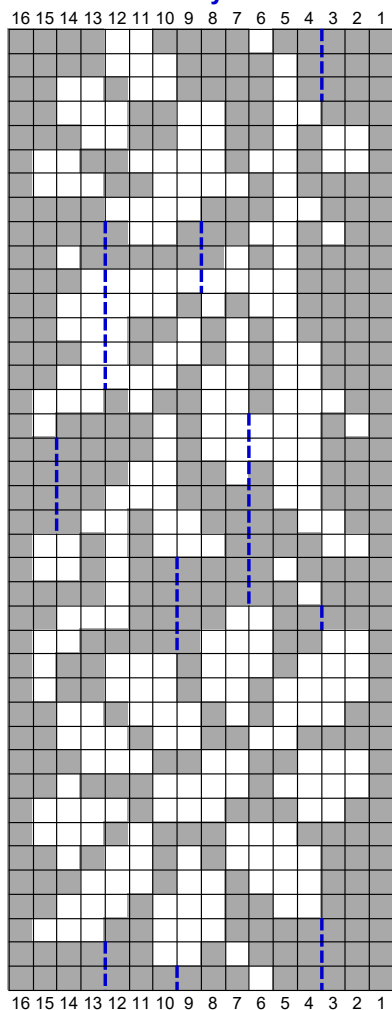


CHARTS – Dark MC – Daisy charts

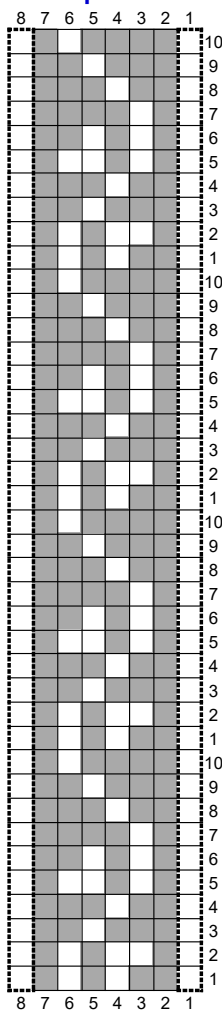
Honeycomb



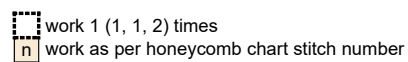
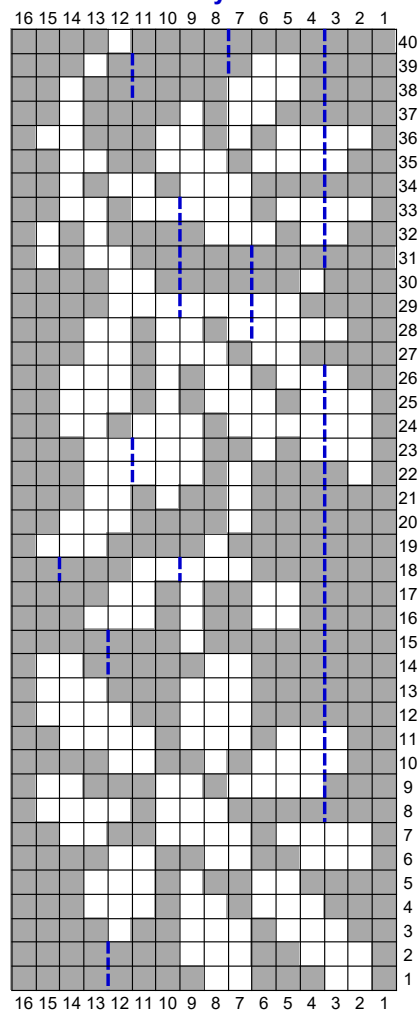
Main chart – Daisy B



Floral panel



Main chart – Daisy A

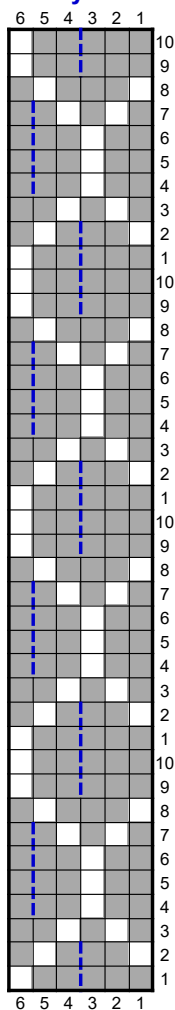


Notes

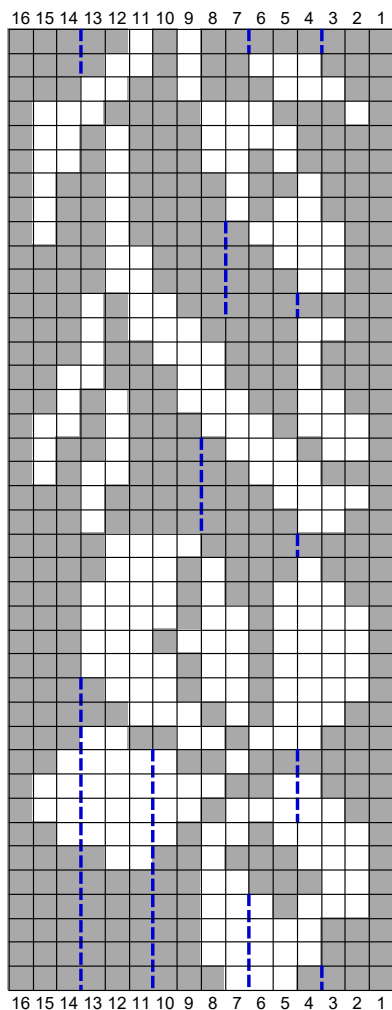
- heel increases/flap started leg chart row _____
- last leg chart row worked on instep, before starting heel _____

CHARTS – Dark MC – Iris charts

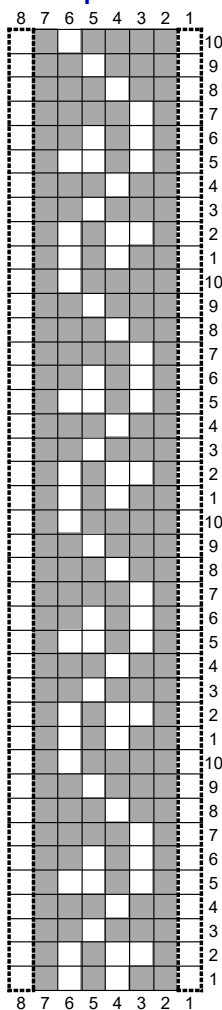
Honeycomb



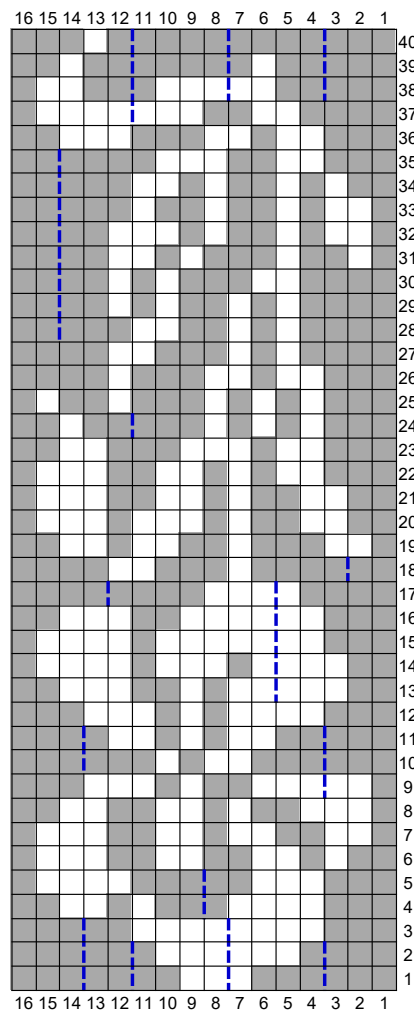
Main chart – Iris B



Floral panel



Main chart – Iris A

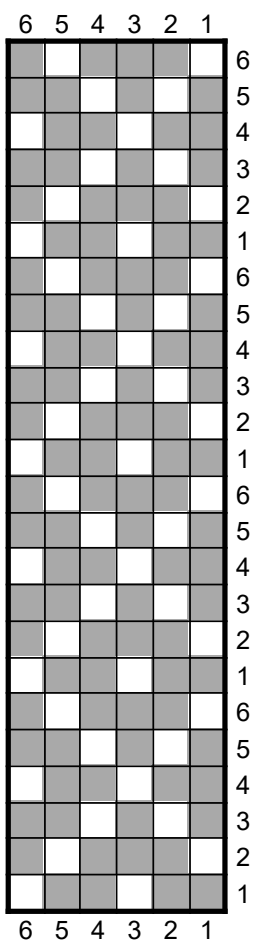


Notes

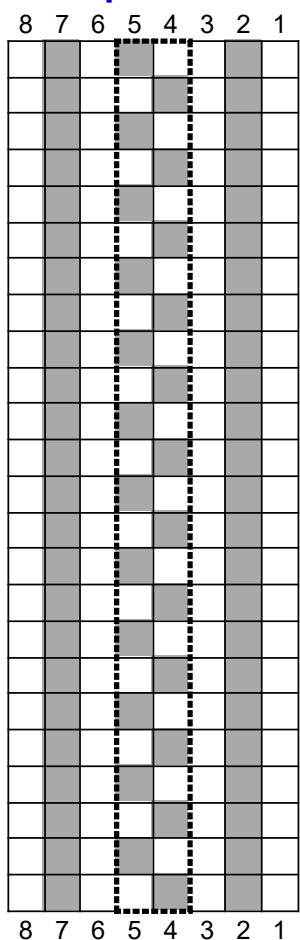
- heel increases/flap started leg chart row _____
- last leg chart row worked on instep, before starting heel _____

CHARTS – Dark MC – Knot charts

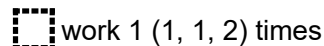
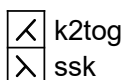
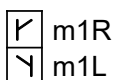
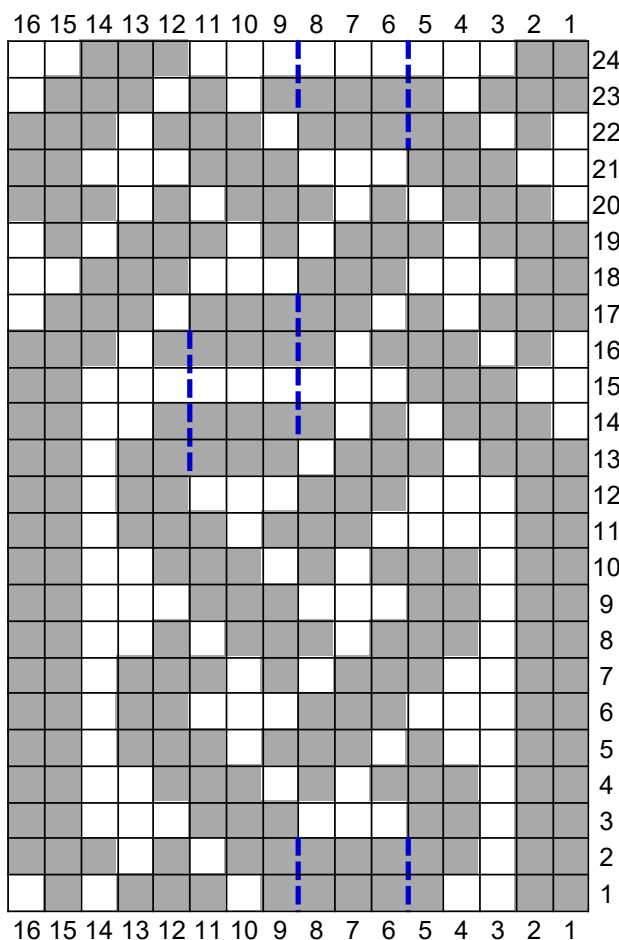
Diamond



Knot panel



Main chart – Knot

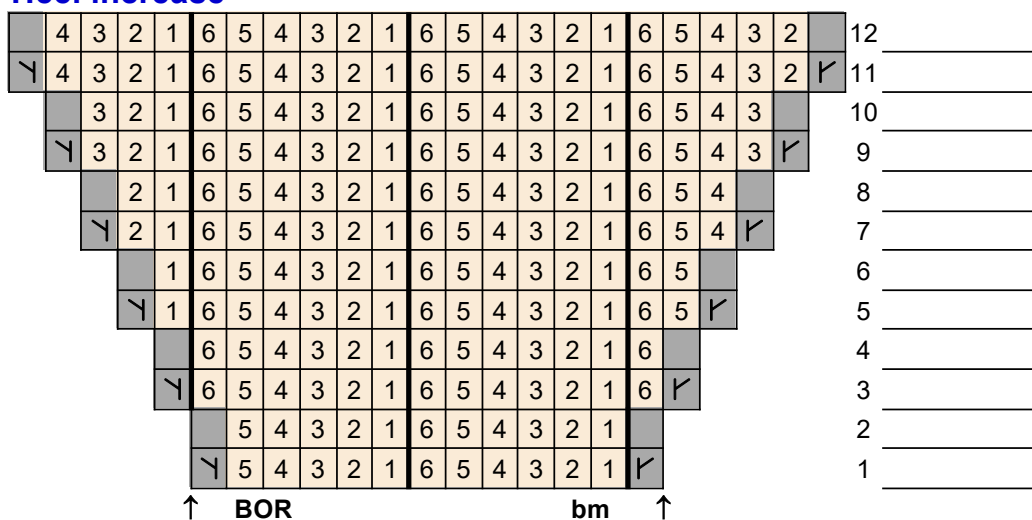


Notes

- heel increases/flap started leg chart row _____
- last leg chart row worked on instep, before starting heel _____

CHARTS – Dark MC – Strong heel charts

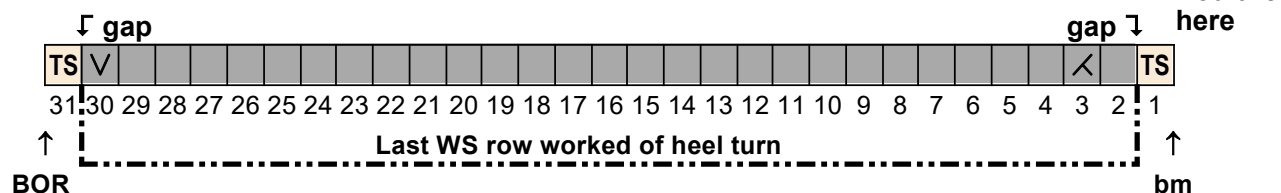
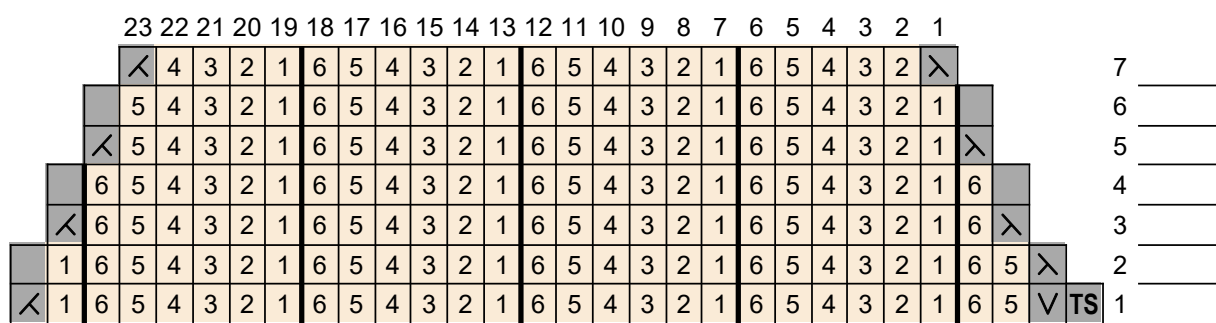
Heel increase



Heel decrease

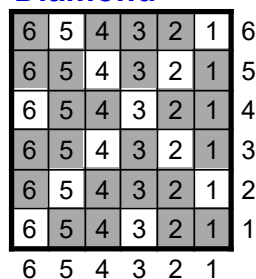
– Small

Centre heel stitch

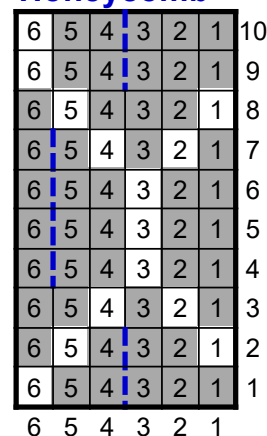


	MC
	CC
	slip wyib (RS); slip wyif (WS)
	repeat
	m1R
	m1L
	k2tog (RS); p2tog (WS)
	ssk
	twin stitch
	unworked twin stitch after working last heel turn row
	work as per honeycomb/diamond chart stitch number

Diamond



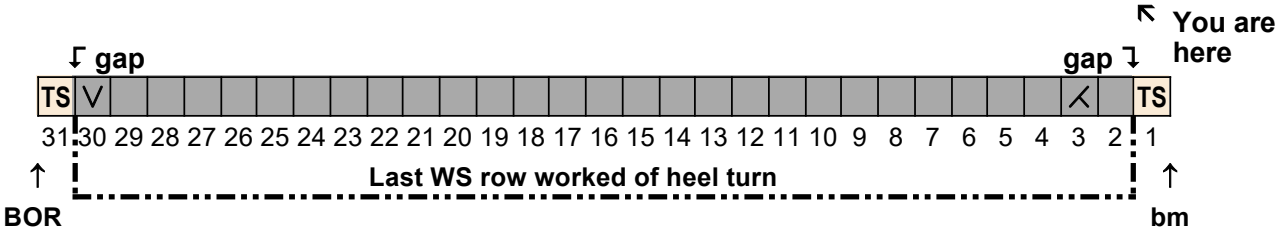
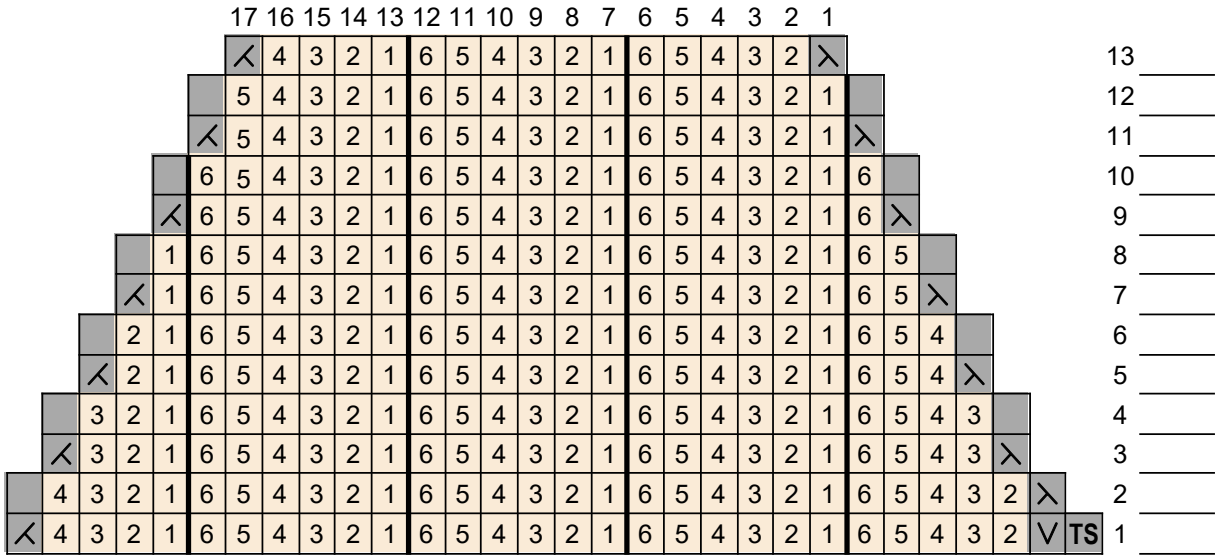
Honeycomb



CHARTS – Dark MC – Strong heel charts

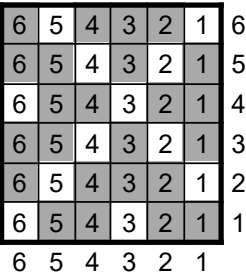
Heel decrease
– Medium

Centre heel stitch
↓

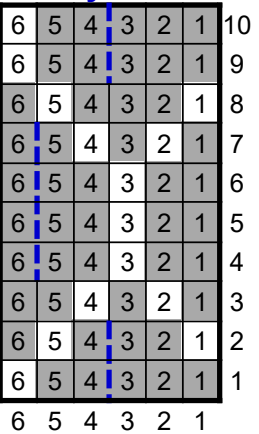


- MC
- CC
- V slip wyib (RS); slip wyif (WS)
- repeat
- m1R
- m1L
- k2tog (RS); p2tog (WS)
- ssk
- TS twin stitch
- TS unworked twin stitch after working last heel turn row
- n work as per honeycomb/diamond chart stitch number

Diamond



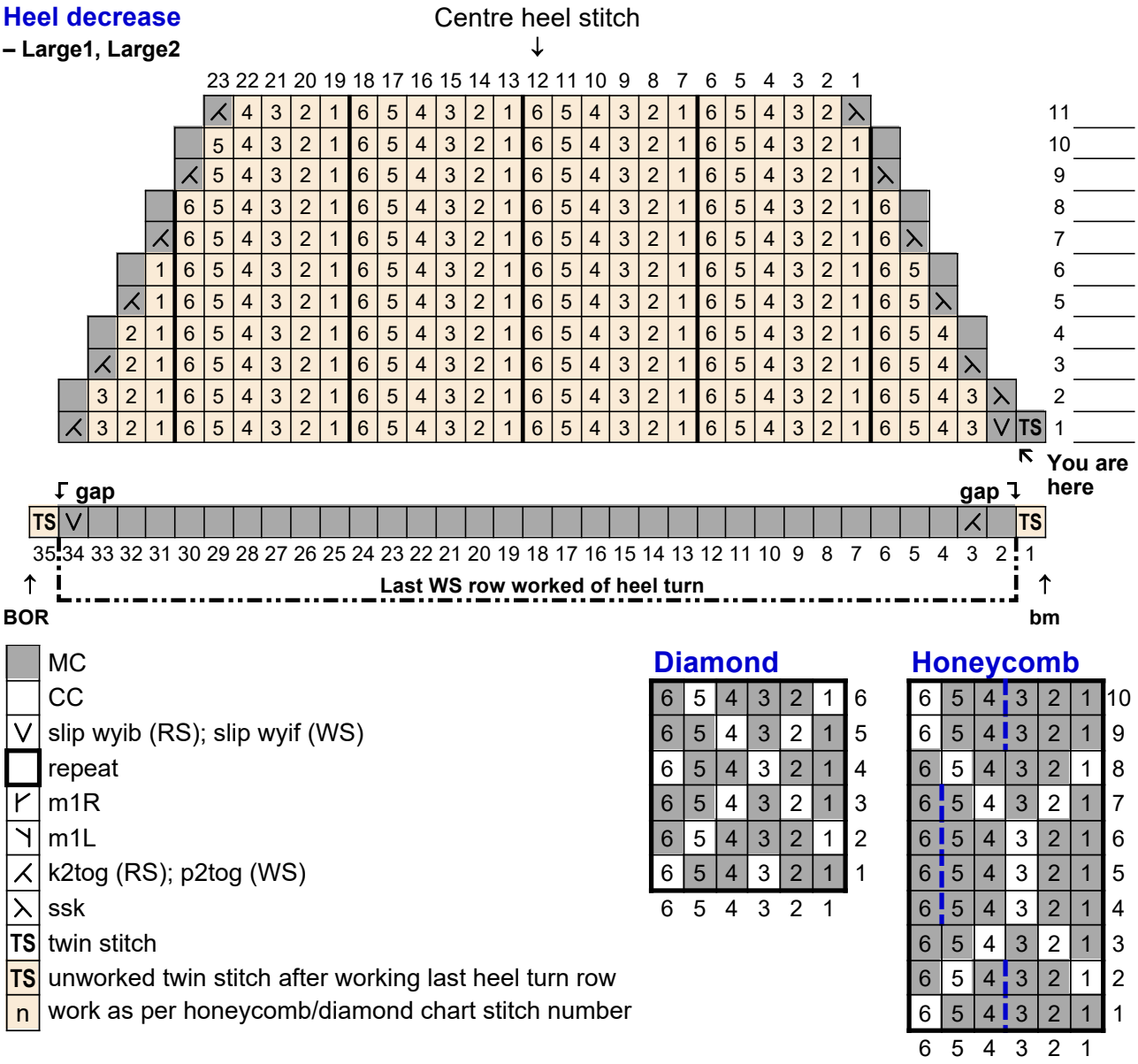
Honeycomb



CHARTS – Dark MC – Strong heel charts

Heel decrease

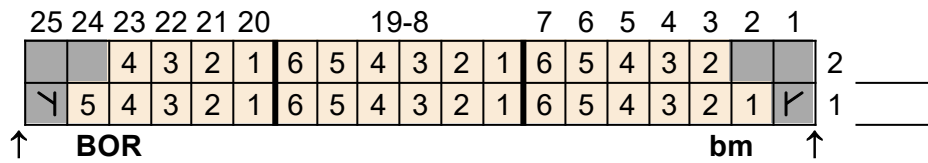
– Large1, Large2



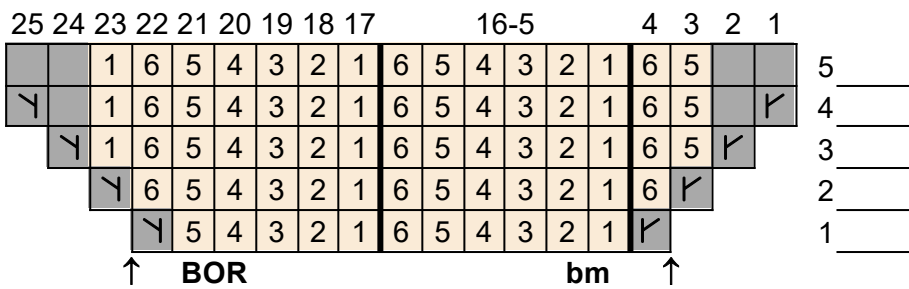
CHARTS – Dark MC – Heel flap and gusset charts

Heel increase

- Small, Large1, Large2



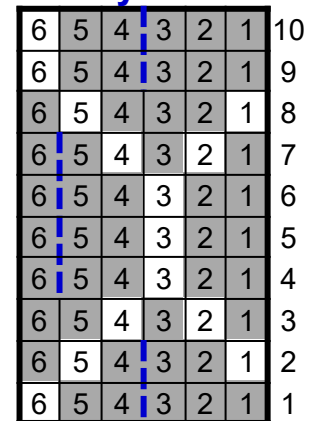
– Medium



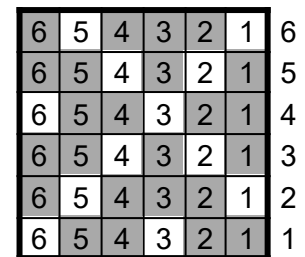
work the following as per honeycomb/diamond chart stitch number



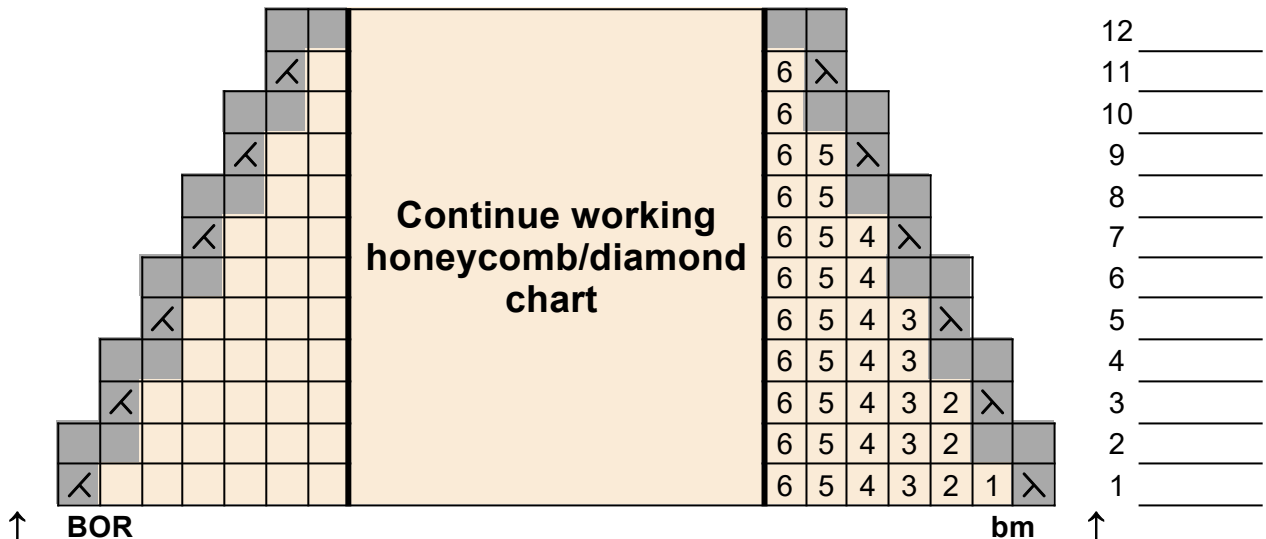
Honeycomb



Diamond

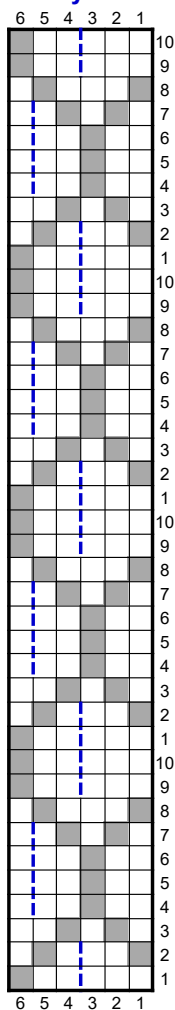


Gusset decrease



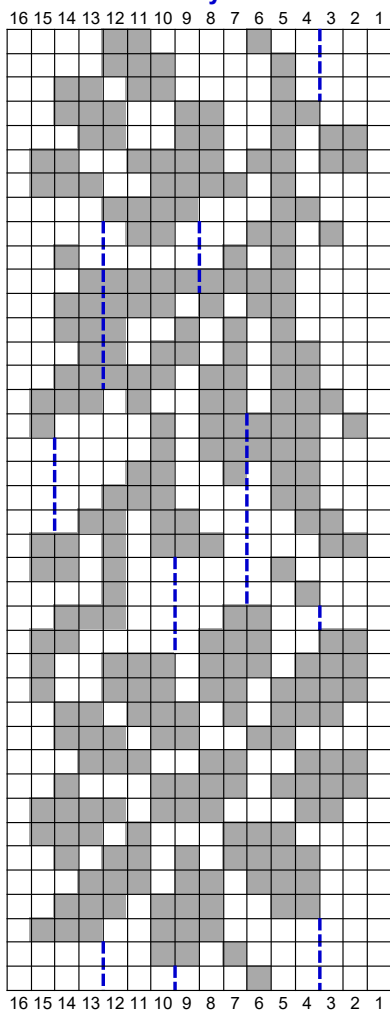
CHARTS – Light MC – Daisy charts

Honeycomb



MC
CC

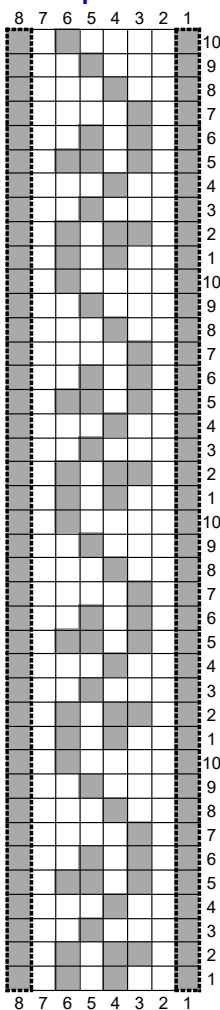
Main chart – Daisy B



m1R
m1L

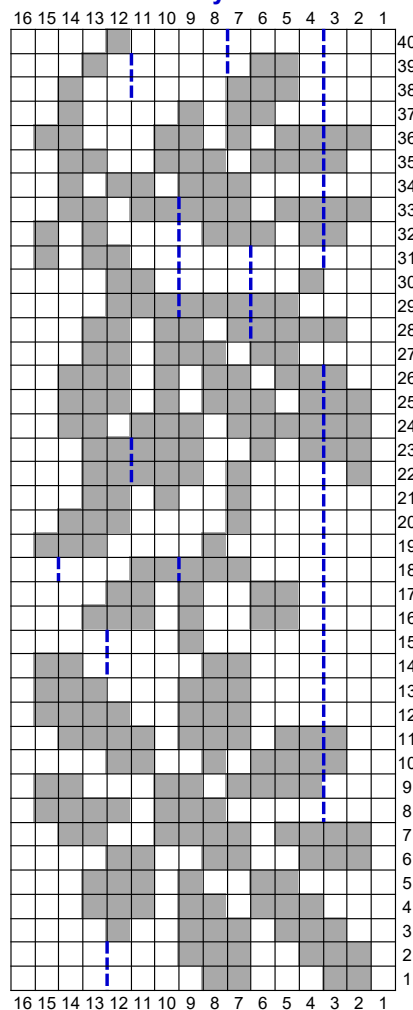
k2tog
ssk

Floral panel



LBJ
repeat

Main chart – Daisy A



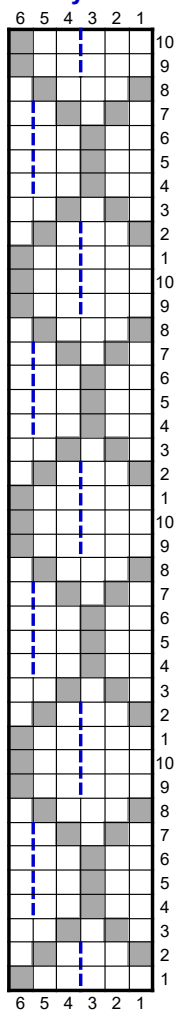
work 1 (1, 1, 2) times
work as per honeycomb chart stitch number

Notes

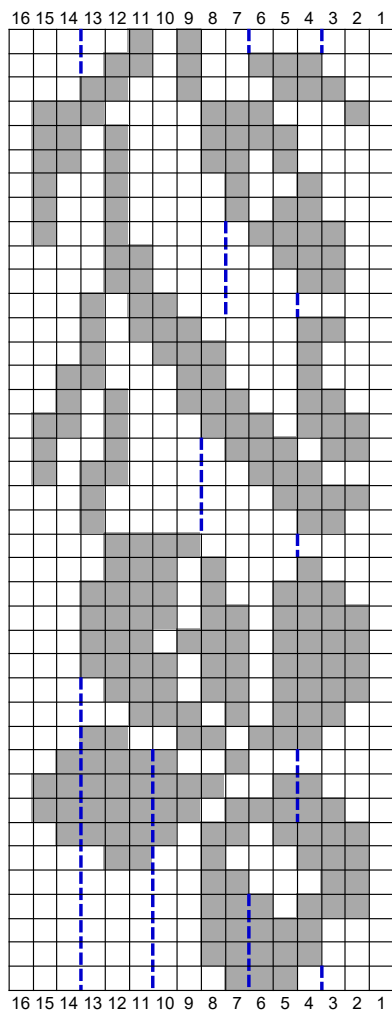
- heel increases/flap started leg chart row _____
- last leg chart row worked on instep, before starting heel _____

CHARTS – Light MC – Iris charts

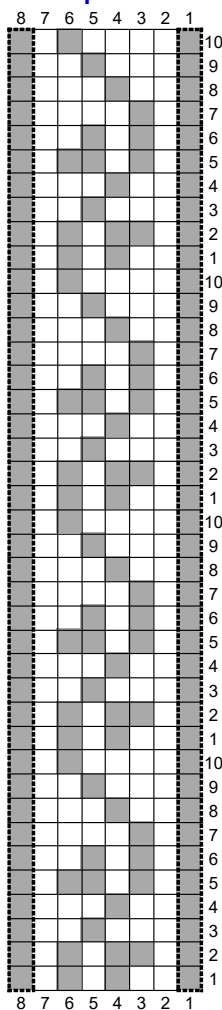
Honeycomb



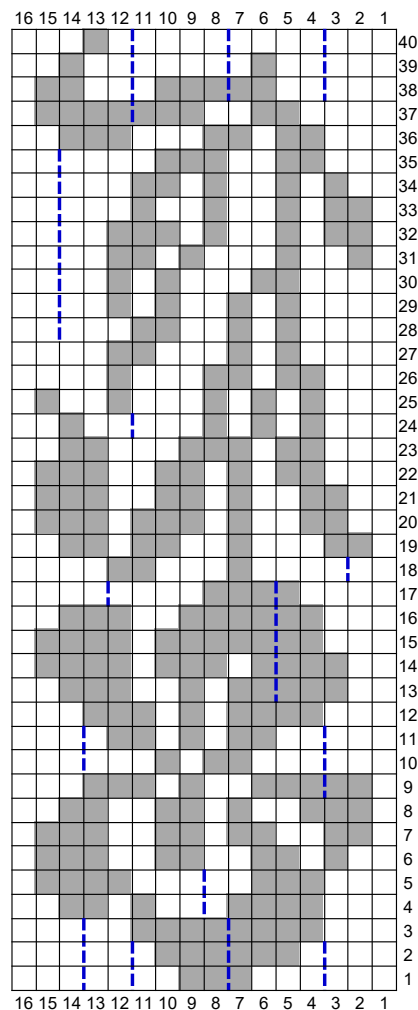
Main chart – Iris B



Floral panel



Main chart – Iris A



MC
CC

m1R
m1L

k2tog
ssk

LBJ
repeat

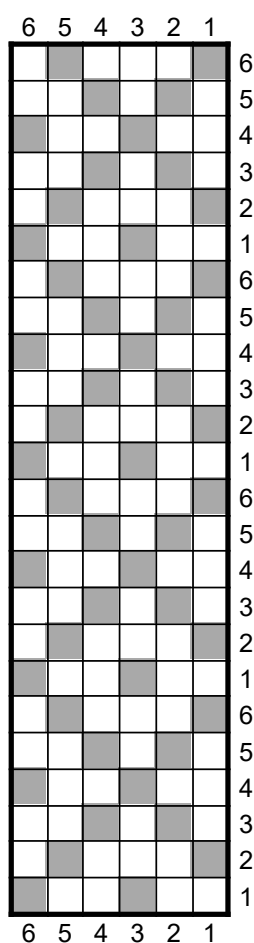
work 1 (1, 1, 2) times
work as per honeycomb chart stitch number

Notes

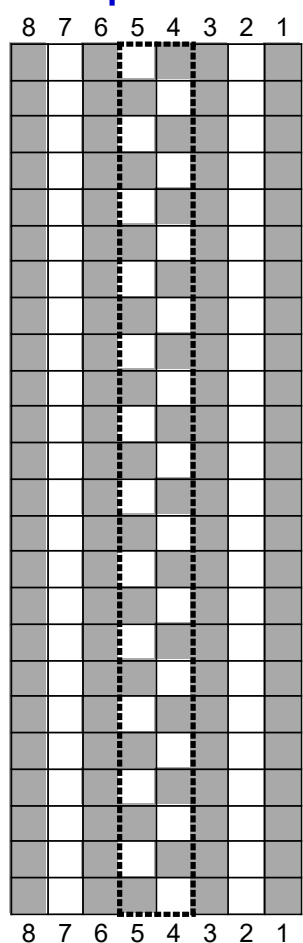
- heel increases/flap started leg chart row _____
- last leg chart row worked on instep, before starting heel _____

CHARTS – Light MC – Knot charts

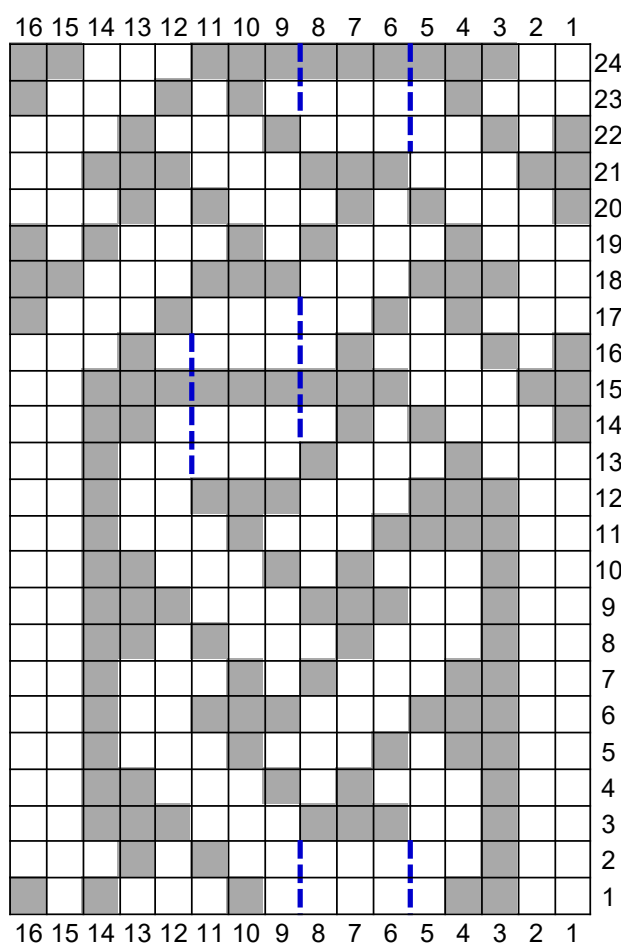
Diamond



Knot panel



Main chart – Knot



MC
CC



m1R
m1L



k2tog
ssk



LBJ
repeat



work 1 (1, 1, 2) times

Notes

- heel increases/flap started leg chart row _____
- last leg chart row worked on instep, before starting heel _____

CHARTS – Light MC – Strong heel charts

Heel increase

	4	3	2	1	6	5	4	3	2	1	6	5	4	3	2	1	6	5	4	3	2		12
Y	4	3	2	1	6	5	4	3	2	1	6	5	4	3	2	1	6	5	4	3	2	Y	11
		3	2	1	6	5	4	3	2	1	6	5	4	3	2	1	6	5	4	3			10
	Y	3	2	1	6	5	4	3	2	1	6	5	4	3	2	1	6	5	4	3	Y		9
			2	1	6	5	4	3	2	1	6	5	4	3	2	1	6	5	4				8
		Y	2	1	6	5	4	3	2	1	6	5	4	3	2	1	6	5	4	Y			7
				1	6	5	4	3	2	1	6	5	4	3	2	1	6	5					6
			Y	1	6	5	4	3	2	1	6	5	4	3	2	1	6	5	Y				5
					6	5	4	3	2	1	6	5	4	3	2	1	6						4
			Y		6	5	4	3	2	1	6	5	4	3	2	1	6	Y					3
						5	4	3	2	1	6	5	4	3	2	1							2
			Y			5	4	3	2	1	6	5	4	3	2	1	Y						1

↑ BOR
bm ↑

Heel decrease

- Small

Centre heel stitch



	23	22	21	20	19	18	17	16	15	14	13	12	11	10	9	8	7	6	5	4	3	2	1							
	↖	4	3	2	1	6	5	4	3	2	1	6	5	4	3	2	1	6	5	4	3	2	↗	7						
		5	4	3	2	1	6	5	4	3	2	1	6	5	4	3	2	1	6	5	4	3	2	1	6					
	↖	5	4	3	2	1	6	5	4	3	2	1	6	5	4	3	2	1	6	5	4	3	2	1	↗	5				
		6	5	4	3	2	1	6	5	4	3	2	1	6	5	4	3	2	1	6	5	4	3	2	1	6		4		
	↖	6	5	4	3	2	1	6	5	4	3	2	1	6	5	4	3	2	1	6	5	4	3	2	1	6	↗	3		
		1	6	5	4	3	2	1	6	5	4	3	2	1	6	5	4	3	2	1	6	5	4	3	2	1	6	5	↗	2
↖	1	6	5	4	3	2	1	6	5	4	3	2	1	6	5	4	3	2	1	6	5	4	3	2	1	6	5	↖	TS	1

↖ You are
here

↓ gap

gap ↓

[illegible]

MC	MC
CC	CC
V	slip wyib (RS); slip wyif (WS)
	repeat
┐	m1R
└	m1L
↘	k2tog (RS); p2tog (WS)
↗	ssk
TS	twin stitch
TS	unworked twin stitch after working last heel turn row
n	work as per honeycomb/diamond chart stitch number

Diamond

6	5	4	3	2	1	6
6	5	4	3	2	1	5
6	5	4	3	2	1	4
6	5	4	3	2	1	3
6	5	4	3	2	1	2
6	5	4	3	2	1	1
6	5	4	3	2	1	

Honeycomb

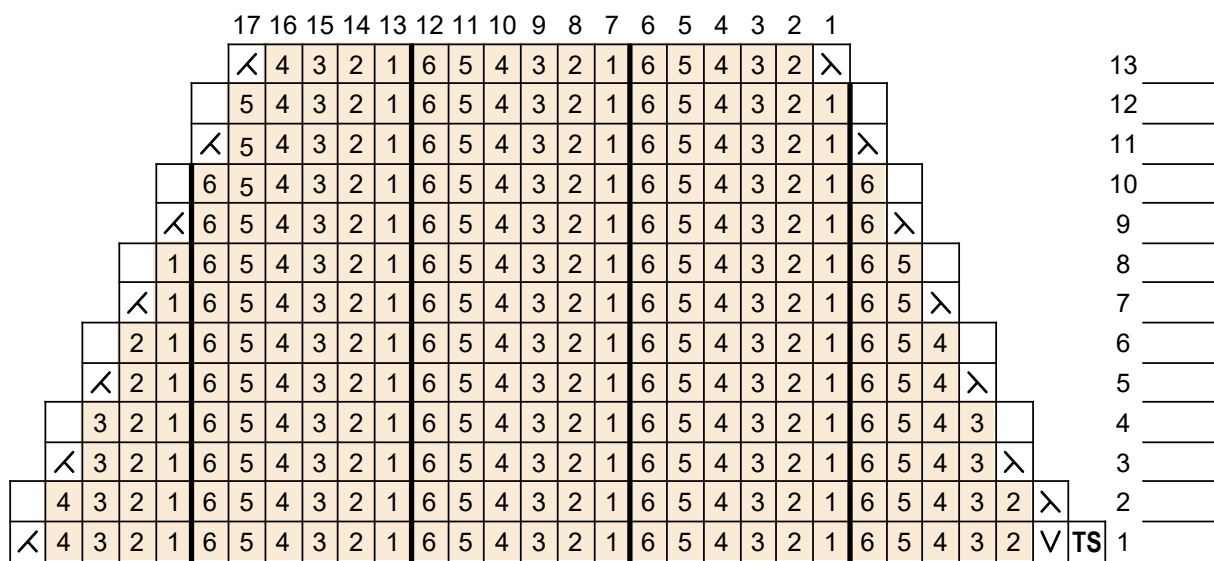
6	5	4	3	2	1	10
6	5	4	3	2	1	9
6	5	4	3	2	1	8
6	5	4	3	2	1	7
6	5	4	3	2	1	6
6	5	4	3	2	1	5
6	5	4	3	2	1	4
6	5	4	3	2	1	3
6	5	4	3	2	1	2
6	5	4	3	2	1	1
6	5	4	3	2	1	

CHARTS – Light MC – Strong heel charts

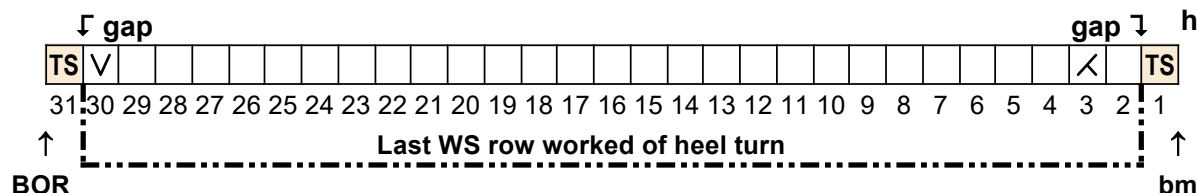
Heel decrease

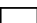








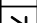

– Medium

Centre heel stitch



↖ You are
here



	MC
	CC
	slip wyib (RS); slip wyif (WS)
	repeat
	m1R
	m1L
	k2tog (RS); p2tog (WS)
	ssk
	twin stitch
	unworked twin stitch after working last heel turn row
	work as per honeycomb/diamond chart stitch number

Diamond

6	5	4	3	2	1	6
6	5	4	3	2	1	5
6	5	4	3	2	1	4
6	5	4	3	2	1	3
6	5	4	3	2	1	2
6	5	4	3	2	1	1
6	5	4	3	2	1	

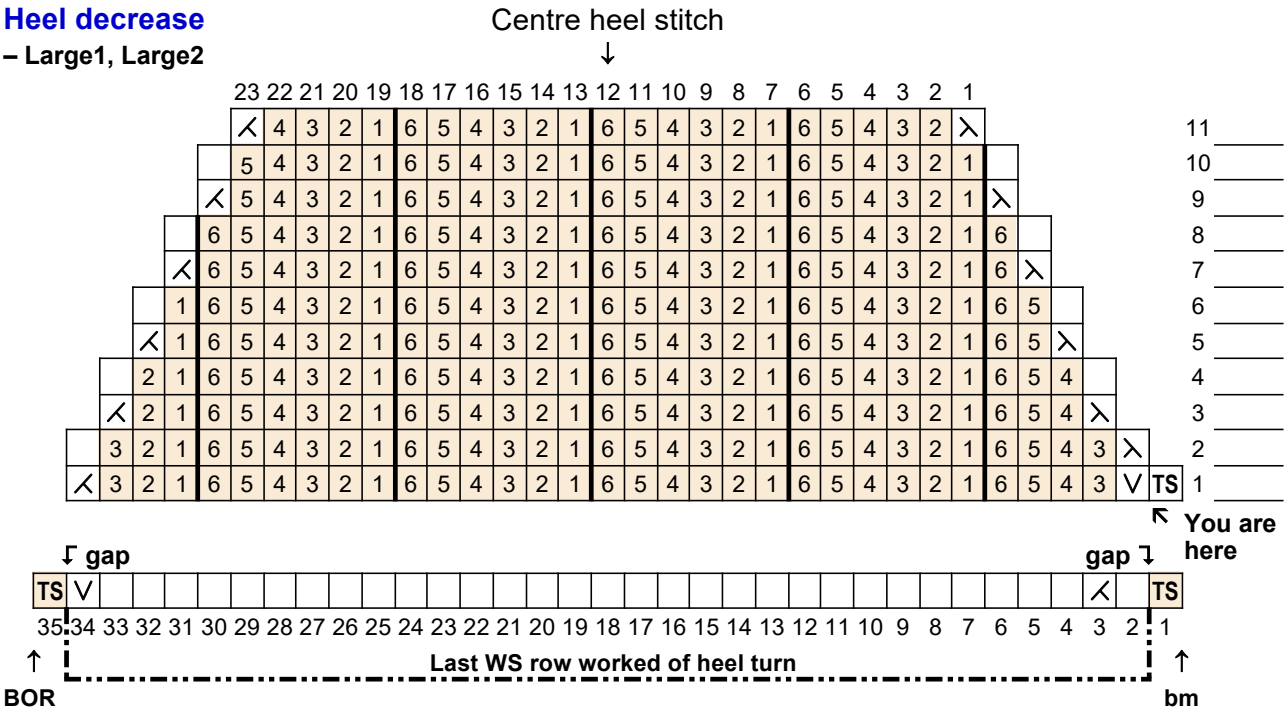
Honeycomb

6	5	4	3	2	1	10
6	5	4	3	2	1	9
6	5	4	3	2	1	8
6	5	4	3	2	1	7
6	5	4	3	2	1	6
6	5	4	3	2	1	5
6	5	4	3	2	1	4
6	5	4	3	2	1	3
6	5	4	3	2	1	2
6	5	4	3	2	1	1
6	5	4	3	2	1	

CHARTS – Light MC – Strong heel charts

Heel decrease

– Large1, Large2



MC
CC
V slip wyib (RS); slip wyif (WS)
repeat
m1R
m1L
k2tog (RS); p2tog (WS)
ssk
TS twin stitch
TS unworked twin stitch after working last heel turn row
n work as per honeycomb/diamond chart stitch number

Diamond

6	5	4	3	2	1	6
6	5	4	3	2	1	5
6	5	4	3	2	1	4
6	5	4	3	2	1	3
6	5	4	3	2	1	2
6	5	4	3	2	1	1
6	5	4	3	2	1	

Honeycomb

6	5	4	3	2	1	10
6	5	4	3	2	1	9
6	5	4	3	2	1	8
6	5	4	3	2	1	7
6	5	4	3	2	1	6
6	5	4	3	2	1	5
6	5	4	3	2	1	4
6	5	4	3	2	1	3
6	5	4	3	2	1	2
6	5	4	3	2	1	1
6	5	4	3	2	1	

CHARTS – Light MC – Heel flap and gusset charts

Heel increase

- Small, Large1, Large2

25	24	23	22	21	20	19-8					7					6	5	4	3	2	1
		4	3	2	1	6	5	4	3	2	1	6	5	4	3	2			2		
↘	5	4	3	2	1	6	5	4	3	2	1	6	5	4	3	2	1	↗	1		
↑	BOR										bm								↑		

– Medium

25	24	23	22	21	20	19	18	17	16-5						4	3	2	1	
		1	6	5	4	3	2	1	6	5	4	3	2	1	6	5			5
Y		1	6	5	4	3	2	1	6	5	4	3	2	1	6	5		Y	4
	Y	1	6	5	4	3	2	1	6	5	4	3	2	1	6	5	Y		3
		Y	6	5	4	3	2	1	6	5	4	3	2	1	6	Y			2
			Y	5	4	3	2	1	6	5	4	3	2	1	Y				1

↑ BOR
↑ bm

 MC
  CC
  k2tog
  ssk
  m1R
  m1L
  repeat

work the following as per honeycomb/diamond chart stitch number

n knit knit

Honeycomb

6	5	4	3	2	1	10
6	5	4	3	2	1	9
6	5	4	3	2	1	8
6	5	4	3	2	1	7
6	5	4	3	2	1	6
6	5	4	3	2	1	5
6	5	4	3	2	1	4
6	5	4	3	2	1	3
6	5	4	3	2	1	2
6	5	4	3	2	1	1

Diamond

6	5	4	3	2	1	6
6	5	4	3	2	1	5
6	5	4	3	2	1	4
6	5	4	3	2	1	3
6	5	4	3	2	1	2
6	5	4	3	2	1	1

Gusset decrease

Continue working honeycomb/diamond chart

The diagram illustrates a honeycomb/diamond chart used for project scheduling. The chart is a grid of squares, some of which are shaded orange. The central text box says "Continue working honeycomb/diamond chart". To the right of the chart is a vertical axis labeled "bm" (beginning month) with values from 1 to 12. To the left of the chart is a vertical axis labeled "BOR" (beginning of resource) with an upward arrow.

WRITTEN CHART INSTRUCTIONS

All stitches are knit unless otherwise stated

Main chart – Daisy A (all stitches are knit unless otherwise stated)

16 sts

- Row 1:** MC 1, CC 2, MC 3, CC 2, MC 8.
Row 2: MC 1, CC 3, MC 2, CC 3, MC 7.
Row 3: MC 2, CC 3, MC 1, CC 3, MC 2, CC 1, MC 4.
Row 4: MC 3, CC 3, MC 1, CC 2, MC 1, CC 3, MC 3.
Row 5: MC 4, CC 2, MC 2, CC 1, MC 1, CC 3, MC 3.
Row 6: MC 1, CC 3, [MC 2, CC 2] x2, MC 4.
Row 7: [MC 1, CC 4] x2, MC 2, CC 2, MC 2.
Row 8: MC 7, CC 3, MC 1, CC 4, MC 1.
Row 9: MC 3, CC 4, MC 1, CC 2, MC 3, CC 2, MC 1.
Row 10: MC 2, CC 4, MC 1, CC 1, MC 2, CC 2, MC 4.
Row 11: MC 2, [CC 3, MC 1] x2, CC 4, MC 2.
Row 12: MC 6, CC 3, MC 2, CC 4, MC 1.
Row 13: MC 6, CC 3, MC 3, CC 3, MC 1.
Row 14: MC 6, CC 2, MC 5, CC 2, MC 1.
Row 15: MC 8, CC 1, MC 7.
Row 16: MC 4, CC 2, MC 2, CC 1, MC 1, CC 3, MC 3.
Row 17: MC 4, CC 2, MC 2, CC 1, MC 1, CC 2, MC 4.
Row 18: MC 6, CC 5, MC 5.
Row 19: MC 7, CC 1, MC 4, CC 3, MC 1.
Row 20: MC 6, CC 1, MC 4, CC 3, MC 2.
Row 21: MC 6, CC 1, MC 2, CC 1, MC 1, CC 2, MC 3.
Row 22: MC 1, CC 1, MC 4, CC 1, MC 1, CC 5, MC 3.
Row 23: MC 1, CC 3, MC 1, CC 1, MC 2, CC 5, MC 3.
Row 24: MC 1, CC 6, MC 1, CC 3, MC 1, CC 2, MC 2.
Row 25: [MC 1, CC 3] x2, MC 1, CC 1, MC 1, CC 3, MC 2.
Row 26: MC 2, CC 3, MC 1, CC 2, MC 1, CC 1, MC 1, CC 3, MC 2.
Row 27: MC 4, CC 2, MC 1, CC 3, MC 1, CC 2, MC 3.
Row 28: MC 2, CC 5, [MC 1, CC 2] x2, MC 3.
Row 29: MC 4, CC 8, MC 4.
Row 30: MC 3, CC 1, MC 6, CC 2, MC 4.
Row 31: MC 11, CC 2, MC 1, CC 1, MC 1.
Row 32: MC 2, CC 2, MC 1, CC 3, MC 4, [CC 1, MC 1] x2.
Row 33: MC 1, CC 4, MC 1, CC 5, MC 1, CC 2, MC 2.
Row 34: MC 6, CC 3, MC 1, CC 2, MC 1, CC 1, MC 2.
Row 35: MC 2, CC 4, MC 1, CC 3, MC 2, CC 2, MC 2.
Row 36: MC 1, CC 4, MC 1, CC 1, MC 1, CC 2, MC 3, CC 2, MC 1.
Row 37: MC 5, CC 2, MC 1, CC 1, MC 4, CC 1, MC 2.
Row 38: MC 4, CC 3, MC 6, CC 1, MC 2.
Row 39: MC 4, CC 2, MC 6, CC 1, MC 3.
Row 40: MC 11, CC 1, MC 4.

Main chart – Daisy B (all stitches are knit unless otherwise stated)

16 sts

- Row 1:** MC 5, CC 1, MC 10.
Row 2: MC 6, CC 1, MC 1, CC 2, MC 6.
Row 3: MC 7, CC 3, MC 2, CC 3, MC 1.
Row 4: MC 3, CC 2, MC 2, CC 3, MC 1, CC 3, MC 2.
Row 5: MC 3, CC 3, MC 1, CC 2, MC 1, CC 3, MC 3.
Row 6: MC 3, CC 4, MC 1, CC 1, MC 1, CC 2, MC 1, CC 1, MC 2.
Row 7: MC 4, CC 3, MC 3, CC 1, MC 1, CC 3, MC 1.
Row 8: MC 2, CC 2, MC 3, CC 3, MC 1, CC 4, MC 1.
Row 9: [MC 1, CC 4] x2, MC 3, CC 1, MC 2.
Row 10: MC 1, CC 3, MC 2, CC 2, MC 2, CC 3, MC 3.
Row 11: MC 4, CC 2, MC 2, CC 2, MC 1, CC 3, MC 2.
Row 12: MC 2, CC 3, MC 1, CC 1, MC 1, CC 3, MC 1, CC 2, MC 2.
Row 13: MC 1, CC 4, MC 1, CC 2, MC 1, CC 3, MC 2, CC 1, MC 1.
Row 14: [MC 1, CC 3] x3, MC 2, CC 1, MC 1.
Row 15: MC 1, CC 2, MC 2, CC 3, MC 5, CC 2, MC 1.
Row 16: MC 5, CC 2, MC 4, CC 3, MC 2.
Row 17: MC 3, CC 1, MC 7, CC 1, MC 4.
Row 18: MC 4, CC 1, MC 6, CC 1, MC 1, CC 2, MC 1.
Row 19: MC 1, CC 2, MC 4, CC 3, MC 1, CC 1, MC 1, CC 2, MC 1.
Row 20: MC 2, CC 2, MC 4, CC 2, MC 1, CC 2, MC 3.
Row 21: MC 3, CC 2, MC 4, CC 3, MC 4.
Row 22: MC 3, CC 2, MC 1, CC 1, MC 2, CC 2, MC 5.
Row 23: MC 3, CC 5, MC 1, CC 1, MC 6.
Row 24: MC 1, CC 1, MC 1, CC 5, MC 1, CC 1, MC 4, CC 1, MC 1.
Row 25: MC 2, CC 3, MC 1, CC 2, MC 2, CC 1, MC 1, CC 3, MC 1.
Row 26: MC 3, [CC 2, MC 1] x2, CC 5, MC 2.
Row 27: MC 3, CC 2, MC 1, CC 1, [MC 1, CC 2] x2, MC 3.
Row 28: MC 4, [CC 1, MC 1] x2, CC 1, MC 2, CC 3, MC 2.
Row 29: MC 4, CC 2, MC 1, CC 1, MC 1, CC 5, MC 2.
Row 30: MC 4, CC 9, MC 3.
Row 31: MC 4, CC 1, MC 1, CC 1, MC 6, CC 1, MC 2.
Row 32: MC 2, CC 1, MC 1, CC 2, MC 3, CC 2, MC 5.
Row 33: MC 3, CC 2, MC 3, CC 4, MC 4.
Row 34: MC 4, CC 1, MC 1, CC 4, MC 2, CC 3, MC 1.
Row 35: [MC 1, CC 2] x2, MC 1, CC 4, MC 2, CC 2, MC 1.
Row 36: MC 1, CC 2, MC 1, CC 1, [MC 2, CC 2] x2, MC 3.
Row 37: MC 3, [CC 2, MC 2] x2, CC 3, MC 2.
Row 38: MC 4, CC 1, MC 4, CC 2, MC 1, CC 2, MC 2.
Row 39: MC 4, CC 1, MC 4, CC 3, MC 4.
Row 40: MC 5, CC 1, MC 4, CC 2, MC 4.

Main chart – Iris A (all stitches are knit unless otherwise stated)

16 sts

- Row 1:** MC 6, CC 3, MC 7.
Row 2: MC 4, CC 6, MC 6.
Row 3: MC 3, CC 8, MC 5.
Row 4: MC 3, CC 4, MC 3, CC 1, MC 1, CC 2, MC 2.
Row 5: MC 3, CC 3, MC 5, CC 4, MC 1.
Row 6: MC 2, CC 1, MC 1, [CC 2, MC 2] x2, CC 3, MC 1.
Row 7: MC 1, CC 2, MC 2, CC 2, MC 1, CC 2, MC 2, CC 3, MC 1.
Row 8: MC 1, CC 3, MC 2, CC 1, MC 1, [CC 2, MC 2] x2.
Row 9: MC 1, CC 5, MC 2, CC 1, MC 1, CC 3, MC 3.
Row 10: MC 6, CC 2, MC 1, CC 1, MC 6.
Row 11: MC 5, CC 2, MC 1, CC 1, MC 1, CC 2, MC 4.
Row 12: MC 3, CC 4, MC 1, CC 1, MC 1, CC 3, MC 3.
Row 13: MC 2, CC 5, MC 1, CC 1, MC 2, CC 3, MC 2.
Row 14: MC 2, CC 4, MC 1, CC 3, MC 1, CC 4, MC 1.
Row 15: MC 3, CC 7, MC 1, CC 4, MC 1.
Row 16: MC 3, CC 6, MC 2, CC 3, MC 2.
Row 17: MC 4, CC 4, MC 8.
Row 18: MC 6, CC 1, MC 3, CC 2, MC 4.
Row 19: MC 1, CC 2, MC 3, CC 1, MC 2, CC 2, MC 1, CC 2, MC 2.
Row 20: MC 2, CC 2, MC 2, CC 1, [MC 1, CC 3] x2, MC 1.
Row 21: MC 2, CC 2, MC 2, CC 1, MC 1, CC 2, MC 2, CC 3, MC 1.
Row 22: MC 3, CC 2, MC 1, CC 1, MC 1, CC 2, MC 2, CC 3, MC 1.
Row 23: MC 3, CC 2, MC 1, CC 3, MC 3, CC 2, MC 2.
Row 24: MC 3, [CC 1, MC 1] x2, CC 1, MC 5, CC 1, MC 2.
Row 25: MC 3, [CC 1, MC 1] x2, CC 1, MC 3, CC 1, MC 2, CC 1, MC 1.
Row 26: MC 3, CC 2, MC 1, CC 2, MC 3, CC 1, MC 4.
Row 27: MC 4, CC 1, MC 1, CC 1, MC 3, CC 2, MC 4.
Row 28: MC 4, CC 1, MC 1, CC 1, MC 2, CC 2, MC 5.
Row 29: MC 4, CC 1, MC 1, CC 1, MC 2, CC 1, MC 1, CC 1, MC 4.
Row 30: MC 4, CC 2, MC 3, CC 1, MC 1, CC 1, MC 4.
Row 31: MC 1, CC 1, MC 2, CC 1, MC 3, CC 1, MC 1, CC 2, MC 4.
Row 32: MC 1, CC 2, MC 1, CC 1, MC 2, CC 1, MC 1, CC 3, MC 4.
Row 33: MC 1, CC 2, MC 1, [CC 1, MC 2] x2, CC 1, MC 5.
Row 34: MC 2, CC 1, MC 1, CC 1, MC 2, CC 1, MC 1, CC 2, MC 5.
Row 35: MC 3, CC 2, MC 2, CC 3, MC 6.
Row 36: MC 3, CC 2, MC 1, CC 2, MC 3, CC 3, MC 2.
Row 37: MC 4, CC 2, MC 2, CC 7, MC 1.
Row 38: MC 5, CC 5, MC 3, CC 2, MC 1.
Row 39: MC 5, CC 1, MC 7, CC 1, MC 2.
Row 40: MC 12, CC 1, MC 3.

Main chart – Iris B (all stitches are knit unless otherwise stated)

16 sts

Row 1: MC 4, CC 3, MC 9.

Rows 2-3: MC 3, CC 5, MC 8.

Row 4: [MC 1, CC 3] x2, MC 8.

Row 5: MC 1, CC 2, MC 3, CC 2, MC 8.

Row 6: MC 1, CC 3, MC 3, CC 1, MC 2, CC 2, MC 4.

Row 7: MC 1, CC 4, MC 1, CC 2, MC 1, CC 5, MC 2.

Row 8: MC 2, CC 5, MC 1, CC 7, MC 1.

Row 9: MC 3, CC 2, MC 2, CC 8, MC 1.

Row 10: MC 6, CC 1, MC 2, CC 5, MC 2.

Row 11: MC 3, CC 3, MC 1, CC 2, MC 2, CC 2, MC 3.

Row 12: MC 2, CC 3, MC 1, CC 1, MC 1, CC 3, MC 5.

Row 13: MC 1, CC 4, MC 1, CC 2, MC 1, CC 3, MC 4.

Row 14: MC 1, CC 4, MC 1, CC 2, MC 1, CC 4, MC 3.

Row 15: MC 1, CC 4, [MC 1, CC 3] x2, MC 3.

Row 16: MC 1, CC 4, MC 1, CC 2, MC 1, CC 4, MC 3.

Row 17: MC 2, CC 3, MC 2, CC 1, MC 1, CC 4, MC 3.

Row 18: [MC 3, CC 1] x2, MC 1, CC 3, MC 4.

Row 19: MC 8, CC 4, MC 4.

Row 20: MC 2, CC 2, MC 8, CC 1, MC 3.

Row 21: MC 1, CC 4, MC 7, CC 1, MC 3.

Row 22: MC 3, CC 3, MC 5, CC 2, MC 1, CC 1, MC 1.

Row 23: MC 1, CC 2, MC 1, CC 3, MC 4, CC 1, MC 2, CC 1, MC 1.

Row 24: [MC 1, CC 3] x2, MC 3, CC 1, MC 1, CC 2, MC 1.

Row 25: MC 2, CC 2, MC 2, CC 3, MC 2, CC 1, MC 1, CC 1, MC 2.

Row 26: MC 3, CC 1, [MC 3, CC 2] x2, MC 2.

Row 27: MC 3, CC 1, MC 3, CC 3, MC 2, CC 1, MC 3.

Row 28: MC 2, CC 2, MC 4, CC 3, MC 1, CC 1, MC 3.

Row 29: MC 9, CC 2, MC 1, CC 1, MC 3.

Row 30: MC 2, CC 2, MC 6, CC 2, MC 4.

Row 31: MC 2, CC 3, MC 5, CC 2, MC 4.

Row 32: MC 2, CC 4, MC 5, CC 1, MC 2, CC 1, MC 1.

Row 33: MC 3, CC 2, MC 1, CC 1, MC 4, CC 1, MC 2, CC 1, MC 1.

Row 34: MC 3, CC 1, MC 2, CC 1, MC 4, CC 1, MC 2, CC 1, MC 1.

Row 35: MC 4, CC 1, MC 1, CC 2, MC 3, CC 1, MC 1, CC 2, MC 1.

Row 36: MC 4, CC 4, MC 3, CC 1, MC 1, CC 2, MC 1.

Row 37: MC 1, CC 1, MC 3, CC 3, MC 4, CC 3, MC 1.

Row 38: MC 2, CC 3, MC 3, CC 1, MC 2, CC 2, MC 3.

Row 39: MC 3, CC 3, MC 2, CC 1, MC 1, CC 2, MC 4.

Row 40: MC 8, CC 1, MC 1, CC 1, MC 5.

Floral panel chart (all stitches are knit unless otherwise stated)

Small, Medium, Large1 (Large 2)

8 (10) sts

Row 1: CC 1 (2), MC 2, [CC 1, MC 1] x2, CC 1 (2).

Row 2: CC 1 (2), MC 1, CC 2, MC 1, CC 1, MC 1, CC 1 (2).

Row 3: CC 1 (2), MC 3, CC 1, MC 2, CC 1 (2).

Row 4: CC 1 (2), MC 2, CC 1, MC 3, CC 1 (2).

Row 5: CC 1 (2), MC 1, CC 1, MC 1, CC 2, MC 1, CC 1 (2).

Row 6: CC 1 (2), [MC 1, CC 1] x2, MC 2, CC 1 (2).

Row 7: CC 1 (2), MC 1, CC 1, MC 4, CC 1 (2).

Row 8: CC 1 (2), MC 2, CC 1, MC 3, CC 1 (2).

Row 9: CC 1 (2), MC 3, CC 1, MC 2, CC 1 (2).

Row 10: CC 1 (2), MC 4, CC 1, MC 1, CC 1 (2).

Honeycomb chart (all stitches are knit unless otherwise stated)

6 sts

Row 1: MC 5, CC 1.

Row 2: CC 1, MC 3, CC 1, MC 1.

Row 3: [MC 1, CC 1] x2, MC 2.

Rows 4-6: MC 2, CC 1, MC 3.

Row 7: [MC 1, CC 1] x2, MC 2.

Row 8: CC 1, MC 3, CC 1, MC 1.

Rows 9-10: MC 5, CC 1.

Main chart – Knot (all stitches are knit unless otherwise stated)

16 sts

Row 1: MC 2, CC 2, MC 5, CC 1, MC 3, CC 1, MC 1, CC 1.
Row 2: MC 2, CC 1, MC 7, CC 1, MC 1, CC 1, MC 3.
Row 3: MC 2, CC 1, MC 2, CC 3, MC 3, CC 3, MC 2.
Row 4: MC 2, CC 1, MC 3, CC 1, MC 1, CC 1, MC 3, CC 2, MC 2.
Row 5: MC 2, CC 2, MC 1, [CC 1, MC 3] x2, CC 1, MC 2.
Row 6: MC 2, CC 3, MC 3, CC 3, MC 2, CC 1, MC 2.
Row 7: MC 2, CC 2, MC 3, CC 1, MC 1, CC 1, MC 3, CC 1, MC 2.
Row 8: MC 2, [CC 1, MC 3] x2, CC 1, MC 1, CC 2, MC 2.
Row 9: MC 2, CC 1, MC 2, CC 3, MC 3, CC 3, MC 2.
Row 10: MC 2, CC 1, MC 3, CC 1, MC 1, CC 1, MC 3, CC 2, MC 2.
Row 11: MC 2, CC 4, [MC 3, CC 1] x2, MC 2.
Row 12: MC 2, CC 3, MC 3, CC 3, MC 2, CC 1, MC 2.
Row 13: [MC 3, CC 1] x2, MC 5, CC 1, MC 2.
Row 14: CC 1, MC 3, CC 1, MC 1, CC 1, MC 5, CC 2, MC 2.
Row 15: CC 2, MC 3, CC 9, MC 2.
Row 16: CC 1, MC 1, CC 1, MC 3, CC 1, MC 5, CC 1, MC 3.
Row 17: MC 3, CC 1, MC 1, CC 1, MC 5, CC 1, MC 3, CC 1.
Row 18: MC 2, [CC 3, MC 3] x2, CC 2.
Row 19: MC 3, [CC 1, MC 3, CC 1, MC 1] x2, CC 1.
Row 20: [CC 1, MC 3, CC 1, MC 1] x2, CC 1, MC 3.
Row 21: CC 2, [MC 3, CC 3] x2, MC 2.
Row 22: CC 1, MC 1, CC 1, MC 5, [CC 1, MC 3] x2.
Row 23: MC 3, CC 1, MC 5, CC 1, MC 1, CC 1, MC 3, CC 1.
Row 24: MC 2, CC 9, MC 3, CC 2.

Knot panel chart (all stitches are knit unless otherwise stated)

Small, Medium, Large1 (Large2)

8 (10) sts

Row 1: CC 1, MC 1, CC 1, [MC 1, CC 1] x1 (1, 1, 2), CC1, MC 1, CC 1.
Row 2: CC 1, MC 1, CC 1, [CC 1, MC 1] x1 (1, 1, 2), CC1, MC 1, CC 1.

Diamond chart (all stitches are knit unless otherwise stated)

6 sts

Row 1: [MC 2, CC 1] x2.
Row 2: CC 1, MC 3, CC 1, MC 1.
Row 3: [MC 1, CC 1] x2, MC 2.
Row 4: [MC 2, CC 1] x2.
Row 5: [MC 1, CC 1] x2, MC 2.
Row 6: CC 1, MC 3, CC 1, MC 1.

Strong Heel

Heel increase chart

(all stitches are knit unless otherwise stated) (2 sts increased every odd row)

Row 1: MC m1R, starting with stitch 1 work honeycomb/diamond chart to end of round, MC m1L.

Row 2: MC 1, starting with stitch 1 work honeycomb/diamond chart to 1 stitch before end of round, MC 1.

Row 3: MC m1R, starting with stitch 6 work honeycomb/diamond chart to end of round, MC m1L.

Row 4: MC 1, starting with stitch 6 work honeycomb/diamond chart to 1 stitch before end of round, MC 1.

Row 5: MC m1R, starting with stitch 5 work honeycomb/diamond chart to end of round, MC m1L.

Row 6: MC 1, starting with stitch 5 work honeycomb/diamond chart to 1 stitch before end of round, MC 1.

Row 7: MC m1R, starting with stitch 4 work honeycomb/diamond chart to end of round, MC m1L.

Row 8: MC 1, starting with stitch 4 work honeycomb/diamond chart to 1 stitch before end of round, MC 1.

Row 9: MC m1R, starting with stitch 3 work honeycomb/diamond chart to end of round, MC m1L.

Row 10: MC 1, starting with stitch 3 work honeycomb/diamond chart to 1 stitch before end of round, MC 1.

Row 11: MC m1R, starting with stitch 2 work honeycomb/diamond chart to end of round, MC m1L.

Row 12: MC 1, starting with stitch 2 work honeycomb/diamond chart to 1 stitch before end of round, MC 1.

Strong Heel

Heel decrease chart (all stitches are knit unless otherwise stated)

Small

Row 1: Slip 1, starting with stitch 5 work honeycomb/diamond chart to 1 stitch before gap, MC k2tog. (1 st dec)

Row 2: MC ssk, starting with stitch 5 work honeycomb/diamond chart to 1 stitch before end of round, MC 1.

Row 3: MC ssk, starting with stitch 6 work honeycomb/diamond chart to 2 stitches before end of round, MC k2tog. (2 sts dec)

Row 4: MC 1, starting with stitch 6 work honeycomb/diamond chart to 1 stitch before end of round, MC 1.

Row 5: MC ssk, starting with stitch 1 work honeycomb/diamond chart to 2 stitches before end of round, MC k2tog. (2 sts dec)

Row 6: MC 1, starting with stitch 1 work honeycomb/diamond chart to 1 stitch before end of round, MC 1.

Row 7: MC ssk, starting with stitch 2 work honeycomb/diamond chart to 2 stitches before end of round, MC k2tog. (2 sts dec) **23 sts**

Medium

Row 1: Slip 1, starting with stitch 2 work honeycomb/diamond chart to 1 stitch before gap, MC k2tog. (1 st dec)

Row 2: MC ssk, starting with stitch 2 work honeycomb/diamond chart to 1 stitch before end of round, MC 1.

Row 3: MC ssk, starting with stitch 3 work honeycomb/diamond chart to 2 stitches before end of round, MC k2tog. (2 sts dec)

Row 4: MC 1, starting with stitch 3 work honeycomb/diamond chart to 1 stitch before end of round, MC 1.

Row 5: MC ssk, starting with stitch 4 work honeycomb/diamond chart to 2 stitches before end of round, MC k2tog. (2 sts dec)

Row 6: MC 1, starting with stitch 4 work honeycomb/diamond chart to 1 stitch before end of round, MC 1.

Row 7: MC ssk, starting with stitch 5 work honeycomb/diamond chart to 2 stitches before end of round, MC k2tog. (2 sts dec)

Row 8: MC 1, starting with stitch 5 work honeycomb/diamond chart to 1 stitch before end of round, MC 1.

Row 9: MC ssk, starting with stitch 6 work honeycomb/diamond chart to 2 stitches before end of round, MC k2tog. (2 sts dec)

Row 10: MC 1, starting with stitch 6 work honeycomb/diamond chart to 1 stitch before end of round, MC 1.

Row 11: MC ssk, starting with stitch 1 work honeycomb/diamond chart to 2 stitches before end of round, MC k2tog. (2 sts dec)

Row 12: MC 1, starting with stitch 1 work honeycomb/diamond chart to 1 stitch before end of round, MC 1.

Row 13: MC ssk, starting with stitch 2 work honeycomb/diamond chart to 2 stitches before end of round, MC k2tog. (2 sts dec) **17 sts**

Strong Heel

Heel decrease chart (all stitches are knit unless otherwise stated)

Large1, Large 2

Row 1: Slip 1, starting with stitch 3 work honeycomb/diamond chart to 1 stitch before gap, MC k2tog. (1 st dec)

Row 2: MC ssk, starting with stitch 3 work honeycomb/diamond chart to 1 stitch before end of round, MC 1.

Row 3: MC ssk, starting with stitch 4 work honeycomb/diamond chart to 2 stitches before end of round, MC k2tog. (2 sts dec)

Row 4: MC 1, starting with stitch 4 work honeycomb/diamond chart to 1 stitch before end of round, MC 1.

Row 5: MC ssk, starting with stitch 5 work honeycomb/diamond chart to 2 stitches before end of round, MC k2tog. (2 sts dec)

Row 6: MC 1, starting with stitch 5 work honeycomb/diamond chart to 1 stitch before end of round, MC 1.

Row 7: MC ssk, starting with stitch 6 work honeycomb/diamond chart to 2 stitches before end of round, MC k2tog. (2 sts dec)

Row 8: MC 1, starting with stitch 6 work honeycomb/diamond chart to 1 stitch before end of round, MC 1.

Row 9: MC ssk, starting with stitch 1 work honeycomb/diamond chart to 2 stitches before end of round, MC k2tog. (2 sts dec)

Row 10: MC 1, starting with stitch 1 work honeycomb/diamond chart to 1 stitch before end of round, MC 1.

Row 11: MC ssk, starting with stitch 2 work honeycomb/diamond chart to 2 stitches before end of round, MC k2tog. (2 sts dec) **23 sts**

Heel flap and gusset

Heel increase chart (all stitches are knit unless otherwise stated)

Small, Large1, Large 2

Row 1: MC m1R, starting with stitch 1 work honeycomb/diamond chart to 1 stitch before end of round, MC m1L. (2 sts inc)

Row 2: MC 2, starting with stitch 2 work honeycomb/diamond chart to 2 stitches before end of round, MC 2. **25 sts**

Medium

Row 1: MC m1R, starting with stitch 1 work honeycomb/diamond chart to 1 stitch before end of round, MC m1L. (2 sts inc)

Row 2: MC m1R, starting with stitch 6 work honeycomb/diamond chart to 1 stitch before end of round, MC m1L. (2 sts inc)

Row 3: MC m1R, starting with stitch 5 work honeycomb/diamond chart to 1 stitch before end of round, MC m1L. (2 sts inc)

Row 4: MC m1R, MC 1, starting with stitch 5 work honeycomb/diamond chart to 2 stitches before end of round, MC 1, MC m1L. (2 sts inc)

Row 5: MC 2, starting with stitch 5 work honeycomb/diamond chart to 2 stitches before end of round, MC 2. **25 sts**

Gusset decrease chart

(all stitches are knit unless otherwise stated) (2 sts decreased every odd row)

Row 1: MC ssk, starting with stitch 1 work honeycomb/diamond chart to 1 stitch before gap, MC k2tog.

Row 2: MC 2, starting with stitch 2 work honeycomb/diamond chart to 2 stitches before end of round, MC 2.

Row 3: MC ssk, starting with stitch 2 work honeycomb/diamond chart to 1 stitch before gap, MC k2tog.

Row 4: MC 2, starting with stitch 3 work honeycomb/diamond chart to 2 stitches before end of round, MC 2.

Row 5: MC ssk, starting with stitch 3 work honeycomb/diamond chart to 1 stitch before gap, MC k2tog.

Row 6: MC 2, starting with stitch 4 work honeycomb/diamond chart to 2 stitches before end of round, MC 2.

Row 7: MC ssk, starting with stitch 4 work honeycomb/diamond chart to 1 stitch before gap, MC k2tog.

Row 8: MC 2, starting with stitch 5 work honeycomb/diamond chart to 2 stitches before end of round, MC 2.

Row 9: MC ssk, starting with stitch 5 work honeycomb/diamond chart to 1 stitch before gap, MC k2tog.

Row 10: MC 2, starting with stitch 6 work honeycomb/diamond chart to 2 stitches before end of round, MC 2.

Row 11: MC ssk, starting with stitch 6 work honeycomb/diamond chart to 1 stitch before gap, MC k2tog.

Row 12: MC 2, starting with stitch 1 work honeycomb/diamond chart to 2 stitches before end of round, MC 2.