

Cute Anime Mascot Scarf



BY KATHARINA KUNTZ ♥

Hello fellow Sanrio lover, we have gathered here together to sacrifice our time and sanity to knit this cute scarf. May all the brave knitters survive. But for what purpose? Of course, to feel very demure and very mindful wearing this cutesy scarf. I believe in you, and this cute Pompompurin on the first page believes in you. This ends the cult meeting, see you on the other side.... of the scarf. NOW START KNITTING!!!!

You will need:

Fingering weight Yarn (2,5 – 3,5mm/ US 1 ½ - 4 Needle) around 650m/710yards per color.

I used:

4 skein NICE YARNS Fine (<https://punkrockunicorn.de/>) in DIRTY DISTRICT, 200m/50g (219 yards/ 1,8 oz), (85% Merino Wool 15% Nylon), or a similar weight and yardage in the fiber and color of your choice

4 skein NICE YARNS Fine (<https://punkrockunicorn.de/>) in VERY VANILLA, 200m/50g (219 yards/ 1,8 oz), (85% Merino Wool 15% Nylon), or a similar weight and yardage in the fiber and color of your choice

Knitting needles: size 0 (2mm)

Gauge: 32 stitches and 44 rows per 4 inches

Finished dimensions: 80 inches (203 cm) long, 6,1 inches (15,5 centimeters) wide

Additional materials: 4 Stitch markers, tapestry needle, yarn tension ring. Extra +2 spare 2mm needles (for binding of).

Skill level: Intermediate level

General Notes:

As with most double-knit projects, the two sides mirror each other, with colors opposite. If you never knitted a double-knit this video could help you understand the technique more. I would start watching at 2:44 because we are going to use a different cast on method than in this video.

<https://www.youtube.com/watch?v=uQKZR-2TwCA&t=626s>

You can also see how the color change works and how to use the tension ring. Don't worry if you have never worked with one you are going to get a hang of it pretty fast. A Tipp from me, I wrapped the yarn twice around my pinky to keep the tension.

The Side with the light background is the Main side but you can do the opposite if you like it more. Side two is the back of the scarf, with a dark background. Whichever side is facing you on a particular row is the knit side, and each alternating back side stitch will be a purl. Stop knitting and check your work frequently – a wrong color stitch, a purl where a knit stitch should be, or the unused color laying across the wrong side of a stitch will stand out on the finished scarf. You can use duplicate stitch to cover an error that is many rows back or re knit new. But I recommend to duplicate stitch over the error if there are not too many mistakes. It's soooo difficult to get the loops on the needle again after unraveling it. I put a stitch marker every 10 stitches it helps a lot. Be sure to twist the yarn at the end/beginning a row – if you do not, the front and back of the scarf will separate. In the first Video I linked this is explained as well.

Instructions:

Cast on 98 stitches with the invisible cast on method for double knitting. This Video explains is really well. It's the first Method of the four. <https://www.youtube.com/watch?v=2lWI2jlpMBM&t=200s>

After the cast on turn your piece and knit every odd stitch in DIRTY DISTRICT (Red, or your color of choice), purl every even numbered stitch in VERY VANILLA (Cream, or your color of choice). The charts show only one side of the two-sided project. Starting with Chart 1, follow the charts row by row (below). The two strands of yarn need to move back and forth together so that they stay sandwiched between the two layers of knitting when not being used to make stitches. If you don't keep them moving together you will end up with the 'wrong' color wrapped around the stitches, you have knitted – you will notice pretty quickly! Remember that when you have turned the work and are coming back along the row from left to right, what is shown on the chart for that row is the purl stitch. Knit the even numbered stitches, from 50 down to 2, in the opposite color, and purl the even numbered stitches, from 49 down to 1, in the chart color. When you turn back to the original side, knit in the chart color and purl with the second color.

If you are new to double-knitting this pattern should be a good place to start - the first few rows have no patterning, so your skills can develop as the scarf progresses.

Always start from the bottom of the charts and work up.

Bind Off:

Put the knit and purl stitches respectively on your separate needles. Now purl all the purl stitches on the back needle, one row. After cutting the main yarn, 4 times the lengths of the width of the scarf, take your tapestry needle and make an invisible bind off for double knitting. It is like the Kitchener stitch.

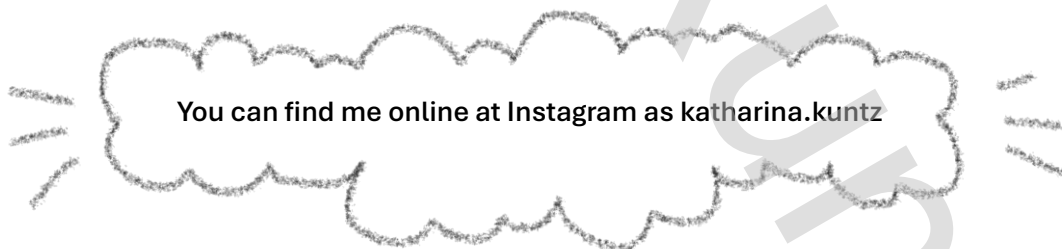
Video for the Bind of: <https://www.youtube.com/watch?v=8hAHV1O1aj0>


Last but not least:

Weave in the ends and block your scarf.

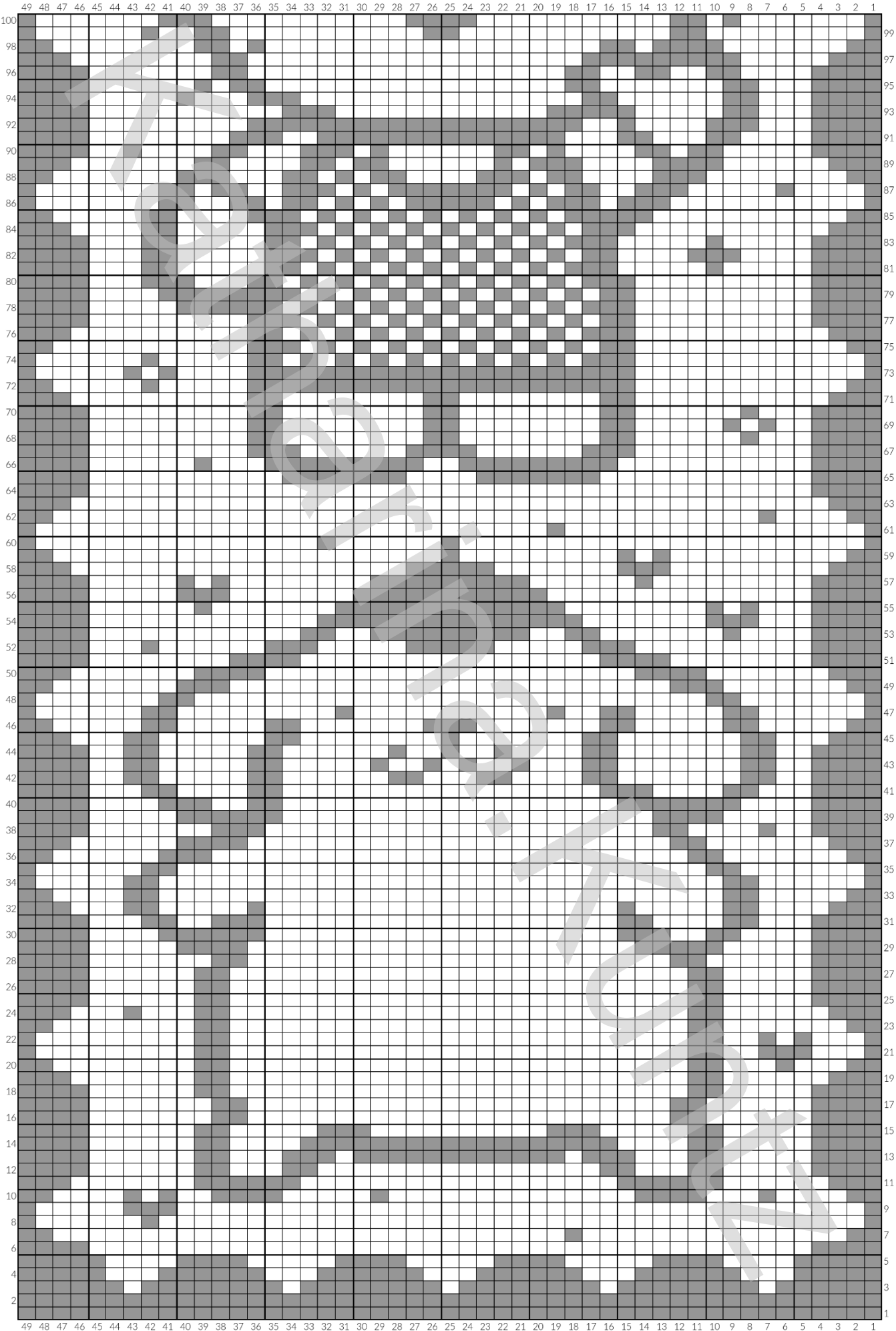


I hope you had a great time knitting this fun scarf. Send me a picture of it, please. I'd love to see it. I can't wait to see which colors you choose.

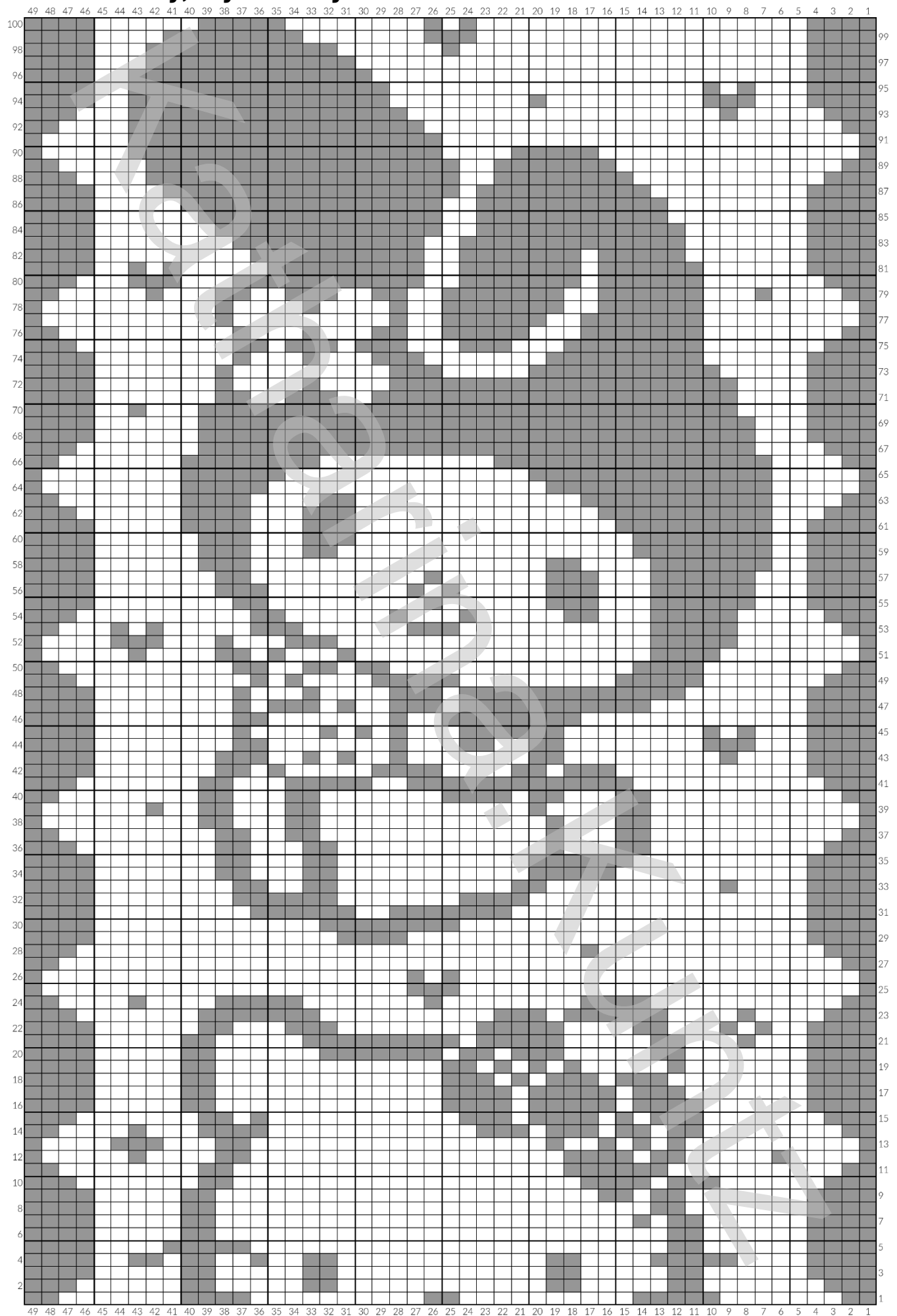


This pattern was designed by Katharina Kuntz / October 2024. This pattern is for private use only. It is not allowed to copy, share, sell or redistribute this pattern. Neither is it allowed to sell products made with the help of this pattern. 

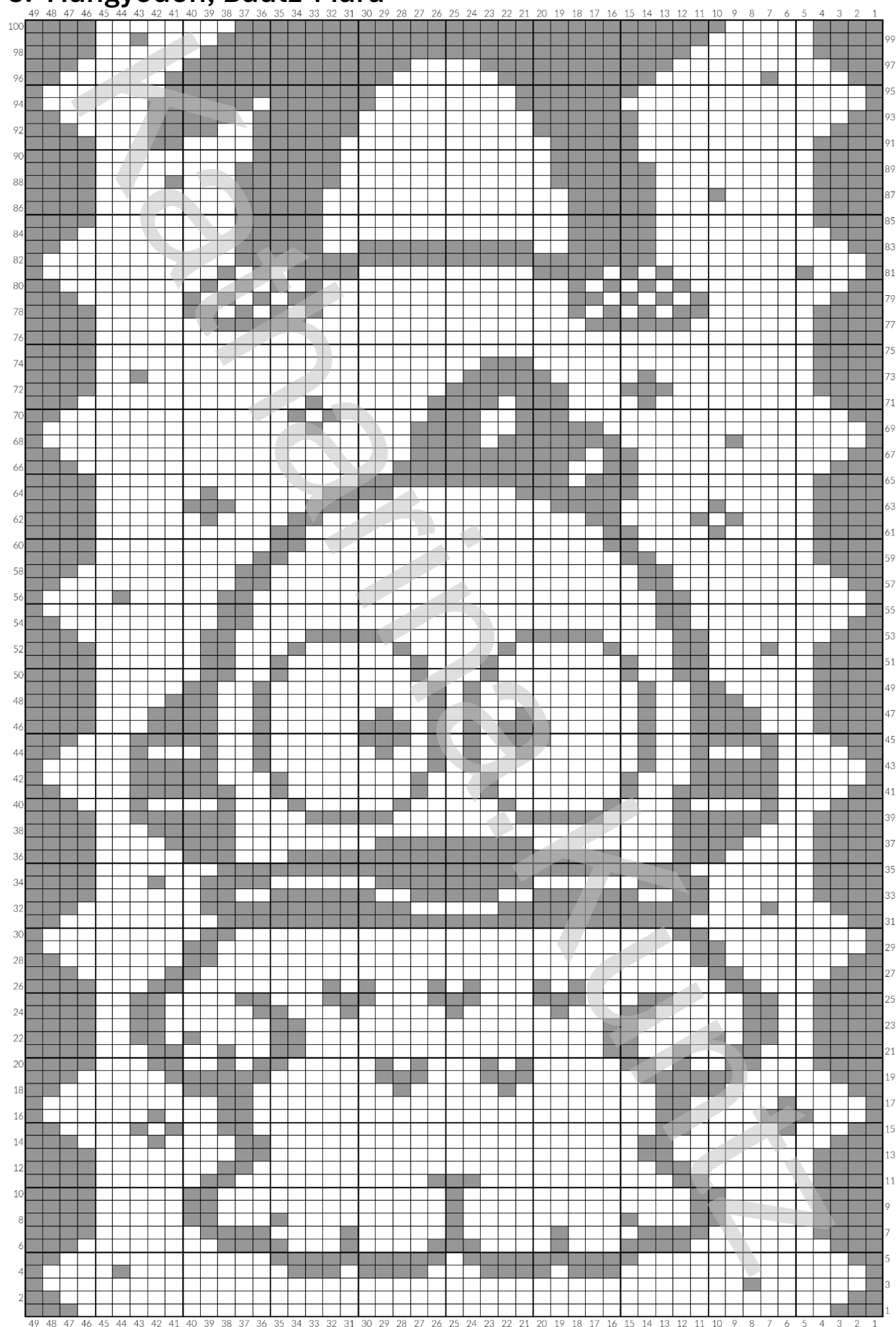
1. Pompompurin, Hello Kitty



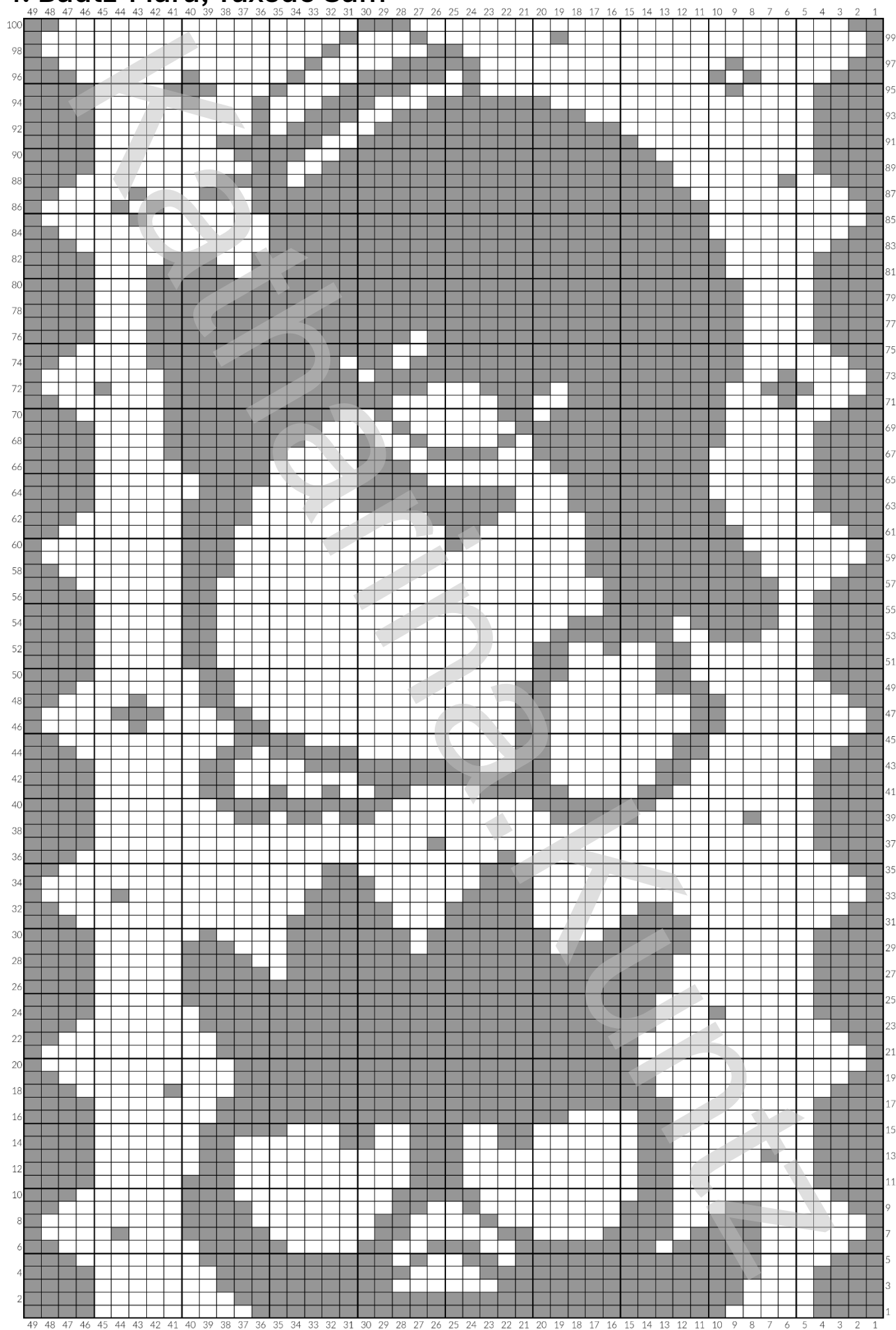
2. Hello Kitty, My Melody



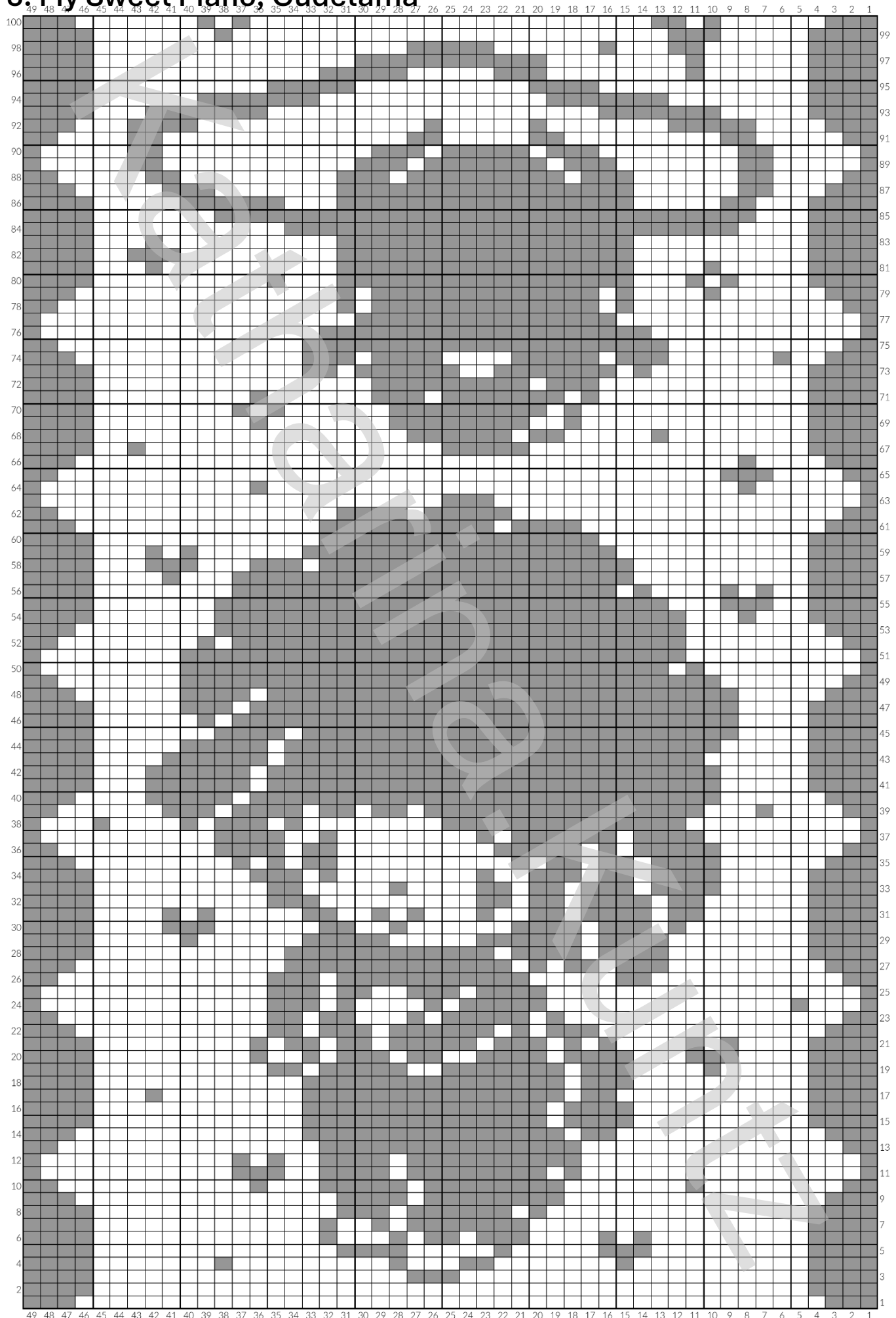
3. Hangyodon, Badtz-Maru



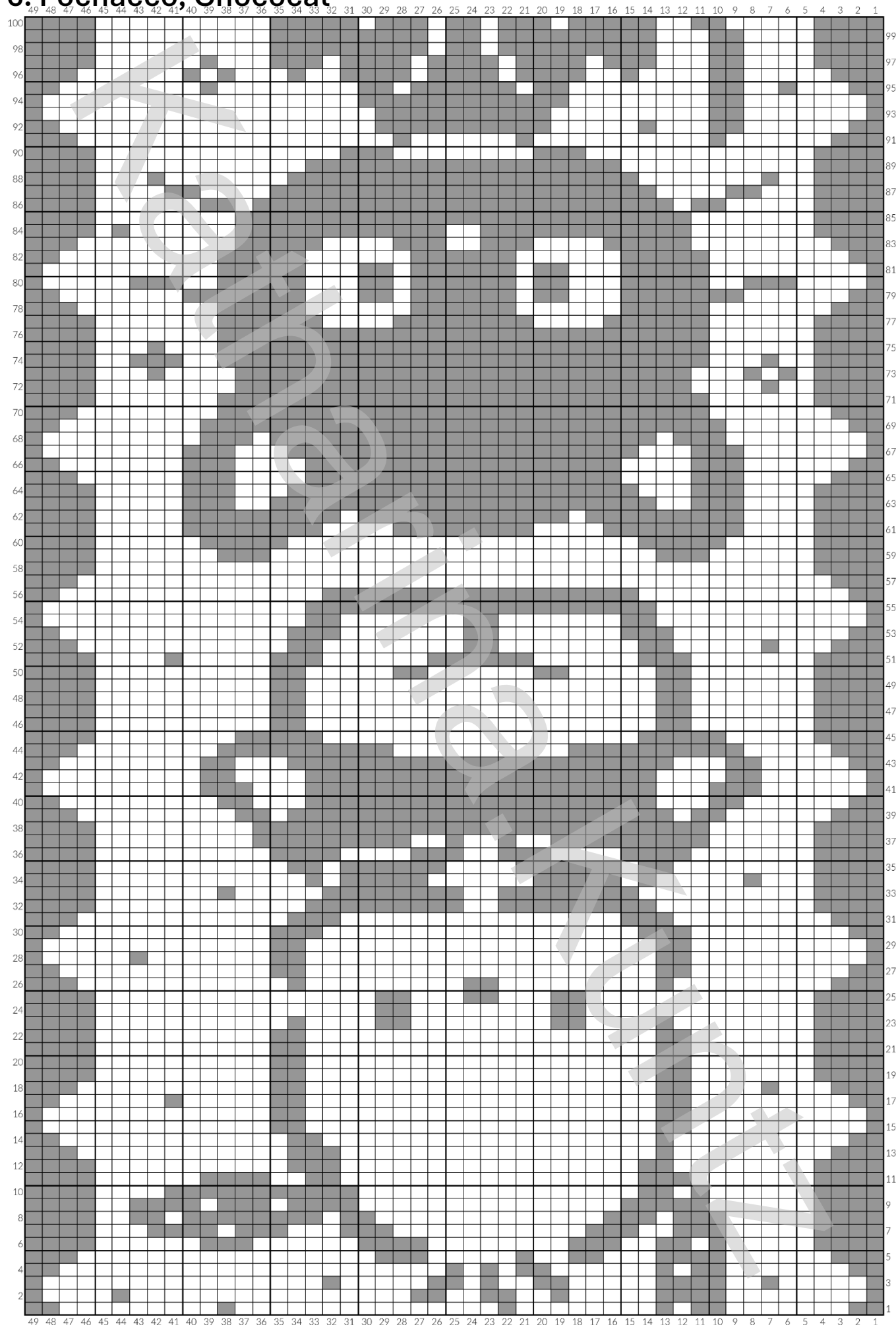
4. Badtz-Maru, Tuxedo Sam



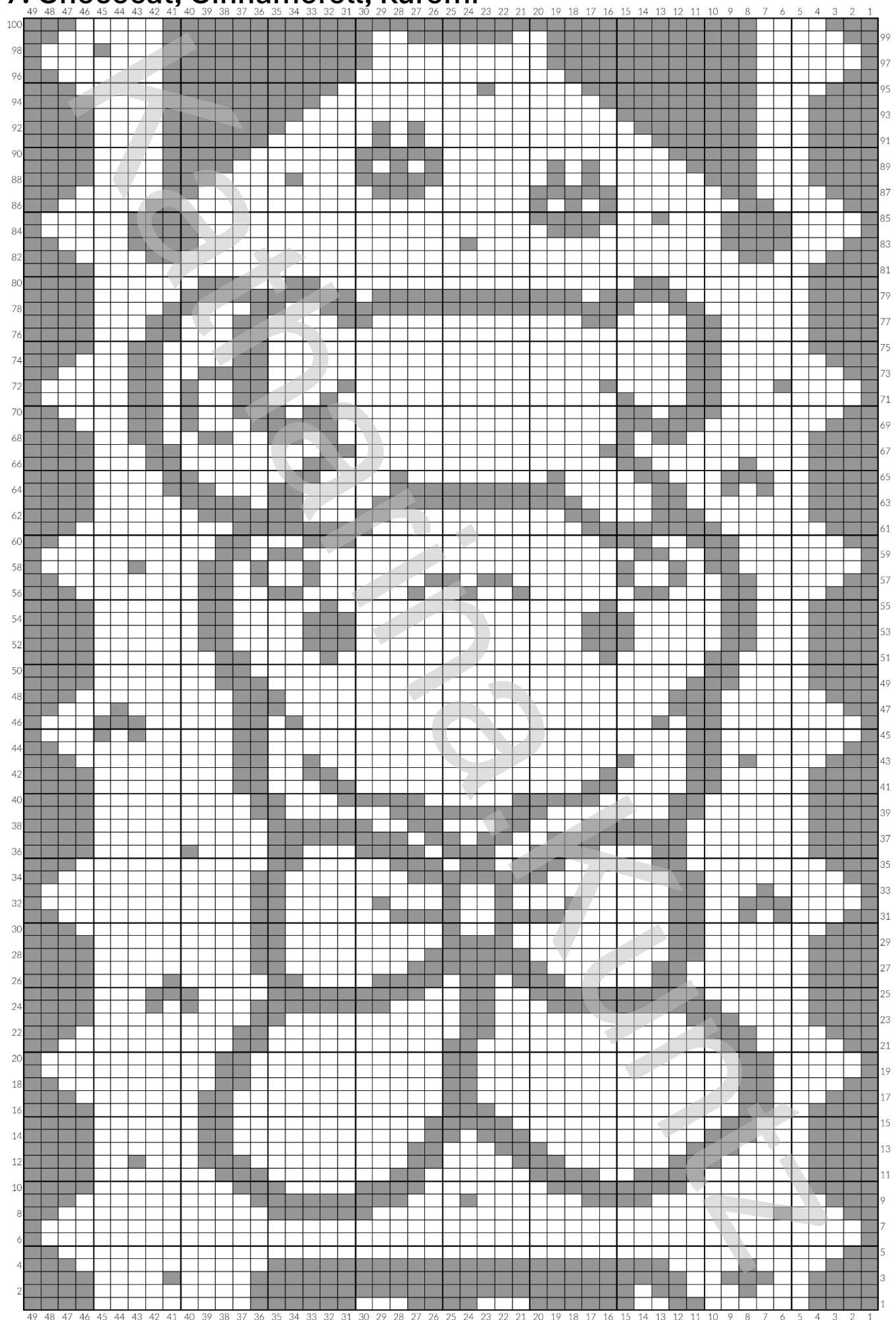
5. My Sweet Piano, Gudetama



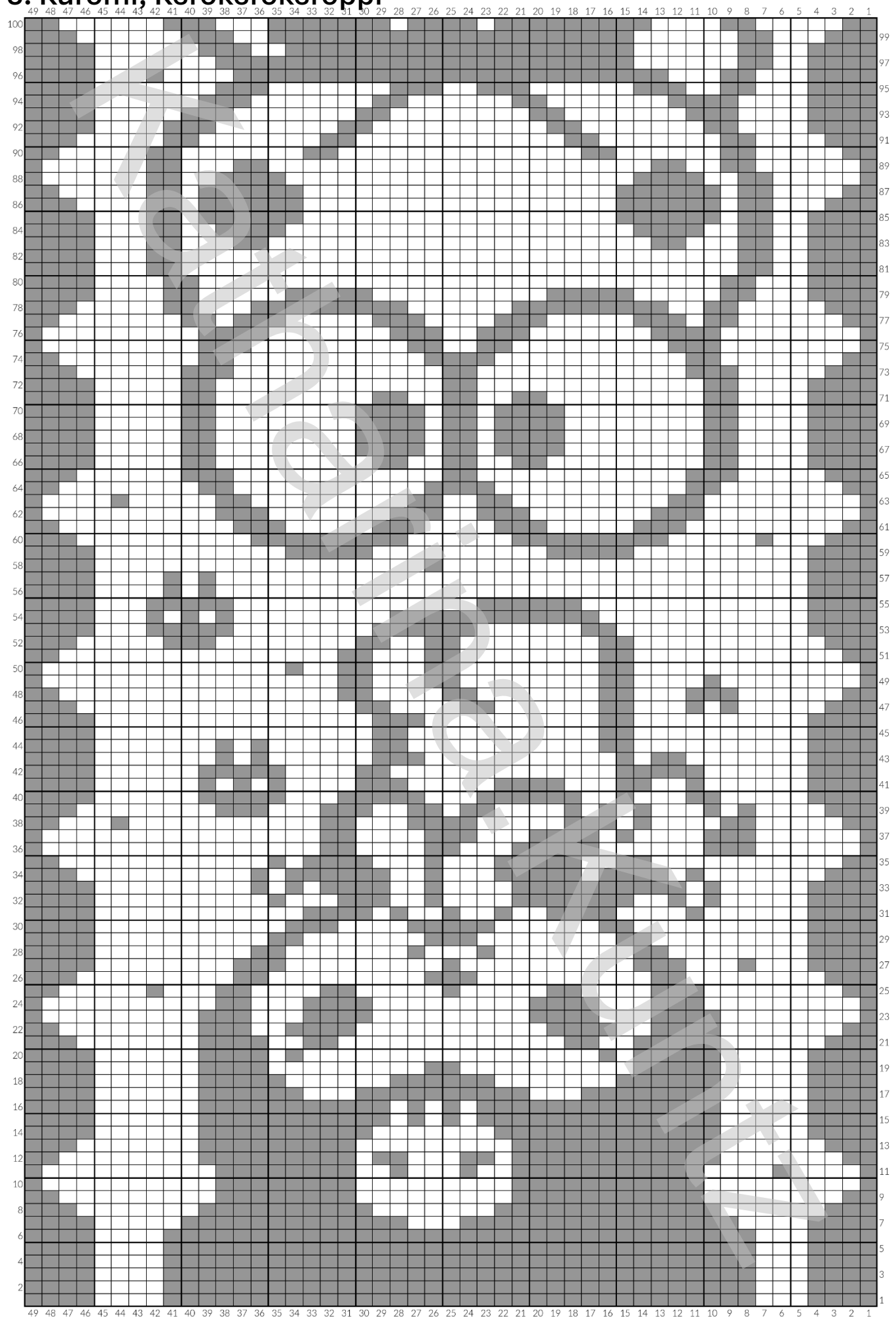
6. Pochacco, Chococat



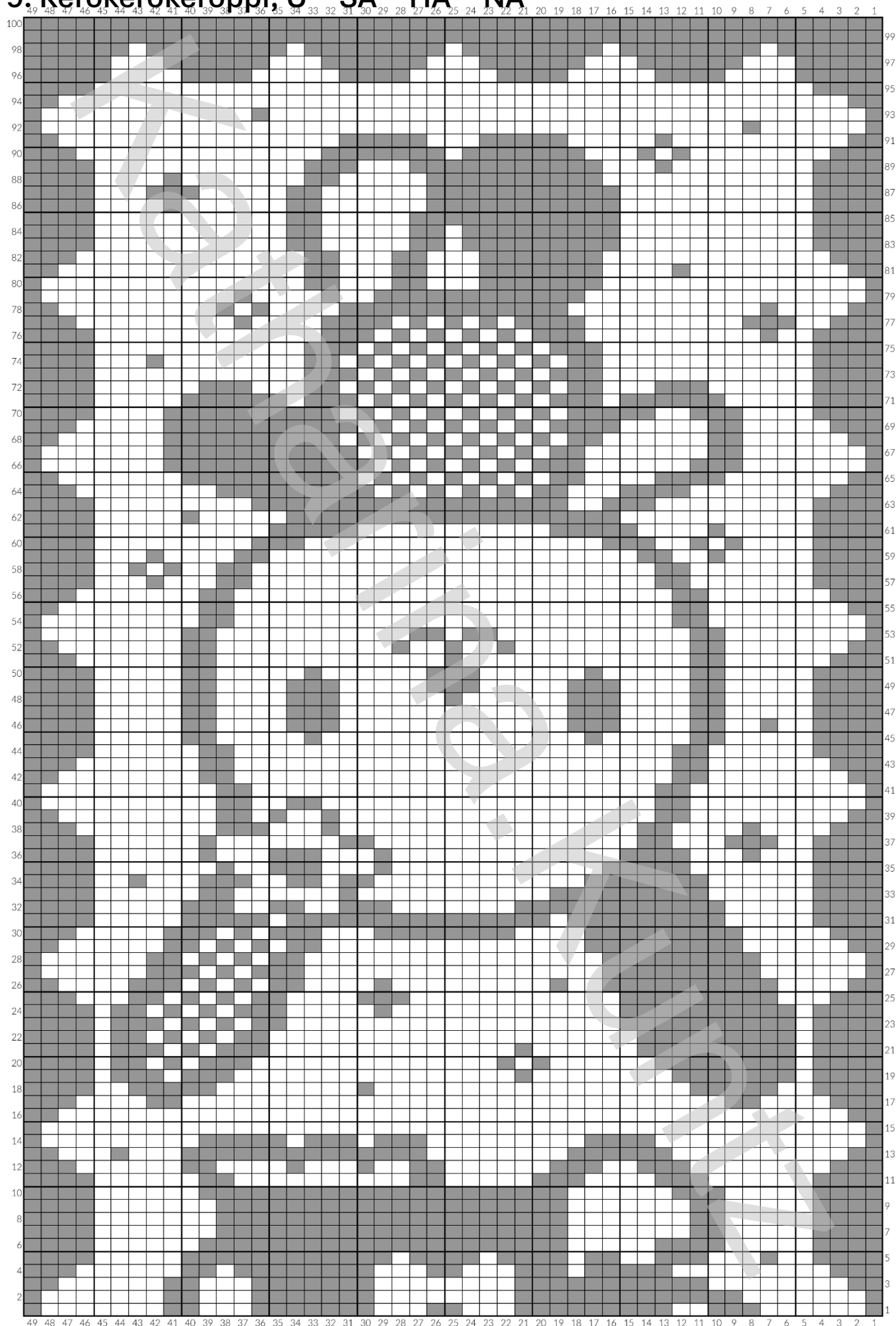
7. Chococat, Cinnamoroll, Kuromi



8. Kuromi, Kerokerokeroppi



9. Kerokerokeroppi, U ▪ SA ▪ HA ▪ NA





CUTE