



NOVITA

Rapujuhlat socks Novita Nalle and Muumitalo

Yarn

Novita Nalle

Novita Muumitalo

Difficulty

Medium

Designer name

Minna Metsänen

Size

Shoe size approx. 38(42) (EUR)

Novita Nalle

(061) Linen <150(150) g and <50 g

(549) Christmas <50(<50) g

(044) Graphite <50(<50) g

(160) Jeans <50(<50) g

(285) Saffron <50(<50) g and

Novita Muumitalo

(381) Snufkin <50(50) g

Other supplies

Double-pointed needles

Novita 3 mm (UK 11 / US 2½) or size needed to obtain gauge

Density

Stitch patterns

- Ribbing in the round: *k2, p2*, repeat *-*.
- Stockinette stitch in the round: knit all rows.
- Colourwork in the round: work stockinette st following the chart and instructions.

Note:

Twist the yarns around each other on the WS (at different points on back-to-back rows) to avoid floats longer than 5 sts.

Gauge

25 sts in colourwork = 10 cm / 4 in

Using Linen cast on 80(88) sts and divide them onto four needles, 20(22) sts each. The beginning of round is between needles I and IV. Work ribbing in the round for 3 cm, then knit 1 round.

Begin the colourwork pattern on row 1 of chart I(II). Work the 80(88) st pattern. Work rows 2-75 of the chart. On rows 22, 27, 32, 37, 42, 47, 52, 57 (and, **on size 42 only**, rows 62 and 67), **decrease** 2 sts: at the beginning of round skp (= slip 1 knitwise, k1, pass slipped st over), at the end of round k2tog. 64(68) sts now on the needles. Distribute the sts onto four needles, 16(17) sts each. Knit 1 round using Linen.

Begin **heel flap**: knit the sts on needle I onto needle IV = 32(34) sts. Turn work and leave the other sts on hold. Using Linen begin **reinforced pattern**:

Row 1: Purl the WS row. Turn work.

Row 2: *slip 1 purlwise with yarn in back, k1*, repeat *-* 14 more times.

Row 3: slip 1 purlwise with yarn in back, purl to end. Turn work.

Work rows 2-3 a total of 14(15) times [= 28(30) rows].

Begin **turning the heel**. Continue the reinforced pattern as established. Work until 12(13) sts remain at the left end. Skp, turn work. Slip 1, p8, p2tog, turn work. Slip 1, work to last 11(12) sts, skp. Continue in this manner, decreasing at the ends with 10 sts in the middle. When only the middle sts remain, divide the sts onto two needles, 5 sts each. Knit the 5 right-hand sts. The beginning of round is now here.

Using needle I pick up 14(15) sts from the left end of the heel flap + 1 st from between the needles. Using Linen knit the 5 heel flap sts and knit the picked-up sts through the back loop. Knit the sts on needles II and III. Pick up 14(15) sts from the right end + 1 st from between the needles. Knit the picked-up sts through the back loop onto needle IV and knit the 5 flap sts.

With these 72(76) sts resume the colourwork pattern on row 1 of chart II and begin **gusset decreases** on needles I and IV following the chart. Work rows 2-13 of the chart. 2 sts decreased on rows 2, 4, 6 and 8. 64(68) sts now on the needles, 16(17) sts each.

Resume the colourwork pattern on row 14 of chart III(IV). Work rows 15-40(44) of the chart or work until the sole measures 19(22) cm. Using Linen knit 1 round and at the same time evenly decrease 2 sts on each needle = 56(60) sts, 14(15) sts per needle.

Begin **toe decreases**: at the end of needles I and III, k2tog, k1; at the beginning of needles II and IV, k1, skp. Decrease as established on every other round until 6 sts remain on each needle. Then work the decreases on every round. When 8 sts remain, break yarn, pull it through the sts and securely weave in.

Knit the other sock in the same manner.

Finishing

Embroider the eyes with Graphite using French knots. With 2 plies of Christmas, embroider the antennae using back stitches.

Lightly steam the socks.

Chart I

Work rows 1-75

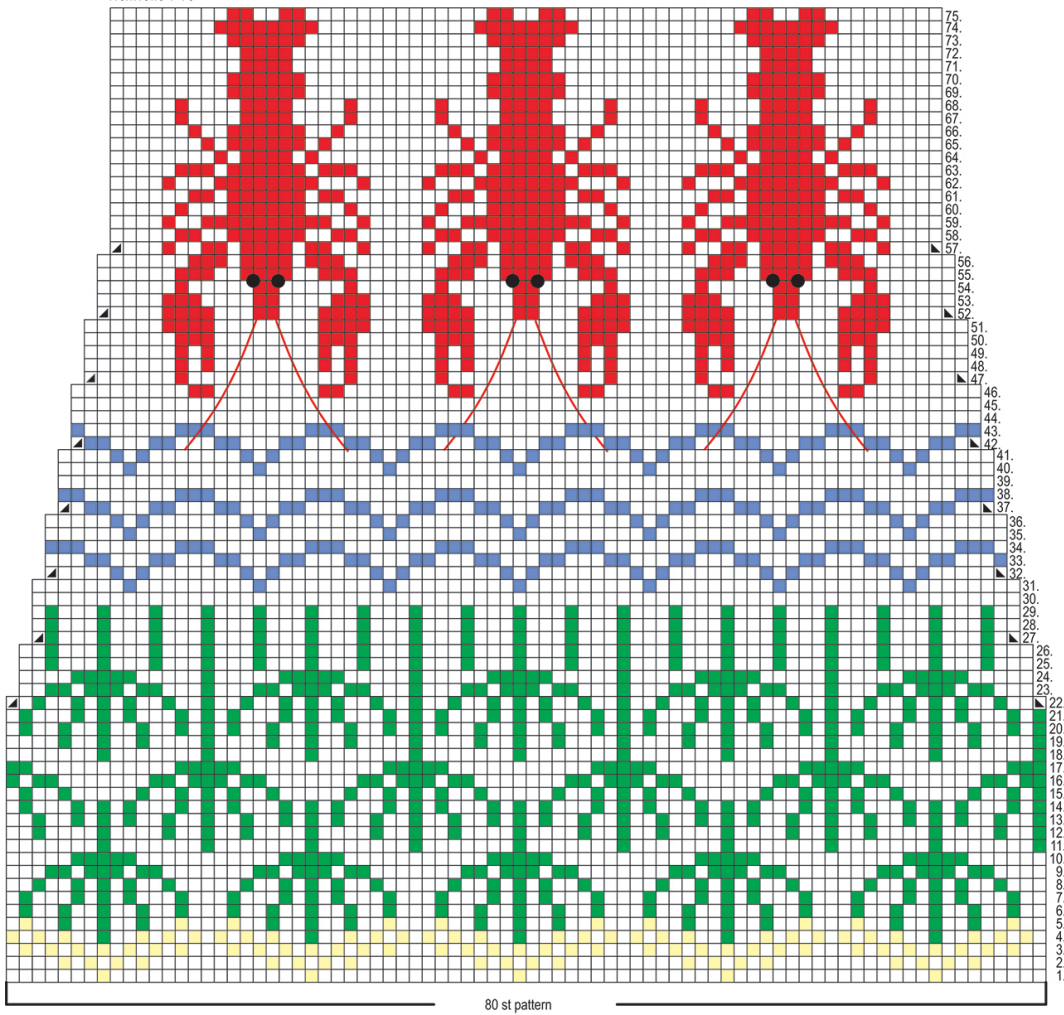
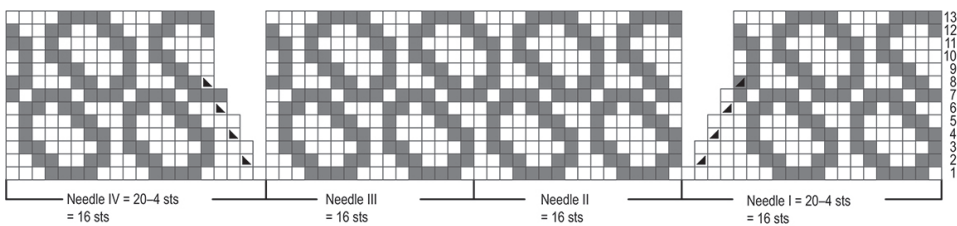
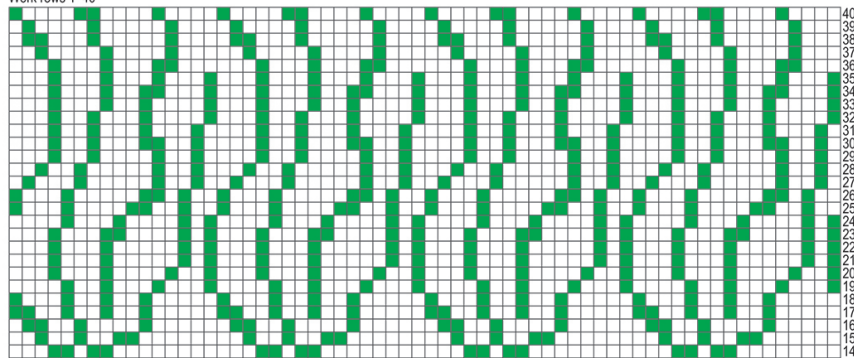


Chart III

Work rows 1-40



- = knit st, Linen (061)
- = knit st, Saffron (285)
- = knit st, Snufkin (381)
- = knit st, Jeans (160)
- = knit st, Christmas (549)
- = knit st, Graphite (044)
- ▢ = slip 1 st knitwise, k1, pass the slipped st over
- ▣ = knit 2 sts together

Chart II
Work rows 1-75

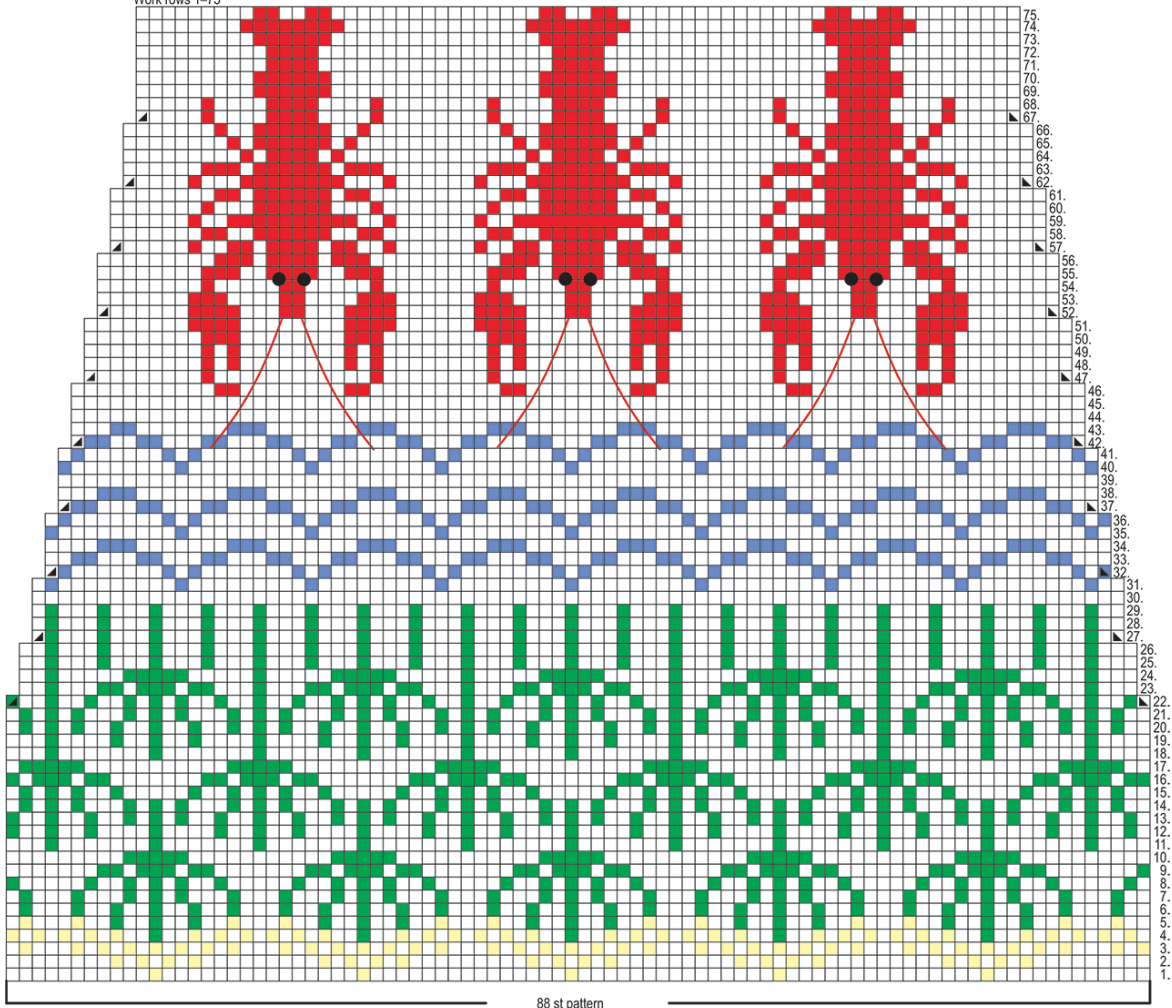
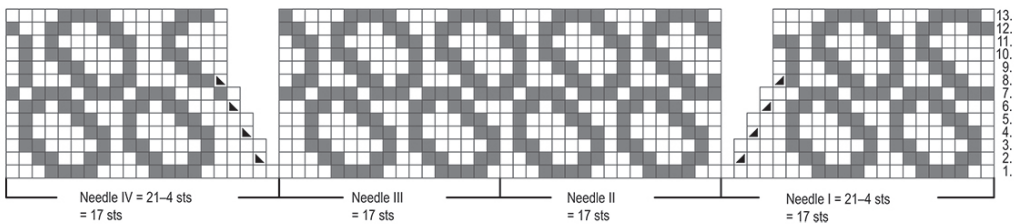
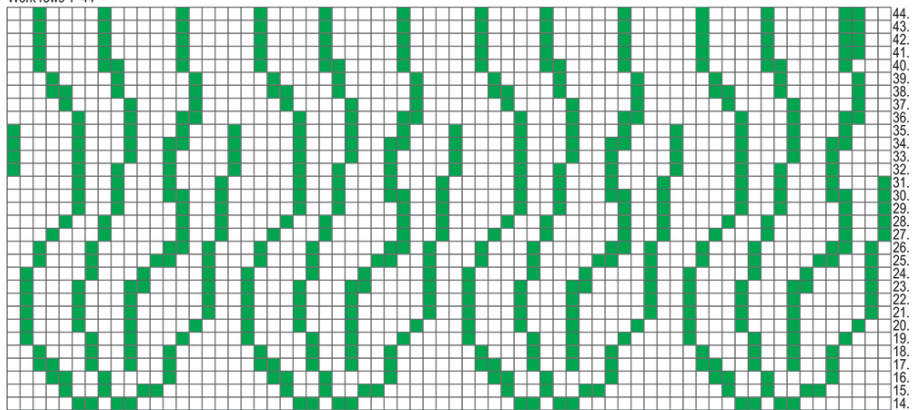


Chart IV
Work rows 1-44



- = knit st, Linen (061)
- = knit st, Saffron (285)
- = knit st, Snufkin (381)
- = knit st, Jeans (160)
- = knit st, Christmas (549)
- = knit st, Graphite (044)
- ▲ = slip 1 st knitwise, k1, pass the slipped st over
- ▲ = knit 2 sts together