



COWLTOPUS

Cowltopus was Fall 2024's mystery knit-a-long... but you can knit it anytime. It is broken down into four clues, Clues 1 and 2 are the hood, and Clues 3 and 4 the neck. The neck can be knit with brioche (complextopus) or ribbing (simplopus). The pattern includes videos that walk you through each step of the pattern and explains your choices as you knit! HAVE FUN!!!

See more photos- <http://www.nelkindesigns.com/cowltopus>

Have questions?

Ravelry- <http://www.nelkindesigns.com/ravelry>

Facebook- <http://www.nelkindesigns.com/facebookgroup>

MATERIALS

MC (main color)- 4 mini-skeins (MC1 - MC4); 49 yards [45 meters] each of DK weight yarn (this is a total of 196 yards [179 m])
OR

1 full skein of DK weight yarn (should be at least 196 yards [179 m])

CC (contrast color)- 4 mini-skeins (CC1 - CC4); 49 yards [45 meters] each of DK weight yarn (this is a total of 196 yards [179 m])
OR

1 full skein of DK weight yarn (should be at least 196 yards [179 m])

See yarn notes; you can substitute one full skein for either the MC, or the CC, or for BOTH!

Yarn I Used:

Fiber MacGyver, Merino DK;
(100% Superwash Merino); 49 yards [45 meters]/ 0.7 ounces [20 grams]

- **Ndl A-** US Size 7 [4.5 mm] 36 inch [92 cm] or longer circular needle, or size needed to obtain gauge
- **Ndl B-** US Size 6 [4 mm] 16 or 20 inch [41 or 51 cm] circular needle, or one size smaller than needed to obtain gauge
- Stitch markers
- Tapestry needle
- Digital scale (super helpful, but not necessary)
- 4 - 4.5mm crochet hook (optional)

GAUGE

18 stitches and 26 rows = 4 inches [10 cm] in Stockinette stitch, lightly-blocked on ndl A (see notes)

FINISHED MEASUREMENTS

Hood- 13 inches [33 cm] tall

Neck Circumference- 19 inches [48 cm] around

Neck Height- 8 - 10 inches long [20 - 25 cm] (this is adjustable)

CHOOSING YOUR YARN

MC (main color)-

4 mini-skeins (MC1 - MC4); 49 yards [45 meters] each of DK weight yarn in a gradient of dark to light

OR

1 full skein of DK weight yarn (should be at least 196 yards [179 meters])

CC (contrast color)-

4 mini-skeins (CC1 - CC4); 49 yards [45 meters] each of DK weight yarn in a gradient of light to dark

OR

1 full skein of DK weight yarn (should be at least 196 yards [179 meters])

The MC and CC I used are DK weight and have at least 246 yards [225 meters] to 3.5 ounces [100 grams].

Your MC and CC should contrast with each other at all times, watch the pre-clue video. That will explain more!

- You may use solid, variegated, gradient, OR speckled skeins for your MC and CC as long as they contrast with each other.
- I chose for my MC to be solid and my CC to be the party!
- If both the MC and CC are highly variegated or speckled, you are going to lose some of the contrast, so it is a good idea to keep one of them mellow!



COWLTOPUS MKAL INTRO VIDEO:

www.nelkindesigns.com/cowltopus_getkraken

GETTING READY FOR CLUE 1

Prepare Your Yarn

MC (MAIN COLOR)

If you are working with 4 mini-skeins for your MC: Make a magic ball with magic knots starting with the lightest **MC (MC4)** on the inside of the ball, and ending with the darkest **MC (MC1)** on the outside. You'll be knitting from the outside to the inside of the ball.

IMPORTANT: Before tying **MC3** to **MC2**, cut off a 12 inch [30 cm] length of **MC3** and set aside. Don't forget where you put this, you'll need it at the end of **Clue 4**.

Note: If you dislike magic knots or don't trust them, then you can skip using them. Just end each color with a 6 inch [15 cm] tail and weave those ends in later!

If you are working with a single color for MC: You can wind that into one ball.

CC (CONTRAST COLOR)

If you are working with 4 mini-skeins for your CC: Make a magic ball with magic knots and your 4 mini-skeins starting with the darkest **CC (CC4)** on the inside of the ball, and ending with the lightest **CC (CC1)** on the outside. You'll be knitting from the outside to the inside of the ball.

If you are working with a single color for CC: You can wind that into one ball.

Work Your Gauge Swatch

With **MC4** OR **MC**, cast on 24 sts using **ndl A**.

If you know you knit loosely, then go down a needle size.

If you knit tightly, go up!

Work your swatch for at least 3 inches [7.5 cm].

Bind off, but DO NOT CUT YARN (unless you have tons).

Soak your swatch in warm water for 5 minutes, if not longer. You can use a little wool wash if you want, but it's not necessary.

Take your swatch out of its bath and squeeze out all the water in a towel.

Lay out your swatch flat. Smooth out the swatch, but DO NOT pin it. Let dry completely. Then, bat it about a bit with your tentacles so the stitches can relax.



MAKING A MAGIC BALL:

www.nelkindesigns.com/magicballtutorial



MAKING A MAGIC KNOT:

www.nelkindesigns.com/MagicKnotTutorial

Measure your stitch gauge. You want to do this over multiple inches, making sure you keep away from the edges to get an accurate stitch count. This is why you are casting on 6 more stitches than called for.

If you get between 17.5 and 18.5 sts/4 inches [10 cm], I wouldn't re-swatch, but if the margin of error is bigger than that... I would!

You can also measure your row gauge, BUT in this project the stitch gauge is more important, so it's not necessary to get too worried about it!

If you are working from a kit you will most likely need the yarn from your swatch, so once you get gauge, rip it out and steam your yarn to get the kink out of it.

READING AND WATCHING LIST! (aka Knitertainment!)

Let's learn about Octopuses together!!!

Join the chatter in our Ravelry and Facebook groups
(linked on page 1)

Read/Listen

The Soul of an Octopus: A Surprising Exploration Into the Wonder of Consciousness

by Sy Montgomery

Remarkably Bright Creatures

by Shelby Van Pelt

Other Minds: The Octopus, the Sea, and the Deep Origins of Consciousness

by Peter Godfrey-Smith

Watch

Secrets of the Octopus (National Geographic)

My Octopus Teacher (Netflix)

Octopussy (Classic James Bond)

Abbreviations

- CC- contrast color
- cn- cable needle
- con't- continue
- dec- decreased
- k- knit
- k2tog- knit 2 sts together [1 st dec]
- inc- increase
- lh- left hand
- MC- main color
- ndl(s)- needle(s)
- p- purl
- p2tog- purl 2 sts together [1 st dec]
- pm- place marker
- rep- repeat
- rh- right hand
- rnd(s)- round(s)
- RS- right side
- ryo- reverse yarnover (left leg of the yarnover to the front of the needle) [1 st inc]
- sl- slip st
- sl1yf- slip 1 st purlwise with yarn in front
- sl2yb- slip 2 sts purlwise with yarn in back
- slm- slip marker
- ssk- slip next 2 sts, one by one, as if to knit; insert tip of lh ndl from left to right into the fronts of these 2 slipped sts and knit them together [1 st dec]
- st(s)- stitch(es)
- tog- together
- WS- wrong side
- wyib- with yarn in back
- wyif- with yarn in front
- yo- yarnover [1 st increased]

Sucker without a cable needle [over 4 sts]-

With rh ndl go into front of 2nd st on lh ndl purlwise, slip both 1st and 2nd sts off the lh ndl, then replace 1st st onto lh ndl and slip st from rh ndl to lh ndl, k1, slip next st to rh ndl purlwise wyib. With lh ndl go underneath the bottom CC float at the back of work lifting it up onto the lh ndl, slip st from rh ndl to lh ndl, p2tog. Leave yarn to front of work. With rh ndl go into back of 2nd st on lh ndl purlwise, slip both 1st and 2nd sts off the lh ndl, place 1st st back onto lh ndl, then slip st from rh ndl to lh ndl, p1, k1.

Sucker with a cable needle [over 4 sts]- Sl1 purlwise to cn and hold to back, k1, with lh ndl go underneath the bottom CC float at the back of the work lifting it up onto the lh ndl, sl1 from cn back to lh ndl, p2tog. Leave yarn to front of work. Sl1 purlwise to cn and hold to front, p1, k1 from cn.

CLUE 1 [50 Rows]

With **ndl A** and starting with **MC**, cast on 130 sts with Judy's Magic Cast On. You will have 65 sts on your top ndl and 65 on the bottom ndl.

Flip ndls so that last cast on st is on the bottom, pull the bottom ndl out to the right so that the sts slide onto the cord and begin working **Setup Row 1** along the top 65 sts, when you get to the end of the ndl, flip it over, pull out the bottom ndl as before and continue across.

You will continue like this until you can work without needing to pull out the needle to make the "turn" at the inside of the cast on. For me this was at the end of the first repeat.

Setup Row 1 (RS): With MC, k1, sl1yf, k1, pm, k12, pm, k50, pick up one st along cast on, flip ndls to work second half, knit to the last 15 sts, pm, k12, pm, k1, sl1yf, k1. [131 sts]

Setup Row 2 (WS): With MC, sl1yf, k1, sl1yf, slm, k4, p4, k4, slm, knit to next marker, slm, k4, p4, k4, slm, sl1yf, k1, sl1yf.

Work **Rows 1 - 16** from **Clue 1 Charts** or **Written Directions** three times. DO NOT CUT YARNS.

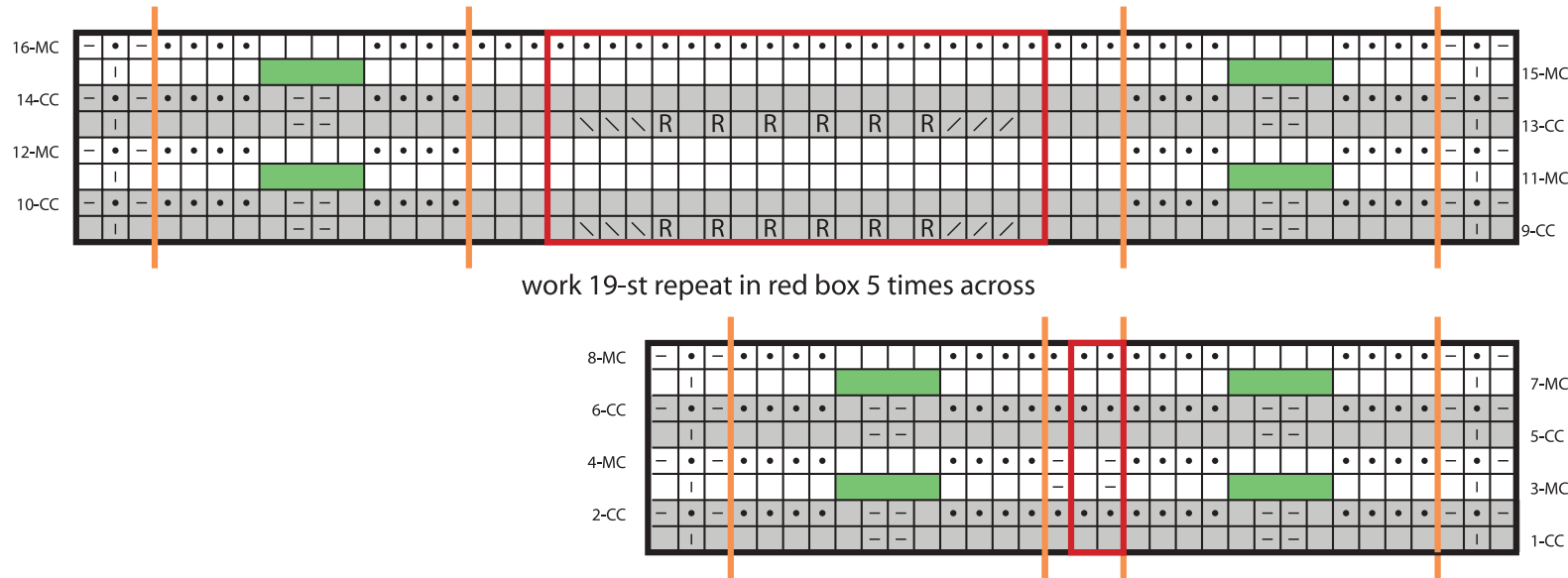
If working from the chart:

Rows 1 - 8 on RS rows repeat the 2 sts in the red box to 1 st before the 3rd marker, on WS rows repeat the 2 sts in the red box to the 3rd marker.

Rows 9 - 16 repeat the 19 sts in the red box 5 times.

Note: As you change colors at the beginning of every RS row, lay the yarn you just worked with OVER the yarn you are about to start working with. This will catch it in the integrated I-Cord edging carrying it up hidden in the edge.

Clue 1 Chart [131 sts]



Orange lines denote marker placement

RS Rows- work 2-st repeat in red box to 1 st before 3rd marker
WS Rows- work 2-st repeat in red box to 3rd marker



VIDEO FOR CLUE 1:

www.nelkindesigns.com/cowltopus_Clue1

Clue 1 Key

- ☐ knit (RS), purl (WS)
- purl (RS), knit (WS)
- sl st purlwise wyib (RS)
sl st purlwise wyif (WS)
- | sl st purlwise wyif
- R reverse yarnover
- / k2tog
- \ ssk
- sucker

Clue 1 Written Directions [131 sts]

Row 1 (RS): With CC, k1, sl1yf, k1, slm, k5, sl2yb, k5, slm, knit to the next marker, slm, k5, sl2yb, k5, slm, k1, sl1yf, k1.

Row 2 (WS): With CC, sl1yf, k1, sl1yf, slm, k4, p1, sl2yf, p1, k4, slm, knit to the next marker, slm, k4, p1, sl2yf, p1, k4, slm, sl1yf, k1, sl1yf.

Row 3: With MC, k1, sl1yf, k1, slm, k4, sucker, k4, slm, [sl1yb, k1] to one stitch before next marker, sl1yb, slm, k4, sucker, k4, slm, k1, sl1yf, k1.

Row 4: With MC, sl1yf, k1, sl1yf, slm, k4, p4, k4, slm, sl1yf, [p1, sl1yf] to marker, slm, k4, p4, k4, slm, sl1yf, k1, sl1yf.

Row 5: Same as **Row 1**.

Row 6: Same as **Row 2**.

Row 7: With MC, k1, sl1yf, k1, slm, k4, sucker, k4, slm, knit to the next marker, slm, k4, sucker, k4, slm, k1, sl1yf, k1.

Row 8: With MC, sl1yf, k1, sl1yf, slm, k4, p4, k4, slm, knit to the next marker, slm, k4, p4, k4, slm, sl1yf, k1, sl1yf.

Row 9: With CC, k1, sl1yf, k1, slm, k5, sl2yb, k5, slm, k3, [k1, k2tog three times, (ryo, k1) five times, ryo, ssk three times, k1] five times, k3, slm, k5, sl2yb, k5, slm, k1, sl1yf, k1.

Row 10: With CC, sl1yf, k1, sl1yf, slm, k4, p1, sl2yf, p1, k4, slm, purl to the next marker, slm, k4, p1, sl2yf, p1, k4, slm, sl1yf, k1, sl1yf.

Row 11: Same as **Row 7**.

Row 12: With MC, sl1yf, k1, sl1yf, slm, k4, p4, k4, slm, purl to next marker, slm, k4, p4, k4, slm, sl1yf, k1, sl1yf.

Row 13: Same as **Row 9**.

Row 14: Same as **Row 10**.

Row 15: Same as **Row 7**.

Row 16: Same as **Row 8**.

CLUE 2 [45 rows]

Work **Rows 1 - 45** from **Clue 2 Chart** or **Written Directions** once. [95 sts; 36 sts dec]

DO NOT CUT YARNS.

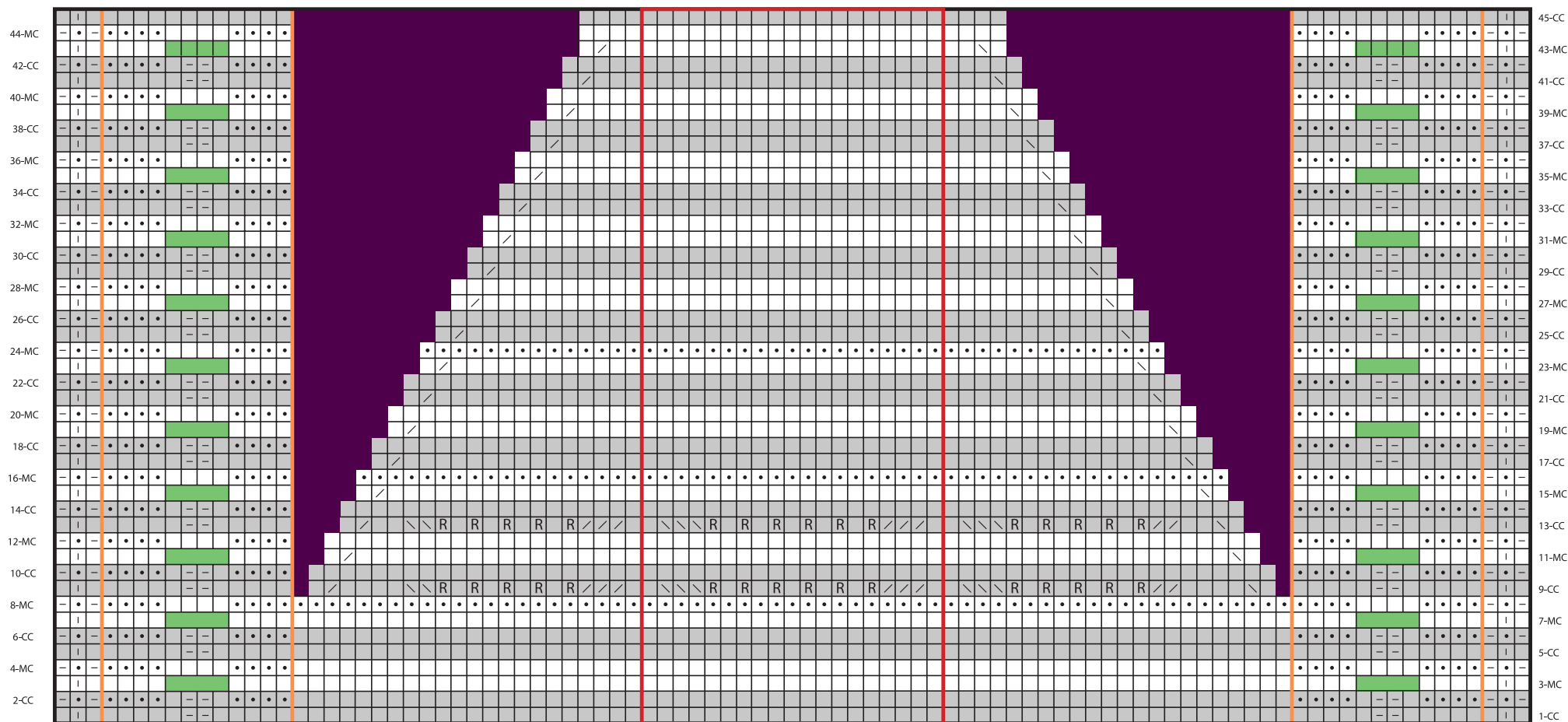
If you are working from the chart: On **Row 45**, remove all markers.



VIDEO FOR CLUE 2:

www.nelkindesigns.com/cowltopus_Clue2

Clue 2 Chart [starts 131 sts, ends 95 sts]



work 19-st repeat in red box 3 times across

Clue 2 Key

- knit (RS), purl (WS)
- purl (RS), knit (WS)
- sl st purlwise wyib (RS)
- sl st purlwise wyif (WS)
- ! sl st purlwise wyif
- R reverse yarnover
- / k2tog
- \ ssk
- sucker
- no stitch

Orange lines denotes marker placement.

Clue 2 Written Directions [starts 131 sts, ends 95 sts]

Row 1 (RS): With CC, k1, sl1yf, k1, slm, k5, sl2yb, k5, slm, knit to the next marker, slm, k5, sl2yb, k5, slm, k1, sl1yf, k1.

Row 2 (WS): With CC, sl1yf, k1, sl1yf, slm, k4, p1, sl2yf, p1, k4, slm, purl to the next marker, slm, k4, p1, sl2yf, p1, k4, slm, sl1yf, k1, sl1yf.

Row 3: With MC, k1, sl1yf, k1, slm, k4, sucker, k4, slm, knit to the next marker, slm, k4, sucker, k4, slm, k1, sl1yf, k1.

Row 4: With MC, sl1yf, k1, sl1yf, slm, k4, p4, k4, slm, purl to the next marker, slm, k4, p4, k4, slm, sl1yf, k1, sl1yf.

Row 5: Same as **Row 1**.

Row 6: Same as **Row 2**.

Row 7: Same as **Row 3**.

Row 8: With MC, sl1yf, k1, sl1yf, slm, k4, p4, k4, slm, knit to the next marker, slm, k4, p4, k4, slm, sl1yf, k1, sl1yf.

Row 9: With CC, k1, sl1yf, k1, slm, k5, sl2yb, k5, slm, k1, ssk, k4, k2tog twice, (ryo, k1) four times, ryo, ssk three times, k1, [k1, k2tog three times, (ryo, k1) five times, ryo, ssk three times, k1] three times, k1, k2tog three times, (ryo, k1) four times, ryo, ssk twice, k4, k2tog, k1, slm, k5, sl2yb, k5, slm, k1, sl1yf, k1. [129 sts; 2 sts dec]

Row 10: Same as **Row 2**.

Row 11: With MC, k1, sl1yf, k1, slm, k4, sucker, k4, slm, k1, ssk, knit to 3 sts before marker, k2tog, k1, slm, k4, sucker, k4, slm, k1, sl1yf, k1. [127 sts; 2 sts dec]

Row 12: Same as **Row 4**.

Row 13: With CC, k1, sl1yf, k1, slm, k5, sl2yb, k5, slm, k1, ssk, k2, k2tog twice, (ryo, k1) four times, ryo, ssk three times, k1, [k1, k2tog three times, (ryo, k1) five times, ryo, ssk three times, k1] three times, k1, k2tog three times, (ryo, k1) four times, ryo, ssk twice, k2, k2tog, k1, slm, k5, sl2yb, k5, slm, k1, sl1yf, k1. [125 sts; 2 sts dec]

Row 14: Same as **Row 2**.

Row 15: Same as **Row 11**. [123 sts; 2 sts dec]

Row 16: Same as **Row 8**.

Row 17: With CC, k1, sl1yf, k1, slm, k5, sl2yb, k5, slm, k1, ssk, knit to 3 sts before marker, k2tog, k1, slm, k5, sl2yb, k5, slm, k1, sl1yf, k1. [121 sts; 2 sts dec]

Row 18: Same as **Row 2**.

Row 19: Same as **Row 11**. [119 sts; 2 sts dec]

Row 20: Same as **Row 4**.

Row 21: Same as **Row 17**. [117 sts; 2 sts dec]

Row 22: Same as **Row 2**.

Row 23: Same as **Row 11**. [115 sts; 2 sts dec]

Row 24: Same as **Row 8**.

Rows 25 - 44: Repeat **Rows 17 - 20** five times. [95 sts; 20 sts dec]

Row 45 (RS): With CC, removing markers as you reach them, k1, sl1yf, k1, knit to last 3 sts, k1, sl1yf, k1.

CLUE 3

With this clue you get to choose if you want your Cowltopus to be even more fancy, or if you want to simplify things a bit... Complextopus plays with Brioché, and the Simplopus version is 2 x 2 ribbing!



VIDEO FOR CLUE 3:

www.nelkindesigns.com/cowltopus_Clue3

Complextopus (Brioché Style)

• Brioché Stitch Basics-

The Brioché stitch is a tucked stitch in which one row of knitting is created through two passes over the stitches:

- On the first pass, half the stitches are worked, and the other half are slipped.
- On the second pass, the previously slipped stitches are worked, and the previously worked sts are slipped.

The slipped stitches are combined with a yarnover, and then the slipped stitches are worked together with their yarnover on the next round. Pay careful attention to which yarn color you are using on each round... when you get the hang of the stitch, it becomes pretty obvious if you have gone “off.”

- **Brioché in the Round Trick-** Keep an eye on the end of the round when you are changing colors... you will have two sl1yo's next to each other at the end of the rnd marker, and this can create confusion. An easy trick is to always end every rnd with your yarn to the front of your work. This will lock the sl1yo in place. Then pick up the next yarn without twisting the two yarns and you'll be good to go!
- brk (Brioché knit)- Knit the slipped st from the previous rnd together with its yo
- brp (Brioché purl)- Purl the slipped st from the previous rnd together with its yo
- sl1yo following a brk- Bring the working yarn to the front of the work (in between the needles), slip the next stitch purlwise, and bring the yarn over the right needle to the back of the work ready to work the next brk.
- sl1yo following a brp- The working yarn is at the front of the work. Slip the next stitch purlwise, bring the yarn over the right needle to the back of the work, and then bring the yarn to the front (in between the needles) ready to work a brp.

Setup Rnd (RS): With RS facing, and with CC, join into the round by unknitting the last st on the rh ndl and slipping it to the lh ndl, with **ndl B**, k2tog (this is the first and last st being worked together), k2, purl to last 3 sts, k3, place marker for end of rnd. [94 sts; 1 st dec]
Don't worry too much if a little gap forms at the beginning of the join, we'll tidy her up in Clue 4.

Set **ndl A** aside, you won't be using it again.

Brioché Setup Rnd- MC: *K1, sl1yo; rep from * around. Leave MC to front of work.

Brioché Setup Rnd- CC: With CC, *sl1yo, brp; rep from * around. Leave CC to front of work.
Continue to leave your yarn to the front of the work at the end of every rnd.

Rnd 1-MC: With MC, *brk, sl1yo; rep from * around.

Rnd 1-CC: With CC, *sl1yo, brp; rep from * around.

If you are working with a magic ball for **MC**, rep **Rnd 1-MC and Rnd 1-CC** until your **MC3** is used up, ending with a **CC** rnd. DO NOT CUT YARNS.

Note: You might have a partial round of **MC3** left over to use in **CLUE 4**, or you might use a bit of **MC4** to finish **Clue 3**. Either option is fine! If you did not hold back a 12 inch [30 cm] length of **MC3** do that now.

If you are working with a single color for **MC**, work **Rnd 1-MC and Rnd 1-CC** 18 times more, ending with **CC**.

Clue 3 Con't

Simplopus (Ribbing Style)

I have a trick for making my 2 x 2 ribbing NEAT... check out the video for Clue 3 :)!

Setup Rnd 1 (RS): With RS facing, and with CC, join into the round by unknitting the last st on the rh ndl and slipping it to the lh ndl, with **ndl B**, k2tog (this is the first and last st being worked together), k2, [p28, pfb] twice, purl to last 3 sts, k3, place marker for end of rnd. [96 sts; 1 st inc]

Don't worry too much if a little gap forms at the beginning of the join, we'll tidy her up in Clue 4.

Set **ndl A** aside, you won't be using it again.

Ribbing Rnd 1: With MC, knit around.

Ribbing Rnd 2: With MC, lift right leg of st below st on lh ndl onto ndl, knit it together with the first st, k1, p2, *k2, p2; rep from * around.

Ribbing Rnd 3: With MC, *k2, p2; rep from * around.

Ribbing Rnd 4: With CC, knit around.

Ribbing Rnd 5: With CC, lift right leg of st below st on lh ndl onto ndl, knit it together with the first st, k1, p2, *k2, p2; rep from * around.

Ribbing Rnd 6: With CC, *k2, p2; rep from * around.

Rep **Rnds 1 - 6** until you run out of **CC3**.

Note: If you are working with a magic ball for **MC** and did not hold back a 12 inch [30 cm] length of **MC3** do that now.

Make a note of what round you end on, it does not matter if you end in the middle of a round or partway through a 3-row section.

DO NOT CUT YARNS.

CLUE 4 Complextopus (Brioche Style)

With this clue you continue working Complextopus or Simplopus as you did in Clue 3. Simplopus directions are on page 13.

Complextopus (Brioche Style)

Note: Watch video. If you don't want to work the Brioche Wave Stitch, keep your stitch count at 94 sts and **MC** and **CC** as is, and work as for **Clue 3** until you have 0.14 ounces [4 grams] of **CC** left. Then go onto the **Final Rnds** and **Bind Off** below.

Con't with **ndl B**, note that your **MC** and your **CC** are switching roles.

Setup Rnd 1-CC: With CC, [brk, sl1yo] 26 times, br3st inc, sl1yo, [brk, sl1yo] 19 times, br3st inc, sl1yo. [98 sts; 4 sts inc]

Setup Rnd 1-MC: With MC, [sl1yo, brp] 26 times, sl1yo, p1, [sl1yo, brp] 20 times, sl1yo, p1, sl1yo, brp.

Setup Rnd 2-CC: With CC, *[brk, sl1yo] 7 times, pm; rep from * 5 times more, [brk, sl1yo] 7 times. Markers are placed every 14 sts.

Setup Rnd 2-MC: With MC, *sl1yo, brp; rep from * around.

Work **Rnds 1 - 10** from the **Clue 4 Chart** or **Written Instructions** once. If you are working from the chart you will be repeating it 7 times around.

Weigh your **MC** and **CC** and write down their weights.

Work **Rnds 1 - 2** from the **Clue 4 Chart** or **Written Instructions** once more.

Weigh your **MC** and **CC** again and subtract this weight from above.

This is how much yarn of each color it takes to work 2 rnds.

Continue to work the second repeat of the **Clue 4 Chart** or **Written Instructions**, ending with a **CC Rnd 4, 6, 8 or 10**, and at least 0.14 ounces [4 grams] of **CC** remaining.

Cut your **MC**, leaving a 6 inch [15 cm] tail.

You will be working with **CC** for the rest of your Cowltopus.

Final Rnd 1: *K1, brp; rep from * around, removing all markers except the end of round marker.

Final Rnd 2: Purl around.

Final Rnd 3: Knit around.

Bind off knitwise with an Icelandic Bind Off. Cut yarn, leaving a 6 inch [15 cm] tail.

© Laura Nelkin 2024. No duplicating except for personal use.



VIDEO FOR CLUE 4:

www.nelkindesigns.com/cowltopus_Clue4

Clue 4 Abbreviations

- brRsl dec (right leaning Brioche decrease)- sl next st and its yo knitwise, k1, pass slipped st (and its yo over st just worked) over, return stitch back to left ndl, pass next st and its yo over st just transferred, move st back to right ndl
- br3st inc (increases 1 st to 3 sts)- (brk, yo, brk) into one st
- brk- brioche knit
- brp- brioche purl
- sl1yo- slip 1 yarnover

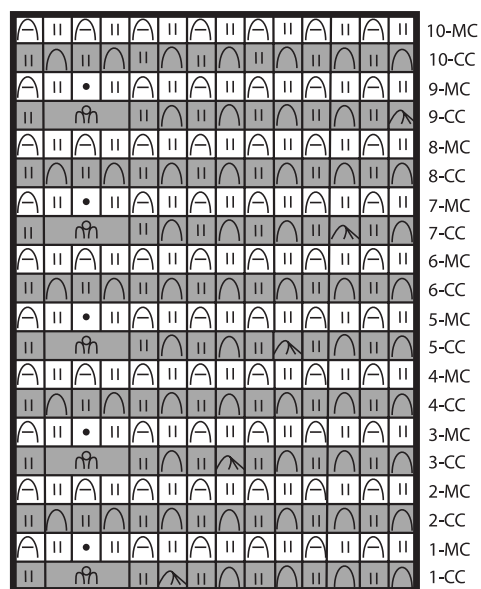


VIDEO FOR ICELANDIC BIND OFF:

www.nelkindesigns.com/IcelandicBindOff

CLUE 4 Complextopus (Brioche Style)

Clue 4 Chart [14 sts]



repeat chart 7 times around

Clue 4 Key

	knit
•	purl
	brRsl dec
	br3st inc
	sl1yo
	brk
	brp

Clue 4 Abbreviations

- brRsl dec (right leaning Brioche decrease)-
sl next st and its yo knitwise, k1, pass slipped
st (and its yo over st just worked) over, return
stitch back to left ndl, pass next st and its yo
over st just transferred, move st back to right ndl
- br3st inc (increases 1 st to 3 sts)- (brk, yo, brk)
into one st
- brk- brioche knit
- brp- brioche purl
- sl1yo- slip 1 yarnover

Clue 4 Written Instructions [14 sts]

Rnd 1-CC: With CC, *[brk, sl1yo] 4 times, brRsl dec, sl1yo, br3st inc, sl1yo; rep from * around.

Rnd 1-MC: With MC, *[sl1yo, brp] 5 times, sl1yo, p1, sl1yo, brp; rep from * around.

Rnd 2-CC: With CC, *brk, sl1yo; rep from * around.

Rnd 2-MC: With MC, *sl1yo, brp; rep from * around.

Rnd 3-CC: With CC, *[brk, sl1yo] 3 times, brRsl dec, sl1yo, brk, sl1yo, br3st inc, sl1yo; rep from * around.

Rnd 3-MC: Same as **Rnd 1-MC**.

Rnd 4-CC: Same as **Rnd 2-CC**.

Rnd 4-MC: Same as **Rnd 2-MC**.

Rnd 5-CC: With CC, *[brk, sl1yo] twice, brRsl dec, sl1yo, [brk, sl1yo] twice, br3st inc, sl1yo; rep from * around.

Rnd 5-MC: Same as **Rnd 1-MC**.

Rnd 6-CC: Same as **Rnd 2-CC**.

Rnd 6-MC: Same as **Rnd 2-MC**.

Rnd 7-CC: With CC, *brk, sl1yo, brRsl dec, sl1yo, [brk, sl1yo] three times, br3st inc, sl1yo; rep from * around.

Rnd 7-MC: Same as **Rnd 1-MC**.

Rnd 8-CC: Same as **Rnd 2-CC**.

Rnd 8-MC: Same as **Rnd 2-MC**.

Rnd 9-CC: With CC, *brRsl dec, sl1yo, [brk, sl1yo] 4 times, br3st inc, sl1yo; rep from * around.

Rnd 9-MC: Same as **Rnd 1-MC**.

Rnd 10-CC: Same as **Rnd 2-CC**.

Rnd 10-MC: Same as **Rnd 2-MC**.

CLUE 4 Con't Simplopus Octopus (Ribbing Style)

Con't working as for **Clue 3** (page 10), ending with a **Rnd 6** and at least 0.07 ounces [2 grams] of **CC** left.

Cut your **MC**, leaving a 6 inch [15 cm] tail.

Bind off with **CC**, and the modified version of Jeny's Surprisingly Stretchy Bind Off.

Cut yarn, leaving a 6 inch [15 cm] tail.



VIDEO FOR MODIFIED JENYS SSBO:

www.nelkindesigns.com/JenysSSBO

FINISHING

Weave in all ends and block. You can roll up a towel and place inside the hood to avoid a crease, or just lay flat to try and steam any crease out afterwards if there is one. I blocked mine this way and did not have to do any steaming!

When your fabric is dry, trim your ends.

Optional: Take the 12 inch [30 cm] length of **MC** that you set aside and single crochet a chain at the join of the hood and the neck to close up any gap from joining the hood into the round.

Thank you SO MUCH Cowltopussers!!! I so appreciate you trusting me to take you on this deep sea journey!!!

xoxoxo

MEET LAURA



Laura Nelkin is a prolific and innovative knitwear designer and pattern maker. She is known for her complex but accessible designs that challenge knitters to think about their stitches in a new way. Taking inspiration from her home in the gorges Fingerlakes Region of Upstate New York, Laura loves incorporating elements into her designs that reference the landscape around her.

Laura has an extensive line of self-published patterns, knitting clubs, kits, knit-a-longs, in person workshops and online classes through Craftsy and YouTube. Her patterns are challenging yet accessible thanks in large part to extensive video tutorials. Laura makes sure that no knitter is ever left behind!

CONNECT WITH ME!

Website: www.nelkindesigns.com

YouTube Channel: www.nelkindesigns.com/youtube

Ravelry: www.nelkindesigns.com/ravelry

Facebook: www.nelkindesigns.com/facebook

Instagram: www.nelkindesigns.com/instagram

Workshops: www.nelkindesigns.com/workshops

Kits: www.nelkindesigns.com/etsy

Blog: www.nelkindesigns.com/blog

Lola's Choice Kit Club: www.nelkindesigns.com/lola

The N Club: www.nelkindesigns.com/nclub

STAY IN THE LOOP... SIGN UP FOR MY MAILING LIST

www.nelkindesigns.com/maillinglist

LOOKING FOR A KIT?

www.nelkindesigns.com/etsy

HELPFUL TUTORIALS!!

www.nelkindesigns.com/tutorials

NEED HELP OR WANT TO SHARE YOUR KNITTING?

Check out my Ravelry group...

www.nelkindesigns.com/ravelry