

CORAL REEF HAT

by Lisa Hannes / maliha designs



This hat features a variation of the same eye-catching, travelling rib motif that I developed for my previous designs, the Coral Reef Wrap and Coral Reef Socks that can be found here:

<https://www.ravelry.com/patterns/library/coral-reef-wrap-2>

<https://www.ravelry.com/patterns/library/coral-reef-socks-3>

I'm also wearing my matching Coral Reef Scarf in the photos in this pattern; another new design that can be found here:

<https://www.ravelry.com/patterns/library/coral-reef-scarf-4>

MATERIALS

YARN: Designed for DK weight yarn.

Sample yarn: Sandnes Garn Double Sunday (DK weight, 100% Non Superwash Merino Wool, 50 g = 108 m / 118 yds),

- 2 complete balls (100 g = 216 m / 236 yds) used in colour 6707 Steel Grey (long grey version with taller brim),
- 1.81 balls (91 g = 195 m / 214 yds) used in colour 3552 Nougat (shorter brown version with shorter brim).

NEEDLES: 3.5 mm / US 4 needles for knitting in the round (samples were knitted using the magic-loop method on a 100 cm long cable), or size to obtain gauge.

OTHER: 1 BOR marker, 8 markers for stitch pattern, 3 markers for pattern repeats if desired, tapestry needle.

SIZE & GAUGE

SIZE: To fit approx. 52-58 cm / 20.5-22.75" head circumference with slight negative ease (due to the ribbing it's quite stretchy and will easily fit a wide range of sizes).

- Length with folded up brim is approx. 25 cm / 9.75" (grey version) or 22.5 cm / 8.75" (brown version), adjustable to 20 cm / 7.75" for a more fitted beanie version (not shown).
- Brim measures 10 cm / 4" (grey version) or 7.5 cm / 3" (brown version).

GAUGE: 28 sts x 32 rounds = 10 x 10 cm / 4 x 4" in 2/2 ribbing after washing and gentle blocking.

NOTES

The hat is worked bottom up (from brim to crown) in the round. The pattern contains fully written as well as charted instructions for the travelling rib motif so you can choose which you prefer to work from.

ABBREVIATIONS

BOR = beginning of round	front loop. (1 st increased)
DS = double stitch	m1Rp = "make 1 right purlwise", right leaning increase purlwise: Lift strand between the needles from back to front and purl into the front loop. (1 st increased)
k = knit	p = purl
k2tog = knit 2 sts together (1 st decreased)	pm1/pm2 = place marker 1/2
m1L = "make 1 left", left leaning increase: Lift strand between the needles from front to back and knit into the back loop. (1 st increased)	rep = repeat
m1Lp = "make 1 left purlwise", left leaning increase purlwise: Lift strand between the needles from front to back and purl into the back loop. (1 st increased)	rnd(s) = round(s)
m1R = "make 1 right", right leaning increase: Lift strand between the needles from back to front and knit into the	sm1/sm2 = slip marker 1/2
	ssk = slip slip knit: Slip next 2 sts knitwise, one at a time, then knit these 2 sts together
	tbl (1 st decreased)
	st(s) = stitch(es)
	tbl = through the back loop(s)

HOW TO MAKE THE HAT

Cast on 128 sts using long-tail cast-on or your preferred cast-on method.

Join to work in the round being careful not to twist, place marker for beginning of round (BOR).



FOLDED BRIM

Work the following Ribbing-Round eight times for the tall brim version (grey sample) or four times for the shorter brim version (brown sample).

For a more fitted beanie version (not shown) also work it four times.

Ribbing-Rnd: (K2, p2) rep to end.

Then work Rnds 1-16 from the chart or written instructions for the **TRAVELLING RIB MOTIF A** on pg. 4 once.

After that, repeat the Ribbing-Rnd eight times for the tall brim version (grey sample) or four times for the shorter brim version (brown sample).

For a more fitted beanie version (not shown) also work it four times.

Now it's time to create a folding line for the brim so it folds up neatly. Work as follows:

- Turn work inside out. Your previous wrong side now becomes your right side and you're working in the opposite direction.
- Slip first st and make DS like doing for German Short-Rows, as shown here: <https://www.youtube.com/watch?v=XKDGqfuWVM8>
- Then knit all sts to BOR. This row creates a ridge for the folding line.

Continue with the instructions for the body on the next page.

BODY

You'll now work in the round again, but continue to work in the opposite direction because you turned your work inside out.

Note: From now on, the ribbing will be offset to the ribbing you worked for the brim, but it will sit correctly on top of each other once the brim is folded up.

Remove BOR marker.

Start by working the first st as a "purl 2 together" to resolve the DS and close the gap, then p1 the next st and place new BOR marker.

Then work the Ribbing-Rnd thirty-two times for the long version (grey sample) or twenty-eight times for the shorter version (brown sample).

For a more fitted beanie version (not shown), work this round only twenty-four times.

Ribbing-Rnd: (K2, p2) rep to end.

Now, work Rnds 1-16 from the chart or written instructions for the **TRAVELLING RIB MOTIF B** on pg. 5 once.

Note: This motif may look offset by half a repeat now, but it will sit correctly to match the motif on the brim once the brim is folded up (see photo on pg. 5).

After that, repeat the Ribbing-Rnd eight times for the long version (grey sample) or four times for the shorter version (brown sample).

Alternatively, you could also work your own variation according to your preferences here. E.g. Work a shorter ribbed part here in combination with the taller brim or a longer ribbed part with the shorter brim. So basically, work as many rnds in ribbing as you like for this part before starting the crown decreases.

For a more fitted beanie version (not shown), skip this part and move right on to the crown decreases.

CROWN

Work Rnds 1-22 from the chart or written instructions for the **CROWN SHAPING** on pg. 6 once. You'll end with 8 sts.

Thread yarn end into a tapestry needle and then through those last 8 sts. Pull tight to close the crown. Bring yarn end to the inside of the hat.

Sew in your yarn ends. (Bonus tip: If you sew them in neatly, you can also wear this hat inside out since the stitch pattern looks beautiful on both sides!)

Wash & block your finished item to even out the sts.

Enjoy your new hat!



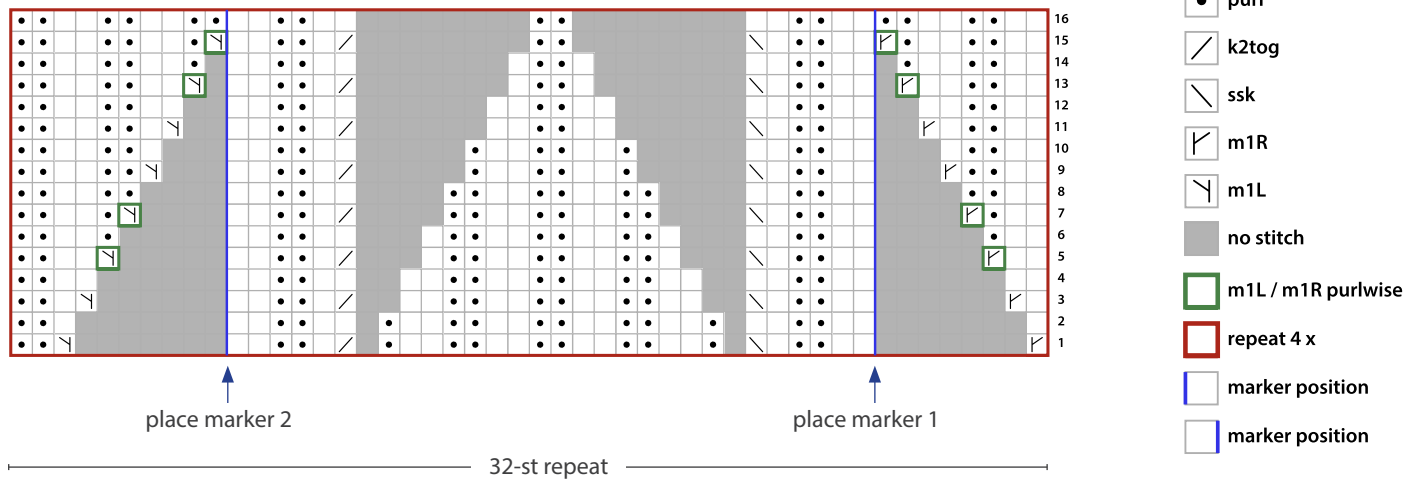
Hat is modelled on a 54 cm / 21.25" head circumference.

TRAVELLING RIB MOTIF A (FOR BRIM)

I suggest placing markers as indicated since I find this makes it much easier to remember where to make the increases. You will only need the markers on the odd-numbered rnds. On all even-numbered rnds, just slip the markers as you come to them. You may wish to use additional markers for the pattern repeats, however these are not specifically mentioned in the instructions. Please remove all your markers after finishing this motif.

CHART:

The chart is worked in the round. Read all rounds from right to left.



WRITTEN INSTRUCTIONS:

Rnd 1: [M1R, **pm1**, k2, p2, k1, ssk, p1, (k2, p2) × 3, k2, p1, k2tog, k1, p2, k2, **pm2**, m1L, p2] × 4.

Rnd 2: [K3, p2, k2, p1, (k2, p2) × 3, k2, p1, k2, p2, k3, p2] × 4.

Rnd 3: [K1, m1R, **sm1**, k2, p2, k1, ssk, (k2, p2) × 3, k2, k2tog, k1, p2, k2, **sm2**, m1L, k1, p2] × 4.

Rnd 4: [(K4, p2) × 2, (k2, p2) × 2, (k4, p2) × 2] × 4.

Rnd 5: [K2, m1Rp, **sm1**, k2, p2, k1, ssk, k1, (p2, k2) × 2, p2, k1, k2tog, k1, p2, k2, **sm2**, m1Lp, k2, p2] × 4.

Rnd 6: [K2, p1, k2, p2, k3, (p2, k2) × 2, p2, k3, p2, k2, p1, k2, p2] × 4.

Rnd 7: [K2, p1, m1Rp, **sm1**, k2, p2, k1, ssk, (p2, k2) × 2, p2, k2tog, k1, p2, k2, **sm2**, m1Lp, p1, k2, p2] × 4.

Rnd 8: (K2, p2) rep to end.

Rnd 9: (K2, p2, m1R, **sm1**, k2, p2, k1, ssk, p1, k2, p2, k2, p1, k2tog, k1, p2, k2, **sm2**, m1L, p2, k2, p2) × 4.

Rnd 10: [K2, p2, k3, (p2, k2, p1, k2) × 2, p2, k3, p2, k2, p2] × 4.

Rnd 11: (K2, p2, k1, m1R, **sm1**, k2, p2, k1, ssk, k2, p2, k2, k2tog, k1, p2, k2, **sm2**, m1L, k1, p2, k2, p2) × 4.

Rnd 12: [K2, (p2, k4) × 4, p2, k2, p2] × 4.

Rnd 13: [K2, p2, k2, m1Rp, **sm1**, k2, p2, k1, ssk, k1, p2, k1, k2tog, k1, p2, k2, **sm2**, m1Lp, (k2, p2) × 2] × 4.

Rnd 14: [K2, p2, k2, p1, k2, (p2, k3) × 2, p2, k2, p1, (k2, p2) × 2] × 4.

Rnd 15: [K2, p2, k2, p1, m1Rp, **sm1**, k2, p2, k1, ssk, p2, k2tog, k1, p2, k2, **sm2**, m1Lp, p1, (k2, p2) × 2] × 4.

Rnd 16: (K2, p2) rep to end.

TRAVELLING RIB MOTIF B (FOR BODY)

I suggest placing markers as indicated since I find this makes it much easier to remember where to make the increases. You will only need the markers on the odd-numbered rnds. On all even-numbered rnds, just slip the markers as you come to them. You may wish to use additional markers for the pattern repeats, however these are not specifically mentioned in the instructions. Please remove all your markers after finishing this motif.

CHART:

The chart is worked in the round. Read all rounds from right to left.



KEY:

- knit
- purl
- k2tog
- ssk
- m1R
- m1L
- no stitch
- m1L / m1R purlwise
- repeat 4 x
- marker position
- marker position

WRITTEN INSTRUCTIONS:

Rnd 1: [K2, p2, k2, p1, k2tog, k1, p2, k2, **pm1**, m1L, p2, m1R, **pm2**, k2, p2, k1, ssk, p1, (k2, p2) × 2] × 4.

Rnd 2: [K2, p2, k2, p1, k2, (p2, k3) × 2, p2, k2, p1, (k2, p2) × 2] × 4.

Rnd 3: [K2, p2, k2, k2tog, k1, p2, k2, **sm1**, m1L, k1, p2, k1, m1R, **sm2**, k2, p2, k1, ssk, (k2, p2) × 2] × 4.

Rnd 4: [K2, (p2, k4) × 4, p2, k2, p2] × 4.

Rnd 5: (K2, p2, k1, k2tog, k1, p2, k2, **sm1**, m1Lp, k2, p2, k2, m1Rp, **sm2**, k2, p2, k1, ssk, k1, p2, k2, p2) × 4.

Rnd 6: [K2, p2, k3, (p2, k2, p1, k2) × 2, p2, k3, p2, k2, p2] × 4.

Rnd 7: (K2, p2, k2tog, k1, p2, k2, **sm1**, m1Lp, p1, k2, p2, k2, p1, m1Rp, **sm2**, k2, p2, k1, ssk, p2, k2, p2) × 4.

Rnd 8: (K2, p2) rep to end.

Rnd 9: [K2, p1, k2tog, k1, p2, k2, **sm1**, m1L, (p2, k2) × 2, p2, m1R, **sm2**, k2, p2, k1, ssk, p1, k2, p2] × 4.

Rnd 10: [K2, p1, k2, p2, k3, (p2, k2) × 2, p2, k3, p2, k2, p1, k2, p2] × 4.

Rnd 11: [K2, k2tog, k1, p2, k2, **sm1**, m1L, k1, (p2, k2) × 2, p2, k1, m1R, **sm2**, k2, p2, k1, ssk, k2, p2] × 4.

Rnd 12: [(K4, p2) × 2, (k2, p2) × 2, (k4, p2) × 2] × 4.

Rnd 13: [K1, k2tog, k1, p2, k2, **sm1**, m1Lp, (k2, p2) × 3, k2, m1Rp, **sm2**, k2, p2, k1, ssk, k1, p2] × 4.

Rnd 14: [K3, p2, k2, p1, (k2, p2) × 3, k2, p1, k2, p2, k3, p2] × 4.

Rnd 15: [K2tog, k1, p2, k2, **sm1**, m1Lp, p1, (k2, p2) × 3, k2, p1, m1Rp, **sm2**, k2, p2, k1, ssk, p2] × 4.

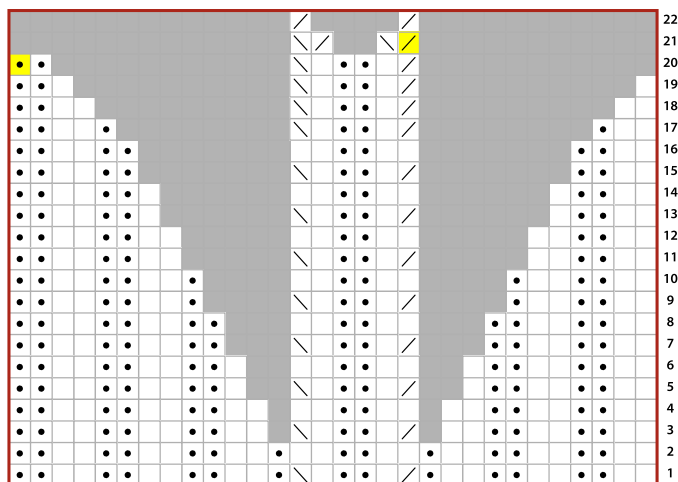
Rnd 16: (K2, p2) rep to end.



CROWN SHAPING

CHART:

The chart is worked in the round. Read all rounds from right to left.



KEY:

- knit
- purl
- k2tog
- ssk
- no stitch
- repeat 4 x
- On the last rep at the end of Rnd 20, don't work the last purl st, but work these 2 sts tog (see Rnd 20 of written instructions).

WRITTEN INSTRUCTIONS:

Rnd 1: [(K2, p2) × 2, k2, p1, k2tog, k1, p2, k1, ssk, p1, (k2, p2) × 3] × 4. (120 sts)

Rnd 2: [K2, p2, (k2, p2, k2, p1) × 2, (k2, p2) × 3] × 4.

Rnd 3: [(K2, p2) × 2, k2, k2tog, k1, p2, k1, ssk, (k2, p2) × 3] × 4. (112 sts)

Rnd 4: [(K2, p2) × 2, (k4, p2) × 2, (k2, p2) × 2] × 4.

Rnd 5: [(K2, p2) × 2, k1, k2tog, k1, p2, k1, ssk, k1, (p2, k2) × 2, p2] × 4. (104 sts)

Rnd 6: [(K2, p2) × 2, (k3, p2) × 2, (k2, p2) × 2] × 4.

Rnd 7: [(K2, p2) × 2, k2tog, k1, p2, k1, ssk, (p2, k2) × 2, p2] × 4. (96 sts)

Rnd 8: (K2, p2) rep to end.

Rnd 9: [K2, p2, k2, p1, k2tog, k1, p2, k1, ssk, p1, (k2, p2) × 2] × 4. (88 sts)

Rnd 10: [(K2, p2, k2, p1) × 2, (k2, p2) × 2] × 4.

Rnd 11: [K2, p2, k2, k2tog, k1, p2, k1, ssk, (k2, p2) × 2] × 4. (80 sts)

Rnd 12: [K2, (p2, k4) × 2, p2, k2, p2] × 4.

Rnd 13: (K2, p2, k1, k2tog, k1, p2, k1, ssk, k1, p2, k2, p2) × 4. (72 sts)

Rnd 14: [K2, (p2, k3) × 2, p2, k2, p2] × 4.

Rnd 15: [K2, p2, k2tog, k1, p2, k1, ssk, p2, k2, p2] × 4. (64 sts)

Rnd 16: (K2, p2) rep to end.

Rnd 17: (K2, p1, k2tog, k1, p2, k1, ssk, p1, k2, p2) × 4. (56 sts)

Rnd 18: (K2, k2tog, k1, p2, k1, ssk, k2, p2) × 4. (48 sts)

Rnd 19: (K1, k2tog, k1, p2, k1, ssk, k1, p2) × 4. (40 sts)

Rnd 20: (K2tog, k1, p2, k1, ssk, p2) × 3, k2tog, k1, p2, k1, ssk, p1, don't work the last purl st of this rnd, you'll use it for the k2tog at the beginning of Rnd 21. Slip this purl st to right hand needle, remove BOR, slip it back to left hand needle, place BOR. (32 sts)

Rnd 21: (K2tog, ssk) rep to end. (16 sts)

Rnd 22: K2tog × 8. (8 sts)

