



KNITTING PATTERN

# Cinnamon Spice

## Socks

**Design: Annelise Driscoll Gingrow - Grey Cap Knits | Hobbii Design**



## MATERIALS

### Friends Sock Wool

**MC** = 1 (1, 1, 1) skein of color 09

**CC1** = 1 (1, 1, 1) skein of color 12

**CC2** = 1 (1, 1, 1) skein of color 20

4 DPNs US 1 (2.25 mm)

### OR

Circular needles US 1 (2.25 mm) 9" (23 cm)

2 stitch markers (if using circular needles)

1 stitch holder

Tapestry needle

Scissors

## YARN QUALITY

 **Friends Sock Wool**, Hobbii

75% Wool, 25% Polyamide

50 g / 1.75 oz = 210 m / 229 yds

## GAUGE

36 sts x 42 rounds = 4" x 4" (10 cm x 10 cm)  
in colorwork

## SIZE

S (M, L, XL)

## MEASUREMENTS

Foot Circumference: 7 (8, 9, 10) inches / 18  
(20.5, 23, 25.5) cm

## PATTERN INFORMATION

These toasty socks are a delightfully sweet addition to any winter wardrobe. Inspired by spiced tea and the smell of baking during the holiday season, they feature warm, neutral colors and a fun filigree design. These mid-length socks are worked cuff-down with a heel flap and gusset, and are grafted at the toe with kitchener stitch. They feature a reinforced heel and toe, a half-twisted rib cuff, and stranded colorwork that wraps around the leg and foot like steam rising from a warm cup of tea!

## TECHNIQUES

[Long-Tail Cast-On 1x1 Rib](#)

[Kitchener Stitch](#)

## HASHTAGS FOR SOCIAL MEDIA

#hobbiidesign #hobbiicinnamonspace

#hobbiiawinterstale #greycapknits

## BUY THE YARN HERE

<https://shop.hobbii.com/cinnamon-spice-socks>

## QUESTIONS

If you have any questions regarding this pattern, please feel free to email us at [support@hobbii.com](mailto:support@hobbii.com). Please make sure to include the pattern's name and number.

Happy Crafting!

# Pattern



## ABBREVIATIONS

[ ] = work as many times as directed

**DPN** = double pointed needle

**K** = knit

**K2tog** = knit 2 together

**P** = purl

**P2tog** = purl 2 together

**Rnd** = round

**RS** = right side

**SH** = stitch holder

**SSK** = slip 2 sts knitwise, K2tog tbl

**SL** = slip (purlwise unless otherwise stated)

**SM** = stitch marker

**St(s)** = stitch(es)

**TBL** = through back loop

**WS** = wrong side

**WYIB** = with yarn in back

**WYIF** = with yarn in front

## INFO AND TIPS

- If you are using 4 DPNs, you will not need SMs. The space between your needles will serve as your SMs. The heel will be worked on one needle (between SM1 and SM2) with resting sts on needle 3, and the gusset and foot (between SM1 and SM2) can be divided evenly across two needles with all remaining sts on needle 3.
- If you are using circular needles, you will need 2 SMs.
- CC1 should be held dominant for all colorwork.
- Floats should be trapped at least every 7 sts.

## CUFF

**Set-Up:** Using long-tail 1x1 rib method and CC2, CO 64 (72, 80, 88).

**Rnd 1:** Join round and place SM1. [K1 tbl, P1] to end of rnd.

**Rnd 2:** [K1 tbl, P1] to end of rnd.

Rep [Rnd 2] until cuff measures approx. 1" (2.5 cm). Break CC2.



## LEG

Colorwork charts are shown at the end of the pattern. All charts should be worked bottom-up from right to left. Each chart corresponds with a specific sock size. Written instructions for each individual chart are included below the chart. Be sure that you are working the correct chart for your size. For each size, the chart row should be repeated 4 times per round. CC1 should be held dominant.

**Rnd 1:** Attach MC, work rnd 1 of the colorwork chart that corresponds with your size.

Continue in colorwork pattern until all chart rows have been worked.

Rep all chart rows once more.

Rep [Rnd 1] of chart once more.

Leave MC and CC1 attached.

## HEEL FLAP

The reinforced heel flap is worked flat by alternating two strands of CC2, one pulled from the center of the ball and one from the outside of the ball.

**Row 1 (RS):** Attach 2 strands of CC2. K1 using both strands held together, [K1 with first strand, K1 with second strand] 15 (17, 19, 21) times, K1 using both strands held together. Place SM2. You should now have a total of 32 (36, 40, 44) sts between SM1 and SM2 (or on your first needle, if using DPNs).

**Row 2 (WS):** Sl1 wyif, [P1 with first strand, P1 with second strand] 15 (17, 19, 21) times, P1 using both strands held together.

**Row 3 (RS):** Sl1 wyib, [K1 with first strand, K1 with second strand] 15 (17, 19, 21) times, K1 using both strands held together.

**Row 4:** As Row 2.

Rep [Row 3 - Row 4] 6 (7, 8, 9) more times. You should now have a total of 8 (9, 10, 11) slipped sts along each side of heel flap.

## GUSSET

The gusset is worked by alternating 2 strands of CC2. The last st of each row is worked holding 2 strands together.

**Row 1:** Sl1 wyib, K 17 (19, 21, 23) using alternating strands of CC2, SSK, K1 using both strands held together. Turn your work.

**Row 2:** Sl1 wyif, P5 using alternating strands of CC2, P2tog, P1 using both strands held together. Turn your work.

**Row 3:** Sl1 wyib, K6 using alternating strands of CC2, SSK, K1 using both strands held together. Turn your work.

**Row 4:** Sl1 wyif, P7 using alternating strands of CC2, P2tog, P1 using both strands held together. Turn your work.

Continue in established pattern until 20 (22, 24, 26) sts remain.

**Row 5:** Sl1 wyib, K to last 2 sts using alternating strands of CC2, SSK using both strands held together. Turn your work.



**Row 6:** Sl1 wyif, P to last 2 sts using alternating strands of CC2, P2tog using both strands held together. Turn your work. You should now have 18 (20, 22, 24) sts remaining. Break CC2.

From this point, you will continue working the gusset decrease in the round.

**Set-Up:** Beginning from where MC and CC1 are still attached, place SM1. This will mark the beginning of your round. Pick up but do not knit 16 (18, 20, 22) sts along the edge of the heel flap (hint: pick up 2 strands from each slipped stitch), the 18 (20, 22, 24) live heel sts, 16 (18, 20, 22) sts along the edge of the heel flap (hint: pick up 2 strands from each slipped stitch), place SM2, and pick up but do not knit the 32 (36, 40, 44) sts that were set aside before heel flap. You should now have a total of 82 (92, 102, 112) sts in your round.

**Rnd 1:** [K1 in MC, K1 in CC1] to SM2, work chart row 2 to end of rnd.

**Rnd 2:** [K1 in CC1, K1 in MC] to SM2, work next chart row to end of rnd.

**Rnd 3:** K1 in CC1, SSK in MC, [K1 in CC1, K1 in MC] to 3 before SM2, K2tog in CC1, K1 in MC, work next chart row to end of rnd.

**Rnd 4:** [K1 in MC, K1 in CC1] to SM2, work next chart row to end of rnd.

**Rnd 5:** K1 in MC, SSK in CC1, [K1 in MC, K1 in CC1] to 3 before SM2, K2tog in MC, K1 in CC1, work next chart row to end of rnd.

Rep [Rnd 2 - Rnd 5] until you have a total of 64 (72, 80, 88) sts remaining in rnd.

## FOOT

Without decreasing, continue in established pattern (working in alternating MC, CC1 pattern to SM2 and next chart row to end of rnd) until foot measures approx. 2 (2.25, 2.5, 2.75) inches / 5 (6, 6.5, 7) cm short of desired length. Break MC and CC1.

## TOE

The toe is worked by alternating 2 strands of CC2, one pulled from the center of the ball and one from the outside of the ball.

**Rnd 1:** Attach 2 strands of CC2. [K1 with first strand of CC2, K1 with second strand of CC2] to end of rnd.

**Rnd 2:** Alternating strands of CC2, K1, SSK, K to last 3 sts before SM2, K2tog, K1, K1, SSK, K to last 3 sts of rnd, K2tog, K1.

**Rnd 3:** Alternating strands of CC2, K to end of rnd.

Rep [Rnd 2 - Rnd 3] until 28 (32, 36, 40) sts remain.

Rep [Rnd 2] 1 more time. You should now have 24 (28, 32, 36) sts in rnd.

Using kitchener stitch and one strand of CC2, graft the toe stitches closed.

Repeat same process for second sock.

## FINISHING

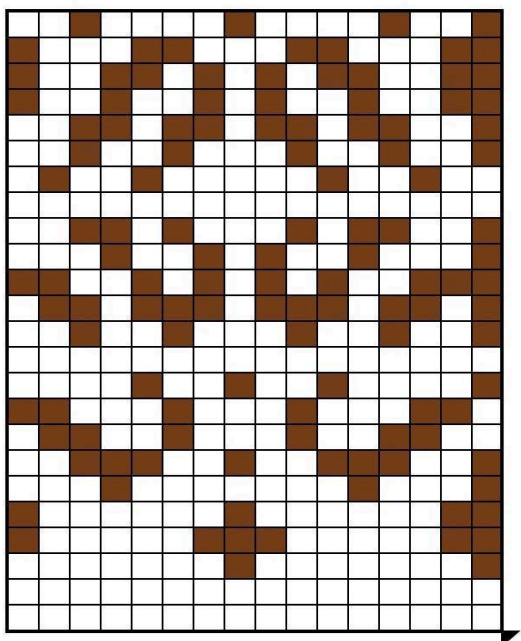
Weave in all ends and wet-block socks.

## COLORWORK CHARTS

Charts should be worked from right to left, bottom up. Be sure you are working the correct chart for your selected size. White squares represent a knit stitch in MC, brown squares represent a knit stitch in CC1. CC1 should be held dominant.



### Size Small (64 sts in rnd)



**Rnd 1:** Using MC, K to end of rnd.

**Rnd 2:** As rnd 1.

**Rnd 3:** [K1 in CC1, K7 in MC] to end of rnd.

**Rnd 4:** [K2 in CC1, K5 in MC, K1 in CC1] to end of rnd.

**Rnd 5:** [K2 in CC1, K6 in MC, K1 in CC1, K6 in MC, K1 in CC1] to end of rnd.

**Rnd 6:** [K1 in CC1, K3 in MC, K1 in CC1, K7 in MC, K1 in CC1, K3 in MC] to end of rnd.

**Rnd 7:** [K1 in CC1, K2 in MC, K3 in CC1, K2 in MC] to end of rnd.

**Rnd 8:** [K2 in MC, K2 in CC1, K2 in MC, K1 in CC1, K3 in MC, K1 in CC1, K2 in MC, K2 in CC1, K1 in MC] to end of rnd.

**Rnd 9:** [K1 in MC, K2 in CC1, K3 in MC, K1 in CC1, K3 in MC, K1 in CC1, K3 in MC, K2 in CC1] to end of rnd.

**Rnd 10:** [K1 in CC1, K4 in MC, K1 in CC1, K2 in MC, K1 in CC1, K2 in MC, K1 in CC1, K4 in MC] to end of rnd.

**Rnd 11:** As rnd 1.

**Rnd 12:** [K1 in CC1, K2 in MC, K1 in CC1, K2 in MC, K1 in CC1, K3 in MC, K1 in CC1, K2 in MC, K1 in CC1, K2 in MC] to end of rnd.

**Rnd 13:** [K1 in CC1, K1 in MC, K2 in CC1, K1 in MC, K3 in CC1, K1 in MC, K3 in CC1, K1 in MC, K2 in CC1, K1 in MC] to end of rnd.

**Rnd 14:** [K3 in CC1, K2 in MC, K1 in CC1, K1 in MC, K1 in CC1, K1 in MC, K1 in CC1, K1 in MC, K1 in CC1, K2 in MC, K2 in CC1] to end of rnd.

**Rnd 15:** [K1 in CC1, K3 in MC, K1 in CC1, K2 in MC, K1 in CC1, K1 in MC, K1 in CC1, K2 in MC, K1 in CC1, K3 in MC] to end of rnd.

**Rnd 16:** [K1 in CC1, K2 in MC, K2 in CC1, K1 in MC, K1 in CC1, K3 in MC, K1 in CC1, K1 in MC, K2 in CC1, K2 in MC] to end of rnd.

**Rnd 17:** As rnd 1.

**Rnd 18:** [K2 in MC, K1 in CC1, K2 in MC, K1 in CC1, K5 in MC, K1 in CC1, K2 in MC, K1 in CC1, K1 in MC] to end of rnd.

**Rnd 19:** [K1 in CC1, K2 in MC, K1 in CC1, K2 in MC, K1 in CC1, K3 in MC, K1 in CC1, K2 in MC, K1 in CC1, K2 in MC] to end of rnd.

**Rnd 20:** [K1 in CC1, K2 in MC, K2 in CC1, K1 in MC, K2 in CC1, K1 in MC, K2 in CC1, K1 in MC, K2 in CC1, K2 in MC] to end of rnd.

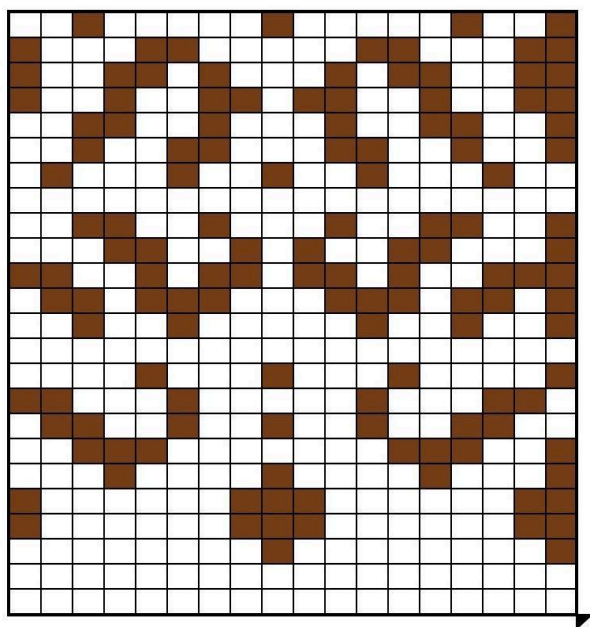
**Rnd 21:** [K2 in CC1, K2 in MC, K1 in CC1, K2 in MC, K1 in CC1, K1 in MC, K1 in CC1, K2 in MC, K1 in CC1, K2 in MC, K1 in CC1] to end of rnd.

**Rnd 22:** [K2 in CC1, K2 in MC, K2 in CC1, K1 in MC, K1 in CC1, K1 in MC, K1 in CC1, K1 in MC, K2 in CC1, K2 in MC, K1 in CC1] to end of rnd.

**Rnd 23:** [K2 in CC1, K3 in MC, K2 in CC1, K3 in MC, K2 in CC1, K3 in MC, K1 in CC1] to end of rnd.

**Rnd 24:** [K1 in CC1, K2 in MC, K1 in CC1, K4 in MC, K1 in CC1, K4 in MC, K1 in CC1, K2 in MC] to end of rnd.

### Size Medium (72 sts in rnd)



**Rnd 1:** Using MC, K to end of rnd.

**Rnd 2:** As rnd 1.

**Rnd 3:** [K1 in CC1, K8 in MC] to end of rnd.

**Rnd 4:** [K2 in CC1, K6 in MC, K1 in CC1] to end of rnd.

**Rnd 5:** As Rnd 4.

**Rnd 6:** [K1 in CC1, K3 in MC, K1 in CC1, K4 in MC, K1 in CC1, K4 in MC, K1 in CC1, K3 in MC] to end of rnd.

**Rnd 7:** [K1 in CC1, K2 in MC, K3 in CC1, K7 in MC, K3 in CC1, K2 in MC] to end of rnd.

**Rnd 8:** [K2 in MC, K2 in CC1, K2 in MC, K1 in CC1, K2 in MC, K1 in CC1, K2 in MC, K1 in CC1, K2 in MC, K2 in CC1, K1 in MC] to end of rnd.

**Rnd 9:** [K1 in MC, K2 in CC1, K3 in MC, K1 in CC1, K5 in MC, K1 in CC1, K3 in MC, K2 in CC1] to end of rnd.

**Rnd 10:** [K1 in CC1, K4 in MC, K1 in CC1, K3 in MC, K1 in CC1, K3 in MC, K1 in CC1, K4 in MC] to end of rnd.

**Rnd 11:** As rnd 1.

**Rnd 12:** [K1 in CC1, K2 in MC, K1 in CC1, K2 in MC, K1 in CC1, K5 in MC, K1 in CC1, K2 in MC, K1 in CC1, K2 in MC] to end of rnd.

**Rnd 13:** [K1 in CC1, K1 in MC, K2 in CC1, K1 in MC, K3 in CC1, K3 in MC, K3 in CC1, K1 in MC, K2 in CC1, K1 in MC] to end of rnd.

**Rnd 14:** [K3 in CC1, K2 in MC, K1 in CC1, K1 in MC, K2 in CC1, K1 in MC, K2 in CC1, K1 in MC, K1 in CC1, K2 in MC, K2 in CC1] to end of rnd.

**Rnd 15:** [K1 in CC1, K3 in MC, K2 in CC1, K2 in MC, K1 in CC1, K1 in MC, K1 in CC1, K2 in MC, K2 in CC1, K3 in MC] to end of rnd.

**Rnd 16:** [K1 in CC1, K2 in MC, K2 in CC1, K2 in MC, K1 in CC1, K3 in MC, K1 in CC1, K2 in MC, K2 in CC1, K2 in MC] to end of rnd.

**Rnd 17:** As rnd 1.

**Rnd 18:** [K2 in MC, K1 in CC1, K3 in MC, K1 in CC1, K2 in MC, K1 in CC1, K2 in MC, K1 in CC1, K3 in MC, K1 in CC1, K1 in MC] to end of rnd.

**Rnd 19:** [K1 in CC1, K2 in MC, K1 in CC1, K2 in MC, K2 in CC1, K3 in MC, K2 in CC1, K2 in MC, K1 in CC1, K2 in MC] to end of rnd.

**Rnd 20:** [K1 in CC1, K2 in MC, K2 in CC1, K2 in MC, K1 in CC1, K3 in MC, K1 in CC1, K2 in MC, K2 in CC1, K2 in MC] to end of rnd.

**Rnd 21:** [K2 in CC1, K2 in MC, K1 in CC1, K2 in MC, K2 in CC1, K1 in MC, K2 in CC1, K2 in MC, K1 in CC1, K2 in MC, K1 in CC1] to end of rnd.

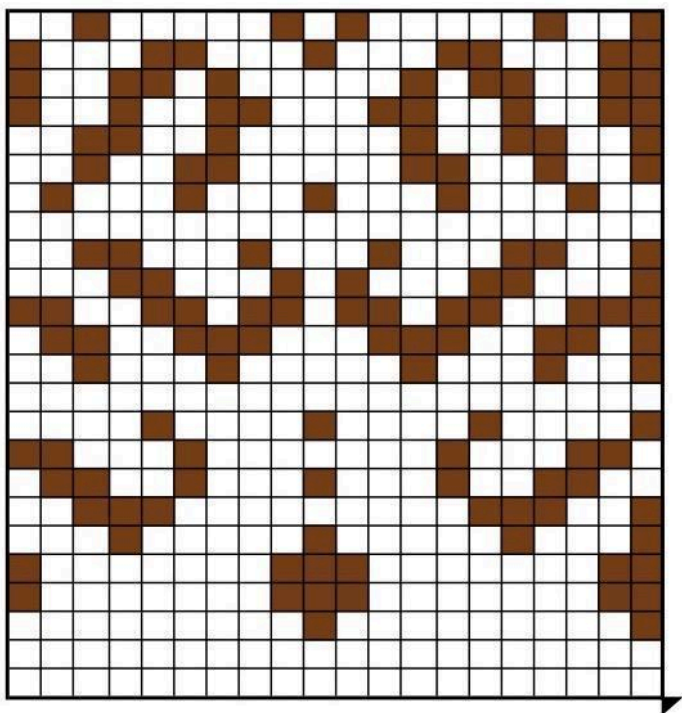
**Rnd 22:** [K2 in CC1, K2 in MC, K2 in CC1, K1 in MC, K1 in CC1, K3 in MC, K1 in CC1, K1 in MC, K2 in CC1, K2 in MC, K1 in CC1] to end of rnd.

**Rnd 23:** [K2 in CC1, K3 in MC, K2 in CC1, K5 in MC, K2 in CC1, K3 in MC, K1 in CC1] to end of rnd.

**Rnd 24:** [K1 in CC1, K2 in MC, K1 in CC1, K5 in MC, K1 in CC1, K5 in MC, K1 in CC1, K2 in MC] to end of rnd.



## Size Large (80 sts in rnd)



**Rnd 1:** Using MC, K to end of rnd.

**Rnd 2:** As rnd 1.

**Rnd 3:** [K1 in CC1, K9 in MC] to end of rnd.

**Rnd 4:** [K2 in CC1, K7 in MC, K1 in CC1] to end of rnd.

**Rnd 5:** As rnd 4.

**Rnd 6:** [K1 in CC1, K3 in MC, K1 in CC1, K5 in MC, K1 in CC1, K5 in MC, K1 in CC1, K3 in MC] to end of rnd.

**Rnd 7:** [K1 in CC1, K2 in MC, K3 in CC1, K9 in MC, K3 in CC1, K2 in MC] to end of rnd.

**Rnd 8:** [K2 in MC, K2 in CC1, K2 in MC, K1 in CC1, K3 in MC, K1 in CC1, K3 in MC, K1 in CC1, K2 in MC, K2 in CC1, K1 in MC] to end of rnd.

**Rnd 9:** [K1 in MC, K2 in CC1, K3 in MC, K1 in CC1, K7 in MC, K1 in CC1, K3 in MC, K2 in CC1] to end of rnd.

**Rnd 10:** [K1 in CC1, K4 in MC] to end of rnd.

**Rnd 11:** As rnd 1.

**Rnd 12:** [K1 in CC1, K2 in MC, K1 in CC1, K3 in MC, K1 in CC1, K5 in MC, K1 in CC1, K3 in MC, K1 in CC1, K2 in MC] to end of rnd.

**Rnd 13:** [K1 in CC1, K1 in MC, K2 in CC1, K2 in MC, K3 in CC1, K3 in MC, K3 in CC1, K2 in MC, K2 in CC1, K1 in MC] to end of rnd.

**Rnd 14:** [K3 in CC1, K2 in MC, K2 in CC1, K1 in MC, K2 in CC1, K1 in MC, K2 in CC1, K1 in MC, K2 in CC1, K2 in MC, K2 in CC1] to end of rnd.

**Rnd 15:** [K1 in CC1, K3 in MC, K2 in CC1, K3 in MC, K1 in CC1, K1 in MC, K1 in CC1, K3 in MC, K2 in CC1, K3 in MC] to end of rnd.

**Rnd 16:** [K1 in CC1, K2 in MC, K2 in CC1, K3 in MC, K1 in CC1, K3 in MC, K1 in CC1, K3 in MC, K2 in CC1, K1 in MC] to end of rnd.

**Rnd 17:** As rnd 1.

**Rnd 18:** [K2 in MC, K1 in CC1, K3 in MC, K1 in CC1, K3 in MC, K1 in CC1, K3 in MC, K1 in CC1, K3 in MC, K1 in CC1, K1 in MC] to end of rnd.

**Rnd 19:** [K1 in CC1, K2 in MC, K1 in CC1, K2 in MC, K2 in CC1, K5 in MC, K2 in CC1, K2 in MC, K1 in CC1, K2 in MC] to end of rnd.

**Rnd 20:** [K1 in CC1, K2 in MC, K2 in CC1, K2 in MC, K1 in CC1, K5 in MC, K1 in CC1, K2 in MC, K2 in CC1, K2 in MC] to end of rnd.

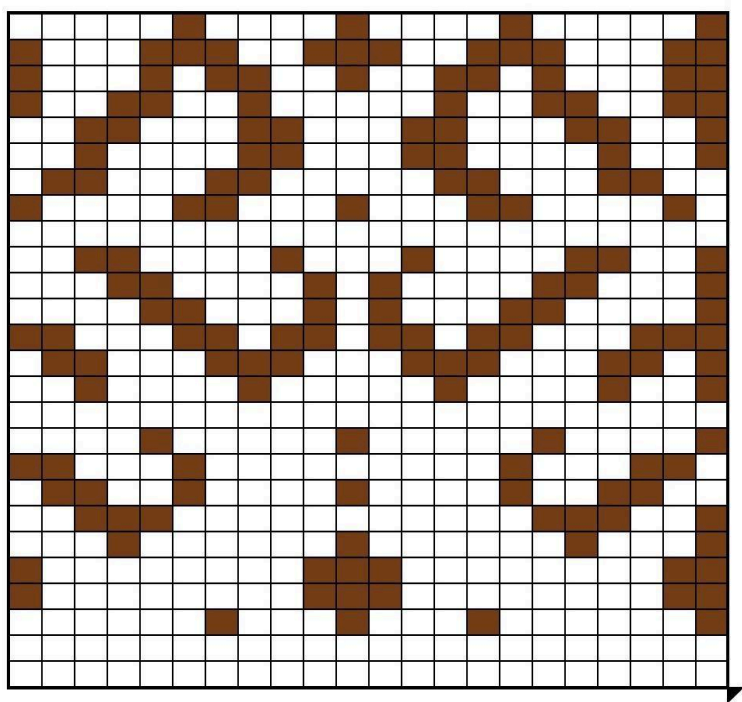
**Rnd 21:** [K2 in CC1, K2 in MC, K1 in CC1, K2 in MC, K2 in CC1, K3 in MC, K2 in CC1, K2 in MC, K1 in CC1, K2 in MC, K1 in CC1] to end of rnd.

**Rnd 22:** [K2 in CC1, K2 in MC, K2 in CC1, K1 in MC, K1 in CC1, K5 in MC, K1 in CC1, K1 in MC, K2 in CC1, K2 in MC, K1 in CC1] to end of rnd.

**Rnd 23:** [K2 in CC1, K3 in MC, K2 in CC1, K3 in MC, K1 in CC1, K3 in MC, K2 in CC1, K3 in MC, K1 in CC1] to end of rnd.

**Rnd 24:** [K1 in CC1, K2 in MC, K1 in CC1, K5 in MC, K1 in CC1, K1 in MC, K1 in CC1, K5 in MC, K1 in CC1, K2 in MC] to end of rnd.

### Size Extra Large (88 sts in rnd)



**Rnd 1:** Using MC, K to end of rnd.

**Rnd 2:** As rnd 1.

**Rnd 3:** [K1 in CC1, K6 in MC, K1 in CC1, K3 in MC, K1 in CC1, K3 in MC, K1 in CC1, K6 in MC] to end of rnd.

**Rnd 4:** [K2 in CC1, K8 in MC, K3 in CC1, K8 in MC, K1 in CC1] to end of rnd.

**Rnd 5:** As rnd 4.

**Rnd 6:** [K1 in CC1, K3 in MC, K1 in CC1, K6 in MC, K1 in CC1, K6 in MC, K1 in CC1, K3 in MC] to end of rnd.

**Rnd 7:** [K1 in CC1, K2 in MC, K3 in CC1, K11 in MC, K3 in CC1, K2 in MC] to end of rnd.

**Rnd 8:** [K2 in MC, K2 in CC1, K2 in MC, K1 in CC1, K4 in MC, K1 in CC1, K4 in MC, K1 in CC1, K2 in MC, K2 in CC1, K1 in MC] to end of rnd.

**Rnd 9:** [K1 in MC, K2 in CC1, K3 in MC, K1 in CC1, K9 in MC, K1 in CC1, K3 in MC, K2 in CC1] to end of rnd.

**Rnd 10:** [K1 in CC1, K4 in MC, K1 in CC1, K5 in MC, K1 in CC1, K5 in MC, K1 in CC1, K4 in MC] to end of rnd.

**Rnd 11:** As rnd 1.

**Rnd 12:** [K1 in CC1, K2 in MC, K1 in CC1, K4 in MC, K1 in CC1, K5 in MC, K1 in CC1, K4 in MC, K1 in CC1, K2 in MC] to end of rnd.

**Rnd 13:** [K1 in CC1, K1 in MC, K2 in CC1, K3 in MC, K3 in CC1, K3 in MC, K3 in CC1, K3 in MC, K2 in CC1, K1 in MC] to end of rnd.

**Rnd 14:** [K3 in CC1, K3 in MC, K2 in CC1, K1 in MC, K2 in CC1, K1 in MC, K2 in CC1, K1 in MC, K2 in CC1, K3 in MC, K2 in CC1] to end of rnd.

**Rnd 15:** [K1 in CC1, K4 in MC, K2 in CC1, K3 in MC, K1 in CC1, K1 in MC, K1 in CC1, K3 in MC, K2 in CC1, K4 in MC] to end of rnd.

**Rnd 16:** [K1 in CC1, K3 in MC, K2 in CC1, K4 in MC, K1 in CC1, K1 in MC, K1 in CC1, K4 in MC, K2 in CC1, K3 in MC] to end of rnd.

**Rnd 17:** [K1 in CC1, K2 in MC, K2 in CC1, K4 in MC, K1 in CC1, K3 in MC, K1 in CC1, K4 in MC, K2 in CC1, K2 in MC] to end of rnd.

**Rnd 18:** As rnd 1.

**Rnd 19:** [K1 in MC, K1 in CC1, K4 in MC, K2 in CC1, K3 in MC, K1 in CC1, K3 in MC, K2 in CC1, K4 in MC, K1 in CC1] to end of rnd.

**Rnd 20:** [K2 in MC, K2 in CC1, K3 in MC, K2 in CC1, K5 in MC, K2 in CC1, K3 in MC, K2 in CC1, K1 in MC] to end of rnd.

**Rnd 21:** [K1 in CC1, K2 in MC, K1 in CC1, K4 in MC, K2 in CC1, K3 in MC, K2 in CC1, K4 in MC, K1 in CC1, K2 in MC] to end of rnd.

**Rnd 22:** [K1 in CC1, K2 in MC, K2 in CC1, K3 in MC, K2 in CC1, K3 in MC, K2 in CC1, K3 in MC, K2 in CC1, K2 in MC] to end of rnd.

**Rnd 23:** [K2 in CC1, K2 in MC, K2 in CC1, K2 in MC, K1 in CC1, K5 in MC, K1 in CC1, K2 in MC, K2 in CC1, K2 in MC, K1 in CC1] to end of rnd.

**Rnd 24:** [K2 in CC1, K3 in MC, K1 in CC1, K1 in MC, K2 in CC1, K2 in MC, K1 in CC1, K2 in MC, K2 in CC1, K1 in MC, K1 in CC1, K3 in MC, K1 in CC1] to end of rnd.

**Rnd 25:** [K2 in CC1, K3 in MC, K3 in CC1, K2 in MC, K3 in CC1, K2 in MC, K3 in CC1, K3 in MC, K1 in CC1] to end of rnd.

**Rnd 26:** [K1 in CC1, K5 in MC, K1 in CC1, K4 in MC, K1 in CC1, K4 in MC, K1 in CC1, K5 in MC] to end of rnd.

## Enjoy!

Annelise Driscoll Gingrow  
Grey Cap Knits