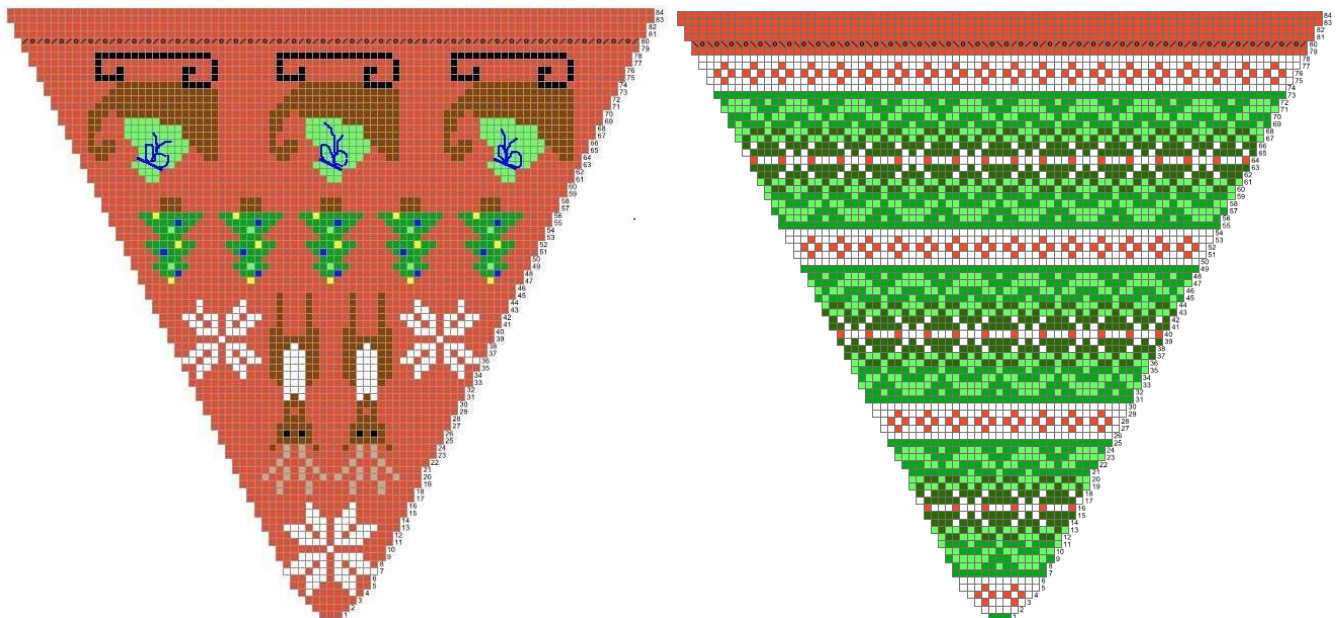


Christmas Throw or Tree Skirt©

Deborah Tomasello



Thank you to cozyknitsca for allowing me to use her great reindeer design!

Santa's Team or Monochrom-ismass. Knit either design. Use the colors shown, or choose your own. You can work it as a throw or add a steek and have a tree skirt. Instructions are included for both. Use beads and embellish as you like. Reindeer eyes and nose as well as tree lights are perfect spots for beads, and you can embroider or add an i-cord to tie Santa's sack of toys. Use your imagination.

Yarn amounts are estimates. Please keep track of the total amounts you use of each color and tell me, so I can put more accurate estimates in the pattern. Thank you. And, with your permission, I will choose a photo from among finished project pics to be the cover photo on the published pattern.

Size: Approx. 43" in diameter after blocking

Materials: Knit Picks Palette in your choice of colors. Depending on how you use the colors, you will need more of some than others. I am guessing, since I haven't made this, you will need 700-900 yds overall. You all will have to tell me what you used after you've finished!

One multi-length cable #9 circular needle

Five #9 DPNs

Stitch markers

Tapestry needle

1.5 yds fleece for backing—

Abbreviations: Bm1 = bumpless m1 = a modified KFB increase that hides the increase bump on the back of your work. See video: <https://www.youtube.com/watch?v=syFeOy1B9Ok>

PM = Place marker.

For Throw:

Instructions: Using two DPNs, CO 4 sts using *color indicated in chart you choose*. K1, Bm1 for 8 sts total.
Purl 8 sts.
K1, Bm1 for 16 sts total.
Purl 16 sts.
K1, (K1, Bm1) for 24 sts total. Split sts evenly on 4 DPNs, 6 sts on each needle. Continue to work in the round. (You will sew opening closed later.)

IMPORTANT: Carry all floats evenly and loosely for a neat-looking back.

Beginning with round two, work CHART as follows: PM, K one chart repeat, PM around (8 chart repeats per round. 7 markers placed.) When you have increased enough sts to warrant it, move work from DPNs to short circular needle, and switch to longer cable lengths as needed throughout.

After completing round 79, knit the next round as follows: YO, K2TOG around. Knit next 4 rounds. BO loosely.

Finishing: With tail from CO, sew closed small slit left at the beginning when knitting the first few rounds. Tie and weave in or trim all color change ends. Hand wash gently, or SOAK and block flat.

Cut fleece to fit back of blanket so that, when the last 2 knit rows are folded back, they create a picot edge and cover the fleece edge. Hand-stitch knitting to fleece. Quilt tie center and a few places around to secure fleece to wool.

Care: Hand wash gently. Dry flat. **DO NOT MACHINE WASH OR DRY.**

For Tree Skirt:

Instructions: Using dominant color of round 4 of chosen chart, CO 82 sts (72 body sts plus 10 steek sts). Knit first 5 sts (steek sts), place marker. Knit round 4 according to chart, placing markers between wedges (8 chart repeats per round) around to last 5 sts. Place marker. Knit final 5 sts (steek sts) Place marker. This last marker marks the beginning/end of each round. Work chart, including steek sts at beginning and end of each round. When you have increased enough sts to warrant it, move work from DPNs to short circular needle, and switch to longer cable lengths as needed throughout.

After completing round 79, knit the next round as follows: YO, K2TOG around. Knit next 4 rounds. BO loosely.

Finishing: Secure sts close to work on either side of steek before cutting open. Cut steeks. Trim edges to 2-3 sts, roll under and stitch to garment. Tie and weave in or trim all color change ends. Hand wash gently, or SOAK and block flat. If you want to add fleece, use instructions for throw, but cut fleece and secure cut steek edges to fleece.

Copyright © 2016 by Deborah Tomasello
All rights reserved. This pattern or any portion thereof
may not be reproduced or used in any manner whatsoever
without the express written permission of the publisher.

WARNING: Giving or accepting a free copy of this pattern, without permission of the designer, is stealing.

CHART A: Santa's Team

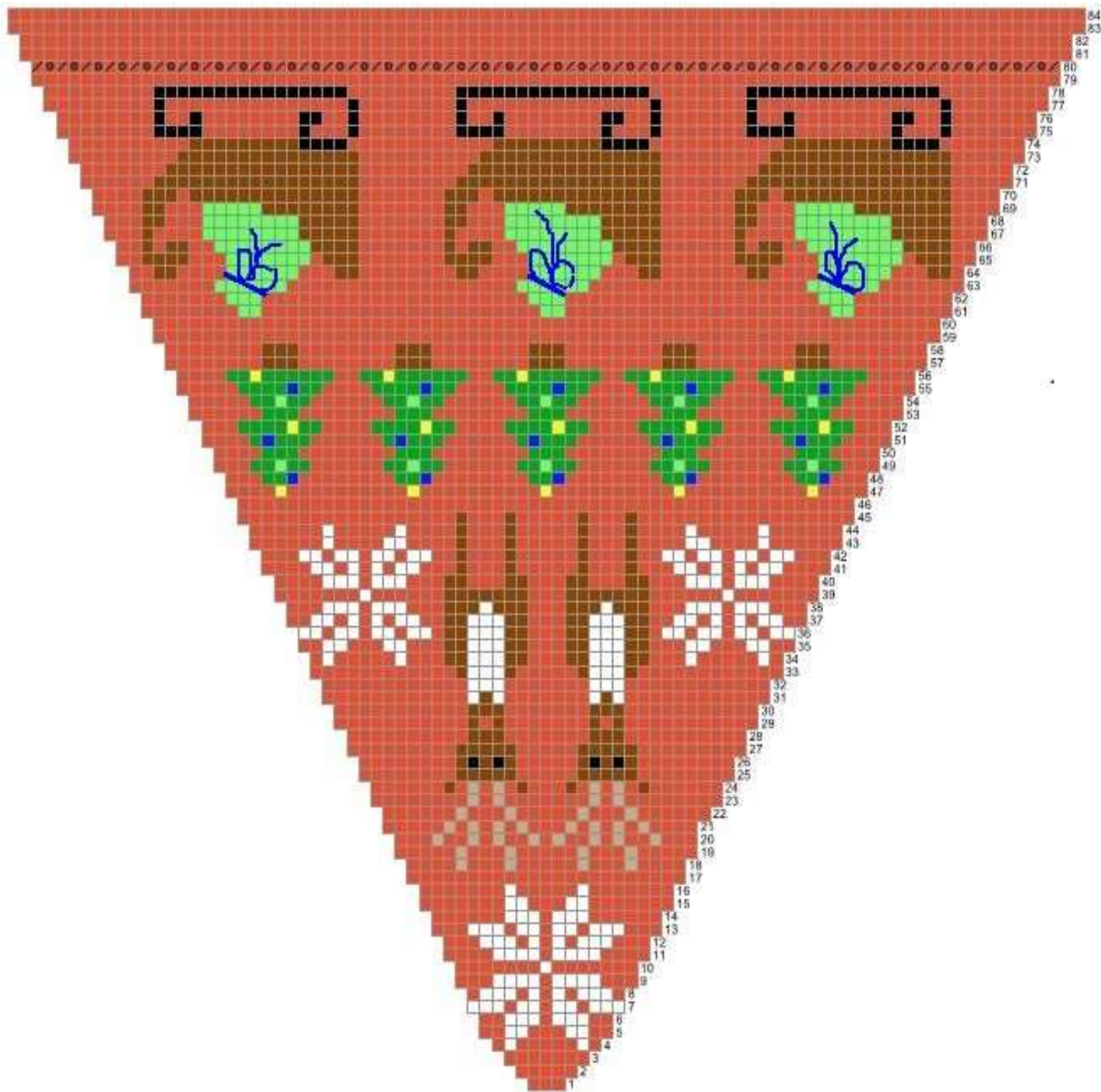


CHART B: Monochrom-ismass

