

# Snowy Cottage Christmas Hat

BY [WIAM'S CRAFTS](#) DECEMBER 03, 2024



As the snow begins to blanket the world in a soft, wintry glow, there's nothing cozier than crafting something warm and festive for the season. This Christmas themed hat is a charming knit inspired by the nostalgic beauty of a snow-covered cottages on a crisp December evenings. With its windows with indoor light shine through glass. It has an intricate design, and a touch of holiday magic, this project is perfect for adding a handmade touch to your winter wardrobe or gifting to someone special during this holiday season. Grab your needles and yarn, settle in by the fire, and let's knit up some holiday cheer!

## Overview:

- **Skill level:** Intermediate.
- **Instructions style:** written pattern + chart.
- **Sizes:** this hat is available in two sizes, **Size S** (child size) and **Size M/L** (adult size), (see detailed measurements below).
- **Techniques needed:** work in the round, (k 1, p 1) ribs, stranded color work, k2tog decrease, making pompoms.

## KnittingPattern

### SNOWY COTTAGE CHRISTMAS HAT



Designed by Wiam's Crafts

## Materials:

- Suggested yarn: Alize Burcum Classic, (100% acrylic, 3.5 oz (100 g), 230 yards (210 m), in the following colors and quantities: "red" 106, "cream" 1, "dark yellow" 216, and "brown mélange" 234 (one skein of each).
- Circular knitting needles, 16" (40 cm) long, sizes US 7 (4.5 mm) and US 8 (5 mm).
- Double pointed needles (DPNs) set, size US 8 (5 mm).
- Tapestry needle.
- Ring stitch marker.

## Sizes and measurements:

- **Size S:** head circumference = 17" - 17.7" (43 - 45 cm), height = 8" (20 cm).
- **Size M/L:** head circumference = 21.5" - 22.5" (55 - 57.5 cm), height = 8.7" (22 cm).



**Gauge:** 22 sts and 20 rounds = 4" x 4" (10 cm x 10 cm) in stockinette stitch and US 8 (5 mm) knitting needles.

## Yardage:

- **Size S:** 158 - 160 yards (145 - 147 m), approx.
- **Size M/L:** 190 - 192 yards (175 - 177 m), approx.

## Knitting Terms:

- **st:** stitch.
- **sts:** stitches.
- **k:** knit.

- **p:** purl.
- **k2tog:** knit two stitches together.



## Instructions:

With red yarn and circular knitting needles US 7 (4.5 mm), cast on **80 (96)** sts. Join in the round. Don't know how to join in the round? here is a short tutorial on how to do it (from [0:26 - 1:15 min](#)):

Put a ring stitch marker at the beginning of rounds, work as follows:

**Rib round:** k 1, p 1, repeat to end.

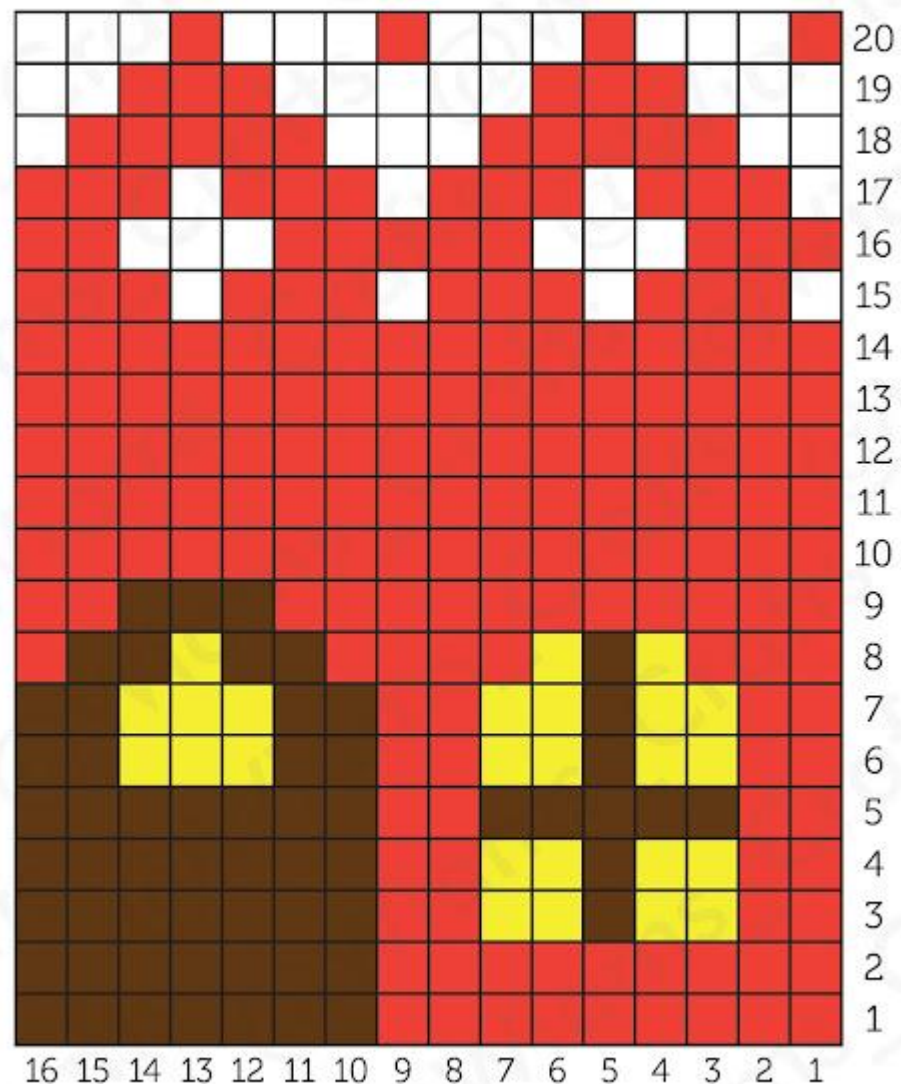
Bind on cream yarn and work the rib round as follows:

**Rib round:** k 1 in cream yarn, p 1 in red yarn, repeat to end. Cut red yarn.

With cream yarn repeat the rib round **four (six)** times.

Bind on brown and yellow yarn. Change to circular knitting needles size US 8 (5 mm) and work the **pattern**. Cut brown and yellow yarn when you finish using them and bind on cream yarn. Cut red yarn, and keep on knitting with cream yarn. Knit **two (five)** rounds.

# Snowy Cottage Christmas Hat



## Decreasing Rounds:

**Round 1:** k 6, k2tog, repeat to end. [70 (**84**) sts]

**Rounds 2-3:** k to end.

**Round 4:** k 2, \*k2tog, k 5, repeat to last 5 sts, k2tog, k 3. [60 (**72**) sts]

**Rounds 5-6:** k to end.

**Round 7:** k 4, k2tog, repeat to end. [50 (**60**) sts]

**Rounds 8-9:** k to end.

**Note:** change to DPNs when needed.

**Round 10:** k 1, k2tog, k 3, repeat to last 4 sts, k2tog, k 2. [40 (**48**) sts]

## Size S:

**Round 11:** k 2, k2tog, repeat to end. (30 sts)

**Round 12:** k2tog, k 1, repeat to end. (20 sts)

**Round 13:** k2tog, k 1, repeat to end. (10 sts)

Cut yarn, leaving a 6" (15 cm) long yarn tail, pull it through all sts and tighten together. Weave in loose ends.

### **Size M/L:**

**Round 11:** k to end.

**Round 12:** k 2, k2tog, repeat to end. (**36** sts)

**Round 13:** k to end.

**Round 14:** k2tog, k 1, repeat to end. (**24** sts)

**Round 15:** k2tog, k 1, repeat to end. (**12** sts)

Cut yarn, leaving a 6" (15 cm) long yarn tail, pull it through all sts and tighten together. Weave in loose ends.

Using cream and red yarn, make a pom-pom **3"- 4"** (**8- 10** cm) in diameter. Fasten the pom-pom to the top of the hat.