

CHASSE

by Isabell Kraemer



Chasse starts at a single point and grows into an asymmetric triangle. This shawl is half lace and half garter stitch, shaped with a sideways construction that forms a crisp line between the two by using some clever increasing and decreasing. The lace pattern is worked on both the right and wrong sides. Charted and line by line instructions are provided.



Notes

The shawl body is shaped with increases on both sides in every row and a central double decrease on right side rows. Once you reach the middle of the shawl, increases are only worked in the lace section (on both right side and wrong side rows), no increases are worked in the garter section. As you continue working the central double decrease, the total number of stitches stays the same.

Shawl

Cast on 5 stitches using the long tail cast on method.

Row 1 (Wrong Side): Kfb, p1, place marker, p1, k1, kfb [2 stitches increased]. 7 stitches.

Row 2 (Right Side): Kfb, knit to 2 stitches before marker, slip 2 as if to k2tog, remove marker, k1, p2sso, place marker, knit to last stitch, kfb.

Row 3 (Wrong Side): Kfb, purl to marker, slip marker, p1, knit to last stitch, kfb [2 stitches increased]. 9 stitches.

Repeat Rows 2-3 once more. 11 stitches.

Setup Section (See Page 5 for Chart)

Row 1 (Right Side): Kfb, knit to 2 stitches before marker, slip 2 as if to k2tog, remove marker, k1, p2sso, place marker, knit to last stitch, kfb.

Row 2 (Wrong Side): Kfb, p1, yo, p2tog, p1, slip marker, p1, knit to last stitch, kfb [2 stitches increased]. 13 stitches.

Row 3 (Right Side): Kfb, knit to 2 stitches before marker, slip 2 as if to k2tog, remove marker, k1, p2sso, place marker, k2, yo, ssk, kfb.

Row 4 (Wrong Side): Kfb, ssp, yo, p3, slip marker, p1, knit to last stitch, kfb [2 stitches increased]. 15 stitches.

Row 5 (Right Side): Kfb, knit to 2 stitches before marker, slip 2 as if to k2tog, remove marker, k1, p2sso, place marker, k3, yo, ssk, kfb.

Row 6 (Wrong Side): Kfb, p3, yo, p2tog, p1, slip marker, p1, knit to last stitch, kfb [2 stitches increased]. 17 stitches.

Row 7 (Right Side): Kfb, knit to 2 stitches before

marker, slip 2 as if to k2tog, remove marker, k1, p2sso, place marker, k3, k2tog, yo, k1, kfb.

Row 8 (Wrong Side): Kfb, p3, yo, p2tog, p2, slip marker, p1, knit to last stitch, kfb [2 stitches increased]. 19 stitches.

Row 9 (Right Side): Kfb, knit to 2 stitches before marker, slip 2 as if to k2tog, remove marker, k1, p2sso, place marker, k3, yo, ssk, k2, kfb.

Row 10 (Wrong Side): Kfb, (p2, ssp, yo) 2 times, slip marker, p1, knit to last stitch, kfb [2 stitches increased]. 21 stitches.

Row 11 (Right Side): Kfb, knit to 2 stitches before marker, slip 2 as if to k2tog, remove marker, k1, p2sso, place marker, (yo, ssk, k2) 2 times, kfb.

Row 12 (Wrong Side): Kfb, p1, (yo, p2tog, p2) 2 times, slip marker, p1, knit to last stitch, kfb [2 stitches increased]. 23 stitches.

Section 1 (See Page 5 for Chart)

Row 1 (Right Side): Kfb, knit to 2 stitches before marker, slip 2 as if to k2tog, remove marker, k1, p2sso, place marker, k2tog, yo, k1, (k1, k2tog, yo, k1) to last 3 stitches, k2, kfb.

Row 2 (Wrong Side): Kfb, p1, yo, p2tog, (p2, yo, p2tog) to 3 stitches before marker, p3, slip marker, p1, knit to last stitch, kfb [2 stitches increased]. 25 stitches.

Row 3 (Right Side): Kfb, knit to 2 stitches before marker, slip 2 as if to k2tog, remove marker, k1, p2sso, place marker, yo, ssk, (k2, yo, ssk) to last stitch, kfb.

Row 4 (Wrong Side): Kfb, ssp, (yo, p2, ssp) to 1 stitch before marker, yo, p1, slip marker, p1, knit to last stitch, kfb [2 stitches increased]. 27 stitches.

Row 5 (Right Side): Kfb, knit to 2 stitches before marker, slip 2 as if to k2tog, remove marker, k1, p2sso, place marker, k1, (yo, ssk, k2) to last 3 stitches, yo, ssk, kfb.

Row 6 (Wrong Side): Kfb, p3, (yo, p2tog, p2) to 1 stitch before marker, p1, slip marker, p1, knit to last stitch, kfb [2 stitches increased]. 29 stitches.

Row 7 (Right Side): Kfb, knit to 2 stitches before

CHASSE

marker, slip 2 as if to k2tog, remove marker, k1, p2sso, place marker, (k1, k2tog, yo, k1) to last stitch, kfb.

Row 8 (Wrong Side): Kfb, p1, (p2, yo, p2tog) to marker, slip marker, p1, knit to last stitch, kfb [2 stitches increased]. 31 stitches.

Row 9 (Right Side): Kfb, knit to 2 stitches before marker, slip 2 as if to k2tog, remove marker, k1, p2sso, place marker, k1, yo, ssk, (k2, yo, ssk) to last 3 stitches, k2, kfb.

Row 10 (Wrong Side): Kfb, p2, ssp, (yo, p2, ssp) to 2 stitches before marker, yo, p2, slip marker, p1, knit to last stitch, kfb [2 stitches increased]. 33 stitches.

Row 11 (Right Side): Kfb, knit to 2 stitches before marker, slip 2 as if to k2tog, remove marker, k1, p2sso, place marker, k2, (yo, ssk, k2) to last stitch, kfb.

Row 12 (Wrong Side): Kfb, p1, (yo, p2tog, p2) to 2 stitches before marker, yo, p2tog, slip marker, p1, knit to last stitch, kfb [2 stitches increased]. 35 stitches.

Row 13 (Right Side): Kfb, knit to 2 stitches before marker, slip 2 as if to k2tog, remove marker, k1, p2sso, place marker, k1, (k1, k2tog, yo, k1) to last 3 stitches, k2, kfb.

Row 14 (Wrong Side): Kfb, p1, yo, p2tog, (p2, yo, p2tog) to 1 stitch before marker, p1, slip marker, p1, knit to last stitch, kfb [2 stitches increased]. 37 stitches.

Row 15 (Right Side): Kfb, knit to 2 stitches before marker, slip 2 as if to k2tog, remove marker, k1, p2sso, place marker, (k2, yo, ssk) to last stitch, kfb.

Row 16 (Wrong Side): Kfb, ssp, (yo, p2, ssp) to 3 stitches before marker, yo, p3, slip marker, p1, knit to last stitch, kfb [2 stitches increased]. 39 stitches.

Row 17 (Right Side): Kfb, knit to 2 stitches before marker, slip 2 as if to k2tog, remove marker, k1, p2sso, place marker, k3, (yo, ssk, k2) to last 3 stitches, yo, ssk, kfb.

Row 18 (Wrong Side): Kfb, p3, (yo, p2tog, p2) to 3 stitches before marker, yo, p2tog, p1, slip marker, p1, knit to last stitch, kfb [2 stitches increased]. 41 stitches.

Row 19 (Right Side): Kfb, knit to 2 stitches before

marker, slip 2 as if to k2tog, remove marker, k1, p2sso, place marker, k2, (k1, k2tog, yo, k1) to last stitch, kfb.

Row 20 (Wrong Side): Kfb, p1, (p2, yo, p2tog) to 2 stitches before marker, p2, slip marker, p1, knit to last stitch, kfb [2 stitches increased]. 43 stitches.

Row 21 (Right Side): Kfb, knit to 2 stitches before marker, slip 2 as if to k2tog, remove marker, k1, p2sso, place marker, k1, (k2, yo, ssk) to last 3 stitches, k2, kfb.

Row 22 (Wrong Side): Kfb, p2, ssp, (yo, p2, ssp) to marker, yo, slip marker, p1, knit to last stitch, kfb [2 stitches increased]. 45 stitches.

Row 23 (Right Side): Kfb, knit to 2 stitches before marker, slip 2 as if to k2tog, remove marker, k1, p2sso, place marker, (yo, ssk, k2) to last stitch, kfb.

Row 24 (Wrong Side): Kfb, p1, (yo, p2tog, p2) to marker, slip marker, p1, knit to last stitch, kfb [2 stitches increased]. 47 stitches.

Repeat Rows 1 to 24 seven more times. 215 stitches.



Section 2

Note: Stitch count stays the same throughout this section, every right side row reduces the amount of stitches of the garter section and every wrong side row increases the amount of stitches of the lace section of the shawl.

Row 1 (Right Side): Knit to 2 stitches before marker, slip 2 as if to k2tog, remove marker, k1, p2sso, place marker, k2tog, yo, k1, (k1, k2tog, yo, k1) to last 3 stitches, k2, kfb.

Row 2 (Wrong Side): Kfb, p1, yo, p2tog, (p2, yo, p2tog) to 3 stitches before marker, p3, slip marker, p1, knit to end.

Row 3 (Right Side): Knit to 2 stitches before marker, slip 2 as if to k2tog, remove marker, k1, p2sso, place marker, yo, ssk, (k2, yo, ssk) to last stitch, kfb.

Row 4 (Wrong Side): Kfb, ssp, (yo, p2, ssp) to 1 stitch before marker, yo, p1, slip marker, p1, knit to end.

Row 5 (Right Side): Knit to 2 stitches before marker, slip 2 as if to k2tog, remove marker, k1, p2sso, place marker, k1, (yo, ssk, k2) to last 3 stitches, yo, ssk, kfb.

Row 6 (Wrong Side): Kfb, p3, (yo, p2tog, p2) to 1 stitch before marker, p1, slip marker, p1, knit to end.

Row 7 (Right Side): Knit to 2 stitches before marker, slip 2 as if to k2tog, remove marker, k1, p2sso, place marker, (k1, k2tog, yo, k1) to last stitch, kfb.

Row 8 (Wrong Side): Kfb, p1, (p2, yo, p2tog) to marker, slip marker, p1, knit to end.

Row 9 (Right Side): Knit to 2 stitches before marker, slip 2 as if to k2tog, remove marker, k1, p2sso, place marker, k1, yo, ssk, (k2, yo, ssk) to last 3 stitches, k2, kfb.

Row 10 (Wrong Side): Kfb, p2, ssp, (yo, p2, ssp) to 2 stitches before marker, yo, p2, slip marker, p1, knit to end.

Row 11 (Right Side): Knit to 2 stitches before marker, slip 2 as if to k2tog, remove marker, k1, p2sso, place marker, k2, (yo, ssk, k2) to last stitch, kfb.

Row 12 (Wrong Side): Kfb, p1, (yo, p2tog, p2) to 2 stitches before marker, yo, p2tog, slip marker, p1, knit to end.

Row 13 (Right Side): Knit to 2 stitches before marker, slip 2 as if to k2tog, remove marker, k1, p2sso, place marker, k1, (k1, k2tog, yo, k1) to last 3 stitches, k2, kfb.

Row 14 (Wrong Side): Kfb, p1, yo, p2tog, (p2, yo, p2tog) to 1 stitch before marker, p1, slip marker, p1, knit to end.

Row 15 (Right Side): Knit to 2 stitches before marker, slip 2 as if to k2tog, remove marker, k1, p2sso, place marker, (k2, yo, ssk) to last stitch, kfb.

Row 16 (Wrong Side): Kfb, ssp, (yo, p2, ssp) to 3 stitches before marker, yo, p3, slip marker, p1, knit to end.

Row 17 (Right Side): Knit to 2 stitches before marker, slip 2 as if to k2tog, remove marker, k1, p2sso, place marker, k3, (yo, ssk, k2) to last 3 stitches, yo, ssk, kfb.

Row 18 (Wrong Side): Kfb, p3, (yo, p2tog, p2) to 3 stitches before marker, yo, p2tog, p1, slip marker, p1, knit to end.

Row 19 (Right Side): Knit to 2 stitches before marker, slip 2 as if to k2tog, remove marker, k1, p2sso, place marker, k2, (k1, k2tog, yo, k1) to last stitch, kfb.

Row 20 (Wrong Side): Kfb, p1, (p2, yo, p2tog) to 2 stitches before marker, p2, slip marker, p1, knit to end.

Row 21 (Right Side): Knit to 2 stitches before marker, slip 2 as if to k2tog, remove marker, k1, p2sso, place marker, k1, (k2, yo, ssk) to last 3 stitches, k2, kfb.

Row 22 (Wrong Side): Kfb, p2, ssp, (yo, p2, ssp) to marker, yo, slip marker, p1, knit to end.

Row 23 (Right Side): Knit to 2 stitches before marker, slip 2 as if to k2tog, remove marker, k1, p2sso, place marker, (yo, ssk, k2) to last stitch, kfb.

Row 24 (Wrong Side): Kfb, p1, (yo, p2tog, p2) to marker, slip marker, p1, knit to end.

Repeat Rows 1 to 24 seven more times, then Rows 1 to 20 once more. You should have 1 stitch of the garter section left.

CHASSE

Bind off: Slip 2 stitches as if to k2tog, remove marker, k1, p2sso, bind off remaining stitches as follows: (k1, slip 2 stitches back to left hand needle, k2tog tbl) to end, pull yarn through last stitch.

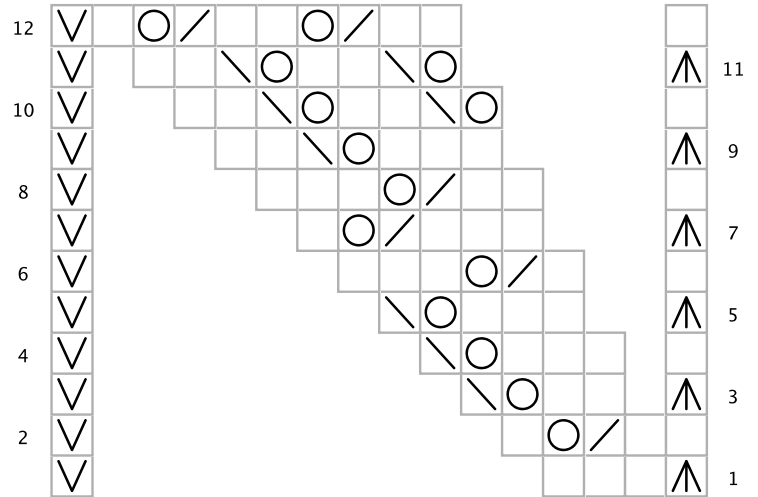
Finishing

Weave in all ends and wet block the shawl to measurements.

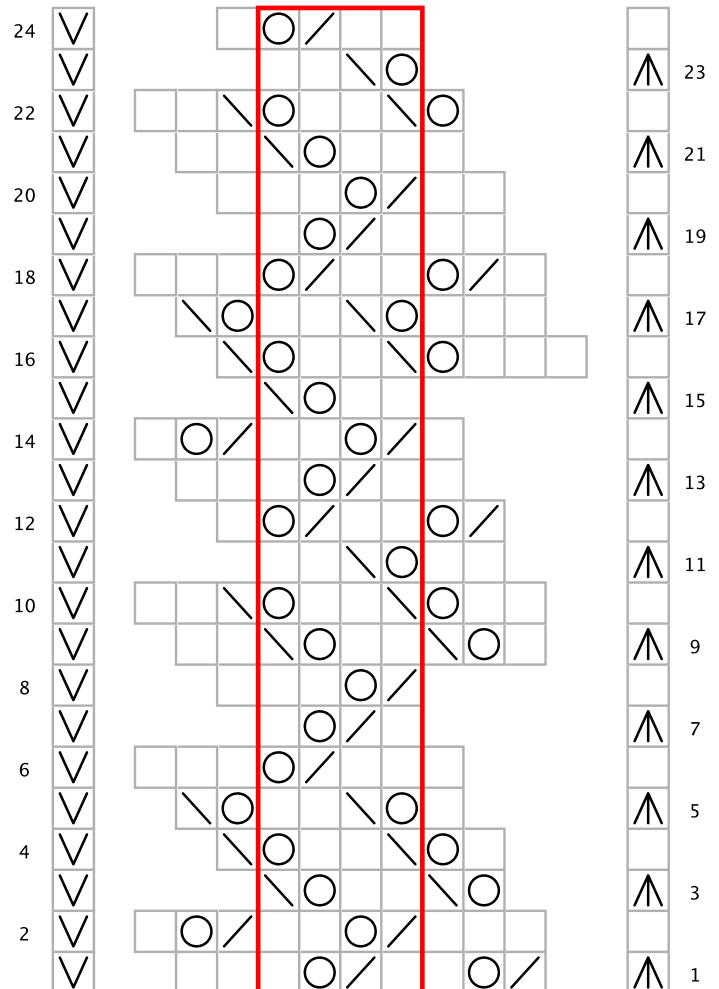
Key

- right side: knit
wrong side: purl
- ^ sl2tog-k1-p2sso
- v right side: kfb
wrong side: kfb
- / right side: k2tog
wrong side: p2tog
- \ right side: ssk
wrong side: ssp
- o yo
- repeat

Setup Chart



Section 1 and 2 Chart



Yarn

Miss Babs Yearning (65% Merino Wool, 35% Tussah Silk; 1200 yards/1095 meters/6.9 ounces/195 grams); 1 skein, shown in color Espresso.

Or approximately 1155 yards/1060 meters in heavy lace weight yarn.

Finished Measurements

Approximately 98" (250 cm) wide along top edge and 39" (100 cm) high.

Needles

US 3 [3.25 mm] circular needle, 40" (100 cm) long.

Gauge

21 Stitches x 46 Rows = 4"/10 cm in garter stitch after blocking.

Gauge is not crucial for this project, but will affect yardage and finished size if different from above.

Notions

Tapestry needle
Stitch markers

Abbreviations

k2tog: Knit two stitches together [1 stitch decreased]

k: Knit

kfb: Knit into front loop and back loop of the same stitch [1 stitch increased]

p2tog: Purl 2 stitches together [1 stitch decreased]

p: Purl

s2tog-k1-p2sso: Slip two stitches as if to k2tog, knit 1 stitch, pass slipped stitches over [double decrease; 2 stitches decreased]

ssk: Slip 2 stitches each as if to knit, insert left needle into front loops of these stitches and knit them together through the back loop [1 stitch decreased]

ssp: Slip two stitches, one at a time, as if to knit. Slip stitches back to left needle in turned position, purl these two stitches together through the back loops [1 stitch decreased]

tbl: Through the back loop

yo: Yarn over [1 stitch increased]

