

Ceramic



Use the hashtag #ceramicmkal to share your project.

Pattern, pictures and notes © Audrey Borrego. This pattern is for personal use only.

Yarn:

You will need three colours of fingering weight yarn in the following amounts :

MC : 520 meters – 570 yards

CC1 : 600 meters – 660 yards

CC2 : 120 meters – 135 yards

The sample is knit with Knitting for Olive Merino in Putty (MC), Navy blue (CC1) and Dusty dove blue (CC2).

Needles :

3 mm (US 2.5) circular needles with appropriate cable length to knit in the round (60 cm – 24" maximum) or magic loop
or size required to get gauge

Gauge :

28 sts x 30 rnds per 10 cm – 4" in stranded knitting after blocking

Note that a different gauge will affect size and yarn usage.

Size :

128 cm – 50 1/2" circumference

23 cm – 9" width

Notions :

2 different stitch markers, tapestry needle and scissors

Scrap yarn for the provisional cast-on and to place sts on hold

A spare needle for the kitchener stitch

Row counter recommended

Techniques used :

Provisional cast-on on waste yarn

Two colours stranded knitting in the round with rare floats to catch

Kitchener stitch

Pattern includes charted instructions

Reading Charts :

When knitting in the round, always read the Chart from right to left.

Note that to be easier to read, each Chart has been split into 2 parts.

Colourwork :

Catching floats : in fingering weight, you can catch floats when skipping more than 7 stitches. You may do it more often if you prefer, just make sure not to catch a float in the same place in two consecutive rounds.

Colour dominance : CC1 will form the motifs while MC and CC2 will be the background colour. To have consistent colour dominance : hold CC1 to the left and always carry it under MC and CC2 without twisting the strands.

You may notice that your fabric is rather irregular prior to blocking. This is common even amongst experience colourwork knitters. Do not let it bother you because as long as you are using a wool-based yarn, blocking will massively improve this.

Making a smaller cowl :

To make a cowl with about half the circumference, work only 3 sections.

Work each Chart only once on one half of the cowl as follows :

Section 1 : Work Chart A to side m, work Chart B to BOR.

Section 2 : Work Chart C to side m, work Chart D to BOR.

Section 3 : Work Chart E to side m, work Chart F to BOR.

Abbreviations :

- st(s) : stitch(es)
- rnd : round
- BOR : beginning of round
- m : marker / pm : place marker
- MC : main colour
- CC1 : contrast colour 1
- CC2 : contrast colour 2

Cast-on and set-up :

With MC and the [waste yarn method](#) or your preferred provisional cast-on method, cast-on 130 sts on scrap yarn.

(How to do a provisional cast-on with waste yarn by Solène Le Roux)

Being careful not to twist the sts, join to work in the round and PM for BOR.

PM also after 65 sts for the side of the cowl.

Knit 1 round with MC.

Note : You should have 2 total rounds of MC already before starting the Charts. If you used a different provosional cast-on that did not use your MC, knit 2 rounds instead of 1.

Section 1 :

Work Chart A from pages 5-6, making 2 repeats on each rnd.

If you'd like to divide this clue further with different colours : change after rnd 30.

Section 2 :

Work Chart B from pages 7-8, making 2 repeats on each rnd.

If you'd like to divide this clue further with different colours : change after rnd 15.

Section 3 :

Work Chart C from pages 9-10, making 2 repeats on each rnd.

If you'd like to divide this clue further with different colours : change after rnd 15.

Section 4 :

Work Chart D from pages 11-12, making 2 repeats on each rnd.

If you'd like to divide this clue further with different colours : change after rnd 15 and 47.

Section 5 :

Work Chart E from pages 13-14, making 2 repeats on each rnd.

If you'd like to divide this clue further with different colours : change after rnd 30.

Section 6 :

Work Chart F from pages 15-16, making 2 repeats on each rnd.

If you'd like to divide this clue further with different colours : change after rnd 37.

Finishing :

Cut yarns, remove markers and place sts on hold.

Weave in all ends on the inside and gently block the cowl.

Once completely dry, place the end sts back on the needles.

Unravel the provisional cast-on and place the beginning sts on another set of needles. Arrange the sts to make sure they are not twisted.

Note : If you do not want to work kitchener stitch on a large number of sts, you may use a [three needle bind-off](#) instead. Because you will be doing it facing the right side of the cowl, it will create a visible small seam.

(3-needle BO tutorial by Very Pink Knits)

Join MC and with it, being careful not to twist the cowl unless you want a moebius effect, graft the beginning and end sts together to close the tube using the [kitchener stitch](#).

(Kitchener stitch tutorial by Very Pink Knits)

Weave the MC ends from the grafting inside the cowl.

CHART A

Part 1

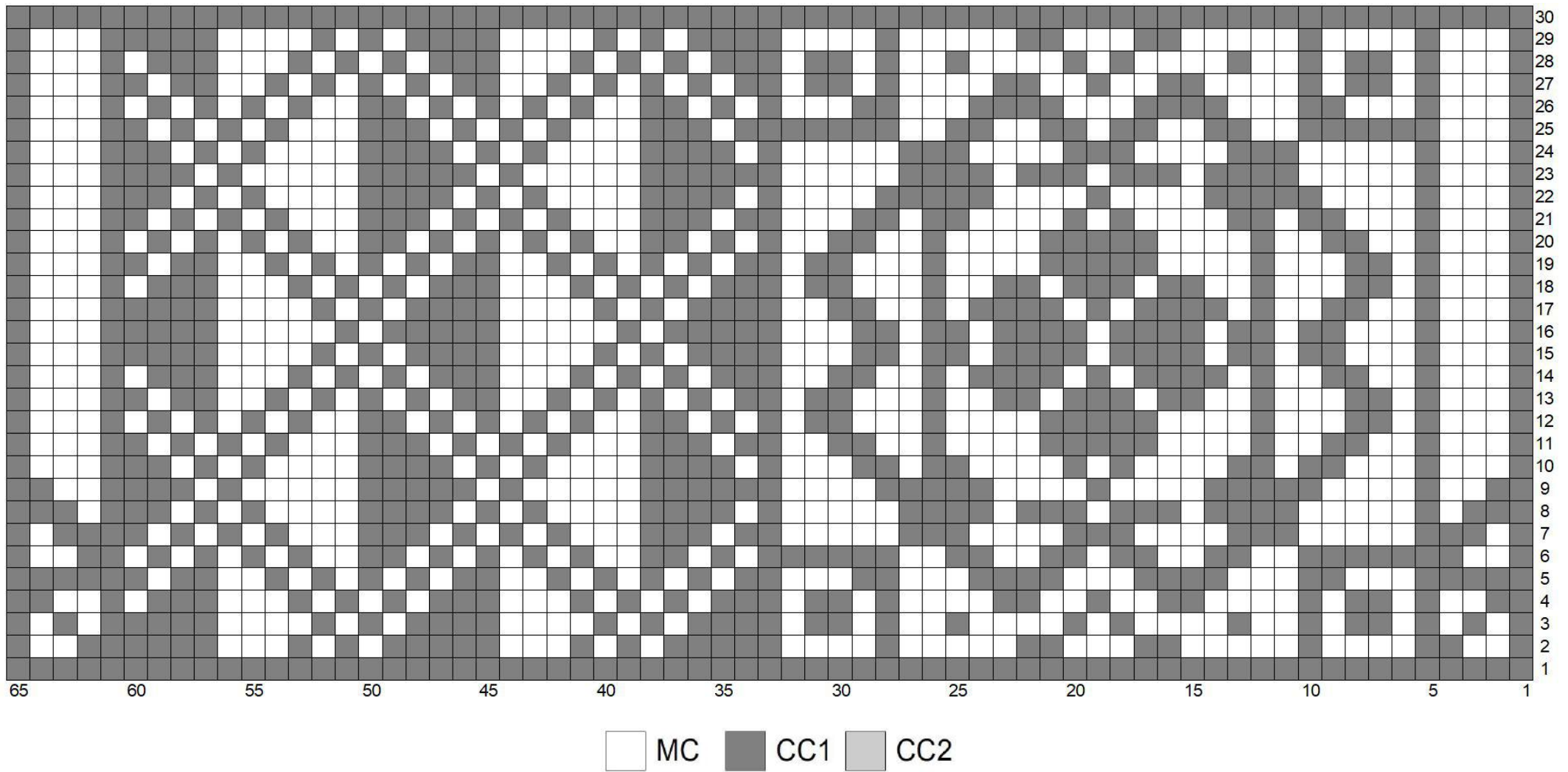


Chart A **Part 2**

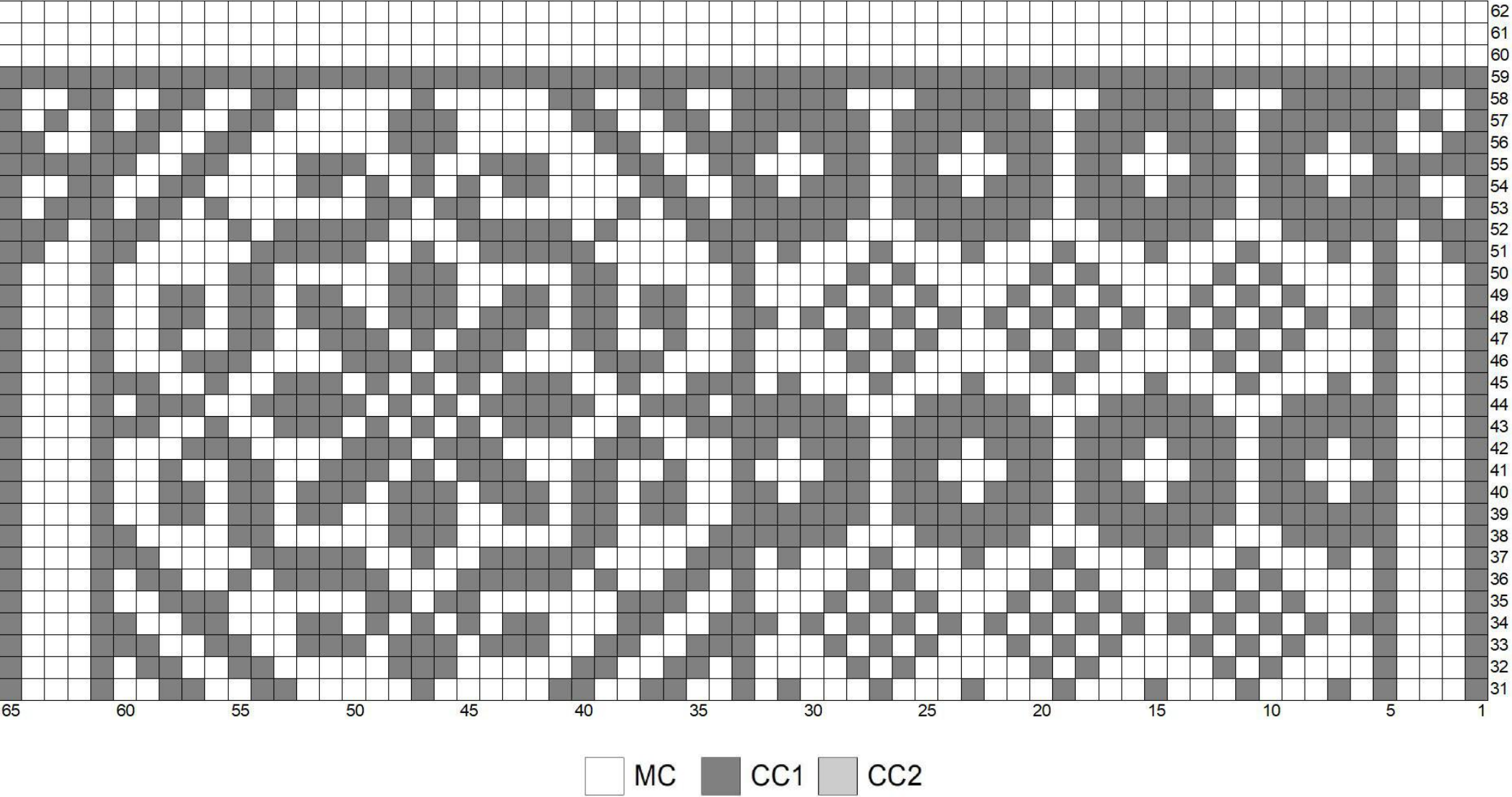


CHART B

Part 1

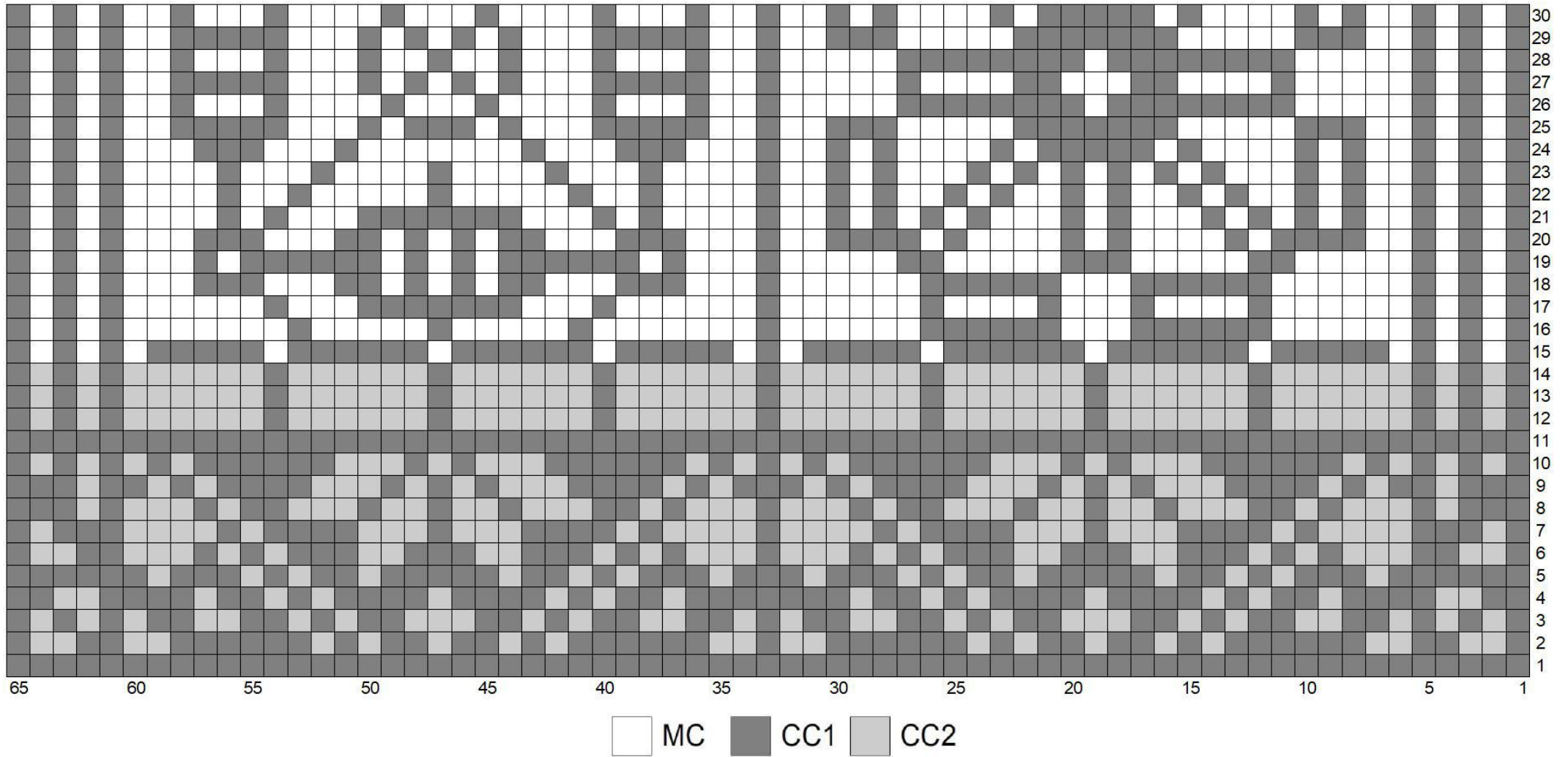


Chart B **Part 2**

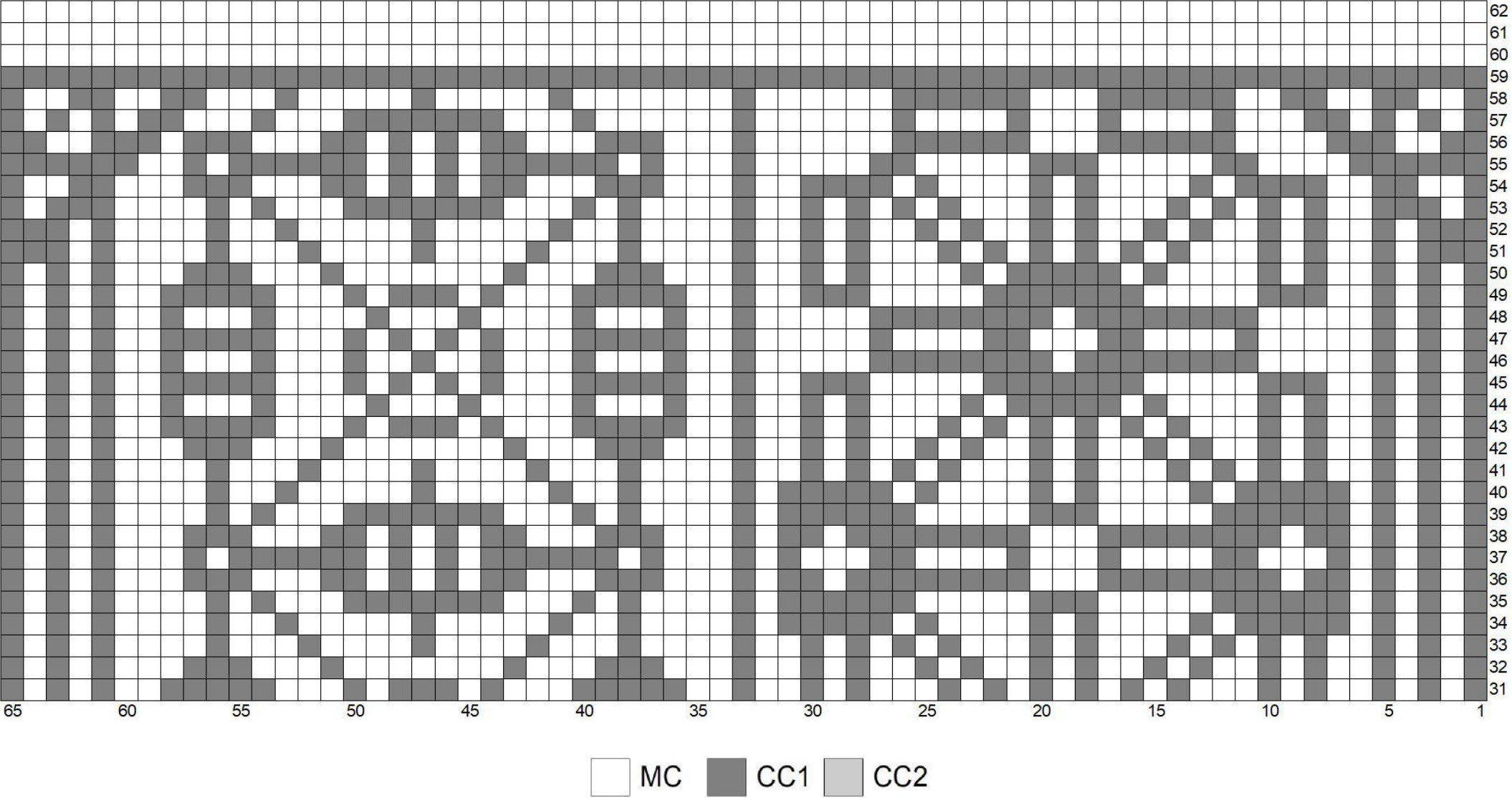
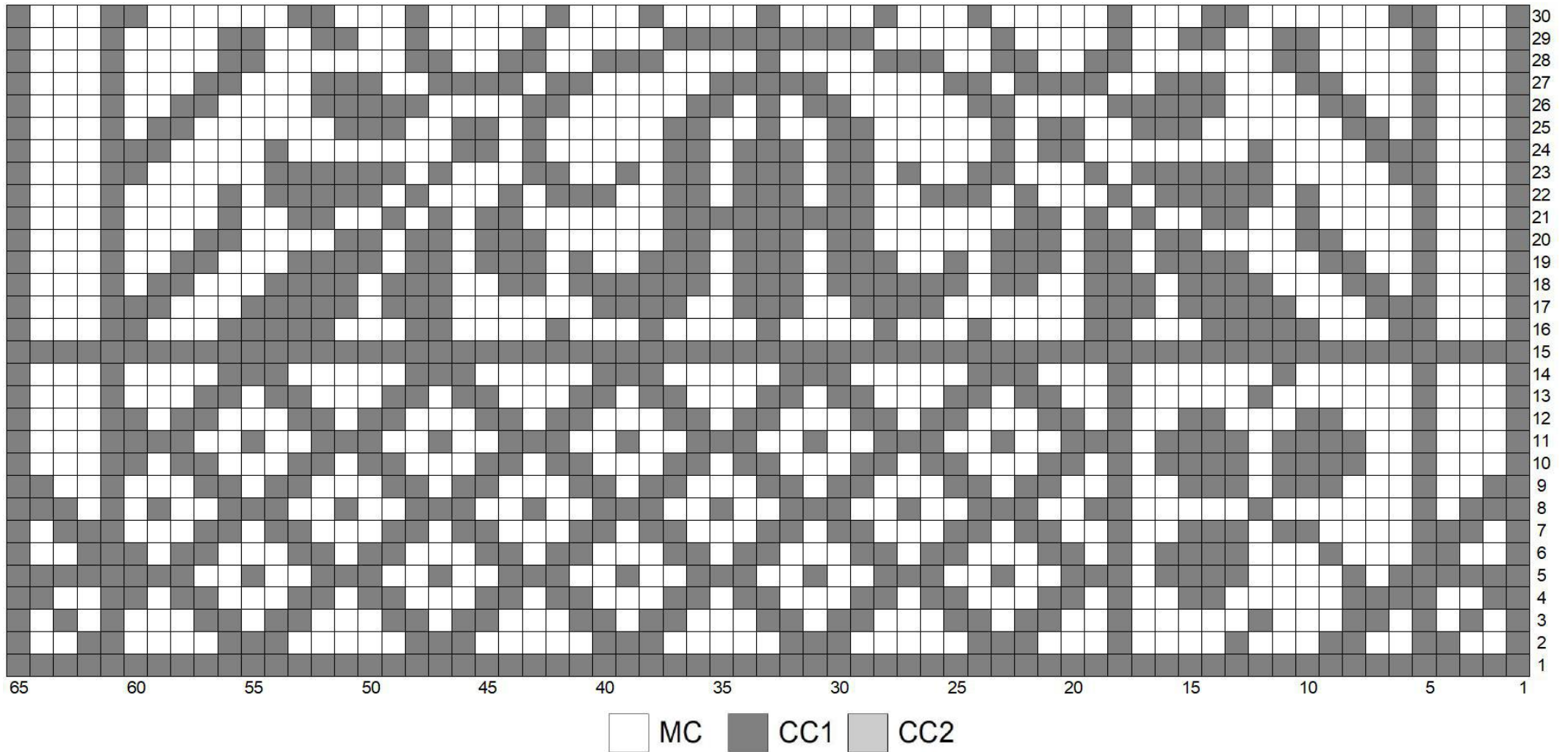


CHART C

Part 1



Ceramic 9

Chart C **Part 2**

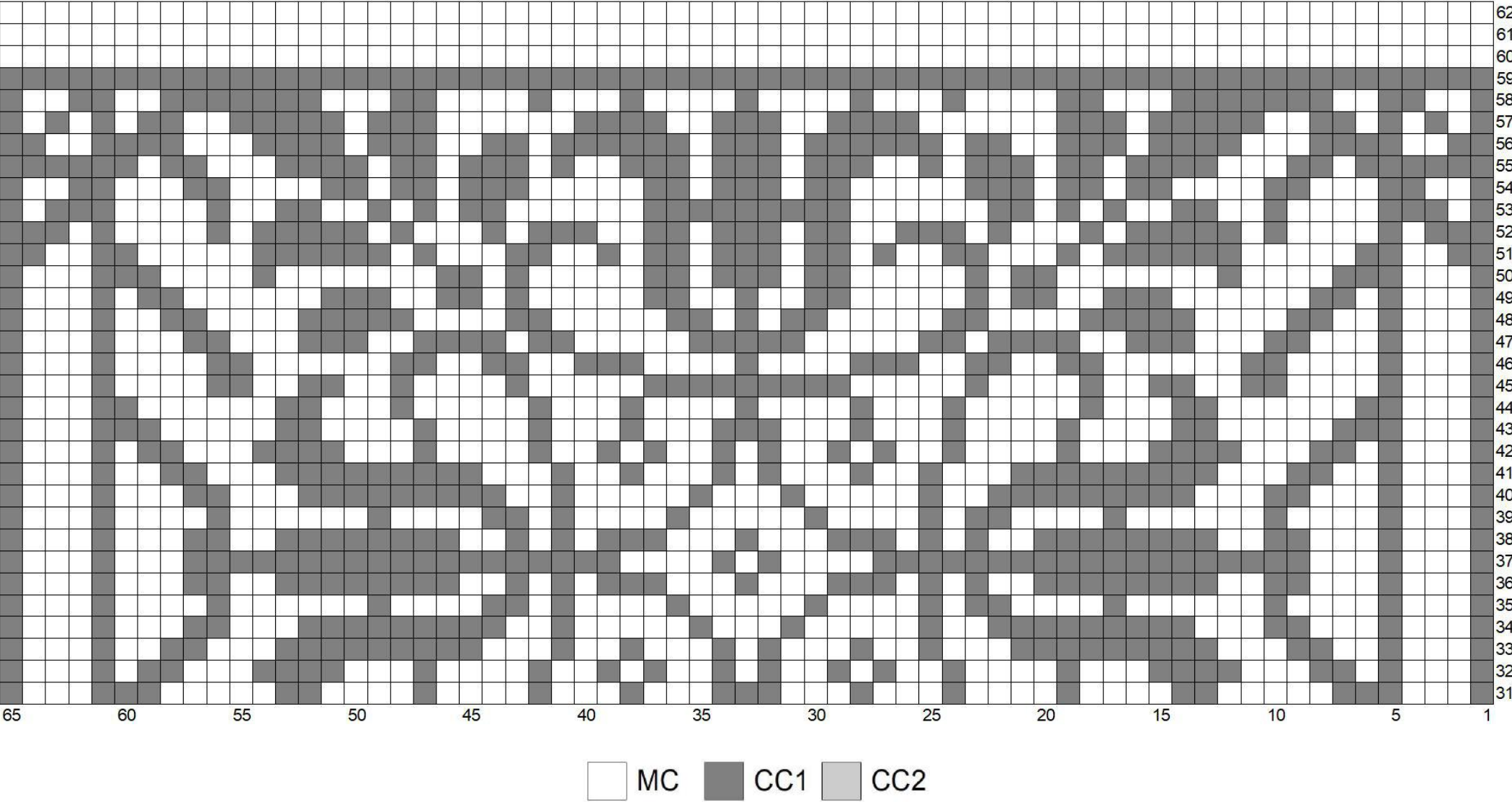


CHART D

Part 1

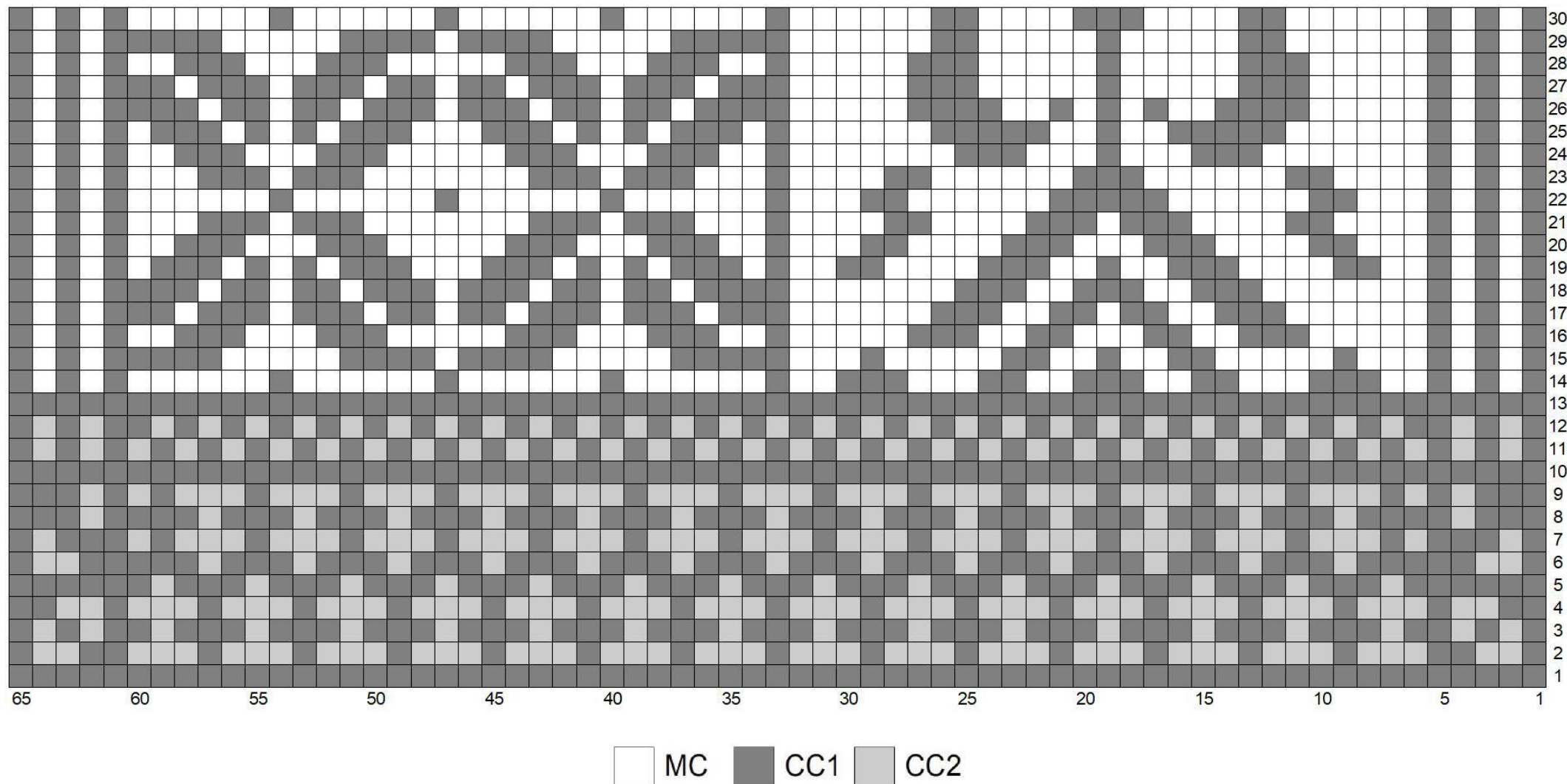


Chart D **Part 2**

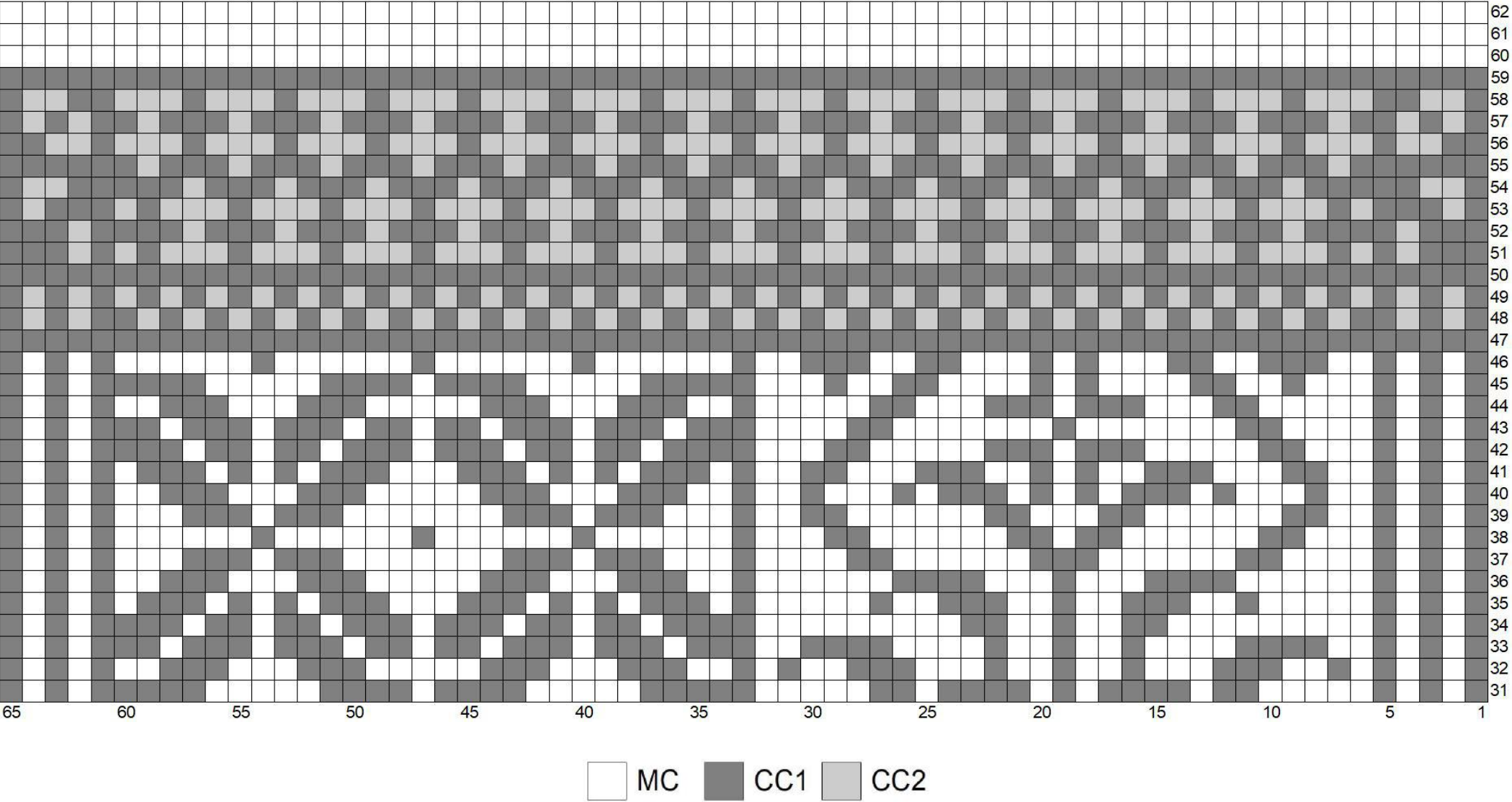


CHART E

Part 1

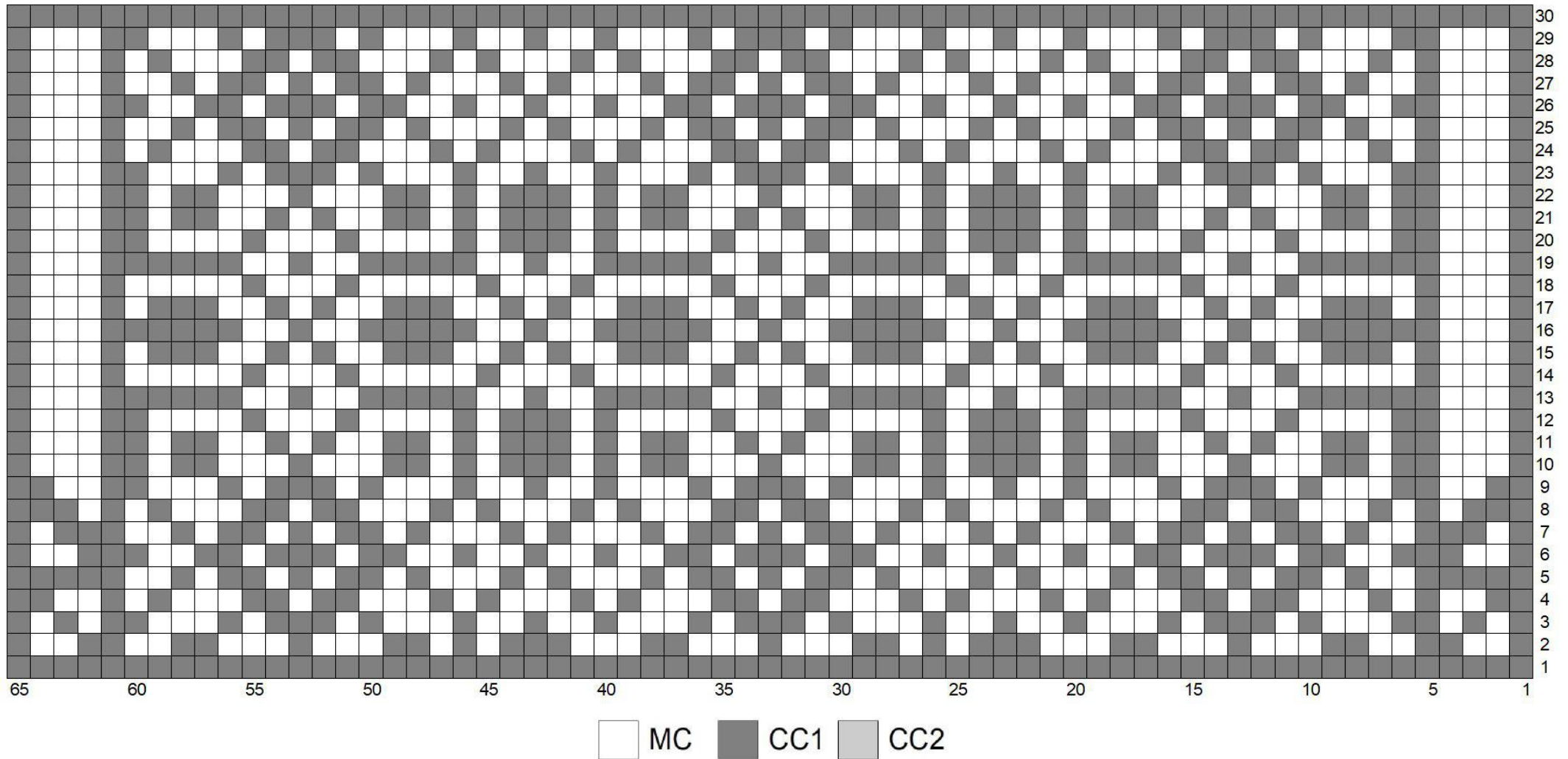
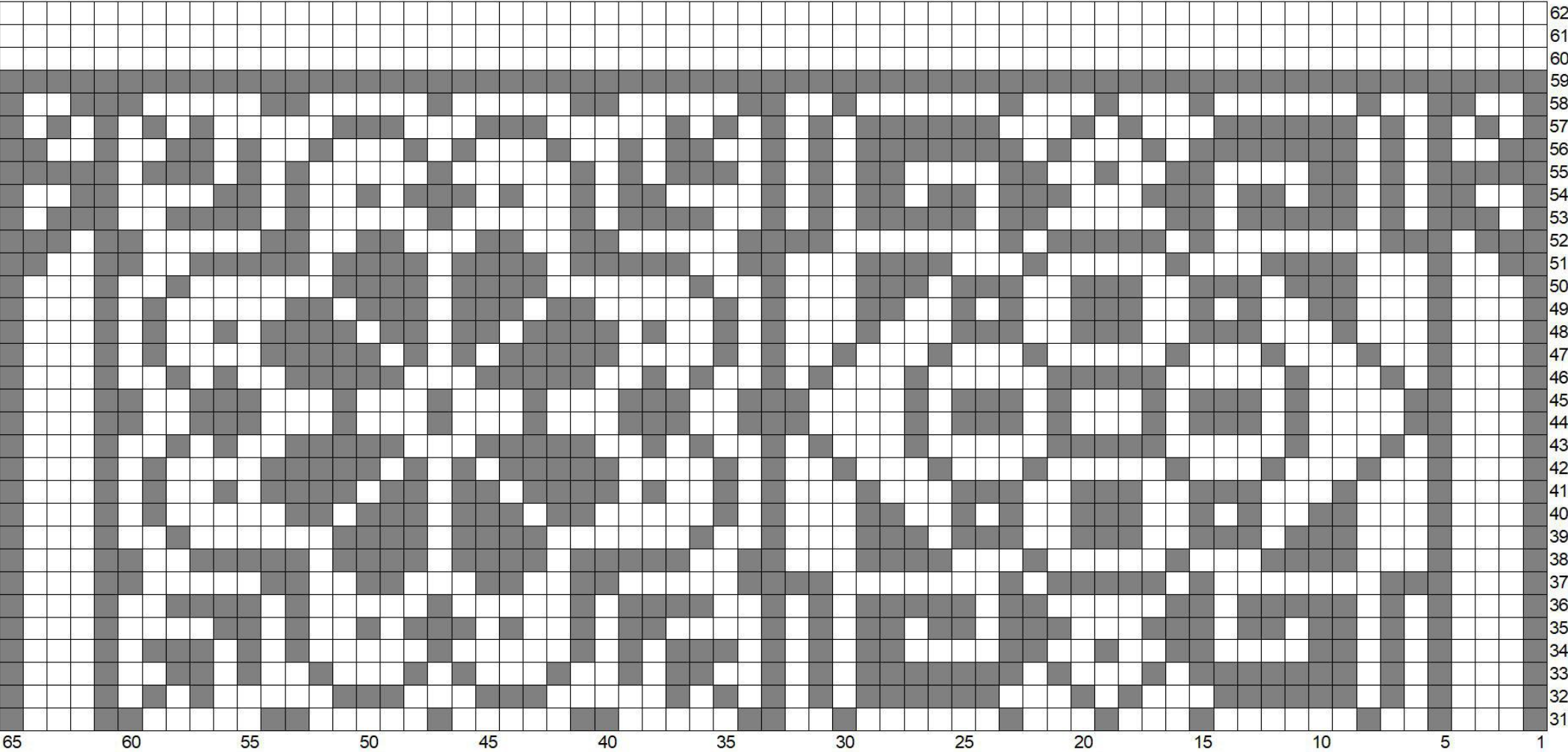


Chart E **Part 2**



MC CC1 CC2

CHART F

Part 1

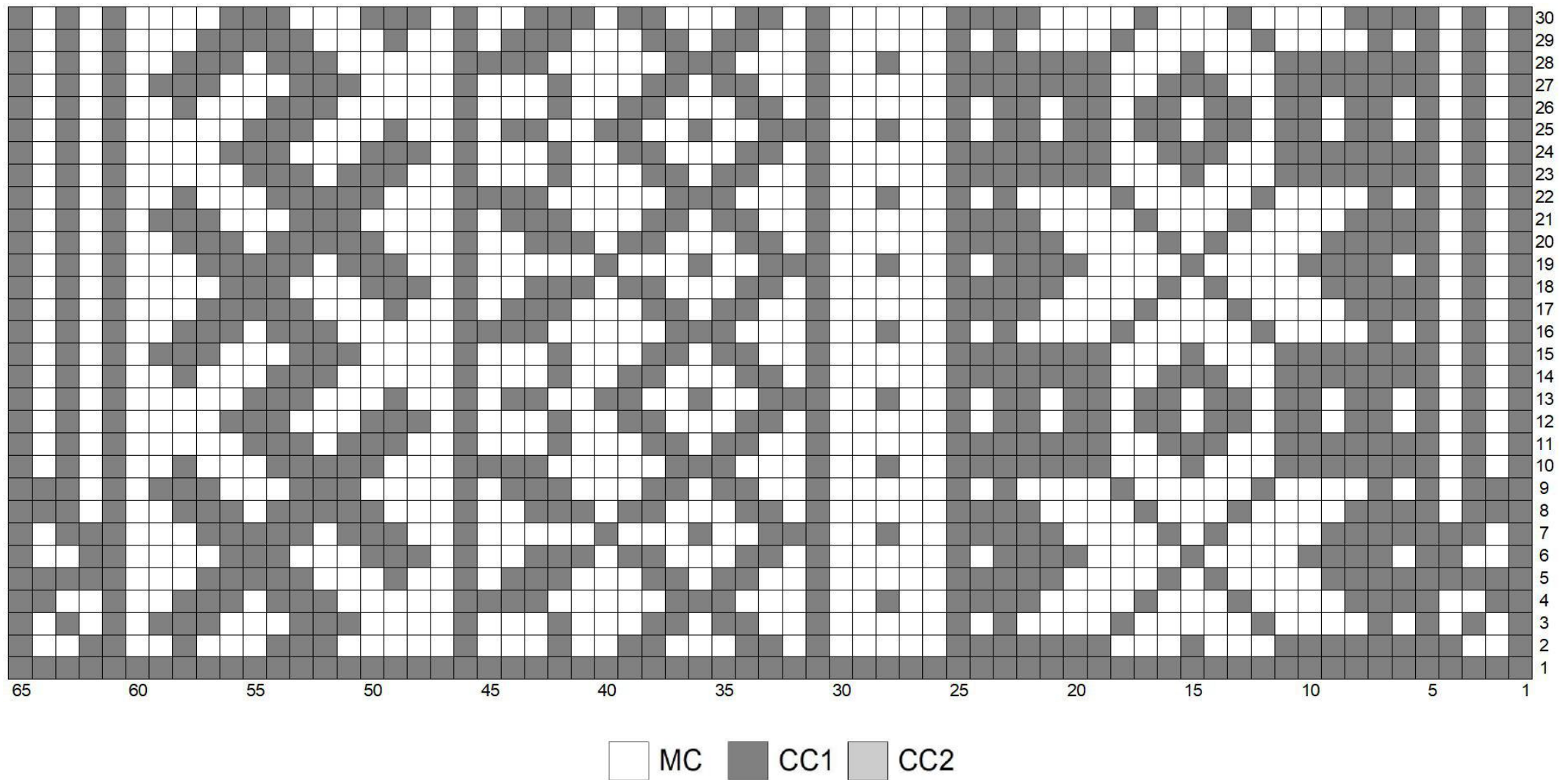
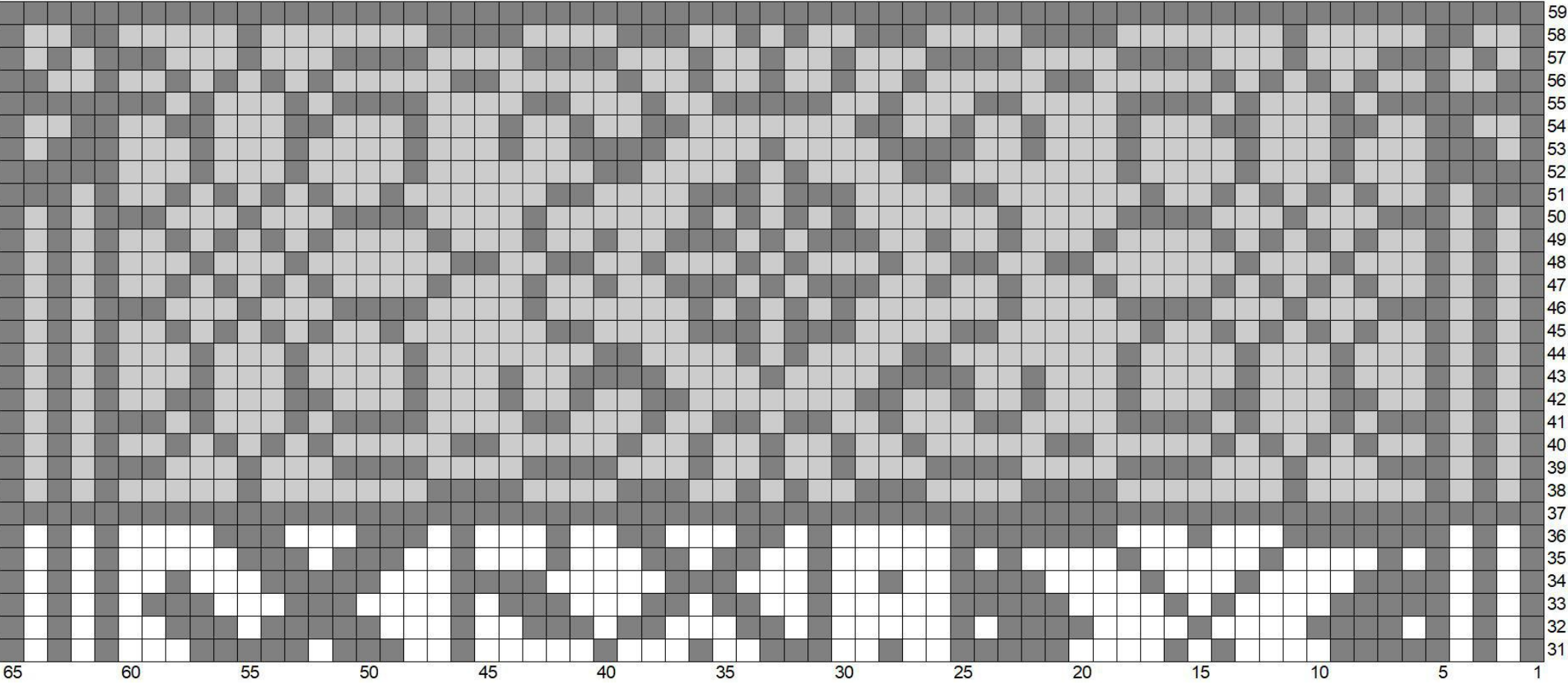


Chart F **Part 2**



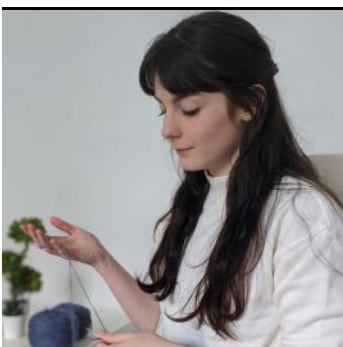
MC CC1 CC2

Thank you

for choosing a Yarnflakes pattern !

I hope you enjoyed your project and will love the finished piece. If you have any questions or suggestions, please contact me on Ravelry (Yarnflakes).

I love to see you knit my designs. If you want to share pictures of your progress you can join me on my Ravelry group : www.ravelry.com/discuss/yarnflakes and tag me on Instagram @yarnflakes.



Find more designs :
www.ravelry.com/designers/audrey-borrego
www.payhip.com/yarnflakes

Patreon Yarnflakes

Instagram @yarnflakes
Ravelry @Yarnflakes