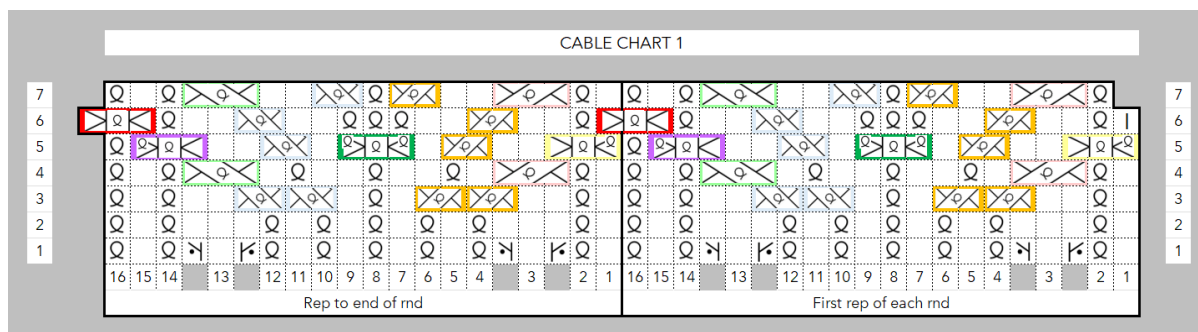
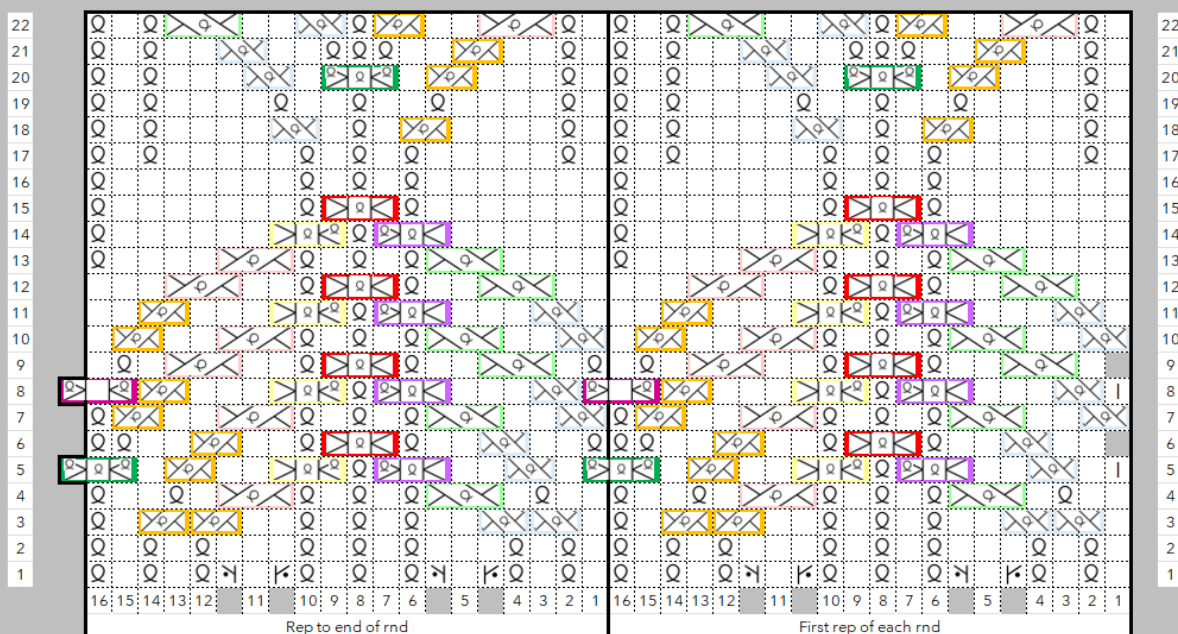


COLOUR-CODED CABLE CHARTS



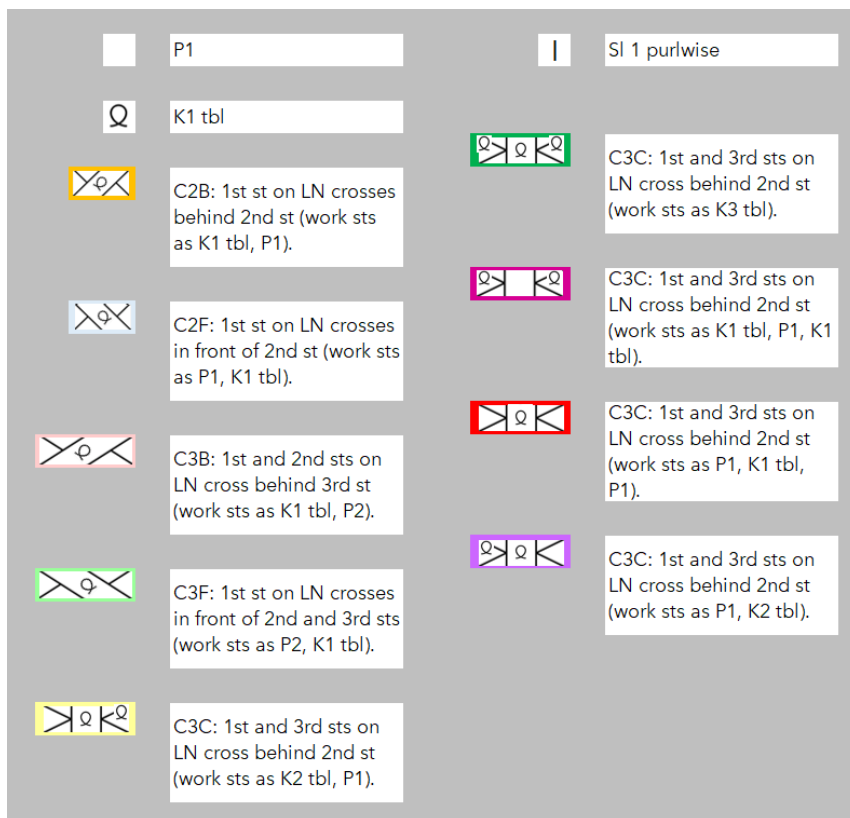
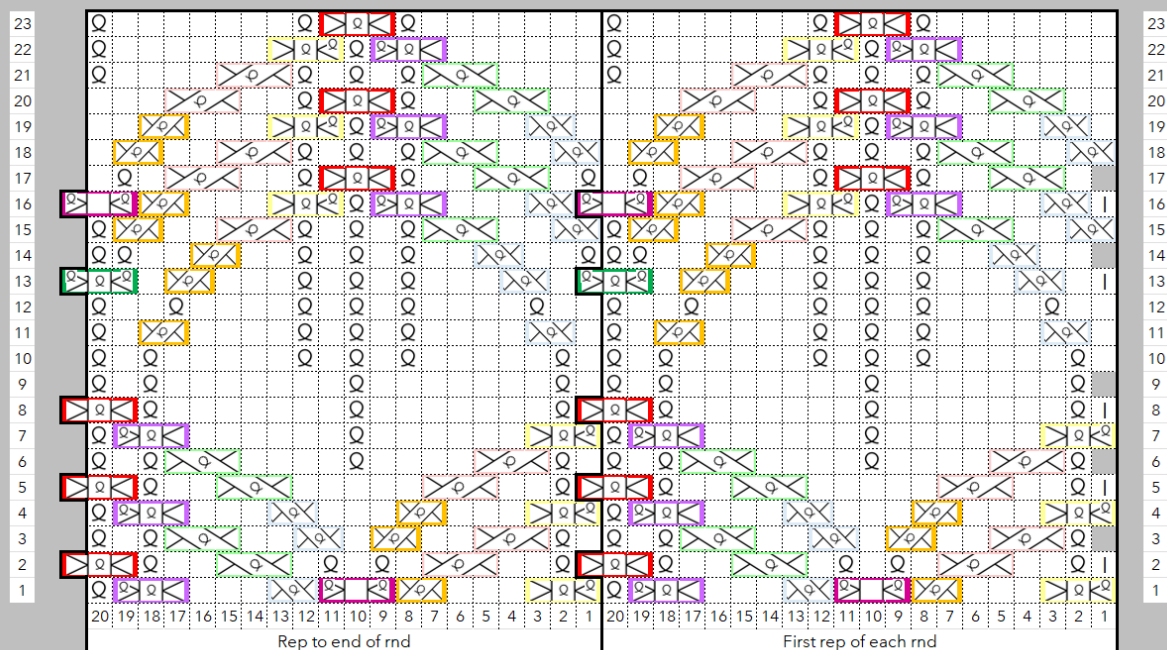
	P1		Sl 1 purlwise
	K1 tbl		m1L purl: LN moves from front to back to lift strand between sts; purl lifted strand tbl.
	C2B: 1st st on LN crosses behind 2nd st (work sts as K1 tbl, P1).		m1R purl: LN moves from back to front to lift strand between sts; purl lifted strand tfl.
	C2F: 1st st on LN crosses in front of 2nd st (work sts as P1, K1 tbl).		C3B: 1st and 2nd sts on LN cross behind 3rd st (work sts as K1 tbl, P2).
	C3B: 1st and 2nd sts on LN cross behind 3rd st (work sts as K1 tbl, P2).		C3C: 1st and 3rd sts on LN cross behind 2nd st (work sts as P1, K2 tbl).
	C3F: 1st st on LN crosses in front of 2nd and 3rd sts (work sts as P2, K1 tbl).		C3C: 1st and 3rd sts on LN cross behind 2nd st (work sts as P1, K1 tbl, P1).
	C3C: 1st and 3rd sts on LN cross behind 2nd st (work sts as K2 tbl, P1).		C3C: 1st and 3rd sts on LN cross behind 2nd st (work sts as K3 tbl).

CABLE CHART 1: HEIGHT EXTENSION

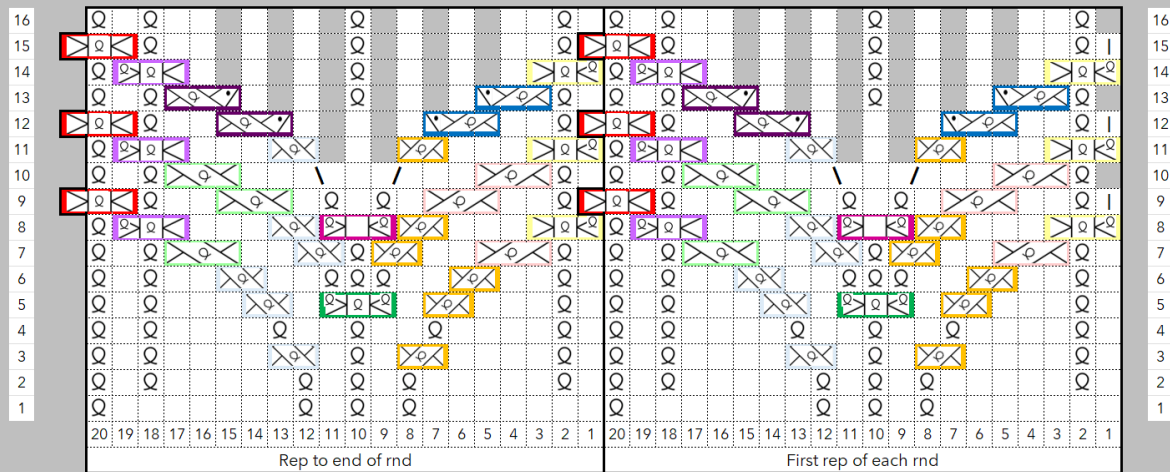


	P1		Sl 1 purlwise
	K1 tbl		m1L purl: LN moves from front to back to lift strand between sts; purl lifted strand tbl.
	C2B: 1st st on LN crosses behind 2nd st (work sts as K1 tbl, P1).		m1R purl: LN moves from back to front to lift strand between sts; purl lifted strand tfl.
	C2F: 1st st on LN crosses in front of 2nd st (work sts as P1, K1 tbl).		C3B: 1st and 2nd sts on LN cross behind 3rd st (work sts as K1 tbl, P2).
	C3B: 1st and 2nd sts on LN cross behind 3rd st (work sts as K1 tbl, P2).		C3C: 1st and 3rd sts on LN cross behind 2nd st (work sts as P1, K2 tbl).
	C3F: 1st st on LN crosses in front of 2nd and 3rd sts (work sts as P2, K1 tbl).		C3C: 1st and 3rd sts on LN cross behind 2nd st (work sts as P1, K1 tbl, P1).
	C3C: 1st and 3rd sts on LN cross behind 2nd st (work sts as K2 tbl, P1).		C3C: 1st and 3rd sts on LN cross behind 2nd st (work sts as K3 tbl).
	C3: 1st and 3rd sts on LN cross behind 2nd st; work sts as K1 tbl, P1, K1 tbl.		

CABLE CHART 2

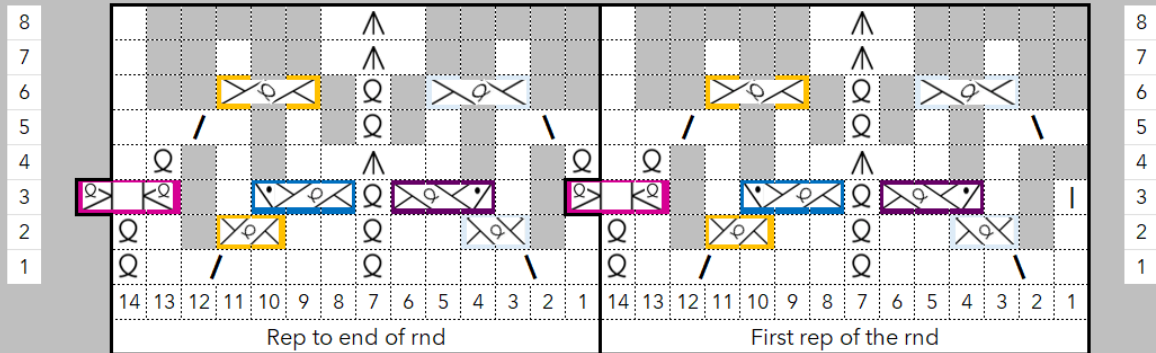


CABLE CHART 3




	P1		Sl 1 purlwise
	K1 tbl		Right leaning dec: cross sts as if to C2B; K2 tog tbl.
	C2B: 1st st on LN crosses behind 2nd st (work sts as K1 tbl, P1).		Left leaning dec: K2 tog tbl.
	C2F: 1st st on LN crosses in front of 2nd st (work sts as P1, K1 tbl).		C3B with dec: 1st and 2nd sts on LN cross behind 3rd st (work sts as K1 tbl, P2tog).
	C3B: 1st and 2nd sts on LN cross behind 3rd st (work sts as K1 tbl, P2).		C3F with dec: 1st st on LN crosses in front of 2nd and 3rd sts (work sts as P2tog , K1 tbl).
	C3F: 1st st on LN crosses in front of 2nd and 3rd sts (work sts as P2, K1 tbl).		C3C: 1st and 3rd sts on LN cross behind 2nd st (work sts as K3 tbl).
	C3C: 1st and 3rd sts on LN cross behind 2nd st (work sts as K2 tbl, P1).		C3C: 1st and 3rd sts on LN cross behind 2nd st (work sts as K1 tbl, P1, K1 tbl).
	C3C: 1st and 3rd sts on LN cross behind 2nd st (work sts as P1, K2 tbl).		
	C3C: 1st and 3rd sts on LN cross behind 2nd st (work sts as P1, K1 tbl, P1).		

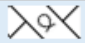
CABLE CHART 4




 P1


 K1 tbl


 C2B: 1st st on LN crosses behind 2nd st (work sts as K1 tbl, P1).


 C2F: 1st st on LN crosses in front of 2nd st (work sts as P1, K1 tbl).


 Centred double dec: sl 1st st from LN to RN purlwise; sl next st from LN to RN as if to Ptbl; return sl sts to LN purlwise; sl 2 sts tog from LN to RN knitwise, K1, p2sso.


 Sl 1 purlwise

 Right leaning dec: cross sts as if to C2B; K2 tog tbl.

 Left leaning dec: K2 tog tbl.

 C3B with dec: 1st and 2nd sts on LN cross behind 3rd st (work sts as K1 tbl, **P2tog**).

 C3F with dec: 1st st on LN crosses in front of 2nd and 3rd sts (work sts as **P2tog**, K1 tbl).

 C3C: 1st and 3rd sts on LN cross behind 2nd st (work sts as K1 tbl, P1, K1 tbl).

