

# CAT COWL

---

by BRIANA  
ARLENE



## THE DESIGN

Möbius cowl featuring cat-themed allover colorwork.

## THE YARN

Sport weight in two colors.

## THE SKILLS

Provisional cast-on, stranded colorwork, ladderback jacquard (optional), chart reading, grafting stitches together.

## THE CARD

- Judgement - Enlightenment, reckoning, reincarnation.

## THE CALL

Reflect on what you might judge too harshly in others and how this may be a mirror to your inner judgement.



**THIS DESIGN IS FOR** all my fellow cat lovers! While I've always adored animals of every kind, cats will forever hold a special place in my heart—and this design celebrates them with a bold Gesalt-style cat motif (first seen in my [Cat Hat](#)) reimagined for a Möbius cowl.

To knit my sample, I used the ladderback jacquard technique to manage the longer floats in the colorwork. The charts include placements for

ladderback columns if you'd like to follow suit. Of course, you can always catch your floats in the traditional way—but in the playful spirit of this design, I encourage you to experiment! If ladderback jacquard is new to you, don't be intimidated—it's easier than it looks, and once you try it, you'll discover just how many creative doors it opens for your future colorwork projects.



## SIZES

One size

## FINISHED CIRCUMFERENCE

*The circumference as measured around the neck opening is as follows.*

27 in. (67.5 cm)

## YARN

### Sport weight

**C1:** 90 g/295 yds or 270 m

**C2:** 90 g/295 yds or 270 m

## SUGGESTED YARN

Sonder Yarn Co. Sunday Morning Lux Sport (100 g/328 yds (300 m)) – 65% Bluefaced Leicester, 25% Masham, 10% Cashmere

**C1:** 1 skein

**C2:** 1 skein

*The sample cowl is knit in the colorways Crossword (C1) and Offline (C2).*

## NEEDLES

US 5 (3.75 mm)

You will need 32 in. (80 cm) circular needles to work in the round using the magic loop method, or your preferred needles for smaller circumference knitting, such as short circular or double-pointed needles.

*Use the needle size you need to achieve gauge.*

## NOTIONS

Stitch markers, row counter, scrap yarn, tapestry needle, scissors

## GAUGE

*Measure gauge knit in the round, after blocking.*

26 sts and 25 rows = 4 in. (10 cm) in stranded colorwork

## NOTES

- **Design & Construction:** The Cat Cowl is a Möbius-style cowl featuring a whimsical cat-themed colorwork motif. It begins with a provisional cast-on, and the body is worked in the round using stranded colorwork. A single twist creates the signature Möbius shape, after which the provisional cast-on stitches are grafted to the final round in pattern, forming a seamless, one-sided join.
- **Ladderback Jacquard:** This pattern provides optional instructions for ladderback jacquard to manage longer colorwork floats. While you can always catch floats the traditional way, ladderback jacquard is a great technique when you have multiple, sequential rows or rounds with large floats.
- **Stitch Patterns:** The stranded colorwork in this cowl is only charted, so you should be confident in your chart reading skills—or be open to learning!

## SKILLS TO USE (OR LEARN)

Provisional cast-on, stranded colorwork, ladderback jacquard (optional), chart reading, grafting stitches together



## TUTORIALS

The following tutorials may be helpful if these techniques are new to you—or if you just need a refresher!

- [One-step provisional cast-on](#) | Purl Soho
- [Trapping long floats in colorwork](#) | Brooklyn Tweed
- [Ladderback jacquard](#) | Knit Darling
- [Grafting stitches together](#) | Tin Can Knits



## INSTRUCTIONS

With waste yarn, CO 112 sts using the one-step provisional CO method. For a video tutorial on this method, see **Tutorials** in the left column.

Place a marker to indicate the BOR and join to work in the round.

**Special Note on Cast-On Method:** If you're an experienced knitter, you may be tempted to substitute a different provisional cast-on method. For this pattern, however, I recommend sticking with the one specified—this one makes it easiest to begin working in stranded colorwork on the very first round.

### Body

Joining C1 and C2, work the **Cat Colorwork chart** on [page 6](#), repeating the 28-st chart motif 4 times across each round.

- Work the full chart (Rnds 1–28) a total of 5 times.
- Then, work Rnds 1–27 once *more*.
- On Rnd 27, resolve the ladderback jacquard sts as instructed.

In total, you will have completed 6 full chart repeats minus the final round.

**Special Note on Managing Long Floats:** This cowl include long floats—with some rounds spanning up to 14 stitches between color changes. To manage them, you can either catch floats as you knit or use the ladderback jacquard technique for a smoother interior finish.

The colorwork charts include suggested ladderback stitch placements if you choose to use this method. If ladderback jacquard is new to you, refer to the **Tutorials** section above for a link to a video tutorial. If you haven't tried ladderback jacquard before, it's surprisingly simple once you get the hang of it, and it opens a whole new world of options in your colorwork!

## ABBREVIATIONS

<b>BOR</b>	beginning of row/round
<b>C1, C2</b>	color 1, color 2
<b>CO</b>	cast on
<b>k</b>	knit
<b>LJ</b>	ladderback jacquard
<b>st(s)</b>	stitch(es)



## Blocking

You will break your yarn and block your cowl before completing the bind-off.

First, decide which seaming method you'd like to use (see **Special Note on Seaming** below) so you can break your yarns accordingly. If you're unsure, leave generous tails on both yarns—you can always decide later!

**Method 1 (Advanced):** Break both C1 and C2, leaving tails about 3.5 times the circumference of the cowl.

**Method 2 (Simpler):** Break the darker color and weave in this end. Break the lighter color, leaving a tail about 3.5 times the circumference of the cowl.

Once your yarns are broken, place all live stitches on waste yarn. Weave in any loose ends, leaving the long tails free for seaming.

Wet block cowl by soaking it in a lukewarm bath with wool wash for at least 15 minutes. Remove from bath and gently squeeze out excess water. Sandwich between clean towels, roll into a tube, and press firmly to remove as much moisture as possible without distorting the fabric. (Feel free to step on the towels—I always do!) Lay cowl flat to dry.

**Special Note on Seaming:** To finish your cowl, you will graft the two ends together so the pattern flows seamlessly. There are two approaches you can take, depending on your comfort level:

- **Method 1 (Advanced):** Graft the stitches together in the established colorwork pattern, using both C1 and C2. This creates the most seamless result but requires careful attention.
- **Method 2 (Simpler):** Graft the stitches together using just one color. Afterwards, use duplicate stitch with the second color to fill in the pattern. This method is easier to manage and still produces a polished finish.





## Bind-off

Return 112 stitches from waste yarn to needles.

Unzip the provisional CO and return 112 sts to a spare needle.

Give your cowl a single twist lengthwise to form the Möbius shape. Then, secure the two live edges together with several removable stitch markers—just as you would pin fabric before sewing. This will hold the twist in place and keep the shape intact while you prepare for the bind-off.

**Method 1 (Advanced):** With remaining yarn tails, bind off all sts by grafting them together in the following sequence: \*graft 12 sts together in C2, graft 12 sts together in C1. Repeat from \* around, being careful to create appropriately tensioned floats as you switch between colors. Break yarn and pull remaining tail to inside of cowl.

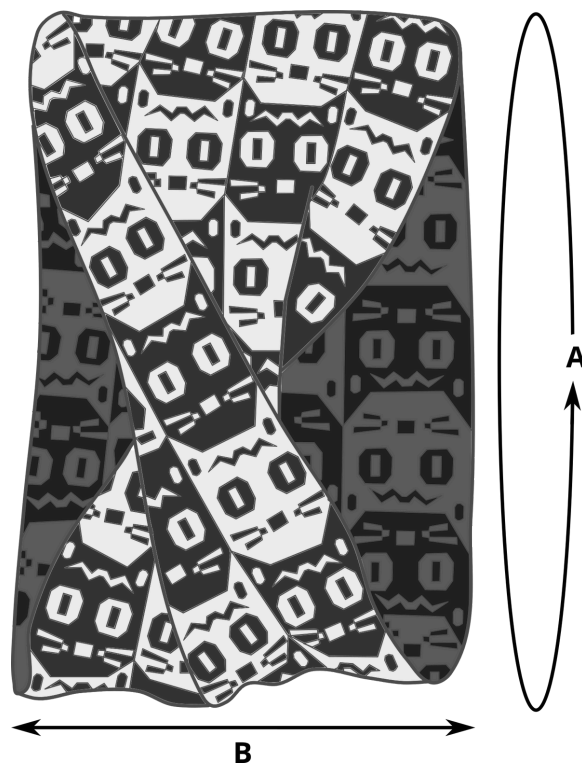
**Method 2 (Simpler):** With remaining yarn tail, graft sts together in the lighter of your two colors. Break yarn and pull tail to inside of cowl.

With darker of your two colors, duplicate stitch in pattern following the color sequence in Row 28 of the **Cat Colorwork chart** on [page 6](#).

## Finishing

Give the seam line a light steam block to help the stitches relax and create a smooth, seamless finish.

## SCHEMATIC



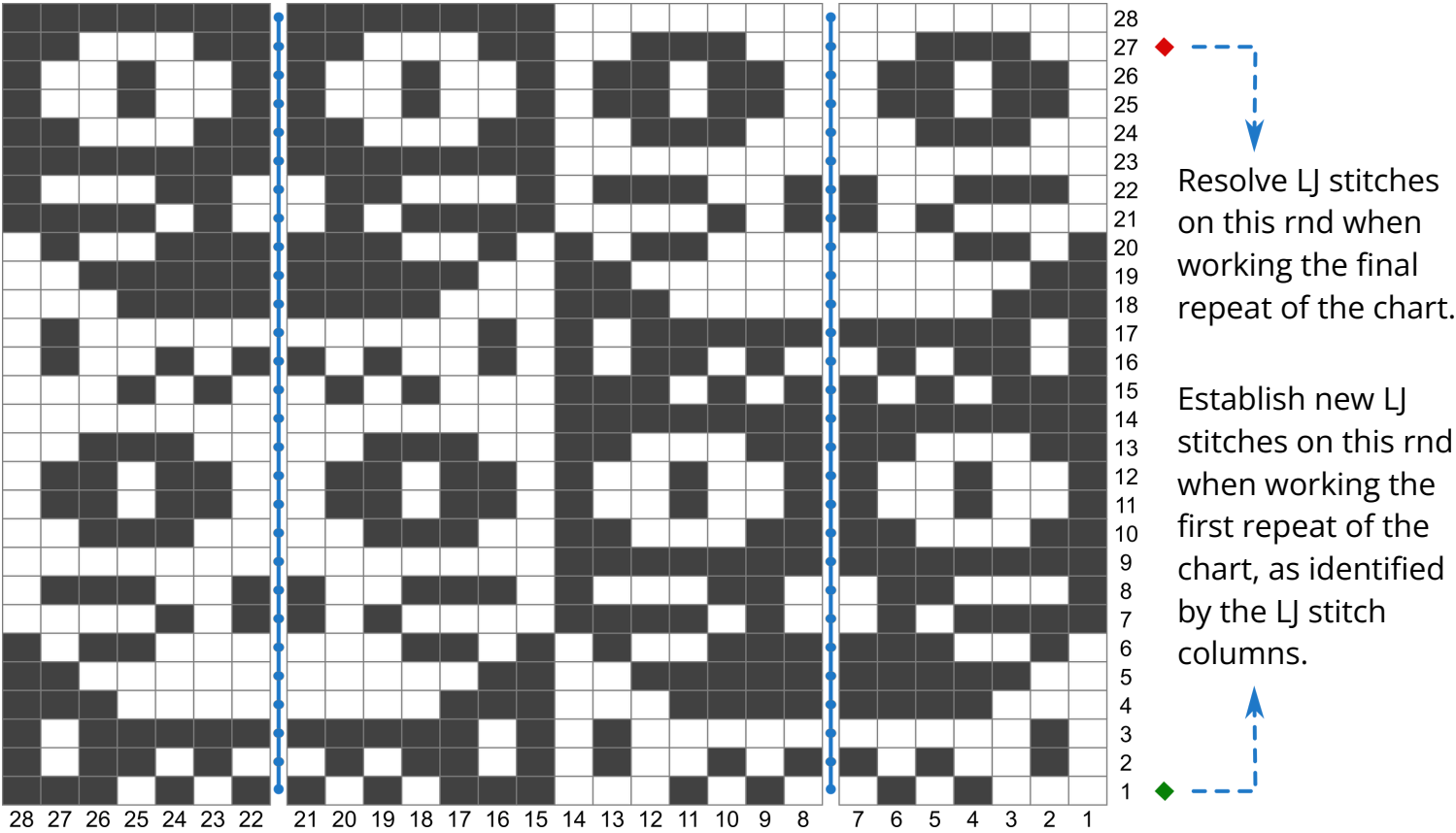
## FINISHED MEASUREMENTS

Neck circumference A	in.	27
	cm	67.5
Width B	in.	8.5
	cm	21.5



CHARTS

Cat Colorwork



**KEY**

SYMBOLS    COLORS    LADDERBACK JACQUARD

k

C1

C2

LJ stitch column

← resolve LJ stitch

← work LJ stitch

← create new LJ stitch





## CONNECT & SHARE



If you share photos on social media, be sure to tag me and use the hashtags below. It makes my day to see your in-progress projects and finished objects!

[@brianaarlene](https://www.instagram.com/brianaarlene)

[#BrianaArleneKnits](https://www.instagram.com/BrianaArleneKnits)

[#CatCowl](https://www.instagram.com/CatCowl)

## CONTACT & SUPPORT



Questions as you're knitting? Get in touch. I'd love to help you create a garment you truly adore!

[briana@brianaarleneknits.com](mailto:briana@brianaarleneknits.com)



Sign up to receive news on pattern releases, events & other updates

Cat Cowl ©2025 Briana Arlene. All rights reserved.

Pattern photography by Alton Richardson Studios.

*In purchasing this pattern, you agree to print and use this pattern and the items made from it only for your personal non-commercial use. You may not distribute or sell electronic or paper copies of this pattern or parts of this pattern.*

Pattern Version 1.0 | November 2025

# DID YOU ENJOY THIS PATTERN?



You might also like:

Cat Tarot Mittens



colorwork mittens featuring a mystical, cat-themed tarot card motif

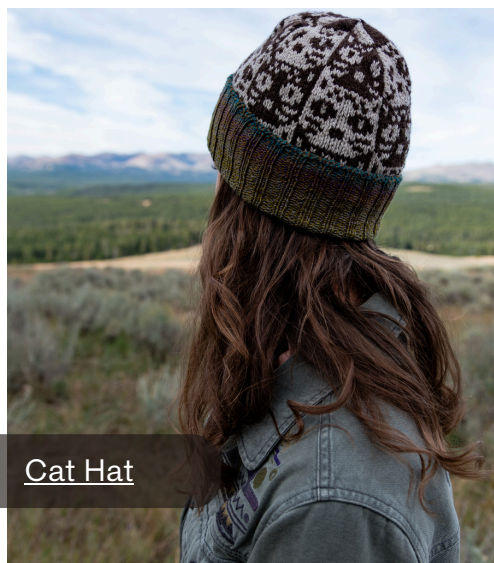
Patterns available on [Ravelry](https://www.ravelry.com)

Would you like to see more patterns in the **Cat series?**

Drop me a line and let me know!

[briana@brianaarleneknits.com](mailto:briana@brianaarleneknits.com)

Cat Hat



bottom-up hat featuring 2x2 ribbing and cat-themed allover colorwork

Kindred Cowl



tubular cowl worked in 2-color stranded colorwork with twisted ribbed edging