



quince&co.



capella

designed by isabell kraemer

Capella Shawl

Isabell Kraemer

Soothing garter stitch borders an easy and delicate lace pattern in Capella, a traditional triangle shawl. Silk and wool Tern lends lightweight warmth, drape and shimmer. Repeats can be added or removed to customize the size, or you can go big with Owl or Osprey for a more substantial, sturdy piece.

Finished measurements

76" [193 cm] wingspan and 34" [86.5 cm] deep at center spine

Yarn

Tern by Quince & Co

(75% American wool, 25% silk; 221yd [202m]/50g)

- 5 skeins Stonington 412

Needles

- One 32" circular needle in size US 6 [4 mm]

Or size to obtain gauge

Notions

- Stitch markers
- Tapestry needle

Gauge

16 sts and 32 rows = 4" [10 cm] in lace pattern, after wet-blocking.

Special abbreviations:

yo (yarn over): Bring yarn between needles to the front, then over RH needle ready to knit the next stitch (1 stitch increased).

s2kp (central double decrease): Slip 2 stitches together knitwise to the RH needle, k1, pass 2 slipped stitches over knit stitch (2 stitches decreased).

ssk (slip, slip, knit): Slip 2 stitches one at a time knitwise to the RH needle; return stitches to LH needle in turned position and knit them together through the back loops (1 stitch decreased, leans to the left).

k2tog: Knit 2 stitches together (1 stitch decreased, leans to the right).

M1R (make 1 right slanting): Insert LH needle from back to front under horizontal strand between stitch just worked and next stitch, knit lifted strand through the front loop (1 stitch increased).

M1L (make 1 left slanting): Insert LH needle from front to back under horizontal strand between stitch just worked and next stitch, knit lifted strand through the back loop (1 stitch increased).

Right lace pattern (multiple of 8 sts)

See also chart, page 4.

Row 1: (RS) *K3, yo, s2kp, yo, k2; rep from * to end.

Row 2: Purl.

Row 3: *Yo, ssk, p5, k1; rep from *.

Row 4: *P1, k5, p2; rep from *.

Row 5: *K1, yo, ssk, p3, k2tog, yo; rep from *.

Row 6: *P2, k3, p3; rep from *.

Row 7: *K2, yo, ssk, p1, k2tog, yo, k1; rep from *.

Row 8: *P3, k1, p4; rep from *.

Repeat Rows 1-8 for right lace pattern.

Left lace pattern (multiple of 8 sts)

See also chart, page 4.

Row 1: (RS) *K2, yo, s2kp, yo, k3; rep from *.

Row 2: Purl.

Row 3: *K1, p5, k2tog, yo; rep from *.

Row 4: *P2, k5, p1; rep from *.

Row 5: *Yo, ssk, p3, k2tog, yo, k1; rep from *.

Row 6: *P3, k3, p2; rep from *.

Row 7: *K1, yo, ssk, p1, k2tog, yo, k2; rep from *.

Row 8: *P4, k1, p3; rep from *.

Repeat Rows 1-8 for left lace pattern.

Garter stitch

Knit every row.

Helpful link

For instructions on the **long-tail cast on**, we like:

www.knitty.com/ISSUEsummer05/FEATsum05TT.html

Notes

1. Shawl is knitted flat, from center of back neck down, beginning with a garter stitch tab. Stitches are increased at each side and on either side of a center spine stitch every RS row. Stitches are worked in lace pattern to center spine, then worked in a reflection of that pattern to end.
2. Wet-blocking is recommended for this piece.

Shawl

Using the long-tail cast on, CO 3 sts.

Begin garter tab

First row: (RS) Knit.

Work 6 more rows in garter st.

After last row, do not turn work, but pick up and knit 3 sts down the left side of the fabric (one st in each garter ridge), then pick up and knit 3 sts in CO edge (one st in each CO st)—9 sts on needle.

Set up row place markers: (WS) K3, place marker (pm), p1, pm, p1, pm, p1, pm, k3.

Begin shawl set up

See also chart, page 4.

Row 1 inc row: (RS) K3, slip marker (sl m), yo, k1, yo, sl m, k1, sl m, yo, k1, yo, sl m, k3 (4 sts inc'd)—13 sts.

Row 2 and all WS rows: K3, sl m, purl to last marker (m), sl m, k3.

Row 3: K3, sl m, yo, k1, yo, ssk, yo, sl m, k1, sl m, yo, k2tog, yo, k1, yo, sl m, k3 (4 sts inc'd)—17 sts.

Row 5: K3, sl m, yo, k2tog, yo, k1, yo, ssk, yo, sl m, k1, sl m, yo, k2tog, yo, k1, yo, ssk, yo, sl m, k3 (4 sts inc'd)—21 sts.

Row 7: K3, sl m, yo, k2tog, yo, k3, yo, ssk, yo, sl m, k1, sl m, yo, k2tog, yo, k3, yo, ssk, yo, sl m, k3 (4 sts inc'd)—25 sts.

Row 8: (WS) Rep Row 2.

Begin lace pattern

See also chart, page 4.

Row 1 inc row: (RS) K3, sl m, yo, work Row 1 of right lace patt to 1 st before m, k1, yo, sl m, k1, sl m, yo, k1, work Row 1 of left lace patt to 1 st before m, yo, sl m, k3 (4 sts inc'd)—29 sts.

Row 2: K3, sl m, purl to last m, sl m, k3.

Row 3: K3, sl m, yo, k1, work Row 3 of right lace patt to 2 sts before m, yo, ssk, yo, sl m, k1, sl m, yo, k2tog, yo, work Row 3 of left lace patt to 1 st before m, k1, yo, sl m, k3 (4 sts inc'd)—33 sts.

Row 4: K3, sl m, p2, work Row 4 of left lace patt to 3 sts before m, p3, sl m, p1, sl m, p3, work Row 4 of right lace patt to 2 sts before m, p2, sl m, k3.

Row 5: K3, sl m, yo, k2tog, yo, work Row 5 of right lace patt to 3 sts before m, k1, yo, ssk, yo, sl m, k1, sl m, yo, k2tog, yo, k1, work Row 5 of left lace patt to 2 sts before m, yo, ssk, yo, sl m, k3 (4 sts inc'd)—37 sts.

Row 6: K3, sl m, p3, work Row 6 of left lace patt to 4 sts before m, p4, sl m, p1, sl m, p4, work Row 6 of right lace patt to 3 sts before m, p3, sl m, k3.

Row 7: K3, sl m, yo, k2tog, yo, k1, work Row 7 of right lace patt to 4 sts before m, k2, yo, ssk, yo, sl m, k1, sl m, yo, k2tog, yo, k2, work Row 7 of left lace patt to 3 sts before m, k1, yo, ssk, yo, sl m, k3 (4 sts inc'd)—41 sts.

Row 8: K3, sl m, p4, work Row 8 of left lace patt to 5 sts before m, p5, sl m, p1, sl m, p5, work Row 8 of right lace patt to 4 sts before m, p4, sl m, k3.

Rep the last 8 rows 18 more times—329 sts on needle.

Begin trim

Next row inc row: (RS) K3, sl m, yo, knit to next m, M1R, sl m, k1, sl m, M1L, knit to next m, yo, sl m, k3 (4 sts inc'd)—333 sts.

Next row: Knit.

Rep the last 2 rows 23 more times—425 sts.

Next row: (RS) Bind off loosely knitwise.

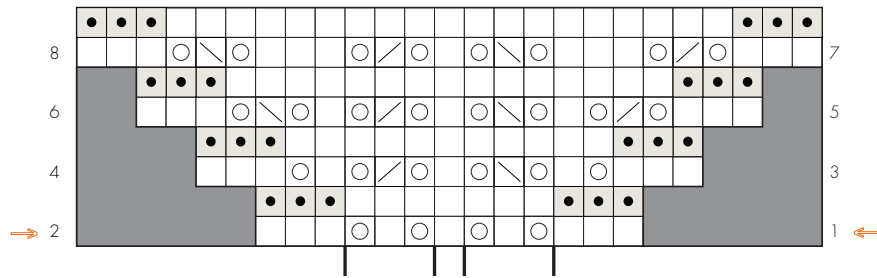
Finishing

Weave in ends. Wet-block shawl to finished measurements.

Standard abbreviations

CO	cast on
cm	centimeter(s)
g	gram(s)
inc('d)	increase(d)
k	knit
LH	left hand
mm	millimeter(s)
m(s)	marker(s)
p	purl
patt(s)	pattern(s)
pm	place marker
rep	repeat(ing); repeat(s)
RH	right hand
RS	right side
sl m	slip marker
st(s)	stitch(es)
WS	wrong side
yd	yard(s)

Lace set up pattern



Key

- knit on RS, purl on WS
- purl on RS, knit on WS
- yo
- k2tog
- ssk
- s2kp
- no stitch
- pattern repeat

Lace pattern

