

# CAMP WILKERSON

BY CAITLIN HUNTER





# CAMP WILKERSON

## MATERIALS

### Yarn:

4 colors of DK weight yarn, appx 200 yards (100g) of each.

Sample uses one skein each of Little Fox Yarn Splendid DK (a 40% baby alpaca, 40% merino, 20% silk single) in

Color A: Smudge (dark grey)

Color B: Demelza (gold)

Color C: Petal (pale pink)

Color D: Vardo (blue)

### Needles:

Size US 6/4.0mm circular or straight needles long enough to accomodate 132 sts. Shawl is knitted flat.

### Other Notions:

Tapestry needle, scissors, stitch markers, blocking pins and wires

### Finished Dimensions:

70" long and 19" wide

### Gauge in Stockinette :

21 sts and 31 rows over 4" (measured after blocking)



## NOTES:

*This asymmetrical, arrow-shaped wrap is worked from end to end, starting at the arrow point. Paired increases and decreases on every right side row give this cozy shawl its unique shape. Have fun playing with color combinations on the coloring sheet included on the last page of the pattern to create your own signature statement piece.*

## ABBREVIATIONS:

CO: cast on

k: knit

k2tog: knit 2 together

k2togtbl: knit 2 together through the back loop

m: stitch marker

m1L: Make one left increase. Make one stitch by lifting bar between stitches from front to back with the left needle and then knitting through the back of it with the right needle.

m1R: Make one right increase. Make one stitch by lifting bar between stitches from back to front with the left needle and then knitting through the front of it with the right needle.

p: purl

pm: place marker

rep: repeat

RS: right side

sm: slip marker

st(s): stitches

WS: wrong side

yo: yarn over

# CAMP WILKERSON



## DIRECTIONS:

### GARTER BAND 1:

With Color A CO 132 sts.

Row 1 (WS): P4, pm, k50, pm, p4, pm, k70, pm, p4.

Row 2 (RS): K4, sm, m1L, k to 2 sts before m, k2togtbl, sm, k4, sm, k2tog, k to m, m1R, sm, k4.

Row 3: P4, sm, k to m, sm, p4, sm, k to m, sm, p4.

Repeat Rows 2 and 3 six (6) more times.

### STOCKINETTE BAND 1:

Switch to Color B.

Row 1 (RS): K4, sm, m1L, k to 2 sts before m, k2togtbl, sm, k4, sm, k2tog, k to m, m1R, sm, k4.

Row 2: P all sts

Repeat Rows 1 and 2 nineteen (19) more times. (40 rows total)

### GARTER BAND 2:

Switch to Color A.

Row 1 (RS): K4, sm, m1L, k to 2 sts before m, k2togtbl, sm, k4, sm, k2tog, k to m, m1R, sm, k4.

Row 2: P4, sm, k to m, sm, p4, sm, k to m, sm, p4.

Repeat Rows 1 and 2 three (3) more times.

Repeat Row 1 once more.

### STOCKINETTE STRIPE 1:

Switch to Color C.

Row 1 (WS): P all sts.

Row 2: K4, sm, m1L, k to 2 sts before m, k2togtbl, sm, k4, sm, k2tog, k to m, m1R, sm, k4.

Repeat Rows 1 and 2 five (5) more times.

Repeat Row 1 once more.

### GARTER BAND 3:

Switch to color A.

Row 1 (RS): K4, sm, m1L, k to 2 sts before m, k2togtbl, sm, k4, sm, k2tog, k to m, m1R, sm, k4.

Row 2: P4, sm, k to m, sm, p4, sm, k to m, sm, p4.

Repeat Rows 1 and 2 three (3) more times.

Repeat Row 1 once more.

### STOCKINETTE STRIPE 2:

Switch to Color C.

Row 1 (WS): P all sts.

Row 2: K4, sm, m1L, k to 2 sts before m, k2togtbl, sm, k4, sm, k2tog, k to m, m1R, sm, k4.

Repeat Rows 1 and 2 five (5) more times.

Repeat Row 1 once more.

### GARTER BAND 4:

Switch to color A.

Row 1 (RS): K4, sm, m1L, k to 2 sts before m, k2togtbl, sm, k4, sm, k2tog, k to m, m1R, sm, k4.

Row 2: P4, sm, k to m, sm, p4, sm, k to m, sm, p4.

Repeat Rows 1 and 2 three (3) more times.

Repeat Row 1 once more.

### STOCKINETTE STRIPE 3:

Switch to Color C.

Row 1 (WS): P all sts.

Row 2: K4, sm, m1L, k to 2 sts before m, k2togtbl, sm, k4, sm, k2tog, k to m, m1R, sm, k4.

Repeat Rows 1 and 2 five (5) more times.

Repeat Row 1 once more.

# CAMP WILKERSON

## GARTER BAND 5:

Switch to color A.

Row 1 (RS): K4, sm, m1L, k to 2 sts before m, k2togtbl, sm, k4, sm, k2tog, k to m, m1R, sm, k4.

Row 2: P4, sm, k to m, sm, p4, sm, k to m, sm, p4.

Repeat Rows 1 and 2 three (3) more times.

Repeat Row 1 once more.

## CENTER EYELET SECTION:

Switch to Color D.

Row 1 (WS): P all sts.

Row 2: K4, sm, m1L, k to 2 sts before m, k2togtbl, sm, k4, sm, k2tog, k to m, m1R, sm, k4.

Row 3: P all sts.

Row 4: K4, sm, m1L, k1, \*yo, k2togtbl, k3; rep from \* to last 4 sts before m, yo, k2togtbl, k2togtbl, sm, k4, sm, k2tog, \*k2tog, yo, k3; rep from \* to last 3 st before m, k2tog, yo, k1, m1R, sm, k4.

Repeat Rows 1-4 nineteen (19) more times. (20 rows of eyelet total)

Work Rows 1-3 once more.

## GARTER BAND 6:

Switch to color A.

Row 1 (RS): K4, sm, m1L, k to 2 sts before m, k2togtbl, sm, k4, sm, k2tog, k to m, m1R, sm, k4.

Row 2: P4, sm, k to m, sm, p4, sm, k to m, sm, p4.

Repeat Rows 1 and 2 three (3) more times.

Repeat Row 1 once more.

## STOCKINETTE STRIPE 4:

Switch to Color C.

Row 1 (WS): P all sts.

Row 2: K4, sm, m1L, k to 2 sts before m, k2togtbl, sm, k4, sm, k2tog, k to m, m1R, sm, k4.

Repeat Rows 1 and 2 five (5) more times.

Repeat Row 1 once more.

## GARTER BAND 7:

Switch to color A.

Row 1 (RS): K4, sm, m1L, k to 2 sts before m, k2togtbl, sm, k4, sm, k2tog, k to m, m1R, sm, k4.

Row 2: P4, sm, k to m, sm, p4, sm, k to m, sm, p4.

Repeat Rows 1 and 2 three (3) more times.

Repeat Row 1 once more.

## STOCKINETTE STRIPE 5:

Switch to Color C.

Row 1 (WS): P all sts.

Row 2: K4, sm, m1L, k to 2 sts before m, k2togtbl, sm, k4, sm, k2tog, k to m, m1R, sm, k4.

Repeat Rows 1 and 2 five (5) more times.

Repeat Row 1 once more.

## GARTER BAND 8:

Switch to color A.

Row 1 (RS): K4, sm, m1L, k to 2 sts before m, k2togtbl, sm, k4, sm, k2tog, k to m, m1R, sm, k4.

Row 2: P4, sm, k to m, sm, p4, sm, k to m, sm, p4.

Repeat Rows 1 and 2 three (3) more times.

Repeat Row 1 once more.

## STOCKINETTE STRIPE 6:

Switch to Color C.

Row 1 (WS): P all sts.

Row 2: K4, sm, m1L, k to 2 sts before m, k2togtbl, sm, k4, sm, k2tog, k to m, m1R, sm, k4.

Repeat Rows 1 and 2 five (5) more times.

Repeat Row 1 once more.

## GARTER BAND 9:

Switch to color A.

Row 1 (RS): K4, sm, m1L, k to 2 sts before m, k2togtbl, sm, k4, sm, k2tog, k to m, m1R, sm, k4.

Row 2: P4, sm, k to m, sm, p4, sm, k to m, sm, p4.

Repeat Rows 1 and 2 three (3) more times.

Repeat Row 1 once more.

## STOCKINETTE STRIPE 7:

Switch to Color C.

Row 1 (WS): P all sts.

Row 2: K4, sm, m1L, k to 2 sts before m, k2togtbl, sm, k4, sm, k2tog, k to m, m1R, sm, k4.

Repeat Rows 1 and 2 five (5) more times.

Repeat Row 1 once more.



# CAMP WILKERSON

## GARTER BAND 10:

Switch to color A.

Row 1 (RS): K4, sm, m1L, k to 2 sts before m, k2togtbl, sm, k4, sm, k2tog, k to m, m1R, sm, k4.

Row 2: P4, sm, k to m, sm, p4, sm, k to m, sm, p4.

Repeat Rows 1 and 2 three (3) more times.

Repeat Row 1 once more.

## STOCKINETTE BAND 2:

Switch to Color B.

Row 1 (WS): P all sts.

Row 2: K4, sm, m1L, k to 2 sts before m, k2togtbl, sm, k4, sm, k2tog, k to m, m1R, sm, k4.

Repeat Rows 1 and 2 nineteen (19) more times. (40 rows total)

## GARTER BAND 11:

Switch to Color A.

Row 1 (WS): P4, sm, k to m, sm, p4, sm, k to m, sm, p4.

Row 2: K4, sm, m1L, k to 2 sts before m, k2togtbl, sm, k4, sm, k2tog, k to m, m1R, sm, k4.

Repeat Rows 1 and 2 six (6) more times.

Bind off in pattern.

## FINISHING:

Weave in ends.

Block to measurements and enjoy!

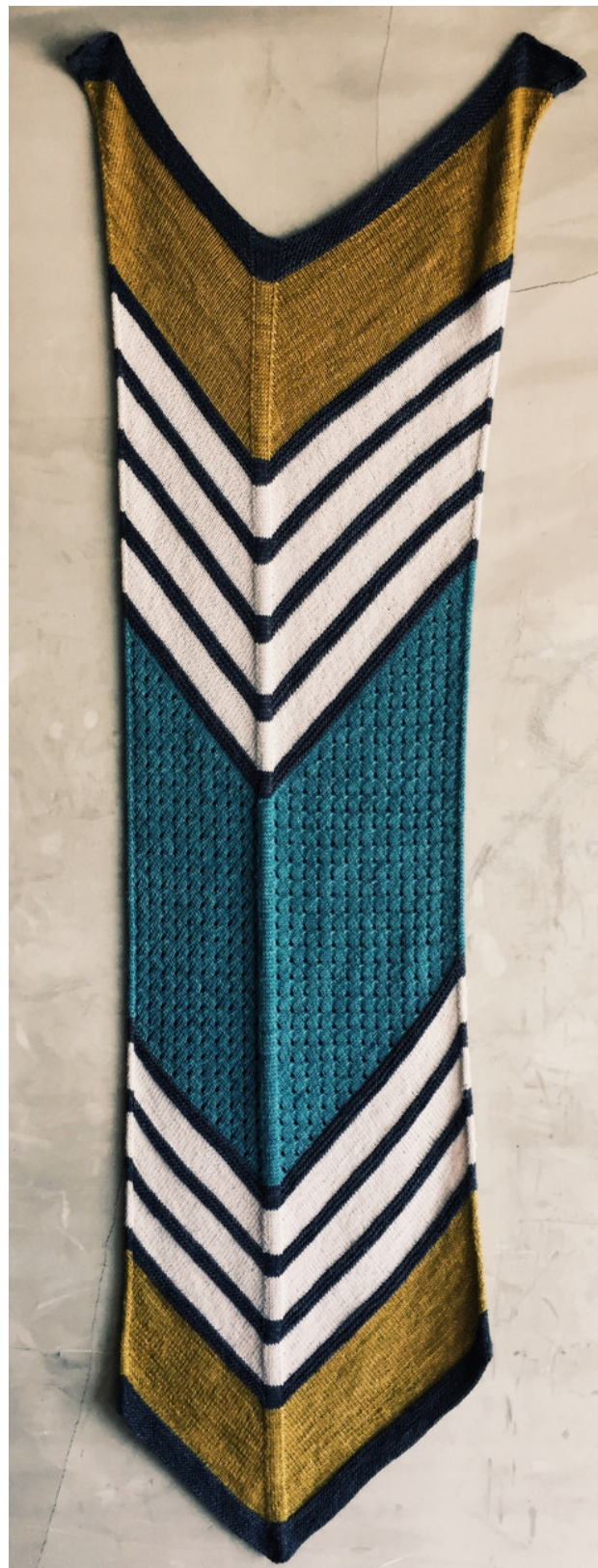
*Have fun playing with your own color combinations and arrangements on the coloring sheet on the following page. Please note that this pattern was designed to use nearly one entire skein of each color, so make sure you place your color choices in the same order as noted. Of course you may choose to use any colors you like in any order, but your yardage will change if you do! Sample uses the colors in the following positions:*

*Color A: Dark Grey*

*Color B: Gold*

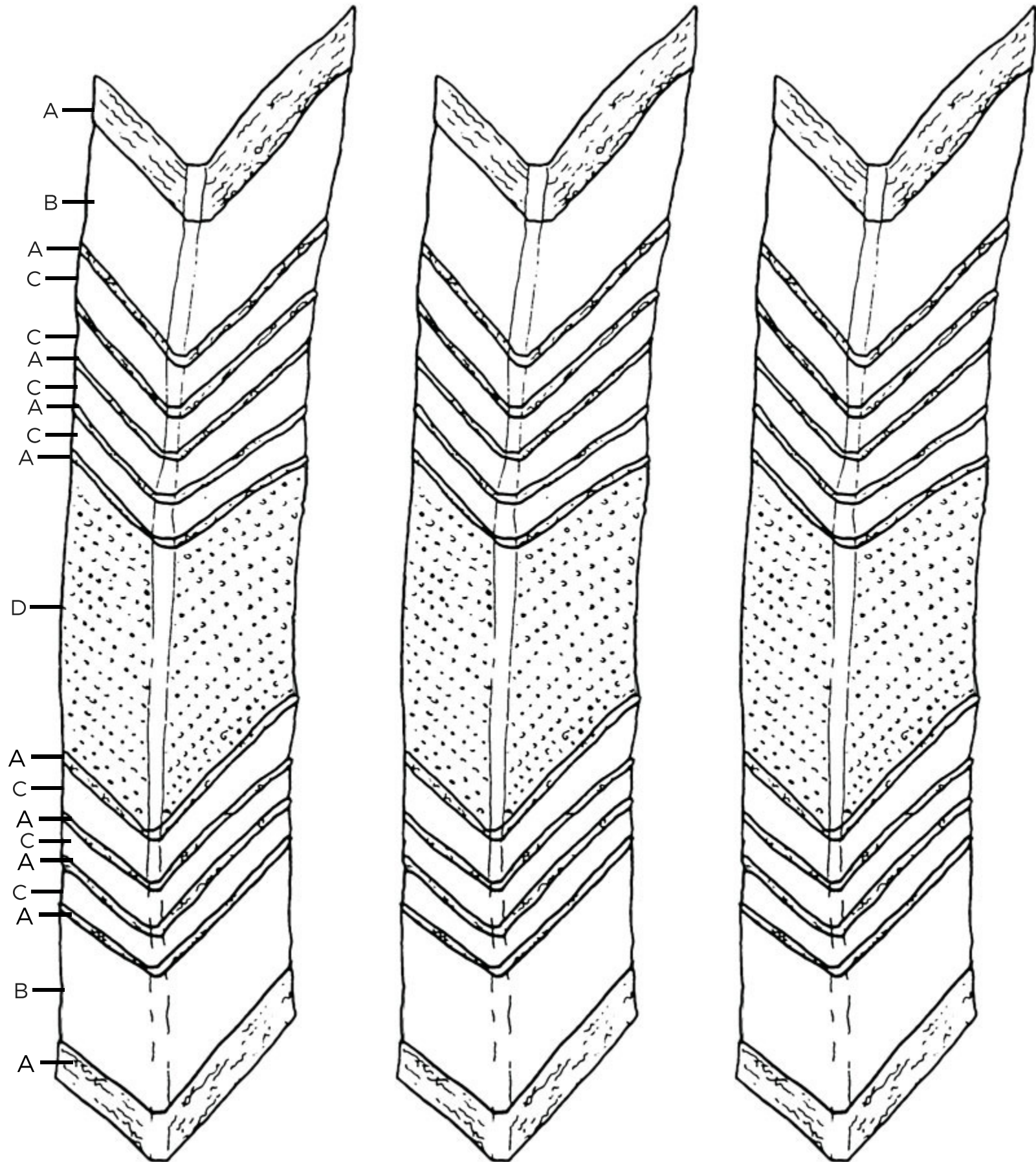
*Color C: Petal*

*Color D: Blue*



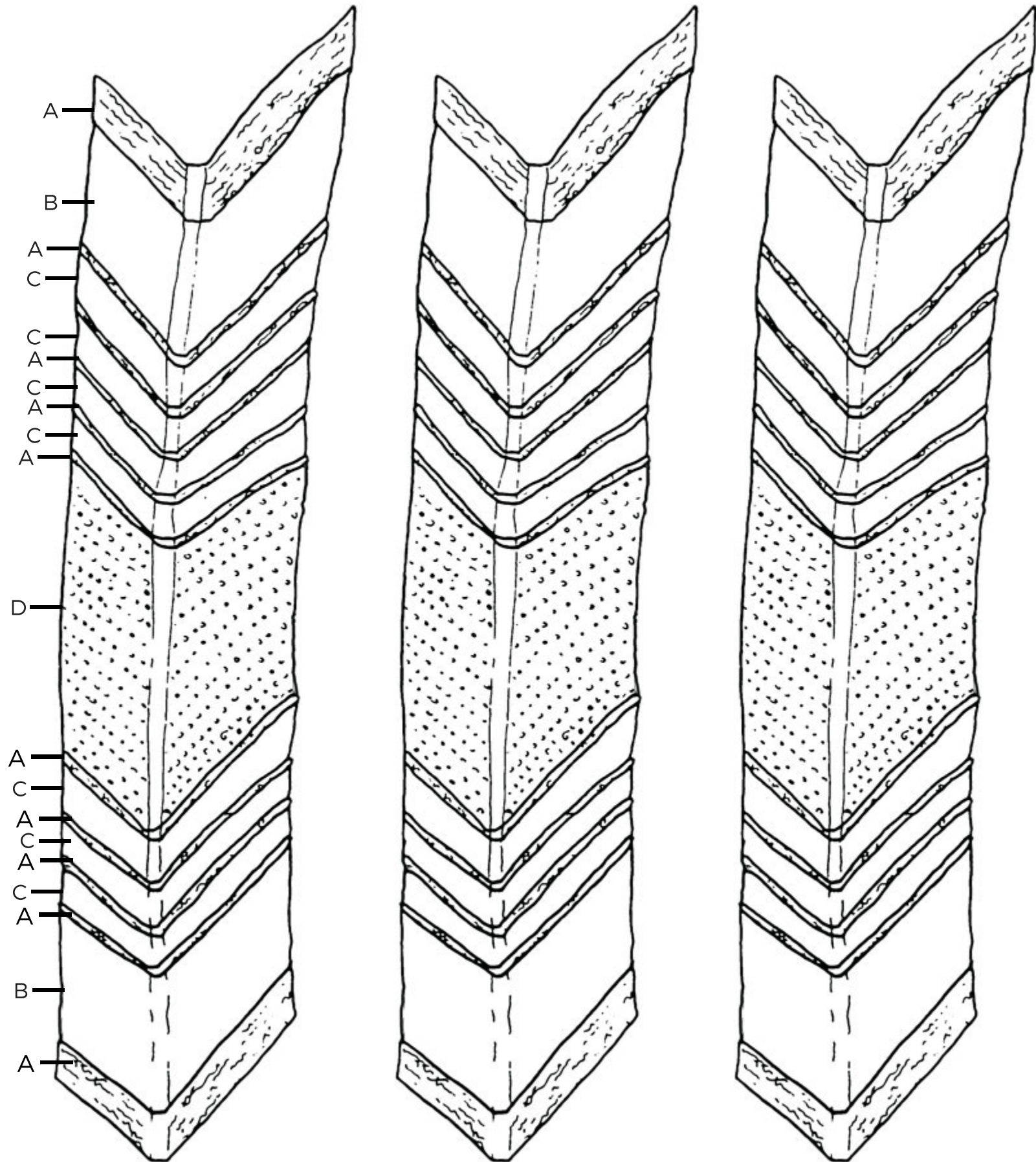
# CAMP WILKERSON

coloring sheet



# CAMP WILKERSON

coloring sheet





# CAMP WILKERSON



For pattern support, contact the designer at  
[boylandknitworks@gmail.com](mailto:boylandknitworks@gmail.com)

Find more designs by Caitlin Hunter at  
[www.boylandknitworks.com](http://www.boylandknitworks.com)

On Ravelry as: [boylandknitworks](#)

Follow me on Instagram: [boylandknitworks](#)

Share your finished objects and see others on social  
media with the tags [#boylandknitworks](#) and  
[#campwilkersonshawl](#)

Thank you for supporting independent design!

