



Bullseye Diamonds Hat by Irina Shaar

Experience Level: Beginner

Techniques Used: German Twisted Cast On, Knit, Purl, Single and Double Decreases, Yarnovers

Yarn: Purl Soho Plein Air in color Teal Verdigris 100 grams, 218 yards

Needles: 4 mm (US size 6) 16" (40 cm) circular needles for ribbing
4.5 mm (US size 7) 16" (40 cm) circular needles or DPNs necessary to obtain gauge

Size: Adult Women: 22" head circumference

Notions: BOR stitch marker
Row counter
Tapestry Needle-for weaving in ends
Sharp scissors
Blocking mats

Recommended Ease: 2" (5 cm) of negative ease

Finished Measurements: : circumference 20" (51 cm)
Hat depth 10" (25.5 cm)

Gauge: 20 st x 32 rows equals 4 inches (10 cm) in stockinette.

Notes: This hat is worked from the brim to the crown in the round, starting with 1x1 ribbing. The body of the hat is worked from lace charts A and B. After the lace pattern has been finished, the crown decreases are worked over 12 rows.

Stitch Abbreviations used:

BOR: Beginning of the round

CO: Cast on

K: Knit

K2tog: Knit two stitches together (1 stitch decrease)

P: Purl

Ssk: Slip 2 stitches knitwise, one at a time from left-hand needle to right-hand needle, insert left needle into the front of the two stitches just slipped and knit them together through the back loop. (1 stitch decrease)

S2kp2: Slip two stitches from the left hand needle to the right hand needle knitwise, knit the next stitch on the left hand needle, pass the two previously slipped stitches over the stitch just knit. (2 stitch decrease)

Sts: Stitches

YO: Yarn over

Instructions:

Using smaller needles, cast on 100 stitches using German Twisted Cast on method or a stretchy CO of your choice.

Join work in the round, being careful not to twist stitches and place BOR marker..

Rib Round: (K1, P1) repeat till the end.

Work in established rib pattern until it measures 3" (7.5 cm)

Switch to larger needles.

Rows 1- 10: Work Chart A once

Rows 11- 30: Work Chart B once

Rows 31- 40: Work Chart A once

Crown Decreases:

Row 1: Decrease Round 1: (k2, k2tog) to end of round (75 sts remains)

Rows 2-5: k

Row 6: Decrease Round 2: (k1, k2tog) to end of round (50 sts remains)

Rows 7-8: k

Row 9: Decrease Round 3: (k2tog) to end of round (25 sts remaining)

Rows 10-11: k

Row 12: Decrease Round 4: (k2tog) to 1 stitch before the end of round, k1 (13 sts remains)

Cut yarn and pull through remaining stitches using a tapestry needle.

Finishing:

Weave in ends. Wet block to measurements.

Chart A

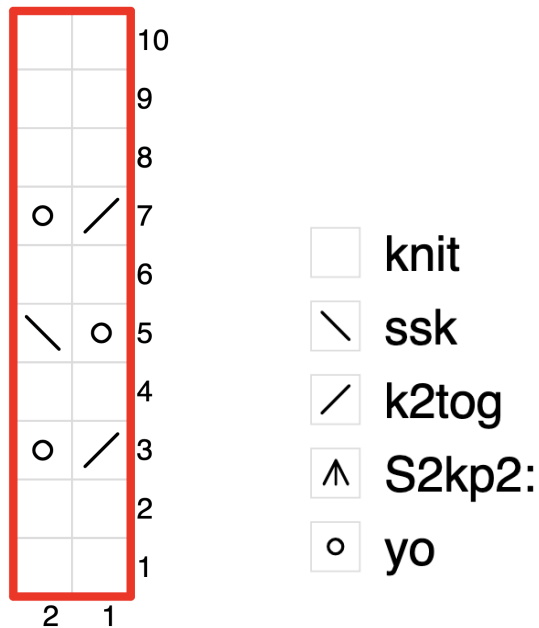
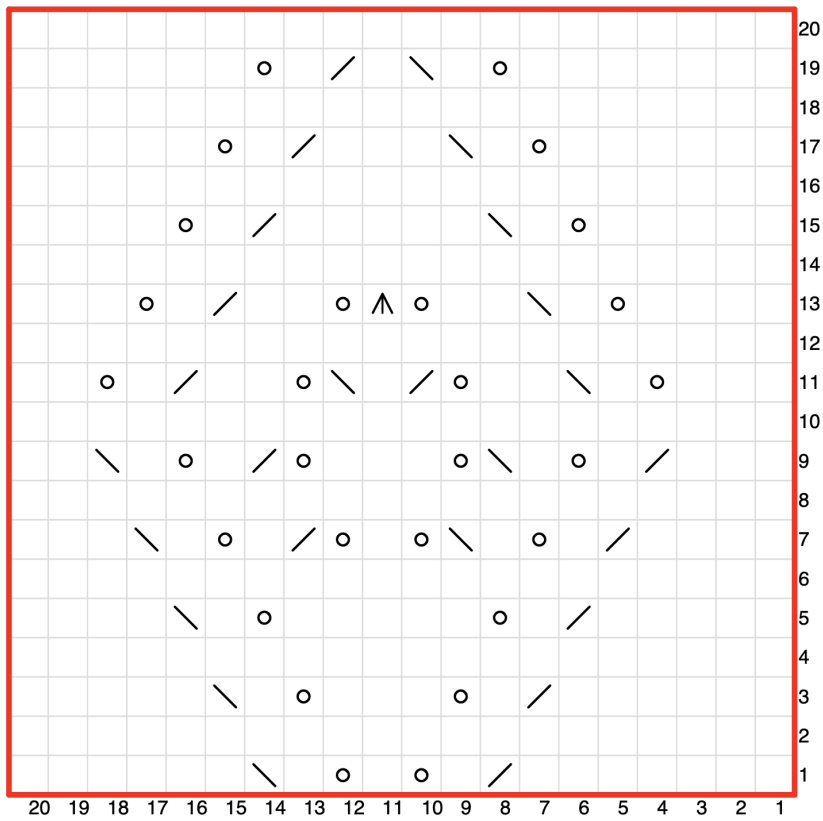


Chart B



- ☐ knit
- ☐ ssk
- ☐ k2tog
- ☐ S2kp2:
- ☐ yo

Written Instructions

Chart A:

Rows 1 and 2:: k

Row 3: (k2tog, yo) to the BOR

Row 4: k

Row 5: (yo, ssk) to the BOR

Row 6: k

Row 7: (k2tog, yo) to the BOR

Rows 8-10: k

Chart B:

Row 1: (k7, k2tog, k1, yo, k1, yo, k1, ssk, k6) repeat 5 times

Row 2 and all even rows: k100

Row 3: (k6, k2tog, k1, yo, k3, yo, k1, ssk, k5) repeat 5 times

Row 5: (k5, k2tog, k1, yo, k5, yo, k1, ssk, k4) repeat 5 times

Row 7: (k4, k2tog, k1, yo, k1, ssk, yo, k1, yo, k2tog, k1, yo, k1, ssk, k3) repeat 5 times

Row 9: (k3, k2tog, k1, yo, k1, ssk, yo, k3, yo, k2tog, k1, yo, k1, ssk, k2) repeat 5 times

Row 11: (k3, yo, k1, ssk, k2, yo, k2tog, k1, ssk, yo, k2, k2tog, k1, yo, k2) repeat 5 times

Row 13: (k4, yo, k1, ssk, k2, yo, S2kp2, yo, k2, k2tog, k1, yo, k3) repeat 5 times

Row 15: (k5, yo, k1, ssk, k5, k2tog, k1, yo, k4) repeat 5 times

Row 17: (k6, yo, k1, ssk, k3, k2tog, k1, yo, k5) repeat 5 times

Row 19: (k7, yo, k1, ssk, k1, (k2tog), k1, yo, k6) repeat 5 times

