

**HUDSON
+WEST^{CO}**

BROOKLYN | MEGHAN BABIN



FORGE

DESIGN DETAILS

FINISHED SIZE

One size; 19.5" [49.5 cm] finished circumference (unstretched); 9.5" [24 cm] finished height.

YARN

Hudson + West Co. Forge (70% U.S. Merino / 30% U.S. Corriedale; 235 yds [215 m]; 3.5 oz. [100g]): ash (natural gray), 1 skein.

NEEDLES

Size A (for hat body): US 6 [5 mm]: 16" [40 cm] circ and one set of double-pointed needles (dpn), or preferred method for small-circumference knitting.

Size B (for ribbing): US 4 [3.5 mm]: 16" [40 cm] circ or preferred method for small-circumference knitting.

Size C (for joining provisional cast on): US 3 [3.25 mm]: 16" [40 cm] circ or preferred method for small-circumference knitting.

Adjust needle size if necessary to obtain the correct gauge.

NOTIONS

Stitch marker (m); cable needle (cn); waste yarn; tapestry needle.

GAUGE

22 sts and 36 rows = 4" (10 cm) over Twisted Rib on **Size A** needle.

SKILLS REQUIRED

Circular knitting; cabling with (or without) a cable needle.

CONSTRUCTION NOTES

- This hat is worked bottom up starting with a provisional cast on. The brim is then folded and worked together to create a folded brim.

STITCH GUIDE

Twisted Rib (*mult of 11, in the round*):

Rnd 1: *p1, k1tbl, p2, k1tbl, k1, k1tbl, p2, k1tbl, p1; rep from * to end.

Rep Rnd 1 for patt.

ABBREVIATIONS

For abbreviations and terms or techniques you don't know, please see our glossary at www.hudsonandwestco.com.

ABOUT THE DESIGN

Ever walk across the Brooklyn Bridge on a chilly fall afternoon? It's a time-honored NY tradition and the inspiration for **Brooklyn** by Meghan Babin. The hat captures the arches and suspension cords of the iconic landmark with interlocking cables and columns of twisted stitches. Brooklyn is worked from the bottom up in the round, starting with a crochet provisional cast on and a fold over brim for extra warmth.

INSTRUCTIONS

HAT

Using **Size B** needle and waste yarn, CO 110 sts using the long-tail cast on method. Join working yarn and knit to end, pm, and prepare to join in the round.

Work in Twisted Rib (see *Stitch Guide* or Rnd 1 of Chart) for 6" [15 cm].

Using **Size C** needle, carefully remove waste yarn and place all held sts on needle — 110 sts on **Size B** and **Size C** needles, respectively.

Fold the fabric in half so the WS are touching and **Size B** and **Size C** needles are parallel. Work front and back sts tog in established patt — 110 sts on needle.

Change to **Size A** 16" [40 cm] circ needle.

Note: Switch to DPNs when there aren't enough sts to work comfortably on 16" [40 cm] circ.

Work Chart Rnds 2-17 once — 110 sts on needle.

Work Chart Rnd 18 until piece measures 8" [20 cm].

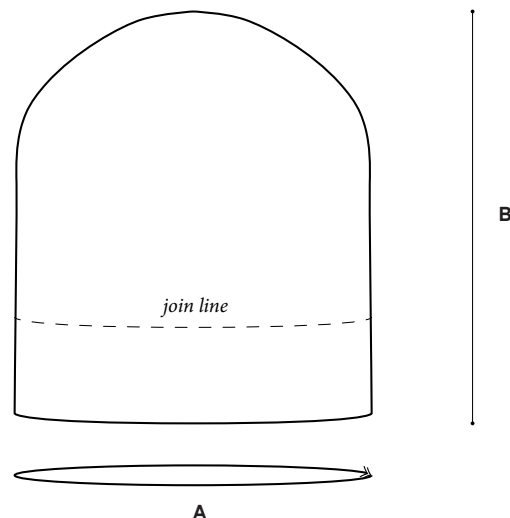
Work Chart Rnd 19-27 — 5 sts on needle.

Break yarn, leaving a long tail. Using tapestry needle, draw tail through rem sts and pull closed. Secure yarn tail on inside of work.

FINISHING

Wet block hat to schematic measurements. Weave in ends.

SCHEMATICS



A (for head circumference): 19.5" [49.5 cm]

B (for length): 9.5" [24 cm]



CHART KEY



knit



purl



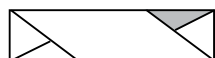
ktbl - knit through the back of the loop



1-3 inc - knit into the back, front, and back of the same stitch.



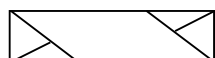
2/1 RPC (2/1 Right Purl Cross) - sl 1 st to cn and hold to back; k2, then p1 from cn.



2/1 LPC (2/1 Left Purl Cross) - sl 2 to cn and hold to front; p1, then k2 from cn.



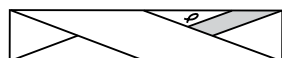
2/1 RC (2/1 Right Cross) - sl 1 st to cn and hold to back; k2, then k1 from cn.



2/1 LC (2/1 Left Cross) - sl 2 sts to cn and hold to front; k1, then k2 from cn.



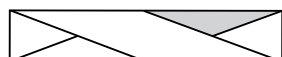
2/2 RC (2/2 Right Cross) - sl 2 sts to cn and hold to back; k2, then k2 from cn.



2/2 LTPC (2/2 Left Twist Purl Cross) - sl 2 sts to cn and hold to front; (p1, k1tlb), then k2 from cn.



2/2 RTPC (2/2 Right Twist Purl Cross) - sl 2 sts to cn and hold to back; k2, then (k1tbl, p1) from cn.



2/2 LPC (2/2 Left Purl Cross)- sl 2 sts on cn and hold to front; p2, then k2 from cn.



2/2 RPC 2/2 RPC (2/2 Right Purl Cross) - sl 2 sts on cn and hold to back; k2, then p2 from cn.



3-1 dec - sl 3 sts purlwise, then pass first 2 sl sts over the last.



ssk - slip 2 sts knitwise, then k slip sts together

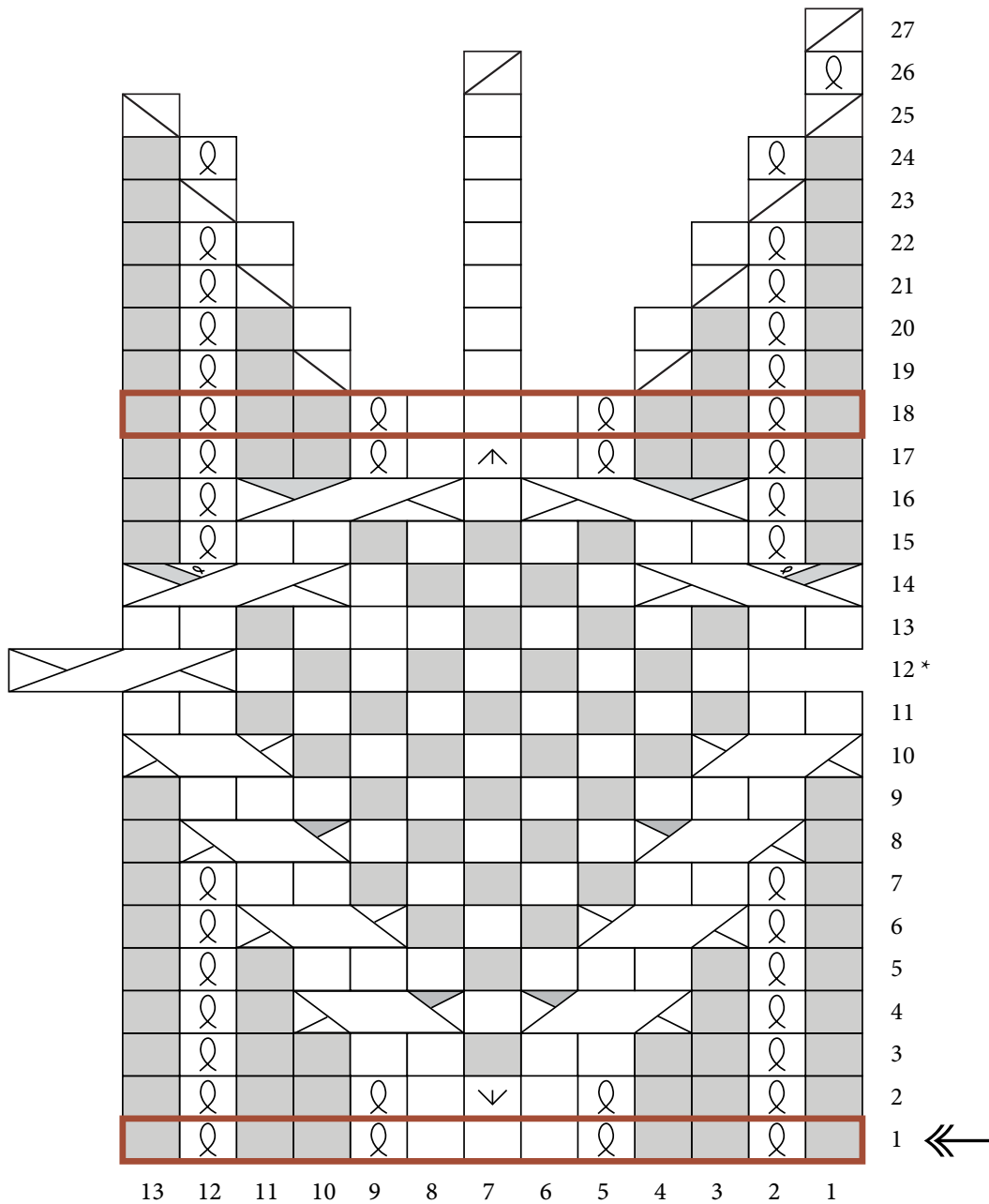


k2tog - knit 2 sts together



pattern repeat

CHART



CREDITS

Meghan Babin (she/her) is the co-founder of Hudson + West Co. She's the former editor of *Interweave Knits*. She hails from the lower Hudson Valley region of New York where she currently lives, designs, and runs H+W HQ East. Her designs and creative work are largely inspired by the dichotomy between New York City and the wilds of the Hudson Valley. Follow her on Instagram [@meggospurls](#). Find all her designs on [Ravelry](#) and her website [www.meggospurls.com](#).

Photography - *Harper Point Photography*
Styling - *Meghan Babin + Sloane Rosenthal*
Hair + Make Up - *Rebecca Babin*
Model - *Layla Heidari*

Questions? Reach us at:
info@hudsonandwestco.com
[www.hudsonandwestco.com](#)

Follow us on Instagram
[@hudsonandwestco](#)
[#HWForge](#)
[#BrooklynHat](#)

