



BRIDGEWATER

SQUARE LACE SHAWL
by Jared Flood



BROOKLYN TWEED

BLUEPRINT

SIZES

One Size

MATERIALS

Approximately 1500 yards of laceweight yarn

Sample shown in Classic Elite *Silky Alpaca Lace* #2403

NEEDLES

One 32" circular needle in size needed to obtain gauge

Suggested size: US5 (3.75mm)

DIMENSIONS

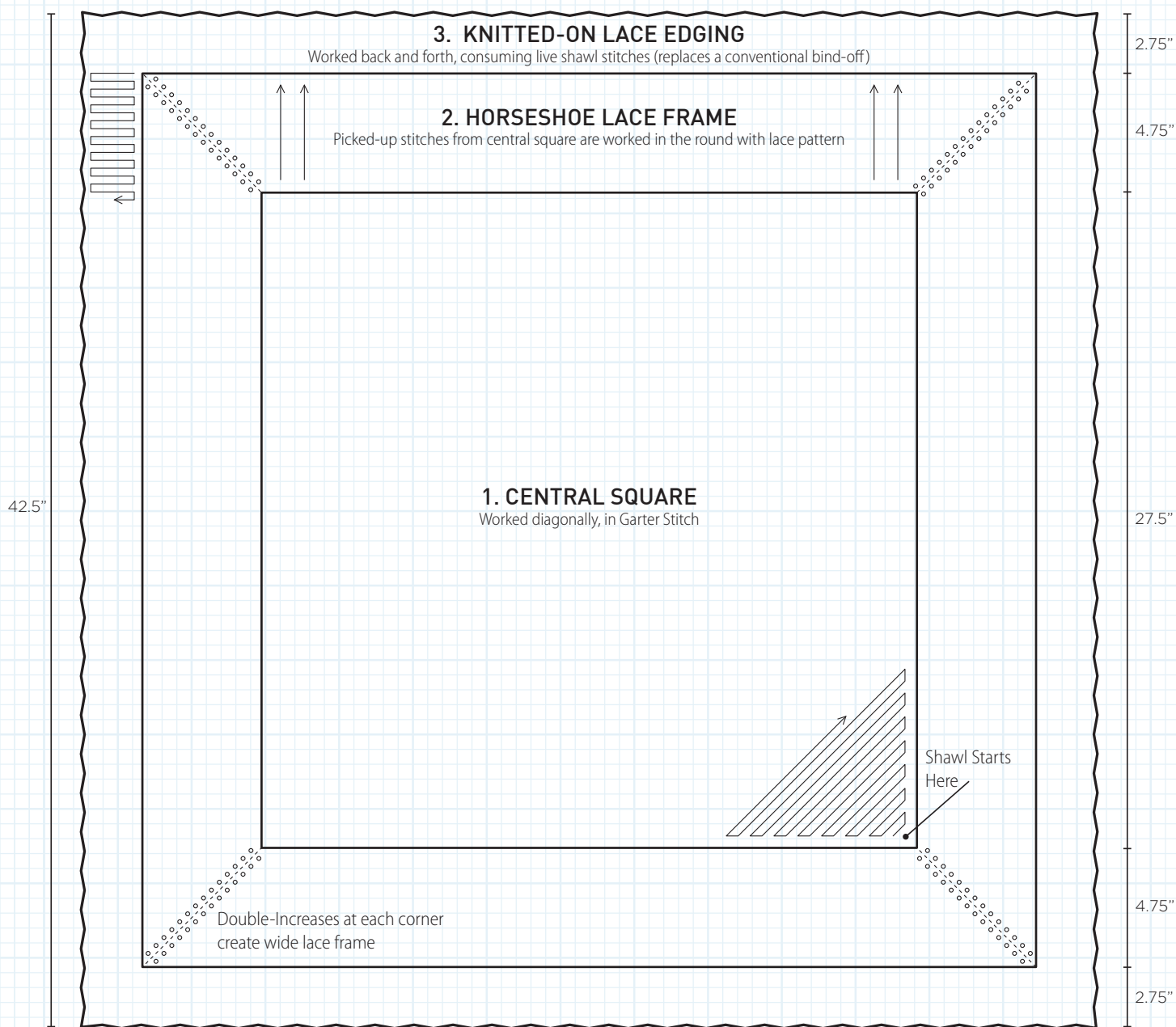
Approximately 42.5" x 42.5" square, after blocking

TOOLS

Eight stitch markers (one marker of an alternate color is recommended), tapestry needle

GAUGE

21 stitches and 21 ridges (42 rows) = 4" in Garter Stitch after blocking



BRIDGEWATER

This square shawl is an homage to my love of laceweight Garter Stitch. The center square is worked on the bias, in Garter Stitch, by working increases (or decreases) into the first stitch of every row. This construction creates long diagonal ridges of garter across the central square. The Horseshoe Lace Frame is worked in the round from stitches that have been picked up directly from the center square. The piece is finished by way of a traditional knitted-on lace edging that attaches itself to the perimeter of the shawl as it is worked, eliminating the need for a conventional bind off.

The elegant simplicity of a large lace square never goes out of style.

CENTRAL SQUARE

With circular needle, cast on 1 stitch.

ROW 1 Knit into the front and back of stitch. (2 stitches now on needle)

INC. ROW Knit into the front and back of first stitch, knit the remaining stitches in row. (1 stitch increased)

Repeat the last row, increasing 1 stitch at the beginning of each row, until you have **205 stitches** on your needle. (102 Garter Stitch ridges on RS of fabric)

You have reached the halfway point of your central square and will now begin decreasing as follows:

DEC. ROW K2tog, knit the remaining stitches in row.

Repeat the last row, decreasing 1 stitch at the beginning of each row, until 1 stitch remains on needle.

You have now completed your central square with diagonal garter stitch ridges that measure 102 ridges along each side of square.

HORSESHOE LACE FRAME

With single live stitch on needle, you will now begin picking up stitches down the first side of central square at the rate of **3 stitches per every 2 ridges**. My recommended pick-up is as follows:

Pick up and knit 1 stitch in the space between 1st and 2nd ridge, pick up and knit once into the front and back of the space between 2nd and 3rd ridge. [3 stitches have now been picked up in the space of 2 garter stitch ridges]

Repeat this rate of pick-up all the way across the first side of central square until you reach next corner. You will have picked up a total of **153 stitches along this side**.

After picking up 153 stitches along first side of central square, **place a marker and repeat the same rate of pick-up along remaining three sides of square, placing a new marker at each corner** (between sets of 153). When you have completed picking up stitches along the last side of square, place 4th marker and join work into the round.

You will no longer be working back-and-forth, as before. **The Horseshoe Lace Frame section of shawl is worked in the round.**

You now have a total of **612 stitches on your needle** -- 4 sections of 153 stitches -- with 1 marker placed at each of the 4 corners. I recommend using a **marker of an alternate color to indicate the beginning of round**.

Work Rounds 1-39 of Bridgewater Chart.

NOTE Bracketed 10-stitch motif repeats itself 15 times on each side of shawl. Bridgewater Chart repeats itself a total of 4 times on each round -- 1 time for each side of central square.

You will be working a KFB (knit into the front and back) increase on both sides of each corner marker every other round, increasing 8 stitches total on those rounds, *with the exception of Round 39, which omits the KFB at the end of each chart repeat*.

After completion of Bridgewater Chart you will have **768 stitches** on your needle (four sections of 192 stitches).

KNITTED-ON EDGING

Remove beginning-of-round marker. Slip next 2 stitches purlwise with yarn in back, replace marker. This indicates new beginning-of-round.

SETUP RND. *Knit until 2 stitches remain before next marker, place new marker, knit 2, remove corner marker, knit 2, place new marker; Repeat from * 2 more times, knit until 4 stitches remain before new beginning-of-round, place marker, knit 4. Break yarn, leaving 6" tail.

There are now **four 4-stitch sections** indicated by pairs of markers at each corner of square, with **sets of 188 stitches** in between on each side.

You are now done knitting in the round. You will proceed with the knitted on edging, working a small width of fabric back-and-forth and attaching it to the perimeter of shawl as you work.

With double pointed needle, **use the Provisional Method to cast on 13 stitches.**

SETUP ROW With circular needle (this is the needle holding the live stitches of shawl), purl 13 stitches from double pointed needle onto L needle of your circular; You now have 13 new stitches standing adjacent to your live shawl stitches on circular needle. These will be the stitches upon which you will be working your knitted-on edging. Turn work, so that the RS is facing.

Work Rows 2-8 of Edging Chart once.

NOTE Edging Chart will be worked over 13 stitches on all rows; **The last edging stitch of every RS row will be worked together with one live stitch from Horse-shoe Lace Frame by way of K2tog ("Edge Join").** In this way, the edging is attached as you go, eliminating the need for a conventional bind off along outer edge of shawl.

Now, **repeat Rows 1-8 of Edging Chart**, joining to outer edge of shawl (as instructed above) until you reach the first marker.

Consume the 4 marked corner stitches by working as follows:

ROWS 1,3,4, Work as directed by Edging Chart.
5, 7 & 8

ROWS 2 & 6 Work as directed by Edging Chart -- but, when you have just worked Edge Join (last stitch of row worked together with one live shawl-edge stitch), leave the shawl-edge stitch on the needle. **You will then work the Edge Join of the next RS row into the same stitch.**

In this way, you are **attaching two RS edging rows to the same shawl-edge-stitch** to ease the knitted-on-edging around the corner of shawl.

After turning the corner, you will have worked two repeats of the Edging Chart in order to consume 4 corner-stitches of shawl-edge.

Continue working **Rows 1-8 of Edging Chart** as before around the remaining circumference of shawl perimeter, working each set of 4 corner-stitches as directed above.

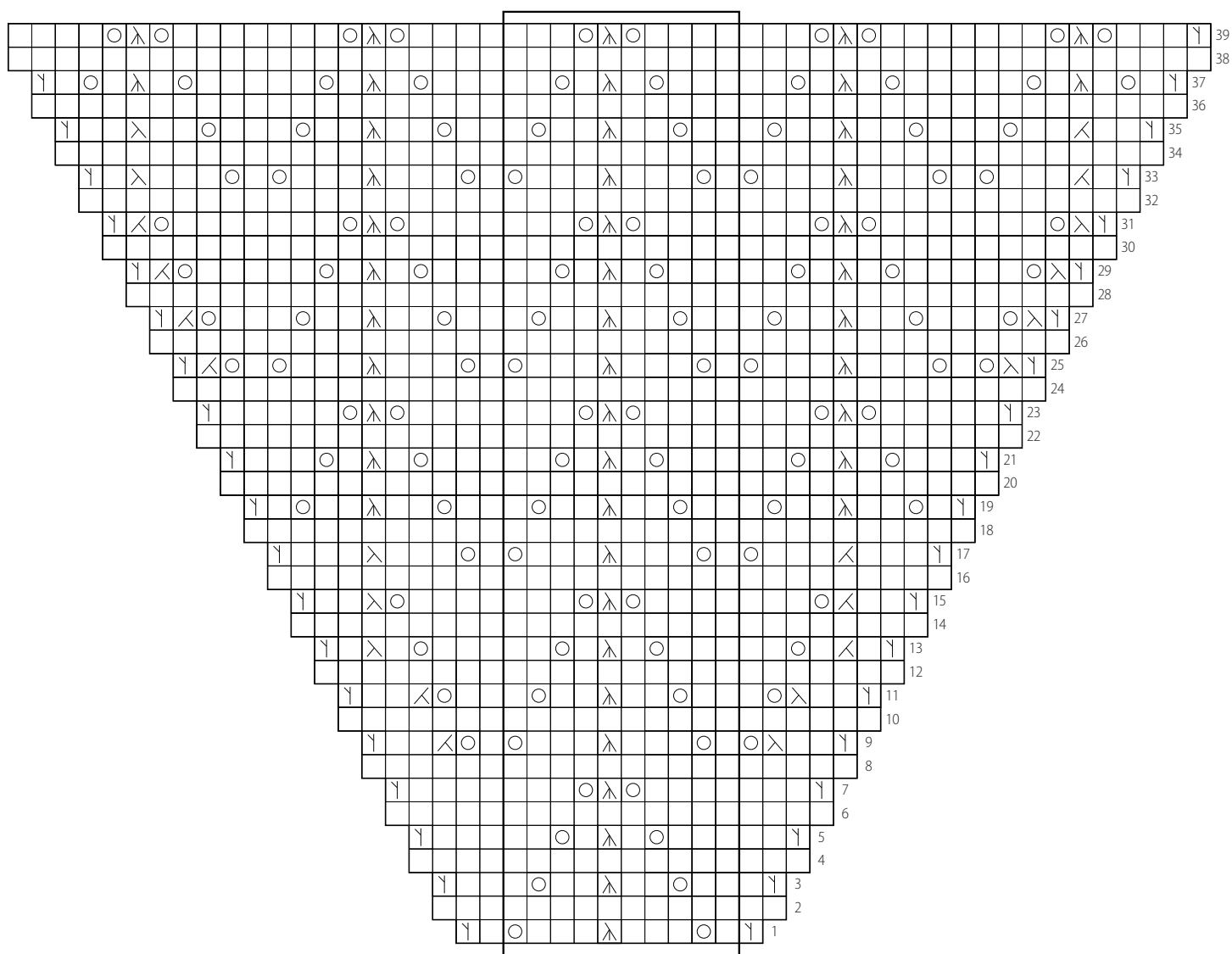
When you have consumed all remaining live stitches from shawl-edge, break yarn leaving an 8" tail. Using a tapestry needle and Kitchener Stitch, use tail to graft the remaining live stitches of Edging to the stitches from Provisional Cast On of Edging.

Weave in all ends invisibly on WS of fabric. Using a full-immersion blocking method, several pins & optional blocking wires, block piece to its full stretched dimensions. Air dry.



BRIDGEWATER CHART

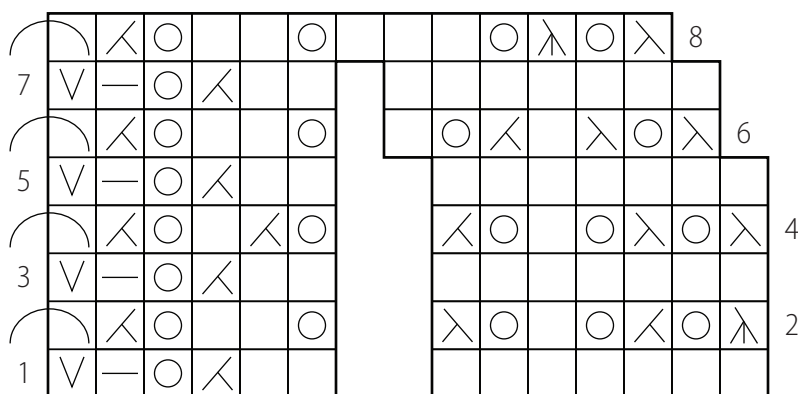
The Bridgewater Chart is worked in the round: all odd and even numbered rounds are worked from right to left. The chart is repeated four times on each round, one instance per each side of central square (worked between corner markers). The 10-stitch bracketed motif repeats itself 15 times on each instance of chart that is worked. KFB (knit into the front and back of one stitch) increases are worked on the first and last stitch of every odd numbered row for every instance of chart. For symbol definitions, see Legend on following page of pattern.



10-Stitch Bracketed Repeat

EDGING CHART & LEGEND

The Edging Chart is worked flat (back and forth): all odd numbered rows are worked from the WS, all even numbered rows are worked from the RS. Each repeat of the 8-row chart will consume 4 stitches from shawl perimeter (2 stitches when turning a corner). Symbol definitions for all charts are listed in the Legend.



Knit on RS; Purl on WS



Purl on RS; Knit on WS



Yarn Over (YO)



Knit 2 Together; decreasing 1 stitch (K2tog)



Slip, Slip, Knit; decreasing 1 stitch (SSK)



Slip 1, K2tog, Pass Slipped Stitch Over; decreasing 2 stitches (SK2P)



Knit into Front and Back of Stitch; increasing 1 stitch (KFB)



Slip 1 Purlwise, with yarn in front (Occurs on WS Edging Rows Only)



Edge Join: Knit last stitch of Edging Chart together with 1 live stitch from Shawl Edge (Occurs on RS Edging Rows Only)