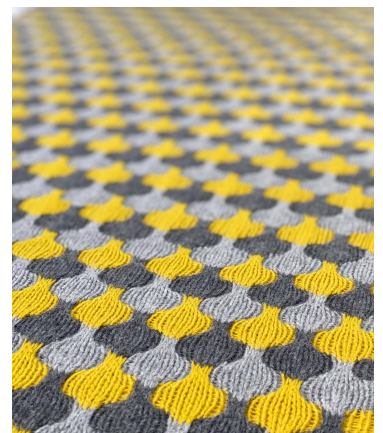




## BONBORI

ぼんぼり (from Japanese) - snow cave shaped lantern

This trapezoid style wrap is created through a series of slip stitch patterns that slowly grow throughout the fabric. Each repeat is transforming progressively width-wise, beginning with the bubble shape patterning playfully intertwining with the color changes as the look of this 3 dimensional fabric achieves depth. With each new section the bubbles expand, that is when their silhouette begins to remind of the special snow cave lanterns called “Bonbori”.



by olga buraya-kefelian

## SKILL LEVEL

Intermediate

## FINISHED MEASUREMENTS

Width at narrow end 17¾" / 45 cm

Width at wide end 33" / 84 cm

Length 60" / 152.5 cm

*Measurements were taken once the shawl was dry after washing and blocking.*

## YARN

Di Gilpin "Lalland DK" (100% Scottish lambswool, 191 yds / 175 m per 50 gr);

Color A · Furze (yellow); 3 skeins

Color B · Silver Birch (light grey); 3 skeins

Color C · Broch (dark grey); 3 skeins

*Sample shawl weight is 375g in original yarn.*

OR approx. 510 yds / 465m in each of 3 colors in other DK weight yarn.

*Note: Almost all of the original yarn was used. If you wish to swatch, make sure not to cut the yarn from the swatch. Instead, work your shawl from opposite ends of the yarn cakes and unravel the swatch if needed.*

## NEEDLES

US 6 (4 mm) 32" (80cm) or longer circular needle

US 5 (3.75 mm) straight or dpn (for working I-cord BO)

OR use size to obtain gauge

## NOTIONS

Crochet hook size G (4 mm)

A length of smooth waste yarn in similar or thinner weight

Tapestry needle

Blocking wires (optional)

## NOTES

This shawl is easily adaptable to make it larger or smaller. Please account for extra yardage that might be required.

Written and charted instructions are provided. You can follow the pattern according to your preference. Always slip sts purlwise.

To join skeins/balls of yarn, avoid joining them in the areas where the sts will be slipped, and rather join them in St st areas or at the beginning/end of the rows.

When changing between colors, and before resuming work with a new color, stretch out the right side edge lengthwise, to allow the yarn trapped inside the incorporated I-cord enough length for when you wash and block the wrap.

## GAUGE

20 sts and 28 rows = 4" / 10 cm in St st worked flat, measured once dry after washing and blocking.

(This gauge is provided to get the correct yarn weight to create the right fabric for this stitch pattern)



1 [10-st] rep measures approx 1½" / 4 cm wide worked in pattern A

1 [12-st] rep measures approx 1¾" / 4.5 cm wide worked in pattern B

1 [14-st] rep measures approx 2¼" / 5.5 cm wide worked in pattern C

1 [16-st] rep measures approx 2¾" / 7 cm wide worked in pattern D

## TECHNIQUES

### CROCHET CHAIN PROVISIONAL CAST ON

<https://vimeo.com/477339456/84f5ed0d17>

With scrap yarn, make a slip-knot loop on the crochet hook. Holding the knitting needle in your left hand and crochet hook in your right, bring the yarn behind the needle. \*With the crochet hook in front of the needle, wrap the yarn over the needle and the hook, and pull loop through. 1 st has been cast onto the needle. Bring the yarn back between the needle and hook and repeat from \* until you have cast on the required number of stitches. Cut yarn and pull tail through last loop to fasten off. To remove the scrap yarn later, pick out the fastened-off end and pull the tail to unravel the chain stitch.

## TRAPPING YARNS NOT CURRENTLY IN USE INSIDE INCORPORATED I-CORD EDGE

Bring current working yarn under the non-working colors (making sure that they hang to the right) before resuming work on the next RS row.

## ADDITIONAL TRICK ON TRAPPING YARNS NOT CURRENTLY IN USE AND MANAGE YARN TANGLES

<https://vimeo.com/532513818/c7fc42415e>

## BACKWARD LOOP INCREASES VIDEO TUTORIAL

<https://vimeo.com/532525716/e73c34cf39>

**INC1R - BACKWARD LOOP INCREASE RIGHT ONTO RN**  
Wrap the working yarn around your left thumb, so that the strand going to the ball is on your palm and the strand attached to the work is towards the back. Using the right needle tip, pick up the front strand on the left thumb from bottom to top. Release the left thumb and pull on the yarn to tighten.

*Once on the following row (WS), the increased stitch is purled through the back loop. If this stitch is simply purled or knit, it will end up getting twisted twice, which would end up unnecessarily tightening the fabric.*

**INC1L - BACKWARDS LOOP INCREASE LEFT ONTO RN**  
Wrap the working yarn around your left thumb, so that the strand going to the ball is on your palm in the back and the strand attached to the work is towards the front around your left thumb. Using the right needle tip, pick up the back strand from the back on the left thumb from bottom to top. Release the left thumb and pull on the yarn to tighten.

## I-CORD BIND OFF

<https://vimeo.com/532618632/a7e9a91e9d>

With smaller size needle, k2, INC1L, sl 3 sts from right needle to left, k3, sl 3 from right needle to left;  
\*K2, sl 1 wise wyib, k1 from shawl, pssso, sl 3 from right needle to left; rep from \* until 5 sts remain (3 I-cord sts and 2 shawl sts).

K1, ssk. You now have 2 sts on the LN and 2 sts on the RN, with the working yarn between them. Cut yarn leaving a 4-5" / 10-13 cm tail. Thread tail through tapestry needle and graft the sts from both needles together.

## ABBREVIATIONS

BO - bind off  
CO - cast on  
inc - increase  
k - knit  
kwise - knitwise/as if to knit  
LN - left needle  
p - purl  
pssso - pass slipped stitch over  
pwise - purlwise/as if to purl  
rem - remain(ing)  
rep - repeat

RN - right needle  
RS - right side  
sl - slip (as if to purl)  
St st - Stockinette stitch  
st(s) - stitch(es)  
tbl - through back loop  
yo - yarn over  
WS - wrong side  
wyib - with yarn in back  
wyif - with yarn in front

## DIRECTIONS

Using scrap yarn and provisional method with crochet hook, CO 113 sts onto needle.

Continue with color A.

**Row 1 (WS):** P to last 2 sts, sl2 wyif.

**Row 2 (RS):** K to last 2 sts, sl2 wyif.

**Row 3 (WS):** P to last 2 sts, sl2 wyif. Do not cut yarn.

## SETTING UP PATTERNING VIDEO TUTORIAL

<https://vimeo.com/532521240/554cb66eb3>

## Working from Charts or written directions and joining colors as necessary:

Work Rows 1-60 of **Chart A** twice, then work rows 1-38 once more.

Continue with color B.

**Increase Row A (RS):** K5, \*INC1R, k3, INC1L, k2, sl3 wyib, k2; rep from \* to last 8 sts, INC1R, k3, INC1L, k3, sl2 wyif. 135 sts. 22 sts increased

**Next row (WS):** K2, p10, \*sl3 wyif, p9; rep from \* to last 3 sts, p1, sl2 wyif.

Work Rows 1-60 of **Chart B** twice, then work rows 1-38 once more.

Continue with color C.

**Increase Row B (RS):** K6, \*INC1R, k3, INC1L, k3, sl3 wyib, k3; rep from \* to last 9 sts, INC1R, k3, INC1L, k4, sl2 wyif. 157 sts. 22 sts increased

**Next row (WS):** K2, p12, \*sl3 wyif, p11; rep from \* to last 3 sts, p1, sl2 wyif.

Work Rows 1-60 of **Chart C** twice, then work Rows 1-38 once more.

Continue with color A.

**Increase Row C (RS):** K7, \*INC1R, k3, INC1L, k4, sl3 wyib, k4; rep from \* to last 10 sts, INC1R, k3, INC1L, k5, sl2 wyif. 179 sts. 22 sts increased

**Next row (WS):** K2, p14, \*sl3 wyif, p13; rep from \* to last 3 sts, p1, sl2 wyif.

Work Rows 1-60 of **Chart D** 3 times, then work Rows 1-13 once only.

With WS facing and color B work I-cord bind off using smaller size needle.

CHART A

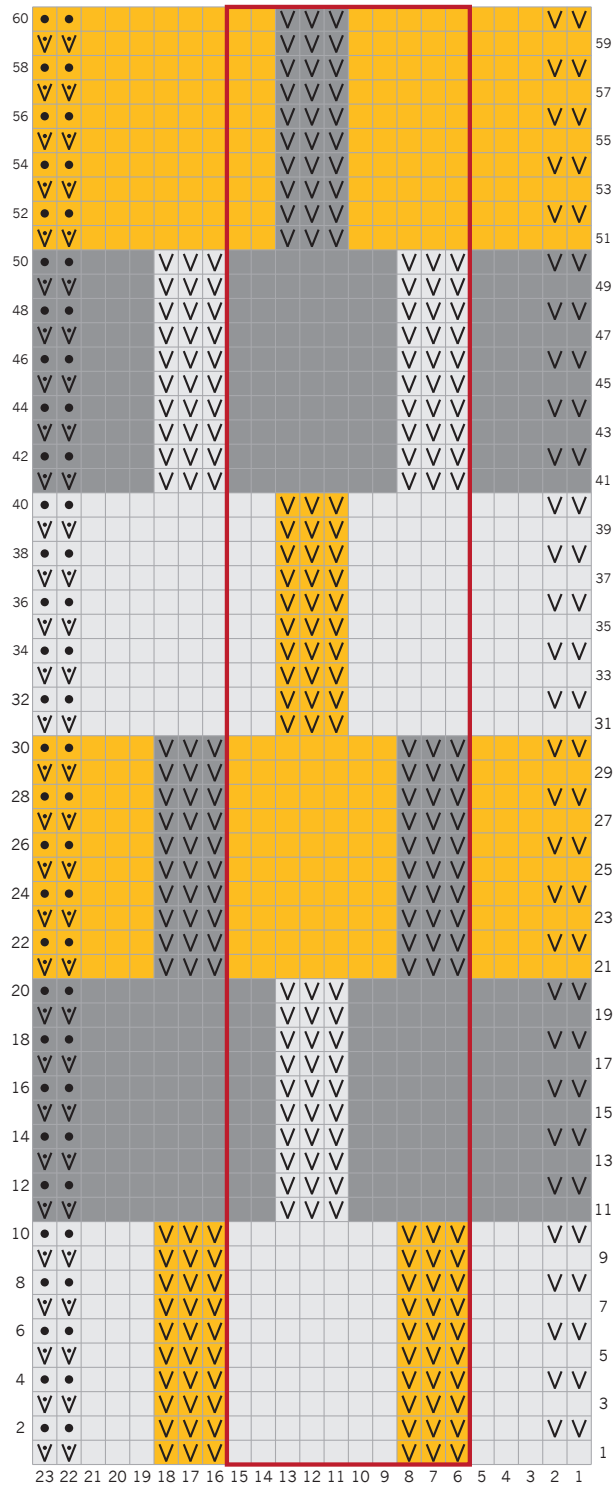
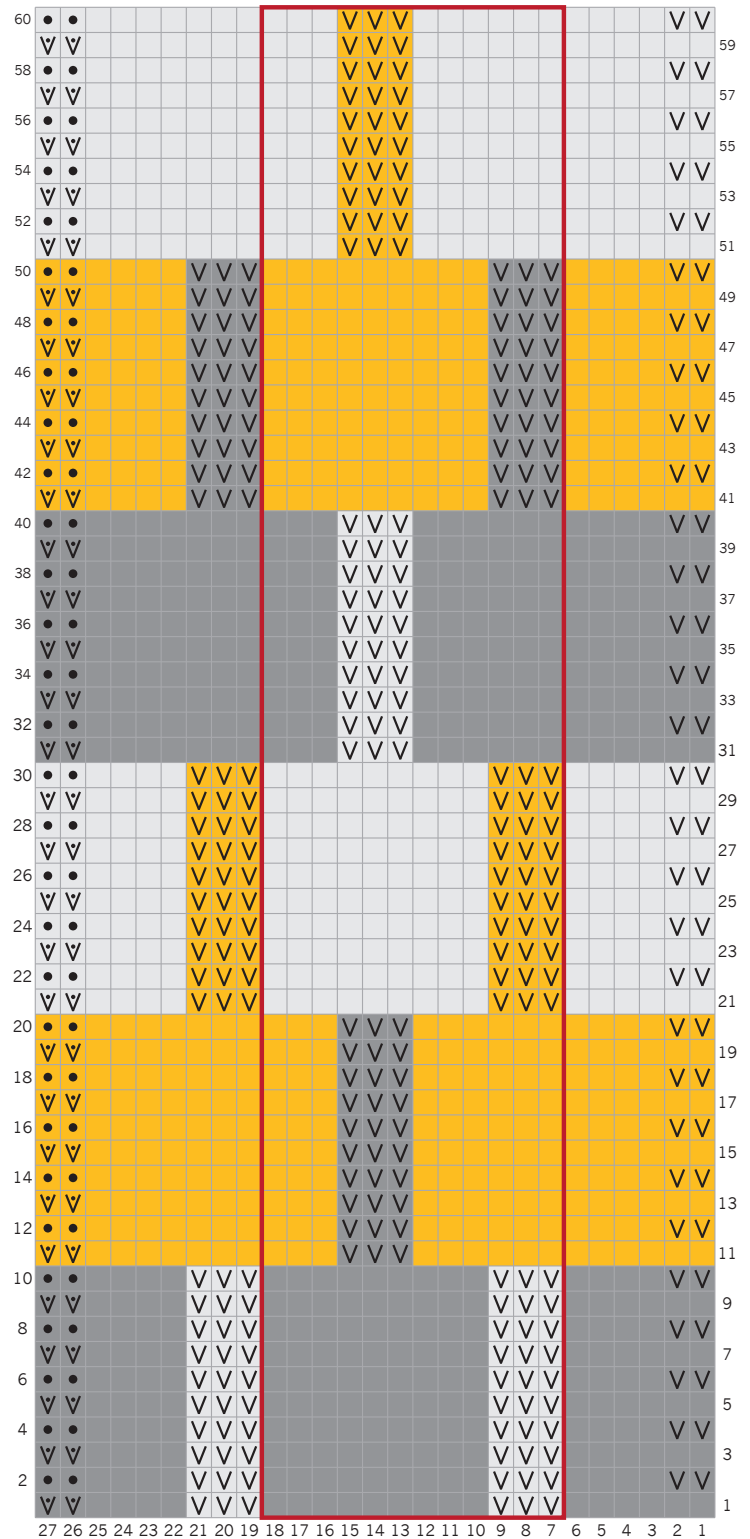


CHART B



## CHART KEY

- |  |                      |  |   |
|--|----------------------|--|---|
|  | RS: knit<br>WS: purl |  | RS: slip as if to purl with yarn in back<br>WS: slip as if to purl with yarn in front |
|  | RS: purl<br>WS: knit |  | RS: slip as if to purl with yarn in front   |
|  | color A              |  | pattern repeat  |
|  | color B              |  |   |
|  | color C              |  |   |



CHART C

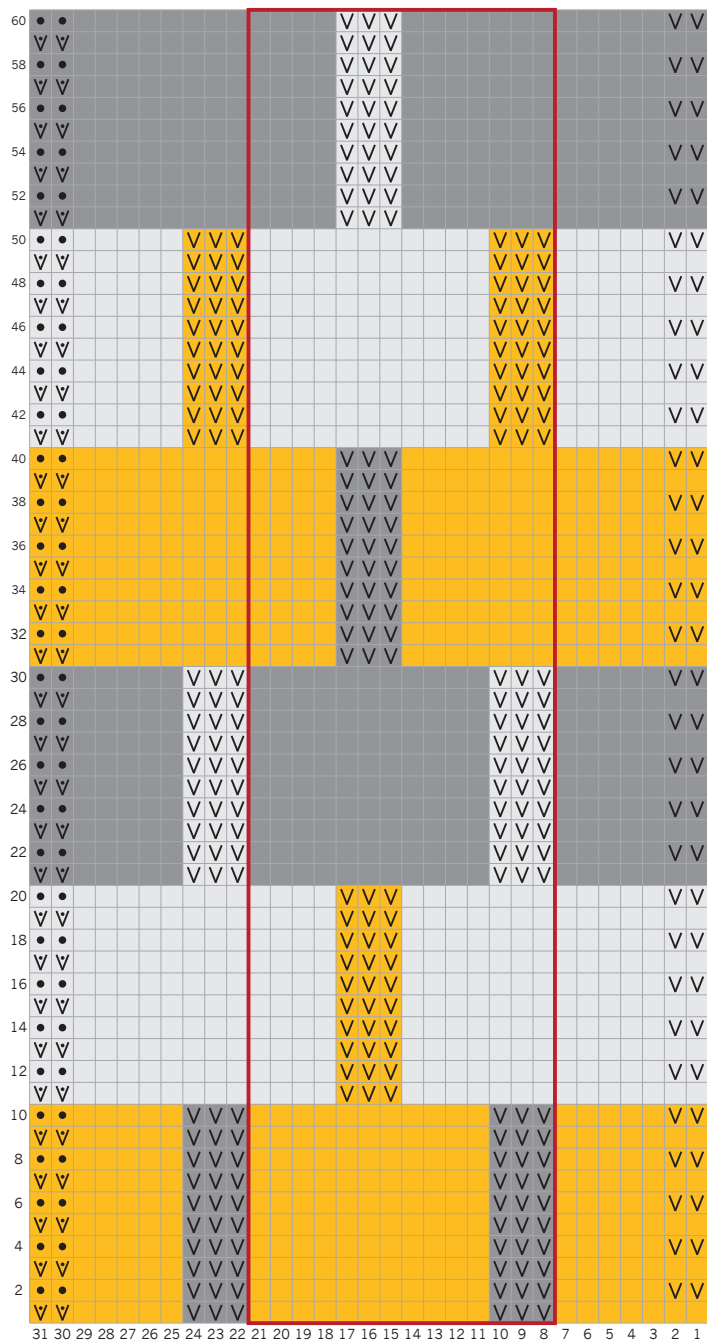
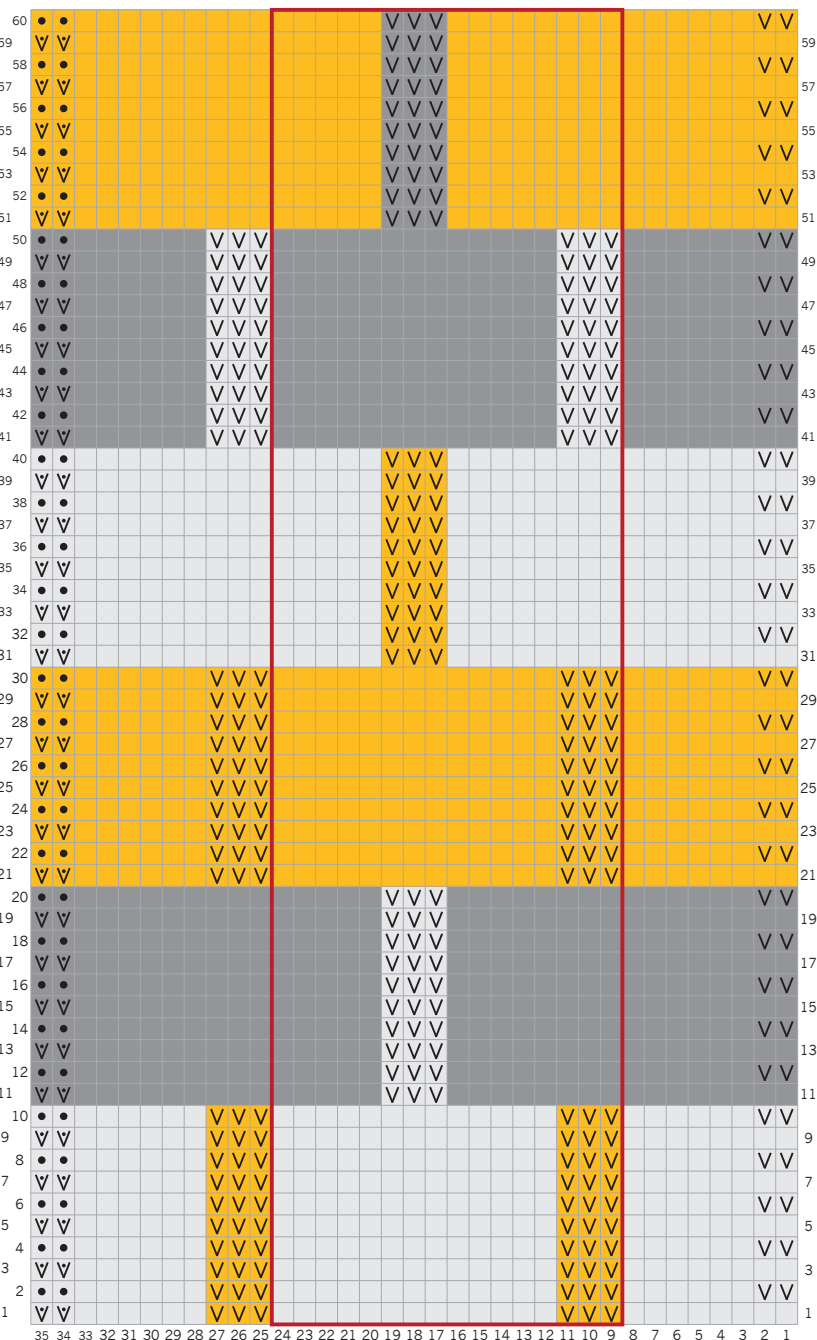


CHART D



## CHART KEY

- |                      |   |
|----------------------|---|
| RS: knit<br>WS: purl | RS: slip as if to purl with yarn in back<br>WS: slip as if to purl with yarn in front |
| RS: purl<br>WS: knit | RS: slip as if to purl with yarn in front   |
| color A              | pattern repeat  |
| color B              |   |
| color C              |   |

## WRITTEN INSTRUCTIONS

### CHART A - 10 st repeat.

#### Color B

**Rows 1, 3, 5, 7, 9 (RS):** Bring color B under color A (and color C), resume with color B, k5, \*sl3 wyib, k7; rep from \* to last 8 sts, sl3 wyib, k3, sl2 wyif.

**Rows 2, 4, 6, 8, 10 (WS):** K2, p3, \*sl3 wyif, p7; rep from \* to last 8 sts, sl3 wyif, p3, sl2 wyif. Do not cut yarn.

#### Color C

**Rows 11, 13, 15, 17, 19 (RS):** Bring color C under color A and color B, resume with color C, k10, \*sl3 wyib, k7, rep from \* to last 3 sts, k1, sl2 wyif.

**Rows 12, 14, 16, 18, 20 (WS):** K2, p8, \*sl3 wyif, p7; rep from \* to last 3 sts, p1, sl2 wyif.

#### Color A

**Rows 21, 23, 25, 27, 29 (RS):** Bring color A under color B and color C, resume with color A, k5, \*sl3 wyib, k7; rep from \* to last 8 sts, sl3 wyib, k3, sl2 wyif.

**Rows 22, 24, 26, 28, 30 (WS):** K2, p3, \*sl3 wyif, p7; rep from \* to last 8 sts, sl3 wyif, p3, sl2 wyif.

#### Color B

**Rows 31, 33, 35, 37, 39 (RS):** Bring color B under color A and color C, resume with color B, k10, \*sl3 wyib, k7, rep from \* to last 3 sts, k1, sl2 wyif.

**Rows 32, 34, 36, 38, 40 (WS):** K2, p8, \*sl3 wyif, p7; rep from \* to last 3 sts, p1, sl2 wyif.

#### Color C

**Rows 41, 43, 45, 47, 49 (RS):** Bring color C under color A and color B, resume with color C, k5, \*sl3 wyib, k7; rep from \* to last 8 sts, sl3 wyib, k3, sl2 wyif.

**Rows 42, 44, 46, 48, 50 (WS):** K2, p3, \*sl3 wyif, p7; rep from \* to last 8 sts, sl3 wyif, p3, sl2 wyif.

#### Color A

**Rows 51, 53, 55, 57, 59 (RS):** Bring color A under color B and color C, resume with color A, k10, \*sl3 wyib, k7, rep from \* to last 3 sts, k1, sl2 wyif.

**Rows 52, 54, 56, 58, 60 (WS):** K2, p8, \*sl3 wyif, p7; rep from \* to last 3 sts, p1, sl2 wyif.

### CHART B - 12 st repeat.

#### Color C.

**Rows 1, 3, 5, 7, 9 (RS):** Bring color C under color A and color B, resume with color C, k6, \*sl3 wyib, k9; rep from \* to last 9 sts, sl3 wyib, k4, sl2 wyif.

**Rows 2, 4, 6, 8, 10 (WS):** K2, p4, \*sl3 wyif, p9; rep from \* to last 9 sts, sl3 wyif, p4, sl2 wyif.

#### Color A

**Rows 11, 13, 15, 17, 19 (RS):** Bring color A under color B and color C, resume with color A, k12, \*sl3 wyib, k9, rep from \* to last 3 sts, k1, sl2 wyif.

**Rows 12, 14, 16, 18, 20 (WS):** K2, p10, \*sl3 wyif, p9; rep from \* to last 3 sts, p1, sl2 wyif.

#### Color B

**Rows 21, 23, 25, 27, 29 (RS):** Bring color B under color A and color C, resume with color B, k6, \*sl3 wyib, k9; rep from \* to last 9 sts, sl3 wyib, k4, sl2 wyif.

**Rows 22, 24, 26, 28, 30 (WS):** K2, p4, \*sl3 wyif, p9; rep from \* to last 9 sts, sl3 wyif, p4, sl2 wyif.

#### Color C

**Rows 31, 33, 35, 37, 39 (RS):** Bring color C under color A and color B, resume with color C, k12, \*sl3 wyib, k9, rep from \* to last 3 sts, k1, sl2 wyif.

**Rows 32, 34, 36, 38, 40 (WS):** K2, p10, \*sl3 wyif, p9; rep from \* to last 3 sts, p1, sl2 wyif.

#### Color A

**Rows 41, 43, 45, 47, 49 (RS):** Bring color A under color B and color C, resume with color A, k6, \*sl3 wyib, k9; rep from \* to last 9 sts, sl3 wyib, k4, sl2 wyif.

**Rows 42, 44, 46, 48, 50 (WS):** K2, p4, \*sl3 wyif, p9; rep from \* to last 9 sts, sl3 wyif, p4, sl2 wyif.

#### Color B

**Rows 51, 53, 55, 57, 59 (RS):** Bring color B under color A and color C, resume with color B, k12, \*sl3 wyib, k9, rep from \* to last 3 sts, k1, sl2 wyif.

**Rows 52, 54, 56, 58, 60 (WS):** K2, p10, \*sl3 wyif, p9; rep from \* to last 3 sts, p1, sl2 wyif.

### CHART C - 14 st repeat.

#### Color A

**Rows 1, 3, 5, 7, 9 (RS):** Bring color A under color B and color C, resume with color A, k7, \*sl3 wyib, k11; rep from \* to last 10 sts, sl3 wyib, k5, sl2 wyif.

**Rows 2, 4, 6, 8, 10 (WS):** K2, p5, \*sl3 wyif, p11; rep from \* to last 10 sts, sl3 wyif, p5, sl2 wyif.

#### Color B

**Rows 11, 13, 15, 17, 19 (RS):** Bring color B under color A and color C, resume with color B, k14, \*sl3 wyib, k11, rep from \* to last 3 sts, k1, sl2 wyif.

**Rows 12, 14, 16, 18, 20 (WS):** K2, p12, \*sl3 wyif, p11; rep from \* to last 3 sts, p1, sl2 wyif.

#### Color C

**Rows 21, 23, 25, 27, 29 (RS):** Bring color C under color A and color B, resume with color C, k7, \*sl3 wyib, k11; rep from \* to last 10 sts, sl3 wyib, k5, sl2 wyif.

**Rows 22, 24, 26, 28, 30 (WS):** K2, p5, \*sl3 wyif, p11; rep from \* to last 10 sts, sl3 wyif, p5, sl2 wyif.

#### Color A

**Rows 31, 33, 35, 37, 39 (RS):** Bring color A under color B and color C, resume with color A, k14, \*sl3 wyib, k11, rep from \* to last 3 sts, k1, sl2 wyif.

**Rows 32, 34, 36, 38, 40 (WS):** K2, p12, \*sl3 wyif, p11; rep from \* to last 3 sts, p1, sl2 wyif.



#### Color B

**Rows 41, 43, 45, 47, 49 (RS):** Bring color B under color A and color C, resume with color B, k7, \*sl3 wyib, k11; rep from \* to last 10 sts, sl3 wyib, k5, sl2 wyif.

**Rows 42, 44, 46, 48, 50 (WS):** K2, p5, \*sl3 wyif, p11; rep from \* to last 10 sts, sl3 wyif, p5, sl2 wyif.

#### Color C

**Rows 51, 53, 55, 57, 59 (RS):** Bring color C under color A and color B, resume with color C, k14, \*sl3 wyib, k11, rep from \* to last 3 sts, k1, sl2 wyif.

**Rows 52, 54, 56, 58, 60 (WS):** K2, p12, \*sl3 wyif, p11; rep from \* to last 3 sts, p1, sl2 wyif.

#### CHART D - 16 st repeat.

#### Color B

**Rows 1, 3, 5, 7, 9 (RS):** Bring color B under color A and color C, resume with color B, k8, \*sl3 wyib, k13; rep from \* to last 11 sts, sl3 wyib, k6, sl2 wyif.

**Rows 2, 4, 6, 8, 10 (WS):** K2, p6, \*sl3 wyif, p13; rep from \* to last 11 sts, sl3 wyif, p6, sl2 wyif.

#### Color C

**Rows 11, 13, 15, 17, 19 (RS):** Bring color C under color A and color B, resume with color C, k16, \*sl3 wyib, k13, rep from \* to last 3 sts, k1, sl2 wyif.

**Rows 12, 14, 16, 18, 20 (WS):** K2, p14, \*sl3 wyif, p13; rep from \* to last 3 sts, p1, sl2 wyif.

#### Color A

**Rows 21, 23, 25, 27, 29 (RS):** Bring color A under color B and color C, resume with color A, k8, \*sl3 wyib, k13; rep from \* to last 11 sts, sl3 wyib, k6, sl2 wyif.

**Rows 22, 24, 26, 28, 30 (WS):** K2, p6, \*sl3 wyif, p13; rep from \* to last 11 sts, sl3 wyif, p6, sl2 wyif.

#### Color B

**Rows 31, 33, 35, 37, 39 (RS):** Bring color B under color A and color C, resume with color B, k16, \*sl3 wyib, k13, rep from \* to last 3 sts, k1, sl2 wyif.

**Rows 32, 34, 36, 38, 40 (WS):** K2, p14, \*sl3 wyif, p13; rep from \* to last 3 sts, p1, sl2 wyif.

#### Color C

**Rows 41, 43, 45, 47, 49 (RS):** Bring color C under color A and color B, resume with color C, k8, \*sl3 wyib, k13; rep from \* to last 11 sts, sl3 wyib, k6, sl2 wyif.

**Rows 42, 44, 46, 48, 50 (WS):** K2, p6, \*sl3 wyif, p13; rep from \* to last 11 sts, sl3 wyif, p6, sl2 wyif.

#### Color A

**Rows 51, 53, 55, 57, 59 (RS):** Bring color A under color B and color C, resume with color A, k16, \*sl3 wyib, k13, rep from \* to last 3 sts, k1, sl2 wyif.

**Rows 52, 54, 56, 58, 60 (WS):** K2, p14, \*sl3 wyif, p13; rep from \* to last 3 sts, p1, sl2 wyif.

## FINISHING

Unravel scrap yarn from provisional CO and place resulting live sts onto larger size needle.

With WS facing, slip first 2 sts, rotate the needle 180°, then slip them back in the new orientation onto left LN. Now the first 2 sts are knits. Work I-cord bind off with color A (see Technique).

Weave in ends but do not trim them.

Soak shawl in warm water with wool wash. Do not wring.

## BLOCKING VIDEO

<https://vimeo.com/532621723/aa450828d3>

Block to measurements, use blocking wires for the side edges, and pin out the bound off edge shaping them in a scalloped manner, and let dry. Trim ends.



SHARE YOUR FINISHED BONBORI WRAP ON SOCIAL MEDIA #BONBORIWRAP

Be the first to know about upcoming design releases, special introductory discounts, classes and events by subscribing to OLGAJAZZY newsletter  
<http://eepurl.com/dCbz8X>