

Boardwalk Mosaic Shawl

MARI TOBITA



Photos by Matt Graves

Simple short-row shaping, a band of openwork flowers, and a variety of mosaic colorwork patterns make this stunning crescent shawl enjoyable to knit and lovely to wear.

In her 1943 book *Mary Thomas's Book of Knitting Patterns* (Hodder and Stoughton, London) author Mary Thomas includes charts and an explanation for “slip-stitch knitting”—designs formed by slipping pattern stitches (unworked) from one needle to the next and knitting or purling them on the next row. However, it wasn't until the 1960s, with the publication of Barbara G. Walker's *A Treasury of Knitting Patterns* (Charles Scribner's Sons, New York, 1976) that the craze for mosaic knitting (named by Walker) became popular among American knitters. Walker went on to add mosaic knitting patterns to each of her three subsequent treasuries,

and in 1976 she published a book, *Mosaic Knitting*, that contains 380 of her original designs.

When I designed this mosaic shawl, I imagined myself walking along a boardwalk on the edge of the seashore on a breezy day. I wanted to create a sampler of mosaic knitting, so I arranged some of my favorite patterns to resemble a boardwalk made of wooden planks. I added a dainty openwork insertion in the middle as an accent, then bordered the shawl with solid and striped rows of garter stitch.

There are five different mosaic knitting designs in the Boardwalk Mosaic Shawl for you to practice reading the charts and understanding this imaginative technique. The patterns that make up this shawl are timeless, and the crescent shape of this fun-to-knit shawl means that it will wrap beautifully around your neck and shoulders but not be too cumbersome to wear on a summer evening.

For more information about Barbara Walker, please see *PieceWork* magazine Fall 2024.

M A T E R I A L S

- ♦ Rowan *Summerlite 4ply* (100% cotton), 191 yd (175 m)/50 g ball: 1 ball each of #438 Sand Dune (MC) and #437 Seashell (CC1); 2 balls of #429 Navy Ink (CC2)
- ♦ Needles: size 3 (3.25 mm) and size 4 (3.5 mm), 32" (80 cm) or longer circular needles or sizes needed to obtain gauge
- ♦ Spare needle: size 6 (4 mm) or 2 sizes bigger than larger needle for binding off
- ♦ Stitch markers
- ♦ Tapestry needle

Gauge: 26 sts and 56 rows = 4" (10.2 cm) in garter stitch using smaller needles, after blocking; 24 sts and 57 rows = 4" (10.2 cm) in Mosaic patts from charts using larger needles, after blocking.

Finished Measurements: 68" (172.7 cm) wide across upper edge and 13" (33 cm) high at tallest point in center.

N O T E S

The first 2 stitches and last 2 stitches of every row are worked in garter stitch throughout, with increases worked inside these edge stitches.

Because of the rapid increase rate, short-rows are periodically worked on the edge stitches to



This crescent-shaped shawl has symmetrical tapered ends.

prevent the edges from becoming too tight. It is not necessary to pick up and knit the wraps for these short-rows because the fabric is mostly garter stitch; simply knit each wrapped stitch as you come to it. Any gaps at the short-row turning points will be concealed in the "ditch" between the garter ridges; in the lace section, the turning-point holes become part of the openwork pattern.

Most of the shawl is worked using 2 colors that alternate every 2 rows. When changing colors, drop the old color to the front, then bring the new color up behind the old color into working position, without twisting the strands. In places where you need to carry the nonworking color up the selvedge for more than 2 rows, trap the carried strand against the edge of the work at the beginning of each RS row as follows: Hold the working color out to the right, bring the nonworking color up behind the working color and drop it in front, then continue with the working color. The nonworking strand has been wrapped counterclockwise around the working strand.

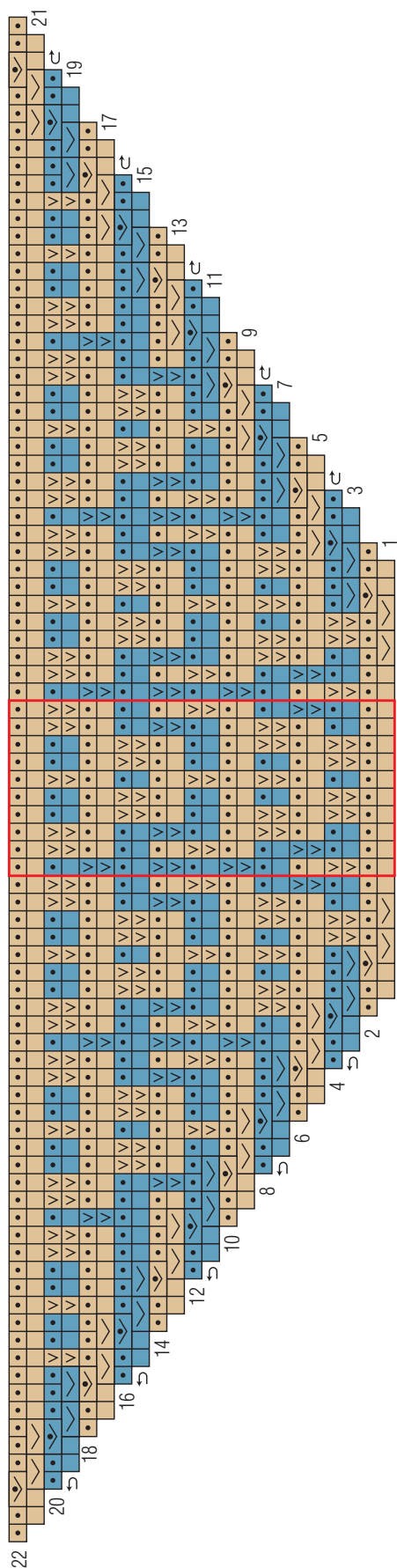
Visit pieceworkmagazine.com/abbreviations for terms you don't know.

I N S T R U C T I O N S

With CC1 and smaller needle, CO 9 sts.

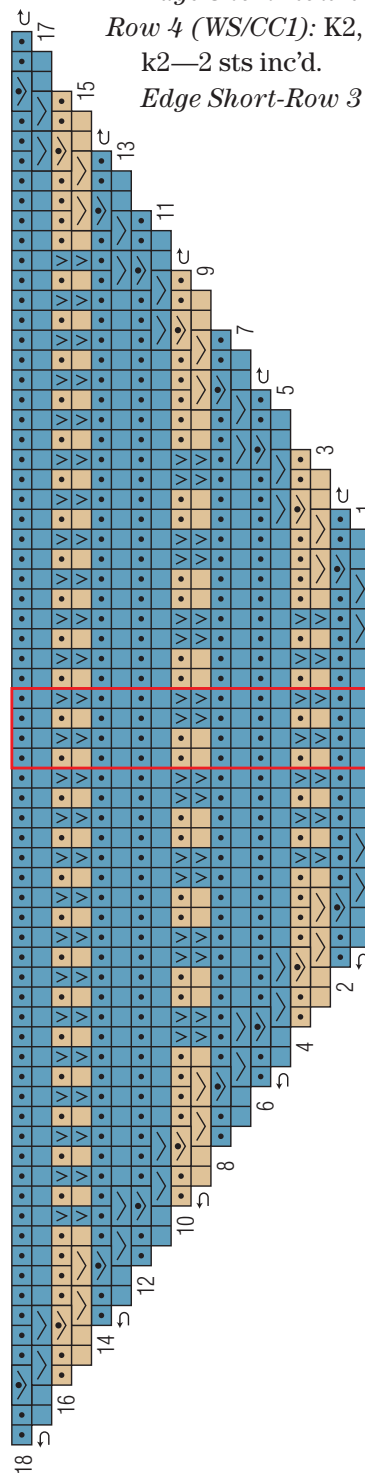
Set-up row (WS/CC1): K2, k1f&b, k3, k1f&b, k2—11 sts.

Mosaic Chart A



10-st repeat

Mosaic Chart B



4-st repeat

Row 1 (RS/MC): K2, k1f&b twice, k to last 4 sts, k1f&b twice, k2—4 sts inc'd.

Row 2 (WS/MC): K2, k1f&b, k to last 3 sts, k1f&b, k2—2 sts inc'd.

Row 3 (RS/CC1): K2, k1f&b twice, k to last 4 sts, k1f&b twice, k2—4 sts inc'd.

Edge Short-Row 1 (WS): Turn work, k3, wrap next st and turn work (W&T).

Edge Short-Row 2 (RS): K3.

Row 4 (WS/CC1): K2, k1f&b, k to last 3 sts, k1f&b, k2—2 sts inc'd.

Edge Short-Row 3 (RS): Turn work, k3, W&T.

Key

- MC
- CC1
- CC2
- knit on RS; purl on WS
- purl on RS; knit on WS
- yo
- k2tog
- ssk
- sl 1 kwise, k2tog, pssso
- sl 1 pwise wyb on RS; sl 1 pwise wyf on WS
- repeat
- k1f&b on RS
- k1f&b on WS

work Edge Short-Rows 1 and 2 at end of RS rows

work Edge Short-Rows 3 and 4 at end of WS rows

Edge Short-Row 4 (WS): K3.

Rep Rows 1–4, including the 4 short-rows, 8 more times—119 sts.

Cut MC and CC1. Join CC2.

Using CC2 for every row, work Rows 1–4 once more, including the 4 short-rows—131 sts.

Mosaic Chart A

Change to larger needle and join MC.

Work Rows 1 and 2 of chart—137 sts.

Work Row 3 of chart, then work Edge Short-Rows 1 and 2 at end of row as shown by the arrow.

Work Row 4 of chart, then work Edge Short-Rows 3 and 4 at end of row as shown by the arrow—143 sts.

Cont in this manner, working Edge Short-Rows 1 and 2 at the ends of Rows 3, 7, 11, 15, and 19, and working Edge Short-Rows 3 and 4 at the ends of Rows 4, 8, 12, 16, and 20.

Cont in patt until Row 22 of chart has been completed—197 sts.

Mosaic Chart B

Cont working the Edge Short-Rows where indicated by arrows, work Rows 1–18 of chart—251 sts.

Cut CC2.

Lace Flowers Chart

With MC only, work Row 1 of Lace Flowers chart; this row begins as a multiple of 10 sts plus 11 and ends as a multiple of 9 sts plus 14—230 sts.

Cont working Edge Short-Rows where indicated by arrows, work Rows 2–10 of chart—256 sts.

Cut MC and join CC2.

Inc row (RS/CC2): K2, k1f&b twice, k2, k1f&b, *k8, k1f&b; rep from * to last 6 sts, k2, k1f&b twice, k2—288 sts.

Edge Short-Row 1 (WS): Turn work, k3, W&T.

Edge Short-Row 2 (RS): K3.

Next row (WS/CC2): K2, k1f&b, k to last 3 sts, k1f&b, k2—290 sts.

Edge Short-Row 3 (RS): Turn work, k3, W&T.

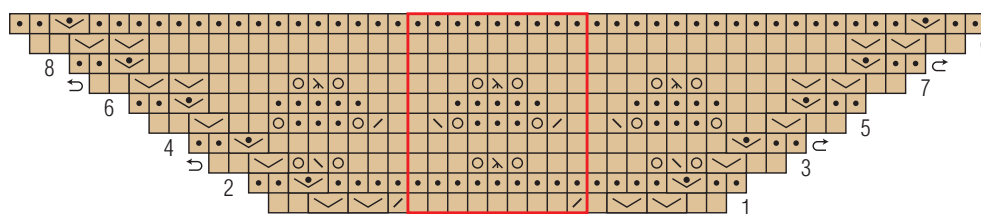
Edge Short-Row 4 (WS): K3.

Mosaic Chart C

Join CC1.

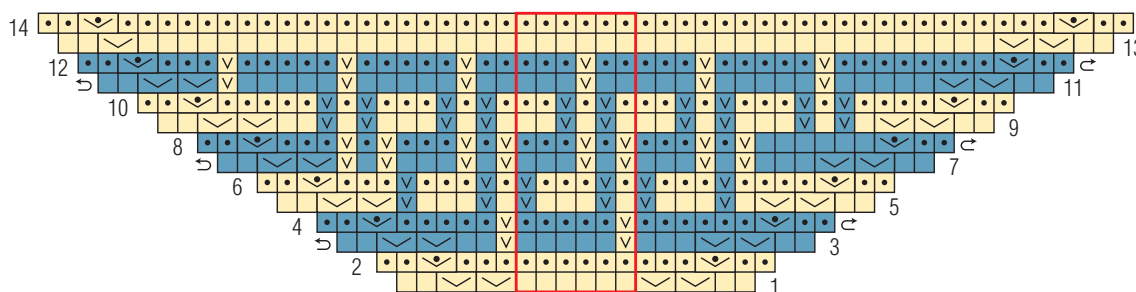
Cont working Edge Short-Rows where indicated by arrows, work Rows 1–14 of chart—331 sts. *Note:* There is only one k1f&b inc at the end of Row 13.

Lace Flowers Chart



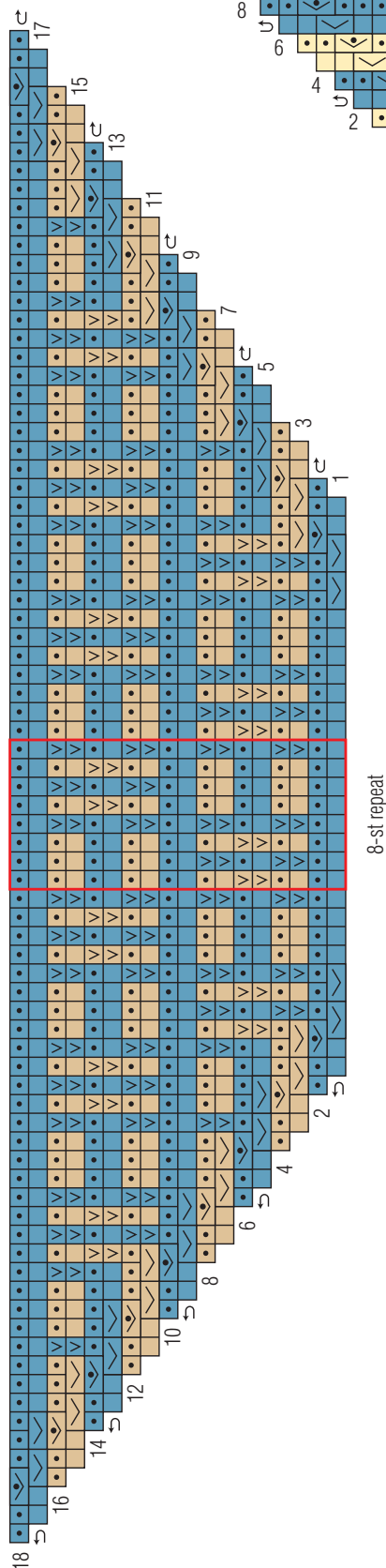
9-st repeat

Mosaic Chart C

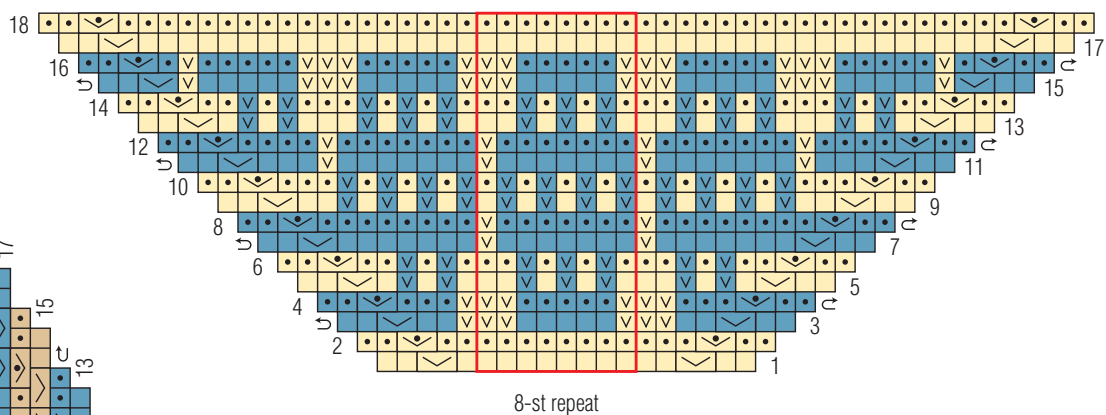


6-st repeat

Mosaic Chart D



Mosaic Chart E



Mosaic Chart D

Cut CC1 and join MC.

Cont working Edge Short-Rows where indicated by arrows, work Rows 1–18 of chart—385 sts.

Mosaic Chart E

Cut MC and join CC1.

Cont working Edge Short-Rows where indicated by arrows, work Rows 1–18 of chart. *Note:* There is only one k1f&b inc worked at each end of every RS row—421 sts.

Cut CC1.

Change to smaller needle and cont to end with CC2.

Row 1 (RS): K2, k1f&b, k to last 3 sts, k1f&b, k2—2 sts inc'd.

Edge Short-Row 1 (WS): Turn work, k3, W&T.

Edge Short-Row 2 (RS): K3.

Row 2 (WS): K2, k1f&b, k to last 3 sts, k1f&b, k2—2 sts inc'd.

Edge Short-Row 3 (RS): Turn work, k3, W&T.

Edge Short-Row 4 (WS): K3.

Rep Rows 1 and 2, including the 4 short-rows, 5 more times—445 sts.

Using size 6 (4 mm) spare needle, BO all sts purlwise.

FINISHING

Weave in all ends and block the shawl. ❖

MARI TOBITA was born in Japan and lives in New York City in an apartment filled with books and boxes of yarn. She has spent many years studying knitting and designing knitwear.