

Béton brut

Designed by Marija Korać



"Concrete, Mon Amour."

- Stefano Perego

A hat inspired by Brutalist architecture, which gives emphasis on raw materials, angular geometry, and rough surfaces.

The design features geometric shapes formed by cables, with garter stitch sections in between, reflecting the architectural style's angular and structured forms.

The pattern is suited for advanced beginners ready to explore cable knitting and includes both written and charted instructions.

Sizes & measurements

The pattern is given in 3 sizes: **1 (2, 3)**

To fit the head circumference: 48-51 (53-57, 58-61) cm / 19-20 (20.75-22.5, 22.75-24) inch

The hat is intended to be worn with -5-10 cm (2-4") of negative ease.

The model in the photo is wearing a size 2, on 56 cm (21.5") head circumference.

Materials

DK weight yarn 50 g (1.76 oz) = 105 m (115 yd), 100% Wool, 5%

Yardage: 103 (116, 128) m / 113 (127, 140) yd

Needles: 4 mm (US 6) or size needed to meet the gauge.

Cable needle, stitch marker, scissors, a tapestry needle, and a row counter are recommended.

For the model in the photo Drops, Merino Extra Fine was used in light gray color (no. 05).

Gauge

18 sts × 25 rows in 10 × 10cm (4 × 4")

Worked over stockinette stitch, blocked.

Pattern notes:

- ★ The hat is worked in the round.
- ★ The stitch pattern between two asterisks (*) should be repeated.
- ★ The yarn used in this sample is very elastic. If you choose a yarn with less (or more) stretch, you may need to adjust the number of cast-on stitches to achieve the desired fit. Instructions for making this adjustment are included within the pattern.
- ★ Video tutorials on used techniques are available at my YouTube channel, <https://www.youtube.com/@macakorac>

Abbreviations

st(s) – stitch(es)

k – knit

p – purl

m1Lp – make one left purlwise – lift the horizontal bar between two stitches and then purl it through the back loop (1 st increased)

sl1-k1-ssso – slip 1 stitches purlwise, k next st, pass slipped st over the last worked st (1 st decrease)

1/1 LPC – slip 1 st to cable needle and hold in front, p1, then k1 from cable needle

1/1 RPC – slip 1 st to cable needle and hold in back, k1, then p1 from cable needle

sl1wyib – slip 1 st with yarn in back of the work

RS – right side of the work

WS – wrong side of the work

Instructions:

Cast on 60 (70, 80) sts using [Chain-Edge Cast-On](#) or any other preferred casting method. Join to knit in the round being careful not to twist the sts. Place marker for the beginning of the round.

If you'd like to make the hat in a different size, or are using a yarn with different elasticity, cast on more or fewer stitches in multiples of 10.

Ribbing round: * k1, p3, k1*, repeat until the end of the round

Repeat ribbing row 10 times in total for all sizes.

If you want a wider or narrower ribbing, repeat the ribbing row until you reach the desired height.

Set up round: * k1, m1Lp, p3, k1*, repeat until the end of the round

After set-up round you will have **72 (84, 96) sts** on your needles.

Main pattern (Chart instructions are given on page 5)

Round 1: *k1, p4, k1*, repeat until the end of the round

Round 2 and all even rounds: k all

Round 3: *1/1 LPC, p2, 1/1 RPC*, repeat until the end of the round

Round 5: *p1, 1/1 LPC, 1/1 RPC, p1*, repeat until the end of the round

Round 7: *p2, k2, p2*, repeat until the end of the round

Round 9: *p2, k2, p2*, repeat until the end of the round

Round 11: *p1, 1/1 RPC, 1/1 LPC, p1*, repeat until the end of the round

Round 13: *1/1 RPC, p2, 1/1 LPC*, repeat until the end of the round

Round 15: *k1, p4, k1*, repeat until the end of the round

Round 16: k all

Repeat rounds 1-16 twice in total, and then repeat rounds 1-6 one more time.

If you're working with a different yarn, repeat Rows 1-16 until you reach the desired length, ending on Row 6. The crown decreases quite abruptly, so adjust the length accordingly.

Decrease set up rounds (Chart instructions are given on page 5)

Row 1: * p2, 1/1 LPC, p2*, repeat until the end of the round

Row 2: k all

Row 3: * p3, sl1wyib, p2*, repeat until the end of the round

Row 4: remove marker for the beginning of the round, k3, place marker for the new beginning of the round, k all to the end of the round

Decrease (Chart instructions are given on page 5)

Row 1: *sl1-k1-pssso, p4*, repeat until the end of the round [60 (70, 80) sts]

Row 2: k all

Row 3: *sl1wyib, p4*, repeat until the end of the round

Row 4: *sl1-k1-pssso, k3*, repeat until the end of the round [48 (56, 64) sts]

Row 5: *sl1wyib, p3*, repeat until the end of the round

Row 6: k all

Row 7: *sl1-k1-pssso, p2*, repeat until the end of the round [36 (42, 48) sts]

Row 8: k all

Row 9: *sl1-k1-pssso, p1*, repeat until the end of the round [24 (28, 32) sts]

Row 10: *sl1-k1-pssso*, repeat until the end of the round [12 (14, 16) sts]

Row 11: *sl1-k1-pssso*, repeat until the end of the round [6 (7, 8) sts]

Finishing

Cut your working yarn leaving a long tail, about 15 cm. Use a tapestry needle to pull your yarn through the stitches in the order that you would knit them. Weave in ends and block your hat.

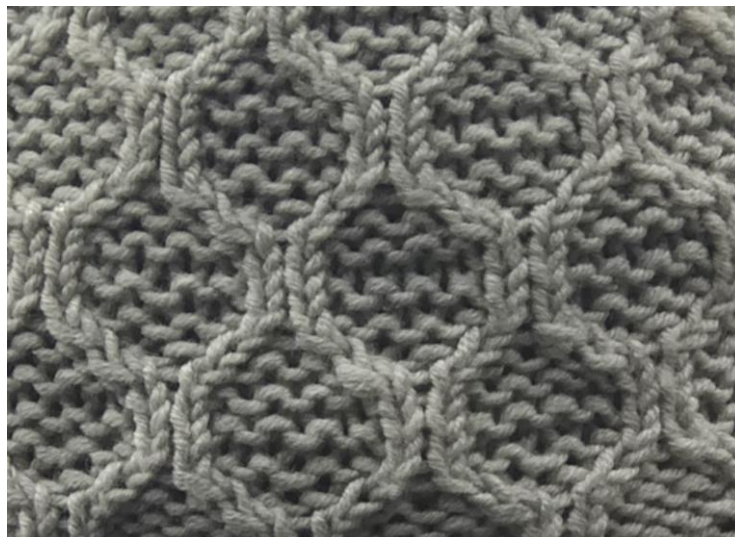


Chart instructions

For the number of pattern repeats consult written instructions.

Symbols

Knit

1/1 LPC - slip 1 st to cable needle and hold in front, p1, then k1 from cable needle

Purl

1/1 RPC - slip 1 st to cable needle and hold in back, k1, then p1 from cable needle

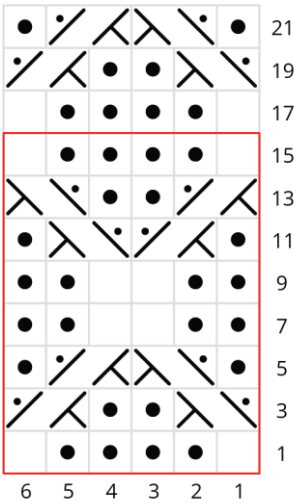
Slip 1 stitches purlwise, k next st, pass slipped st over the last worked st (1 st decrease)

Slip 1 st with yarn in the back of the work

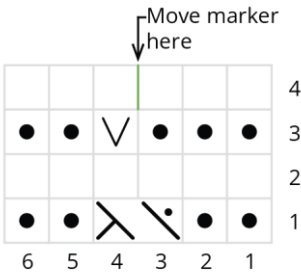
No stitch

Repeat

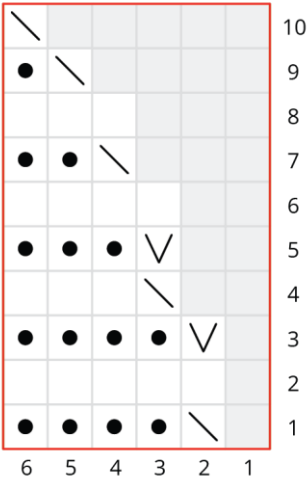
Main pattern (WS rows: k all)



Decrease set up



Decrease (For Row 11 consult the written instructions)



If you like this pattern, you may also like:



[Biselado](#)



[Trenzas cow!](#)



Thank you for downloading and knitting my pattern!

©2025, Marija Korać. All rights reserved.

With purchasing this pattern, you agree to print and use this pattern only for your personal use. You may not distribute or sell electronic or paper copies of the pattern itself or any parts in it. The finished items may be sold or distributed. However, I ask for it to be recognized as a Marija Korać design.

Please contact me if you have any questions or comments at macakorac@gmail.com. Thank you.

A big thank you to [Tea Berček](#) for tech edit assistance.

If you share photos of your hat on IG, make sure to tag me [@macakorac](#) and use hashtags #marijakoracdesign and #betonbruthat, so I can see your beautiful creations!

You can find more of my designs at:

RAVELRY: [Marija Korac](#)

WEBSITE: www.marijakorac.com/designs-services/

ETSY: [Maca K handmade](#)

LOVE CRAFTS: [Marija Korac](#)