



Berchta
mittens with snowflakes

Yarn

125 m / 137 yards in main colour
6 m / 6.5 yards in contrast colour 1
80 m / 88 yards in contrast colour 2

The sample mittens used Rauma Finullgarn with colourway 401 as main colour, 456 as contrast colour 1, and 4041 as contrast colour 2.

Needles

set of 2.5 mm double-pointed needles
set of 3 mm / US 3 double-pointed needles

Notions

stitch holder

Gauge

16 sts = 2" / 5 cm over palm pattern, unblocked

Blocked Measurements

circumference 7.5" / 19 cm
length 9.5" / 24 cm

4.5" / 11.5 cm from cuff to base of thumb
5" / 12.5 cm from base of thumb to tip

Abbreviations

CC *contrast colour*
k *knit*
k2tog *knit 2 stitches together*
MC *main colour*
p *purl*
rem *remaining*
sl *slip*
ssk *slip, slip, knit*
st(s) *stitch(es)*
tbl *through the back loop*

Mitten Body

- ➡ The mittens are knitted in the round.
- ➡ Fig. 1 on page 5 shows the backward loop cast-on.

With CC1 and 2.5 mm / US 1.5 needles, cast on 62 sts using a long-tail cast-on.

Join in a round and work Rnds 1-7 of Chart 1.

Change to 3 mm / US 2.5 needles, join CC2 and work Rnds 9-39. On Rnd 40, mark thumb as follows:

Right mitten:

K 2 sts, place next 11 sts on stitch holder, cast on 11 sts in pattern using the backwards loop cast-on, continue to end of rnd.

Left mitten:

K 18 sts, place next 11 sts on stitch holder, cast on 11 sts in pattern using the backwards loop cast-on, continue to end of rnd.

Then work the rest of Chart 1 = 8 sts after Rnd 80. Draw up rem sts.

Thumb

Place the 11 thumb sts on a size 3 mm / US 2.5 needle.

With MC and 3 mm / US 2.5 needles, pick up 15 sts along the top of the thumb hole: 2 sts in each gap and 11 sts across the cast-on sts = 26 sts total.

Join in a round and work Rnds 1-13 of Chart 2. Change to 2.5 mm / US 1.5 needles and work Rnds 15-19 = 10 sts. Draw up rem sts.

Finishing

Weave in ends. Block.



If you would like to support me or show your appreciation for my work, please consider [buying me a virtual coffee](#). Thank you for your support!

I tweet on a semi-regular basis as [@formerlymyself](#).

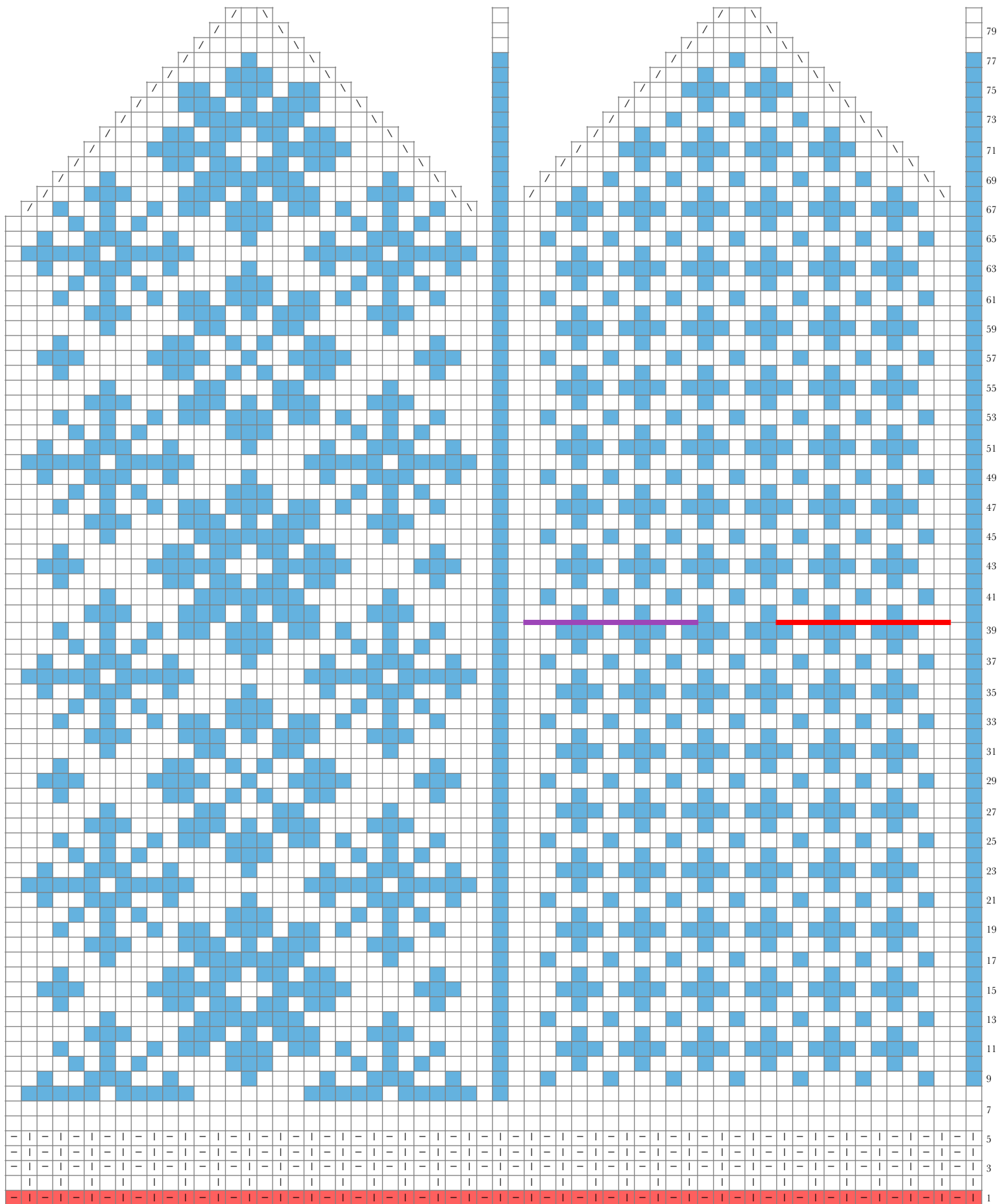


Chart 1

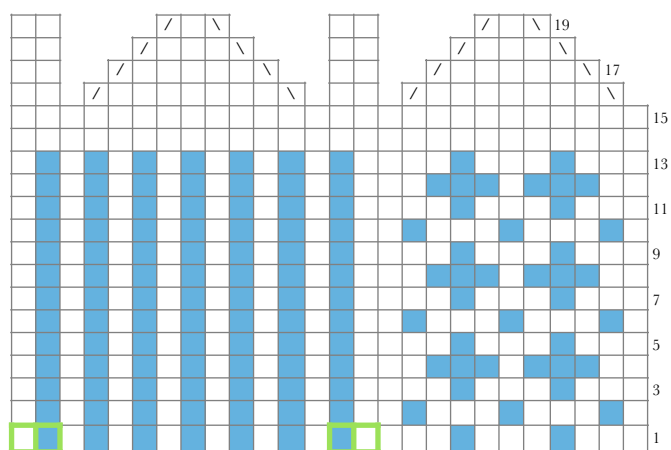


Chart 2

- MC, k
- CC1, k
- CC2, k
- ⋮ ktbl
- ⋮ p
- right thumb sts
- left thumb sts
- ⋮ ssk
- ⋮ k2tog
- st picked up in the gap on previous rnd



Fig. 1 - Backwards loop cast-on